

# CITY OF ATLANTA



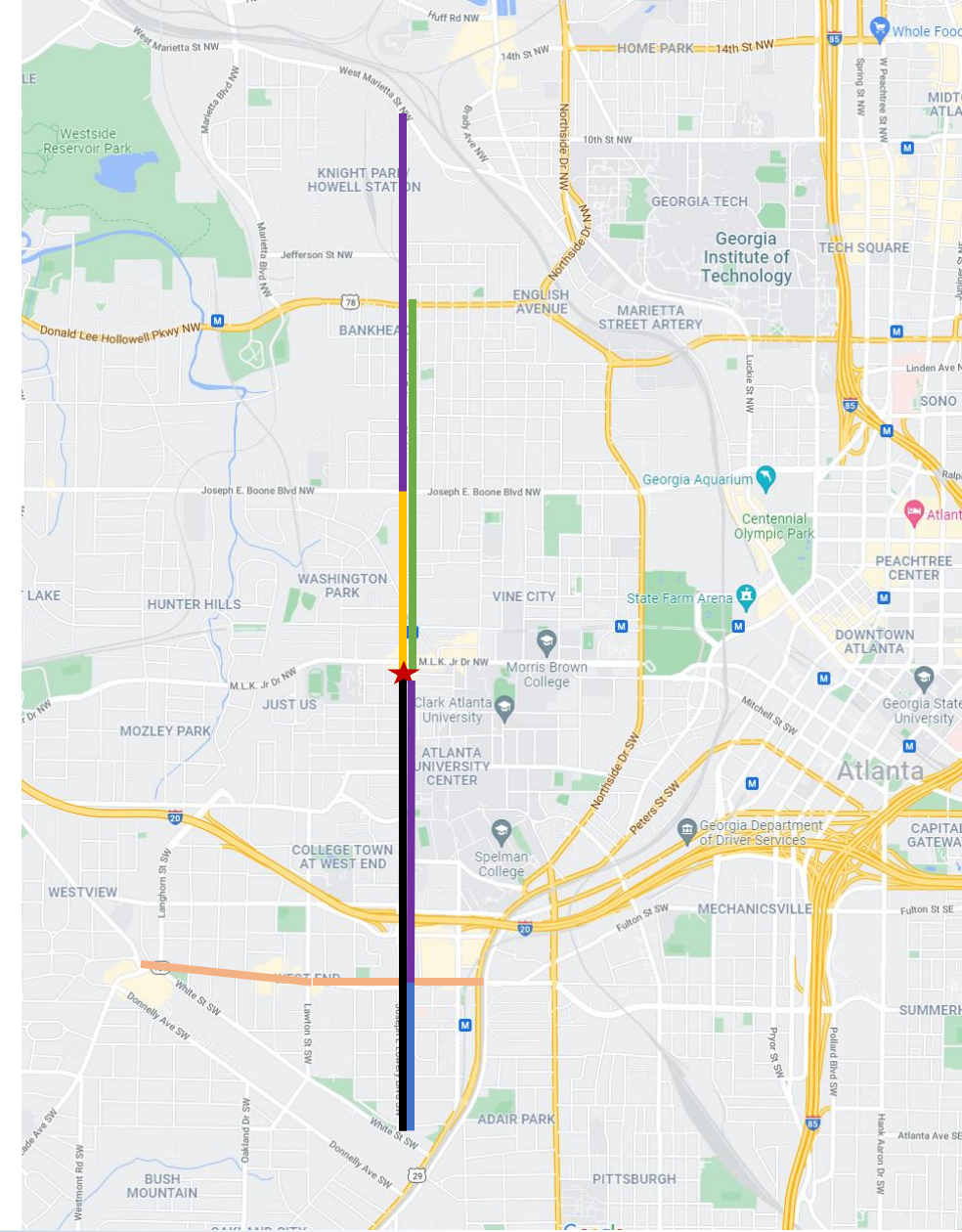
## DEPARTMENT OF TRANSPORTATION

Mayor Keisha Lance Bottoms

Department of Transportation Commissioner, Josh Rowan, PE

# LMIG 2019 – Joseph E Lowery Projects Overview

- ▶ **LMIG 2019 Resurfacing Limits:** White St to Washington Pl
- ▶ **LMIG 2019 Bike Lane Limits:** White St to Ralph David Abernathy
- ▶ **ATLDOT #1009 JEL** <https://atldot.atlantaga.gov/projects/j-e-lowery-boulevard-complete-street>
  - ▶ **Complete Street:** Washington Pl to Joseph E Boone Blvd
  - ▶ **Signal Upgrades:** Washington Pl to SR 8 / DL Hollowell
- ▶ **GDOT PI #0018324** – SR 139 / RDA Safety Improvements - design
- ▶ **GDOT PI #0017743** – Off System Safety – RRFB - design
- ▶ **GDOT PI #0013209** – SR 139 / RDA Signal Upgrades – construction
- ▶ **ATLDOT #TBD** – Complete Streets – early planning

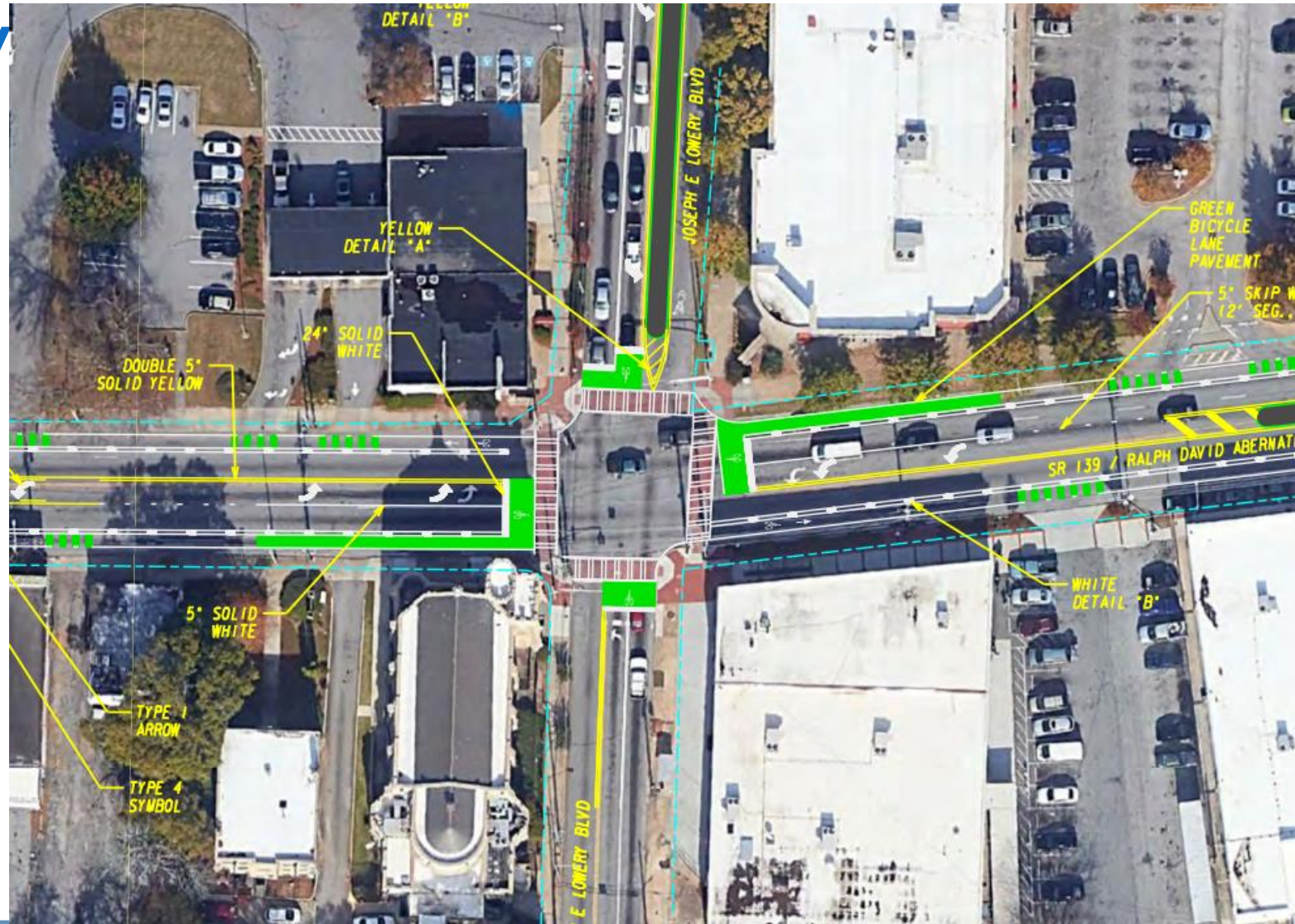




# LMIG 2019 – JE Lowery Overview

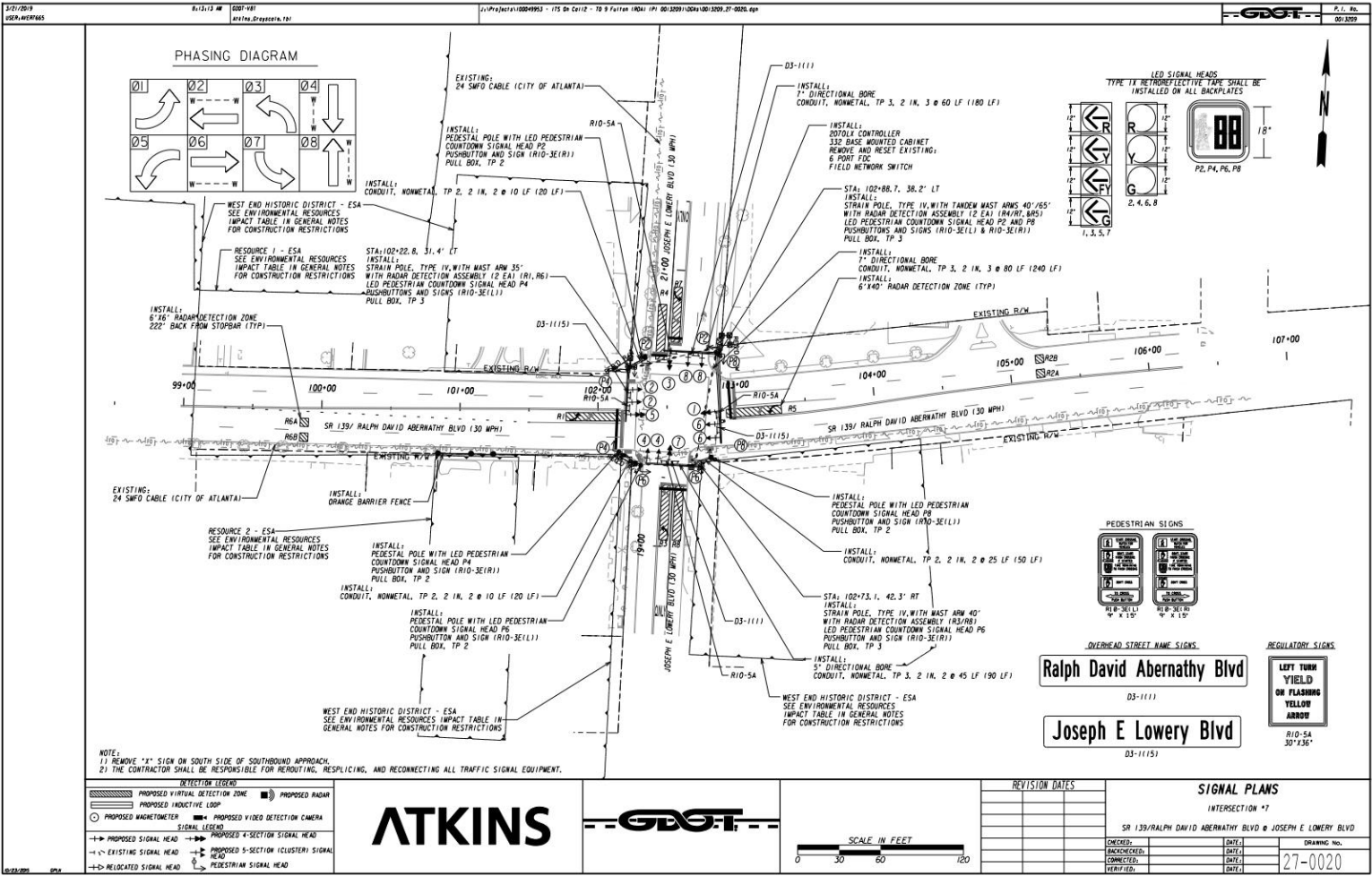
► **GDOT PI #0018324** – SR

139 / RDA Safety  
Improvement



# LMIG 2019 – JE Lowery Projects Overview

► **GDOT PI #0013209 – SR**  
**139 / RDA Signal**  
**Upgrades**





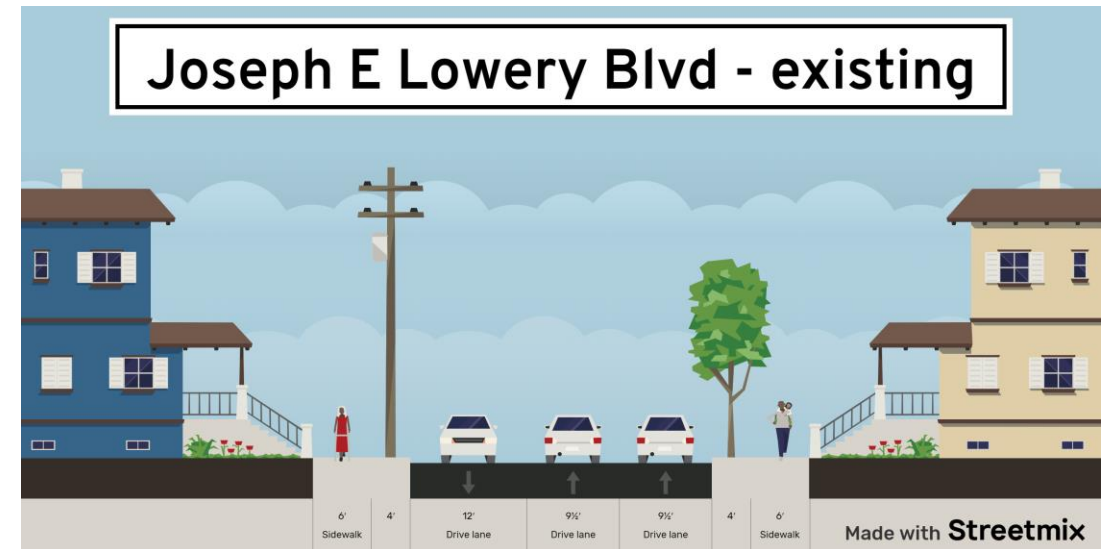
# LMIG 2019 – Joseph E Lowery Resurfacing Scope

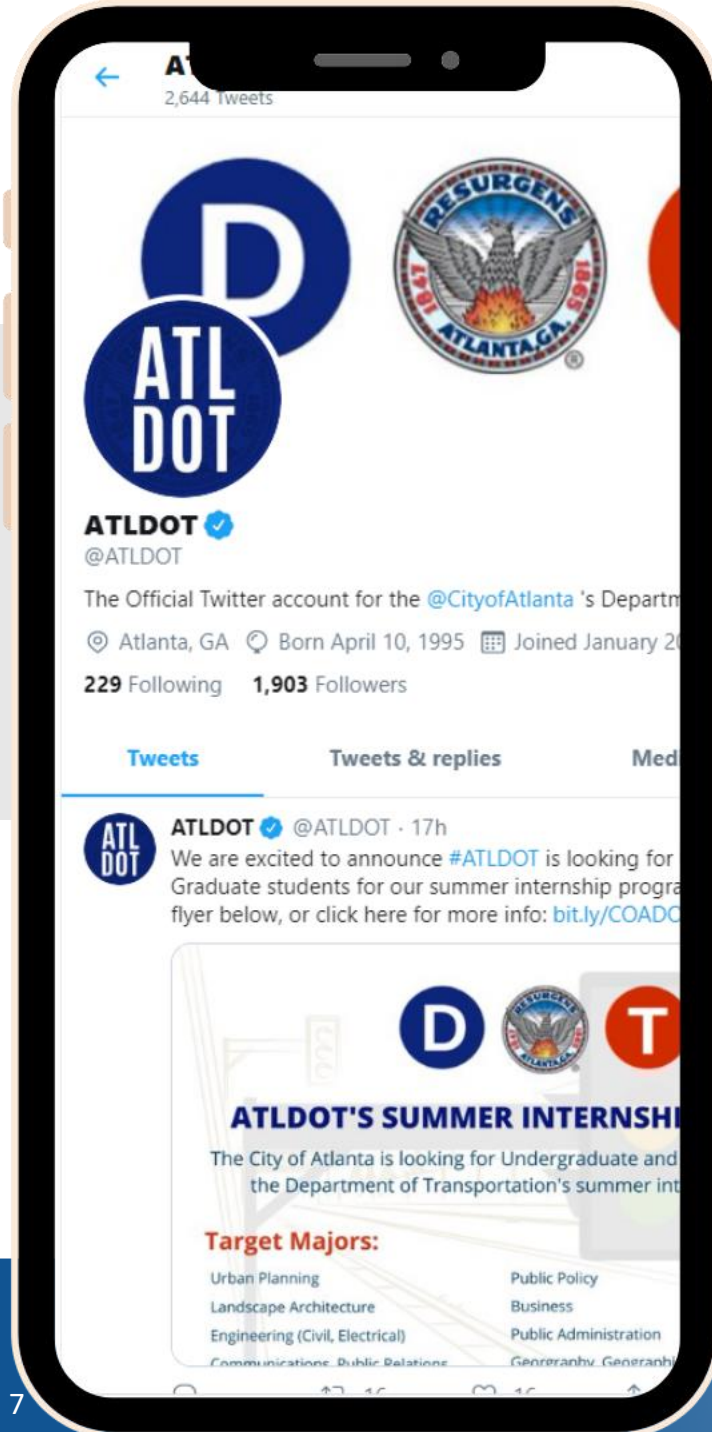
- ▶ Existing curb to curb distance is **31-32'** throughout traffic study area
- ▶ Existing northbound lanes are very narrow – **9-9.5'**
- ▶ **Cross section reverses** to two narrow southbound lanes and one northbound lane between Rose Cir and White St



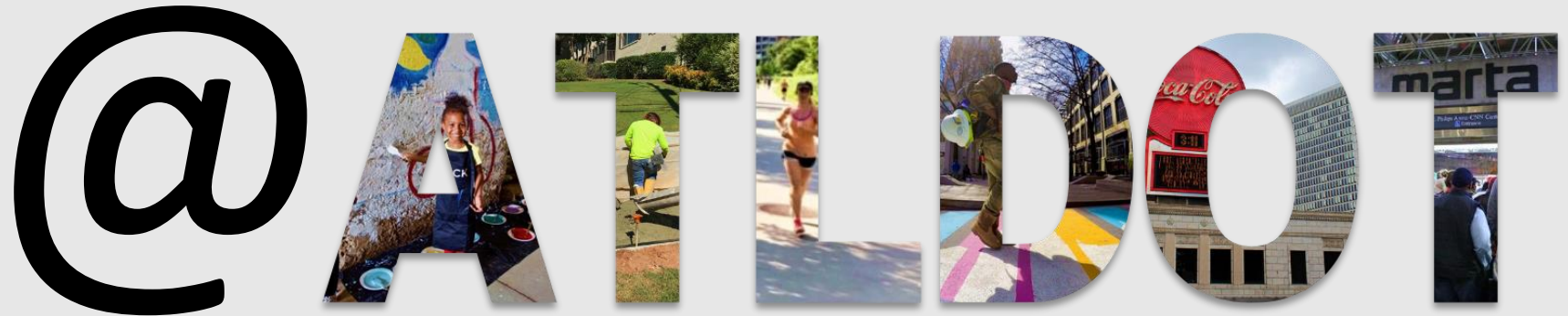
# LMIG 2019 – Joseph E Lowery Resurfacing Scope

- ▶ **Proposal:** Stripe 1 northbound and 1 southbound vehicle lanes at **10.5 – 11'** wide from White to RDA
- ▶ **Proposal:** Stripe **5' bike lanes** given residential nature, low traffic volume, connectivity from Lee+White development / Westside BeltLine to RDA (future bike lanes from GDOT road diet).





# Follow us on social media!



.com/ATLDOT



@ATLDOT



ATL.DOT

nextdoor

ATLDOT@AtlantaGA.gov

