

# **VISION: Sydney's Koala Belt and Corridors**

**NSW largest (maybe only)  
recovering Koala colony**

**Connects Koala colonies  
north, south, west - allows  
recolonisation**

**Potential for a world great  
walks circumnavigating  
Sydney**

**River recreation, active links  
and tourist business  
opportunities**

**Australia's earliest Frontier  
Heritage**

## **NSW Koala Strategy (p21) - South West Sydney:**

*The NSW Government has committed **\$114 million in the first 5 years of the draft Cumberland Plain Conservation Plan** for early implementation actions. Some of these actions have a strong focus on koalas, including:*

- *Establishing new reserves and biodiversity stewardship sites to protect important koala habitat, including the **1830 hectares Georges River Koala Reserve***
- *Restoring up to 80 hectares of koala habitat within the Georges River Koala Reserve*
- *Installing koala exclusion fencing and constructing **two fauna crossings** to allow movement across Appin Road.*



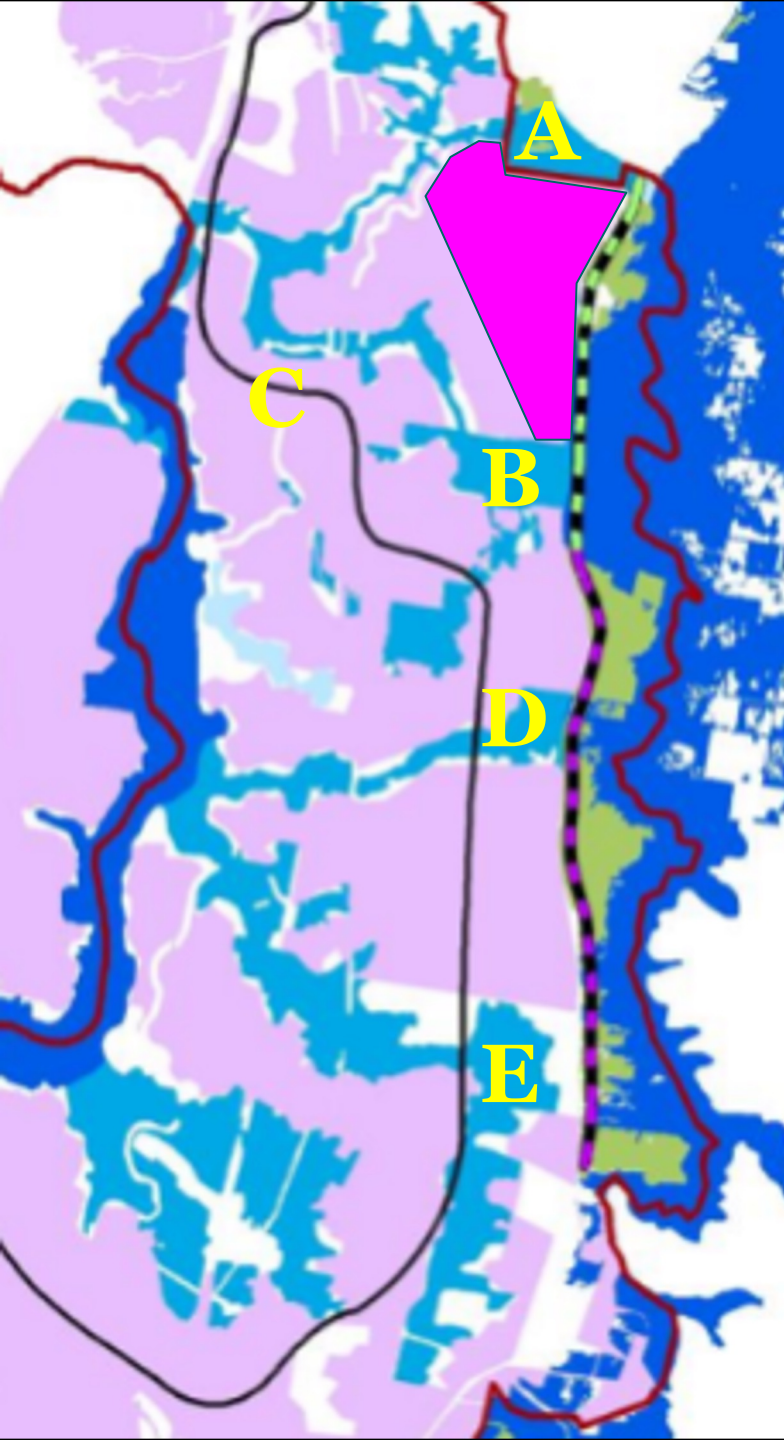
### **NSW Koala Strategy**

Towards doubling the number of koalas  
in New South Wales by 2050

**INITIAL CAMPAIGN SUCCESS BUT CHALLENGES  
REMAIN**

**TEC WILL CONTINUE AIMING FOR MORE RESERVES  
AND CORRIDORS TO LINK HABITATS AND ALLOW  
KOALA POPULATION EXPANSION**





Chief Scientist  
& Engineer

Advice on the protection of the Campbelltown Koala  
population

Koala Independent Expert Panel

30 April 2020



**What the science says:**  
**Chief Scientist identified 5 corridors**  
**along Appin Road, 4 that cross it.**  
**(A,B,C,D,E)**

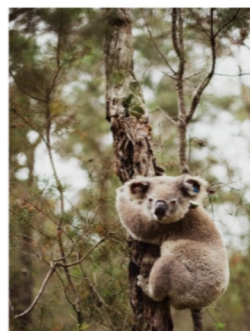
**Campbelltown Koala Plan identified 2**  
**corridors ( A & B ) that cross Appin**  
**Road.**

**Widths of 390m-425m**



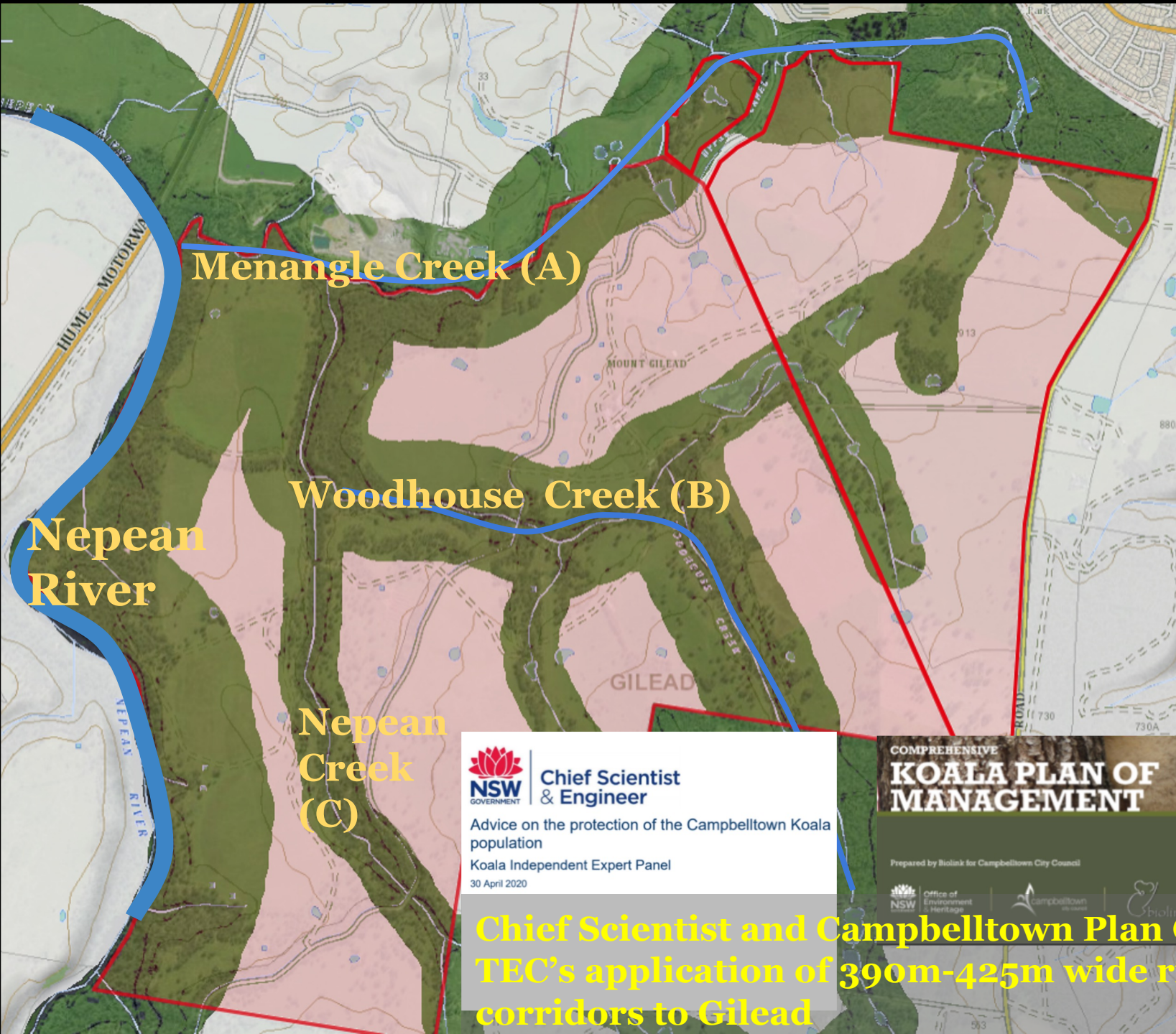
DEPARTMENT OF PLANNING, INDUSTRY & ENVIRONMENT

**Conserving Koalas**  
**in the Wollondilly**  
**and Campbelltown**  
**Local Government**  
**Areas**



**Dept Planning weakened**  
**protections:**  
**‘no need for east - west**  
**corridors’ – ‘exclusion**  
**fencing down Appin Road**  
**(east)’ to maximise**  
**developable area to west**  
**breached width**  
**requirement**  
**used to Biocertify Stage 1,**  
**Lendlease Gilead plan**  
**Stage 2?**





**Menangle Creek (A)**

**Woodhouse Creek (B)**

**Nepean  
River**

**Nepean  
Creek  
(C)**



**Chief Scientist  
& Engineer**

Advice on the protection of the Campbelltown Koala  
population

Koala Independent Expert Panel

30 April 2020

COMPREHENSIVE  
**KOALA PLAN OF  
MANAGEMENT**

Prepared by Biolink for Campbelltown City Council



**Chief Scientist and Campbelltown Plan Corridors:  
TEC's application of 390m-425m wide riparian  
corridors to Gilead**



Light green is the corridors and widths required for Koalas by Chief Scientist and Campbelltown Plan



Lendlease's Gilead  
(Figtree Hill)

Stage 1

Stage 2

(B)

(C)

Nepean  
River

Dark Green is approx the  
corridor fragments Lendlease  
will leave for Koala Habitat