



How the Cumberland Plain Conservation Plan can deliver for endangered Koalas, biodiversity and urban liveability

The Cumberland Plain Conservation Plan (CPCP) covers 200,000ha framing the entire western edge of Sydney. It could curb Sydney's urban sprawl; protect endangered ecosystems; and help tackle killer urban heat for existing and new residents – while supplying new housing.

[YouGov polling](#) found 84% of NSW residents want Koala habitat protected from development, with 91% supporting a Koala Greenbelt around Sydney. The Greenbelt and connected grid of bushland corridors and waterways, including regeneration areas - will be a treasured conservation and liveability legacy in a global warming environment.

However, the CPCP issued by the previous NSW government (yet to receive Commonwealth consent) fails to deliver a balanced future. It is now being reviewed by the Minns Government. We are calling for the following reforms.

1. Secure protection of the environment

The key to deliver sustainable outcomes for western-Sydney is to enlarge the amount of **protected conservation lands** (C2 zoning*). Research undertaken for the CPCP found many unique plant and animal species.

Koala corridors are also essential and all identified in the Chief Scientist's Campbelltown Koala Advice (425m wide) should be protected and a similar method for identifying and protecting corridors in other CPCP areas (and Gilead 2) should be applied. Koala road crossings should be best practice, i.e. overbridges and box culverts (current plans for Appin Road underpasses are inadequate and will block movement).

** The current SEPP and Ministerial Direction underlying the CPCP, are too easy to change. The draft CPCP proposed C2, but it did not proceed.*

2. Review development proposals

Major plans must be adjusted to create climate friendly precincts that protect households from killer heat; are net carbon zero; retain established trees; and have a grid of cooling green spaces – as well as adequate social and transport infrastructure.

We have identified at least six developments that in part will eliminate endangered bushland communities and fragment or block key Koala corridors. ***The CPCP should direct and manage where development occurs to protect the environment – not the other way around.***

3. Deliver conservation reserves quicker

The CPCP proposes 15-20 year timeframes for the creation of new conservation reserves (Georges River Koala Reserve, Gulguer Reserve Investigation Area, the Confluence Reserve Investigation Area). This is just an invitation to allow further damaging development and urban sprawl in the meantime. ***Reserves first – development later.***



4. No translocation or exclusion of Koalas

Koala habitat is under threat but at the same time, in a generational event, the population is expanding naturally. **It is perverse** that the CPCP excludes koalas from existing koala corridors and moves them elsewhere. The NSW [Koala Country](#) program states translocation should not be used to mitigate risks associated with development or land clearing.

5. Oversight of implementation and ongoing ecological audit

The Minister for Environment should have **robust and effective oversight** and monitoring of the implementation of the CPCP. This could be facilitated by regular review of actions, assisted by advice from an independent group comprised of experts and NGOs advising the Minister.

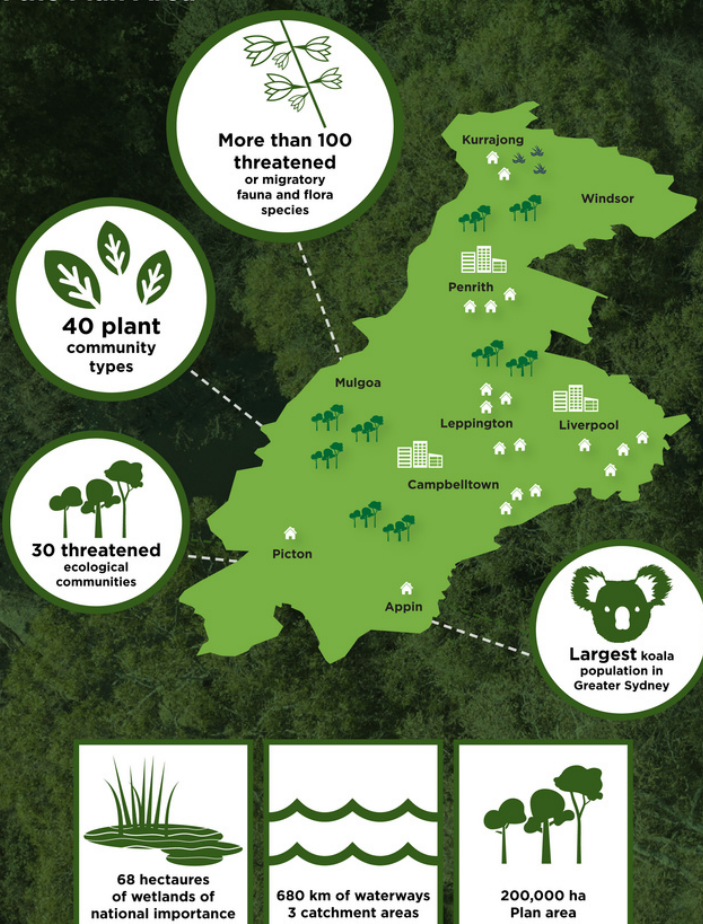
There must be a mechanism to urgently overlay tighter environmental regulations, if the CPCP is failing, with an emergency stop trigger in the light of an unprecedented event such as bushfires or floods.

WE URGE YOUR SUPPORT FOR BALANCED AND SUSTAINABLE DEVELOPMENT ACROSS THE CUMBERLAND PLAIN

www.tec.org.au/save_sydney_koalas_campaign

Further information: info@tec.org.au

Conservation values in the Plan Area



Map Source: DPIE | Highlights of the Draft Cumberland Plain Conservation Plan

[Total Environment Centre](#)
[Sydney Basin Koala Network](#)
[WIRES](#)
[Environmental Defenders Office](#)
[Nature Conservation Council of NSW](#)
[Humane Society International Australia](#)
[International Fund for Animal Welfare](#)
[Australian Wildlife Society](#)
[Australian Climate and Forest Alliance](#)
[Greater Sydney Landcare](#)
[Habitat Network](#)
[Australian Conservation Foundation Greater Western Sydney](#)
[National Parks Association Macarthur Branch](#)
[Save Sydney's Koalas](#)
[WinZero \(Wingecarribee Net Zero Emissions\)](#)
[Save Mt Gilead](#)
[Wilton Action Group](#)
[Rewilding Sydney Koalas Project](#)
[Hawkesbury Environment Network](#)
[Sutherland Shire Environment Centre](#)
[Hills-Hornsby Rural Koala Project](#)
[DoSomething Foundation](#)
[Lane Cove Bushland and Conservation Society](#)
[Hunter Community Environment Centre](#)
[Oatley Flora and Fauna Conservation Society](#)