

An aerial photograph of a bridge with a metal railing, viewed from a high angle. The bridge spans across a valley with dense trees. The entire image is overlaid with a semi-transparent blue filter. A large, light blue diagonal shape is positioned in the upper left corner, partially overlapping the bridge and the sky.

City of Pittsburgh
Comprehensive Bridge Asset Management Program

Report to the Mayor
Honorable Ed Gainey

December 2022

City of Pittsburgh Comprehensive Bridge Asset Management Program
Report to the Mayor Honorable Ed Gainey December 2022

Table of Contents

- 1. Executive Summary 1
- 2. Methodology 7
- 3. Conclusions 7

- Appendix A: Master List of City Bridges

- Appendix B: Inspection Report Review Summary

- Appendix C: Drone Flight Schedule

- Appendix D: Sample Drone Photos

- Appendix E: New Bridge Inspection Recommendations

- Appendix F: Priority Photo Examples

1. Executive Summary

The WSP team is pleased to submit the subject report on the City of Pittsburgh bridge conditions as part of Professional Services Agreement 54208 Work Order 1. The City of Pittsburgh owns and is responsible for maintaining 147 bridges, which includes 100 vehicular bridges and 47 pedestrian bridges. These bridges range in length from 9' to 1623'. Some of these bridges carry vehicles over rivers, streams, and valleys while others carry pedestrians in City parks and neighborhoods.

The WSP team consists of bridge engineers with experience in bridge engineering including bridge asset management, bridge inspection, load rating, maintenance, design and recommending bridge repair project scopes of work. The team is led by Lou Ruzzi, P.E., who has 41 years of structural engineering experience, including 35 years in PennDOT bridge design, inspection, and load rating. The last 21 of those years were spent as the PennDOT District 11-0 District Bridge Engineer managing approximately 1800 bridges, 500 sign structures, 1000 retaining walls and 80 Hi-Mast Light poles.

The bridge inspection report review team consisted of 5 engineering firms that have been doing bridge inspection in Pennsylvania for many years. Specifically, the team consists of 12 engineers, 10 of whom are Professional Engineers, with an average of 24 years' experience in bridge inspection and load rating. This task was performed by WSP USA, Inc., Mackin Engineering Company, A&A Consultants, Inc., Azalea Group, LLC, and SAI Consulting Engineers, Inc. See the attached master list of bridges (Appendix A) for which consultants performed each bridge review.

For this Work Order, the WSP team was to review the bridge inspection reports, plus additional photos for 147 bridges to:

1. Compare and confirm all bridges were inspected and that the conditions were consistent with the photos
2. Identify if any Priority items are out of compliance with PennDOT and FHWA policies, and identify new items to be repaired
3. Compare and confirm that the weight limit on the bridges reflected the load rating in the report and that the weight limit signs were properly placed to give overweight vehicles time to choose an alternate route
4. Perform a field review of 32 poor bridges for critical (Priority 0) or high priority (Priority 1) maintenance needs. Critical and high priority maintenance priorities are defined as maintenance needs that threaten either the structural integrity of the bridge (or other structures) or public safety. WSP also recommended for repair any Priority 2s that could change to Priority 1s within the next two years. Priority 2s are defined as any maintenance need that may eventually lead to threatening the structural integrity of the structure or public safety, if not corrected.
5. Using a drone, perform a field review of 16 bridges, including 5 of the Poor bridges noted in bullet #4, to observe if critical or high-priority maintenance needs exist
6. Recommend any new inspections or load ratings for the 147 bridges
7. Develop a list of any bridges and/or sidewalks to be closed and pedestrian bridges to be demolished.

Of the 147 City bridges, 145 of them had bridge inspection reports or recently taken generalized photos. There were 2 bridges that did not have either a recent bridge inspection or photos. The review of the structures with available information was based on PennDOT Publications 238 Bridge Safety Inspection Manual and 100A Bridge Management System 2, Coding Manual. Based on this

review, it is the professional opinion of the WSP team that among the 145 bridges, there are no vehicular bridges with a structural concern that would require a new closure. However, we are recommending closure of some sidewalks and pedestrian bridges (see Items 8 & 9 below). For the 2 bridges that did not have either a recent bridge inspection report or photos, a visual review was done by the City to confirm overall condition. However, these bridges were not reviewed by the WSP Team as part of this Report as they do not have recent inspection reports or photos available. These 2 bridges are:

- City Bridge #153 – S 27th Street
- City Bridge #154 – S 28th Street

Moreover, the WSP team is recommending that a total of 18 bridges (8 vehicular and 10 pedestrian) receive an additional inspection, including the above 2 bridges with no available information. Also, 3 of the 18 additional inspections are recommended to have ultrasonic testing performed on their pinned connections. Those 3 structures are:

- City Bridge #85 – Panther Hollow Road
- City Bridge #136 – Milroy Street
- City Bridge #145 – Hot Metal Street

The purpose of these 18 new inspections includes:

- accessing areas that did not previously receive a hands-on inspection
- gathering more in-depth and detailed measurements of remaining sections if the extent of section loss were not previously recorded
- determining the current condition of any structure that does not have a recent inspection
- inspecting previously missed portions of the structure which should have been included as part of the structure inspection

For photos illustrating typical critical and high priority hazards to pedestrians, areas of advanced deterioration, and deck joint deterioration, See Appendix F, Photos 1a through 3b. For photos illustrating typical pin conditions that warrant ultrasonic testing, See Appendix F, Photos 5a through 5c.

The WSP team is also recommending that 48 new structural analyses of the bridges be performed. See Item #3 below for the reasons.

Additionally, the WSP team has identified missing or obstructed bridge weight limit signs and vertical clearance signs that need to be addressed. For photos illustrating typical critical and high priority legal signage deficiencies, see Appendix F, Photos 4a through 4b.

The following is a summary of the structural reviews conducted for the 100 vehicular bridges and 47 pedestrian bridges:

- 1) Originally Identified Maintenance Priorities: On September 26th and 27th, the WSP team notified the City of 13 Maintenance Priority 0s and 41 Maintenance Priority 1s that were identified as part of the Inspection Report reviews. These were a combination of outstanding Maintenance Priorities that had been previously identified in the Inspection Reports and had not yet been resolved, and new Maintenance Priorities that had not been identified in the Inspection Reports yet should be 0s or 1s in the opinion of the reviewer. Additionally, the Priority 1 at Swinburne Bridge was changed from a 1 to a 0 on October 21st, 2022, for a final count of 14 Maintenance

Priority 0s and 40 Maintenance Priority 1s. The City has since resolved all 14 of the identified 0s and 5 of the identified 1s.

a. Maintenance Priorities are defined as follows:

Coding:

		Short Definition	Action Timeframe
0	CRITICAL	Immediate response required	(within 7 days)
1	HIGH PRIORITY	As soon as work can be scheduled	(within 6 months)
2	PRIORITY	Review work plan and re-prioritize schedule.	(routine inspection interval)
3	SCHEDULE	Add to scheduled work.	(Add to schedule)
4	PROGRAM	Add to programmed work	(when funds are available)
5	ROUTINE	As per existing maintenance schedule.	(within the next work cycle)

- 2) Newly Identified Maintenance Priorities: Following the items identified in late September, the WSP Team notified the City of 13 additional Maintenance Priority 0s and 29 additional Priority 1s. These additional Maintenance Priorities were identified through further review of the inspection reports and photos and through field views of Poor bridges. The City has since resolved 5 of the newly identified 0s and 1 of the newly identified 1s. Considering both the originally identified and newly identified Maintenance Priorities, and following the City's resolution of many of these items, there are now currently a total of 8 outstanding Priority 0s and 63 outstanding Priority 1s. In addition, the WSP team has identified a total of 54 select Maintenance Priority 2s that could go to 1s in the next two years.
- 3) New Analysis Recommendations: There are 48 new analyses needed due to either additional deterioration/section loss since the last analysis was performed, because the current analysis is over 10 years old, or an analysis was never performed on the bridge.
- 4) New Bridge Inspection Recommendations: There are 18 new inspections needed, including 3 structures that will need pin inspections. See Appendix E (New Bridge Inspection Recommendations).
- 5) Missing Weight Limit Signs: There are 5 structures with outstanding missing or insufficient weight limit signs based on the review of the inspection reports, photos, or Poor bridge field views.
 - a. City Bridge #7, Bajo St (off Becks Run Road) over Tributary to Beck's Run – distance ahead placards need to be added to both near advance signs and existing advance load posting signage should be moved to within 25' of intersection with Becks Run Road
 - b. City Bridge #5, Charles Anderson Bridge (Boulevard of the Allies) – multiple missing or insufficient weight limit signs, including:
 - i. The near advance load posting at the intersection with Bartlett is > 25' from the intersection
 - ii. The near site sign is located over 180' from the bridge
 - iii. The near advance sign located on the ramp from Panther Hollow is completely obstructed by a tree branch
 - iv. The far advance sign is shown in the report to be needed at the intersection with Bates Street. The sign is located at the next intersection with Juliet Street.
 - v. There should be far advance signs at the Boulevard of the Allies intersections with Dawson Street and/or Parkview Ave
 - c. City Bridge #47, Larimer Avenue – multiple missing or insufficient weight limit signs, including:
 - i. Distance ahead placard needs to be added to far advance sign
 - ii. There needs to be a far site sign installed

- iii. Near site sign should be moved within 25' of the bridge
 - d. City Bridge #14, Calera Street #1 – needs an advance load posting sign at the intersection with Corley
 - e. City Bridge #115, 28th Street - Clean or replace the far site load posting sign. The signs are covered with so much graffiti and so many stickers that it the load posting is not clear
- 6) Vertical Clearance Signs: The WSP Team did not identify any outstanding vertical clearance sign deficiencies based on the review of the inspection reports, photos, or Poor bridge field views.
- 7) Field View of 32 Poor Bridges: WSP also completed a field view of 32 Poor bridges, as part of this effort. These structural condition evaluations were limited to locations that could be safely accessed without any specialized equipment and without causing impacts to traffic. A Poor Bridge is generally defined as any bridge with a National Bridge Inventory condition rating of 4 for the deck, superstructure, substructure, or culvert. When a bridge reaches a 4 rating, it means there is advanced deterioration or section loss, but the primary structural components still are sound. As a result of this review, there were 8 new 0s and 18 new 1s identified (included in the totals presented in Item 2, above), and it was also confirmed that some existing Priorities were addressed or in the process of being addressed.
- 8) Bridges or Sidewalks to be Closed:
 - a. City Bridge #51, Maple Ave – far right sidewalk ramp to be closed to pedestrians
 - b. City Bridge #37, Fritz Street Pedestrian Bridge – Add a concrete barrier to restrict vehicles from using the bridge. Will be left open to pedestrians.
 - c. City Bridge #109, Swinburne Bridge – right sidewalk to be closed to pedestrians due to structural concerns of sidewalk supporting members
 - d. City Bridge #113, Timberland Ave. – Bridge was closed in 2015. However, an additional Bridge Closed sign is needed at both approaches and at both advance intersections. Add fencing to restrict pedestrians from using the bridge, or demolish the bridge.
 - e. City Bridge #63, Fine Way – Bridge Closed signs are needed on both ends. Also add fencing to restrict pedestrians from using the bridge, or demolish the bridge.
 - f. City Bridge #6, Ansonia Place – Bridge was closed in 2012. However, an additional barrier is recommended to prevent utility trucks from crossing the bridge.
 - g. City Bridge #27, Baldwick Road #1 – recommend closure of sidewalk due to deficiencies to the pipe handrail and the sidewalk itself.
- 9) Pedestrian Bridges to be Demolished:
 - a. Broome Street Pedestrian Bridge – City is in the process of closing the bridge (10/19/2022).
 - b. City Bridge #49, Lowe Street Pedestrian Bridge – based on discussions with the City, this bridge does not appear to be getting any use and is a potential candidate for demolition.
 - c. City Bridge #119, Wilksboro Ave Pedestrian Bridge – has been closed for a number of years and the inspection report notes 'that this structure is beyond any economical approach to repair it and put it back into service.'
 - d. The Finland Street Pedestrian Bridge was hit by a vehicle on Friday, October 7th and was demolished on Saturday, October 8th.
- 10) Pedestrian Bridges to be Repaired:
 - a. Fritz Street Pedestrian Bridge at Brosville Street – Measures to be taken to ensure pedestrian traffic only, including placing additional barrier in front of the bridge. Potentially to be considered for replacement.
- 11) The 147 City bridges are broken down as follows:
 - a. 92 Vehicular NBIS Bridges

- b. 8 Vehicular Non-NBIS Bridges
- c. 47 Pedestrian Bridges

2. Methodology

- The WSP Team received the most current inspection report developed by others or recent photos from the City. The reviews of the bridge inspection reports were performed by Professional Engineers or Certified Bridge Safety Inspectors with over 10 years' experience in bridge inspection. The WSP Team started reviewing the Poor bridges first followed by the Fair bridges, then Good bridges. The inspection report photos were compared to the condition ratings and comments and for reasonableness of the ratings and Maintenance Priorities 0s, 1s, and 2s in the report. In addition, the load ratings were compared to the report findings and condition ratings, again for reasonableness of the load ratings and any weight limit on the bridge. For consistency amongst the consultant teams, WSP developed a spreadsheet with 15 questions for the reviewer to answer regarding the reasonableness of the following:
 - The bridge condition ratings compared to the pictures and descriptions in the inspection report
 - The load rating summary in the inspection report compared to any weight limit signs
 - Any vertical clearance signs compared to measurements in the inspection report
 - Recommendations for new analyses or specialized inspections

The Inspection Report Review Summary spreadsheet can be found in Appendix B.

- Drone Flight Coordination – The drone flights were performed by Aerdia on 16 bridges over several days in late September and early to mid-October. These 16 bridges were observed by drone because they were not easily accessible with a ladder or manlift. The Skydio 2+ drone was used for this project. The drone uses state of the art technology to obtain the highest image quality while promoting safety of both people and structures in the vicinity. WSP accompanied Aerdia to assist with the documentation of the photos and video. A press release was provided for 1 site to coordinate with PennDOT and the City's emergency management services, to avoid alarming the public about the drone usage, and to give media the opportunity to view the drone flight operation. See Appendix C for a complete list of drone bridges. Sample Drone Photos can be found in Appendix D.

3. Conclusions

- The City should verify or create a plan of action for the Maintenance Priority 0s and 1s listed above, for the repair work to be performed in accordance with PennDOT time requirements (Priority 0 = 7 days, Priority 1 = 6 months).
- The City should consider performing repair work on Maintenance Priority 2's that could turn into 1s as the budget and time permits.
- The City should consider mitigating Priority 0s to turn them into Priority 1s, whenever possible, to allow for more time to resolve the long-term repair. Examples include placing guide rail across the barrier opening at the Bloomfield Bridge and adding steel plates to cover holes in sidewalks.
- Based on communications with the City since October 4th, 2022, the City has and will continue to look for opportunities for immediate action on the 0s and 1s. The City has 30 work orders

in motion which will resolve 6 Priority 0s and 24 Priority 1s. A potential prioritization list could be as follows:

1. Quick Wins – These Maintenance Priority items would be 0s and 1s that the City could quickly resolve, such as missing or insufficient vertical clearance and weight limit signs as listed in the Executive Summary.
 2. Maintenance Priorities that are already in the queue and new 0s: These items would include Maintenance Priorities that are already under contract to be completed, as well as any 0s that were newly identified as part of this Report.
 - a. Resolve Maintenance Priorities on 32 Poor Bridges
 - b. Take action on any sidewalk or pedestrian or vehicular bridge closures or demolition, as recommended above in the Executive Summary, or perform repair work that would eliminate the need for the closure
 - c. Prioritize by order of severity of remaining Maintenance Priorities
 - d. Prioritize by order of highest to lowest ADT of bridges with remaining Maintenance Priorities
 - e. Consider including bridge preservation candidates in the priority list, especially ones that are in good condition with leaking expansion joints only
 - f. Consider TIP projects that are about to be let
- As the 2022 and 2023 bridge inspections continue to be completed, please send that information to the WSP team so that the new findings can be incorporated into the Final Report and into future remaining tasks in Work Order 1.
 - The City should consider additional inspections and analyses as recommended above.
 - As part of this contract, the WSP Team will continue with the following next steps:
 - Develop a list of intermediate/near term needs
 - Review and Compare the City's current repair plan and Transportation Improvement Program (TIP) to the intermediate/near term needs
 - Develop recommended strategies and timeframes for preventative and routine maintenance
 - Develop recommended intervals for bridge rehabilitation and/or replacement. This step will include a review of PennDOT's Bridge Care System and possibly other bridge management systems that determine project scopes of work/priorities.
 - Develop a plan to create a Bridge Maintenance Division
 - Make recommendations for staffing of the Bridges and Structures Divisions (engineering/technical staff)
 - Recommend improvements to project delivery processes from idea to construction for State/Federal Funded Projects
 - Recommend improvements to project delivery processes from idea to construction for City-Funded Projects

Appendix A

Master List of City Bridges

92 Total Vehicular, NBIS Bridge
 8 Total Vehicular, non-NBIS Bridge
 47 Total Pedestrian Bridge

CITY OF PITTSBURGH - BRIDGE INVENTORY AS OF 10/19/2022 - Provided by City of Pittsburgh

Review Consultant	Active* City Bridge	BRKEY	BMS Number	City Number	City Name (Facility)	Featured Intersection	Feature Crossed Category	Owner	Condition	Length (ft)	Deck Area (sq ft)	# of Spans	Material	Structure Type	Year Built	Posting Status	Weight Limit Single	Weight Limit Combo	Deck Condition	Superstructure Condition	Substructure Condition	Culvert Condition	Last Inspection	Next Inspection	Est. ADT	Utilities	# of Sidewalks (0 - 3)
WSP	Y	2392	02 7301 0000 3001	1	Alexander St	Saw Mill Run	Water	C	Fair	42	496	1	Steel	Girder riv/thru	1924	OPEN, NO RESTRICTION	N/A	N/A	7 - Good	5 - Fair	5 - Fair	N - N/A	6/14/2022	6/14/2024	>500	CITY OF PGH. WATER	0
A&A	Y	54600	02 7301 0000 3031	3	Frankie Mae Pace Park (The Cap)	I-579	Highway	Split	Very Good	265.00		3	Prestressed precast concrete (P/S)	Box Beam	2021	OPEN, NO RESTRICTION	N/A		8 - Very Good	8 - Very Good	8 - Very Good	N - N/A	1/21/2022	1/21/2024		DLC, Verizon, Peoples, PWSA, Lennon Smith, Extenetsystems	3
SAI	Y	2394	02 7301 0000 3005	5	Charles Anderson Bridge (Blvd of the Allies)	CSX RR & Junction Hollow Trail	Railroad	C	Poor	780	45240	3	Steel	Truss - deck	1938	POSTED FOR LOAD	32	40	5 - Fair	4 - Poor	4 - Poor	N - N/A	4/7/2022	10/7/2022	17400	N/A	2
Azalea	Y	2395	02 7301 0000 3006	6	Ansonia PI (CLOSED, STILL IN USE)	Saw Mill Run	Water	C	Poor	36	1098	1	Concrete encased steel	I beams	1925	CLOSED TO ALL TRAFFIC	N/A	N/A	3 - Serious	4 - Poor	5 - Fair	N - N/A	6/14/2022	6/14/2023	CLOSED TO ALL TRAFFIC	Columbia Gas, COLUMBIA GAS (2" DIA LINE, 4" CASING)	2
SAI	Y	2396	02 7301 0000 3007	7	Bajo St (off Becks Run Rd)	Tributary to Beck's Run	Water	C	Poor	18	270	1	Steel	Multibeam	Unknown	POSTED FOR LOAD	10	N/A	5 - Fair	4 - Poor	4 - Poor	6 - Satisfactory	11/16/2021	11/16/2022	>500	N/A	0
A&A	Y	1230	02 7301 0000 3008	8	Baum Blvd	NS RR & PAT East Busway	Railroad	C	Fair	370	22200	3	Steel	I-welded beams	1913	OPEN, NO RESTRICTION	N/A	N/A	6 - Satisfactory	7 - Good	5 - Fair	N - N/A	5/15/2021	5/15/2023	21225	DUQUESNE LIGHT CO 301 GRANT ST.PGH,PA 15219	2
Azalea	Y	2397	02 7301 0000 3009	9	Bigelow Blvd Underpass	Below Bloomfield Bridge Ramp F	Highway	C	Fair	27	1526	1	Concrete (cast in place)	Frame culvert	1986	OPEN, NO RESTRICTION	N/A	N/A	N - N/A	N - N/A	N - N/A	6 - Satisfactory	3/14/2022	9/2/2022	6900	N/A	0
Mackin	Y	2398	02 7301 0000 3010	10	Bloomfield Bridge	NS RR & CSX RR & PAT East Busway	Railroad	C	Fair	1541	104326	9	Steel	I-welded beams	1986	OPEN, NO RESTRICTION	N/A	N/A	6 - Satisfactory	6 - Satisfactory	5 - Fair	N - N/A	4/19/2021	4/19/2023	24472	PWSA, DLC, Bell Tel Co	2
Azalea	Y	69499	02 7301 0000 3169	12	Broome St Pedestrian Bridge (353 Baldwin Rd) (ABANDONED?)	Streets Run	Water	C																		N/A	
Azalea	Y			13	Mon Wharf Switchback Pedestrian Bridge	Hillside	Other	C								OPEN, NO RESTRICTION							Unknown	TBD		N/A	3
Azalea	Y	2399	02 7301 0000 3014	14	Calera St #1	Streets Run	Water	C	Poor	32	656	1	Steel	I beams	1931	POSTED FOR LOAD	12	N/A	6 - Satisfactory	3 - Serious	4 - Poor	N - N/A	7/28/2022	1/28/2023	>500	Peoples, 4" GAS LINE	1
A&A	Y	49060	02 7301 0000 3015	15	Calera St #2	Tributary to Streets Run	Water	C	Poor	20	300	1	Concrete	Slab (solid)	Unknown	POSTED FOR LOAD	12	N/A	5 - Fair	4 - Poor	5 - Fair	6 - Satisfactory	11/16/2021	11/16/2022	>500	Peoples	1
SAI	Y	53484	02 7301 0000 3152	16	Carnahan Rd (at Banksville Rd) (NEW #)	Tributary to Saw Mill Run	Water	C	Very Good	16	1152	1	Concrete	Pre-Cast Box Culvert	2019	OPEN, NO RESTRICTION	N/A	N/A	8 - Very Good	8 - Very Good	8 - Very Good	8 - Very Good	1/27/2022	1/27/2024	4800	PWSA, Comcast, Verizon, DLC, PA Water, Columbia	2
A&A	Y	2401	02 7301 0000 3018	18	Corliss St Tunnel	Below PAT West Busway & NS RR	Railroad	C	Fair	451		N/A	Concrete	Concrete Arch	1914	N/A	N/A	N/A	N - N/A	N - N/A	N - N/A	5 - Fair	4/8/2022	4/8/2023	12243	N/A	1
Mackin	Y	2472	02 7301 0000 9001	19	Centre Ave	NS RR & PAT East Busway	Railroad	Split	Poor	223	13380	3	Steel	I-welded beams	1979	OPEN, NO RESTRICTION	N/A	N/A	6 - Satisfactory	6 - Satisfactory	3 - Serious	N - N/A	5/24/2022	11/24/2022	18146	DLC, DUQUESNE LIGHT CO, CITY OF PITTSBURGH WATER CO, EQUITABLE GAS CO	2
A&A	Y	2402	02 7301 0000 3020	20	Chartiers Ave	PAT West Busway	Highway	C	Fair	91	5460	3	Steel	I beams	1908	OPEN, NO RESTRICTION	N/A	N/A	5 - Fair	5 - Fair	5 - Fair	N - N/A	10/26/2021	10/26/2023	8795	DLC, Verizon, Peoples, PAWC, 8" CITY OF PITTSBURGH WATER LINE - ABANDONED, 8" WATER LINE - PA W/C, BELL TELEPHONE RACEWAY, 12' COLUMBIA GAS LINE	2
Mackin	Y	2403	02 7301 0000 3021	21	West Carson St	Chartiers Creek	Water	Split	Poor	144	5702	1	Steel	Truss - thru	1925	POSTED FOR LOAD	35	40	5 - Fair	5 - Fair	4 - Poor	N - N/A	8/26/2021	8/26/2022	10700	BELL TELEPHONE, WEST PENN WATER	1
Azalea	Y	2404	02 7301 0000 3022	22	Columbus Ave	NS RR	Highway	Split	Fair	237	11850	3	Steel	Truss - thru	1907	POSTED FOR LOAD	31	33	7 - Good	5 - Fair	5 - Fair	N - N/A	7/28/2022	7/28/2023	No Information	DLC, DUQUESNE LIGHT CO. 301 GRANT ST. PGH.,PA., EQUITABLE GAS CO. 2344 W.INGOMAR RD. PGH, PA	1
A&A	Y	2405	02 7301 0000 3023	23	Crane Ave	Saw Mill Run	Water	C	Fair	72	1008	2	Steel	Arch culvert	1983	OPEN, NO RESTRICTION	N/A	N/A	N - N/A	N - N/A	N - N/A	6 - Satisfactory	10/12/2021	10/12/2023	7800	BELL TELEPHONE CO, DUQUESNE LIGHT CO	2
A&A	Y	2406	02 7301 0000 3024	24	Davis Ave Bridge (DEMOED- TO BE REBUILT)	Woods Run Ave	Street	C															N/A	N/A			
A&A	Y	69497	02 7301 0000 3167	25	Lake Elizabeth Pedestrian Bridge #1 (East)	Lake Elizabeth	Water	C				3	Concrete	Concrete Arch	1966								10/21/2022	10/21/2027		N/A	3
Mackin	Y	69498	02 7301 0000 3168	26	Lake Elizabeth Pedestrian Bridge #2 (West)	Lake Elizabeth	Water	C				3	Concrete	Concrete Arch	1966								10/21/2022	10/21/2027		N/A	3
Azalea	Y	2407	02 7301 0000 3027	27	Eads St	Tributary to Beck's Run	Water	C	Fair	26	325	1	Steel	I beams	1952	OPEN, NO RESTRICTION	N/A	N/A	7 - Good	7 - Good	6 - Satisfactory	N - N/A	7/27/2021	7/27/2023	>500		0
A&A	Y	2408	02 7301 0000 3028	28	Edgebrook Ave	Saw Mill Run	Water	C	Fair	37	1184	1	Steel	I beams	1914	OPEN, NO RESTRICTION	N/A	N/A	8 - Very Good	8 - Very Good	7 - Good	N - N/A	6/14/2022	6/14/2024	1871	Peoples, EQUITABLE GAS	1
A&A	Y	2409	02 7301 0000 3029	29	Elizabeth St	CSX RR & Gloster St	Railroad	C	Poor	115	4370	2	Steel	I beams	1900	OPEN, NO RESTRICTION	N/A	N/A	4 - Poor	6 - Satisfactory	4 - Poor	N - N/A	6/6/2022	12/6/2022	1375-2790	Verizon, Gas	2
A&A	Y	49081	02 7301 0000 3030	30	Englewood Pedestrian Bridge (Englert St)	Saw Mill Run	Water	C	Good	100	900	1	Steel Simple Span	Truss - thru	2001	OPEN, NO RESTRICTION	N/A	N/A	7 - Good	7 - Good	7 - Good	N - N/A	11/8/2021	11/8/2023		N/A	3
SAI	Y	2470	02 7301 0000 3831	31	E Liberty Blvd (NB)	Pedestrian Walkway	Water	C	Fair	52	1914	1	Prestressed precast concrete (P/S)	Box beam - (spread)	1968	OPEN, NO RESTRICTION	N/A	N/A	5 - Fair	6 - Satisfactory	5 - Fair	N - N/A	8/12/2021	8/12/2023	5800	BELL TELEPHONE CO, DUQUESNE LIGHT CO	1
Mackin	Y	2471	02 7301 0000 3931	31	E Liberty Blvd (SB)	Pedestrian Walkway	Water	C	Poor	52	1914	1	Prestressed precast concrete (P/S)	Box beam - (spread)	1968	OPEN, NO RESTRICTION	N/A	N/A	6 - Satisfactory	6 - Satisfactory	4 - Poor	N - N/A	8/27/2021	8/27/2023	6094	BELL TELEPHONE CO, DUQUESNE LIGHT CO	1
A&A	Y	2410	02 7301 0000 3033	33	Fern Hollow Bridge (Forbes Ave) (COLLAPSED)	Nine Mile Run & Fern Hollow	Water	C																		Peoples	

92 Total Vehicular, NBIS Bridge
 8 Total Vehicular, non-NBIS Bridge
 47 Total Pedestrian Bridge

CITY OF PITTSBURGH - BRIDGE INVENTORY AS OF 10/19/2022 - Provided by City of Pittsburgh

Review Consultant	Active* City Bridge	BRKEY	BMS Number	City Number	City Name (Facility)	Featured Intersection	Feature Crossed Category	Owner	Condition	Length (ft)	Deck Area (sq ft)	# of Spans	Material	Structure Type	Year Built	Posting Status	Weight Limit Single	Weight Limit Combo	Deck Condition	Superstructure Condition	Substructure Condition	Culvert Condition	Last Inspection	Next Inspection	Est. ADT	Utilities	# of Sidewalks (0 - 3)
Mackin	Y	2411	02 7301 0000 3034	34	Forbes Ave	CSX RR & Boundary St	Railroad	C	Fair	159	8904	1	Steel	I-welded beams	1900	OPEN, NO RESTRICTION	N/A	N/A	6 - Satisfactory	7 - Good	7 - Good	N - N/A	9/29/2021	9/29/2023	19831	DLC, Bell Tel, Peoples, Equitable, PWSA	2
SAI	Y	2412	02 7301 0000 3035	35	Fort Pitt Blvd (Commonwealth to Wood)	Mon Wharf Parking Lot	Highway	C	Fair	1623	65407	30	Prestressed precast concrete (P/S)	I beams	2002	OPEN, NO RESTRICTION	N/A	N/A	7 - Good	7 - Good	6 - Satisfactory	N - N/A	11/4/2020	11/4/2022	17921	Verizon, DLC	0
A&A	Y	2413	02 7301 0000 3036	36	Franum St (Ensign Ave)	Saw Mill Run	Water	C	Fair	63	2003	1	Steel	I-welded beams	1981	OPEN, NO RESTRICTION	N/A	N/A	7 - Good	6 - Satisfactory	6 - Satisfactory	N - N/A	4/19/2021	4/19/2023	>1000	N/A	1
Mackin	Y	69496	02 7301 0000 3166	37	Fritz St Pedestrian Bridge at Brosville	Knoxville Incline Overlook Park	Other	C															10/21/2022	10/21/2024		N/A	3
SAI	Y	2414	02 7301 0000 3038	38	Corley St (Ganges Way)	Streets Run	Water	C	Poor	43	602	1	Concrete (cast in place)	Other	1951	OPEN, NO RESTRICTION	N/A	N/A	4 - Poor	5 - Fair	5 - Fair	N - N/A	8/12/2022	8/12/2024	No Information	EQUITABLE GAS CO 3" DIA, 40' LONG	1
Azalea	Y	54496	02 7301 0000 3932	39	Greenfield Bridge (Greenfield Ave) (NEW #)	I-376 Parkway East	Highway	C	Good	468	25178	3	Steel	Arch deck - open	2017	OPEN, NO RESTRICTION	N/A	N/A	8 - Very Good	8 - Very Good	9 - Excellent	N - N/A	10/30/2021	10/30/2023	11424		1
WSP	Y	2416	02 7301 0000 3040	40	Herron Ave	NS RR & CSX RR & PAT East Busway	Railroad	C	Poor	754	34684	7	Steel	I-welded beams	1980	OPEN, NO RESTRICTION	N/A	N/A	5 - Fair	5 - Fair	4 - Poor	N - N/A	6/6/2021	6/6/2023	2856- 5713	Water	2
A&A	Y	2417	02 7301 0000 3041	41	30th St Bridge (Herrs Island)	Allegheny River Back Channel	Water	C	Fair	282	10716	3	Steel	I-welded beams	1986	OPEN, NO RESTRICTION	N/A	N/A	6 - Satisfactory	6 - Satisfactory	5 - Fair	N - N/A	11/16/2020	11/16/2022	2616	CITY WATER AUTHORITY	1
WSP	Y	2418	02 7301 0000 3043	43	Hill Rd (One Wild Place)	Zoo Walkway	Other	C	Fair	49	2597	1	Masonry	Arch deck - closed	1940	OPEN, NO RESTRICTION	N/A	N/A	N - N/A	6 - Satisfactory	6 - Satisfactory	N - N/A	4/19/2021	4/19/2023	11179	Verizon	1
A&A	Y			45	Herr's Island Railroad (Pedestrian) Bridge	Allegheny River Back Channel	Water	C						Truss - thru	1903	OPEN, NO RESTRICTION							Unknown	TBD		N/A	3
A&A	Y			46	Millvale Trail Pedestrian Bridge	Allegheny River Back Channel	Water	C															Unknown	TBD		N/A	3
A&A	Y	2419	02 7301 0000 3047	47	Larimer Ave	Washington Blvd (Rt 8)	Highway	C	Poor	548	25208	8	Concrete (cast in place)	Arch deck - open	1912	POSTED FOR LOAD	36	40	4 - Poor	4 - Poor	4 - Poor	N - N/A	8/4/2021	8/4/2022	4548	DUQUESNE LIGHT CO	2
A&A	Y	2420	02 7301 0000 3048	48	Lincoln Ave	Washington Blvd (Rt 8)	Highway	C	Fair	300	14640	2	Masonry	Arch deck - closed	1905	OPEN, NO RESTRICTION	N/A	N/A	N - N/A	5 - Fair	5 - Fair	N - N/A	3/3/2021	3/3/2023	7033	Verizon, Peoples, BELL TELEPHONE CO 280', EQUITABLE GAS CO 20" 280', WATER LINE, 8", CITY OF PGH.	2
WSP	Y	49084	02 7301 0000 3049	49	Lowe St Pedestrian Bridge	Saw Mill Run	Water	C	Poor	43	602	1	Steel	thru-girder	Unknown	OPEN, NO RESTRICTION	N/A	N/A	N - N/A	4 - Poor	4 - Poor	6 - Satisfactory	11/4/2021	11/4/2022	No Information	Peoples	3
Mackin	Y	2421	02 7301 0000 3050	50	Lowrie St	Rialto St	Street	C	Fair	49	1960	1	Prestressed precast concrete (P/S)	Box beam - adj	1900	OPEN, NO RESTRICTION	N/A	N/A	8 - Very Good	8 - Very Good	5 - Fair	N - N/A	4/28/2021	4/28/2023	900-1200	Peoples, EQUITABLE GAS CO 6" DIA 45" LONG, CITY OF PGH WATER AUTH. 6" DIA.	2
Mackin	Y	2422	02 7301 0000 3051	51	Maple Ave	N Charles St	Street	C	Poor	42	1680	1	Steel	I beams	1929	OPEN, NO RESTRICTION	N/A	N/A	3 - Serious	5 - Fair	4 - Poor	N - N/A	10/25/2021	10/25/2023	>500	N/A	2
WSP	Y	2423	02 7301 0000 3052	52	Robert McAfee Bridge (California Ave)	McClure Ave & Eckert St	Street	C	Fair	642	35759	8	Steel	Truss - deck	1928	OPEN, NO RESTRICTION	N/A	N/A	5 - Fair	5 - Fair	5 - Fair	N - N/A	3/8/2022	9/8/2022	4334	Peoples, DUQUESNE LIGHT CO., EQUITABLE GAS CO.	2
A&A	Y	2424	02 7301 0000 3053	53	McArdle Rdwy	E Sycamore St	Street	C	Poor	454	15890	3	Steel	I-welded beams	1983	OPEN, NO RESTRICTION	N/A	N/A	5 - Fair	7 - Good	4 - Poor	N - N/A	9/27/2021	9/27/2023	No Information	N/A	1
A&A	Y	2425	02 7301 0000 3054	54	McArdle Rdwy	Hillside	Other	C	Fair	298	9536	10	Steel	Other	1929	OPEN, NO RESTRICTION	N/A	N/A	5 - Fair	5 - Fair	5 - Fair	N - N/A	8/6/2021	8/6/2023	9487	N/A	1
WSP	Y	69470	02 7301 0000 3162	55	Frick Lane Parking Lot Road	Fern Hollow Creek	Water	C															10/13/2022	10/13/2024			0
A&A	Y	69495	02 7301 0000 3165	56	Nine Mile Run Trail Pedestrian Bridge	Nine Mile Run	Water	C															10/21/2022	10/21/2026			3
A&A	Y	2426	02 7301 0000 3057	57	Meadow St	Negley Run Blvd	Water	C	Fair	394	19306	10	Concrete (cast in place)	Arch deck - open	1914	OPEN, NO RESTRICTION	N/A	N/A	7 - Good	5 - Fair	5 - Fair	N - N/A	3/11/2022	3/11/2024	5520	DLC, Peoples, DUQUESNE LIGHT COMPANY, EQUITABLE GAS COMPANY	2
A&A	Y	49085	02 7301 0000 3058	58	Melanchton St Pedestrian Bridge	CSX RR	Railroad	C	Satisfactory	300	2310	3	Steel	Truss	Unknown	OPEN, NO RESTRICTION	N/A	N/A	6 - Satisfactory	5 - Fair	6 - Satisfactory	N - N/A	7/8/2022	7/28/2024		N/A	3
WSP	Y	49086	02 7301 0000 3059	59	Midwood Ave Pedestrian Bridge	Saw Mill Run	Water	C	Poor	59	354	2	Steel	Rolled Beams	Unknown	OPEN, NO RESTRICTION	N/A	N/A	5 - Fair	5 - Fair	4 - Poor	N - N/A	10/27/2021	10/27/2023		N/A	3
WSP	Y	2427	02 7301 0000 3060	60	Mission St (East)	Gomer St & Greeley St	Street	C	Fair	225	8100	3	Steel	Girder rbr/deck	1939	POSTED FOR LOAD	32	N/A	5 - Fair	5 - Fair	5 - Fair	N - N/A	9/7/2021	9/7/2022	4143	N/A	2
Azalea	Y	2428	02 7301 0000 3061	61	Mission St (West)	S 21st St	Street	C	Fair	394	14184	3	Steel	Girder rbr/deck	1939	POSTED FOR LOAD	32	N/A	6 - Satisfactory	5 - Fair	5 - Fair	N - N/A	9/9/2021	9/9/2022	4242	N/A	2
WSP	Y	N/A	N/A	63	Fine Way (Mordale St) (COLLAPSED)	Saw Mill Run	Water	C															N/A	TBD			
Azalea	Y	2429	02 7301 0000 3064	64	McArdle Rdwy Viaduct #1	NS RR	Railroad	C	Fair	554	20110	12	Steel	Truss - thru	1933	OPEN, NO RESTRICTION	N/A	N/A	8 - Very Good	6 - Satisfactory	6 - Satisfactory	N - N/A	6/30/2022	6/30/2024	No Information	N/A	1
A&A	Y	2430	02 7301 0000 3065	65	McArdle Rdwy Viaduct #2	Hillside	Other	C	Fair	373	13950	12	Steel	I beams	1934	OPEN, NO RESTRICTION	N/A	N/A	7 - Good	7 - Good	6 - Satisfactory	N - N/A	3/1/2022	3/1/2024	6219	PWSA	1
Mackin	Y	2431	02 7301 0000 3066	66	Murray Ave	Beechwood Blvd	Street	C	Fair	325	19500	3	Steel	Rigid frame	1978	OPEN, NO RESTRICTION	N/A	N/A	7 - Good	7 - Good	5 - Fair	N - N/A	3/4/2022	3/4/2024	11373	Water, Abandoned Electric	2
A&A	Y	2432	02 7301 0000 3067	67	W North Ave & Brighton Rd	NS RR	Railroad	Split	Poor	88	4136	1	Steel	Girder riv/thru	1905	POSTED FOR LOAD	10	19	4 - Poor	4 - Poor	5 - Fair	N - N/A	6/20/2022	6/20/2023	8104	verizon, DLC, Peoples, EQUITABLE GAS CO PITTSBURGH PA, CITY OF PITTSBURGH WATER DEPT PITTSBURGH PA, DUQUESNE LIGHT CO PITTSBURGH PA, BELL TELEPHONE CO PITTSBURGH PA	2

92 Total Vehicular, NBIS Bridge
 8 Total Vehicular, non-NBIS Bridge
 47 Total Pedestrian Bridge

CITY OF PITTSBURGH - BRIDGE INVENTORY AS OF 10/19/2022 - Provided by City of Pittsburgh

Review Consultant	Active* City Bridge	BRKEY	BMS Number	City Number	City Name (Facility)	Featured Intersection	Feature Crossed Category	Owner	Condition	Length (ft)	Deck Area (sq ft)	# of Spans	Material	Structure Type	Year Built	Posting Status	Weight Limit Single	Weight Limit Combo	Deck Condition	Superstructure Condition	Substructure Condition	Culvert Condition	Last Inspection	Next Inspection	Est. ADT	Utilities	# of Sidewalks (0 - 3)
A&A	Y	49087	02 7301 0000 3068	68	N Lang Ave Pedestrian Bridge	NS RR & PAT East Busway	Railroad	C	Very Good	122	1359	1	Steel	girder	1980	OPEN, NO RESTRICTION	N/A	N/A	8 - Very Good	8 - Very Good	7 - Good	N - N/A	8/5/222	8/5/2024		N/A	3
A&A	Y	49088	02 7301 0000 3071	71	Overbrook Blvd Pedestrian Bridge	Saw Mill Run	Water	C	Good	66	594	1	Steel	Thru-Truss	2001	OPEN, NO RESTRICTION	N/A	N/A	6 - Satisfactory	7 - Good	7 - Good	N - N/A	11/8/2021	11/8/2023		N/A	3
Azalea	Y	2473	02 7301 0000 9002	72	Penn Ave	NS RR & PAT East Busway	Railroad	Split	Poor	126	10395	2	Steel	I beams	1981	OPEN, NO RESTRICTION	N/A	N/A	6 - Satisfactory	5 - Fair	4 - Poor	N - N/A	5/24/2022	5/24/2023	No Information	DUQUESNE LIGHT CO.	2
Azalea	Y	49066	02 7301 0000 3073	73	Pensdale St Bridge No. 1	Bell Run	Water	C	Satisfactory	9	198	1	Concrete	Box Culvert	Unknown	OPEN, NO RESTRICTION	N/A	N/A	8 - Very Good	N - N/A	6 - Satisfactory	6 - Satisfactory	11/8/2021	11/8/2023	>500	N/A	0
WSP	Y	49067	02 7301 0000 3074	74	Pensdale St Bridge No. 2	Bell Run	Water	C	Poor	9	198	1	Concrete	Box Culvert	Unknown	OPEN, NO RESTRICTION	N/A	N/A	5 - Fair	N - N/A	N - N/A	4 - Poor	11/8/2021	11/8/2023	>500	Peoples	0
Mackin	Y	2433	02 7301 0000 3075	75	Pennsylvania Ave	NS RR	Railroad	Split	Fair	153	9180	1	Steel	Girder weld/thru	1986	OPEN, NO RESTRICTION	N/A	N/A	6 - Satisfactory	5 - Fair	5 - Fair	N - N/A	9/26/2020	9/26/2022	3625	Peoples, DEPT. OF WATER CITY OF PITTSBURGH PA 15219, EQUITABLE GAS CO. 420 BLVD OF ALLIES 15219	2
A&A	Y	744	02 7301 0000 3933	77	Parking Lot Bridge at Woodruff St	Saw Mill Run Blvd	Highway	C	Poor			3	Steel						5 - Fair	4 - Poor	3 - Serious	N - N/A	4/29/2022	10/29/2023	No Information	N/A	0
SAI	Y	2435	02 7301 0000 3078	78	Radcliffe St	GW RR	Railroad	C	Fair	50	2000	1	Steel	I beams	1983	OPEN, NO RESTRICTION	N/A	N/A	7 - Good	7 - Good	6 - Satisfactory	N - N/A	9/30/2020	9/30/2022	1200-1700	Peoples, EQUITABLE GAS CO	2
SAI	Y	49089	02 7301 0000 3080	80	Reservoir Drive	Highland Park Walking Trail	Other	C	Satisfactory	44	528	1	Stone	Culvert	1895	OPEN, NO RESTRICTION	N/A	N/A	6 - Satisfactory	N - N/A	N - N/A	6 - Satisfactory	12/1/2021	12/1/2023	No Information	N/A	0
A&A	Y	2436	02 7301 0000 3081	81	Ridge Ave (DEMOED)	NS RR	Railroad	Split															7/20/2020	7/20/2022			
Mackin	Y	2437	02 7301 0000 3082	82	River Ave Viaduct	Three Rivers Heritage Trail	Other	C	Poor	179	6587	6	Steel	I beams	1939	OPEN, NO RESTRICTION	N/A	N/A	6 - Satisfactory	5 - Fair	4 - Poor	N - N/A	11/17/2020	11/17/2022	3367	Verizon, BELL TELEPHONE	1
A&A	Y	2438	02 7301 0000 3084	84	Schenley Dr	CSX RR & Boundary St	Railroad	C	Fair	480	38400	3	Steel	Truss - deck	1896	OPEN, NO RESTRICTION	N/A	N/A	6 - Satisfactory	5 - Fair	6 - Satisfactory	N - N/A	5/6/2021	5/6/2023	3465	N/A	2
WSP	Y	2439	02 7301 0000 3085	85	Panther Hollow Rd	Panther Hollow Lake	Water	C	Fair	640	40320	5	Steel	Truss - deck	1896	OPEN, NO RESTRICTION	N/A	N/A	7 - Good	5 - Fair	6 - Satisfactory	N - N/A	5/12/2021	5/12/2023	8259	N/A	2
A&A	Y	2440	02 7301 0000 3086	86	Panther Hollow Overpass	Overlook Dr	Highway	C	Fair	59	3027	1	Prestressed precast concrete (P/S)	Box beam - adj	1988	OPEN, NO RESTRICTION	N/A	N/A	5 - Fair	5 - Fair	6 - Satisfactory	N - N/A	9/1/2020	9/21/2022	14974	N/A	0
SAI	Y	2441	02 7301 0000 3087	87	Schenley Park Panther Hollow Trail #1	Schenley Park Stream	Water	C	Fair	45	1238	1	Concrete (cast in place)	Arch deck - closed	1939	OPEN, NO RESTRICTION	N/A	N/A	N - N/A	6 - Satisfactory	6 - Satisfactory	N - N/A	3/8/2021	3/8/2023		N/A	3
Mackin	Y	2442	02 7301 0000 3088	88	Schenley Park Panther Hollow Trail #2	Schenley Park Stream	Water	C	Satisfactory	12	192	1	Steel	Corrugated Arch	1939	OPEN, NO RESTRICTION	N/A	N/A	N - N/A	N - N/A	N - N/A	6 - Satisfactory	12/1/2021	12/1/2023		N/A	3
A&A	Y	2443	02 7301 0000 3089	89	Schenley Park Panther Hollow Trail #3	Schenley Park Stream	Water	C	Satisfactory	12	192	1	Steel	Corrugated Arch	1939	OPEN, NO RESTRICTION	N/A	N/A	N - N/A	N - N/A	N - N/A	6 - Satisfactory	12/1/2021	12/1/2023		N/A	3
Mackin	Y	2444	02 7301 0000 3090	90	Schenley Park Panther Hollow Trail #4	Schenley Park Stream	Water	C	Fair	56	1333	1	Concrete (cast in place)	Arch deck - closed	1939	OPEN, NO RESTRICTION	N/A	N/A	N - N/A	6 - Satisfactory	6 - Satisfactory	N - N/A	3/8/2021	3/8/2023		N/A	3
Azalea	Y	2445	02 7301 0000 3091	91	Schenley Park Locust/Bridle Trail #1	Schenley Park Stream	Water	C	Fair	18	270	1	Steel-lined Stone Arch	Corrugated Arch	1939	OPEN, NO RESTRICTION	N/A	N/A	N - N/A	N - N/A	N - N/A	5 - Fair	11/11/2021	11/11/2023		N/A	3
Azalea	Y	2446	02 7301 0000 3092	92	Schenley Park Locust/Bridle Trail #2	Schenley Park Stream	Water	C	Fair	18	270	1	Steel-lined Stone Arch	Corrugated Arch	1939	OPEN, NO RESTRICTION	N/A	N/A	N - N/A	N - N/A	N - N/A	5 - Fair	11/11/2021	11/11/2023		N/A	3
Azalea	Y	2447	02 7301 0000 3093	93	Second Ave (CLOSED TO VEHICLES)	Nine Mile Run	Water	C	Poor	80	1320	1	Steel	Simple-span	1886	POSTED FOR LOAD	11	N/A	8 - Very Good	4 - Poor	4 - Poor	N - N/A	3/23/2020	3/23/2021	No Information		3
WSP	Y	54694	02 7301 0000 3094	94	McFarren St	Nine Mile Run	Water	C	Good	130	3705	1	Steel	I-welded beams	2020	OPEN, NO RESTRICTION	N/A	N/A	8 - Very Good	8 - Very Good	8 - Very Good	N - N/A	9/28/2020	9/28/2022	No Information	CITY OF PITTSBURGH WATER AUTHORITY	1
WSP	Y	2448	02 7301 0000 3095	95	Shadeland Ave	Woods Run Ave & Lecky Ave & Courtright St	Street	C	Fair	772	33582	5	Steel	I-welded beams	1993	OPEN, NO RESTRICTION	N/A	N/A	6 - Satisfactory	7 - Good	6 - Satisfactory	N - N/A	8/11/2021	8/1/2023	3452	DLC	2
WSP	Y	2449	02 7301 0000 3097	97	Shaler St	Saw Mill Run	Water	C	Poor	58	2291	1	Steel	Girder riv/deck	1900	OPEN, NO RESTRICTION	N/A	N/A	4 - Poor	5 - Fair	4 - Poor	N - N/A	10/12/2021	10/12/2023	2969	Peoples, EQUITABLE GAS CO 16" (BAY 1), CITY OF PITTSBURGH WATER (2-12" DIA/BAY 2)	1
Azalea	Y	2450	02 7301 0000 3098	98	S Aiken Ave	NS RR & PAT East Busway	Railroad	C	Fair	212	11872	3	Steel	I beams	1929	OPEN, NO RESTRICTION	N/A	N/A	5 - Fair	7 - Good	5 - Fair	N - N/A	10/24/2020	10/24/2022	12928	Peoples, EQUITABLE GAS COMPANY 12" DIA PIPE	2
A&A	Y	49090	02 7301 0000 3099	99	S Graham St Pedestrian Bridge	NS RR & PAT East Busway	Railroad	C	Satisfactory	93	833	1	Steel	Girders	1980	OPEN, NO RESTRICTION	N/A	N/A	7 - Good	8 - Very Good	6 - Satisfactory	N - N/A	8/5/2022	8/5/2024	No Information	N/A	3
A&A	Y	48206	02 7301 0000 3100	100	S Highland Ave (NEW #)	NS RR & PAT East Busway & Ellsworth Ave	Railroad	C	Good	117	7289	2	Steel	I beams	2013	OPEN, NO RESTRICTION	N/A	N/A	8 - Very Good	8 - Very Good	7 - Good	N - N/A	11/29/2021	11/29/2023	9070	DLC, PGH WATER AND SEWER AUTHORITY	2
Azalea	Y	2452	02 7301 0000 3101	101	S Millvale Ave	NS RR & PAT East Busway & Gross St	Railroad	C	Fair	460	25760	9	Steel	Girder riv/deck	1927	OPEN, NO RESTRICTION	N/A	N/A	7 - Good	5 - Fair	6 - Satisfactory	N - N/A	3/16/2022	3/16/2024	8025	Verizon, DLC, BELL TELEPHONE OXFORD CENTRE, DUQUESNE LIGHT 201 STANWIX ST	2
A&A	Y	2453	02 7301 0000 3102	102	S Negley Ave	NS RR & PAT East Busway	Railroad	C	Poor	106	5300	1	Steel	Truss - thru	1924	OPEN, NO RESTRICTION	N/A	N/A	5 - Fair	5 - Fair	4 - Poor	N - N/A	11/19/2021	11/19/2022	13469	Peoples, EQUITABLE GAS PITTSBURGH PA (412) 471-8531	2
Mackin	Y	2474	02 7301 0000 9010	103	Seventh Ave PRT OWNERSHIP?	PAT LRT Spur	Railroad	P	Poor	37	3023	1	Concrete encased steel	I beams	1925	OPEN, NO RESTRICTION	N/A	N/A	5 - Fair	5 - Fair	4 - Poor	N - N/A	5/24/2022	5/24/2024	20400	N/A	2
A&A	Y	2454	02 7301 0000 3104	104	S 12th St	NS RR	Railroad	C	Good	75	3038	1	Steel	I beams	1901	OPEN, NO RESTRICTION	N/A	N/A	7 - Good	8 - Very Good	7 - Good	N - N/A	10/11/2020	10/11/2022	4938	N/A	1
A&A	Y			105	Spahr St (East Liberty) Pedestrian Bridge	NS RR & PAT East Busway	Railroad	C															Unknown	TBD		Railroad Power, Verizon, Comcast	3
A&A	Y	2455	02 7301 0000 3106	106	Stanwix St	I-376 WB (Parkway East)	Highway	C	Fair	71	6156	1	Steel	Girder riv/deck	1939	OPEN, NO RESTRICTION	N/A	N/A	7 - Good	7 - Good	6 - Satisfactory	N - N/A	12/6/2020	12/6/2022	6898	Yes	1
SAI	Y	2456	02 7301 0000 3109	109	Swindell Bridge	I-279 & East St	Highway	C	Poor	1097	30497	4	Steel	Truss - deck	1930	OPEN, NO RESTRICTION	N/A	N/A	4 - Poor	3 - Serious	5 - Fair	N - N/A	7/2/2022	1/2/2023	3796		2

92 Total Vehicular, NBIS Bridge
 8 Total Vehicular, non-NBIS Bridge
 47 Total Pedestrian Bridge

CITY OF PITTSBURGH - BRIDGE INVENTORY AS OF 10/19/2022 - Provided by City of Pittsburgh

Review Consultant	Active* City Bridge	BRKEY	BMS Number	City Number	City Name (Facility)	Featured Intersection	Feature Crossed Category	Owner	Condition	Length (ft)	Deck Area (sq ft)	# of Spans	Material	Structure Type	Year Built	Posting Status	Weight Limit Single	Weight Limit Combo	Deck Condition	Superstructure Condition	Substructure Condition	Culvert Condition	Last Inspection	Next Inspection	Est. ADT	Utilities	# of Sidewalks (0 - 3)
Mackin	Y	2457	02 7301 0000 3110	110	Swinburne Bridge (Frazier St)	CSX RR & Saline St	Railroad	C	Poor	599	17970	12	Steel	Girder riv/thru	1915	POSTED FOR LOAD	21	29	6 - Satisfactory	4 - Poor	4 - Poor	N - N/A	4/15/2022	10/15/2022	4929	CITY OF PITTSBURGH ST. LIGHTING	1
SAI	Y	2458	02 7301 0000 3112	112	Brighton Heights Blvd (Termon Ave)	Verner Ave	Street	C	Poor	75	4440	1	Prestressed precast concrete (P/S)	I beams	1930	OPEN, NO RESTRICTION	N/A	N/A	5 - Fair	7 - Good	4 - Poor	N - N/A	8/27/2021	8/27/2023	10734	Water, Columbia Gas, Equitable Gas, Bell Telephone, DLC	2
Azalea	Y	2459	02 7301 0000 3113	113	Timberland Ave (CLOSED)	Saw Mill Run	Water	C	Poor	32	448	1	Concrete (cast in place)	Other	1909	CLOSED TO ALL TRAFFIC	N/A	N/A	1 - Imminent Failure	1 - Imminent Failure	3 - Serious	N - N/A	10/12/2021	10/12/2023	CLOSED TO ALL TRAFFIC	COLUMBIA GAS CO 3" DIA, 29' LONG	0
Mackin	Y	2460	02 7301 0000 3114	114	Troy Hill Rd	Hillside	Other	C	Fair	52	1170	3	Concrete (cast in place)	Slab (solid)	1965	OPEN, NO RESTRICTION	N/A	N/A	5 - Fair	5 - Fair	5 - Fair	N - N/A	9/4/2020	9/4/2022	3355	EQUITABLE GAS CO 6" LINE	1
A&A	Y	2461	02 7301 0000 3115	115	28th St	NS RR & PAT East Busway & Sasfras Way	Railroad	C	Poor	315	7781	5	Steel	Truss - thru	1931	POSTED FOR LOAD	26	32	5 - Fair	4 - Poor	6 - Satisfactory	N - N/A	4/26/2022	10/26/2022	10119	Peoples, EQUITABLE GAS COMPANY, PITTSBURGH TELECOMMUNICATION S INC, BELL TELEPHONE / SINGLE CABLE THROUGH TRUSS	2
SAI	Y	49098	02 7301 0000 3116	116	Calera St to Baldwin Rd Pedestrian Bridge	Streets Run	Water	C	Satisfactory	35	175	1	Steel	simple-span	Unknown	OPEN, NO RESTRICTION	N/A	N/A	7 - Good	6 - Satisfactory	6 - Satisfactory	N - N/A	10/18/2022	10/18/2026			3
A&A	Y	55802	02 7301 0000 3119	118	West Ohio St Bridge (NEW #)	NS RR	Railroad	C	Good	71	4402	1	Steel	I beams	1903	OPEN, NO RESTRICTION	N/A	N/A	8 - Very Good	8 - Very Good	7 - Good	N - N/A	11/5/2021	11/5/2023	No Information	Verizon	2
A&A	Y	69326	02 7301 0000 3156	119	Wilksboro Ave Pedestrian Bridge (CLOSED)	Tributary to Jack's Run	Other	C	Poor	370	2220	13	Steel	I beams	1895	CLOSED TO ALL TRAFFIC	N/A	N/A	N - N/A	4 - Poor	1 - Imminent Failure	N - N/A	1/4/2022	1/4/2024	CLOSED TO ALL TRAFFIC		3
A&A	Y	2463	02 7301 0000 3120	120	Wood St	I-376 WB (Parkway East)	Highway	C	Fair	70	6650	1	Steel	Girder riv/deck	1939	OPEN, NO RESTRICTION	N/A	N/A	7 - Good	7 - Good	6 - Satisfactory	N - N/A	12/13/2020	12/13/2022	7100	Verizon, DLC	2
A&A	Y	2464	02 7301 0000 3121	121	Market St	I-376 WB (Parkway East) & Fort Pitt Blvd	Highway	C	Fair	73	5694	1	Steel	I beams	1940	OPEN, NO RESTRICTION	N/A	N/A	7 - Good	7 - Good	6 - Satisfactory	N - N/A	12/17/2021	12/17/2022	2215		0
A&A	Y	2465	02 7301 0000 3122	122	Commercial St	Nine Mile Run	Water	C	Fair	66	660	1	Concrete	Concrete Arch	1930	OPEN, NO RESTRICTION	N/A	N/A	N - N/A	N - N/A	N - N/A	5 - Fair	12/15/2021	12/15/2023	No Information		0
Azalea	Y	2466	02 7301 0000 3123	123	E Sycamore St	Hillside	Other	C	Fair	190	7125	2	Steel	I-welded beams	1984	OPEN, NO RESTRICTION	N/A	N/A	6 - Satisfactory	6 - Satisfactory	6 - Satisfactory	N - N/A	10/12/2021	10/12/2023	8775		1
SAI	Y	49091	02 7301 0000 3124	124	Anderson Playground Pedestrian Tunnel	Bldv of the Allies	Highway	C	Satisfactory	54	648	1	Concrete	Box Culvert	1940	OPEN, NO RESTRICTION	N/A	N/A	7 - Good	N - N/A	N - N/A	6 - Satisfactory	11/11/2021	11/11/2023	17000		3
A&A	Y	2467	02 7301 0000 3125	125	Goettman St	Hillside	Other	C	Fair	121	2118	4	Concrete (cast in place)	T-beams	1950	OPEN, NO RESTRICTION	N/A	N/A	6 - Satisfactory	6 - Satisfactory	5 - Fair	N - N/A	6/4/2021	6/4/2023	No Information		1
SAI	Y	49068	02 7301 0000 3127	127	Baldwick Road No. 1	Bell Run	Water	C	Satisfactory	10	340	1	Concrete	Slab (solid)	1929	OPEN, NO RESTRICTION	N/A	N/A	6 - Satisfactory	6 - Satisfactory	6 - Satisfactory	5 - Fair	10/25/2021	10/25/2023	No Information		2
WSP	Y	49069	02 7301 0000 3128	128	Baldwick Road No. 2	Bell Run	Water	C	Satisfactory	10	260	1	Concrete	Slab (solid)	1929	OPEN, NO RESTRICTION	N/A	N/A	6 - Satisfactory	6 - Satisfactory	6 - Satisfactory	6 - Satisfactory	10/25/2021	10/25/2023	No Information		2
Azalea	Y	2468	02 7301 0000 3130	130	Larimer Ave	AV RR	Railroad	C	Fair	124	5456	1	Steel	I-welded beams	1904	OPEN, NO RESTRICTION	N/A	N/A	7 - Good	7 - Good	6 - Satisfactory	N - N/A	8/20/2021	8/20/2023	4542	CITY OF PITTSBURGH WATER LINE 20"	2
WSP	Y	570	02 7301 0000 3131	131	Chestnut St	PA 28	Highway	C	Good	151	9891	2	Steel	I-welded beams	1988	OPEN, NO RESTRICTION	N/A	N/A	7 - Good	7 - Good	7 - Good	N - N/A	6/17/2022	6/17/2024	8535	DLC	2
SAI	Y	1041	02 0279 0016 0998	132	Tripoli St	I-279 & I-579	Highway	C	Fair	264	14177	2	Steel	I-welded beams	1987	OPEN, NO RESTRICTION	N/A	N/A	6 - Satisfactory	7 - Good	7 - Good	N - N/A	5/25/2022	5/25/2024	>1000		2
SAI	Y	1042	02 0279 0016 1235	133	E North Ave	I-279 & I-579	Highway	C	Fair	255	11399	2	Steel	I-welded beams	1987	OPEN, NO RESTRICTION	N/A	N/A	6 - Satisfactory	7 - Good	7 - Good	N - N/A	5/25/2022	5/25/2024	1132-1800	12" GAS LINE	1
SAI	Y	1047	02 0279 0016 1799	134	Ramp Q	I-279 & I-579	Highway	C	Good	248	9300	2	Steel	I-welded beams	1987	OPEN, NO RESTRICTION	N/A	N/A	6 - Satisfactory	6 - Satisfactory	7 - Good	N - N/A	5/25/2022	5/25/2024	600		0
A&A	Y	49092	02 7301 0000 3135	135	Howard St Pedestrian Bridge	I-279	Highway	C	Very Good	266	2128	2	Steel	Multibeam	Unknown	OPEN, NO RESTRICTION	N/A	N/A	8 - Very Good	8 - Very Good	8 - Very Good	N - N/A	Unknown	TBD	No Information		3
WSP	Y	1060	02 7301 0000 3136	136	Milroy St	I-279	Highway	C	Poor	354	11894	3	Steel	I-welded beams	1986	OPEN, NO RESTRICTION	N/A	N/A	6 - Satisfactory	6 - Satisfactory	4 - Poor	N - N/A	4/13/2021	4/13/2023	2566		1
A&A	Y	1062	02 7301 0000 3137	137	East St (Service Road)	I-279	Highway	C	Fair	450	20520	3	Steel	Rigid frame	1986	OPEN, NO RESTRICTION	N/A	N/A	7 - Good	7 - Good	6 - Satisfactory	N - N/A	4/14/2021	4/14/2023	2619		1
WSP	Y	49094	02 7301 0000 3138	138	Bloomfield Pedestrian Bridge	Bigelow Blvd	Highway	C															6/1/2022	6/1/2024		N/A	3
WSP	Y	49093	02 7301 0000 3139	139	Finland St Pedestrian Bridge (SUPERSTRUCTURE DEMOLISHED)	Bigelow Blvd	Highway	C															5/31/2022	5/31/2022			3
WSP	Y	49095	02 7301 0000 3140	140	S 10th St Pedestrian Bridge	NS RR	Railroad	C			704												9/20/2022	9/20/2024		N/A	3
A&A	Y	49096	02 7301 0000 3141	141	S 15th St Pedestrian Bridge	NS RR	Railroad	C			912												9/20/2022	9/20/2024		N/A	3
A&A	Y	47751	02 7301 0000 3143	143	10th St Bypass off of Fort Duquesne Bridge Ramp (Fancourt St)	10th St Bypass	Highway	C	Fair	123	6150	1	Steel	I-welded beams	2012	OPEN, NO RESTRICTION	N/A	N/A	8 - Very Good	8 - Very Good	6 - Satisfactory	N - N/A	10/28/2021	10/28/2023	4632	N/A	0
SAI	Y	2469	02 7301 0000 3144	144	Hilburn St Pedestrian Bridge	Irwins Run	Water	C	Fair	24	300	1	Steel	I beams	1995	OPEN, NO RESTRICTION	N/A	N/A	6 - Satisfactory	6 - Satisfactory	7 - Good	N - N/A	6/3/2021	6/3/2023			3
WSP	Y	40785	02 7301 0000 3145	145	Hot Metal Bridge	Mon River & RR Spur	Water	C	Fair	1117	30718	7	Steel	Truss - thru	1904	OPEN, NO RESTRICTION	N/A	N/A	7 - Good	5 - Fair	5 - Fair	N - N/A	4/22/2022	4/22/2024	21136	DLC	0
A&A	Y			146	Hot Metal Pedestrian Bridge #1	Mon River & RR Spur	Water	C															Unknown	TBD			3
A&A	Y	40788	02 7301 0000 3147	147	Hot Metal St	CSX RR	Railroad	C	Good	73	5037	1	Prestressed precast concrete (P/S)	Box beam - (spread)	2000	OPEN, NO RESTRICTION	N/A	N/A	7 - Good	7 - Good	7 - Good	N - N/A	3/10/2022	3/10/2022	14285	DLC	2
Azalea	Y	41373	02 7301 0000 3148	148	North Shore Dr	Heinz Field Pedestrian Walkway	Other	C	Fair	125	9750	3	Steel	I beams	2001	OPEN, NO RESTRICTION	N/A	N/A	6 - Satisfactory	8 - Very Good	7 - Good	N - N/A	10/29/2021	10/29/2023	8818	AT&T, DUQUESNELIGHT	2

Appendix B

Inspection Report
Review Summary

CITY OF PITTSBURGH - BRIDGE INVENTORY AS OF 6/30/2022
Combined Bridge Review Summary

BRKEY	BMS Number	City Number	Bridge Name	Features Intersected	Analysis Review			Bridge inspection, Report, and Maintenance/Repair Item Review							Review of Bridge Posting and Clearance Signs		
					Does the weight limit posting in the field (from Inspection Report photos) match the Load Rating Summary in the Inspection Report? Y/N	Is an updated analysis recommended? Y/N	In general, are the latest findings in the inspection report reflected and appropriately included in the analysis? Y/N	Do the condition ratings reflect the comments/pictures/sketches in the report? Y/N	Do the Maintenance Priorities reflect the comments/pictures/ sketches in the report? Y/N	Are the Maintenance Priorities properly coded, critical or high, for Condition Ratings 3 or less? Y/N	Has a Plan of Action been developed for each critical or high priority maintenance item (See Pub 238 IP 6.2.4.1) Y/N	Has the Maintenance Priority been fixed in the appropriate time frame- 7 days for a Priority 0 or 6 months for Priority 1? Y/N	Were there any Maintenance Priorities that were missed or needed to be changed, with specific focus on 0's, 1's, and 2's that could turn into 1's in the next two years? Y/N	Is an immediate inspection recommended? Y/N	Is there a recommended bridge weight limit in the Inspection Report? Y/N	Are proper signs in place per PUB 238 including advance signage? Y/N	Are the vertical clearances in the Inspection Report based on field measurements? Y/N
2392	02 7301 0000 3001	1	Alexander Street	Saw Mill Run	N	Y	N	Y	Y	N/A	N/A	N/A	Y	N	N	N	N/A
54600	02 7301 0000 3031	3	Frankie Mae Pace Park (The Cap)	I-579	N/A	N	Y	Y	Y	N/A	N/A	N/A	N	N	N	N/A	Y
2394	02 7301 0000 3005	5	Charles Anderson Bridge (Blvd of the Allies)	CSX RR & Junction Hollow Trail	Y	Y	Y	Y	Y	N	Y	Unknown	Y	N	N	N	Y
2395	02-7301-0000-3006	6	Ansonia Pl	Saw Mill Run	N/A	N	N/A	Y	Y	Y	Y	N	N	N	N	Y	N/A
2396	02 7301 0000 3007	7	Bajo St (off Becks Run Rd)	Tributary to Beck's Run	N	Y	N	Y	N	N	Unknown	Unknown	N	N	N	N	NA
1230	02 7301 0000 3008	8	Baum Blvd	NS RR & PAT East Busway	N/A	N	Y	Y	Y	N/A	Y	N	N	N	N	N/A	Y
2397	02-7301-0000-3009	9	Bigelow Blvd Underpass	Below Bloomfield Bridge Ramp F	Y	N	Y	Y	Y	N/A	Y	N	N	--	--	N/A	Y
2398	02 7301 0000 3010	10	Bloomfield Bridge	NS RR & CSX RR & PAT East Busway	Y	N	Y	Y	Y	N/A	Y	N	N	N	N	N/A	Y
69499	02 7301 0000 3169	12	Broome St. Pedestrian Bridge	Streets Run	UNKNOWN	UNKNOWN	UNKNOWN	UNKNOWN	UNKNOWN	UNKNOWN	UNKNOWN	UNKNOWN	N	N	N	N/A	N/A
--	--	13	Mon Wharf Switchback Pedestrian Bridge	Hillside	UNKNOWN	UNKNOWN	UNKNOWN	UNKNOWN	UNKNOWN	UNKNOWN	UNKNOWN	UNKNOWN	N	Y	N	N/A	N/A
2399	02-7301-0000-3014	14	Calera Street #1	Streets Run	Y	N	Y	Y	Y	Y	Y	N	N	N	Y	N	N/A
49060	02 7301 0000 3015	15	Calera St #2	Tributary to Streets Run	N	Y	N	Y	N	N/A	N	N	N	N	N	N	N/A
53484	02 7301 0000 3152	16	Carnahan Rd (at Banks Ville Rd) (NEW #)	Tributary to Saw Mill Run	Y	N	Y	Y	Y	N	N/A	N/A	N	N	N	None Required	NA
2401	02 7301 0000 3018	18	Corliss St Tunnel	Below PAT West Busway & NS RR	N/A	N	Y	Y	Y	N/A	N/A	N/A	N	N	N	Y	Y
2472	02 7301 0000 9001	19	Centre Ave	NS RR & PAT East Busway	Y	N	Y	Y	Y	Y	Y	Y	N	N	N	N/A	Y

CITY OF PITTSBURGH - BRIDGE INVENTORY AS OF 6/30/2022
Combined Bridge Review Summary

BRKEY	BMS Number	City Number	Bridge Name	Features Intersected	Analysis Review			Bridge inspection, Report, and Maintenance/Repair Item Review							Review of Bridge Posting and Clearance Signs		
					Does the weight limit posting in the field (from Inspection Report photos) match the Load Rating Summary in the Inspection Report? Y/N	Is an updated analysis recommended? Y/N	In general, are the latest findings in the inspection report reflected and appropriately included in the analysis? Y/N	Do the condition ratings reflect the comments/pictures/sketches in the report? Y/N	Do the Maintenance Priorities reflect the comments/pictures/ sketches in the report? Y/N	Are the Maintenance Priorities properly coded, critical or high, for Condition Ratings 3 or less? Y/N	Has a Plan of Action been developed for each critical or high priority maintenance item (See Pub 238 IP 6.2.4.1) Y/N	Has the Maintenance Priority been fixed in the appropriate time frame- 7 days for a Priority 0 or 6 months for Priority 1? Y/N	Were there any Maintenance Priorities that were missed or needed to be changed, with specific focus on 0's, 1's, and 2's that could turn into 1's in the next two years? Y/N	Is an immediate inspection recommended? Y/N	Is there a recommended bridge weight limit in the Inspection Report? Y/N	Are proper signs in place per PUB 238 including advance signage? Y/N	Are the vertical clearances in the Inspection Report based on field measurements? Y/N
2402	02 7301 0000 3020	20	Chartiers Ave	PAT West Busway	N/A	N	Y	Y	Y	N/A	N/A	N/A	N	N	N	N/A	Y
2403	02 7301 0000 3021	21	West Carson St	Chartiers Creek	Y	Y	N	Y	Y	N/A	Y	Y	N	N	Y	Y	Y
2404	02-7301-0000-3022	22	Columbus Ave	NS RR	Y	N	Y	Y	Y	N/A	N/A	N/A	N	N	Y	N	Y
2405	02 7301 0000 3023	23	Crane Ave	Saw Mill Run	N/A	N	Y	Y	Y	N/A	N/A	N/A	N	N	N	N/A	N/A
2406	02 7301 0000 3024	24	Davis Ave Bridge	Woods Run Ave	N/A	N/A	N/A	N/A	N/A	N/A	N/A	N/A	N/A	N/A	N/A	N/A	N/A
69497	02 7301 0000 3167	25	Lake Elizabeth Pedestrian Bridge #1 (East)	Lake Elizabeth	--	--	--	--	--	--	--	--	--	--	--	--	--
69498	02 7301 0000 3168	26	Lake Elizabeth Pedestrian Bridge #2 (West)	Lake Elizabeth	N/A	Y	N/A	N/A	N/A	N/A	N/A	N/A	N/A	N/A	N/A	N	N/A
2407	02-7301-0000-3027	27	Eads St.	Tributary to Beck's Run	Y	N	Y	Y	Y	N/A	Y	N/A	N	N	N	N	--
2408	02 7301 0000 3028	28	Edgebrook Ave	Saw Mill Run	N/A	N	Y	Y	Y	N/A	N/A	N/A	N	N	N	Y	N/A
2409	02 7301 0000 3029	29	Elizabeth St	CSX RR & Gloster St	N/A	Y	N	Y	Y	N/A	Y	N	N	N	N	N/A	Y
49081	02 7301 0000 3030	30	Englewood Pedestrian Bridge (Englert St)	Saw Mill Run	N/A	N/A	N/A	Y	N	N/A	N/A	N/A	N	N	N	N/A	N/A
2470	02 7301 0000 3831	31	E Liberty Blvd (NB)	Pedestrian Walkway	Y	Y	Y	Y	Y	N	N/A	N/A	N	N	N	None Required	NA
2471	02 7301 0000 3931	31	E Liberty Blvd (SB)	Pedestrian Walkway	Y	N	Y	Y	N	N/A	N/A	N/A	Y	N	N	N/A	N/A
2410	02 7301 0000 3033	33	Fern Hollow Bridge (Forbes Ave) (New Bridge, Under Construction)	Nine Mile Run & Fern Hollow	N/A	N/A	N/A	N/A	N/A	N/A	N/A	N/A	N/A	N/A	N/A	N/A	N/A
2411	02 7301 0000 3034	34	Forbes Ave	CSX RR & Boundary St	Y	N	Y	Y	Y	N/A	N/A	N/A	N	N	N	N/A	Y

CITY OF PITTSBURGH - BRIDGE INVENTORY AS OF 6/30/2022
Combined Bridge Review Summary

BRKEY	BMS Number	City Number	Bridge Name	Features Intersected	Analysis Review			Bridge inspection, Report, and Maintenance/Repair Item Review							Review of Bridge Posting and Clearance Signs		
					Does the weight limit posting in the field (from Inspection Report photos) match the Load Rating Summary in the Inspection Report? Y/N	Is an updated analysis recommended? Y/N	In general, are the latest findings in the inspection report reflected and appropriately included in the analysis? Y/N	Do the condition ratings reflect the comments/pictures/sketches in the report? Y/N	Do the Maintenance Priorities reflect the comments/pictures/ sketches in the report? Y/N	Are the Maintenance Priorities properly coded, critical or high, for Condition Ratings 3 or less? Y/N	Has a Plan of Action been developed for each critical or high priority maintenance item (See Pub 238 IP 6.2.4.1) Y/N	Has the Maintenance Priority been fixed in the appropriate time frame- 7 days for a Priority 0 or 6 months for Priority 1? Y/N	Were there any Maintenance Priorities that were missed or needed to be changed, with specific focus on 0's, 1's, and 2's that could turn into 1's in the next two years? Y/N	Is an immediate inspection recommended? Y/N	Is there a recommended bridge weight limit in the Inspection Report? Y/N	Are proper signs in place per PUB 238 including advance signage? Y/N	Are the vertical clearances in the Inspection Report based on field measurements? Y/N
2412	02 7301 0000 3035	35	Fort Pitt Blvd (Commonwealth to Wood)	Mon Wharf Parking Lot	Y	N	Y	Y	Y	N	NA	NA	N	N	N	None Required	NA
2413	02 7301 0000 3036	36	Franum St (Ensign Ave)	Saw Mill Run	N/A	N	Y	Y	Y	N/A	N/A	N/A	N	N	N	N/A	N/A
69496	02 7301 0000 3166	37	Fritz St Pedestrian Bridge at Brosville	Knoxville Incline Overlook Park	N/A	Y	N/A	N/A	N/A	N/A	N/A	N/A	Y	Y	N/A	N/A	N/A
2414	02 7301 0000 3038	38	Corley St (Ganges Way)	Streets Run	Y	N	N	Y	Y	N	N/A	N/A	N	N	N	N	NA
54496	02-7301-0000-3932	39	Greenfield Bridge	I-376 Parkway East	Y	N	UNKNOWN	Y	Y	N/A	N/A	N/A	N	N	N	N/A	Y
2416	02 7301 0000 3040	40	Herron Avenue	NS RR, CSX RR, & PAT East Busway	N	Y	Y	Y	N	N/A	Unknown	N	Y	N	N	N/A	Y
2417	02 7301 0000 3041	41	30th St Bridge (Herrs Island)	Allegheny River Back Channel	N/A	N	Y	Y	Y	N/A	Y	N	N	N	N	N/A	N/A
2418	02 7301 0000 3043	43	Hill Road (One Wild Place)	Zoo Walkway	Y	N	Y	Y	Y	N/A	N/A	N/A	N	N	N	N/A	Y
--	--	45	Herr's Island Railroad (Pedestrian) Bridge	Allegheny River Back Channel	--	--	--	--	--	--	--	--	--	Y	--	--	--
--	--	46	Millvale Trail Pedestrian Bridge	Allegheny River Back Channel	--	--	--	--	--	--	--	--	--	Y	--	--	--
2419	02 7301 0000 3047	47	Larimer Ave	Washington Blvd (Rt 8)	Y	N	Y	Y	Y	N/A	Y	N	N	N	Y	Y	Y
2420	02 7301 0000 3048	48	Lincoln Ave	Washington Blvd (Rt 8)	N/A	Y	Y	Y	Y	N/A	N/A	N/A	N	N	N	N/A	Y
49084	02 7301 0000 3049	49	Lowe Street Pedestrian Bridge	Saw Mill Run	N/A	N	N/A	Y	Y	N/A	N/A	N/A	Y	N	N	N/A	N/A
2421	02 7301 0000 3050	50	Lowrie St	Rialto St	Y	N	Y	Y	Y	N/A	N/A	N/A	N	N	N	Y	Y
2422	02 7301 0000 3051	51	Maple Ave	N Charles St	Y	N	Y	Y	N	N	N	N	Y	Y	N	Y	Y

CITY OF PITTSBURGH - BRIDGE INVENTORY AS OF 6/30/2022
Combined Bridge Review Summary

BRKEY	BMS Number	City Number	Bridge Name	Features Intersected	Analysis Review			Bridge inspection, Report, and Maintenance/Repair Item Review							Review of Bridge Posting and Clearance Signs		
					Does the weight limit posting in the field (from Inspection Report photos) match the Load Rating Summary in the Inspection Report? Y/N	Is an updated analysis recommended? Y/N	In general, are the latest findings in the inspection report reflected and appropriately included in the analysis? Y/N	Do the condition ratings reflect the comments/pictures/sketches in the report? Y/N	Do the Maintenance Priorities reflect the comments/pictures/ sketches in the report? Y/N	Are the Maintenance Priorities properly coded, critical or high, for Condition Ratings 3 or less? Y/N	Has a Plan of Action been developed for each critical or high priority maintenance item (See Pub 238 IP 6.2.4.1) Y/N	Has the Maintenance Priority been fixed in the appropriate time frame- 7 days for a Priority 0 or 6 months for Priority 1? Y/N	Were there any Maintenance Priorities that were missed or needed to be changed, with specific focus on 0's, 1's, and 2's that could turn into 1's in the next two years? Y/N	Is an immediate inspection recommended? Y/N	Is there a recommended bridge weight limit in the Inspection Report? Y/N	Are proper signs in place per PUB 238 including advance signage? Y/N	Are the vertical clearances in the Inspection Report based on field measurements? Y/N
2423	02 7301 0000 3052	52	Robert McAfee Bridge (California Ave)	McClure Ave & Eckert St	Y	N	Y	Y	Y	N/A	N	N	N	N	N	N/A	Y
2424	02 7301 0000 3053	53	McArdle Rdwy	E Sycamore St	N/A	N	Y	Y	Y	N/A	N/A	N/A	N/A	N	N	N/A	Y
2425	02 7301 0000 3054	54	McArdle Rdwy	Hillside	N/A	Y	N	Y	Y	N/A	N/A	N/A	N	N	N	N/A	N/A
69470	02 7301 0000 3162	55	Frick Lane Parking Lot Road	Fern Hollow Creek	N/A	Y	N/A	Y	Y	N/A	N/A	N/A	Y	N	N	Y	N/A
69495	02 7301 0000 3165	56	Nine Mile Run Trail Pedestrian Bridge	Nine Mile Run	--	--	--	--	--	--	--	--	--	--	--	--	--
2426	02 7301 0000 3057	57	Meadow St	Negley Run Blvd	N/A	Y	N	Y	Y	N/A	Y	Y	N	N	N	N/A	N/A
49085	02 7301 0000 3058	58	Melanchton St Pedestrian Bridge	CSX RR	N/A	N/A	N/A	Y	Y	N/A	N/A	N/A	N	N	N	N/A	N/A
49086	02 7301 0000 3059	59	Midwood Avenue Pedestrian Bridge	Saw Mill Run	N/A	N/A	N/A	Y	N	N/A	N	N/A	Y	N	N	N/A	N/A
2427	02 7301 0000 3060	60	Mission Street (East)	Gomer St & Greeley St	Y	N	Y	Y	Y	N/A	N/A	N/A	N	N	Y	N	Y
2428	02-7301-0000-3061	61	Mission St (West)	S 21st Street	N	N/A	N/A	Y	Y	N/A	N/A	N/A	N	N	N	Y	Y
--	--	63	Fine Way (Mordale St) (Collapsed, to be Barricaded)	Saw Mill Run	--	--	--	--	--	--	--	--	--	--	--	--	--
2429	02-7301-0000-3064	64	McArdle Rdway Viaduct #1	NS RR	Y	N	Y	Y	Y	N/A	N/A	N/A	N	N	N	N/A	Y
2430	02 7301 0000 3065	65	McArdle Rdwy Viaduct #2	Hillside	N/A	N	Y	Y	Y	N/A	N/A	N/A	N	N	N	N/A	N/A
2431	02 7301 0000 3066	66	Murray Ave	Beechwood Blvd	Y	N	Y	Y	Y	N/A	N/A	N/A	N	N	N	N/A	Y
2432	02 7301 0000 3067	67	W North Ave & Brighton Rd	NS RR	Y	Y	Y	Y	Y	N/A	Y	N	N	N	Y	Y	N/A

CITY OF PITTSBURGH - BRIDGE INVENTORY AS OF 6/30/2022
Combined Bridge Review Summary

BRKEY	BMS Number	City Number	Bridge Name	Features Intersected	Analysis Review			Bridge inspection, Report, and Maintenance/Repair Item Review							Review of Bridge Posting and Clearance Signs		
					Does the weight limit posting in the field (from Inspection Report photos) match the Load Rating Summary in the Inspection Report? Y/N	Is an updated analysis recommended? Y/N	In general, are the latest findings in the inspection report reflected and appropriately included in the analysis? Y/N	Do the condition ratings reflect the comments/pictures/sketches in the report? Y/N	Do the Maintenance Priorities reflect the comments/pictures/ sketches in the report? Y/N	Are the Maintenance Priorities properly coded, critical or high, for Condition Ratings 3 or less? Y/N	Has a Plan of Action been developed for each critical or high priority maintenance item (See Pub 238 IP 6.2.4.1) Y/N	Has the Maintenance Priority been fixed in the appropriate time frame- 7 days for a Priority 0 or 6 months for Priority 1? Y/N	Were there any Maintenance Priorities that were missed or needed to be changed, with specific focus on 0's, 1's, and 2's that could turn into 1's in the next two years? Y/N	Is an immediate inspection recommended? Y/N	Is there a recommended bridge weight limit in the Inspection Report? Y/N	Are proper signs in place per PUB 238 including advance signage? Y/N	Are the vertical clearances in the Inspection Report based on field measurements? Y/N
49087	02 7301 0000 3068	68	N Lang Ave Pedestrian Bridge	NS RR & PAT East Busway	N/A	N/A	N/A	Y	Y	N/A	N/A	N/A	N	N	N	N/A	Y
49088	02 7301 0000 3071	71	Overbrook Blvd Pedestrian Bridge	Saw Mill Run	N/A	N/A	N/A	Y	Y	N/A	N/A	N/A	N	N	N	N/A	N/A
2473	02-7301-0000-9002	72	Penn Ave	NS RR & PAT East Busway	Y	N	Y	Y	Y	N/A	N	N	N	N	N	N/A	Y
49066	02-7301-0000-3073	73	Pensdale St. Bridge No. 1	Bell Run	N	Y	N/A	N	Y	N/A	N/A	N/A	N	N	N	N/A	N/A
49067	02 7301 0000 3074	74	Pennsdale Avenue #2	Bell Run	N	Y	N/A	Y	N	N/A	N/A	N/A	Y	N	N	N	N/A
2433	02 7301 0000 3075	75	Pennsylvania Ave	NS RR	Y	Y	Y	Y	Y	N/A	N/A	N/A	N	N	N	N/A	N/A
744	02 7301 0000 3933	77	Parking Lot Bridge at Woodruff St	Saw Mill Run Blvd	N/A	N	Y	Y	Y	Y	Y	N	N	N	N	N/A	Y
2435	02 7301 0000 3078	78	Radcliffe St	GW RR	Y	Y	N	Y	Y	N	N/A	N/A	N	N	N	None Required	NA
49089	02 7301 0000 3080	80	Reservoir Drive	Highland Park Walking Trail	No Analysis	Y	No Analysis	--	--	--	--	--	--	--	--	None Required	NA
2436	02 7301 0000 3081	81	Ridge Ave	NS RR	N/A	N/A	N/A	N/A	N/A	N/A	N/A	N/A	N/A	N/A	N/A	N/A	N/A
2437	02 7301 0000 3082	82	River Ave Viaduct	Three Rivers Heritage Trail	Y	Y	Y	Y	Y	N/A	N	N	N	Y	N	N/A	N/A
2438	02 7301 0000 3084	84	Schenley Dr	CSX RR & Boundary St	N/A	Y	N	N	N	N/A	N/A	N/A	N	N	N	N/A	N
2439	02 7301 0000 3085	85	Panther Hollow Road	Panther Hollow Lake	Unknown	Y	N/A	Y	N	N/A	N/A	N/A	Y	Y	N	N/A	N
2440	02 7301 0000 3086	86	Panther Hollow Overpass	Overlook Dr	N/A	N	Y	Y	Y	N/A	Y	Y	N	N	N	Y	Y
2441	02 7301 0000 3087	87	Schenley Park Panther Hollow Trail #1	Schenley Park Stream	Y	N	Y	Y	Y	N	N/A	N/A	N	N	N	None Required	NA

CITY OF PITTSBURGH - BRIDGE INVENTORY AS OF 6/30/2022
Combined Bridge Review Summary

BRKEY	BMS Number	City Number	Bridge Name	Features Intersected	Analysis Review			Bridge inspection, Report, and Maintenance/Repair Item Review							Review of Bridge Posting and Clearance Signs		
					Does the weight limit posting in the field (from Inspection Report photos) match the Load Rating Summary in the Inspection Report? Y/N	Is an updated analysis recommended? Y/N	In general, are the latest findings in the inspection report reflected and appropriately included in the analysis? Y/N	Do the condition ratings reflect the comments/pictures/sketches in the report? Y/N	Do the Maintenance Priorities reflect the comments/pictures/ sketches in the report? Y/N	Are the Maintenance Priorities properly coded, critical or high, for Condition Ratings 3 or less? Y/N	Has a Plan of Action been developed for each critical or high priority maintenance item (See Pub 238 IP 6.2.4.1) Y/N	Has the Maintenance Priority been fixed in the appropriate time frame- 7 days for a Priority 0 or 6 months for Priority 1? Y/N	Were there any Maintenance Priorities that were missed or needed to be changed, with specific focus on 0's, 1's, and 2's that could turn into 1's in the next two years? Y/N	Is an immediate inspection recommended? Y/N	Is there a recommended bridge weight limit in the Inspection Report? Y/N	Are proper signs in place per PUB 238 including advance signage? Y/N	Are the vertical clearances in the Inspection Report based on field measurements? Y/N
2442	02 7301 0000 3088	88	Schenley Park Panther Hollow Trail #2	Schenley Park Stream	N/A	N	N/A	Y	Y	N/A	N/A	N/A	N	N	N	N/A	N/A
2443	02 7301 0000 3089	89	Schenley Park Panther Hollow Trail #3	Schenley Park Stream	N/A	Y	Y	Y	Y	N/A	N/A	N/A	N	N	N	N/A	N/A
2444	02 7301 0000 3090	90	Schenley Park Panther Hollow Trail #4	Schenley Park Stream	Y	Y	N	Y	Y	N/A	N/A	N/A	N	N	N	N/A	N/A
2445	02-7301-0000-3091	91	Schenley Park Locust/Bridle Trail #1	Schenley Park Stream	N	N	Y	Y	Y	N/A	N/A	N/A	N	N	N	N/A	N/A
2446	02-7301-0000-3092	92	Schenley Park Locust/Bridle Trail #2	Schenley Park Stream	N	N	Y	Y	Y	N/A	N/A	N/A	N	N	N	N/A	N/A
2447	02-7301-0000-3093	93	Second Ave	Nine Mile Run	Y	N	Y	Y	Y	N/A	N/A	N/A	N	N	Y	N	N/A
54694	02 7301 0000 3094	94	McFarren Street	Nine Mile Run	Y	N	Y	Y	N/A	N/A	N/A	N/A	N	N	N	N/A	N/A
2448	02 7301 0000 3095	95	Shadeland Avenue	Woods Run Ave, Leckey Ave, & Courtright St	Y	N	Y	Y	Y	N/A	N	N	N	N	N	N/A	Y
2449	02 7301 0000 3097	97	Shaler Street	Saw Mill Run	N	N	Y	Y	Y	N/A	Y	Y	Y	N	N	N/A	N/A
2450	02-7301-0000-3098	98	S Aiken Ave	NS RR & PAT East Busway	UNKNOWN	UNKNOWN	UNKNOWN	Y	Y	N/A	Y	UNKNOWN	N	N	N	N/A	N
49090	02 7301 0000 3099	99	S Graham St Pedestrian Bridge	NS RR & PAT East Busway	N/A	N/A	N/A	Y	N	N/A	N/A	N/A	N	N	N/A	N/A	Y
48206	02 7301 0000 3100	100	S Highland Ave (NEW #)	NS RR & PAT East Busway & Ellsworth Ave	N/A	N	Y	Y	Y	N/A	N/A	N/A	N	N	N	N/A	Y
2452	02-7301-0000-3101	101	S Millvale Ave	NS RR & PAT East Busway & Gross St.	Y	N	0	Y	Y	N/A	N/A	N/A	N	N	N	N/A	N
2453	02 7301 0000 3102	102	S Negley Ave	NS RR & PAT East Busway	N/A	Y	N	N	N	N/A	N/A	N/A	N	N	N	N/A	Y
2474	02 7301 0000 9010	103	Seventh Ave	PAT LRT Spur	Y	Y	N	Y	N	N/A	N	Unknown	N	N	N	N/A	N/A

CITY OF PITTSBURGH - BRIDGE INVENTORY AS OF 6/30/2022
Combined Bridge Review Summary

BRKEY	BMS Number	City Number	Bridge Name	Features Intersected	Analysis Review			Bridge inspection, Report, and Maintenance/Repair Item Review							Review of Bridge Posting and Clearance Signs		
					Does the weight limit posting in the field (from Inspection Report photos) match the Load Rating Summary in the Inspection Report? Y/N	Is an updated analysis recommended? Y/N	In general, are the latest findings in the inspection report reflected and appropriately included in the analysis? Y/N	Do the condition ratings reflect the comments/pictures/sketches in the report? Y/N	Do the Maintenance Priorities reflect the comments/pictures/ sketches in the report? Y/N	Are the Maintenance Priorities properly coded, critical or high, for Condition Ratings 3 or less? Y/N	Has a Plan of Action been developed for each critical or high priority maintenance item (See Pub 238 IP 6.2.4.1) Y/N	Has the Maintenance Priority been fixed in the appropriate time frame- 7 days for a Priority 0 or 6 months for Priority 1? Y/N	Were there any Maintenance Priorities that were missed or needed to be changed, with specific focus on 0's, 1's, and 2's that could turn into 1's in the next two years? Y/N	Is an immediate inspection recommended? Y/N	Is there a recommended bridge weight limit in the Inspection Report? Y/N	Are proper signs in place per PUB 238 including advance signage? Y/N	Are the vertical clearances in the Inspection Report based on field measurements? Y/N
2454	02 7301 0000 3104	104	S 12th St	NS RR	N/A	N	Y	Y	Y	N/A	N/A	N/A	N	N	N	N/A	N/A
--	--	105	Spahr St (East Liberty) Pedestrian Bridge	NS RR & PAT East Busway	--	--	--	--	--	--	--	--	--	Y	--	--	--
2455	02 7301 0000 3106	106	Stanwix St	I-376 WB (Parkway East)	N/A	N	Y	Y	N	N/A	N/A	N/A	N	N	N	N/A	Y
2456	02 7301 0000 3109	109	Swindell Bridge	I-279 & East St	Y	Y	Y	Y	Y	Y	Unknown	Unknown	Y	Y	N	None Required	Y
2457	02 7301 0000 3110	110	Swinburne Bridge (Frazier St)	CSX RR & Saline St	Y	N	Y	Y	Y	Y	Y	Y	N	N	Y	Y	N
2458	02 7301 0000 3112	112	Brighton Heights Blvd (Termon Ave)	Verner Ave	Y	Y	N	Y	Y	N	Unknown	Unknown	N	N	N	Y	Y
2459	02-7301-0000-3113	113	Timberland Ave.	Saw Mill Run	Y	N	N/A	Y	Y	Y	Y	N	N	N	N	Y	N/A
2460	02 7301 0000 3114	114	Troy Hill Rd	Hillside	Y	Y	N	Y	Y	N/A	N/A	N/A	N	N	N	N/A	N/A
2461	02 7301 0000 3115	115	28th St	NS RR & PAT East Busway & Sassafras Way	Y	N	Y	Y	Y	N/A	N/A	N/A	N	N	Y	Y	Y
49098	02 7301 0000 3116	116	Calera St to Baldwin Rd Pedestrian Bridge	Streets Run	No Analysis	Y	No Analysis	Y	Y	N	N/A	N/A	N	N	N	None Required	NA
55802	02 7301 0000 3119	118	West Ohio St Bridge (NEW #)	NS RR	N/A	N	Y	Y	Y	N/A	N/A	N/A	N	N	N	N/A	N/A
69326	02 7301 0000 3156	119	Wilksboro Ave Pedestrian Bridge (CLOSED)	Tributary to Jack's Run	N/A	N/A	N/A	Y	Y	Y	Y	N/A	N	N	N	Y	--
2463	02 7301 0000 3120	120	Wood St	I-376 WB (Parkway East)	N/A	N	Y	Y	N	N/A	N/A	N/A	N	N	N	N/A	Y
2464	02 7301 0000 3121	121	Market St	I-376 WB (Parkway East) & Fort Pitt Blvd	N/A	N	Y	Y	Y	N/A	N/A	N/A	N	N	N	N/A	Y
2465	02 7301 0000 3122	122	Commercial St	Nine Mile Run	N/A	Y	Y	N	N	N/A	N/A	N/A	N	N	N	N	N/A

CITY OF PITTSBURGH - BRIDGE INVENTORY AS OF 6/30/2022
Combined Bridge Review Summary

BRKEY	BMS Number	City Number	Bridge Name	Features Intersected	Analysis Review			Bridge inspection, Report, and Maintenance/Repair Item Review							Review of Bridge Posting and Clearance Signs		
					Does the weight limit posting in the field (from Inspection Report photos) match the Load Rating Summary in the Inspection Report? Y/N	Is an updated analysis recommended? Y/N	In general, are the latest findings in the inspection report reflected and appropriately included in the analysis? Y/N	Do the condition ratings reflect the comments/pictures/sketches in the report? Y/N	Do the Maintenance Priorities reflect the comments/pictures/ sketches in the report? Y/N	Are the Maintenance Priorities properly coded, critical or high, for Condition Ratings 3 or less? Y/N	Has a Plan of Action been developed for each critical or high priority maintenance item (See Pub 238 IP 6.2.4.1) Y/N	Has the Maintenance Priority been fixed in the appropriate time frame- 7 days for a Priority 0 or 6 months for Priority 1? Y/N	Were there any Maintenance Priorities that were missed or needed to be changed, with specific focus on 0's, 1's, and 2's that could turn into 1's in the next two years? Y/N	Is an immediate inspection recommended? Y/N	Is there a recommended bridge weight limit in the Inspection Report? Y/N	Are proper signs in place per PUB 238 including advance signage? Y/N	Are the vertical clearances in the Inspection Report based on field measurements? Y/N
49095	02 7301 0000 3140	140	S 10th Street Pedestrian Bridge	NS RR	N/A	N/A	N/A	Y	Y	N/A	N/A	N/A	N	N	N	N/A	N
49096	02 7301 0000 3141	141	S 15th St Pedestrian Bridge	NS RR	N/A	N/A	N/A	Y	Y	N/A	N/A	N/A	N	N	N	N/A	N
47751	02 7301 0000 3143	143	10th St Bypass off of Fort Duquesne Bridge Ramp (Fancourt St)	10th St Bypass	N/A	N	Y	Y	Y	N/A	N/A	N/A	N	N	N	N/A	Y
2469	02 7301 0000 3144	144	Hillburn St Pedestrian Bridge	Irwins Run	Y	N	Y	Y	Y	N	N/A	N/A	N	N	N	None Required	NA
40785	02 7301 0000 3145	145	Hot Metal Bridge	Mon River & RR Spur	Y	N	Y	Y	Y	N/A	N	Unknown	Y	Y	N	N/A	N/A
--	--	146	Hot Metal Pedestrian Bridge #1	Mon River & RR Spur	--	--	--	--	--	--	--	--	--	Y	--	--	--
40788	02 7301 0000 3147	147	Hot Metal St	CSX RR	N/A	N	Y	Y	Y	N/A	N/A	N/A	N	N	N	N/A	N/A
41373	02-7301-0000-3148	148	North Shore Drive	Heinz Field Pedestrian Walkway	Y	N	Y	Y	Y	0	N/A	N/A	N	N	N	N/A	N
42334	02 7301 0000 3149	149	Fort Duquesne Blvd	10th St Pedestrian Ramp	N/A	N	Y	Y	Y	N/A	N/A	N/A	N	N	N	N/A	Y
42018	02-7301-0000-3150	150	Fort Pitt Blvd (Wood to Smithfield)	Mon Wharf Flood Walls	Y	N	UNKNOWN	Y	Y	N/A	N/A	N/A	N	N	N	N/A	N/A
49097	02 7301 0000 3151	151	Charles J Lieberth Pedestrian Bridge	PA 28	N/A	N/A	N/A	Y	Y	N/A	N/A	N/A	N	Y	N	N/A	N
69313	02 7301 0000 3153	152	Hot Metal Ped Bridge #2	Second Ave	N/A	Y	Y	Y	N	N/A	N/A	N/A	N	N	N	N/A	Y
69447	02 7301 0000 3160	153	S 27th Street (Will be Inspected by Jan. 2023)	CSX RR	--	--	--	--	--	--	--	--	--	Y	--	--	--
69448	02 7301 0000 3161	154	S 28th Street (Will be Inspected by Jan. 2023)	CSX RR	--	--	--	--	--	--	--	--	--	Y	--	--	--
--	--	156	Fort Duquesne Pedestrian Bridge	Allegheny River	--	--	--	--	--	--	--	--	--	Y	--	--	--

CITY OF PITTSBURGH - BRIDGE INVENTORY AS OF 6/30/2022
Combined Bridge Review Summary

BRKEY	BMS Number	City Number	Bridge Name	Features Intersected	Analysis Review			Bridge inspection, Report, and Maintenance/Repair Item Review							Review of Bridge Posting and Clearance Signs		
					Does the weight limit posting in the field (from Inspection Report photos) match the Load Rating Summary in the Inspection Report? Y/N	Is an updated analysis recommended? Y/N	In general, are the latest findings in the inspection report reflected and appropriately included in the analysis? Y/N	Do the condition ratings reflect the comments/pictures/sketches in the report? Y/N	Do the Maintenance Priorities reflect the comments/pictures/ sketches in the report? Y/N	Are the Maintenance Priorities properly coded, critical or high, for Condition Ratings 3 or less? Y/N	Has a Plan of Action been developed for each critical or high priority maintenance item (See Pub 238 IP 6.2.4.1) Y/N	Has the Maintenance Priority been fixed in the appropriate time frame- 7 days for a Priority 0 or 6 months for Priority 1? Y/N	Were there any Maintenance Priorities that were missed or needed to be changed, with specific focus on 0's, 1's, and 2's that could turn into 1's in the next two years? Y/N	Is an immediate inspection recommended? Y/N	Is there a recommended bridge weight limit in the Inspection Report? Y/N	Are proper signs in place per PUB 238 including advance signage? Y/N	Are the vertical clearances in the Inspection Report based on field measurements? Y/N
--	--	160	Eliza Furnace Trail over 2nd Ave	2nd Ave	N/A	Y	Y	Y	N	N/A	N/A	N/A	N	Y	N	N/A	Y
69314	02 7301 0000 3154	161	Eliza Furnace Trail over Brady St	Brady St	N/A	Y	Y	Y	Y	N/A	N/A	N/A	N	N	N/A	N/A	Y
69334	02 7301 0000 3159	162	Eliza Furnace Trail over Maurice St	Maurice St	No Analysis	Y	No Analysis	Y	Y	N	Unknown	Unknown	N	N	N	None Required	NA
69325	02 7301 0000 3155	163	Eliza Furnace Trail over Bates St	Bates St	N/A	Y	N	Y	N	N/A	N/A	N/A	N	N	N	N/A	Y
69333	02 7301 0000 3158	164	Eliza Furnace Trail over Swinburne Street #1	Swinburne Street	N/A	N/A	N/A	Y	Y	N/A	N/A	N/A	N/A	N	N	Y	Y
69332	02 7301 0000 3157	165	Eliza Furnace Trail over Swinburne St #2	Swinburne St	N/A	Y	N/A	Y	Y	N/A	N/A	N/A	N	N	N	N/A	Y
1312	02 0885 0280 1934	166	Eliza Furnace Trail over Greenfield Ave (Parking Lot)	Greenfield Ave	N/A	Y	Y	Y	N	N/A	N	N	N	N	N	N	Y
69500	02 7301 0000 3170	--	Frick Park Falls Ravine Trail Bridge	Fern Hollow Creek	N/A	N/A	N/A	Y	Y	N/A	N/A	N/A	N	N	N	N/A	N/A
--	02 7301 0000 9103	??	Fallowfield Station LRT Viaduct	Dagmar Ave & Cape May Ave & Kenberma Ave	N/A	N	N/A	Y	N	N/A	N/A	N/A	Y	N	N	N/A	N/A
2740	02 8002 0300 0208	??	Crosstown Blvd Pedestrian Bridge	Centre Ave Ramp	N/A	N/A	N/A	--	--	--	--	--	--	--	--	--	--
69493	02 7301 0000 3163	??	Schenley Park Hollow Run Trail Bridge #2	Phipps Run	N/A	N/A	N/A	N	Y	N/A	N/A	N/A	Y	N	N	N/A	N/A
69494	02 7301 0000 3164	??	Schenley Park Hollow Run Trail Bridge #3	Panther Hollow Run	N/A	N/A	N/A	Y	Y	N/A	N/A	N/A	N	N	N	N/A	N/A

Note: See individual Consultant review tabs for notes.

# Yes =	51	48	72	117	100	8	23	8	16	18	9	18	53
# No =	11	62	17	7	23	18	11	19	108	115	114	16	11

Appendix C

Drone Flight Schedule

City of Pittsburgh Comprehensive Bridge Asset Management Program
 Report to the Mayor Honorable Ed Gainey October 2022

Appendix C: Drone Flight Schedule

Date	Bridge			
	BRKEY	BMS Number	Bridge Name	Features Intersected
Sept. 20 th , 2022	2448	02 7301 0000 3095	Shadeland Avenue	Woods Run Ave, Leckey Ave, & Courtright St
Sept. 20 th , 2022	2417	02 7301 0000 2417	Herr's Island Bridge (30th Street Bridge)	Allegheny River Back Channel
Sept. 21 st , 2022	2398	02 7301 0000 3010	Bloomfield Bridge	NS RR & CSX RR & PAT East Busway
Oct. 3 rd , 2022	2456	02 7301 0000 3109	Swindell Bridge	I-279 & East St
Oct. 4 th , 2022	2426	02 7301 0000 3057	Meadow Street	Negley Run Boulevard
Oct. 6 th , 2022	2457	02 7301 0000 3110	Swinburne Bridge (Frazier St)	CSX RR & Saline St
Oct. 7 th , 2022	2424	02 7301 0000 3053	McArdle Roadway	Sycamore Street
Oct. 7 th , 2022	2412	02 7301 0000 3035	Fort Pitt Blvd (Commonwealth to Wood)	Mon Wharf Parking Lot
Oct. 8 th , 2022	40785	02 7301 0000 3145	Hot Metal Street	Mon River & Private Railroad
Oct. 8 th , 2022	2427	02 7301 0000 3060	Mission Street (East)	Gomer St & Greeley St
Oct. 8 th , 2022	2428	02-7301-0000-3061	Mission St (West)	S 21st Street
Oct. 10 th , 2022	2423	02 7301 0000 3052	Robert McAfee Bridge (California Ave)	McClure Ave & Eckert St
Oct. 11 th , 2022	2419	02 7301 0000 3047	Larimer Avenue	Washington Boulevard
Oct. 12 th , 2022	2411	02 7301 0000 3034	Forbes Ave	CSX RR & Boundary St
Oct. 12 th , 2022	2439	02 7301 0000 3085	Panther Hollow Road	Panther Hollow Lake
Oct. 12 th , 2022	2472	02 7301 0000 9001	Centre Ave	NS RR & PAT East Busway

Appendix D

Sample Drone Photos



Sample Photo 1 – Bridge Pier, front view.



Sample Photo 2 – Bridge Pier, side view.

Appendix E

New Bridge Inspection
Recommendations

City of Pittsburgh Bridge Asset Management
 New Bridge Inspection Recommendations
 Sorted by City Bridge Number

Vehicular Bridge
Pedestrian Bridge

BRKEY	BMS Number	City Number	Bridge Name	Features Intersected	Anticipated Inspection Date
--	--	13	Mon Wharf Switchback Pedestrian Bridge	Hillside	Drone inspection 11/4/2022, new inspection by January 2023.
69496	02 7301 0000 3166	37	Fritz St Pedestrian Bridge at Brosville	Knoxville Incline Overlook Park	New inspection anticipated Fall 2023. Load capacity check in progress.
--	--	45	Herr's Island Railroad (Pedestrian) Bridge	Allegheny River Back Channel	Done inspection November 2022, new inspection by December 2022
--	--	46	Millvale Trail Pedestrian Bridge	Allegheny River Back Channel	Done inspection 10/31/2022, new inspection 11/15/2022
2422	02 7301 0000 3051	51	Maple Ave	N Charles St	Unknown at this time.
2437	02 7301 0000 3082	82	River Ave Viaduct	Three Rivers Heritage Trail	Unknown at this time.
2439	02 7301 0000 3085	85	Panther Hollow Road	Panther Hollow Lake	Unknown at this time.
--	--	105	Spahr St (East Liberty) Pedestrian Bridge	NS RR & PAT East Busway	Done inspection November 2022, new inspection by January 2023
2456	02 7301 0000 3109	109	Swindell Bridge	I-279 & East St	Drone inspection 11/16/2022
49092	02 7301 0000 3135	135	Howard St Pedestrian Bridge	I-279	New inspection by January 2023.
1060	02 7301 0000 3136	136	Milroy Street	I-279	Unknown at this time.
40785	02 7301 0000 3145	145	Hot Metal Street	Mon River & Private Railroad	Unknown at this time.
--	--	146	Hot Metal Pedestrian Bridge #1	Mon River & RR Spur	Done inspection November 2022, new inspection starting December 2022, to be complete end of January 2023 (due to railroad right of entry)
49097	02 7301 0000 3151	151	Charles J Lieberth Pedestrian Bridge	PA 28	Done inspection 11/1/2022, new inspection 11/12/2022
69447	02 7301 0000 3160	153	S 27th Street	CSX RR	by January 2023
69448	02 7301 0000 3161	154	S 28th Street	CSX RR	by January 2023
--	--	156	Fort Duquesne Pedestrian Bridge	Allegheny River	Done inspection November 2022, new inspection by 12/23/2022
--	--	160	Eliza Furnace Trail	2nd Ave	New inspection by January 2023

Appendix F

Priority Photo Examples

1. Typical example photos of critical and high priority hazards to pedestrians:

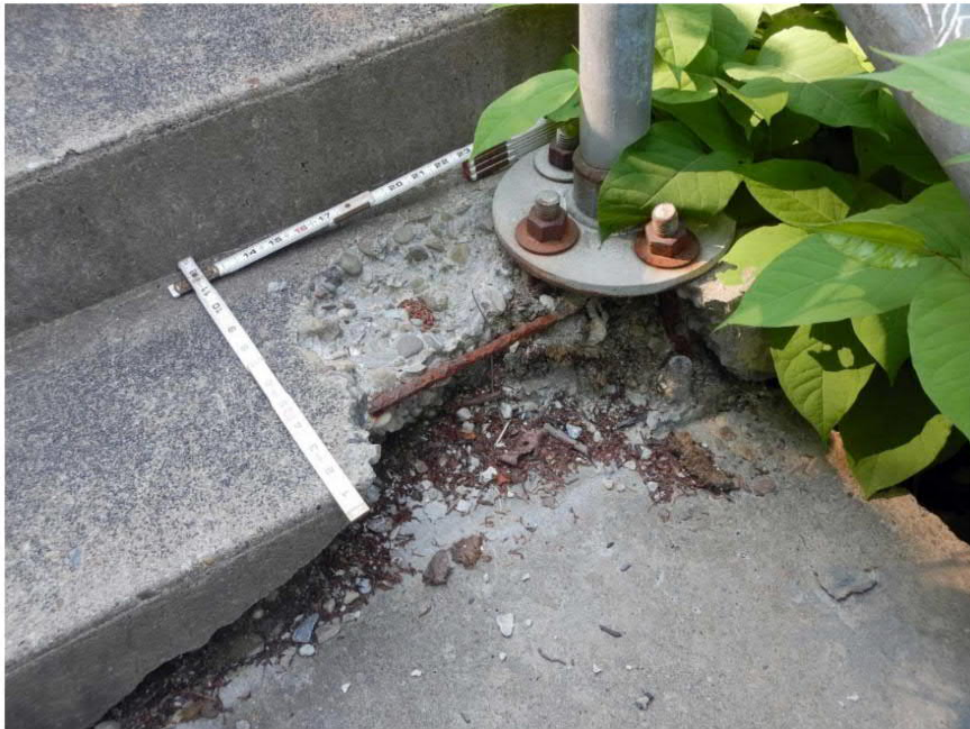


Photo 1a – Spalling of a pedestrian stairway with an exposed reinforcement bar poses a tripping and snagging hazard for pedestrians.



Photo 1b – A large spall on the walking surface of a sidewalk with exposed reinforcement bars poses a tripping hazard to pedestrians.



Photo 1c – A missing handhole cover on a light pole poses an electrical hazard to pedestrians.

2. Typical example photos of critical and high priority areas of advanced deterioration:



Photo 2a – Severe spalling along the bottom of a culvert barrel wall with exposed reinforcement reduces the load carrying capacity of the structure.



Photo 2b – Severe spalling of a pier column with exposed reinforcement reduces the load carrying capacity of the structure.



Photo 2c – Severe spalling of an abutment with exposed reinforcement reduces the load carrying capacity of the structure and causes loss of bearing support for the superstructure members.



Photo 2d – Loss of bearing area of superstructure members affects the ability of loads to transfer to the substructure.



Photo 2e – Serious section loss of primary load carrying members reduces the load carrying capacity of the structure.



Photo 2f – Holes through a floorbeam caused by serious corrosion and section loss reduces the load carrying capacity of the structure.



Photo 2g – Impact damage causing distortion to a primary load carrying member potentially affects the load carrying capacity of the structure.



Photo 2h – Delaminated concrete above a roadway has the potential to fall onto live vehicular traffic.



Photo 2i – Spalling in the top surface of a concrete deck with exposed reinforcement causes rough riding conditions and the potential for impaled tires which is a hazard to vehicular traffic.

3. Typical example photos of critical and high priority deck joint deterioration:



Photo 3a – Deck joint which has lost the expansion material allows water and dirt to get to the superstructure and bearings below, which causes accelerated deterioration.



Photo 3b – A failed deck joint has caused excessive dirt buildup and moisture at the beam seat area causing accelerated corrosion and deterioration of the superstructure and bearings.

4. Typical example photos of critical and high priority legal signage deficiencies:



Photo 4a – Load posting sign blocked by vegetation prevents overloaded vehicles from seeing that this is the posted bridge, which could result in damage or failure of the structure when a vehicle over the posted load limit crosses the structure.



Photo 4b – The “BRIDGE” placard above the load posting signs is missing, making it unclear that the load posting signs are for the structure.

5. Typical example photos of deteriorated pins:



Photo 5a – Rusted and corroded pins and pin nuts.



Photo 5b – Loose pin nut.



Photo 5c – Heavily corroded pin with some pitting and section loss.