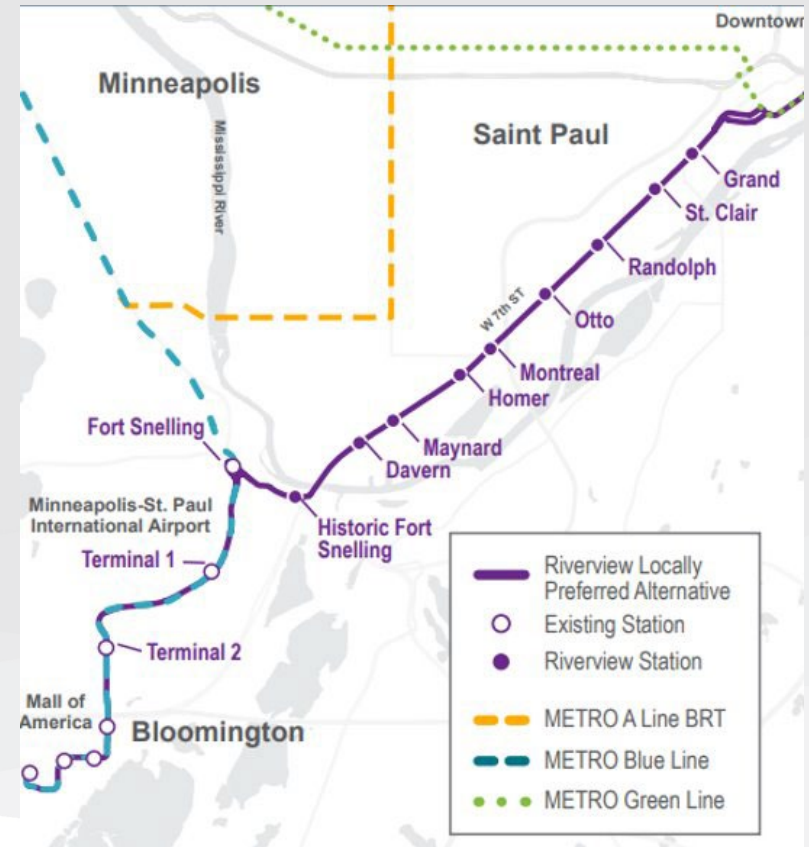




# **CAPITOLRIVER DISTRICT COUNCIL PUBLIC REALM COMMITTEE UPDATE**

# High-Level Status Overview

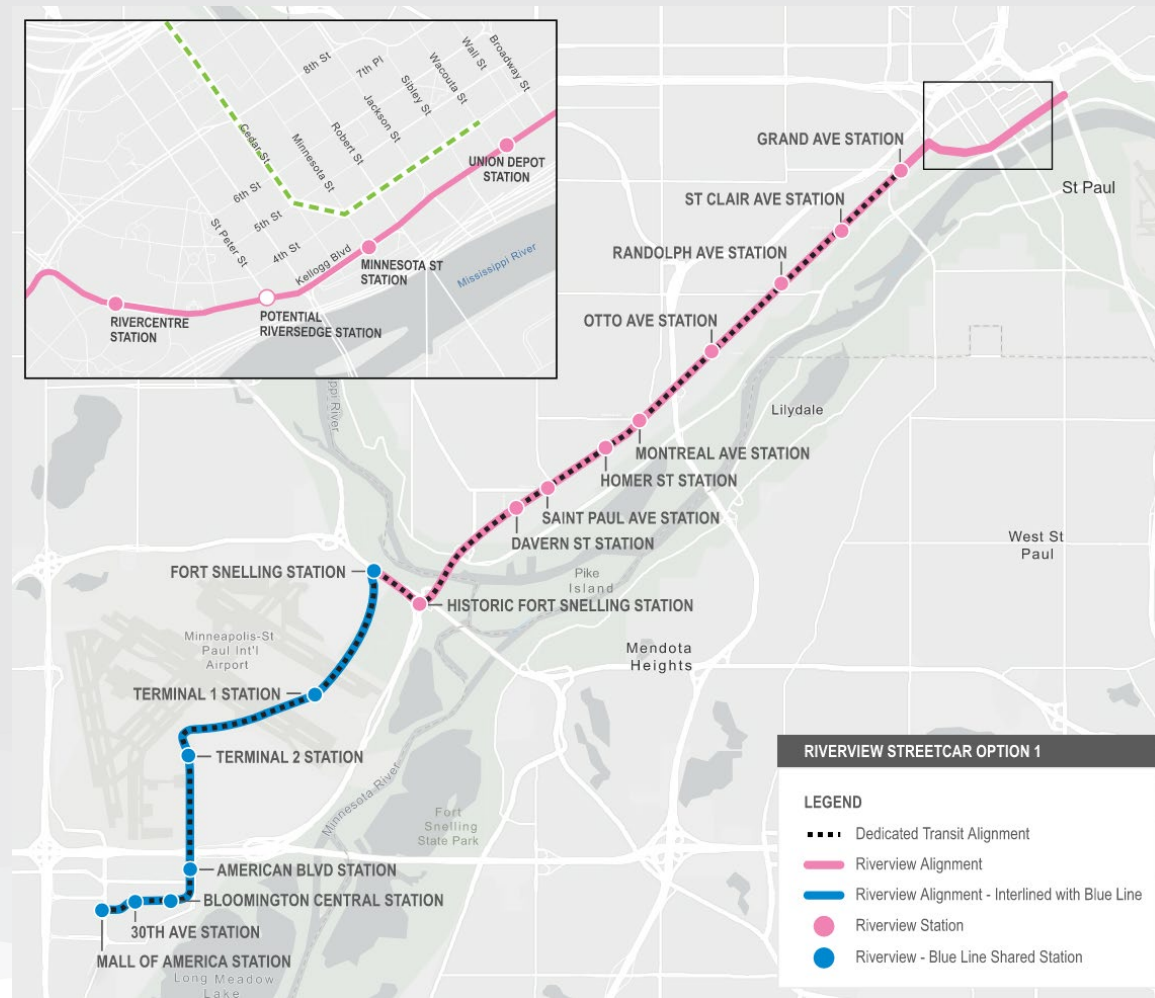
- Report results of Issue Resolution Team (IRT) process and agency conversations.
- Results were vetted through technical teams and policy makers.
- Two streetcar options, one bus option.



Starting point:  
Locally Preferred Alternative (LPA)

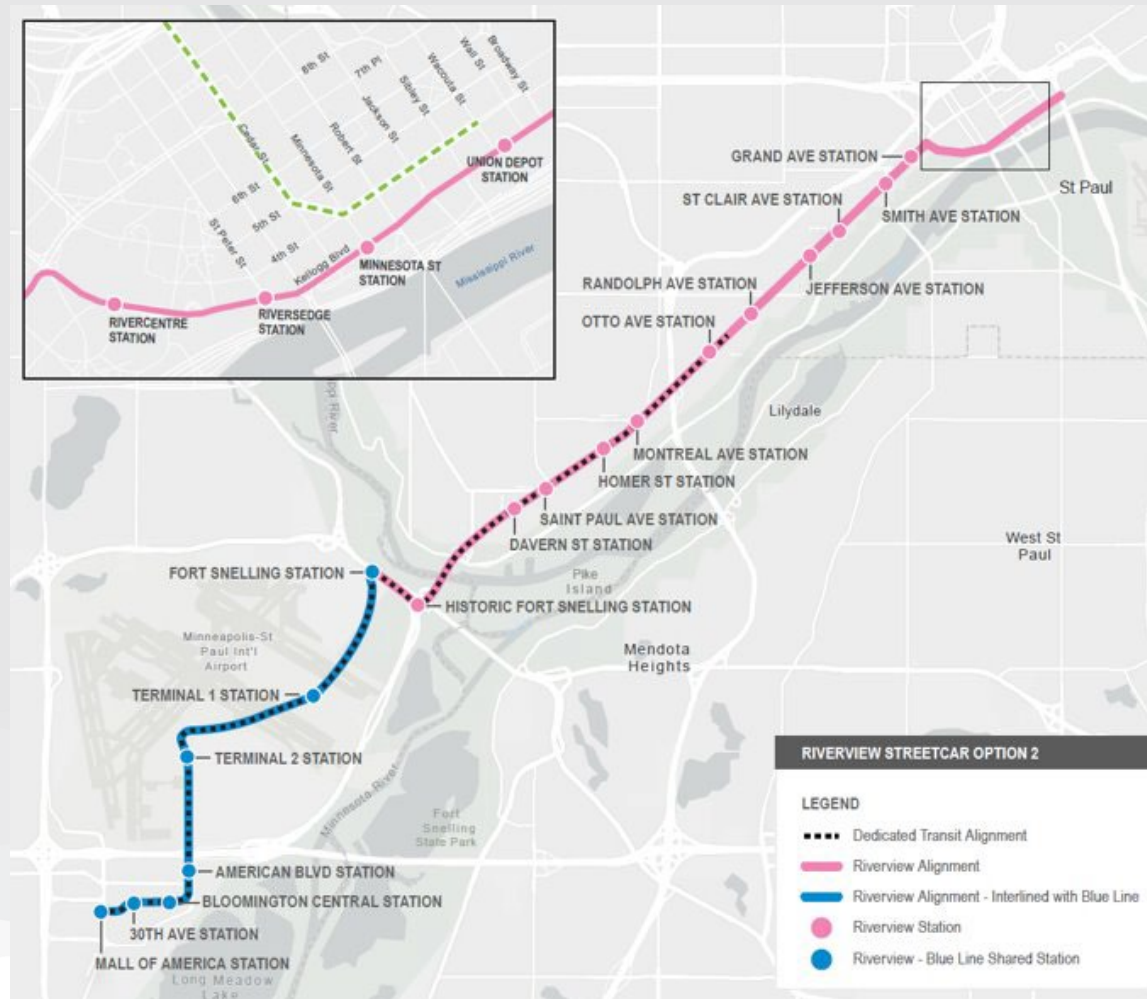
# Streetcar Option 1

- 20 stations.
- Dedicated transit lanes from MOA Station to Grand Avenue Station.
- Shared lanes from Grand Avenue Station to Union Depot Station.



# Streetcar Option 2

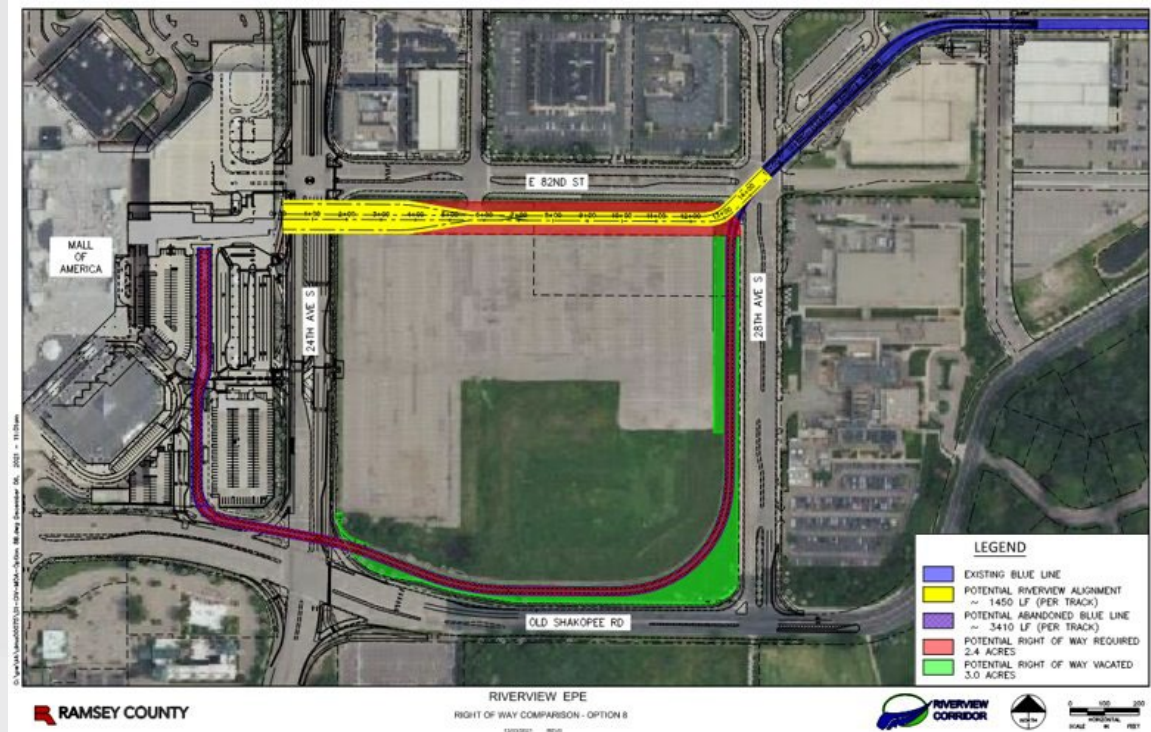
- 22 Stations.
- Dedicated transit lanes from MOA Station to Otto Avenue Station.
- Shared lanes Otto Avenue to Union Depot Station.



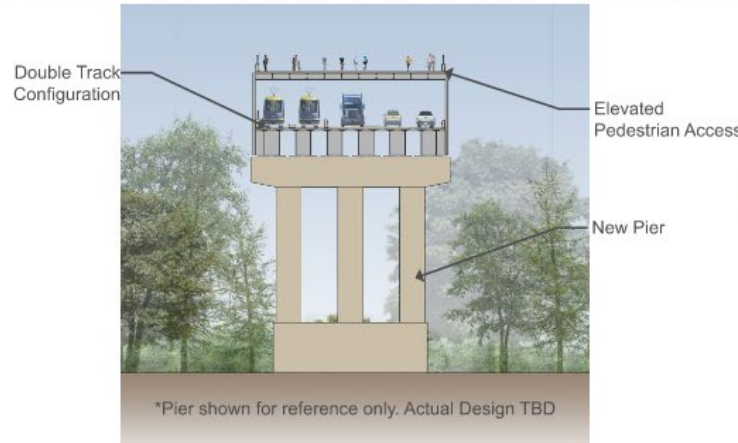
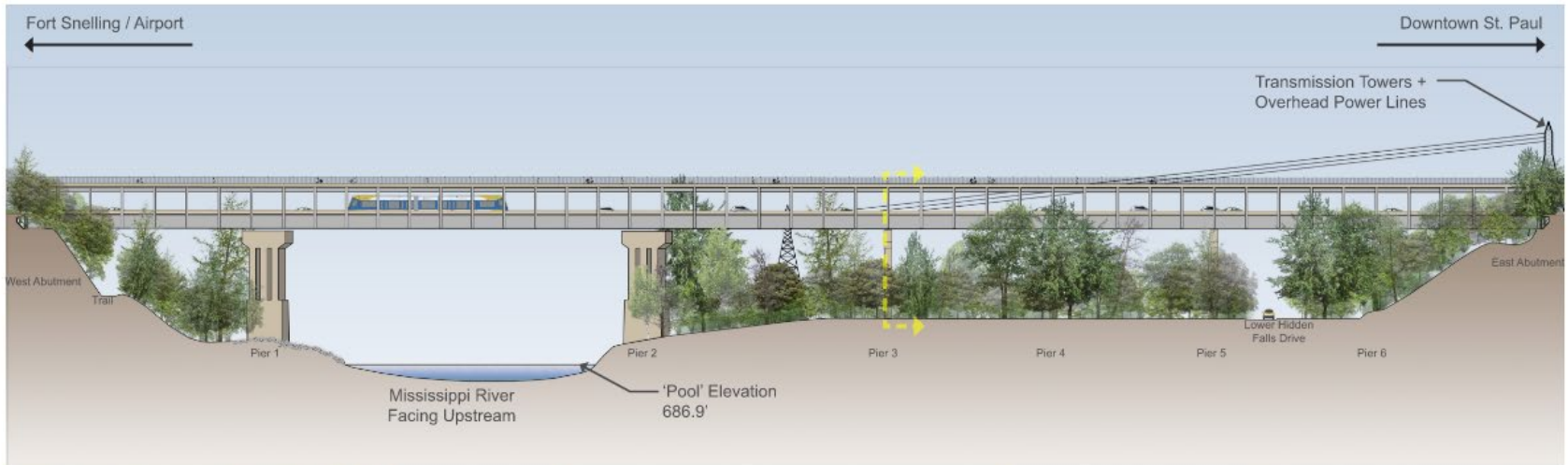


# End of Line Station

- Shared Riverview/Blue Line station at 82nd Street.
- Removal of existing Blue Line track along 28th Avenue and Old Shakopee Road.



# Highway 5 Bridge Concept



DRAFT - WORK IN PROCESS

## MISSISSIPPI RIVER BRIDGE CROSSING

CONCEPT 4 - DOUBLE DECK WITH CONTINUOUS STEEL BOX GIRDER

SEPTEMBER 26, 2022

RAMSEY COUNTY

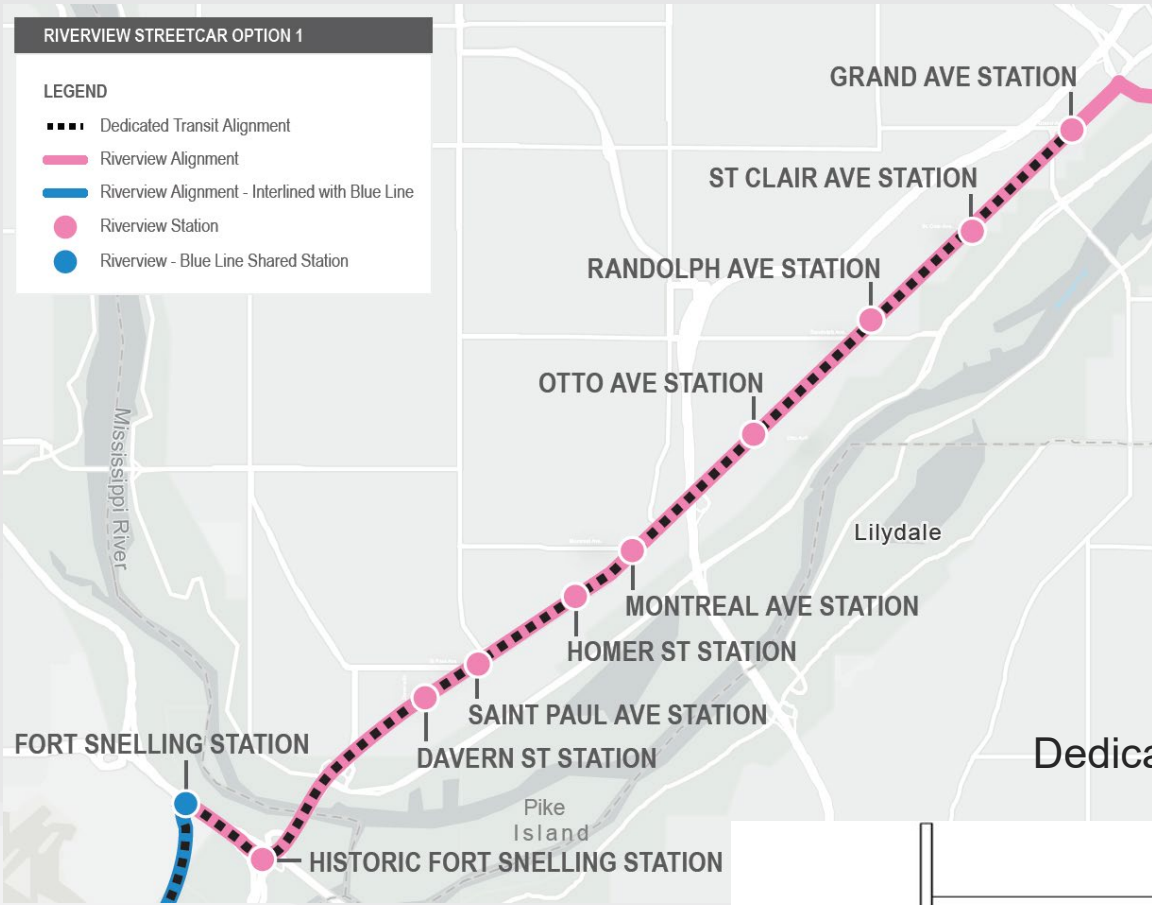


# Streetcar Option 1: Dedicated Lanes all of West 7th

## RIVERVIEW STREETCAR OPTION 1

### LEGEND

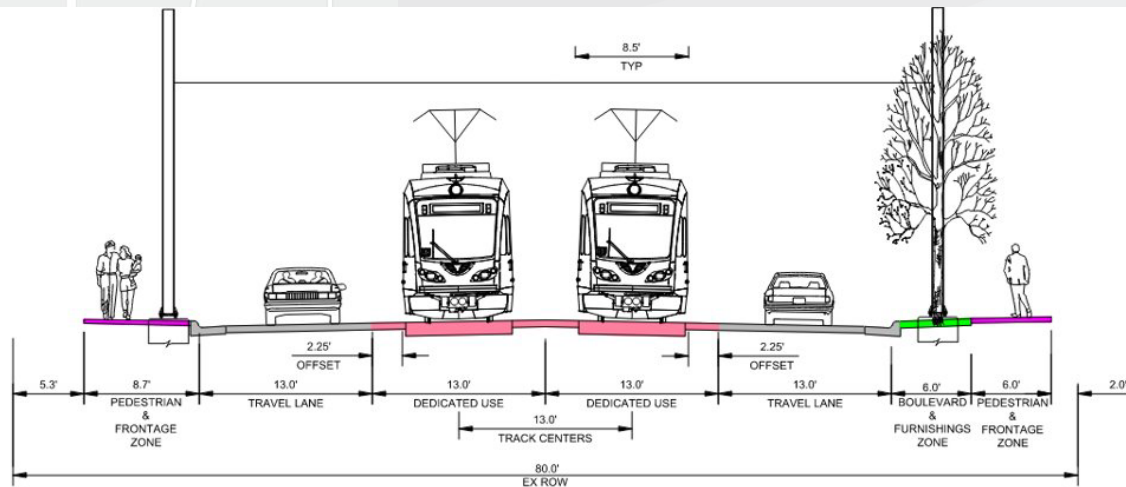
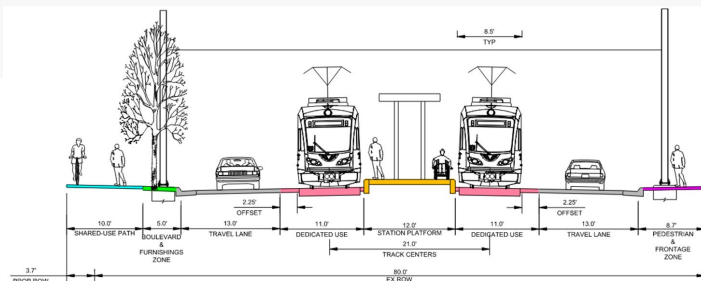
- Dedicated Transit Alignment
- Riverview Alignment
- Riverview Alignment - Interlined with Blue Line
- Riverview Station
- Riverview - Blue Line Shared Station



- Dedicated MOA to Grand Avenue.
- Shared lanes Grand Avenue to Union Depot.
- Center-running alignment.

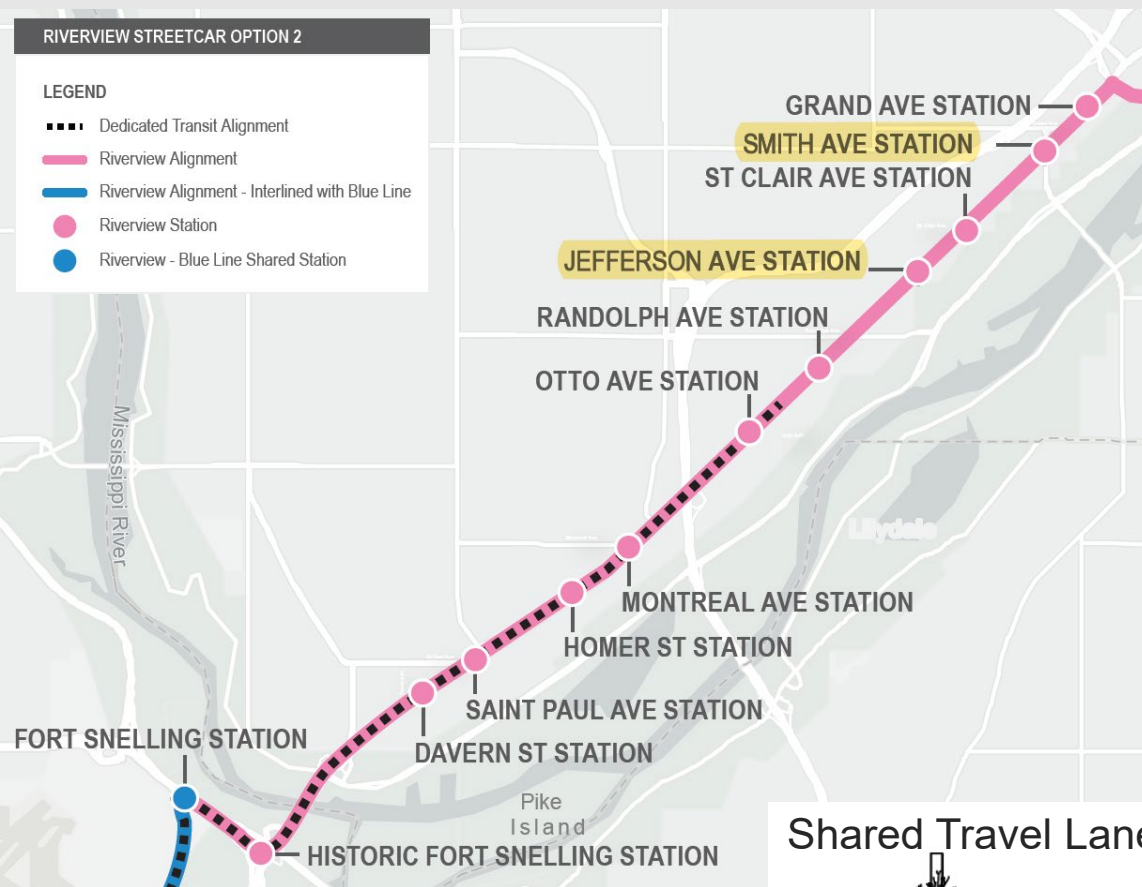
## Dedicated Travel Lanes – Center Running

## Dedicated Lanes at Station



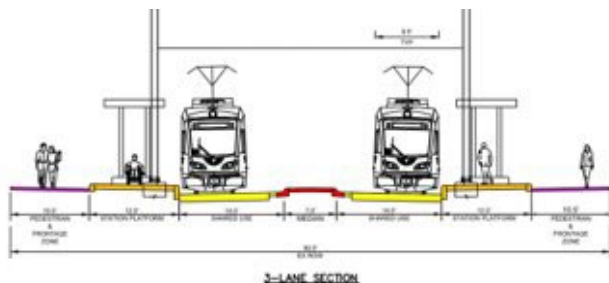


# Streetcar Option 2: Dedicated and Shared Lanes on West 7th

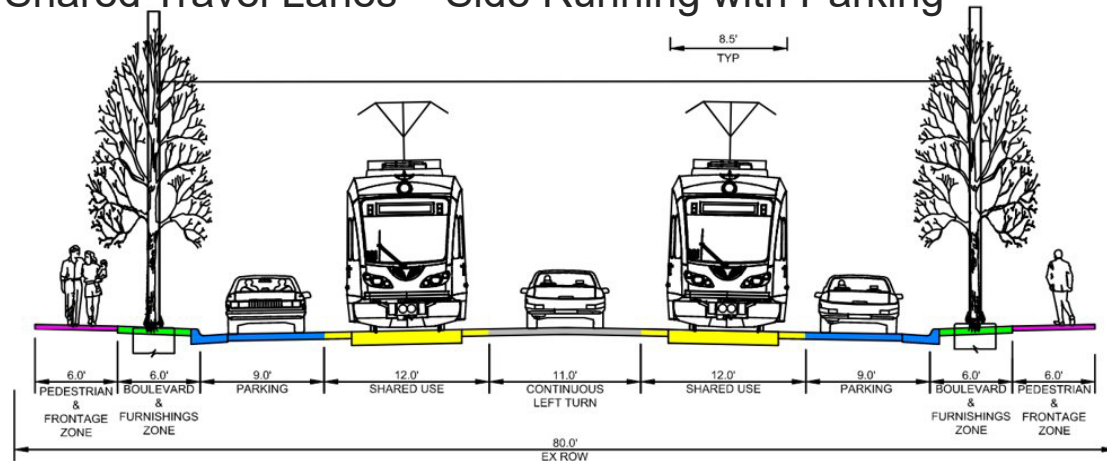


- Dedicated lanes MOA to Victoria Street.
- Shared lanes Victoria Street to Union Depot.
- Side-running sections.
- Additional stations at Jefferson and Smith.

Shared Lanes at Station



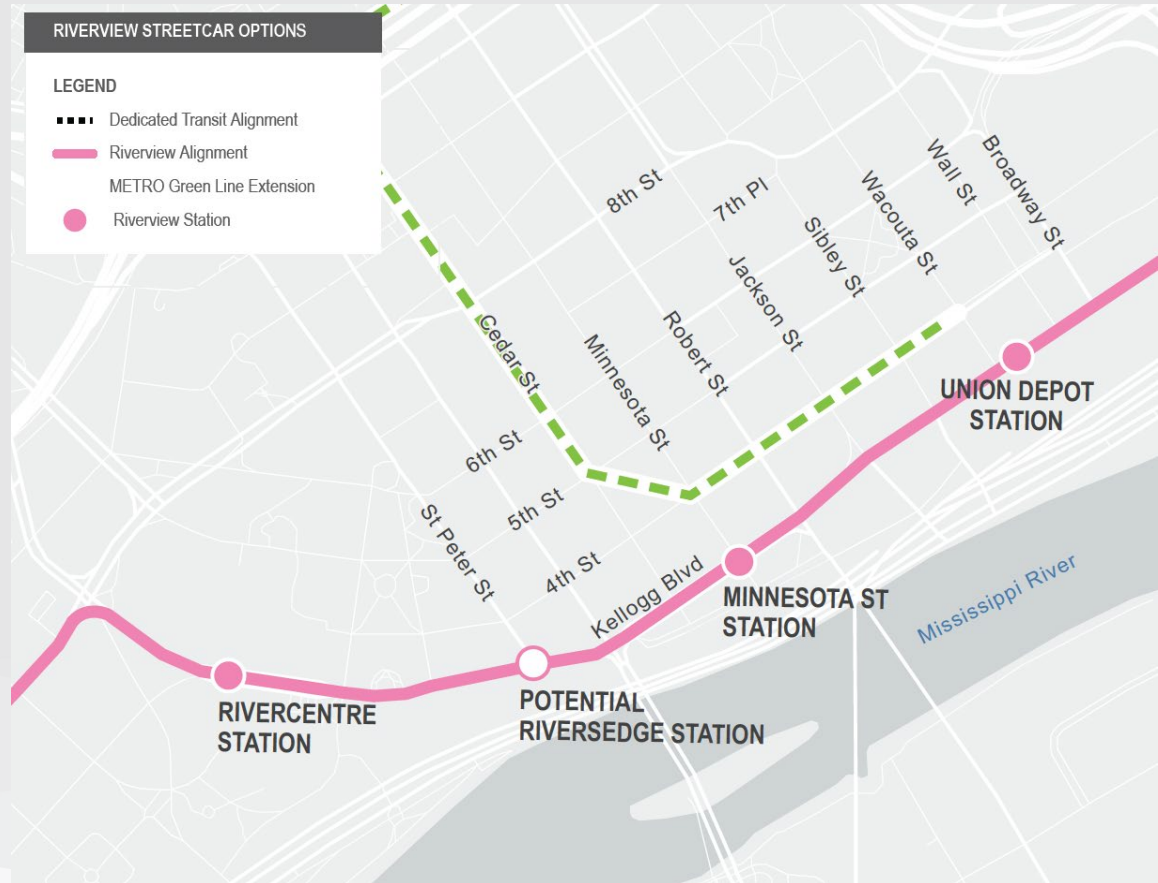
Shared Travel Lanes – Side Running with Parking





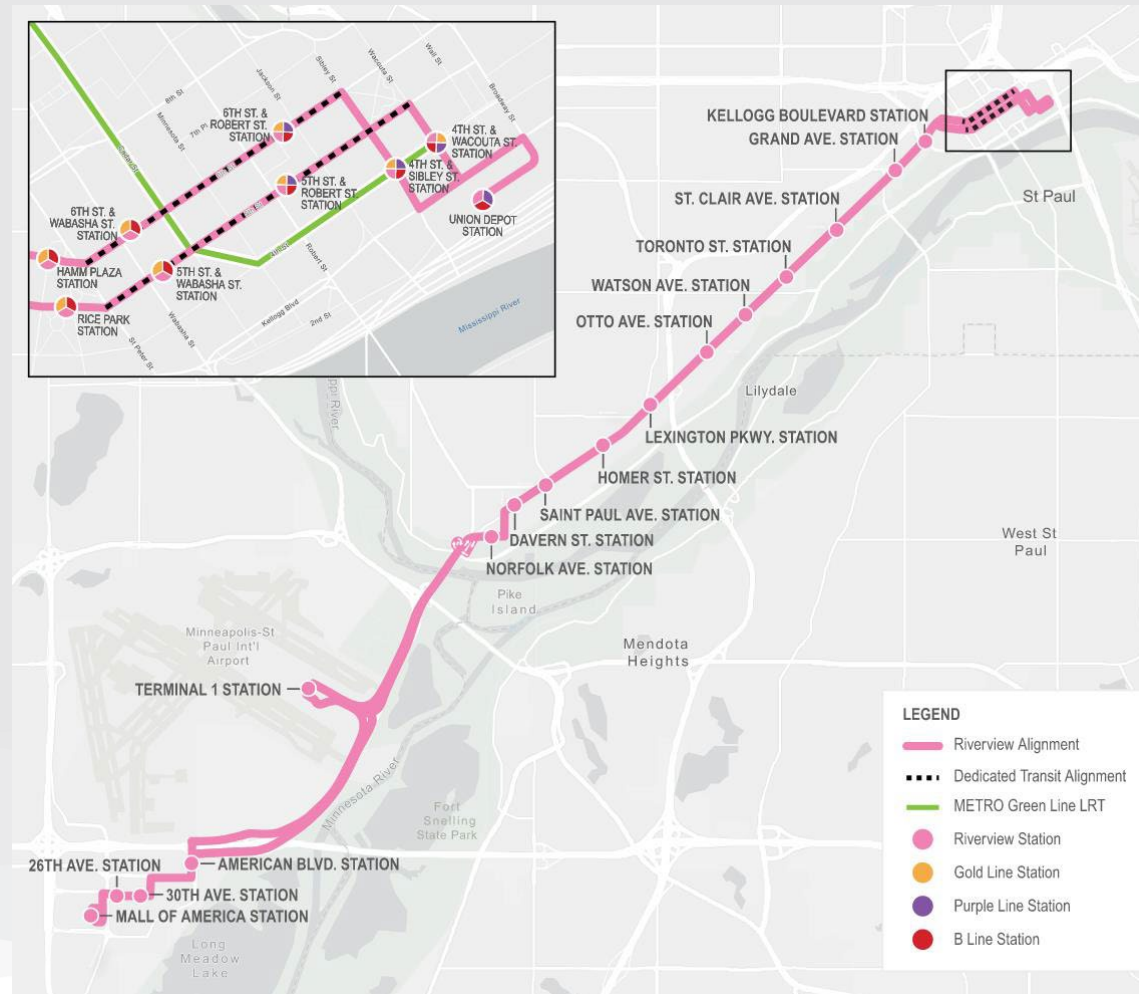
# Streetcar Alignment: Downtown St. Paul

- Kellogg Boulevard alignment recommended by IRT.
  - Serves areas of potential redevelopment.
  - More direct route.
  - Business feedback.



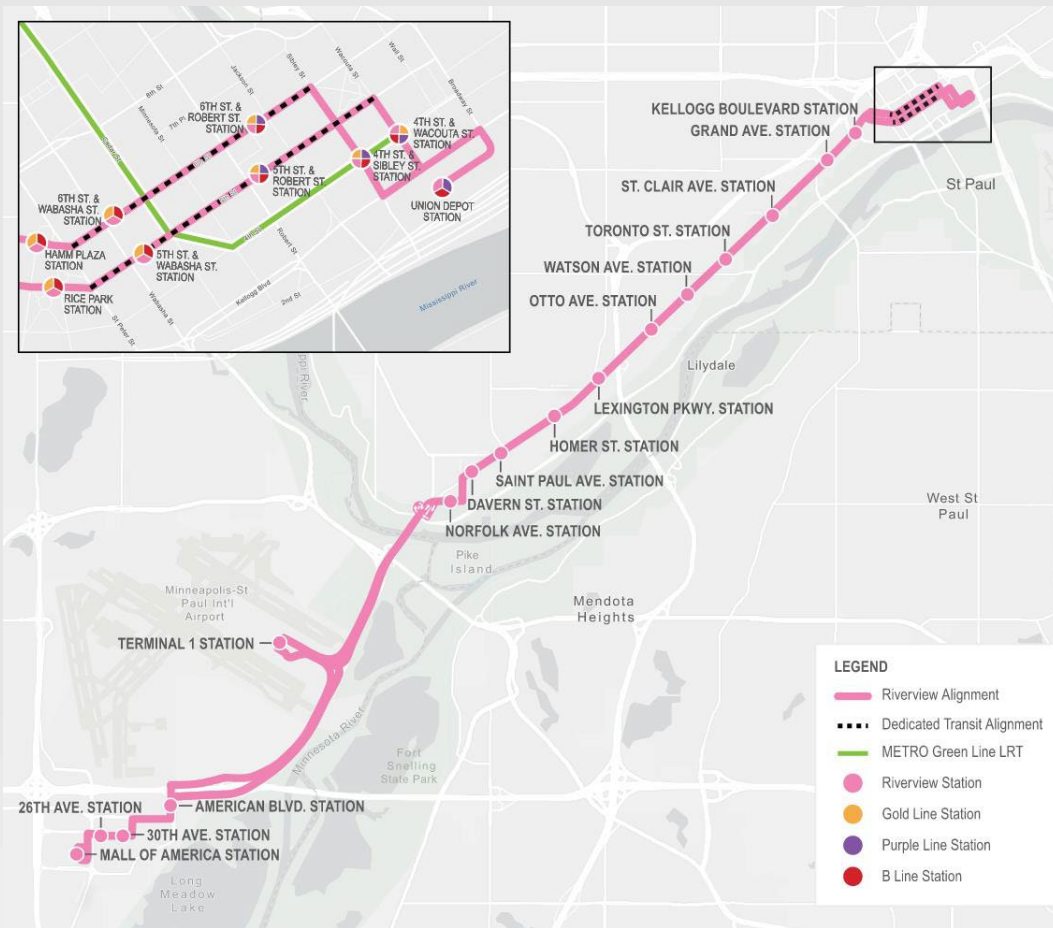
# Arterial Bus Rapid Transit Option

- 16 stations MOA to Kellogg Boulevard.
- Buses share lanes with traffic.
- 9 downtown platforms.
- Uses Gold Line stations downtown.



# Arterial BRT Option Assumptions

- No river bridge improvements; no new pedestrian/bike connections.
- No stations at Historic Fort Snelling or MSP Terminal 2.
- Use existing Mall of America station.



## Next Steps

- **January 31, 2024** – Present Streetcar and ABRT options to Community Advisory Committee and Policy Advisory Committee.
- **Spring/Summer 2024** – Public engagement.
- **Summer/Fall 2024** – PAC action on next steps.