



Coalition for the Capital Crescent Trail

Montgomery County

Purple Line / Capital Crescent Trail Update

Christina Contreras, Strategic Projects Implementation Manager

christina.contreras@montgomerycountymd.gov



Purple Line Update for CCCT

Contract Update

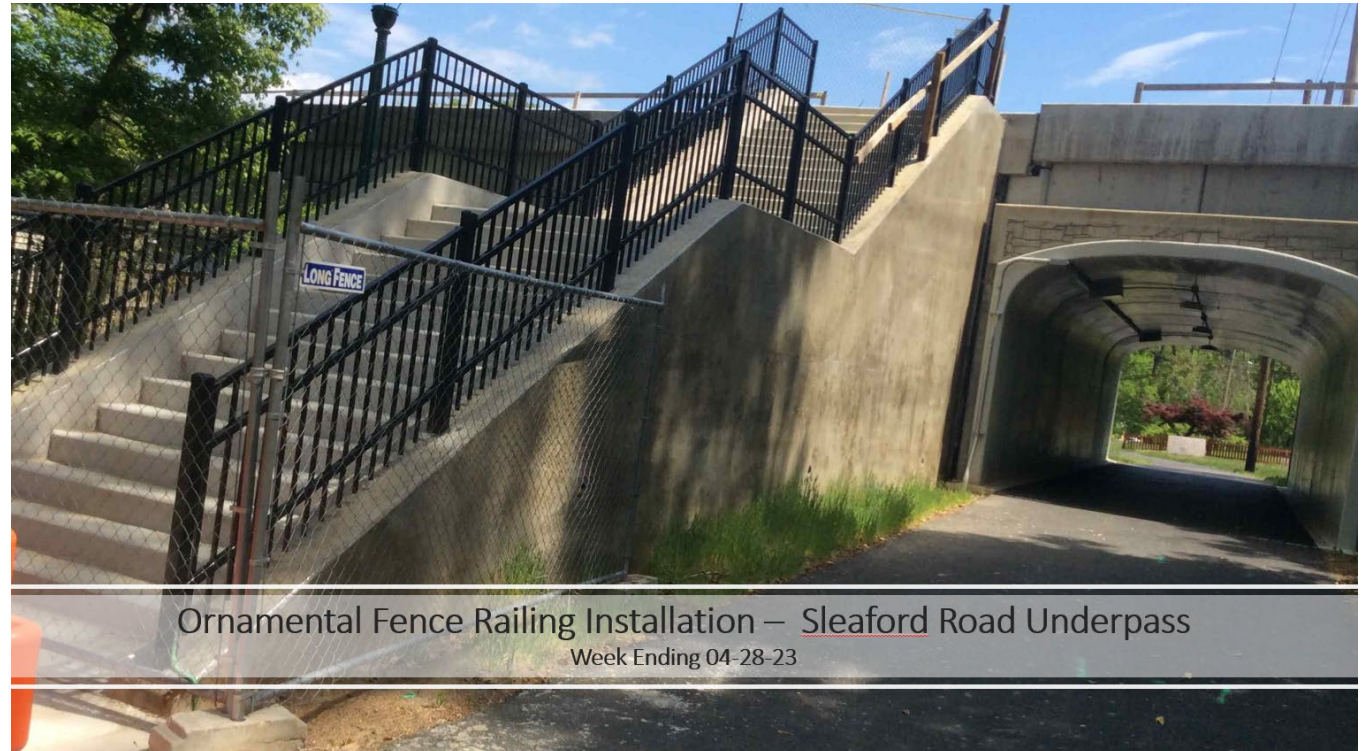
- In late May, MTA announced changes in leadership for the Purple Line project. As of June, Ray Biggs, II, Purple Line Project Director, is the point of contact. Alexa Heidrich is the new Deputy Project Director. Katheryn “Kat” Lamb is the Director of Communications for the project.
- MCDOT has received no additional information regarding changes to completion timeline for the Purple Line.
- Fall CAT meetings scheduled for October.
 - October 10 – Silver Spring
 - October 17th - Bethesda/Chevy Chase
 - October 24th – Lyttonsville/Woodside



Purple Line Update for CCCT

Project Update

- The project is more than 57% complete.
- Along the project there are more than 60 active construction sites with over 900 workers.
- 11 of 21 stations are under active construction.
- 98% of utility relocations are complete.

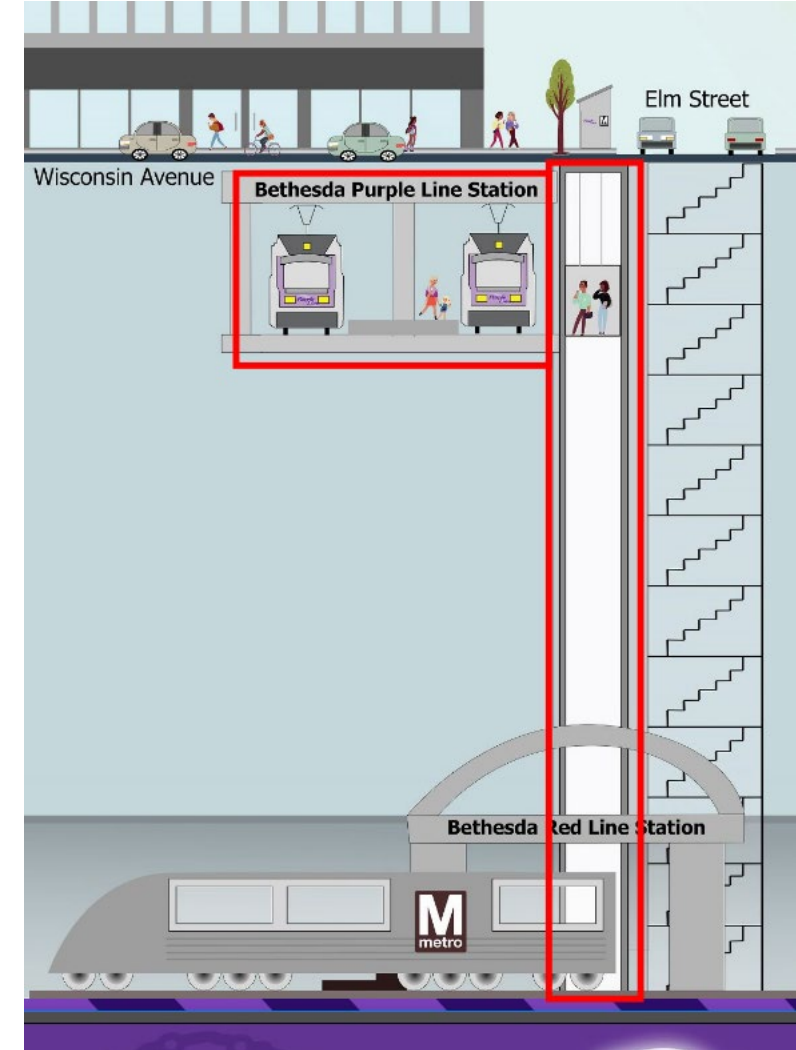


Purple Line - Bethesda

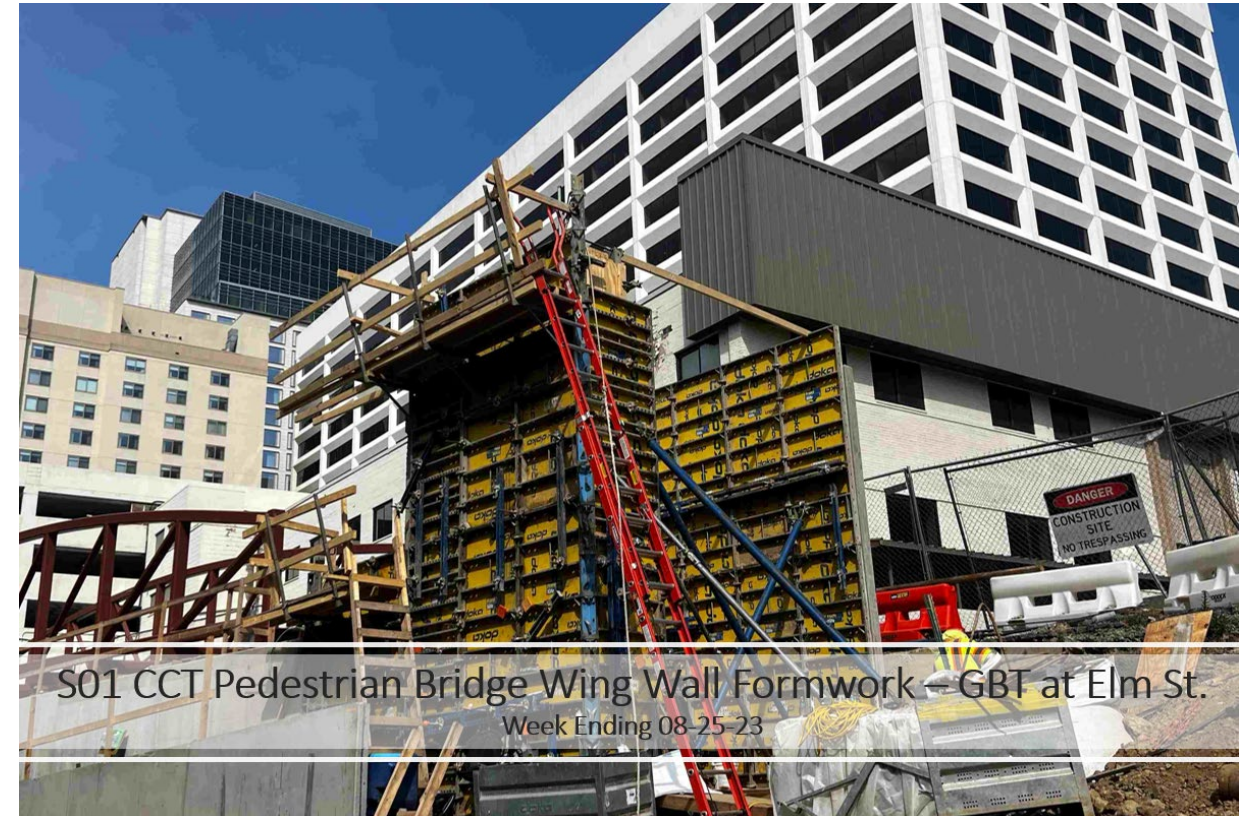
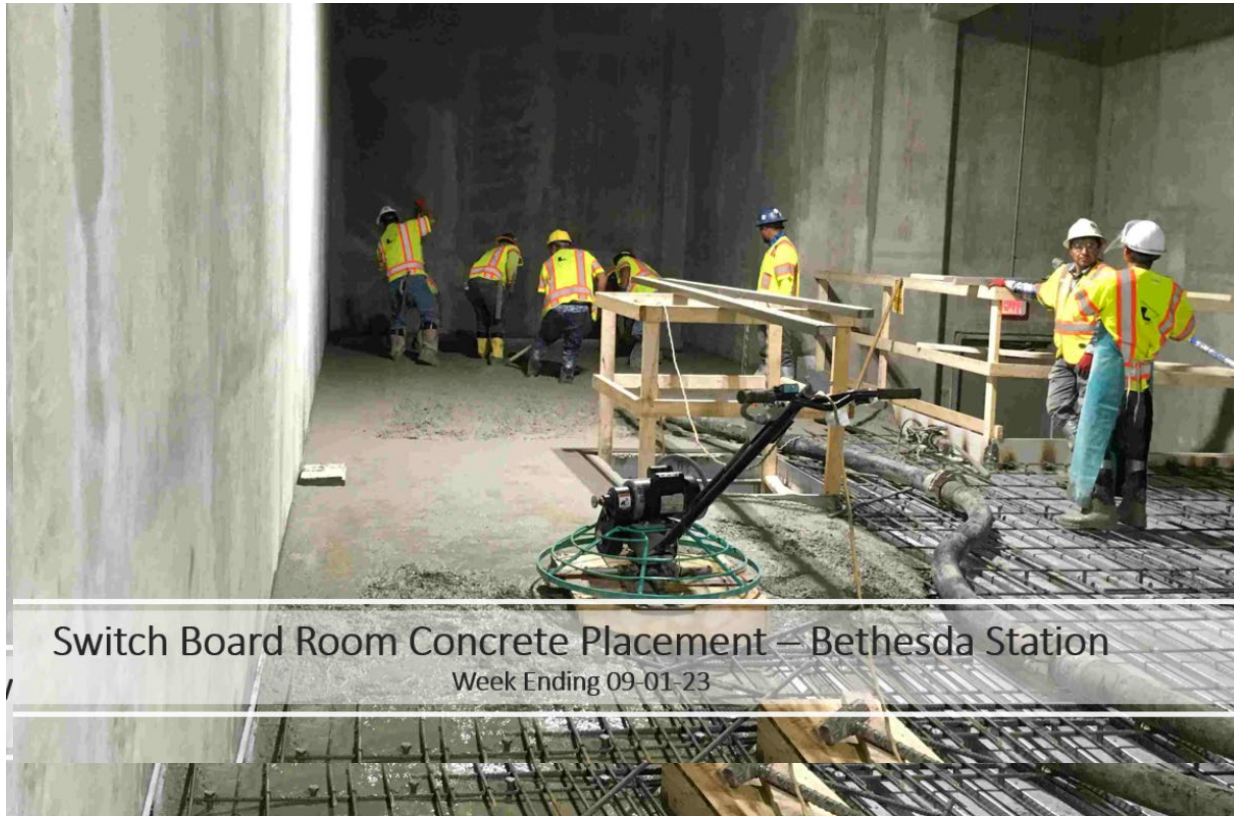
Construction Update

MTA and their contractors continue working:

- Final shaft depth was reached at 130 feet. Excavating now horizontally towards WMATA Red Line.
- Weekly blasting continues.
- Station construction continues.



Purple Line and GBT - Bethesda





S01 CCT Pedestrian Bridge Truss Assembled by MTS – Elm St.

Week Ending 07-21-23



S01 CCT Pedestrians Bridge Abutment A Cap Concrete – GBT at Elm St.

Week Ending 09-08-23

Purple Line and GBT - Bethesda

- Completed Sleaford Road underpass is complete and open to the public. Stairs in place for future connection to CCT.
- Walls and overhead catenary foundations in place.



Purple Line – Chevy Chase



S07 CCT Bridge Set in Place by MTS – Connecticut Ave
Week Ending 01-20-23

Purple Line and GBT – Chevy Chase

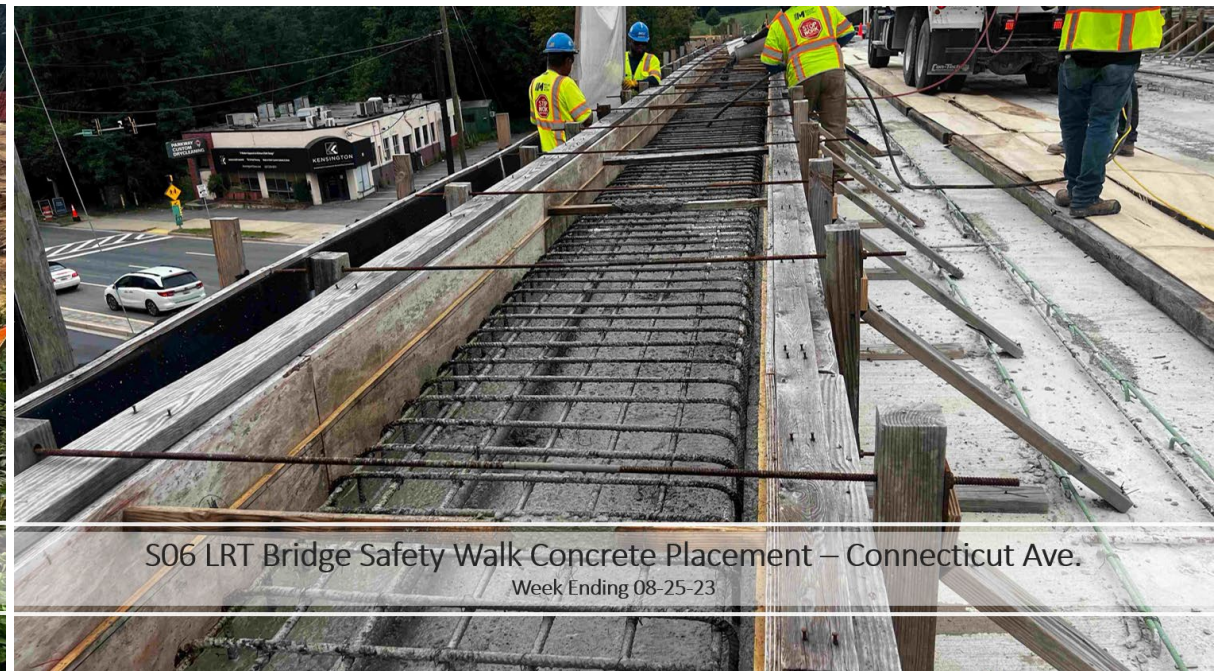
- Construction underway for the Connecticut Avenue Station.
- Utility relocations ongoing along Chevy Chase Lake Drive.
- Retaining and noise wall construction continues.



Concrete Placement for Stair Piers – Connecticut Ave. Station
Week Ending 08-11-23



POI 14 Manhole MH-14-107 Installation – GBT at Chevy Chase Lake Dr.
Week Ending 08-25-23



S06 LRT Bridge Safety Walk Concrete Placement – Connecticut Ave.
Week Ending 08-25-23

Purple Line & GBT – Jones Mill Road

- Critical utility connections and relocations have been completed.
- Jones Mill Road construction has begun and traffic should shift to complete sections by year end resulting in improved:
 - Visibility
 - Pedestrian Access



Purple Line and GBT – Lyttonsville

- Construction of retaining walls and OCS foundations continues from Rock Creek to Talbot Avenue.
- Stream Restoration efforts continue along Rock Creek Park.
- Construction of Lyttonsville Station continues with foundation and wall work.



Purple Line & GBT – Lyttonsville (cont'd)

- Completed retaining walls and approach slab to Talbot Avenue Bridge from Grace Church Road.
- Continued construction of retaining wall and approach ramp from Talbot Avenue to Talbot Avenue Bridge.
- Completed bridge deck placement and begin parapet walls and surrounding concrete work.
- Talbot Avenue Bridge reopen for use by year end.





Wall 1-088 Panel Installation work by MTS – GBT at Talbot Ave. Bridge
Week Ending 07-14-23



Wall 1-089 Formwork Removal – GBT at Talbot Ave. Bridge
Week Ending 09-08-23



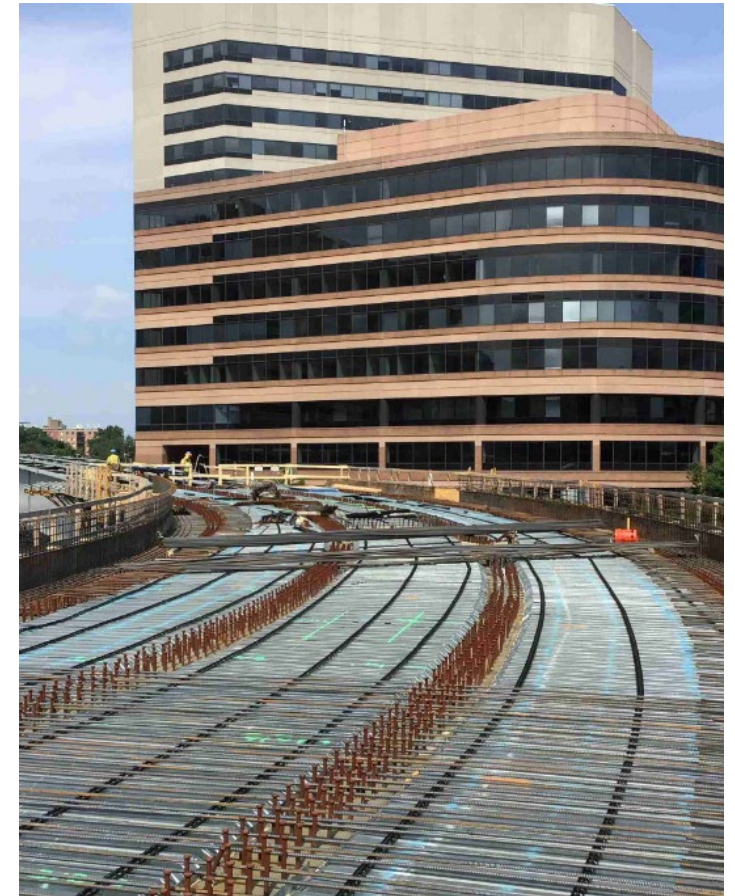


U105 Sewer Relocation Pavement Restoration – 3rd Avenue
Week Ending 08-11-23

Purple Line in Silver Spring



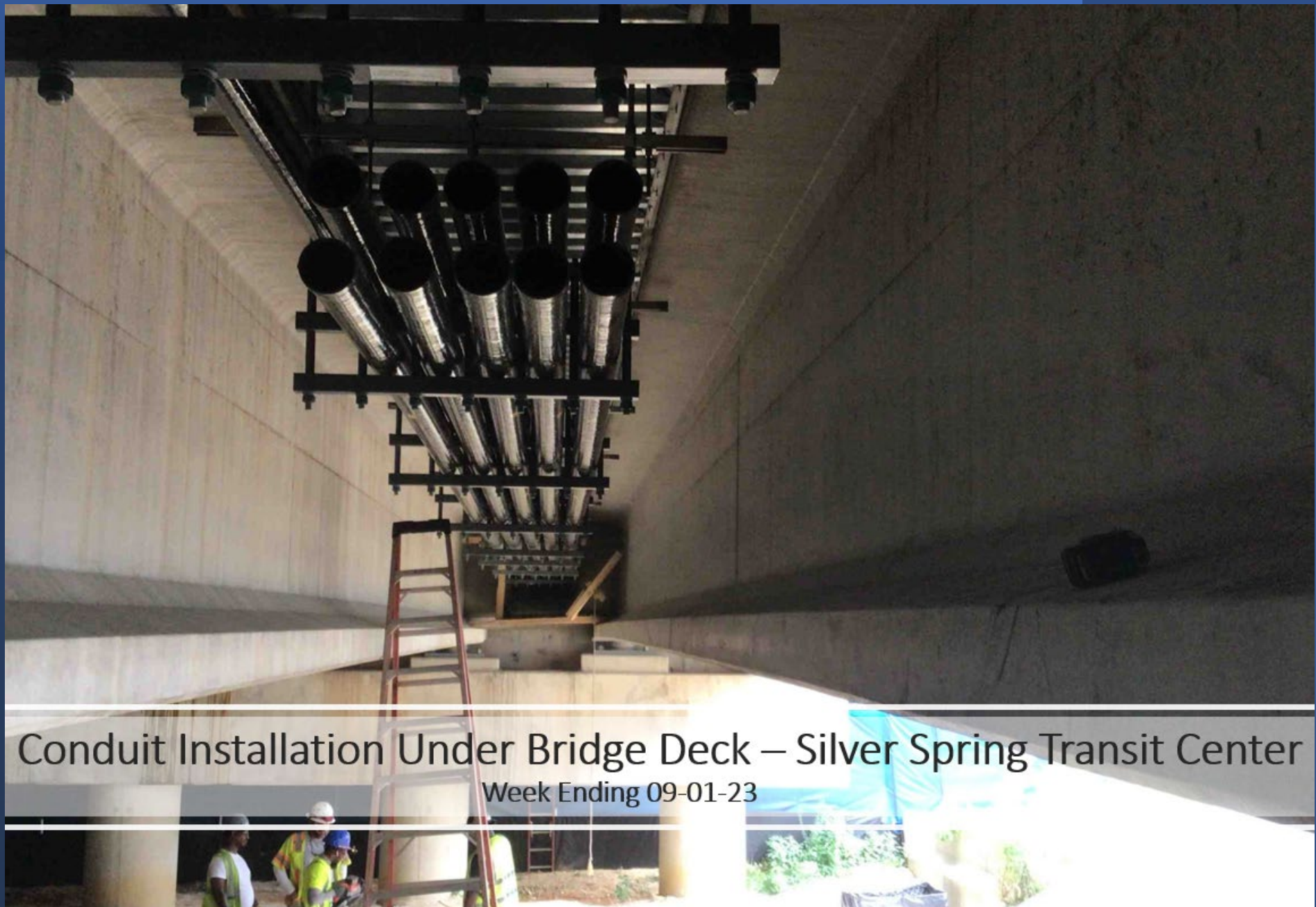
- Purple Line work continues at the Paul S. Sarbanes Transit Center as crews construct the Purple Line Station and the Mezzanine to the Metro and MARC stations.
 - Substantial work on the bridge over Colesville Road will resume in October with night work and lane closures on Colesville Road.
- Storm Drain and overhead catenary pole construction to continue on Bonifant Street.
- Crews continue work at the Brigadier General Charles E. McGee Library. Work involves excavation, utility relocations, systems and trackwork. Access to the library and businesses surrounding the library is maintained.






S20 Bridge Deck SIP work by MTS – Silver Spring Transit Center

Week Ending 07-14-23



Conduit Installation Under Bridge Deck – Silver Spring Transit Center
Week Ending 09-01-23



Pedestrian Walkway Demolition Work – Silver Spring Transit Center

Week Ending 09-01-23

Purple Line & GBT - Additional Construction Along The Way



Wall 1-003 Stem Formwork – Bethesda Enclosed Trainway

Week Ending 08-11-23

A photograph of a construction site for a concrete footing. The scene shows a deep excavation with a gravel base. A network of steel rebar is laid out in a grid pattern, held up by wooden forms and spacers. To the right, a large, light-colored concrete wall is visible, with a white pipe protruding from it. In the background, there is a wooden fence and some greenery. The overall lighting suggests it's daytime.

Wall 1-022 Footing Formwork – GBT at Sleaford Road
Week Ending 08-04-23



S13 Abutment A Slope Stabilization – Rock Creek LRT Bridge

Week Ending 08-04-23



Wall 1-079 Rebar & Formwork – GBT at Brookville Rd

Week Ending 08-25-23



Wall 1-080 Moment Slab Prep for Concrete – GBT at Lyttonsville

Week Ending 08-11-23



S18 Parapet Wall Formwork — Talbot Ave. Bridge

Week Ending 08-25-23



S20 Silverspring Transit Aerial LRT Bridge Span 6 Formwork by MTS – Silver Spring

Week Ending 06-23-23



Platform Foundation Formwork by MTS – Silver Spring Metro Station
Week Ending 07-07-23

Purple Line Update for CCCT

**Get Construction Updates at
purplelinemd.com**

- For project questions and comments, contact MTA public outreach:
 - outreach@purplelinemd.com
 - Call: 443.451.3706 or 443.451.3705 (para español)



/MarylandPurpleLine



@PurpleLineMD

Questions?