

MONTGOMERY PARKS



Capital Crescent Trail Update

September 11, 2023

A large orange circle is positioned on the left side of the slide, partially cut off by the edge.

Agenda

Trails Program Highlights

Capital Crescent Trail

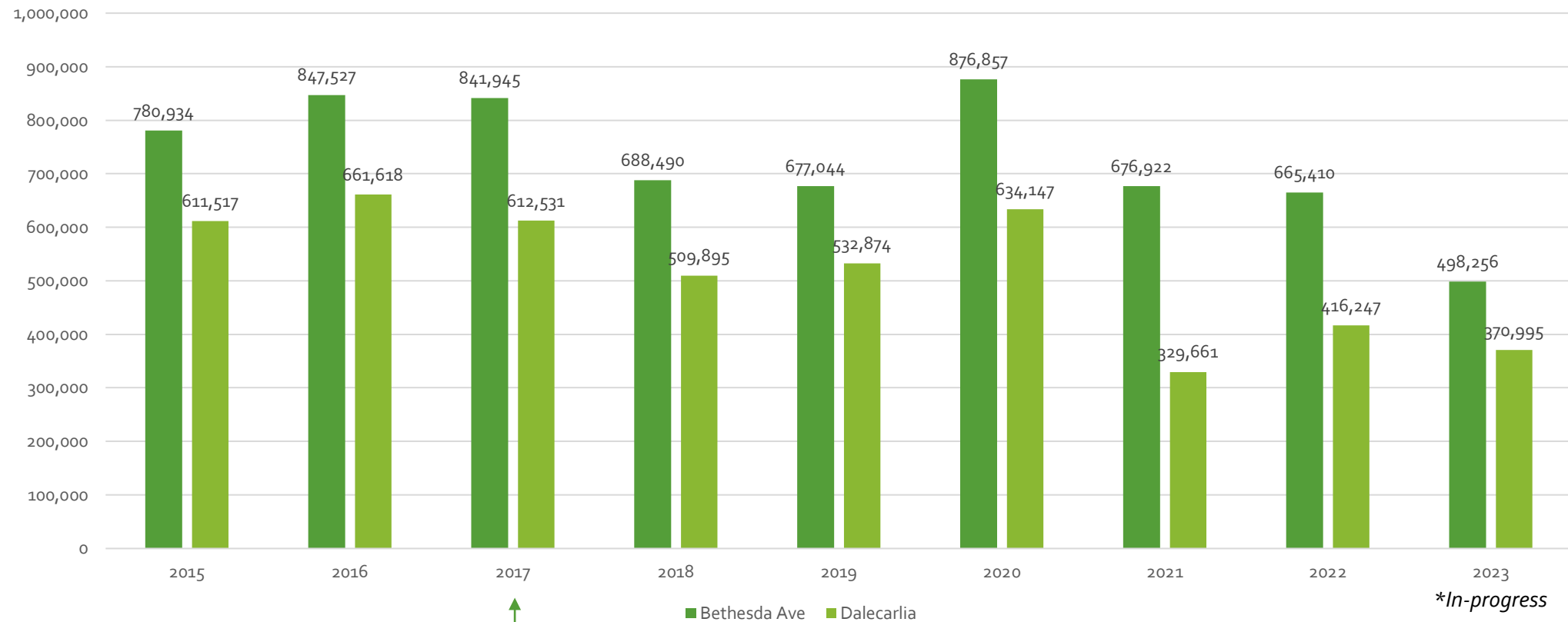
- Annual Stats
- Current Topics
- CCT 2.0 Facility Plan



Trail Program Highlights

- **RAISE Grant - \$18.5**
 - Sligo Creek Trail Renovation
 - Federal Funds: \$3,375,000 / Matching Funds: \$2,125,000
 - Northwest Branch Paved Trail Renovation
 - Federal Funds: \$2,350,000 / Matching Funds: \$850,000
- **Safe Streets & Routes for All Grant -Safe Routes to Parks - \$7.5m**
 - Sligo Creek Trail
 - Matthew Henson Trail
 - Wheaton Regional Park
- **Trail Design & Construction**
 - Little Falls Trail Rehab & Stormwater Management Retrofit Design

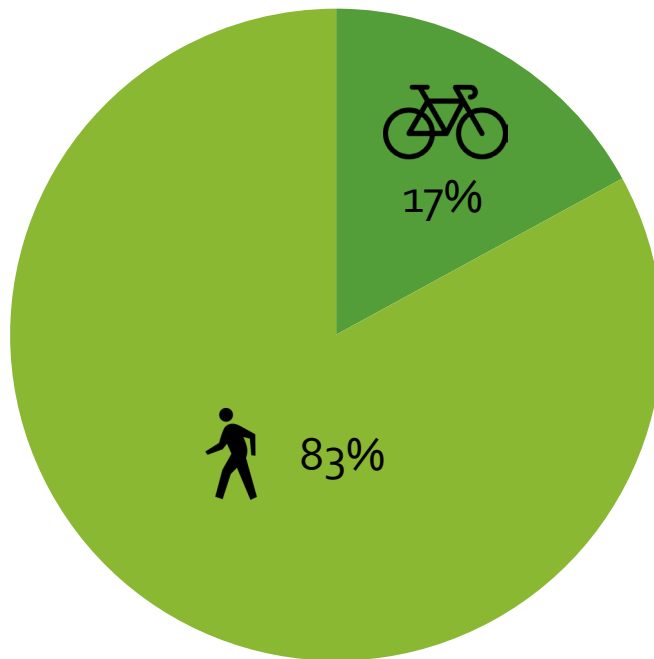
Annual Use Statistics



↑
*Georgetown Branch
closed Sept 2017*

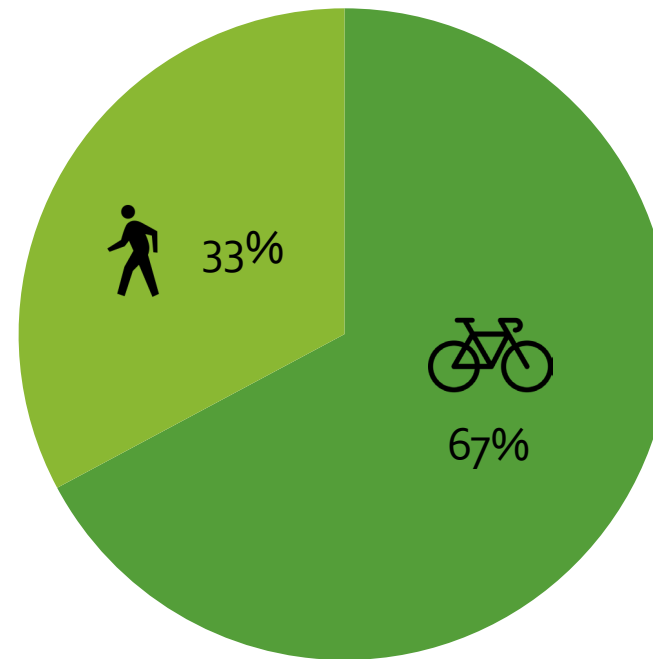
Trail Use - Mode Share

Bethesda Ave



Average Daily Pedestrians = 1,776
Average Daily Cyclists = 365

Dalecarlia Tunnel

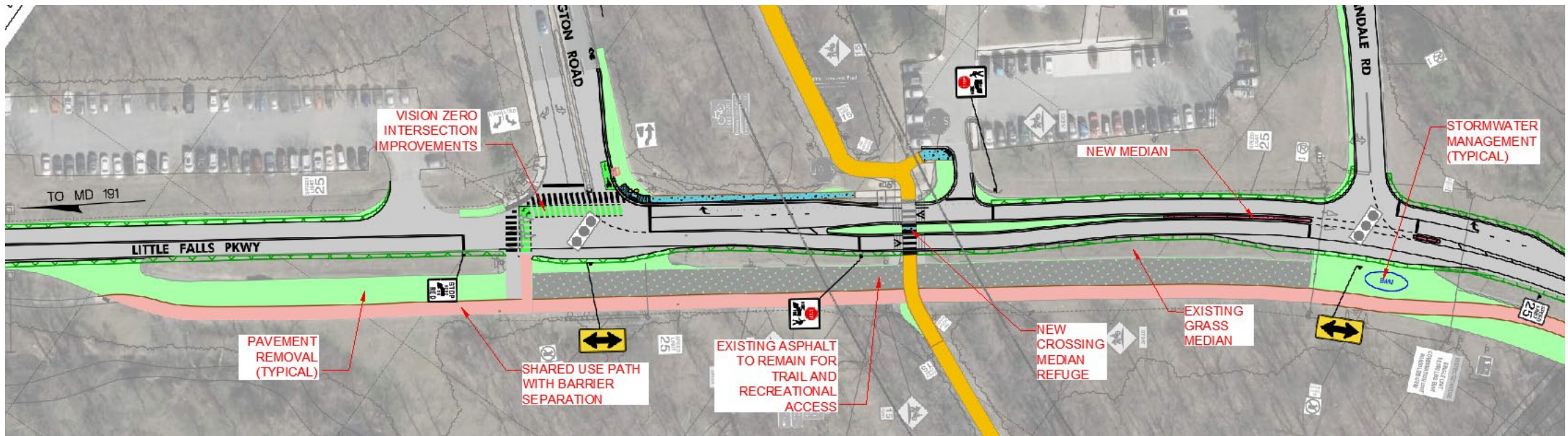


Average Daily Pedestrians = 485
Average Daily Cyclists = 993

CURRENT TOPICS

Future Neighborhood Park in Lyttonville





LFP & CCT CROSSING

Presenting concepts to County Council in October for review



WASHINGTON AQUEDUCT DISCHARGE



SPEEDING & SIGNAGE

Dalecarlia Tunnel Lighting



Centerline Striping

Montgomery Parks Centerline Striping Policy included in the Hard Surface Trail Wayfinding Manual recommends that a yellow centerline stripe may be used to separate opposite directions of travel on Shared Use Paths where passing is inadvisable. This stripe should be **dashed where there is adequate passing sight distance**, and **solid in locations where passing is not advisable**. This may be particularly beneficial on trails with **heavy user volumes** or on unlit paths where night-time bicycling is likely to occur.

- **Dashed Yellow Centerlines:**
 - Parallel and in close proximity to local roadways
 - Approaches to pedestrian bridges
 - High activity areas where pedestrian traffic could abruptly cross the trail
 - Gentle curves or slight constrictions of the trail width
- **Solid Yellow Centerlines:**
 - Adjacent to mid-block low-volume roadway crossings
 - On curves with restricted sight distance and/or in combination with a steep slope
 - The approach to intersections (both sides). If used, the centerline should be striped solid up to the stopping sight distance from edge of sidewalk (or roadway, if no sidewalk is present). A consistent approach to intersection striping can help to increase awareness of intersections



CCT 2.0 FACILITY PLAN

FY 24

Facility Plan for the
Capital Crescent & Metropolitan Branch Trails



prepared by:
Lardner/Klein Landscape Architects, P.C.
in association with
Daniel Consultants Inc.

What is a Facility Plan?

- Results in 30% design with reliable cost estimate
 - Program of Requirements
 - SWM concept approval
 - FCP approval
 - Will allow us to request a stand-alone PDF for the project
- Review and analyze existing conditions
- Site survey
- Geotechnical Analysis
- Natural Resources Inventory
- Trail Alignment Alternatives
- Stormwater Management Concepts

Facility Plan Components

Existing Conditions Analysis

- Trail Survey
- Signage Inventory
- Trail and Pavement Conditions
- Existing Areas of Disturbance
- ADA Accessibility
- Natural Resources Inventory
- Archaeological / Cultural Inventory

Trail Design

- Trail Widths & Mode Separation
- Trail Crossings
- Dalecarlia Tunnel
- Stormwater Management
- Trail Connectivity
 - Neighborhood Connections
 - Little Falls Promenade
 - Little Falls Trail
- Cost Estimates

Amenities

- Bike Racks
- Bike Fix-it Station
- Benches
- Picnic Tables
- Lighting
- Trash
- Water Fountain
- Exercise Station
- Trailhead
- Restroom
- Informational Signage
- Other



Fall 2023 - Public Outreach

- Project Website
- Public Meetings Listening Session
 - Tentative Dates:
 - 11/7/23 – In-Person Meeting
 - 11/9/23 – Virtual Meeting
- Online Interactive Map for collecting input
- Site Walks
- Coordination with Civic Associations
- Coordination with the Coalition for the Capital Crescent Trail

CONTACT INFO

Kyle Lukacs – Trails Planner, Montgomery Parks

Kyle.Lukacs@Montgomeryparks.org