

CICLAVIA

Presented by Metro

6 miles

1/2 mile

CicLAvia Route

Crossing Points for Cars

Metro Rail Stations

FOR MORE INFORMATION
Para más información
info@ciclavia.org / 213.355.8500
ciclavia.org / @ciclavia

December 2, 2018



CHINATOWN
DOWNTOWN
LITTLE TOKYO
ARTS DISTRICT
BOYLE HEIGHTS
CICLAVIA

A FIELD GUIDE TO
HEART OF LA

We come from all parts of the region and today we return to where our journey together started, here in the Heart of LA. From this route in 2010, we began a community tradition which is transforming the way we think about our streets. We've since flowed outward with each other, making new friends and becoming closer as a community in the process.

This 28th CicLAvia is the finale to another great season. In 2018, we traveled again through the open streets in Northeast San Fernando Valley and visited eastern San Gabriel Valley for the first time. We punctuated the year with an epic celebration of LA—its art, music and diverse culture—in honor of the LA Phil's 100th birthday. Today we flow back to the heart of the region, gathering again to celebrate both our diversity and who we are collectively—the foundation of the movement to reimagine the region one ride, roll, stroll, dance, and smile at a time. Thank you for a memorable 2018 season.

— The CicLAvia Team

OPEN STREETS
MADE POSSIBLE BY



OUR PARTNERS



OUR SUPPORTERS

Annenberg Foundation
David Bohnett Foundation
Wasserman Foundation

OUR COMMUNITY PARTNERS

California Highway Patrol
Indie Printing
Los Angeles Cleantech Incubator
Los Angeles County Bicycle Coalition
Los Angeles Public Library
National Park Service

OUR SPONSORS

AARP Los Angeles
Capital One
First 5 LA
Los Angeles Federal Credit Union
Pure Cycles
REI
SoCal Gas
Southern California Edison
Tern Bicycles
Thousand

OUR MEDIA PARTNERS

Laemmle Theatres
The Los Angeles Times

We are planning 6 routes for 2019, the MOST ever in a single year.

Culver City **PALMS** **GLENDALE**
ATWATER **Wilmington** **East Hollywood**
West Hollywood **HOLLYWOOD**
CHINATOWN **LITTLE TOKYO**
CIVIC CENTER **Historic Core**
Boyle Heights **West San Fernando Valley**



CicLAvia is a 501c3 non-profit that counts on contributions from people like you to make car-free street events happen.

Join our community of supporters today to help make 6 routes possible in 2019!

Thank you.

ciclavia.org/donations



7TH STREET HUB

Sign up for a **free Los Angeles Public Library card** and keep an eye out for the roaming Book Bike. Free books will be given to people with library cards.

Check out the latest in folding bikes from **TERN**.

Stop by the **Metro** activation and check out a Metro Bike, buy a Metro Bike Share Monthly Pass, play games to win cool Metro prizes, learn to put your bike on a Metro Bus bike rack, and chat with Metro planning staff.

Make sure to visit the **Capital One** booth for amazing giveaways, games, and prizes.

The **Mayor's Great Streets Initiative** invites you to hang out at their pop-up parklet! Come and learn how to apply for the Round 3 Great Streets Community Challenge Grant. The grant offers successful applicants an opportunity to transform their streets into safer, more accessible and more vibrant corridors.

Plug into the phone charging station at the **LADWP Solar Trailer** and let the sun repower your phone.

NEAR THE HUB:

Check out the **Historic Core Farmers Market** along 5th Street, between Spring and Broadway.



CHINATOWN HUB

Visit the **LA Ranger Troca**, a food truck turned mobile visitor center for the Santa Monica Mountains. Learn more about the National Parks Services programs, then scale their 25' rock wall.

Capture a snapshot of your day at the **Las Fotos Project** photo booth.

Does your child need a helmet? Stop by the **California Highway Patrol** booth and get fitted for a free kids helmet (while supplies last).

Enjoy bites from one of the many local restaurants, challenge your friends to a match of ping pong, and enjoy other programming presented by the **Chinatown Business Improvement District**.



LITTLE TOKYO HUB

Leave your mark on a community art bike by **CicLAvia x Pure Cycles**.

Stop by the **REI Co-op** station for a camping themed rest and relaxation area, a prize wheel for a chance at cool swag, and take pictures with a "special guest" who you can share your outdoor gear wish-list with (and a chance to win an item off your list)!

Explore one of LA's most vibrant historic neighborhoods—unique cultural programs, community events, and the best dining and shopping experiences—in **Little Tokyo**! Learn more at golittletokyo.com.

Stop by the **Thousand** Safety Checkpoint to get your helmet fitted, check your brakes, tire pressure and saddle height and learn other bike safety tips.



EVERGREEN HUB

Complete the **kids bike safety skills** course and get a free helmet (while supplies last) courtesy of CicLAvia.

Street Poets will be on-site with their Poetry in Motion Van, a mobile performance venue and recording studio, inspiring creative community, empowering people of all ages and backgrounds to express themselves on the page and on the mic.

Grab a bite from some of LA's best **food trucks**.

Relax in the **AARP** play zone while catching up over vintage board games.

Stop by the **AARP** booth for a chance to win an autographed LA Galaxy jersey and other prizes (while supplies last) and learn more about AARP's involvement in the community. Follow @AARPCalifornia (FB) or @AARPCA (Twitter) for additional details.



MARIACHI PLAZA HUB

Stop by the **Metro** virtual bike share kiosk to check out a Metro bike (9am to 2pm).

Diaper changing and breastfeeding stations by **First 5 LA**.

Grab lunch, snacks and fresh produce at the **Boyle Heights Community Market**.

Don't miss DJ Fuego, Folklorico Dancers, and workout classes at the Mariachi Plaza Bandshell presented by the **Boyle Heights Community Market**.

Don't have a helmet? Stop by the **El Centro de Ayuda** booth for a free bike helmet (while supplies last) and learn more about their work in the community.

Visit map.ciclaviala.org for activities and specials along the route!

All hubs will have restrooms, bike repair, free water, first aid and bike parking.

Catch a free pedicab ride—brought to you by AARP. Pedicab stops are near the info booth at each hub.

LOCAL GEMS ALONG THE ROUTE

1 Roosevelt Building/7th St. Metro 727 W 7th St

Built in 1927, this building (named for Theodore Roosevelt) was designed by Curlett and Beelman and was reported to be the largest office building in Southern California at the time.

2 Broadway-Spring Arcade 541 S Spring St

Built in 1924, this shopping arcade (now full of a diverse array of restaurants including the downtown branch of Boyle Heights' Guisados) connects two 12-story office towers, one on Broadway, one on Spring.

3 Far East Plaza 727 N Broadway

In recent years, some of LA's hottest dining spots have taken over spaces in this unassuming 1970s shopping mall, including Roy Choi's Chego and Scoops Ice Cream. The modern Filipino spot LASA was one of Jonathan Gold's favorites, and the line for Howlin' Ray's hot chicken can be down the block.

4 Mandarin Plaza 970 N Broadway

This 1980s open air mall is home to many art and design studios and art galleries. Check out the current installation, *Steam Egg*, by Materials and Applications.

5 1st St. Historic District

1st St between Judge John Aiso St and Alameda

Located in the heart of Little Tokyo, this block was declared a National Historic Landmark District in 1995. Embedded in the sidewalk is a timeline of the neighborhood's history by artists Sheila Levant de Bretteville and Sonya Ishii.

6 Fourth and Traction/T.T. Toys 963 E 4th Pl

This recently completed adaptive reuse project repurposed the historic T.T. Toys building (originally Coca-Cola's West Coast HQ) as creative office space and ground floor retail.

7 LACI 525 S Hewitt

Just a block south of our route today, the Los Angeles Cleantech Incubator houses start-ups working on renewable energy, sustainable production, and other eco-friendly fields. It is also home to two non-profits working to make our city more livable, River LA and CicLAvia.

8 4th St. Viaduct

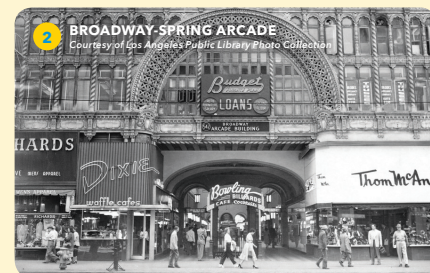
Designed by Merrill Butler, who was responsible for many of the city's most spectacular historic bridges, this 1931 reinforced concrete bridge replaced an older, wooden one that was built in 1903.

9 Breed Street Shul 247 N Breed St

This 1922 ornate synagogue was the largest Orthodox synagogue in the West and could accommodate 1,100 people. The Shul served as the center of Boyle Heights' Jewish community. Today, it has been restored as a cultural center.

10 Evergreen Cemetery & Jogging Path 204 N Evergreen Ave

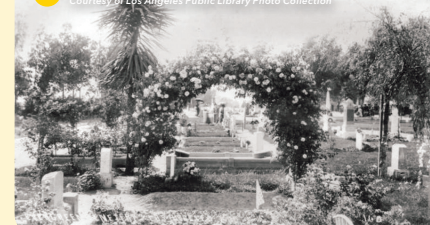
A 70-acre cemetery founded in 1877, Evergreen was the first privately owned burial ground to serve the city. In 2003, the Latino Urban Forum and neighborhood residents rallied support to create a soft jogging path around the cemetery.



2 BROADWAY-SPRING ARCADE
Courtesy of Los Angeles Public Library Photo Collection



8 NEWLY CONSTRUCTED 4TH ST VIADUCT, 1931
Courtesy of Los Angeles Public Library Photo Collection



10 EVERGREEN CEMETERY, built in 1877
Courtesy of Los Angeles Public Library Photo Collection