

CiclaViva is a 501c3 non-profit that counts on contributions from people like you to make car-free street events happen. Join our community of supporters today to help make 6 routes possible in 2019!

ciclaviva.org/donations

Laemmle Theatres
The Los Angeles Times

CICLAVIA
A FIELD GUIDE TO CULVER CITY
MEETS MAR VISTA + PALMS



ARTS DISTRICT HUB

Grab a bite from some of LA's best **food trucks**.

Make sure to visit the **Capital One** booth for amazing giveaways, games, and prizes.

Stop by the **LA County Registrar's** booth and make sure you're registered to vote!

NEAR THE HUB

Check out the shops and eateries in the **Culver City Arts District**, and stop by the **Historic Helms Bakery District** to eat, drink, and shop!



DOWNTOWN CULVER CITY HUB

Check out the latest in folding bikes from **TERN**.

Culver CityBus is celebrating 91 years of service! Stop by their booth for giveaways, Metro Pop-Up Shop, our famous Bus Photo Booth, and a close-up look at our Anniversary Wrapped Bus. Learn more about working for and riding Culver CityBus. Grab a route schedule and pick up a commemorative TAP card!

Relax in the **AARP** play zone while catching up over vintage board games.

Bike valet!

NEAR THE HUB

Enjoy a leisurely lunch in one of the many eateries in Downtown Culver City or grab a quick bite and dine al fresco along Culver Blvd. Check out a killer line up of live bands programmed by the **Downtown Business Association**. And stop by the **Kirk Douglas Theatre** for your chance to win free tickets and to create your very own roller derby trading card, sponsored by the upcoming production of "For the Love Of (or the Roller Derby Play)".

Stop by the **Metro** outreach booth at the Culver City Expo Station to chat with Metro Planning Staff, make a customized license plate for your bike, and check out an all-new Smart Metro Bike (with several new stations on the Westside).



PALMS HUB

Street Poets will be in their Poetry in Motion Van, a mobile performance venue and recording studio, empowering people of all ages and backgrounds to express themselves on the page and on the mic.

Learn more about **Neighborhood Councils** in LA, the **Mayor's Volunteer Engagement** program, and the **Department of City Planning's** community plan updates in the Westside!

Ride **Metro Bike Share** at CicLAvia! Stop by their booth in Palms to chat with staff and check out the all-new Smart Metro Bike (with several new stations on the Westside!).

NEAR THE HUB

Stop by the **Motor Ave Farmers Market** on National west of Motor.

WASHINGTON PIT STOP: Stop by Washington Blvd. at Harter St. for free water, porta potties, and free basic bike repair!



WASHINGTON WEST HUB

Visit the **LA Ranger Troca**, a food truck turned mobile visitor center for the Santa Monica Mountains. Learn more about the National Parks Services programs, then scale their 25' rock wall.

Complete the **kids bike safety skills** course with Walk n Rollers and get a free helmet (while supplies last) courtesy of CicLAvia.

Stop by the **Thousand Safety Checkpoint** to get your helmet fitted, check your brakes, tire pressure and saddle height, and learn other bike safety tips.

Stop by **reDiscover Center's** booth and create fantastical streamers and fun decorations for your bicycle, scooter, helmet, or stroller.

Grab a bite and a drink at one of the many local restaurants in the **Washington West Business District**. Food and drink specials galore.

Enjoy live performances by Taiko drummers, dance by Brazil Brazil, Ooks of Hazzard, and more, programmed by the **Washington West Business District**.



MAR VISTA HUB

Does your child need a helmet? Stop by the **California Highway Patrol** booth and get fitted for a free kids helmet (while supplies last).

Join the **Skateside** to learn basic skateboarding skills.

Plug into the phone charging station at the **LADWP Solar Trailer** and let the sun repower your phone.

Visit the **JUMP** booth for a free adult helmet (while supplies last).

Sign up for a **free Los Angeles Public Library card** and keep an eye out for the roaming Book Bike. Free books will be given to people with library cards.

The **Mayor's Great Streets Initiative** invites you to hang out at their pop-up parklet! Learn how to apply for the **2019 Great Streets Challenge Grant**. They're offering ten communities up to \$2.5 million in outreach support and infrastructure investments. Snap a photo with your dream Great Street at the parklet to earn points for the Scavenger Hunt!

Learn more about the new "Downtown Mar Vista" in the Great Streets segment of Venice Blvd. Metro and LADOT will have bike share and Microtransit shuttle info, and there will be a solar DJ. If you're looking for a fun challenge and want to learn about the new public art, pedestrian safety and street-scape improvements, stop by **Councilmember Mike Bonin's** booth to participate in the Great Streets Scavenger Hunt.

Grab some sweets and treats at some of our favorite **dessert trucks!**

NEAR THE HUB

Stop by the **Mar Vista Farmers Market** on Grand View south of Venice for fresh fruits, veggies, and prepared foods!

Check out live local music, bounce houses, chalk art, and live screenprinting throughout the Great Streets corridor, programmed by **Council District 11**.

Ride **Metro Bike Share** at CicLAvia! Stop by their booth at Venice and Colonial to chat with staff and check out the all-new Smart Metro Bike (with several new stations on the Westside!).

Stop by Venice High School to enjoy food trucks programmed by the **Venice High Booster club**.

LOCAL GEMS ALONG THE ROUTE

1 Ballona Creek Bike Path *Entrance at Syd Kronenthal Park (National Blvd.)*

This 8-mile bike and pedestrian path runs alongside the channelized Ballona Creek from here to Marina del Rey, where you can travel to both the Ballona Lagoon and the Venice canals. It also links up to the Marvin Braude Bike Trail along the beach.

2 Helms Bakery 8800 Venice Blvd.

This 1931 Art Deco building, once the family-owned and operated Helms Bakery, is now the centerpiece of a busy retail and restaurant district. Opened during the Depression, the bakery supplied many jobs; instead of being sold in stores, fresh-baked bread was delivered "Daily at Your Door" across the Southland.

3 The Culver Studios *9336 W Washington Blvd.*

This is the second major film studio in Culver City to be built by silent-era director Thomas Ince, built in 1918. Past owners include Howard Hughes and Joseph Kennedy. *Citizen Kane*, *Gone with the Wind* and *E.T.* are among the many classic films shot here.

4 Sony Pictures Studios W Washington Blvd. *from Hughes Ave. to Overland Ave.*

Originally founded by Thomas Ince as the Ince/Triangle Studios in 1915, this was the first film studio built in Culver City. After Ince moved on to build what is now the Culver Studios, this studio was sold to Metro-Goldwyn-Mayer (MGM). In 1990, the Sony Corporation purchased the remaining studio, restoring its historic properties and turning it into a state-of-the-art facility for film and television production.

5 Kirk Douglas Theatre *9820 W Washington Blvd.*

A former movie palace, this Streamline Moderne theatre, built in 1947, was originally the Culver Theatre. After an extensive restoration project, the theatre was reopened in 2004 as part of LA's Center Theatre Group.

6 Motor Avenue Parklet *3272 and 3370 Motor Ave.*

Installed as part of LADOT's People St program, these two parklets maintained by the Motor Avenue Improvement Association remove street parking to provide public seating for pedestrians, residents, and business patrons on Motor Ave.

7 Mitsuwa Marketplace *3760 S Centinela Ave.*

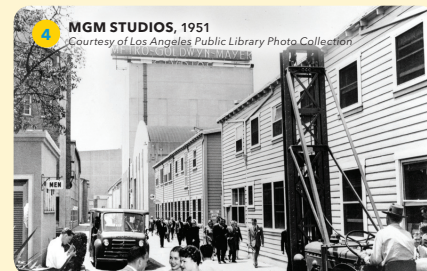
This branch of the U.S.'s largest Japanese supermarket chain includes many restaurants and a Kinokuniya bookstore. Mitsuwa is representative of the large Japanese American population that has historically lived nearby in Sawtelle.

8 826LA 12515 Venice Blvd.

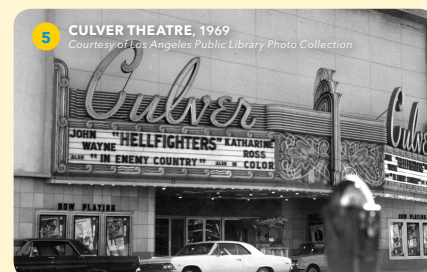
826LA is a nonprofit dedicated to supporting youth with their writing skills, with after-school tutoring, writing workshops, and the creation of student publications. There's also a shop at this location selling Time Travel equipment.

9 Venice High School 13000 Venice Blvd.

Originally built at the Kinney Company's old Lagoon Bathhouse in 1911, the school moved to this site, and many of the current Art Deco buildings date to the 1930s, when they were rebuilt after the 1933 Long Beach earthquake.



4 MGM STUDIOS, 1951
Courtesy of Los Angeles Public Library Photo Collection



5 CULVER THEATRE, 1969
Courtesy of Los Angeles Public Library Photo Collection



9 VENICE HIGH SCHOOL, 1920
Courtesy of the California Historical Society Collection