

COMPONENTS OF CONTRACT PLANS SET

- ROADWAY PLANS
- SIGNING AND PAVEMENT MARKING PLANS
- SIGNALIZATION PLANS
- LIGHTING PLANS
- STRUCTURE PLANS

INDEX OF SIGNING AND PAVEMENT MARKING PLANS

SHEET NO.	SHEET DESCRIPTION
S-1	KEY SHEET
S-2	GENERAL NOTES
S-3 - S-13	SIGNING AND PAVEMENT MARKING PLAN
S-14 - S-16	SPECIAL DETAILS
S-17 - S-18	GUIDE SIGN WORKSHEETS

**STATE OF FLORIDA
DEPARTMENT OF TRANSPORTATION**

SIGNING AND PAVEMENT MARKING PLANS

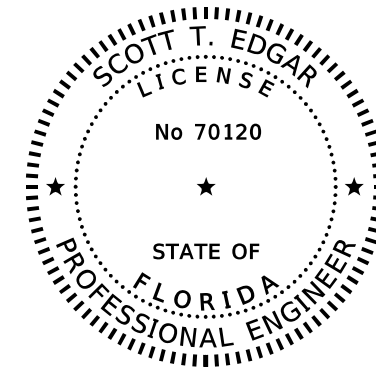
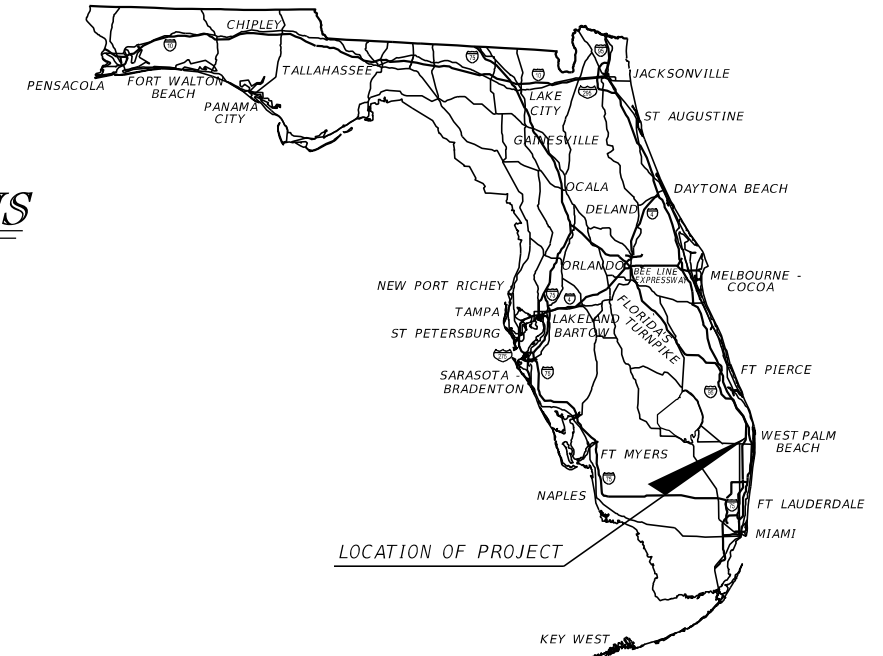
**FINANCIAL PROJECT ID 441570-1-52-01
(FEDERAL FUNDS)**

PALM BEACH COUNTY (93000129, 93000045)

36TH ST

FROM NORTH AUSTRALIAN AVENUE TO NORTH FLAGLER DRIVE

PROJECT LOCATION URL: <https://tinyurl.com/2p9xktzw>
 PROJECT LIMITS: BEGIN MP 0.000 - END MP 0.821
 BEGIN MP 3.049 - END MP 3.298
 EXCEPTIONS: NONE
 BRIDGE LIMITS: (937704) MP 0.084 - MP 0.096
 RAILROAD CROSSING: DOT/SFRC RAILROAD CROSSING NO. 628104V, RR MP: 967.59 AND
 DOT/FEC RAILROAD CROSSING NO. 272405C, RR MP: 297.06



THIS ITEM HAS BEEN DIGITALLY SIGNED AND SEALED BY

ON THE DATE ADJACENT TO THE SEAL

PRINTED COPIES OF THIS DOCUMENT ARE NOT CONSIDERED SIGNED AND SEALED AND THE SIGNATURE MUST BE VERIFIED ON ANY ELECTRONIC COPIES.

THE ABOVE NAMED PROFESSIONAL IS RESPONSIBLE FOR THE FOLLOWING SHEETS IN ACCORDANCE WITH RULE 61G15-23.004, F.A.C.

**SIGNING AND PAVEMENT MARKING PLANS
ENGINEER OF RECORD:**

SCOTT T. EDGAR, P.E. NO.: 70120
 ERDMAN ANTHONY OF FLORIDA, INC.
 5405 OKEECHOBEE BLVD., SUITE 200
 WEST PALM BEACH, FL 33417
 (561) 753-9723
 CONTRACT NO.: CAB48
 VENDOR NO.: F200930234

FDOT PROJECT MANAGER:

BINOD BASNET, P.E.

CONSTRUCTABILITY

CONSTRUCTION CONTRACT NO.	FISCAL YEAR	SHEET NO.
T-XXXX	24	S-1

GENERAL NOTES:

1. FOR DELIVER AND UNLOAD OF REMOVED STREET SIGNS COORDINATE WITH THE FLORIDA DEPARTMENT OF TRANSPORTATION DISTRICT 4 AND CITY OF WEST PALM BEACH.
2. THE STATION AND OFFSET ARE PER D SURVEY 36TH ST UNLESS OTHERWISE STATED IN PLANS.
3. ALL PAVEMENT MARKINGS ARE TO BE THERMOPLASTIC UNLESS OTHERWISE STATED IN PLANS.

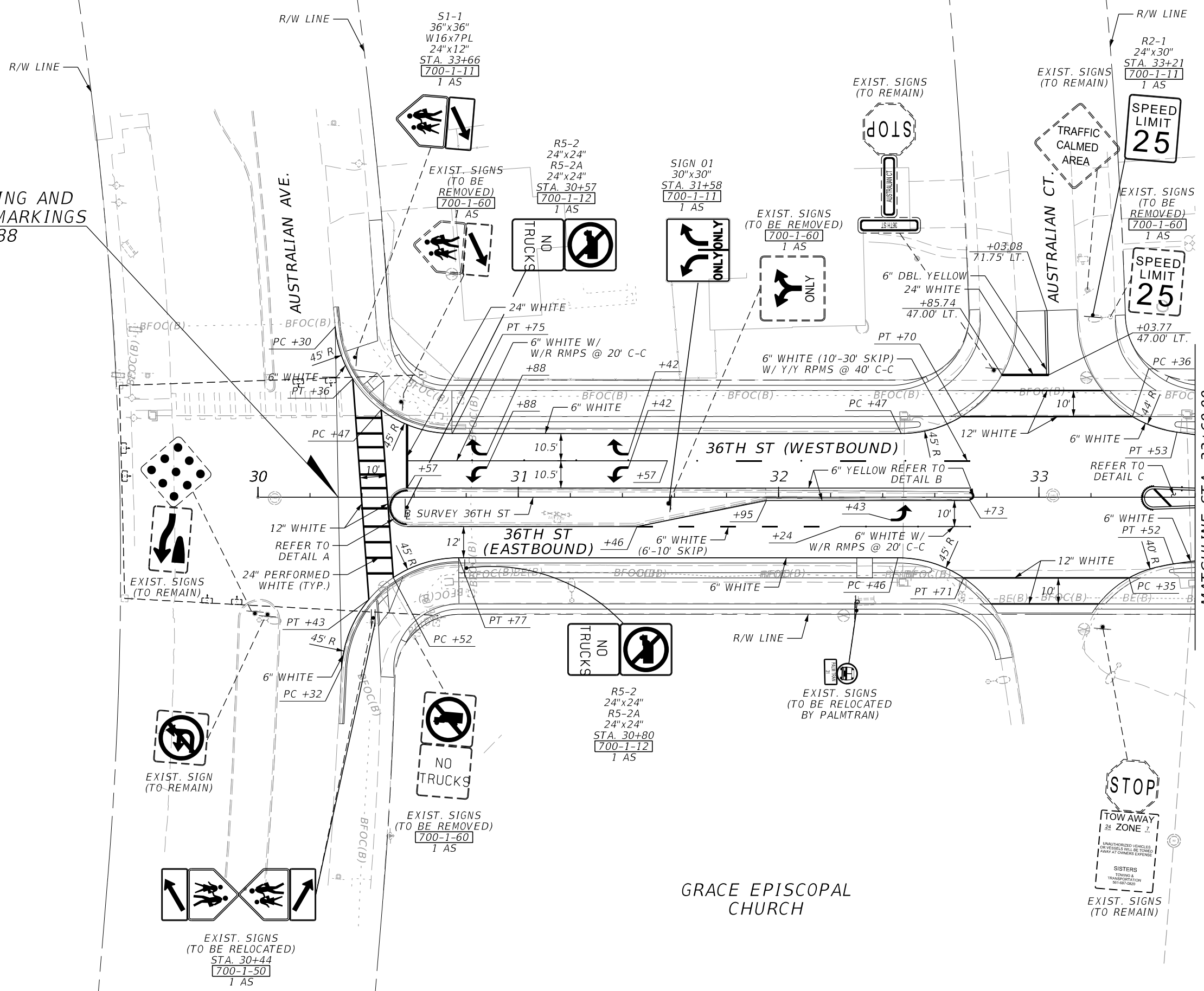
10/25/2022 9:21:39 AM LeL
 N:\60335-00-36thStreet\FDOT\44157015201\SigningAndMarking\GNWTSPO1.dgn

THE OFFICIAL RECORD OF THIS SHEET IS THE ELECTRONIC FILE DIGITALLY SIGNED AND SEALED UNDER RULE 61G15-23.004, F.A.C.

REVISIONS				ENGINEER OF RECORD	STATE OF FLORIDA DEPARTMENT OF TRANSPORTATION			<i>GENERAL NOTES</i>	SHEET NO.
DATE	DESCRIPTION	DATE	DESCRIPTION	SCOTT T. EDGAR, P.E. LICENSE NUMBER 70120 ERDMAN ANTHONY OF FLORIDA, INC. 5405 OKEECHOBEE BLVD, SUITE 200 WEST PALM BEACH, FL 33417	ROAD NO.	COUNTY	FINANCIAL PROJECT ID		S-2
						36TH ST	PALM BEACH		



BEGIN SIGNING AND PAVEMENT MARKINGS
STA. 30+30.88

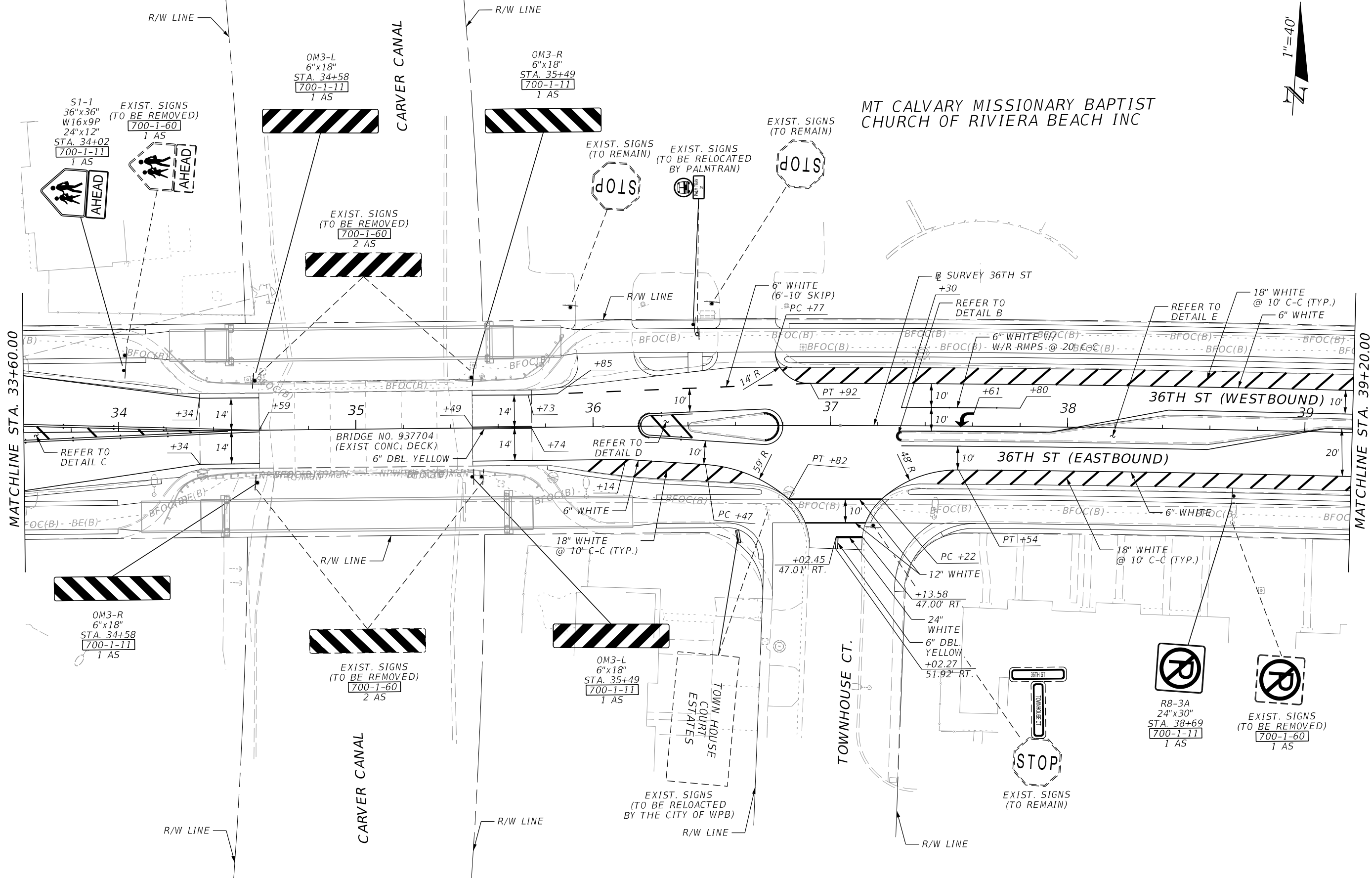


10/25/2022 9:21:49 AM LeL N:\60335-00-36\InStreet\VDOT\44157015201\SigningAndMarking\PLANS\PO1.dgn

REVISIONS		ENGINEER OF RECORD		STATE OF FLORIDA DEPARTMENT OF TRANSPORTATION			SHEET NO.
DATE	DESCRIPTION	DATE	DESCRIPTION	ROAD NO.	COUNTY	FINANCIAL PROJECT ID	
			SCOTT T. EDGAR, P.E. LICENSE NUMBER 70120 ERDMAN ANTHONY OF FLORIDA, INC. 5405 OKEECHOBEE BLVD, SUITE 200 WEST PALM BEACH, FL 33417	36TH ST	PALM BEACH	441570-1-52-01	S-3

SIGNING AND PAVEMENT MARKING PLAN

THE OFFICIAL RECORD OF THIS SHEET IS THE ELECTRONIC FILE DIGITALLY SIGNED AND SEALED UNDER RULE 61G15-23.004, F.A.C.



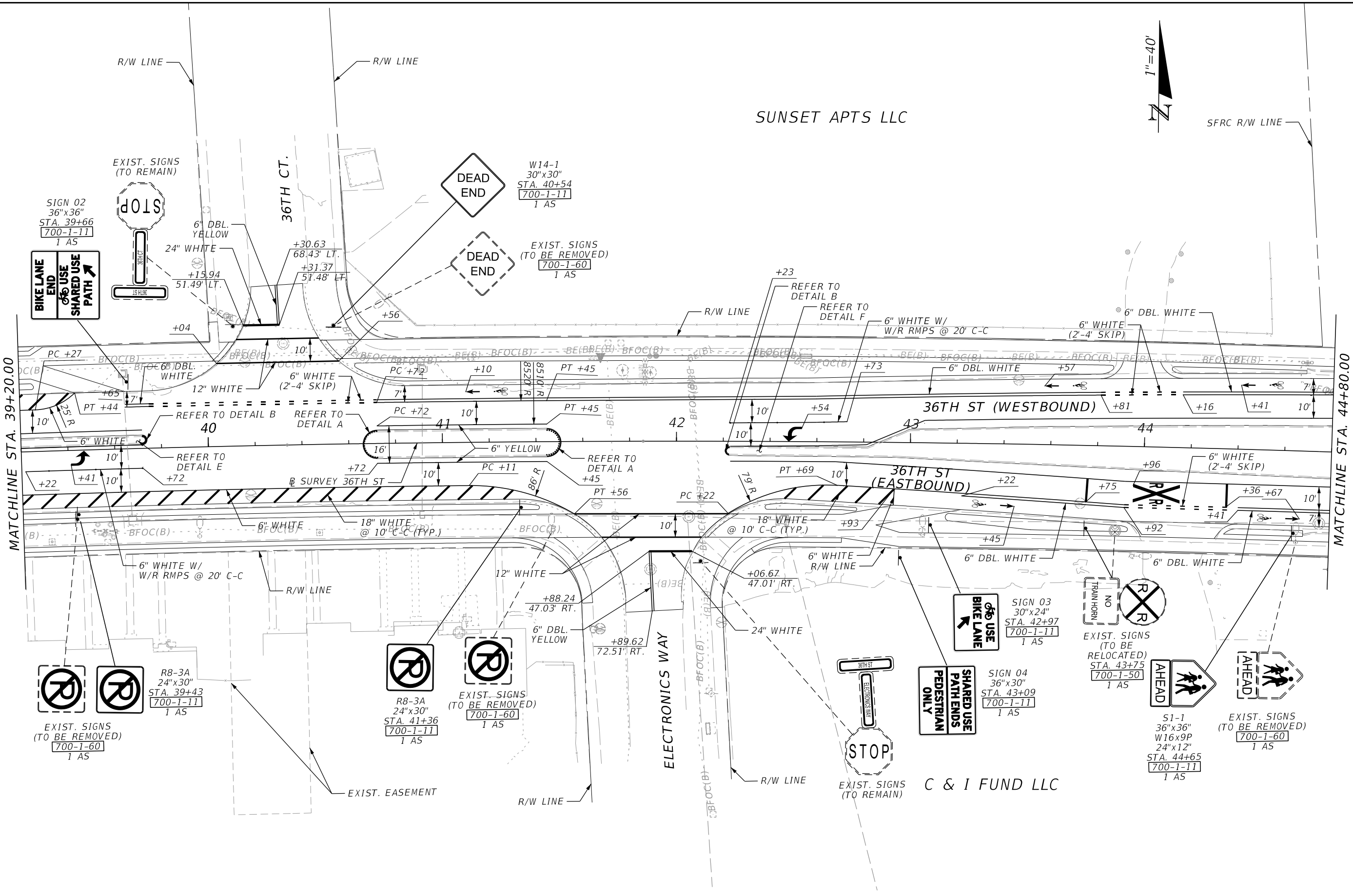
10/25/2022 9:21:49 AM LeL N:\60335-00-36thStreet\FDOT\44157015201\SigningAndMarking\PLANS\PO1.dgn

THE OFFICIAL RECORD OF THIS SHEET IS THE ELECTRONIC FILE DIGITALLY SIGNED AND SEALED UNDER RULE 61G15-23.004, F.A.C.

REVISIONS		ENGINEER OF RECORD		STATE OF FLORIDA DEPARTMENT OF TRANSPORTATION			SHEET NO.
DATE	DESCRIPTION	DATE	DESCRIPTION	ROAD NO.	COUNTY	FINANCIAL PROJECT ID	
			SCOTT T. EDGAR, P.E. LICENSE NUMBER 70120 ERDMAN ANTHONY OF FLORIDA, INC. 5405 OKEECHOBEE BLVD, SUITE 200 WEST PALM BEACH, FL 33417	36TH ST	PALM BEACH	441570-1-52-01	S-4

**SIGNING AND PAVEMENT
MARKING PLAN**

10/25/2022 9:21:50 AM LeL N:\60335-00-36\Street\FDOT\44157015201\SigningAndMarking\PLANS\01.dgn



SUNSET APTS LLC



SFRC R/W LINE

MATCHLINE STA. 39+20.00

MATCHLINE STA. 44+80.00

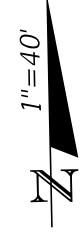
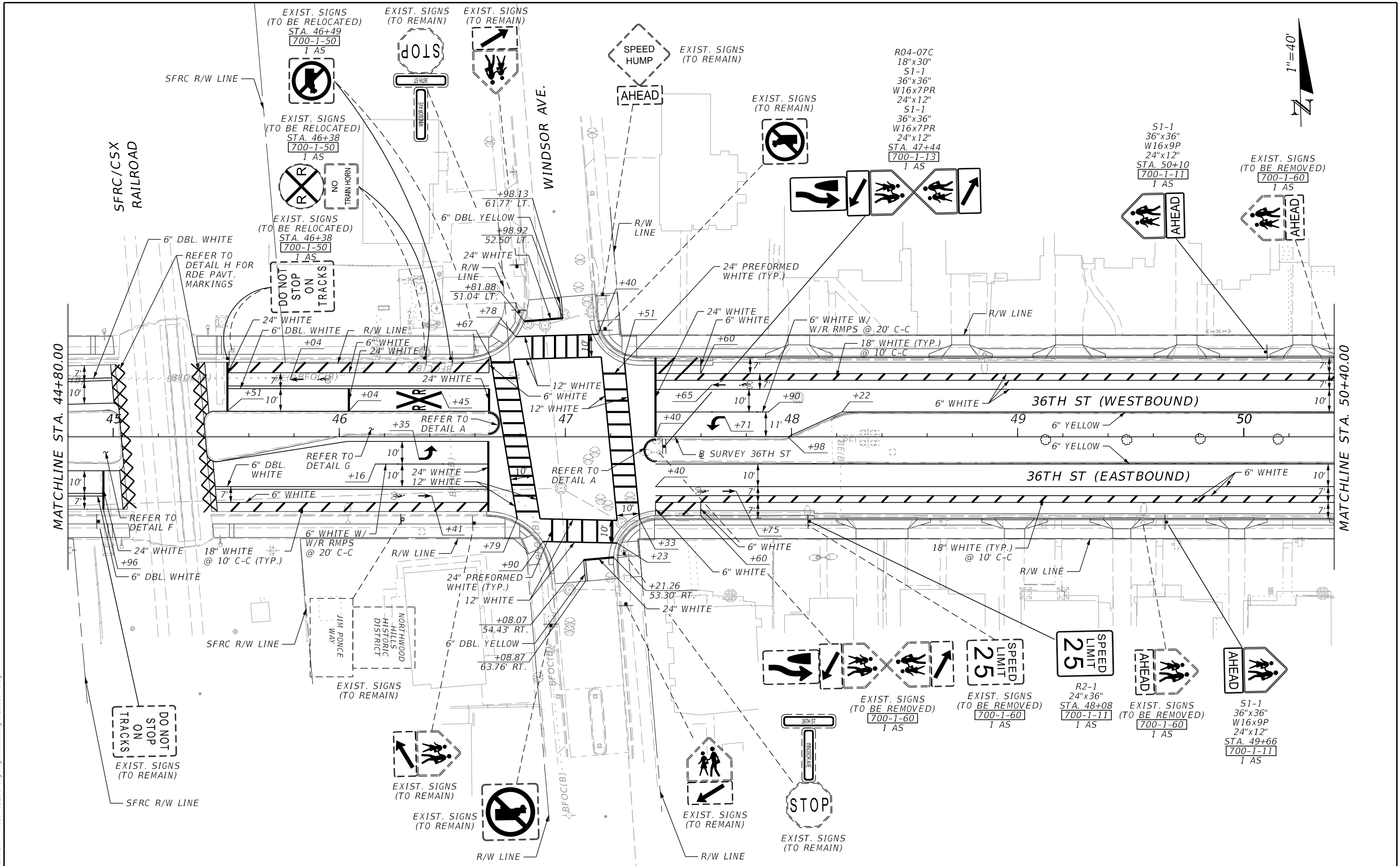
ELECTRONICS WAY

C & I FUND LLC

REVISIONS		ENGINEER OF RECORD		STATE OF FLORIDA DEPARTMENT OF TRANSPORTATION			SHEET NO.
DATE	DESCRIPTION	DATE	DESCRIPTION	ROAD NO.	COUNTY	FINANCIAL PROJECT ID	
				36TH ST	PALM BEACH	441570-1-52-01	
				SIGNING AND PAVEMENT MARKING PLAN			S-5

THE OFFICIAL RECORD OF THIS SHEET IS THE ELECTRONIC FILE DIGITALLY SIGNED AND SEALED UNDER RULE 61G15-23.004, F.A.C.

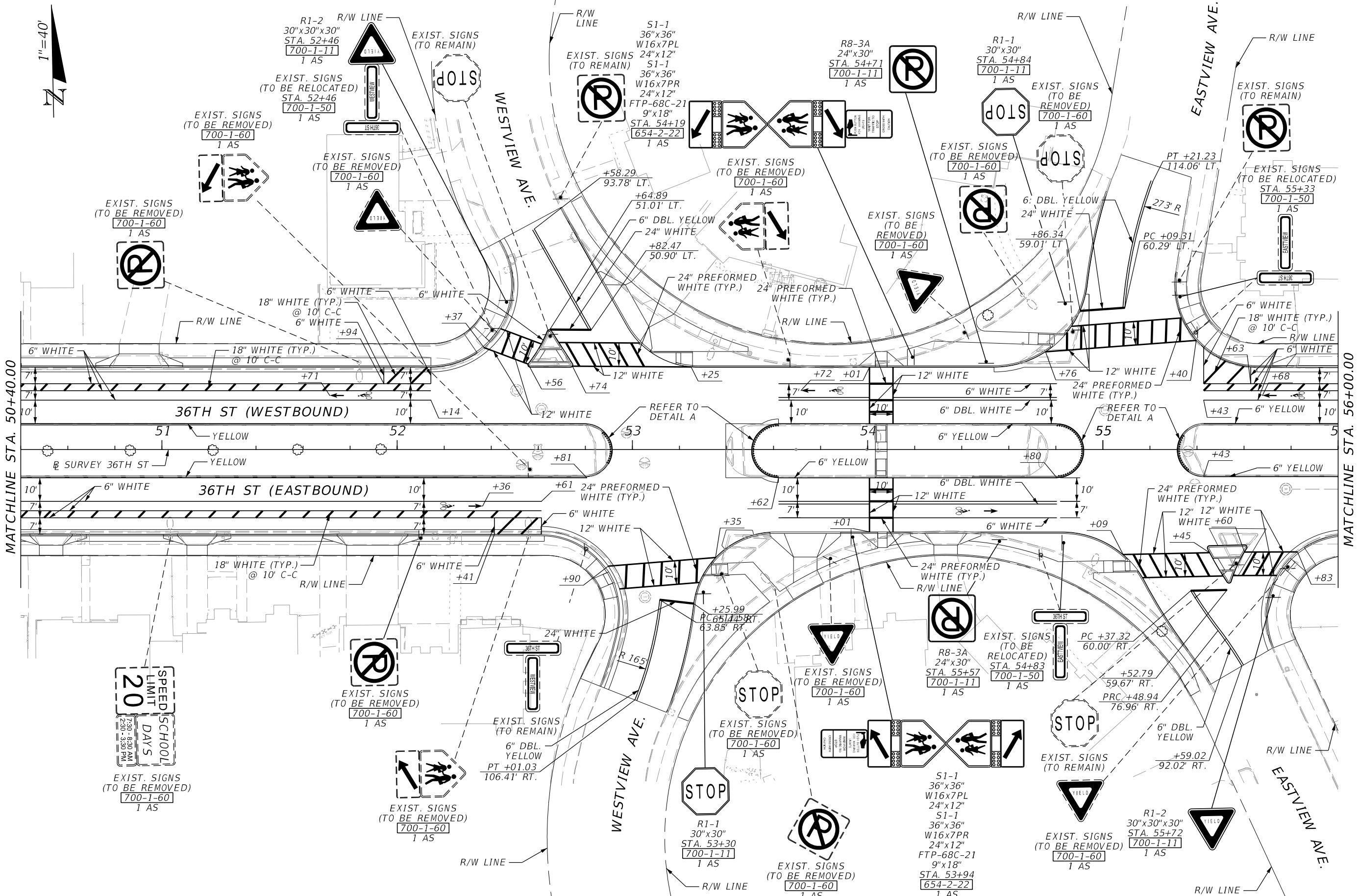
10/25/2022 9:21:50 AM LeL N:\60335-00-36thStreet\FDOT\4415201\SigningAndMarking\PLANS\01.dgn



REVISIONS		ENGINEER OF RECORD		STATE OF FLORIDA DEPARTMENT OF TRANSPORTATION			SHEET NO.
DATE	DESCRIPTION	DATE	DESCRIPTION	ROAD NO.	COUNTY	FINANCIAL PROJECT ID	
			SCOTT T. EDGAR, P.E. LICENSE NUMBER 70120 ERDMAN ANTHONY OF FLORIDA, INC. 5405 OKEECHOBEE BLVD, SUITE 200 WEST PALM BEACH, FL 33417	36TH ST	PALM BEACH	441570-1-52-01	S-6
				SIGNING AND PAVEMENT MARKING PLAN			

THE OFFICIAL RECORD OF THIS SHEET IS THE ELECTRONIC FILE DIGITALLY SIGNED AND SEALED UNDER RULE 61G15-23.004, F.A.C.

10/25/2022 9:21:51 AM LeL N:\60335-00-36\Street\FDOT\44157015201\SigningAndMarking\PLANS\01.dgn



MATCHLINE STA. 50+40.00

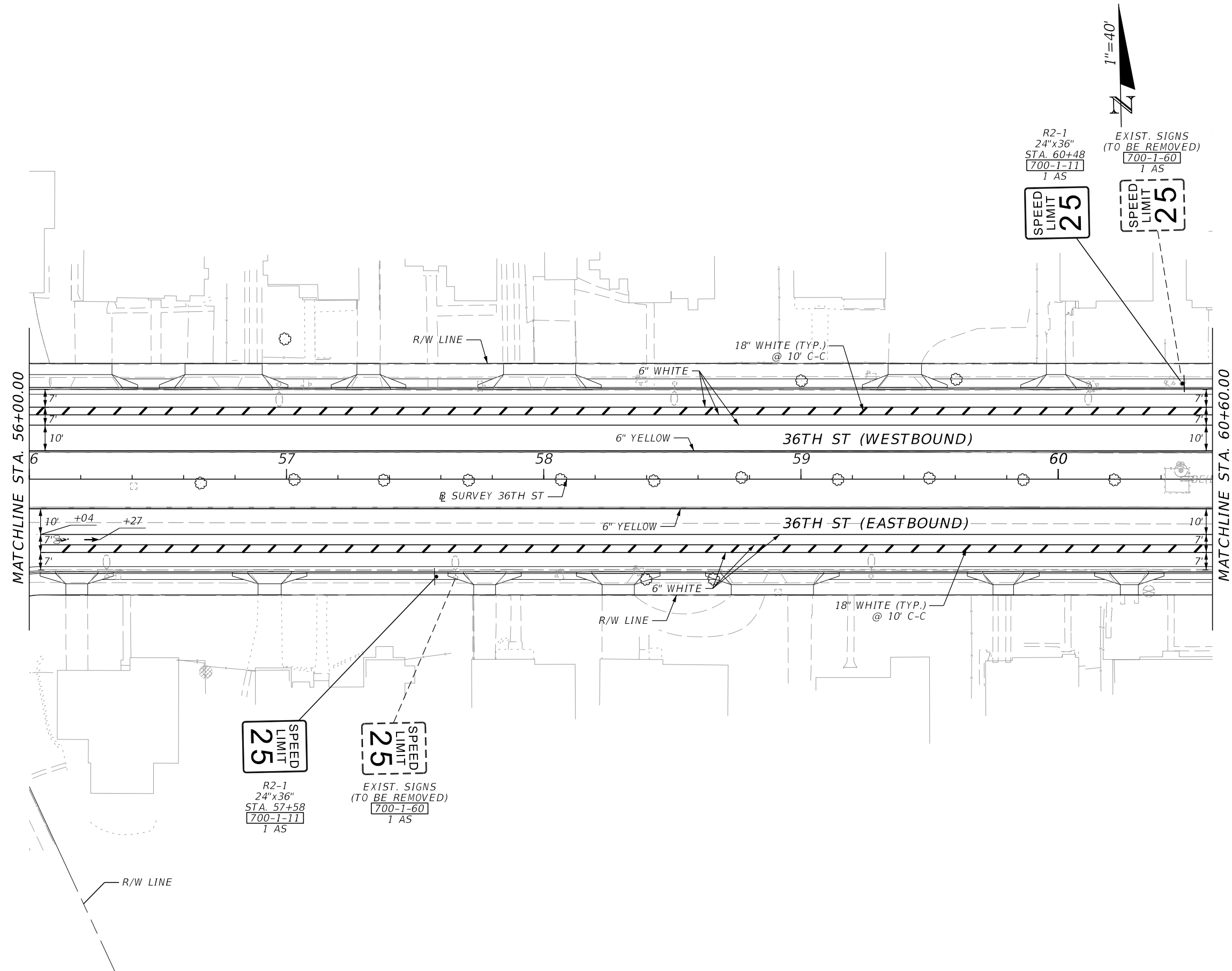
MATCHLINE STA. 56+00.00

REVISIONS		ENGINEER OF RECORD		STATE OF FLORIDA DEPARTMENT OF TRANSPORTATION			SHEET NO.
DATE	DESCRIPTION	DATE	DESCRIPTION	ROAD NO.	COUNTY	FINANCIAL PROJECT ID	
			SCOTT T. EDGAR, P.E. LICENSE NUMBER 70120 ERDMAN ANTHONY OF FLORIDA, INC. 5405 OKEECHOBEE BLVD, SUITE 200 WEST PALM BEACH, FL 33417	36TH ST	PALM BEACH	441570-1-52-01	S-7

SIGNING AND PAVEMENT MARKING PLAN

THE OFFICIAL RECORD OF THIS SHEET IS THE ELECTRONIC FILE DIGITALLY SIGNED AND SEALED UNDER RULE 61G15-23.004, F.A.C.

10/25/2022 9:21:51 AM LeL
 N:\60335-00-36thStreet\FDOT\44157015201\SigningAndMarking\PLANS\PO1.dgn



R2-1
 24"x36"
 STA. 57+58
 700-1-11
 1 AS

EXIST. SIGNS
 (TO BE REMOVED)
 700-1-60
 1 AS

R2-1
 24"x36"
 STA. 60+48
 700-1-11
 1 AS

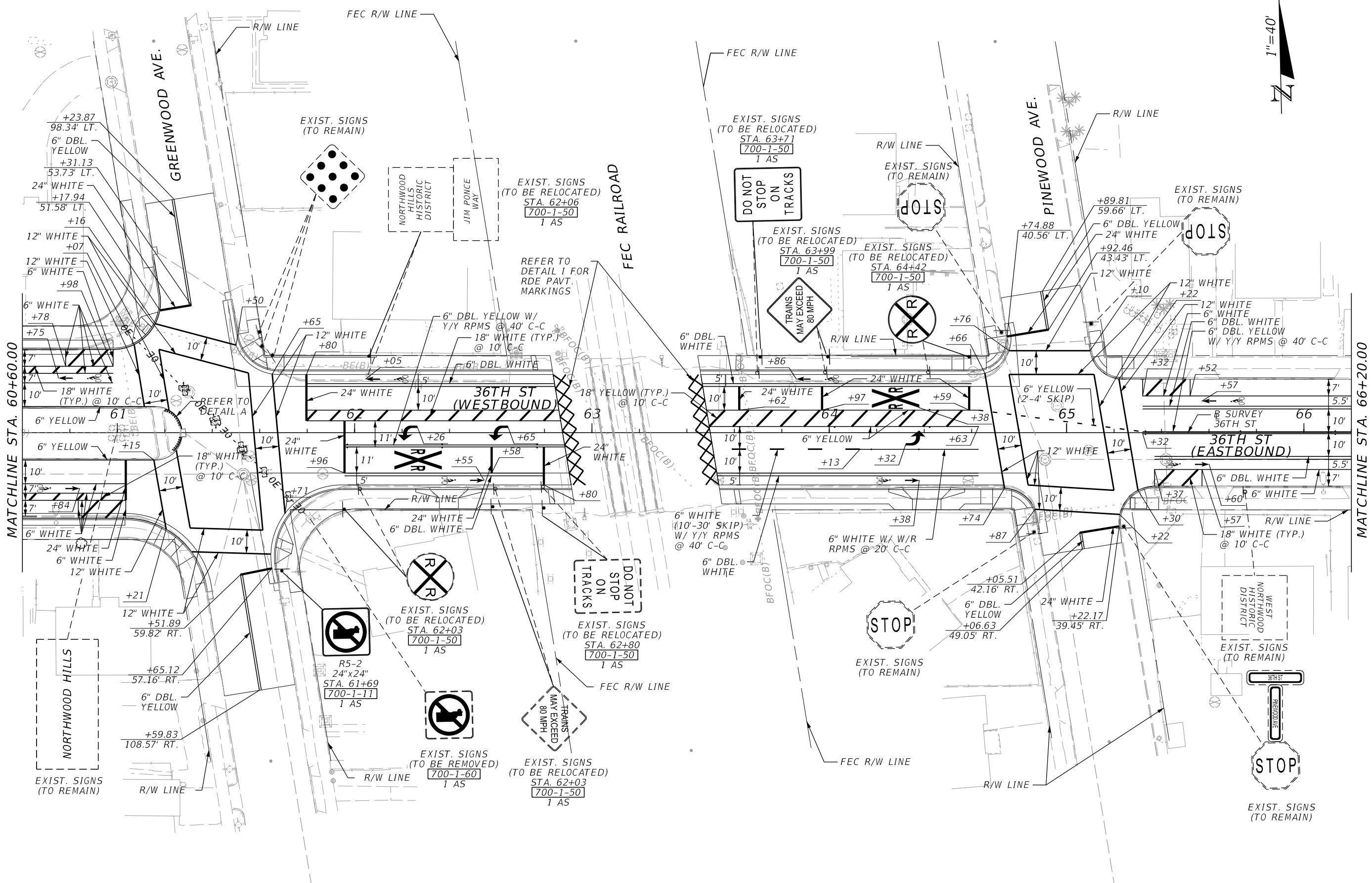
EXIST. SIGNS
 (TO BE REMOVED)
 700-1-60
 1 AS

REVISIONS				ENGINEER OF RECORD		STATE OF FLORIDA DEPARTMENT OF TRANSPORTATION			SHEET NO.
DATE	DESCRIPTION	DATE	DESCRIPTION			ROAD NO.	COUNTY	FINANCIAL PROJECT ID	
				SCOTT T. EDGAR, P.E. LICENSE NUMBER 70120 ERDMAN ANTHONY OF FLORIDA, INC. 5405 OKEECHOBEE BLVD, SUITE 200 WEST PALM BEACH, FL 33417		36TH ST	PALM BEACH	441570-1-52-01	S-8

**SIGNING AND PAVEMENT
MARKING PLAN**

THE OFFICIAL RECORD OF THIS SHEET IS THE ELECTRONIC FILE DIGITALLY SIGNED AND SEALED UNDER RULE 61G15-23.004, F.A.C.

10/25/2022 9:21:52 AM LeL N:\600335-00-36\HStreet\VDOT\44157015201\SigningAndMarking\PLANS\01.dgn

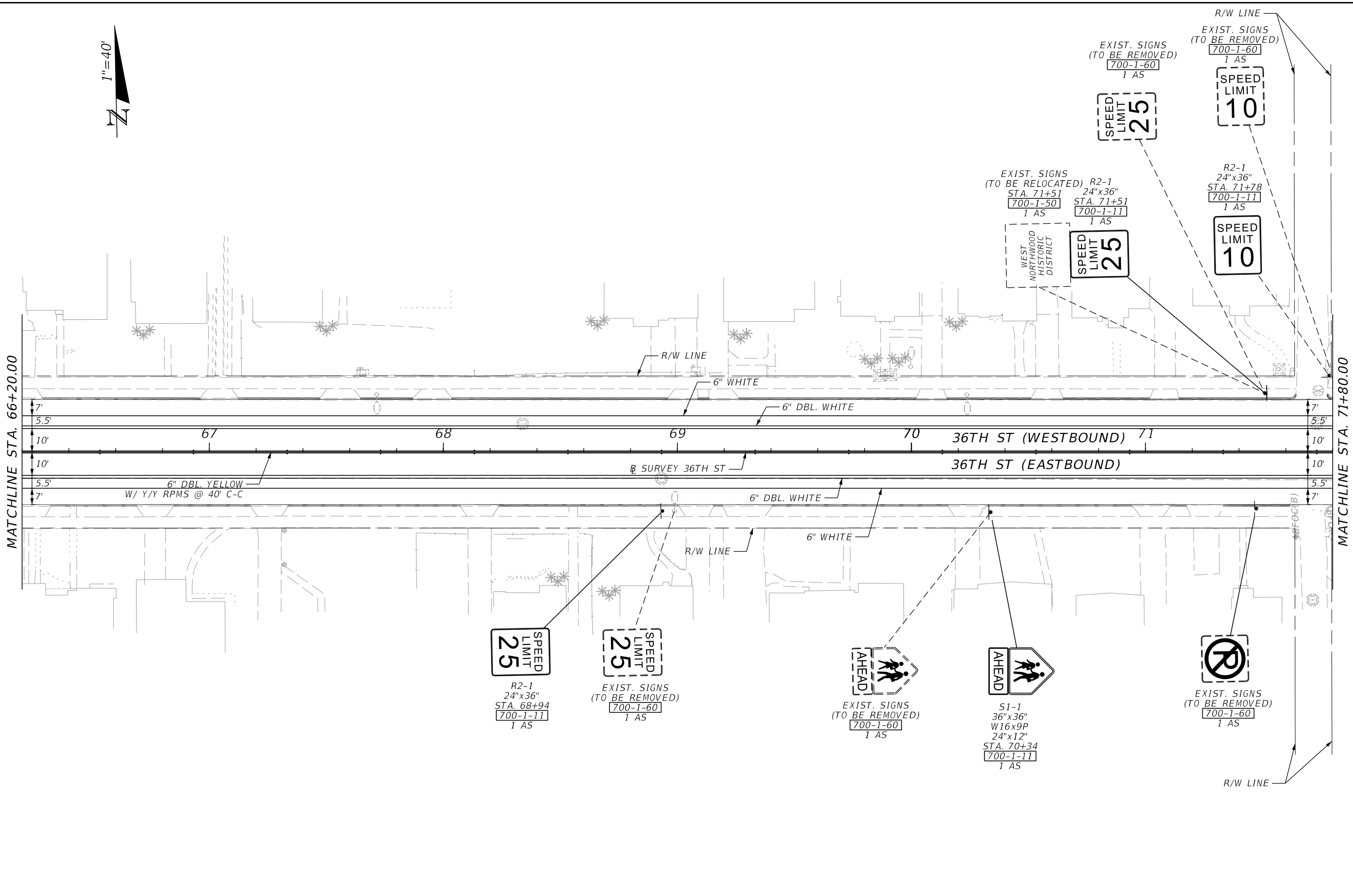


MATCHLINE STA. 60+60.00

MATCHLINE STA. 66+20.00

REVISIONS		ENGINEER OF RECORD		STATE OF FLORIDA DEPARTMENT OF TRANSPORTATION			SHEET NO.
DATE	DESCRIPTION	DATE	DESCRIPTION	ROAD NO.	COUNTY	FINANCIAL PROJECT ID	
				SCOTT T. EDGAR, P.E. LICENSE NUMBER 70120 ERDMAN ANTHONY OF FLORIDA, INC. 5405 OKEECHOBEE BLVD, SUITE 200 WEST PALM BEACH, FL 33417	36TH ST	PALM BEACH	441570-1-52-01
SIGNING AND PAVEMENT MARKING PLAN							S-9

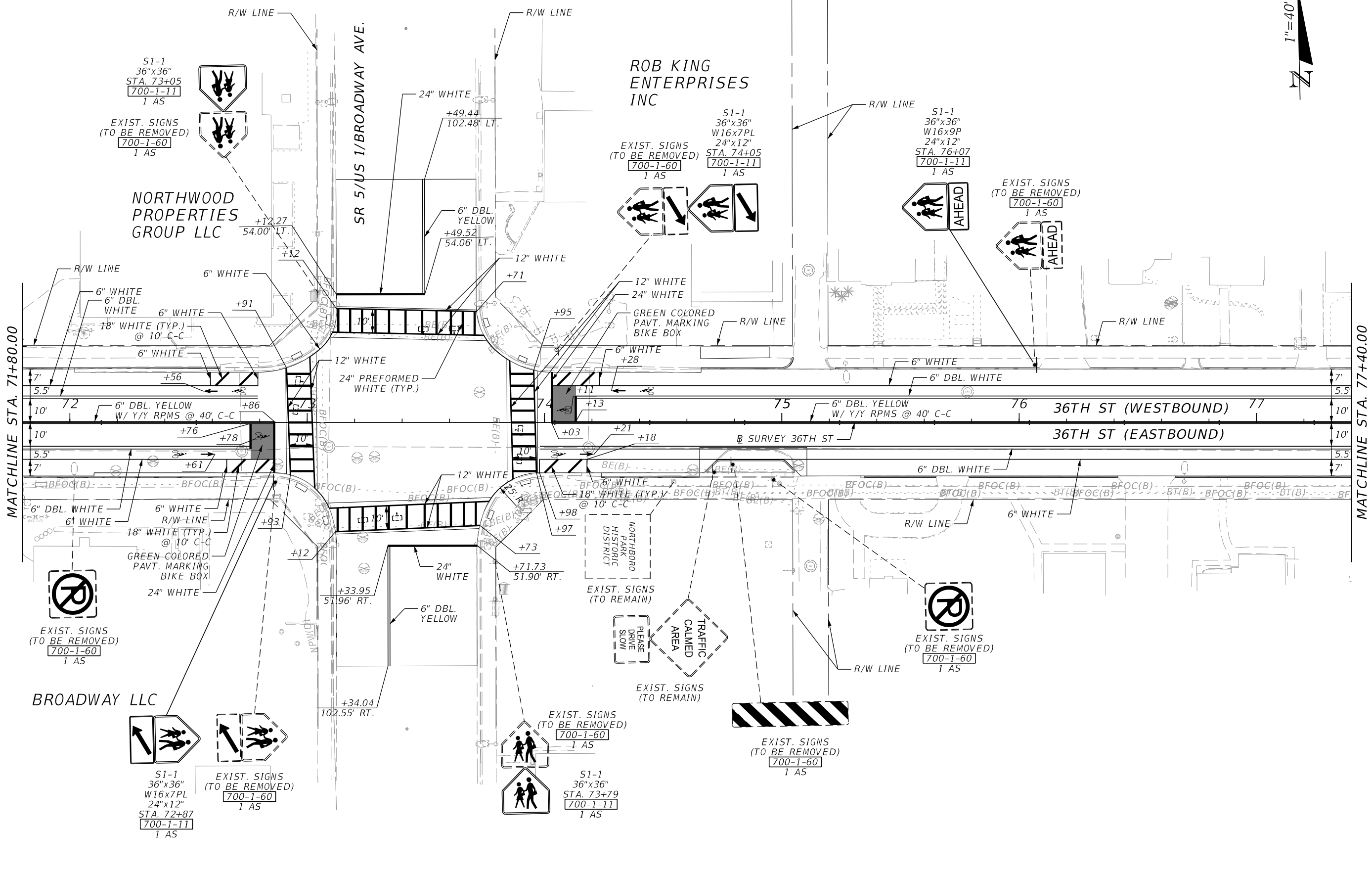
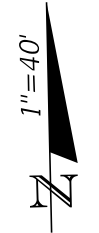
THE OFFICIAL RECORD OF THIS SHEET IS THE ELECTRONIC FILE DIGITALLY SIGNED AND SEALED UNDER RULE 61G15-23.004, F.A.C.



10/25/2022 9:21:52 AM LeL N:\600335-00-36thStreet\FDOT\44157015201\SigningAndMarking\PLANS\01.dgn

THE OFFICIAL RECORD OF THIS SHEET IS THE ELECTRONIC FILE DIGITALLY SIGNED AND SEALED UNDER RULE 61G15-23.004, F.A.C.

REVISIONS				ENGINEER OF RECORD		STATE OF FLORIDA DEPARTMENT OF TRANSPORTATION			SHEET NO.
DATE	DESCRIPTION	DATE	DESCRIPTION			ROAD NO.	COUNTY	FINANCIAL PROJECT ID	
				SCOTT T. EDGAR, P.E. LICENSE NUMBER 70120 ERDMAN ANTHONY OF FLORIDA, INC. 5405 OKEECHOBEE BLVD, SUITE 200 WEST PALM BEACH, FL 33417		36TH ST	PALM BEACH	441570-1-52-01	
SIGNING AND PAVEMENT MARKING PLAN									S-10



MATCHLINE STA. 71+80.00

MATCHLINE STA. 77+40.00

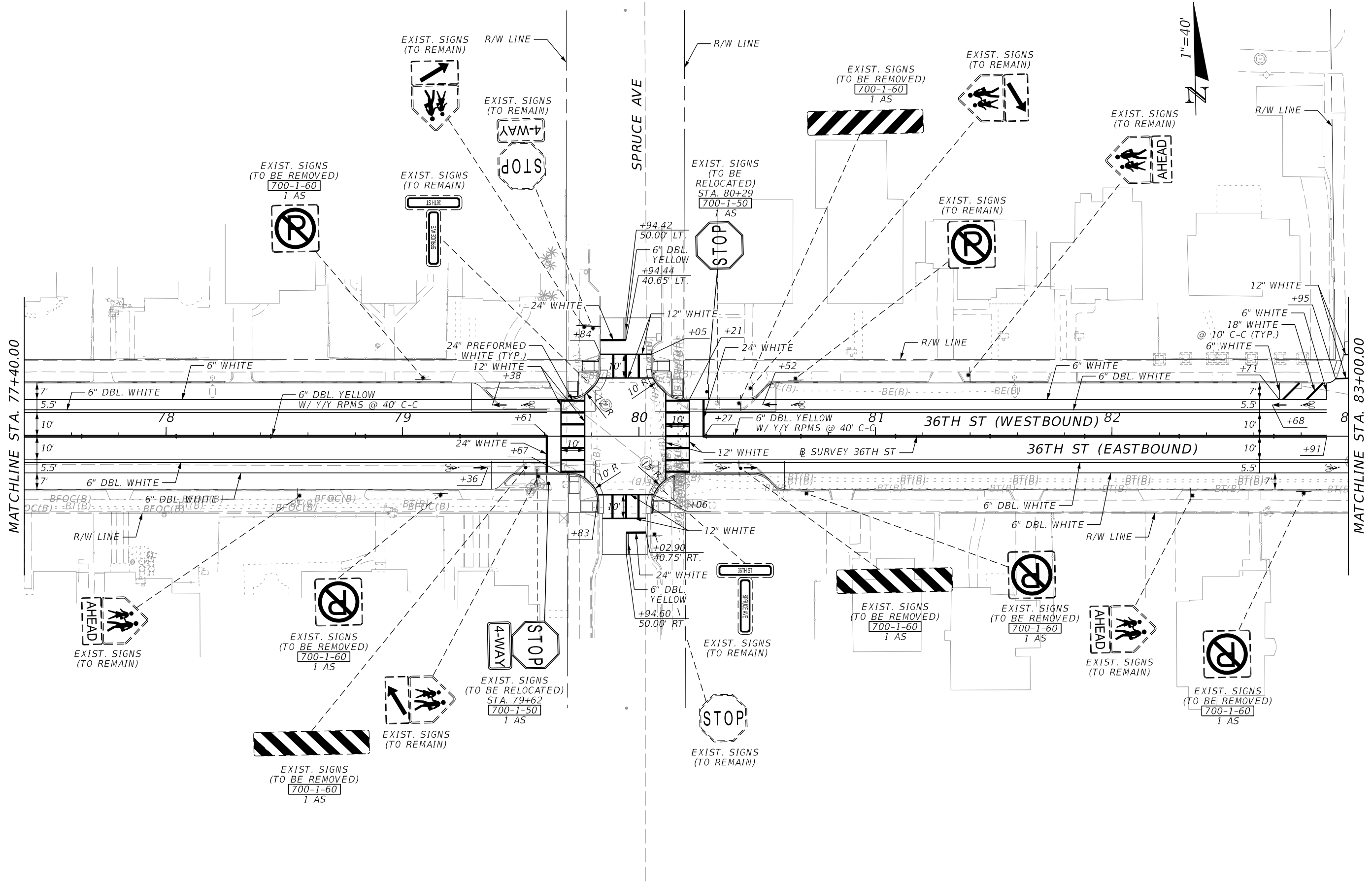
10/25/2022 9:21:53 AM LeL N:\60335-00-36thStreet\FDOT\44157015201\SigningAndMarking\PLANS\PO1.dgn

THE OFFICIAL RECORD OF THIS SHEET IS THE ELECTRONIC FILE DIGITALLY SIGNED AND SEALED UNDER RULE 61G15-23.004, F.A.C.

REVISIONS		ENGINEER OF RECORD		STATE OF FLORIDA DEPARTMENT OF TRANSPORTATION			SHEET NO.
DATE	DESCRIPTION	DATE	DESCRIPTION	ROAD NO.	COUNTY	FINANCIAL PROJECT ID	
			SCOTT T. EDGAR, P.E. LICENSE NUMBER 70120 ERDMAN ANTHONY OF FLORIDA, INC. 5405 OKEECHOBEE BLVD, SUITE 200 WEST PALM BEACH, FL 33417	36TH ST	PALM BEACH	441570-1-52-01	S-II

**SIGNING AND PAVEMENT
MARKING PLAN**

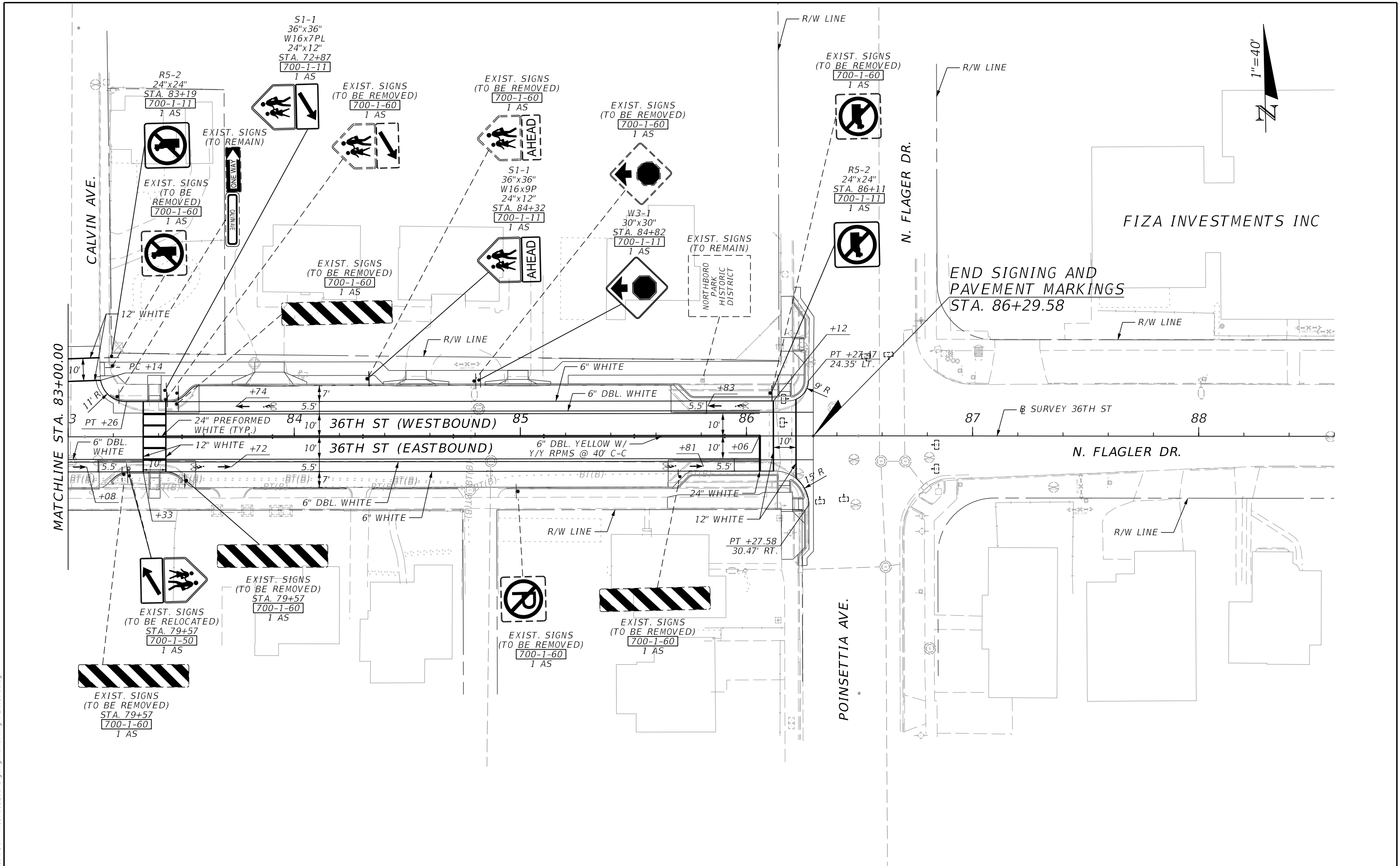
10/25/2022 9:21:53 AM LeL N:\600335-00-36thStreet\FDOT\44157015201\SigningAndMarking\PLANS\01.dgn



REVISIONS		ENGINEER OF RECORD		STATE OF FLORIDA DEPARTMENT OF TRANSPORTATION			SHEET NO.
DATE	DESCRIPTION	DATE	DESCRIPTION	ROAD NO.	COUNTY	FINANCIAL PROJECT ID	
			SCOTT T. EDGAR, P.E. LICENSE NUMBER 70120 ERDMAN ANTHONY OF FLORIDA, INC. 5405 OKEECHOBEE BLVD, SUITE 200 WEST PALM BEACH, FL 33417	36TH ST	PALM BEACH	441570-1-52-01	
SIGNING AND PAVEMENT MARKING PLAN							S-12

THE OFFICIAL RECORD OF THIS SHEET IS THE ELECTRONIC FILE DIGITALLY SIGNED AND SEALED UNDER RULE 61G15-23.004, F.A.C.

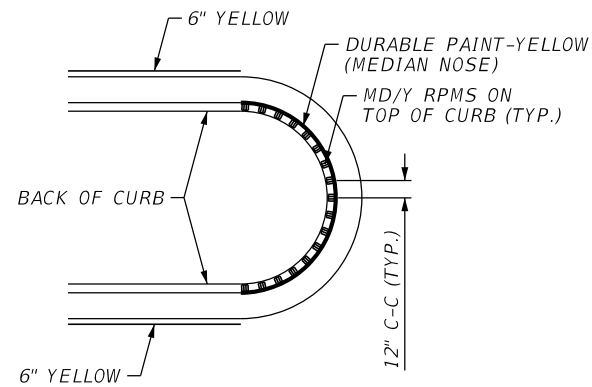
10/25/2022 9:21:54 AM LeL N:\600335-00-36thStreet\FDOT\44157015201\SigningAndMarking\PLANS\PO1.dgn



REVISIONS		ENGINEER OF RECORD		STATE OF FLORIDA DEPARTMENT OF TRANSPORTATION			SHEET NO.
DATE	DESCRIPTION	DATE	DESCRIPTION	ROAD NO.	COUNTY	FINANCIAL PROJECT ID	
			SCOTT T. EDGAR, P.E. LICENSE NUMBER 70120 ERDMAN ANTHONY OF FLORIDA, INC. 5405 OKEECHOBEE BLVD, SUITE 200 WEST PALM BEACH, FL 33417	36TH ST	PALM BEACH	441570-1-52-01	S-13

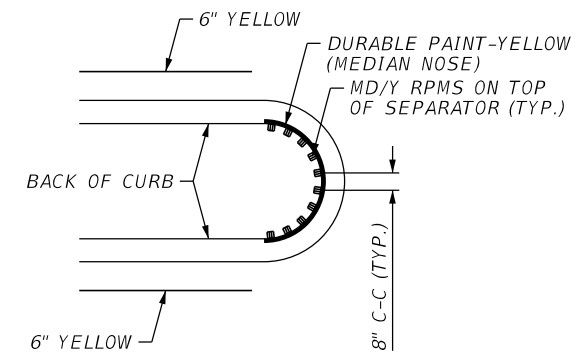
**SIGNING AND PAVEMENT
MARKING PLAN**

THE OFFICIAL RECORD OF THIS SHEET IS THE ELECTRONIC FILE DIGITALLY SIGNED AND SEALED UNDER RULE 61G15-23.004, F.A.C.



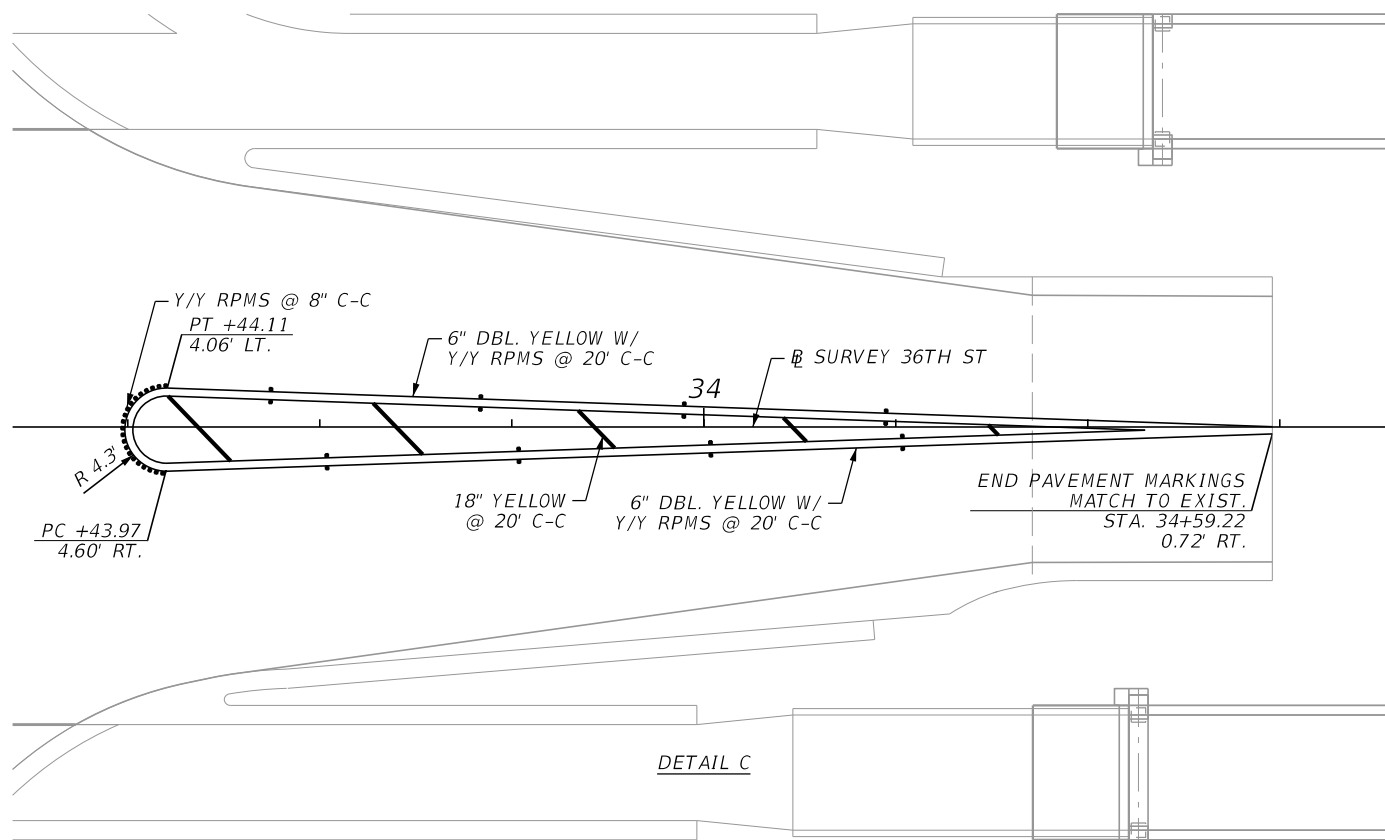
DETAIL A

RPM PLACEMENT AT MEDIAN OPENING WITH TYPE "D" OR TYPE "F" CURB

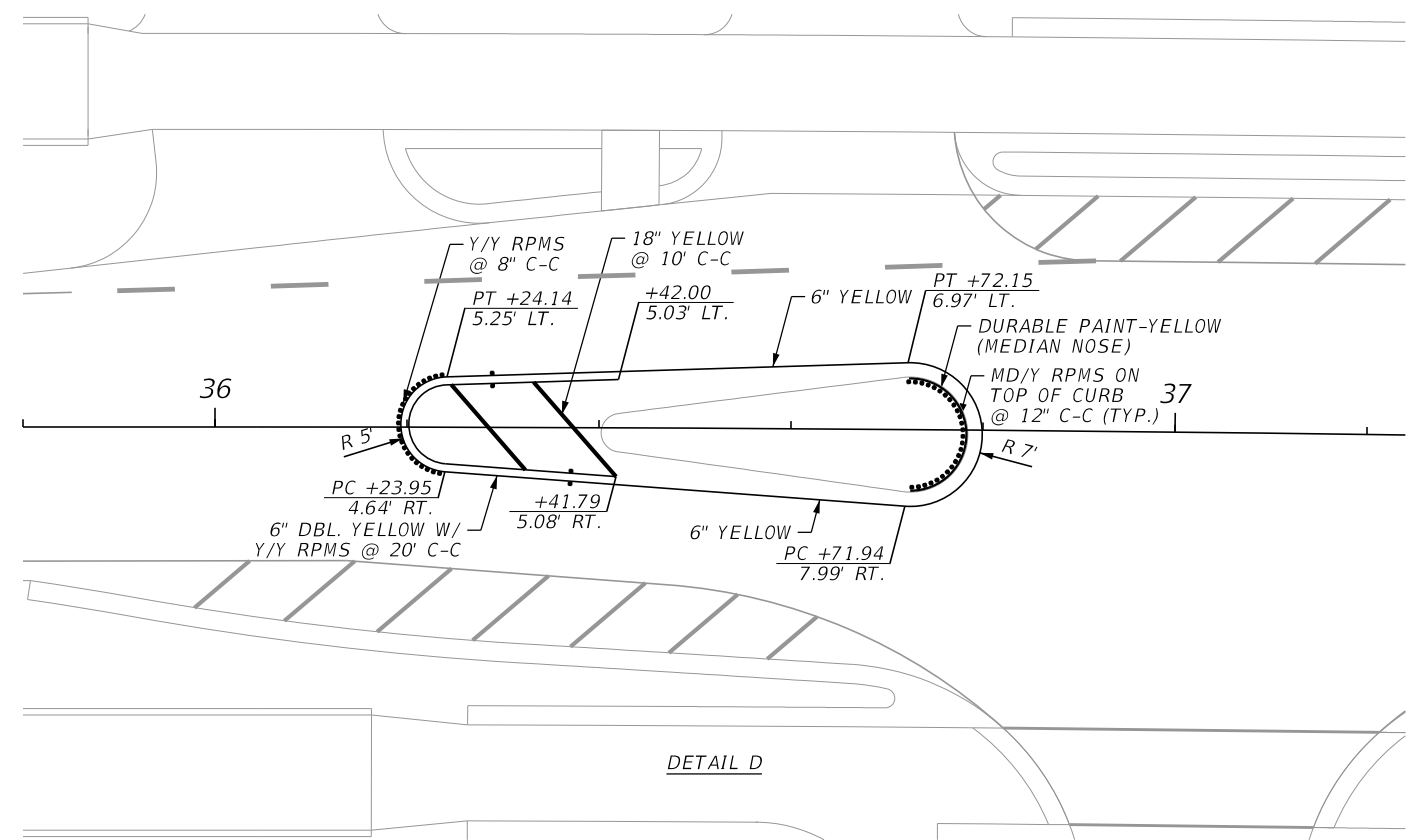


DETAIL B

RPM PLACEMENT AT TRAFFIC SEPARATOR MEDIAN OPENING



DETAIL C



DETAIL D

10/25/2022 9:21:55 AM LeL N:\60335-00-36thStreet\FDOT\44157015201\SigningAndMarking_SPDTSPO1.dgn

REVISIONS			
DATE	DESCRIPTION	DATE	DESCRIPTION

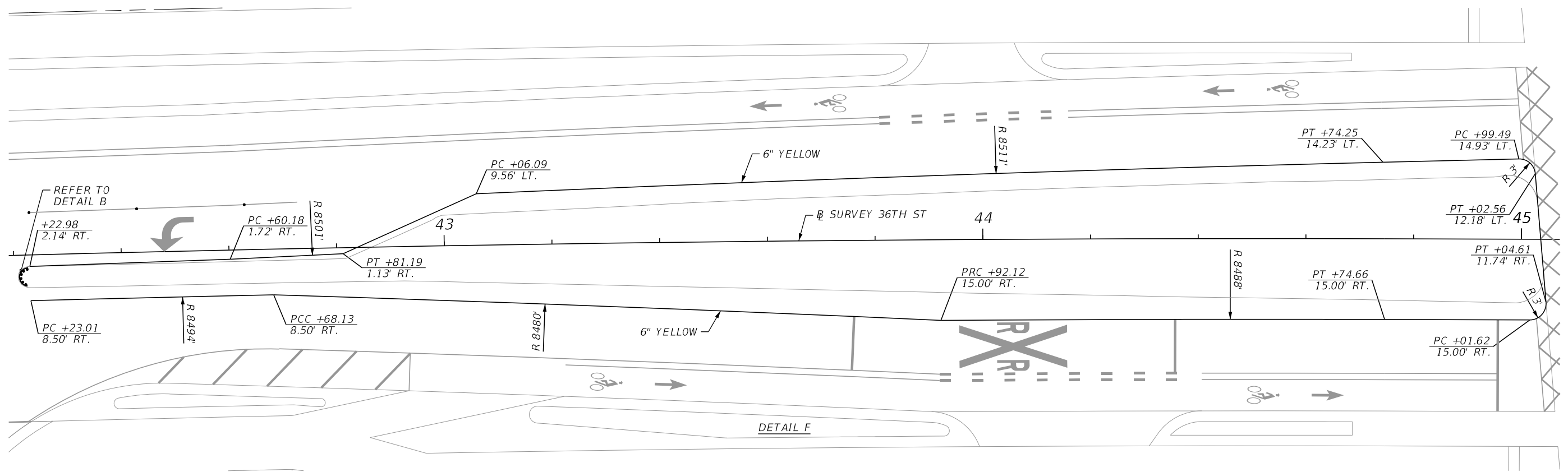
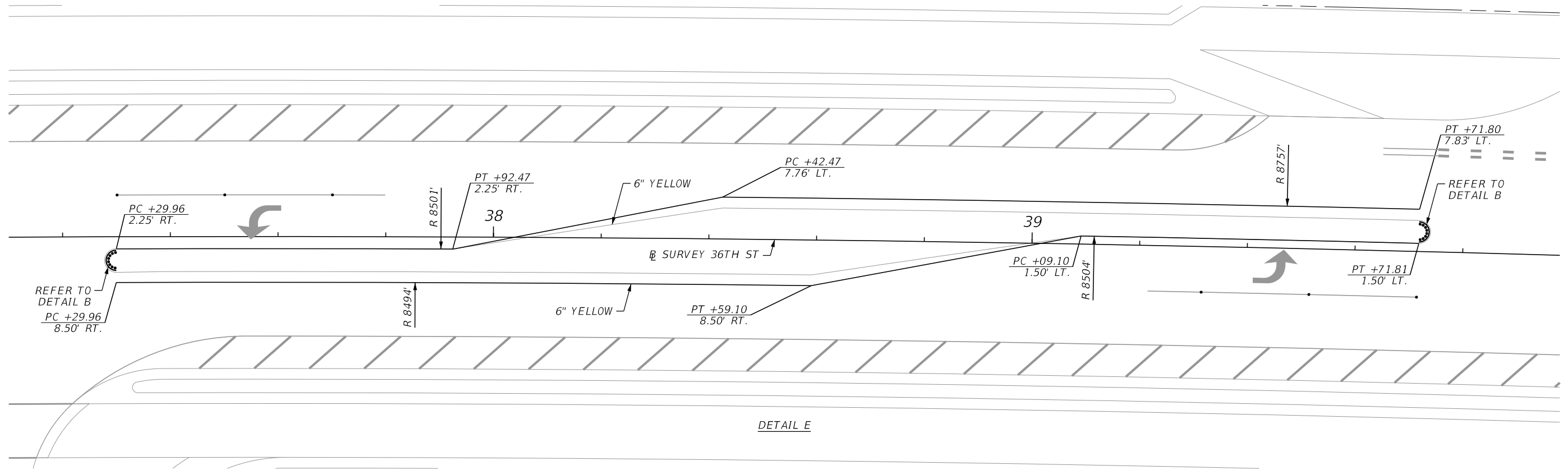
ENGINEER OF RECORD
 SCOTT T. EDGAR, P.E.
 LICENSE NUMBER 70120
 ERDMAN ANTHONY OF FLORIDA, INC.
 5405 OKEECHOBEE BLVD, SUITE 200
 WEST PALM BEACH, FL 33417

STATE OF FLORIDA DEPARTMENT OF TRANSPORTATION		
ROAD NO.	COUNTY	FINANCIAL PROJECT ID
36TH ST	PALM BEACH	441570-1-52-01

SPECIAL DETAILS

SHEET NO.
S-14

THE OFFICIAL RECORD OF THIS SHEET IS THE ELECTRONIC FILE DIGITALLY SIGNED AND SEALED UNDER RULE 61G15-23.004, F.A.C.



10/25/2022 9:21:55 AM LeL N:\60335-00-36\InStreet\FD01\44157015201\SigningAndMarking_SPDTSPO1.dgn

REVISIONS			
DATE	DESCRIPTION	DATE	DESCRIPTION

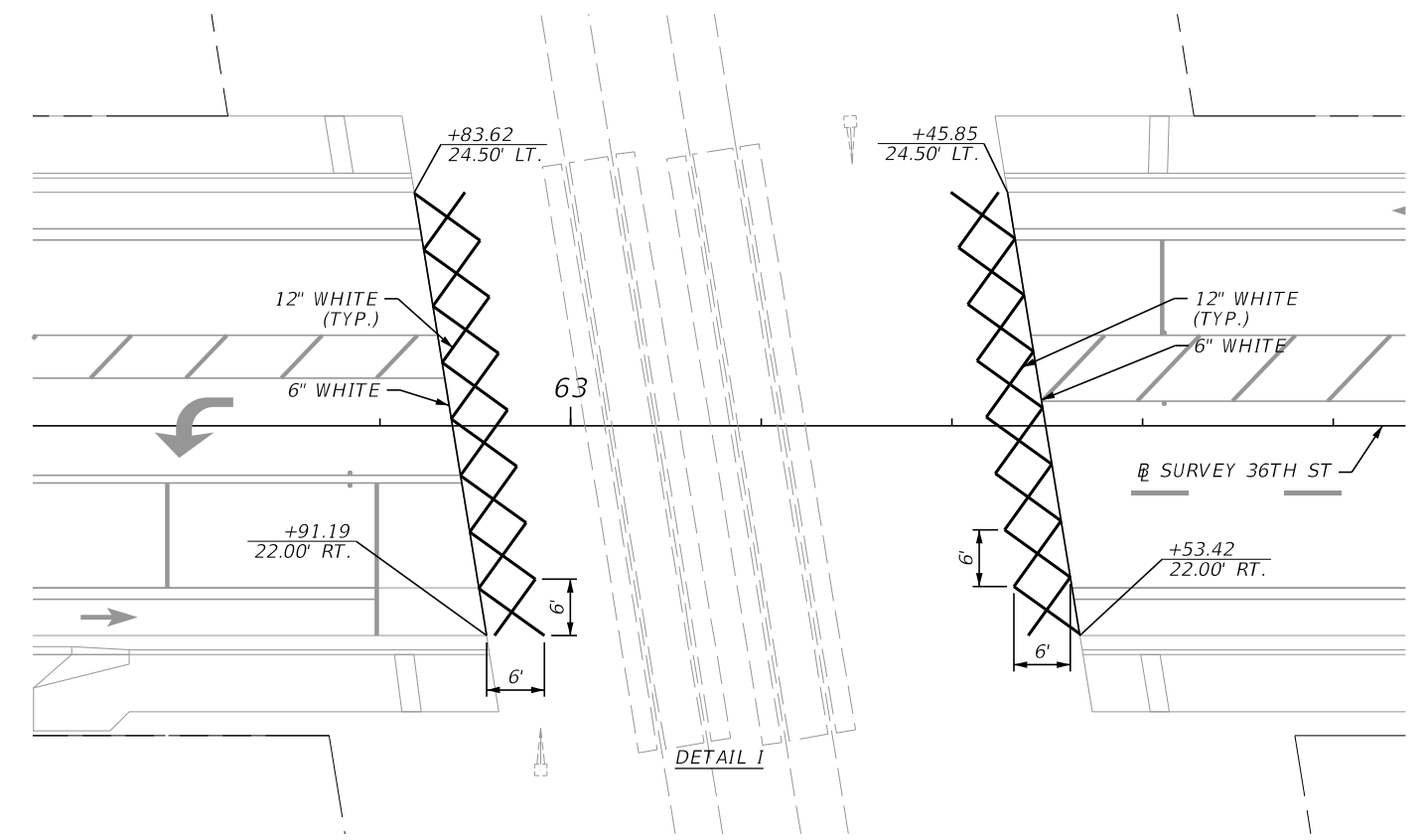
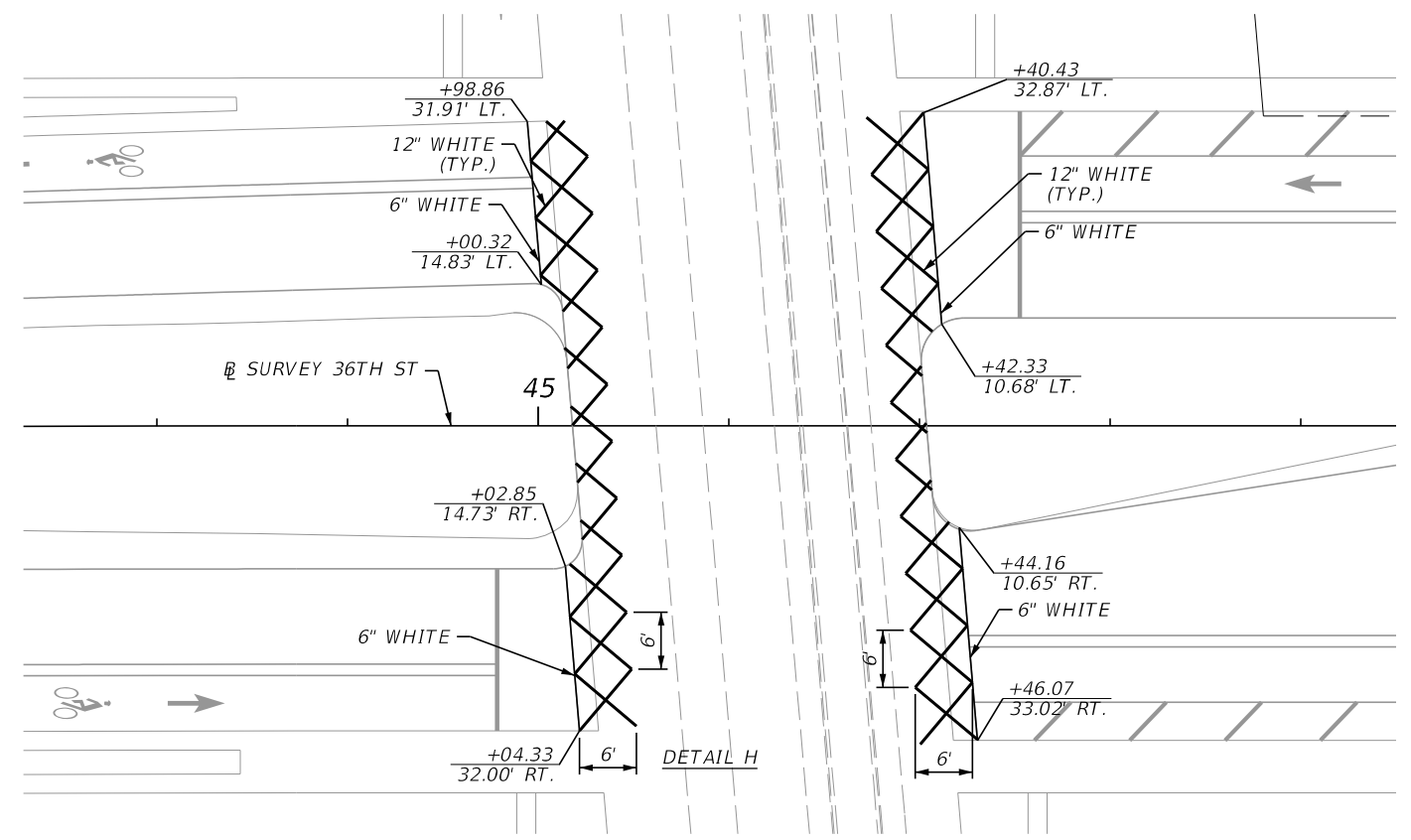
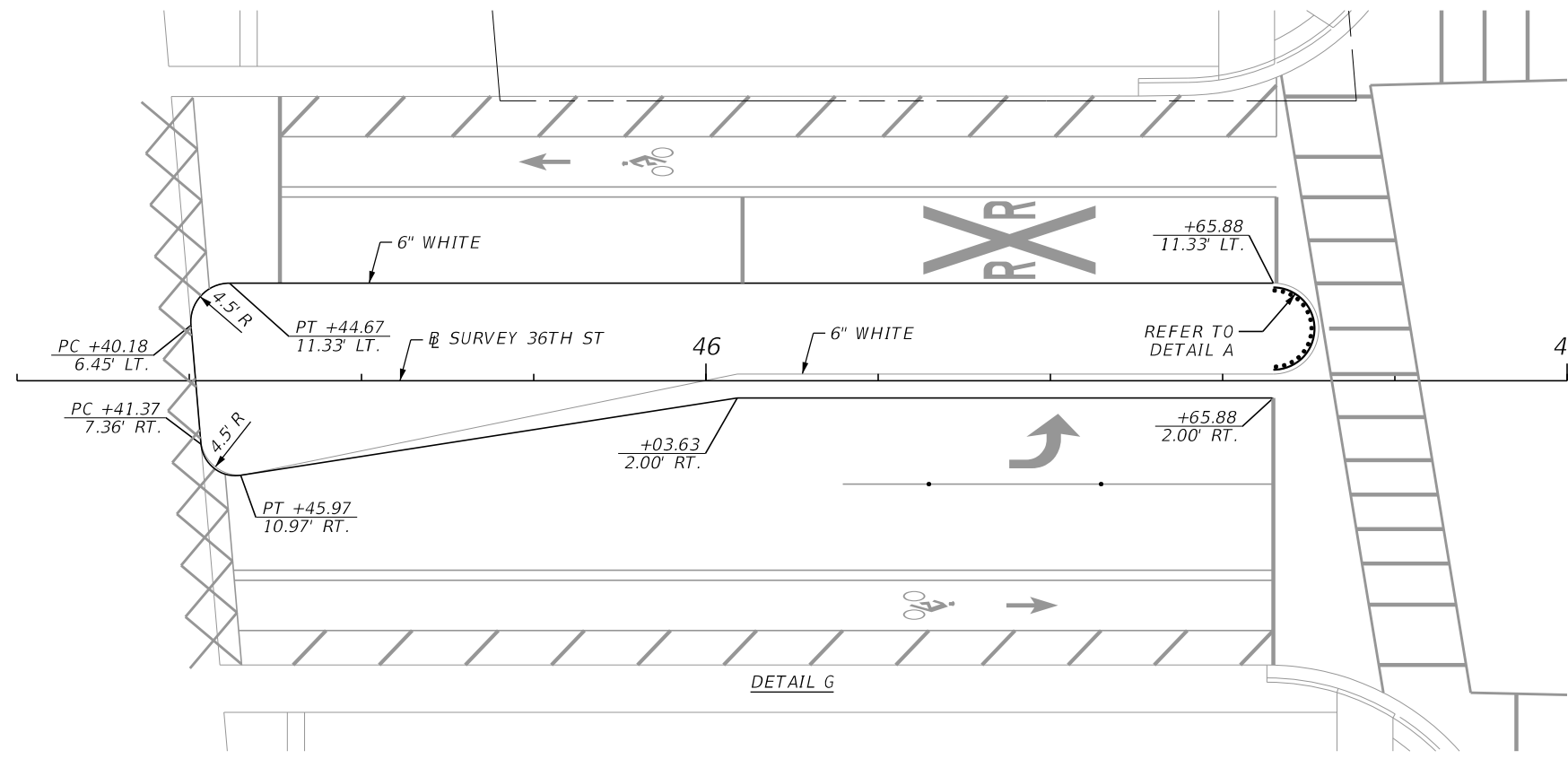
ENGINEER OF RECORD
 SCOTT T. EDGAR, P.E.
 LICENSE NUMBER 70120
 ERDMAN ANTHONY OF FLORIDA, INC.
 5405 OKEECHOBEE BLVD, SUITE 200
 WEST PALM BEACH, FL 33417

STATE OF FLORIDA DEPARTMENT OF TRANSPORTATION		
ROAD NO.	COUNTY	FINANCIAL PROJECT ID
36TH ST	PALM BEACH	441570-1-52-01

SPECIAL DETAILS

SHEET NO.
S-15

THE OFFICIAL RECORD OF THIS SHEET IS THE ELECTRONIC FILE DIGITALLY SIGNED AND SEALED UNDER RULE 61G15-23.004, F.A.C.



10/25/2022 9:21:56 AM LeL N:\60335-00-36thStreet\FDOT\44157015201\SigningAndMarking_SPDTSPO1.dgn

REVISIONS			
DATE	DESCRIPTION	DATE	DESCRIPTION

ENGINEER OF RECORD
 SCOTT T. EDGAR, P.E.
 LICENSE NUMBER 70120
 ERDMAN ANTHONY OF FLORIDA, INC.
 5405 OKEECHOBEE BLVD, SUITE 200
 WEST PALM BEACH, FL 33417

STATE OF FLORIDA DEPARTMENT OF TRANSPORTATION		
ROAD NO.	COUNTY	FINANCIAL PROJECT ID
36TH ST	PALM BEACH	441570-1-52-01

SPECIAL DETAILS

SHEET NO.
 S-16

THE OFFICIAL RECORD OF THIS SHEET IS THE ELECTRONIC FILE DIGITALLY SIGNED AND SEALED UNDER RULE 61G15-23.004, F.A.C.

