

# BECOMING A POLL WORKER

Thank you for stepping up to help ensure our elections are free and fair! Poll workers are in desperate need around the country, and play a vital role in helping voters exercise their rights. This brief guide will walk you through the process of registering to become a poll worker. Every state and every county is a little bit different, but it is the same basic process: ensure you meet the qualifications, register with them, and they will reach out with details about training and/or further requirements. **Ready to get started?**



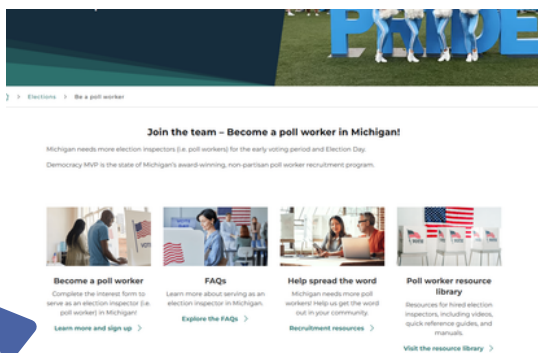
## Step 1 - Find Your State

On the Election Service Initiative page ([www.country1st.com/poll\\_workers](http://www.country1st.com/poll_workers)), find your state either on the map or in the dropdown (if viewing on mobile). When you select your state, the basic requirements and qualifications will be shown. Verify that you meet the basic requirements and qualifications.



## Step 2 - Sign Up

Once you have verified that you meet the basic requirements, click the “Learn More” button. Depending on your state and its processes for poll worker registration (remember, everyone is different!), you may be taken directly to the sign-up form or to a page with contact information for your county board of elections. Explore that page to determine exactly how you need to register and with whom. Some states require you to register with the state board of elections, while others require you to register with your county. ***If you have questions about your state, it's best to reach out to your state or county board of elections.***



## Step 3 - Your State or County will be in Touch!

With whomever you registered with (your state or county), they will provide your official training so you can actually serve on election day. After you submit your registration, they'll be in touch with more information about attending and completing that training.

#### **Step 4 - What to Expect at Training**

Training is mandatory for all poll workers, but the format, length, and requirements will be different depending on your county and/or state. But all training will typically cover voter check-in procedures, machine setup, handling provisional ballots, and more. Your jurisdiction will provide specifics about what you need to bring, how long the training will be, whether it will be split up into different sessions, and what you need to do beforehand or bring with you. If you have specific questions, reach out to your county board of elections!

