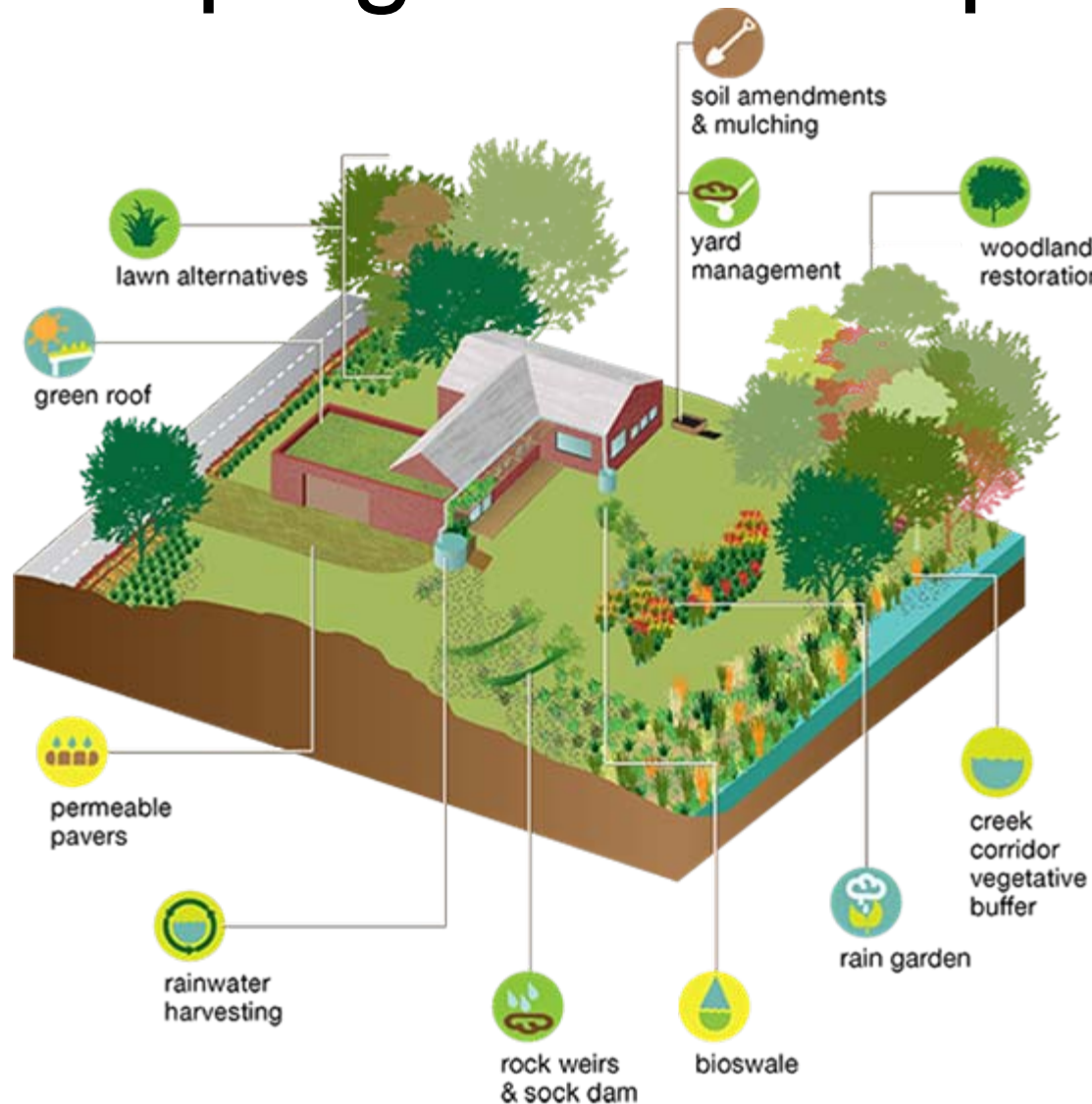


# RainScaping Cost Comparisons



# Permeable Paving per 100 square ft. Installed

Permeable Paver Costs			
	Basic	Better	Best
Permeable Paver - Material Prices	\$405 -\$486	\$474 -\$566	\$555 -\$635
Permeable Paver - Installation Cost	\$544 -\$919	\$854 -\$1,249	\$1,173 -\$1,695
Permeable Paver - Total	\$949 -\$1,404	\$1,328 -\$1,815	\$1,727 -\$2,330
Permeable Paver - Total Average Cost per square foot	<b>\$15.00</b>	<b>\$19.00</b>	<b>\$23.54</b>



# Rainwater Cisterns

*Installation not included*

MATERIAL	COST, Small System	COST, Large system
galvanized steel	\$225 for 200 gallons	\$950 for 2000 gallons
polyethylene	\$160 for 165 gallons	\$1100 for 1800 gallons
fiberglass	\$660 for 350 gallons	\$10,000 for 10,000 gallons
fiberglass/steel composite	\$300 for 300 gallons	\$10,000 for 5000 gallons
aluminum	Cost prohibitive for water use	Cost prohibitive for water use



# 55-gallon Rain Barrel

*Installation not included*

<i>ITEM</i>		<i>COST</i>
Rain Barrel with sealed top		\$120
Overflow Kit/Runoff pipe		\$35
Rain Diverter		\$18
Soaker Hose		\$21
Linking Kit		\$12
Spigot, if not supplied		\$5
Additional Guttering		\$5
<b>TOTAL ESTIMATED COST:</b>		<b>\$216</b>

# Residential Rain Garden and/or Bioswale



*10 x 15 ft., dug 6 in. deep, no drains, use of existing soil*

<b>Size and Installation</b>	<b>Cost per Sq. Ft.</b>	<b>Total Cost</b>
150 sq. ft. self-installation	\$3-\$8.25/sq. ft.	\$450 - \$1,237.50
150 sq. ft. Installed	\$12-\$19.25/sq. ft.	\$1,800 - \$2,887.50



# Turf Conversion to Perennial and/or Shrub Planting Bed

*Per 150 sq. ft. (10 x 15 ft)*



Size and Installation	Cost per Sq. Ft.	Total Cost
150 sq. ft. self-installation	\$3-\$8.25/sq. ft.	\$450 - \$1,237.50
150 sq. ft. Installed	\$10-\$17.25/sq. ft.	\$1,500 - \$2,587.50