

23 years looking after the
KIMBERLEY

Annual Report 2019





Chairperson's Report

Kate Golson, Chairperson

It gives me great pleasure to write that, in 2019, EK's financial fortunes turned around in earnest after some grim lean years for us and Australian conservation efforts generally, a major theme in my reports of recent times.

While the dire situation of federal environmental funding remains, the Kimberley Nature Project (KNP) has successfully secured large multi-year grants through Google and LotteryWest, among others. With these funds, EK has recruited three new ecologists, all with valuable Kimberley experience, and KNP's work has extended into such areas as wetlands management and protection.

As well, after *four* years of presentations about the Kimberley environment to big donors and interested audiences in Melbourne and Sydney, this year, donations to protect the Fitzroy River from encroaching large-scale irrigation, and for the No Fracking campaign, increased substantially.

With our sails spread wide once again, I would like to acknowledge the achievements and contributions of the KNP team and director Martin's tireless efforts and strategic leadership.

Finance Officer Christine Elsasser has again most competently delivered the organisation's financial reports, which our auditor commends for their thoroughness and attention to detail.

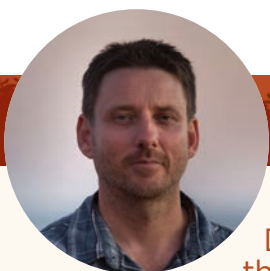
In late July at our Annual Art Auction (AAA), we acknowledged and thanked all the artists, musicians and organisers who have contributed to the 16 events, and especially those from the earliest years. Coordinator Tess Mossop and a dedicated network of volunteers ensured Auction 2019 was a night to be enjoyed by all, locals and visitors alike. Many agreed that the art was of a particularly high standard.

Along with July's third Concert for the Kimberley, and a very successful art raffle, with tickets selling like hot cakes, the AAA continues to be a major engine room of our self-generated funds.

At the 2018 AGM, we welcomed new Board members Bart Pigram, Richard Hosking and Rowena Puertollano. They have brought fresh perspectives and made valuable contributions to many of our discussions.

Aside from continuing to support and strengthen the organisation through strategic decision-making and fundraising, this year the Board has given priority to improving our governance systems and, more recently, to exploring social enterprise opportunities.

All the best, Kate



Director's Report

Martin Pritchard, Director

Despite ever-increasing knowledge about how special the Kimberley is, the push to industrialise continues. Oil and gas fracking, industrial scale irrigation, mining, new ports and port infrastructure, and landclearing, have all been live issues this year.

Governments and big business have yet to twig that the Kimberley's greatest assets are its globally significant intact ecosystems and the Aboriginal custodians of the land, and their culture. In contrast, people from all over the globe come here to experience something that they cannot find anywhere else, and they pay big dollars for the experience. Fortunately, people from the Eastern States also care deeply about the Kimberley and are increasingly supporting our work to protect it. This could not be more timely — it's a race to protect the Kimberley, before it's too late.

Our task is to shine a light on destructive developments and build awareness and pressure to force decision-makers to do the right thing by the natural environment. We are also bringing awareness of and support for the 'New Economy'; this year we worked with key partners, Pew Charitable Trust to deliver a groundbreaking report by UniSA on the questionable economics of irrigated agriculture, contrasted with industries like carbon farming, Bush Products, cultural-tourism, traditional medicine and arts and culture. The report highlights the shocking disparity in the level of government investment in them — less than \$1 million compared to over half a billion dollars for damaging, old economy industries such as irrigated agriculture. There is a long way to go.

The other vital aspect of our work is undertaken by the Kimberley Nature Project (KNP) Team. Under Malcom and

Louise's leadership, we've not only managed to thrive in a lean fiscal environment but, through innovative thinking, we've succeeded in gaining a Google grant to work with the Karajarri Rangers, and a significant Lotterywest grant to work on wetlands. We're also consultants for the National Environmental Science Programme. We're very fortunate to have such a strong team working with nine Aboriginal Ranger groups.

The EK Board under Kate's leadership has continued in its quest to govern in the best, most efficient and responsible way. I have continued to receive high-level support and counsel from Kate, and consider that we are very fortunate to have her as our Chair.

As Kate has mentioned in her report, our forays on the East Coast have shown that, when presented with the problems we are facing in the Kimberley, like fracking and industrial agriculture, people want to support our work. We thank all donors for their support as well as our invaluable volunteers, members, supporters and partner organisations. We are incredibly lucky to have Christine and Tess to keep us on track with our finances, fundraising and community engagement.

With all of you, we've held back the tide of industrialisation of the Kimberley and we'll continue our work to make sure that we leave it in a better state for future generations.

Campaign Report

Martin Pritchard, Director

State and Federal government leadership on tackling climate change continues to be woefully inadequate, no matter what party is in. This is reflected in bad policy decisions such as the one by the McGowan Government to open up the Kimberley to one of the dirtiest forms of fossil fuel development – fracking. The reaction in Broome was strong, with people protesting on the beaches.

There is clear objection by the majority of the community in the Kimberley and across the country to fracking, as well as from WA Unions, the State Executive of the Labor Party and government MPs including Kimberley MLA, Josie Farrer. Traditional Owners, Yawuru, Nyul Nyul, Nyikina Mangala and Walmajarri, all declared their opposition to fracking on their country, yet the power of the fossil fuel industry was too much for the McGowan Government. Despite this enormous setback, the push against fracking resulted in a ban on fracking on the Dampier Peninsula and Native Title holders have veto rights on the production of gas through fracking. A report on the implications of fracking the Canning Basin for Australia's emissions targets shows that if the resource were fully exploited, it would emit twice the carbon pollution of Australia's Paris Agreement energy sector budget. We cannot let this destructive industry happen in the Kimberley.

Buccaneer Archipelago – a win

A marine park in the Buccaneer Archipelago was a commitment we secured prior to the last state election. This year we mounted a campaign with our partners in the 'Kimberley – Like Nowhere Else' alliance to have the pristine Adele Island, and Beagle and Mavis Reefs, included in the park. Over 1,800 people called on the Minister for the Environment to include them, and he confirmed that they will be included when the boundaries of the park are announced in 2019.

Protecting the Fitzroy and Margaret Rivers

Pressure on the Fitzroy River and its tributary the Margaret continued to mount this year. The formation of the Martuwarra Fitzroy River Council by Traditional Owner groups led to a strong statement calling for the protection of the River. The EPA responded to our call for them to release the Scoping Document for the proposal by the owners of Gogo pastoral lease to take 50 billion litres a year out of the Margaret River, and we received the document. The proposal laid out the possibility of growing cotton as well as fodder for cattle. Over 900 submissions went in, objecting to the proposal. Then followed Gina Rinehart's Hancock Agriculture, proposing to take 325 billion litres a year out of the Fitzroy River system to feed cattle. This proposal came after the deaths of 46 critically endangered sawfish on Ms Rinehart's Liveringa pastoral lease in December 2018. We broke the story on ABC and our freedom of information application showed that the Department of Primary Industries and

Regional Development tried to bury the story. We didn't let it go and, with our campaign partners and over 7,000 signatures, we successfully pushed the WA Government to investigate the deaths and any linkages with the irrigation on Liveringa.

It's obvious that, despite the Labor Party's election promise to protect the Fitzroy, the next year is going to require a very hard push, and build of the campaign, if we are to be successful.

Illegal landclearing

Following a request for support we helped Traditional Owners with a blockade at the Yakka Munga pastoral lease, owned by a Chinese real estate conglomerate. Traditional Owners had found that illegal clearing had taken place at the site.

We went out and took drone footage and photos of the landclearing, and drove a joint campaign with Traditional Owners to stop the landclearing, prosecute the company and get the damaged land rehabilitated. We developed an online petition to the WA Minister for the Environment. Please follow our social media or go to our website to see where the story ends.



Nyikina Traditional Owners stopping illegal clearing at Yakka Munga pastoral lease

Looking ahead

We get reports coming in, almost weekly, of new exploration tenements, landclearing proposals, expansion of the cattle industry into unspoiled areas, and industrial infrastructure projects, which make it really clear that the environment here in the Kimberley is under siege. It's obvious that governments don't yet recognise the fundamental values that make the Kimberley different from any other part of the world, and that harmful developments are the result of this policy vacuum. In the meantime, with your support, we will work on getting strong environmental policies and protecting the Kimberley.



Kimberley Nature Projects

Malcolm Lindsay and Louise Beames,
Program Managers—Kimberley Nature Project



The Kimberley Nature Project (KNP) has had another successful year working with Aboriginal Rangers to protect, document and inspire others to protect the Kimberley's rich culture and biodiversity.

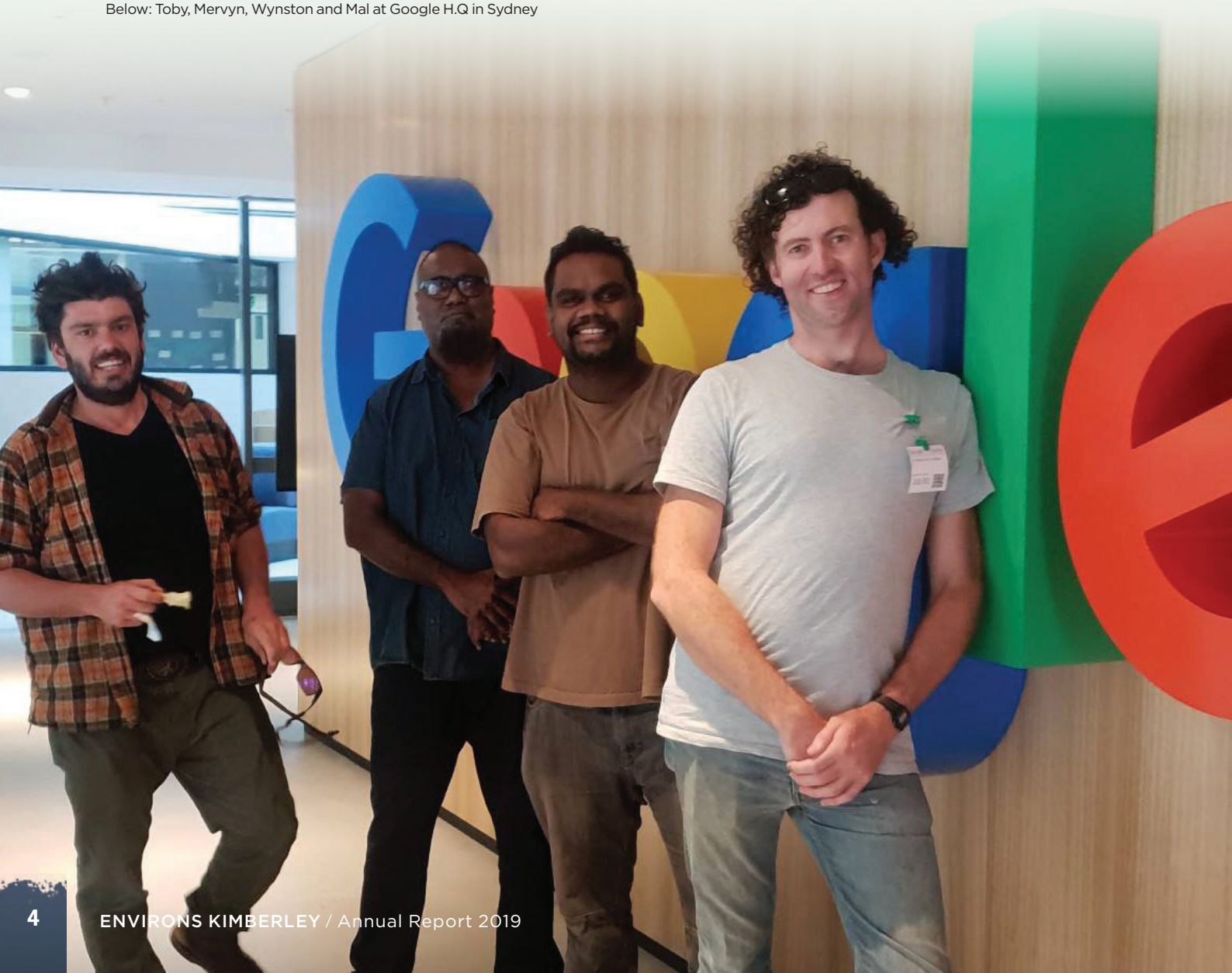


Working on the Bunuba Plants Book, 2019.

We have had a few changes to the KNP team over the year. Ayesha Moss had another baby, beautiful Anisa, and will re-join us in the new financial year. Nigel Jackett brought his extensive ecological knowledge to the team in 2019 and will continue to work for us in a part-time and casual capacity as he embarks on a PhD, researching Masked Owls.

Jess Miller is leaving the team to pursue her numerous interests, and we thank her for her great work, especially on the Bunuba Plant Book. Old hands Kylie Weatherall, Fiona West, Louise Beames and Malcolm Lindsay round out the great team. The new financial year will see new faces around the office as we are hiring new ecologists to work on our wetlands project.

Below: Toby, Mervyn, Wynston and Mal at Google H.Q in Sydney



Kimberley Nature Projects

Here's a snapshot of our activities, as per KNP's seven strategic goals

ON-GROUND CULTURAL NATURAL RESOURCE MANAGEMENT

We continue to reduce the negative impacts of weeds, fire and feral animals, especially within endangered Dampier Peninsula Monsoon Vine Thickets and central Kimberley wetlands on Bunuba country. Kylie Weatherall worked closely with the Yawuru, Nyul Nyul and Bardi Jawi women Rangers to undertake weeding, collect seed and propagate native species to revegetate degraded sites. We designed and received funding for a project to work with Karajarri Rangers and others to manage ecosystems, protect and enhance native food orchards and implement sustainable best practices such as savannah enrichment. We are in the process of working with our partners to select project sites and start training for this two-year project.

RESEARCH

The documented knowledge of Kimberley cultural ecosystems and species has been enhanced through a number of our projects this year. Malcolm Lindsay worked with the Karajarri Rangers to establish a three-year monitoring project with the National Environmental Science Program (NESP) Threatened Species Hub to research the relationship between fire and desert biodiversity. This includes using technological advances to enhance ranger activities, such as remote satellite weather stations to better inform Ranger fire management, through Google.org Impact Challenge funding. Nigel Jackett has been supporting rangers to better understand the distribution of Night Parrots through the Kimberley Night Parrot Working Group, and Bilby distribution through a NESP Northern Hub project. We have also commenced our three-year Kimberley Wetlands Project, working with six ranger groups to better document and manage their culturally and ecologically significant wetlands.

PARTNERSHIPS

Long-term, respectful and meaningful relationships are the backbone of all KNP projects and this year we continued to facilitate and develop healthy partnerships, working with and supporting nine ranger groups; Bardi Jawi, Nyul Nyul, Yawuru, Karajarri, Nyikina Mangala, Bunuba, Ngurrara, Gooniyandi and Kija; and another two through regional working groups: Nyangumarta and Paruku. We are leading three research projects jointly with academics from two NESP Research Hubs, one of them with the Department of Biodiversity Conservation and Attractions as well. Our support of the community conservation group, Society for Kimberley Indigenous Plants and Animals, continues through auspicing and hosting their new nursery facility. Lastly, we continue to work closely with the Kimberley Land Council and Indigenous Desert Alliance, developing joint project proposals and, by invitation, helping to facilitate sessions at their workshops.



Karajarri Rangers Jackie Wemyss and Sheen Kitty identify and weigh a skink during a field trip for the Karajarri Pirra Warlu (Desert Fire) project, which is supported by Environs Kimberley and the NESP Threatened Species Hub.



Environs Kimberley's famous cake bakers, Kylie Weatherall and Alex James, treated the Kimberley Women Ranger Forum 2019 to a solar oven showcase and a delicious Acacia Seed and Pear Cake cooking class.

Kimberley Nature Projects

COMMUNITY UNDERSTANDING AND PARTICIPATION

We continued to increase community understanding, capacity, participation and ownership, through the citizen-science Broome Seagrass Project. We are creating a dedicated KNP communications and media position, to build our presence in local and social media and allow the community to become more engaged in the scientific, community and cultural aspects of Kimberley Nature Projects. We are finalising a four-year-long project with the Bunuba community; Jess Miller worked closely with Bunuba elders to document their traditional plant knowledge, the effort culminating in the handbook: *Yarrangi Thangani Lundu, Mayi Yani-u: Bunuba trees and bushfoods*, edited by Louise Beames and Pat Lowe.

CONSERVATION ECONOMY

We continued to develop and support economic opportunities that celebrate and protect Kimberley nature and culture. We helped write three grants with three ranger groups to secure continued wages for rangers. The Kimberley Aboriginal Bush Resources Working Group was supported by Ayesha Moss through our Kimberley Community Seedbank project. While there has been a gap in funding for the project, we have recently secured support to realise our aspirations for a social enterprise seedbank partnership. Our *enriching producers* project has commenced, which, along with restoring native plant orchards, is supporting Karajarri Rangers and others to get bush resources such as seeds and fruits to market.

STRATEGIC CONSERVATION PLANNING AND PROTECTION

We increased strategically planned regional conservation by completing a Conservation Action Plan for Monsoon Vine Thickets. This was overseen by an Aboriginal-led Working Group, which will soon transition to Australia's second Indigenous-led National Recovery Team. We ran a Night Parrot workshop at Mulan for nine traditional owner groups to share their knowledge with scientists. After many years of advocating, through our regional interim Neem management plan (2017), our regional weed forum (2015) and our many Neem projects, we provided support to the Kimberley Rangelands Biosecurity Association's successful application to declare Neem under the Biosecurity and Agriculture Management Act (2007). To our great joy, it is now, along with Grader Grass, a declared weed in the Kimberley.

HEALTHY WORKPLACE

Our efficient, happy and inclusive workplace values long-term knowledge and relationships, and we continue to improve our management systems and maintain a healthy workplace culture. We take pride in being a family-friendly and flexible workplace, and our strong and highly committed team, which includes a number of part-time workers and working parents, is evidence that our approach is valuable. We are reviewing our OHS and project management systems and improving our internal communication processes between staff, managers and the Board. We renewed our Strategic Plan and are developing a system to better report on our performance and achievements to partners, funders and the public.



Environs Kimberley's Broome Seagrass Project won the 2019 Coastal Champion Award at the Western Australian Coastal Awards for Excellence, accepted here by the project's champion Coordinator Fiona West.



Eight Ranger groups learning sound analysis and sharing knowledge on a 46 degree day, the Kimberley Night Parrot Workshop in Mulan organised by Environs Kimberley with WWF, The KLC and the Paruku Rangers, October 2018.



The Yawuru Women Country Managers learning the new drill-and-pill weeding methods. Kylie Weatherall from Environs Kimberley has been working closely with these talented women on the revegetation of Minyirr Park's Monsoon Vine Thickets. Left to right: Daisy Walker, Mussariah Bank and Monica Edgar.



EK Events

Tess Mosop, Community Projects and Event Coordinator

Art Auctions 2018/19

From humble beginnings at the Gekko Bar in 2001, the EK Art Auction has grown into Broome's premier art event, consistently standing out as one of EK's largest sources of self-generated income.

Over these years, as the number of art pieces and patrons steadily increased, so too did the size of the venues required — from 2006, courtesy of Lachie Fraser, EK held the auction at The Broome Factory, before moving to Mick Connolly's Convention Centre in 2010.

The organisers built and extended EK's collaborations with the Kimberley Aboriginal art centres; almost all of them have contributed paintings to at least one EK Art Auction to date.

The 2015 auction was the most financially successful and largest gathering so far, earning EK some \$57,000, with over 600 people attending over the course of the night.

This year, once again, the room shone with a collection of wonderful works, complemented by the food, music and atmosphere, for which our art auction is known.

The growing success of the Broome art auction over the years inspired EK to hold a second one in Perth last year. 'Painted Country', a one-night event at Gallows Gallery in Mosman Park, brought together a stunning range of contemporary art from across the Kimberley, and provided a rare chance for art buffs in Perth to experience the quality and diversity of Kimberley Aboriginal art, and a taste of EK hospitality.

EK would like to acknowledge the contributions of all the people who have made the Broome EK art auctions possible over the years: as well as those who pioneered efforts to extend this event, in support and celebration of the Kimberley conservation cause, to wider audiences.



'Painted Country' exhibition and Auction, Mosman Park — opening performance by Clifton Jungurrayi Bieundurry and Paul Boon.



The Broome Art Auction in action

Concert for the Kimberley 2019



Mick Manolis, Stephen Pigram, Michael Pigram and Ngaire Pigram

The annual EK Concert for the Kimberley, now in its third year, has become another popular and vital awareness-raising event that helps fund EK's work to protect the Kimberley.

Following previous concerts by John Butler (2017) and Missy Higgins (2018), this year Kimberley virtuoso Stephen Pigram headlined the concert and was joined by a lively mix of friends and family, including Bart Pigram, Ngaire Pigram, Michael Pigram, Michael Manolis and Andy Reid. The concert also featured the wonderful Albert Wiggan, Tanya Ransom and Wil Thomas, joined by special guests Harry Jakamarra, Elwood Gray and Kevin Jones.

We are incredibly fortunate to have performers of such stature here in our hometown of Broome, all of whom generously donated their time in support of EK. With special thanks to them, and everyone else who made this great night possible.



Treasurer's Report

Laurel Sutcliffe

The 2018/19 Financial Year has been a very successful year for Environs Kimberley, with income soaring past the \$1 million mark.

Total Income was \$1,108,760 (2018: \$876,048). Of this, Grant Income for projects was \$341,528 (2018: \$367,795). We were successful in receiving two large grants late in the financial year with most of the work and funds being rolled over into 2019/20, providing much needed stability for the Kimberley Nature Project.

Income from Donations, Fundraising and Membership increased substantially to \$475,629 (2018: \$297,501), with donors expressing their concern regarding the Fitzroy River and Fracking in the Kimberley by supporting EK. Our work on non-grant related projects continued to increase with Income from Other Sources up by 45%.

Total Expenditure was \$851,598 (2018: \$913,173), with decreases in employment costs and project costs, and an increase in operating costs due to our increased fundraising efforts.

Statement of Financial Position

As at 30th June 2019

	2019	2018
ASSETS	\$	\$
CURRENT ASSETS		
Cash & Cash Equivalents	1,184,131	461,910
Financial Assets	120,285	117,218
Trade & Other Receivables	88,032	21,107
Other Current Assets	8,000	4,202
TOTAL CURRENT ASSETS	1,400,448	604,437
NON-CURRENT ASSETS		
Property, Plant and Equipment	16,672	29,487
TOTAL NON-CURRENT ASSETS	16,672	29,487
TOTAL ASSETS	1,417,120	633,924
LIABILITIES		
CURRENT LIABILITIES		
Trade & Other Payables	687,986	156,023
Provisions	51,482	57,671
TOTAL CURRENT LIABILITIES	739,469	213,694
NON-CURRENT LIABILITIES		
Provisions	22,033	21,775
TOTAL NON-CURRENT LIABILITIES	22,033	21,775
TOTAL LIABILITIES	761,501	235,469
NET ASSETS	655,619	398,455
TOTAL EQUITY	655,619	398,455

Statement of Change in Equity

For the year ended 30th June 2019

	Retained Earnings	Assets Gifted	Total members Funds
	\$	\$	\$
Balance as at 1st July 2017	439,092	2,615	441,706
Net income to members	(43,251)		(43,251)
Balance at 30th June 2018	395,841	2,615	398,455
Balance at 1st July 2018	395,841	2,615	398,455
Net income to members	257,162		257,162
Balance at 30th June 2019	653,003	2,615	655,619

Employment costs continue to be Environs Kimberley's biggest expense, although the current year has seen a decrease to \$523,536 due to uncertainty of grant funding in the first half of the year.

Expenditure on Projects accounted for 51% of our spending, with 49% on Advocacy, Governance, Fundraising and Administration.

Operating surplus for 2019 of \$257,162 - thanks to a substantial increase in Donations and Fundraising (2018 - Loss \$43,251) - gives Environs Kimberley members' Funds totalling \$653,003 (2018 - \$398,455). Environs Kimberley is in a very sound position as it moves into the new financial year with significant large projects and consultancies set to continue.

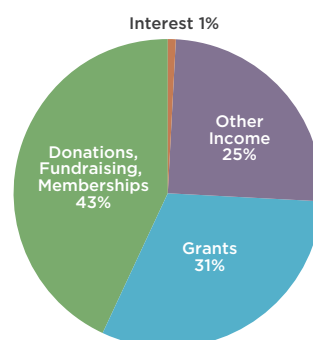
EK would like to thank Kevin Smith for his assistance with this report.

Income Statement

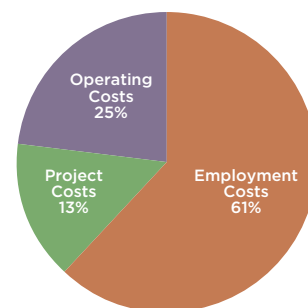
For the year ended 30th June 2019

	2019	2018
	\$	\$
INCOME		
Grant income	341,528	367,795
Donations, Fundraising, Membership	475,629	297,501
Interest	12,473	11,947
Other Income	279,130	198,806
Total Income	1,108,760	876,048
EXPENDITURE		
Employment Costs	523,536	573,654
Project Costs	111,169	134,096
Operating Costs	216,894	211,550
TOTAL EXPENDITURE	851,598	919,300
NET INCOME	257,162	(43,251)

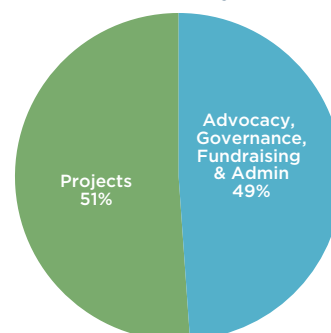
Where our money comes from



Where our money goes



What do we spend our money on



Environs Kimberley Board



Kate Golson, Chairperson

Born in Canberra, Kate Golson first arrived in the Kimberley in 1992. She has worked with a host of community organisations as well as universities and government on projects ranging from community development, native title, cultural heritage protection through to sustainable development, cultural and natural resource management and tropical river research. She has extensive experience in social research, community engagement, communications, and monitoring and evaluation, and holds a BA and MA in Anthropology from Sydney University.



Stephen 'Bart' Pigram

Bart is an extremely active Yawuru community member of Broome, and over the past six years has taken part in a wide range of award-winning cultural and arts projects. Bart is a former employee of Nyamba Buru Yawuru and former Yawuru PBC Director. His experience and passion for the maintenance of culture on country by the community in an environmentally sustainable manner is central to his vision for the Kimberley. Bart also independently owns and operates his tourism business, Narlijia Cultural Tours, in Broome, and strongly encourages community members to pursue employment in industries that are culturally, environmentally and economically sustainable.



Laurel Sutcliffe, Treasurer

From Victoria, Laurel gained a BA and a Diploma in Education from Melbourne University and taught at schools in Victoria and Papua New Guinea before moving to the Kimberley in 1986 to work in Aboriginal education. She lived at Yakanarra community near Fitzroy Crossing for 20 years as the school administrator and principal, while raising a young family. In 2006, she moved to Broome and has been teaching at Broome Senior High School ever since.



Kat Taylor, Secretary

Kat arrived in the Kimberley in 2010. She is an environmental educator and water specialist and has extensive experience working for Aboriginal and environmental organisations (including the Kimberley Land Council, and the Centre for Appropriate Technology and Arid Lands Environment Centre in the Northern Territory) and in government. Kat is studying for a PhD in water policy at ANU and holds a Bachelor of Science in Environmental Science (Honours) and a Bachelor of Science in Conservation Biology from Murdoch University. She co-presents The Sound Environment show on Radio Goolarri in Broome.



Peter Mitchell

Peter grew up in South-west WA and holds a BA degree from Curtin University. His early work was in the mining and surveying industries in outback WA. In 1988 he settled in Broome, where he has worked in various roles including the Telecentre Coordinator, and for the Department of Child Protection and Kullarri Employment Services. Peter was a Broome Shire Councillor for six years and is a founding member and former chair of EK. He also spent several years living and working in Halls Creek, where his first child was born. He is the CEO of the Men's Outreach Service in Broome, is a board member of the Australian Men's Health Forum, and received the 2017 Kullarri NAIDOC Person of the Year Award.



Nik Weavers

Long-term resident of the Pilbara and Kimberley, Nik has been employed by and sat on the boards of numerous not-for-profit community organisations. She has also been a board member of the Broome Port Authority and the Kimberley Development Commission, and served for 10 years as a Shire of Broome Councillor, including six years as Deputy Shire President. Nik is committed to the sensible preservation of the natural environment of the Kimberley, while supporting development that creates opportunities for Kimberley people.



Shaun Clark, Vice Chair

A landscape supervisor, Shaun has a particular interest in Aboriginal knowledge of fauna and flora. A former Geikie Gorge National Park Ranger, he has had a long involvement with the Aboriginal communities of the Dampier Peninsula and significant environmental management experience. Shaun has worked in many fields, including computer programming, agriculture, horticulture, irrigation, landcare and Indigenous community development. He has taken part in various environmental projects in the West Kimberley such as weeding, bush regeneration and coastal protection.



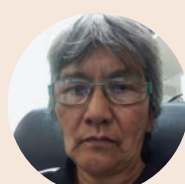
Carmel Leahy

Born in central western NSW, Carmel is a teacher, linguist and literacy specialist who has worked at various schools and institutions, including Yakanarra Community School in the 1990s, Broome Senior High School, Mabu Yawuru Ngan-ga language centre and Nyikina Mangala Community School. She is currently a teacher at Yiyili Aboriginal Community School. Carmel is an active member of the Society for Kimberley Indigenous Plants and Animals (SKIPA). She has a Bachelor of Education in Multicultural Education from Edith Cowan University, a Master's degree in Applied Linguistics from Charles Darwin University and Cert III in Conservation and Land Management.



Craig Phillips

Craig was born in Melbourne and moved to the Kimberley in 1994. His previous roles include Managing Director of OEM Supplies—Northwest, Victorian sales manager of Columbus Mufflers, and West Australian sales manager of Lukey Mufflers. In Broome, Craig runs a computer IT sales-and-service company. He has served on the boards of the Broome Chamber of Commerce, the Small Business Centre West Kimberley and St. Mary's College, and has been an EK Board member since 1999.



Rowena Puertollano

Rowena was born in Broome, one of seven siblings. Her family background is Idal-Buru from the Lake Edarra area, which comes under Yawuru Native Title, on her father's side, and Bardi/Jawi on her mother's side. Rowena holds a Diploma in Counselling and Psychotherapy and works at Nirrumbuk as the Senior Youth Worker. She was active in the James Prices Point campaign and fought for the environment, country, culture and family, which mean the world to her. Rowena has a real connection to her country and culture and is passionate about looking after Broome and the Kimberley environment, culture and wildlife, for her family and all future generations.



Richard Hosking

Richard comes from Perth and spent 30 years working in taxation in WA, a time he prefers to forget. He is active in the economic evolution of 'bush-based' enterprises that give employment opportunities to local communities and preserve the country cared for by traditional owners for tens of thousands of years.

A keen environmentalist, Richard says:

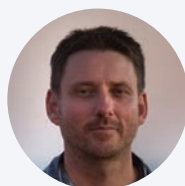
Our evolution towards working with, rather than controlling, nature has begun, especially in the unpolluted land of the Kimberley. It's a place where organisms have adapted over millennia to produce abundant food and materials without pesticides, herbicides, trillions of litres of water, nor landscape-altering practices.



Sean Salmon

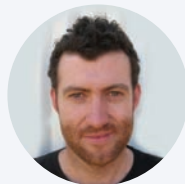
After growing up in Country Victoria and attending University in Ballarat, seeking adventure Sean travelled to the Kimberley in 1996 and has remained here ever since. He enjoyed working in the Pearling and Fishing industries on the remote Kimberley coast, and finally completed his degree in Education in 2006 whilst working on community landscaping projects. Sean's teaching career began in Wyndham in 2007. In 2009 he returned to Broome with his partner and two sons and continues teaching in Broome, specialising in Indigenous Education.

Environs Kimberley Staff



Martin Pritchard, Director

From a rural Welsh background, Martin has extensive agricultural experience gained in England, Wales, New Zealand and Australia. He holds a Higher National Diploma and Bachelor of Science in Agriculture, and a Postgraduate Diploma in Policy Studies, specialising in Ecologically Sustainable Development, from Murdoch University. Martin has worked in catchment management in the South-west of Western Australia, chaired a number of environmental non-government organisations and been a member of ministerial-appointed boards. Martin has been the Director of EK since 2008.



Dr. Malcolm Lindsay Program Manager, Kimberley Nature Project

Malcolm hails from Melbourne and holds a Bachelor of Science (Honours) and a PhD in marine ecology from the University of Melbourne. His professional marine and terrestrial ecology experience includes working for community groups, environmental consultancies, university researchers and government departments. He has also held international internships, including at the Charles Darwin Research Station in the Galapagos Islands. Malcolm joined EK in 2012 and coordinates the Kimberley Nature Project jointly with Louise Beames.



Louise Beames Program Manager, Kimberley Nature Project

Louise grew up on the family farm in Victoria, collecting and propagating native seeds to restore intensively degraded areas. She has a Bachelor of Science from Melbourne University and a first-class honours degree in Applied Biology from Victoria University. Before arriving in the Kimberley in 2007, Louise worked as an applied ecologist and operations manager for a Victorian environmental management consultancy. In her 10 years with EK, Louise has led the expansion of our environmental management activities from a 12-month weed grant for the Community Weed Project, which transformed into the West Kimberley Nature Project, now the Kimberley Nature Project.



Christine Elsasser Administration and Finance Officer

Christine hails from Germany, where she gained a Master of Arts in German Mediaeval Literature and worked in the production department of a publishing house, calculating costs and organizing the printing and binding of books. In 1998, after moving to Australia, she has worked in various office roles for a number of organisations, including Magabala Books, Broome's Aboriginal publishing house. Christine joined EK in 2007.



Tessa Mossop Community Projects and Events, Coordinator

Originally from a small coastal town on the mid-north coast of NSW, Tessa completed a combined Law and Communication degree at the University of Newcastle and worked for various environmental and community-based organisations during this time. After graduating Tessa worked in North-east Arnhem Land as solicitor with the North Australian Aboriginal Justice Agency before moving to Broome in 2011. Tessa joined EK in 2014.



Phillip, Walker, Frack Free Kimberley Coordinator

Originally from Melbourne, Phillip spent thirty years working in international aid, primarily in Africa and the Pacific. He holds an MSSC in International Community Development. Phillip's involvement in social justice issues has included the Vietnam Moratorium, the Movement Against Uranium Mining, Aboriginal land rights and the union movement; he has also been an active member of the Victorian Climate Emergency Network. Since arriving in Broome in 2016, Phillip has engaged with community sector organisations, volunteered on various initiatives, and been learning about this unique part of the world.



Grace Dungey, Media & Research Analyst

Grace is from Victoria, and holds a Bachelor of Arts (Global) and Diploma of Languages from Monash University. Grace studied Indonesian law in Yogyakarta, Java. Before relocating to Broome, Grace was based in Chengdu, China, under the Hamer Scholarship Program. She has worked as an Indonesian Affairs consultant for global NGO Human Rights Watch in Indonesia and Australia, as a communications officer for the Melbourne-based Indigenous Education Foundation, and at Nulungu Research Institute in Broome. Her writing on the environment has appeared in national and international news outlets such as Al Jazeera, Asia Times, and The Jakarta Post.



Fiona West, Seagrass Project Coordinator

Starting life in Kalumburu, where her parents were teachers, Fiona has always loved the Kimberley. She worked as a journalist for newspapers in WA and the NT and completed studies in anthropology, sustainability and social research. Fiona worked as an anthropologist, historian and heritage consultant before joining EK in 2008 as the Broome Community Seagrass Monitoring Project Coordinator. She is passionate about seagrass and educating the community about its importance.



Jessica Miller, Project Officer, Kimberley Nature Project

Jess hails from the east-coast Hunter region. She has a diverse work background, including environmental and heritage management in the Australian and ACT Governments. Her qualifications include a Bachelor of Natural History Illustration, a Master of Natural Resource Management and a soon-to-be-completed research Masters in Environmental Impact Assessment and Ecology. Jess volunteers in environmental education, conservation and community advocacy and she enjoys learning about sustainability leadership, adventuring with friends and making art.



Kylie Weatherall Project Officer, Kimberley Nature Project

Kylie was born in Northam in Western Australia and has had a lifelong love of the state's wide-open landscapes and natural environment. She studied biological sciences at Murdoch University and has a Postgraduate Certificate in Indigenous Management Studies from Edith Cowan University. Kylie also holds qualifications in fine art, and conservation and land management. She has worked in human services, community development, tourism and art and science. Kylie joined our organisation in 2011. She is also the contact person for Broome-based landcare group the Society of Kimberley Indigenous Plants and Animals.



Ayesha Moss, Project Officer, Kimberley Nature Project

Ayesha is a project officer with the Kimberley Nature Project team. She has a Bachelor of Science (Honours) and a Diploma of Information Systems from the University of Melbourne and a Diploma of Project Management. Before coming to the Kimberley she worked in mapping, waterway management and community education. Ayesha moved to Derby in 2011 and worked in local government in a community development role. She started with Environs Kimberley in 2014, tying together her interests in community development and natural resource management. Current projects include working with Indigenous groups on the Kimberley Community Seedbank project, and with the SKIPA community group.



Nigel Jackett, Project Officer, Kimberley Nature Project

Nigel grew up on the South Coast of NSW, and holds a Bachelor of Environmental Science (Hons.) from the University of Wollongong. Since 2006, he has worked on threatened species projects for government agencies in NSW and Canada, as an environmental consultant for resource and renewable energy projects throughout WA, and, most recently, managed the Broome Bird Observatory on the northern shores of Roebuck Bay. Nigel specialises in providing technical advice and monitoring threatened fauna, with a particular focus on migratory shorebirds and the enigmatic Night Parrot.

Thank You

Environs Kimberley is heavily indebted to all our funders, partner organisations and donors and we thank them for their support.

Funding Support



Partners and collaborators



Acknowledgement of photographers

Front cover - Monsoon Vine Thickets on the Dampier Peninsula

Page 3 - Nyikina Traditional Owners stopping illegal clearing at Yakka Munga pastoral lease - Martin Pritchard; Broome community, Entrance Point, 2018 - Damian Kelly

Page 4 - Working on the Bunuba Plants Book, 2019 - The Kimberley Nature Project; Toby, Mervyn, Wynston and Mal at Google H.Q in Sydney, 2018

Page 5 - Karajarri Rangers at a field trip for the Karajarri Pirra Warlu (Desert Fire) Project, 2019 - The Kimberley Nature Project; Environs Kimberley famous cake bakers at the Kimberley Women Ranger Forum, 2019 - The Kimberley Nature Project

Page 6 - Fiona West at the WA Costal Awards for Excellence, 2019; Kimberley Night Parrot Workshop in Mulan, 2018 - The Kimberley Nature Project; Yawuru Women Country Managers, 2019 - the Kimberley Nature Project

Page 7 - Paul Boon and Clifton Bieundurry at 'Painted Country', Mosman Park 2018 - Todd Delfs; The Broome EK Art Auction, 2019 - Kevin Smith; The Concert for the Kimberley, 2019 - Damian Kelly

Back cover - Looking for Night Parrots on Ngurrara Country, 2019 - The Kimberley Nature Project

EK has been dedicated to protecting the Kimberley's land and waters for twenty-three years.

This magnificent country faces many and increasing threats; too frequent fires, feral animals, weeds, broadscale land-clearing, dams, mining and encroaching industrial development are all putting our precious Kimberley environment at risk. Our overriding objective is that the lands and waters of this special part of the world be protected and sustainably managed. We continue to work closely with Aboriginal ranger groups and local communities, and collaborate with a broad range of organisations and agencies, to achieve this end.



SAVING THE NATURE OF THE KIMBERLEY

Environs Kimberley's Nigel Jackett searches for Night Parrot habitat with the Ngurrara Rangers on the Canning Stock Route

Office: 44 Blackman St, Broome
Western Australia 6725

Post: PO Box 2281, Broome Western Australia 6725

Telephone: 08 9192 1922

www.environskimberley.org.au



@EnviroKimberley



[environs.kimberley](https://www.facebook.com/environs.kimberley)



@environskimberley