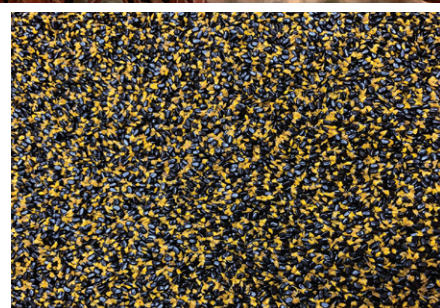
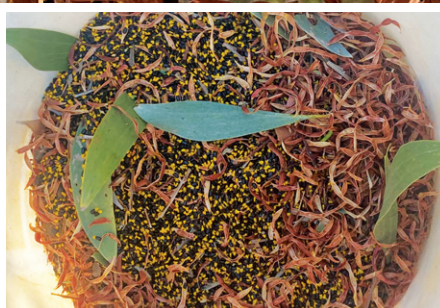


Cleaning Guide

Wattle Seed (*Acacia* spp.)



There are many different types of wattles in the Kimberley.

This guideline relates to the cleaning of noomoorrgoodoord (Bardi) numornagugud (Nyul Nyul) lirrirnggin (Yawuru) and lirringkin (Karajarri and Nyangumarta), also known as soap wattle, *Acacia colei*. The guidelines can also apply to the collection of other wattles.

Why Clean?

When wattleseed is collected in the field it will be accompanied by seedpods, leaves, dirt, and fine dust. Cleaning the seed allows:

- separation from insects or other lifeforms, including decaying chaff, that can damage the seeds and cause fungal infection, decay, and disease
- non-viable seeds to be removed
- more accurate weighing
- improved storage
- use in foodstuffs.

Cleaning in the field



1) DRYING

Once you have collected the seedpods, lay them on the tarp to dry in the sun for several hours. It is best to do this in calm conditions, away from windy areas.

This helps to remove moisture-loving pests and diseases that can spoil the seed.

2) THRESHING

Fold the tarp over the seeds and hit the tarp with a stick or shovel. You can also stomp on it.

This separates the seed from the seedpods and encourages the seeds to settle to the bottom of the tarp.

3) SEPARATING

Open the tarp and remove the top-level 'waste'. This is the lighter broken seedpods, leaves and twigs now resting on the top of the pile. The seeds left behind are now ready for finer cleaning.

A second field clean of the 'waste' is not recommended as it will generally yield an insignificant volume of seed. This time is better spent collecting more seed.



Finer Cleaning

4) SIEVING

Put seed through a seed sieve. Choose a sieve size that captures the seed and allows the dirt and dust to fall through.

You can also wash the seeds and dry them. This allows you to identify the non-viable seeds, which will float to the surface. Dry the seeds in the sun to make sure they are fully dry before being packed away and transported for the next stage of cleaning.

Don't spend too much time getting every little bit of dirt out of the seed. Weigh up the best use of your time — cleanliness versus efficiency.



5) SEED CLEANING MACHINE

To remove further waste, dirt, and dust, put the sieved seeds through the seed-cleaning machine. Do this several times until there is no visible dirt or dust.

Seed should be as clean as possible so that it can be weighed accurately. Removing all dirt and dust is important, especially if the seed is going to be processed for food.

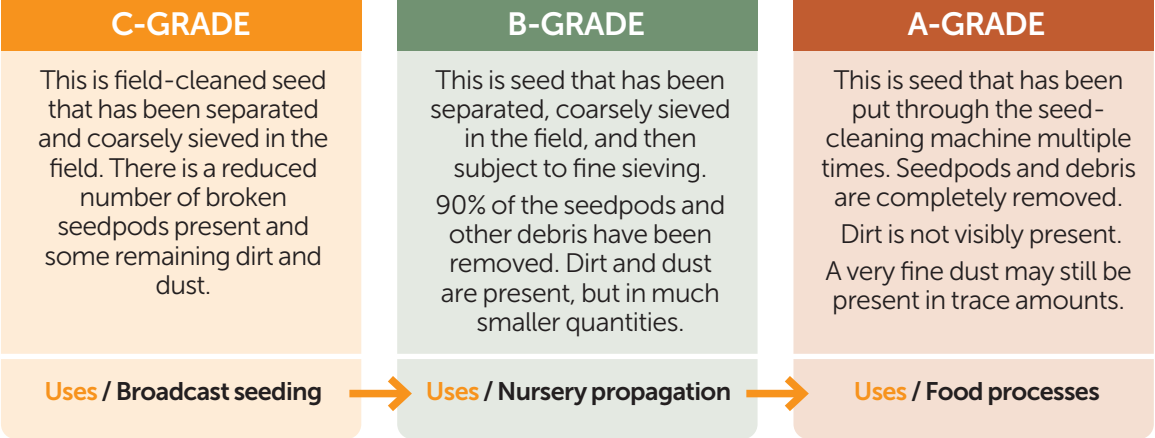


Grades of cleaned seed

Use the guide below to identify the grade of the cleaned seed.

There are different applications and value for seed of different grades.

For example, broadcast seeding in revegetation areas will only require C-grade seed, while seed being sold for food must be A-grade.



Grade	METHODS				CONTENT DESCRIPTION	
	Field Cleaned	Course Sieving	Fine Sieving	Machine Cleaned	Seedpods & debris	Dirt and Dust
A	●	●	●	●	100% removed	Only trace amounts remain
B	●	●	●		90% removed	Present in small quantities only
C	●	●			Reduced	Reduced

Weighing and Recording

1) FILL A BAG WITH CLEANED SEED

Ensure the seeds and the bag are completely dry before filling the bag.



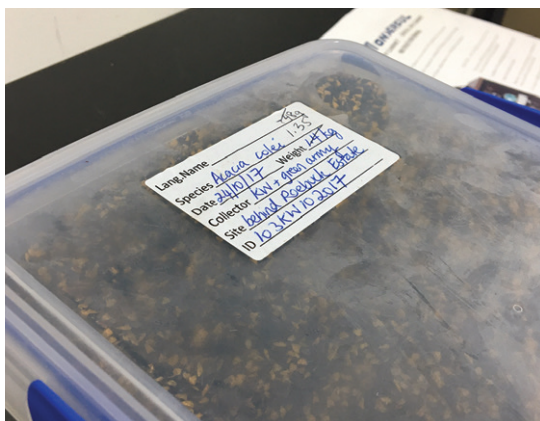
2) WEIGH SEED

Remember to weigh the bag prior to adding seed and remove bag weight from final weight.



3) RECORDING

Place the weighed seed into a container. Record the weight, the date including the year, the name of the plant the seed was collected from (ID), the location of the collection, and the collector's name(s) on the stickers provided.



Seed Storage

Store seeds in a cool, dry environment until you are ready to use them.

If you are placing your seed on consignment through the Environs Kimberley Community Seedbank, you will need to deliver the seed soon after it has been cleaned, weighed, and placed in a container. The Seedbank staff and volunteers will check the moisture content of the seed and ensure that it can be kept dry and secure prior to sale.

Contact knnp@environskimberley.org.au to obtain the consignment forms and arrange drop-off or collection of the seeds.



Produced by Environs Kimberley, L. Beames, S. Younis, A. Moss.
Photos: A. Moss, L. Beames, D. Kelly, Camera Story. Drawing: C. Hill

