

Koalas of Won Wron and Mullungdung State Forests



Photo: Alison Livermore

Surveys 2020 – 2025 Final Report

February 2026

Anthony Amis

INDEX

Key Findings p4

Introduction p5

Surveys – A Deeper Dive into the forests starting in 2022 p7

Methodology p8

Strzelecki Koala Genetics p10

Results & Population Estimates p12

Drone Surveys p14

Koala Scats and Positive Sites p16

Ecological Vegetation Classes (EVC's) p25

Soils p47

Koala Hotspots p42

Land Use Discussion p43

References p45

Thanks: Dr. Steve Phillips, Kirsty Wallis, Alison Livermore, Anne Abbott, John Tocknell, Carol Tocknell, Michelle Baxter, Susan Taylor, Tucker Foundation, Australian Ethical, Pool of Dreams, Australian Geographic, Hamer Sprout Foundation, SKAT collective and Friends of the Earth Melbourne.

GLOSSARY

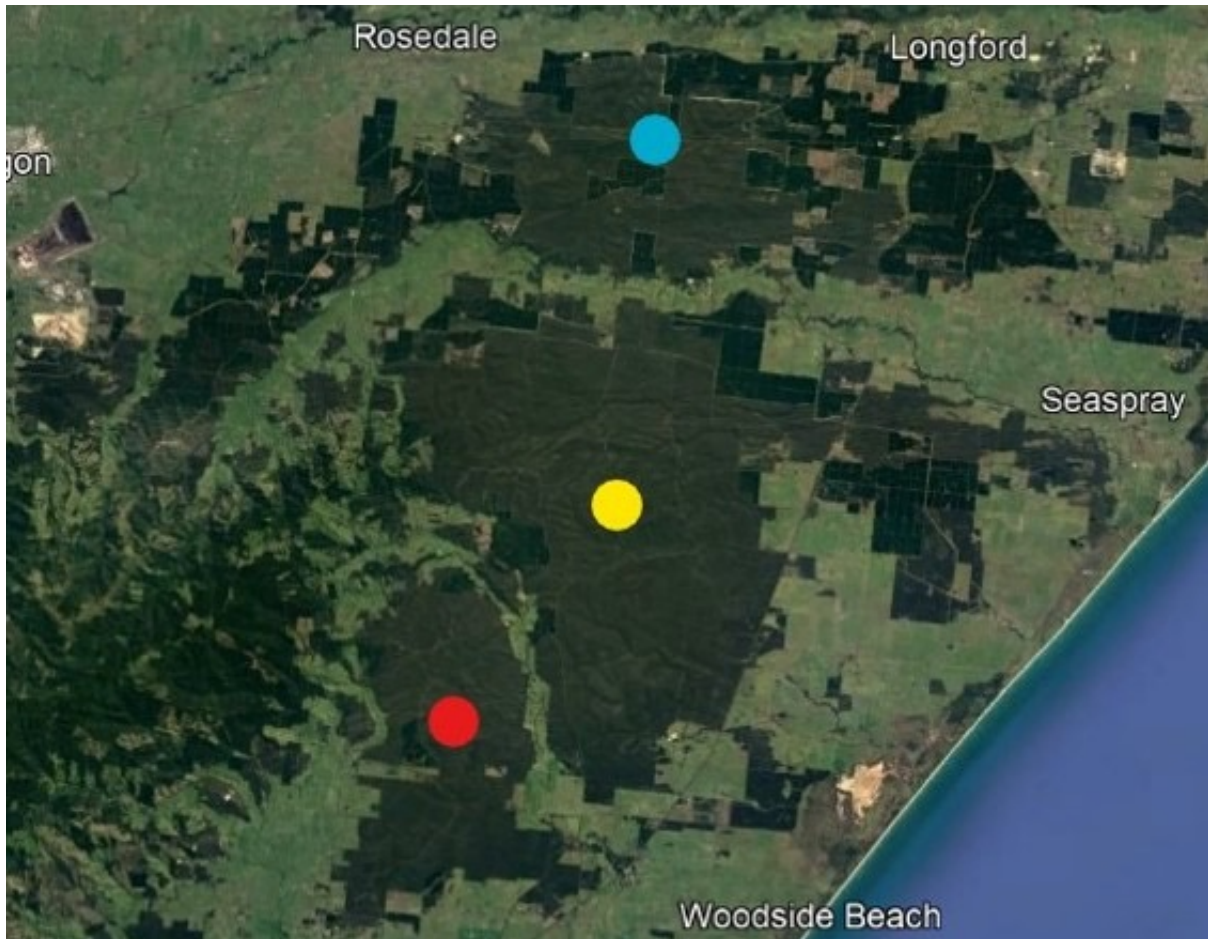
| | |
|-------------------|--|
| CHRW: | (Creekline Herb Rich Woodland) |
| DBH: | (Diametre at Breast Height) |
| E.ango: | (Eucalyptus angophoroides - Apple Top Box) |
| E.bridge: | (Eucalyptus bridgesiana - But But) |
| E.con: | (Eucalyptus consideniana - Yertchuk) |
| E.cyp: | (Eucalyptus cypellocarpa - Mountain Grey Gum) |
| E.glob: | (Eucalyptus globulus - Blue Gum) |
| E.mue: | (Eucalyptus muelleriana - Yellow Stringybark) |
| E.obl: | (Eucalyptus obliqua - Messmate) |
| E.ovata: | (Eucalyptus ovata - Swamp Gum) |
| E.rad: | (Eucalyptus radiata - Narrow Leaf Peppermint) |
| E.sie: | (Eucalyptus sieberi - Silvertop Ash) |
| E.vim: | (Eucalyptus viminalis - Manna Gum) |
| E.will: | (Eulayptus willisii - Shining Peppermint) |
| EBPC: | (Environment Protection and Biodiversity Conservation Act) |
| EVC: | (Ecological Vegetation Class) |
| FoE: | (Friends of the Earth) |
| Ha: | (Hectare) |
| PKFT: | (Preferred Koala Feed Tree) |
| PKH: | (Primary Koala Habitat) |
| Rapid Sat: | (Spot Assessment Technique) |
| RGB-SAT: | (Regularised Grid-based Spot Assessment Technique) |
| SKAT: | Strzelecki Koala Action Team (a collective of Friends of the Earth Melbourne) |

KEY FINDINGS*

- **Estimated koala population at Mullungdung: 489 +-109***
- **A quarter of all Strzelecki Koalas could occur at Mullungdung and Won Wron**
- **Mullungdung Primary Koala Habitat >200ha**
- **Won Wron Primary Koala Habitat >80ha**
- **Mullungdung Preferred Koala Habitat 6666ha***
- **Won Wron Preferred Koala Habitat 2805ha***
- **12 species of Eucalypts utilised by koalas**
- **Favourite Koala Trees (Mountain Grey Gum, Swamp Gum, Yellow Stringybark)**
- **Average Mountain Grey Gum size, with scats, 945mm DBH, highlighting preference for older trees 80 years+**
- **Drone Surveys confirmed Primary Koala Habitat Estimations**
- **Creekline Herb Rich Woodland and Riparian Scrub (50% of all scats at Mullungdung)**
- **Mountain Grey Gum are of utmost importance but are not listed in main Ecological Vegetation Classes.**
- **50 koala hotspots identified**
- **Over 5400 trees surveyed**
- **There is an urgent need to expand the reserve system Mullungdung and Won Wron**
- **Koalas appear more frequently in riparian zones at Mullungdung, than Won Wron**
- **Mountain Grey Gum appears to be more numerous at Mullungdung, than Won Wron, with Swamp Gum appearing more popular at Won Wron**
- **Scats found in Won Wron Plains Woodlands or Forests are more common than Mullungdung, particularly in the southern half of Won Wron.**

*Estimations by Biolink (7)

INTRODUCTION



Location of Mullungdung State Forest (Yellow dot). Won wron State Forest (red dot) and Holey Plains State Park (blue dot). Holey Plains was almost entirely devastated by a bush fire in April 2019 causing major impacts on the local koala population.

Between June 2020 and November 2025 Friends of the Earth Land Use Researcher Anthony Amis, conducted koala surveys at Mullungdung and Won Wron State Forests in south east South Gippsland in southern Victoria. These forests are in the Gippsland Plains Bioregion on the traditional lands of the Gunai/Kurnai people.

416 surveys were conducted at Mullungdung between June 2020 and September 2023. 307 surveys were conducted at Won Wron between March 2021 and September 2025. Initial surveys focused on roadsides with estimates of koala numbers understated.

Surveys were limited by Covid lockdowns during 2020/21. Surveys took place mainly when funding was available over the six year period. Funding was limited to mainly major donors including Tucker Foundation (2019), Ethical Jobs (Australian Ethical) (2021), Pool of Dreams (2020/2021) and the Lachlan Abbott Foundation. Smaller donations from Australian Geographic (2022), Hamer Sprout Foundation (2023) and individuals also helped contribute to better understanding of Mullungdung. Friends of the Earth Internal Grants helped Anthony complete Won Wron surveys over 2023/25.

Survey costs, including wages, fuel and vehicle maintenance over the time period amounted to ~\$40,000. The drone flights cost another \$7,000 and were paid for by SKAT. Thanks to all of our donors.

Lack of funding impacted on the results, as the “stop start” nature of the surveys and the need to report back to funders made some our findings premature. In 2021 it was also unclear if surveys at Mullungdung and Won Wron could continue due to lack of funding.

It was also evident that during the 2019-2021 surveys, koala numbers may not have been as high as previous surveys in the Strzelecki’s.

2019/20: *“Mullungdung State Forest was largely absent of signs of koalas. 33 surveys (825 hectares) were conducted in the northern sections of Mullungdung. The forest was located mainly on poor soils and the dominant tree type was Yertchuk. Further surveys need to be conducted in the southern parts of the forest.” (1)*

FoE estimated in 2020/21 that *“the koala population at Won Wron State Forest to be between 25-50 animals and for Mullungdung between 70-140 animals”... (2)*

“Another round of surveys will be required at both Mullungdung and Won Wron as only 50% of available sites have been surveyed... It was surprising to find relatively large areas of Mountain Grey Gum at both Mullungdung and Won Wron.”. (2)

Each survey day was approximately 12 hours in length with a further 6 hours the following day to enter data and add to map sites. ~1500 hours would have been spent on this project.

| Survey Days | | Average Daily Sites |
|--|-----------|---------------------|
| Mullungdung (June 2020 - September 2023) | 43 | 10 |
| Mullungdung (riparian zones) | 6 | |
| Won Wron (March 2021 – September 2025) | 31 | 10 |
| Won Wron + Mullungdung (RGB-SAT) November 2025 | 2 | 5.5 |
| Total | 82 | |

SURVEYS

A DEEPER DIVE INTO THE FORESTS STARTING IN 2022

Initial surveys started in June 2020 at Mullungdung and focussed mainly on sites located within 50 metres of roadsides. Only 1 scat was found in 31 sites over 3 survey days in June/July 2020 at Mullungdung. Some roadside surveys were also conducted at Won Wron in 2021 with only 2 scats found in 60 survey sites. Mountain Grey Gum was observed in April 2021 with confirmation of a Mountain Grey Gum scat. By May 2021, 60 sites, including 5 containing Mountain Grey Gum had been surveyed at Won Wron, but again numbers appeared to be low.

Despite initial impressions that both forests would not contain many koalas, things started to change with a more intensive look at Mullungdung in May 2021 with sites revealing stands of Mountain Grey Gum. Phillips/Allen 2014 (3) + Phillips/Wallis/Biolink 2016 (4) determined that Mountain Grey Gum was one of three preferred koala feed trees in the nearby Strzelecki Ranges. Was this the same for Mullungdung and how extensive were stands of Mountain Grey Gum at

Mullungdung? The first positive detections of koala scats under 3 separate Mountain Grey Gums at Mullungdung occurred in July 2021 south of Goodwood Road, but confirmation at survey sites didn't occur until November.

A total 120 surveys had been carried out at Mullungdung by August 2021, only 28% of the final amount. By December 2022, 71 surveys had been conducted at Won Wron, 23% of the final amount. Surveys wouldn't occur again at Won Wron until July 2024.

A decision was made to have a 'deeper dive' into Mullungdung, with some sites hundreds of metres from roads.

55% of koala survey days at Mullungdung occurred in Winter, with 24% occurring Spring. 52% of koala survey days at Won Wron occurred in winter, with 19% occurring in Spring. Winter was preferred due to reducing the risks of snake bite.



Occupational Hazard. Red Belly Black Snake getting some winter warmth at Won Wron in the middle of winter.

METHODOLOGY

The methodology used for the surveys was a variation of Rapid SAT* developed by Biolink. (15)

Survey sites were located at 500 metre intervals at 1:50,000 topographical map grid intersects (Darriman and Woodside) GDA94 (MGA94) Zone 55. Survey sites were located by GPS. At survey sites a centre tree, (within 20 metres of GPS co-ordinate) was selected, and the six closest trees and the centre tree were surveyed for scats and measured. Each tree was searched up to 1 metre outwards from the trunk. Occasionally scats were located further than 1 metre away from the tree.

Tree identification was also attempted. Ideally surveys should have been carried out by 2-3 people (including a qualified botanist). If a scat was found at a survey site, searches at that site would conclude, meaning at positive sites, not all seven trees were searched. The same methodology was used at the 723 survey sites at Mullungdung and Won Wron. This provided unbiased results across the landscape. (*Rapid SAT usually means that only Preferred Koala Feed Trees (PKFT's) are searched for scats, however the FoE surveys still conducted surveys even in the absence of PKFT's).

Eleven further sites (five at Won Wron and six at Mullungdung) were also surveyed in November 2025 using the Regularised Grid-based SAT (RGB-SAT) method of 30 trees surveyed around a centre tree. All of these

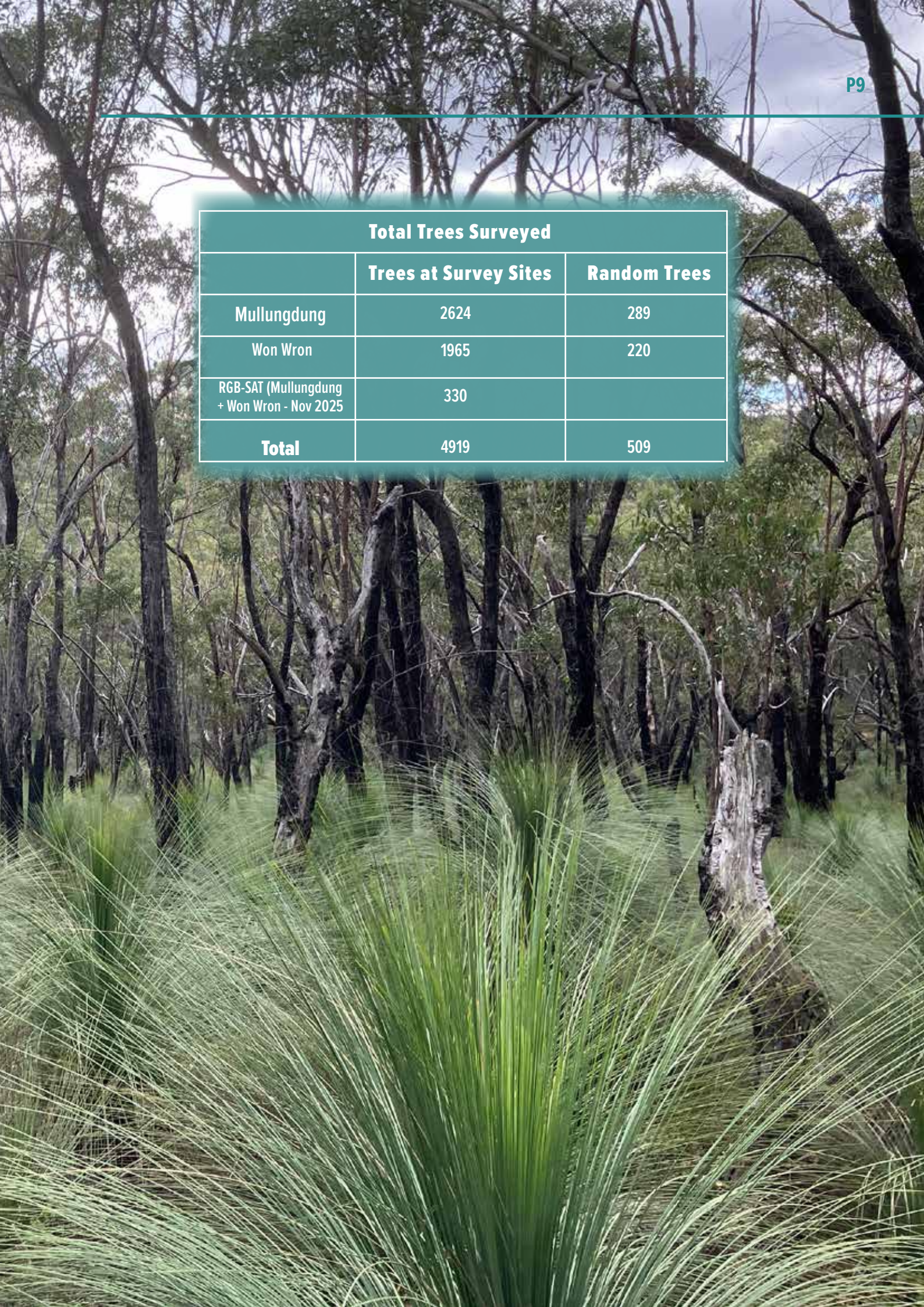
sites had been surveyed previously and were revisited due to the prevalence of Swamp Gum (*E.ovata*). Phillips suggested that it would be worthwhile do more Swamp Gum sites in order to determine whether Swamp Gum could be classified as a PKFT.

During survey days it was also decided to look for scats at randomised locations where PKFT's were present. In a number of areas, it was obvious that many Mountain Grey Gum's were located outside of the grid based survey sites and it would be of interest to survey some of these areas to determine koala presence. In July 2022 it was decided to take a closer look at areas outside of the 'grid'. Six survey days included surveying areas "off-grid".

94% of Mountain Grey Gum scats found at Mullungdung and Won Wron were located mainly in gully lines/riparian zones which did not fit into the grid based survey sites. Scats found during these surveys are listed in this report and mapped as 'random scats'. 85% of all Swamp Gum scats were found 'randomly'. 68% of Yellow Stringybark scats were also found 'randomly' generally due to walking between survey sites or in riparian areas in close proximity to Mountain Grey Gums. Hence the random searches are heavily biased towards these 3 species. Three sets of information have therefore been collected. 1) Rapid SAT Surveys, 2) Random scat finds and 3) RGB-SAT surveys.



| Total Trees Surveyed | | |
|---|------------------------------|---------------------|
| | Trees at Survey Sites | Random Trees |
| Mullungdung | 2624 | 289 |
| Won Wron | 1965 | 220 |
| RGB-SAT (Mullungdung + Won Wron - Nov 2025) | 330 | |
| Total | 4919 | 509 |



STREZELECKI KOALA GENETICS

Wedrowicz (2018) (5) mapped the DNA of the Strzelecki koala to investigate genetic variation, using microsatellite genotyping and mitochondrial sequencing from 222 koalas. Scats sampled from the Won Wron and Mullungdung forests were few, with perhaps <10 samples coming from these forests. It would appear that the dominate genetic cluster at both forests is C6 and that Won Wron forests are close to Yellow Stringybark dominated forests associated with the C5 cluster.

Wedrowicz stated *“In this study, we have shown that koalas in the South Gippsland Region are differentiated from all other koala populations sampled. They also have a significantly greater level of genetic diversity compared to other Victorian koala populations, retaining a greater proportion of the ancestral diversity that*

was lost post European settlement. The importance of conserving the koala gene pool in the South Gippsland region therefore cannot be overstated, as they carry additional genetic diversity that is not present in populations established by island animals.” (5)

Further scat samples from Mullungdung were collected by Kelly Smith (Federation University) in 2023 through ‘The Great Victorian Koala Survey’ conducted by the Victorian State Government through the Arthur Rylah Institute. Sadly this \$850,000 project has not yet been made public, with criticism in November 2025 that *“The department has sat on the study since June, and its authors have been unable to discuss any of its content, which *** describes as extremely frustrating”.* (6)



Fresh Koala Scats

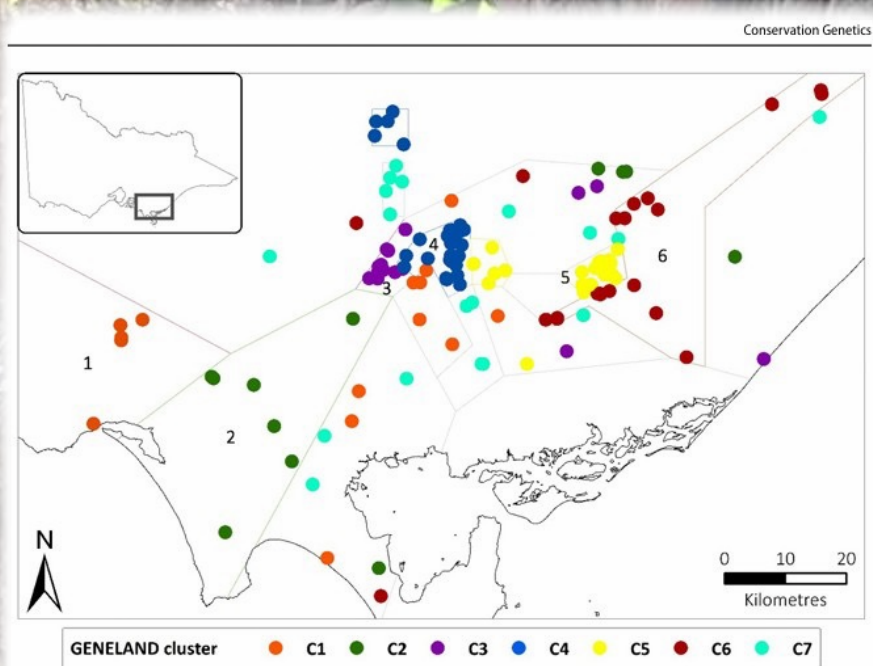


Fig. 3 Population substructure in South Gippsland inferred using GENELAND ($n=155$). Each point represents a sampled individual and colours are indicative of different population clusters, which are overlaid with polygons delineating regions of population cluster-

ing for greater clarity. Spatially well-defined population clusters with more than six individuals are numbered 1 through to 6. (Color figure online)

Reference above (5)

It is disappointing that 'The Great Victorian Koala Survey' has not been released as it could shed more further light on genetics of koalas from Mullungdung and Won Wron. forest.

FoE submitted an unsuccessful nomination for the Strzelecki Koala under the EPBC Act in 2022. Victorian Government studies confirming the significance of the Strzelecki Koala would greatly enhance further nominations.

RESULTS & POPULATION ESTIMATES

Phillips/Wallis have kindly provided a population estimate based on the Friends of the Earth Surveys at Mullungdung and Won Wron. These estimates have been calculated from Rapid SAT sites and not random scat finds.

“Preferred Koala Food Trees;

River red gum E.camaldulensis, Mountain Grey gum E. cypelloarpa, Southern Blue gum E. globulus, Swamp Gum E. ovata (DD), Forest red gum E. tereticornis ssp. mediana*, Manna Gum E. viminalis (DD)*

DD = currently Data Deficient in KoalaSAT database.

Pop estimate: Density (D) = 0.2325 female koalas ha⁻¹; Population estimate (N) = [PKH x AoO (± 95% CL)] x D/2” (7)

| | Area (ha) | No. Sites | No. +ve Sites | Naïve Occupancy (AoO) | Area of PKH (ha) | Population Estimation (N) |
|--------------------|-----------|-----------|---------------|-----------------------|------------------|---------------------------|
| Mullungdung | 20,644 | 416 | 65 | 15.63+-3.50 | 6,666 | 489+-109 |
| Won Wron | 10,097 | 306 | 43 | 14.01+-3.90 | 2805 | 181+-51 |
| Overall | 30,741 | 722 | 108 | 14.94+-2.60 | 9,471 | 670+-160 |

“Occupancy can be measured as the proportion of sites where a species is detected during surveys (i.e., naïve occupancy), but is more commonly modeled by surveying sites multiple times to estimate detection probability and address false-positive survey errors (sites that are occupied but with no survey detections of the species). This results in an unbiased estimate of occupancy, but at the expense of more effort.” (8)

Primary koala habitat is capable of sustaining high numbers of koalas >0.5 koalas ha, whereas secondary koala habitat can sustain numbers <0.1 koala ha. *“Collectively ‘Primary’ and ‘Secondary’ habitat classifications function to identify areas of PKH” (9)*

Amis in November 2025 surmised possible koala numbers at Mullungdung at ~360 and Won Wron ~260 based on populations estimates of previous koala studies in the Strzelecki’s. eg 0.25 koalas/ha in best habitat of Strzelecki’s (3), 0.09 koalas/ha over 10,500ha in South Gippsland (945 animals), including areas studied in 2014 (4).

It is feasible that approximately 30 Mountain Grey Gum and 3 Blue Gum riparian locations located by FoE, covering only 238 ha at Mullungdung and Won Wron (see below) could contain ~119 animals or ~20% the population of both forests in only 0.8% of both forests. These riparian areas and surrounding therefore are of the utmost significance. Preferred koala habitat, as determine by Biosis represents ~30% of both forest areas.



269ha of highest number of koala scats. Red = Mountain Grey Gum, Mauve=Swamp Gum, Green=Bluegum, Dark Mauve=Swamp Gum/Manna Gum, Light Blue=Messmate/Yellow Stringybark, Yellow=Manna Gum

For some years, FoE has used an approximate estimate of the entire Strzelecki koala population at between 1500-2500 animals, work by Biolink and now FoE would suggest 1600 koalas in ~20,000ha of Won Wron and

Mullungdung and 10,500ha in other studied areas of South Gippsland, including the Strzelecki Ranges, probably meaning an entire Strzelecki koala population more than 2500-3000 animals.

DRONE SURVEYS

In October 2025, FoE employed the services of Field Master Systems to conduct two night drone surveys of 100 hectares of forest at Won Wron and 100 hectares of forest at Mullungdung. The sites were chosen due to high numbers of scats located during previous FoE surveys. (FoE’s pre-flight estimates at Won Wron were 12-15 koalas and estimates at the Mullungdung Site being 10-12 koalas).

The Won Wron site contained the largest extent of blue gums at either Won Wron or Mullungdung. Bluegum was determined by Phillips/Wallis 2016 to be a Preferred Koala Feed Tree (PKFT) in South Gippsland.

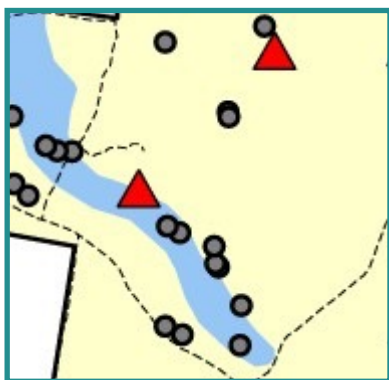
The Mullungdung site, located within the northern section of the Mullungdung Flora and Fauna Reserve was chosen due to it containing about ~10 hectares of Creekline Herb Rich Woodland with ~90 hectares containing stands of yellow stringybark Plains Grassy Woodland.

An estimation of koala numbers was necessary to differentiate between the two forest types.

Won Wron Site. Scats and Positive survey sites 2025

Drone Results Won Wron:

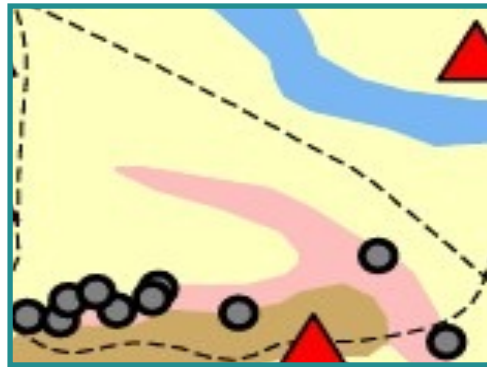
12 koalas (0.12 koalas/ha) were located by the drone with 4 Greater Gliders also found in the study area. ~10ha of the flight zone was riparian zone with 5 koalas found in or near the bluegum dominated riparian zone (0.5koalas/ha). 7 other koalas were located in 90ha being Plains Grassy Forest (0.078koalas/ha). The drone found that a large portion of the area had been previously burnt in 2009 and in some areas tree growth was sparse. This small 100 ha area could contain 7% of all koalas at Won Wron, with the small riparian zone of most importance.



Won Wron Site.
Scats and Positive survey sites 2025



Drone image showing koala in tree at Won Wron



Mullungdung Site: Scats and Positive survey sites 2023

Drone Results Mullungdung:

The Drone flight at Mullungdung found 10 koalas and 2 greater gliders within the 100 hectare site. (0.1 koalas/ha). The site consisted of ~20ha of Creekline Herb Rich woodland, 70ha of plains grassy woodland and 10ha of Clay Heathland. 9 koalas were found in the Creekline Herb Rich Woodland (0.455 koalas/ha), with one koala (0.011 koalas/ha) found in the plains grassy forest. Again, the drones validated what had been found by the SAT surveys. Amis surmised in 2023 that most of Mullungdung forests, away from PKH would contain a koala population of 0.02 koalas/ha.



Mullungdung Koala seen by drone

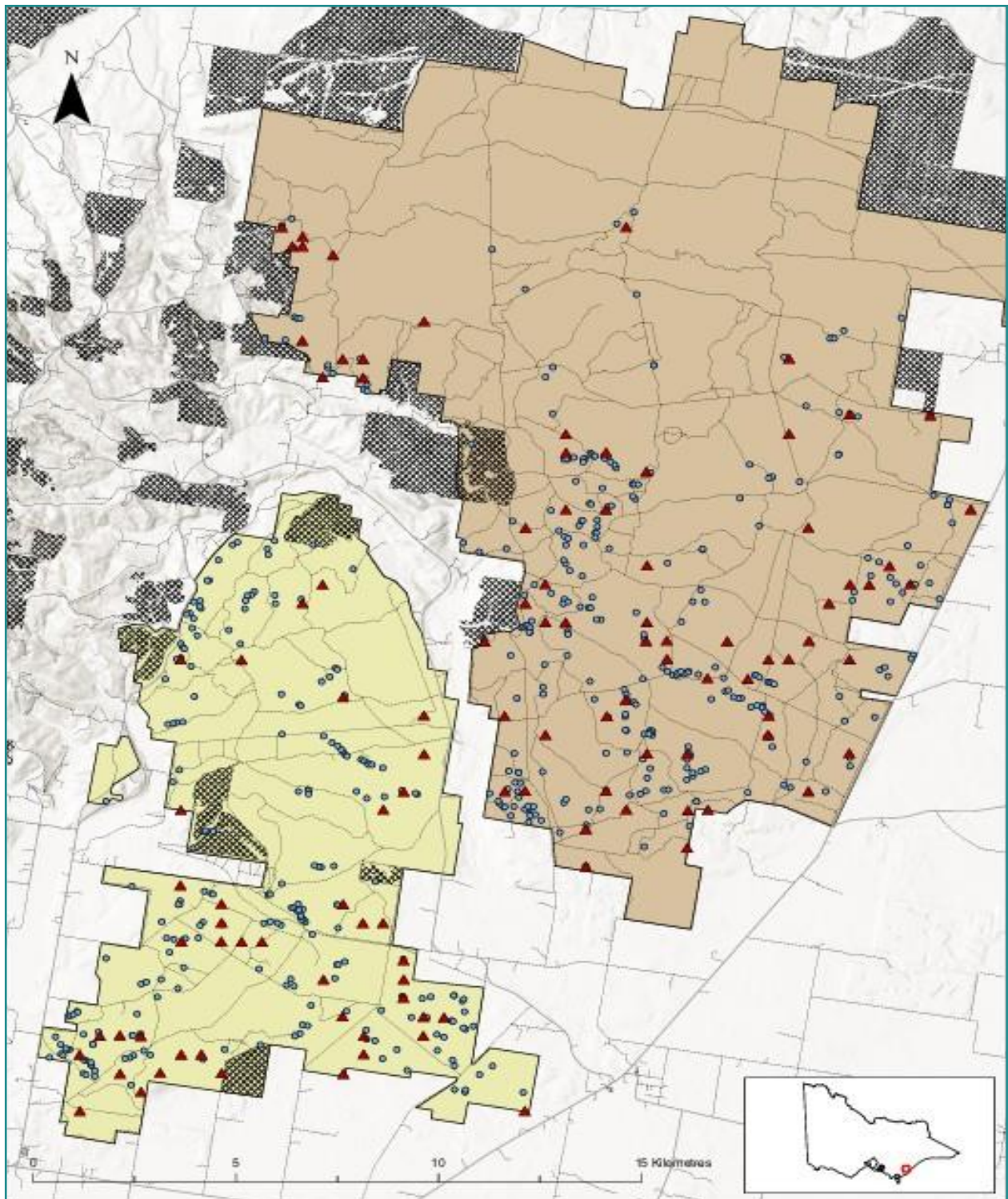
This small 100 ha area could contain 2% of all koalas at Mullungdung, with Riparian zones accounting for 90% of numbers. The drone footage also made clear the lack of koalas (and wildlife in general) away from the riparian zone in stands dominated by Yellow Stringybark.

All of FoE's koala scat information has now been added to the Victorian Biodiversity Atlas and should have profound impacts on how Mullungdung and Won Wron are managed into the future including fire management.



One of six greater gliders seen by the drone flights. Gliders have been seen in much of the habitat favoured by koalas at Mullungdung and Won Wron.

KOALA SCATS AND POSITIVE SITES



- Mullungdung
- Won Wron
- ▲ Positive Survey Sites
- Koala Scat Location (Random)
- ▨ Plantation Area
- Road (Sealed)
- - - Road (Unsealed)

Project: Koala Surveys (Gippsland)
Organisation: Friends of the Earth
Date Produced: 17-09-2025
Coordinate System: GDA2020 MGA Zone 55

| All Trees Surveyed (including random scat trees) 2020-2025 | | |
|---|--------------------|-----------------|
| Species | Mullungdung | Won Wron |
| Yellow Stringybark* | 973 | 806 |
| Messmate* | 584 | 236 |
| Yertchuk | 334 | 432 |
| Mountain Grey Gum | 253 | 152 |
| Swamp Gum | 124 | 49 |
| Coastal Grey Box | 121 | 5 |
| Narrow Leaf Peppermint | 99 | 100 |
| But But** | 80 | 59 |
| Banksia sp. | 24 | 111 |
| Manna Gum *** | 40 | 87 |
| Apple Top Box** | 41 | 43 |
| Mealy Stringybark | 53 | 0 |
| Silvertop Ash | 41 | 11 |
| Shining Peppermint?**** | 35 | 18 |
| Blue Gum | 7 | 48 |
| Brown Stringybark | 4 | 19 |
| White Stringybark | 15 | 0 |
| Gippsland Swamp Box | 13 | 1 |
| Silver Wattle | 0 | 10 |
| Casuarina sp. | 4 | 3 |
| Blackwood | 2 | 0 |

| RGB-SAT Swamp Gum Surveys November 2025 | | |
|--|--------------------|-----------------|
| Species | Mullungdung | Won Wron |
| Yellow Stringybark | 65 | 38 |
| Swamp Gum | 49 | 39 |
| Messmate | 20 | 36 |
| But But** | 7 | 19 |
| Narrow Leaf Peppermint | 14 | 3 |
| Apple Top Box** | 11 | 5 |
| Banksia | 12 | 0 |
| Silver Wattle | 0 | 8 |
| Blackwood | 2 | 1 |
| Manna Gum | 0 | 1 |

**At Mullungdung it was theorised that there could potentially be ‘hybridisation’ between Yellow Stringybark and Messmate. In some areas the seed pods appeared to be Yellow Stringybark, but leaves appeared to be Messmate. This is unlikely as hybridisation between only been found on Wilsons Promontory (Eucalyptus obliqua var. x discocarp)*

*** Differentiation between But But and younger Apple Top Box was extremely difficult.*

****Includes subspecies Pryoriana*

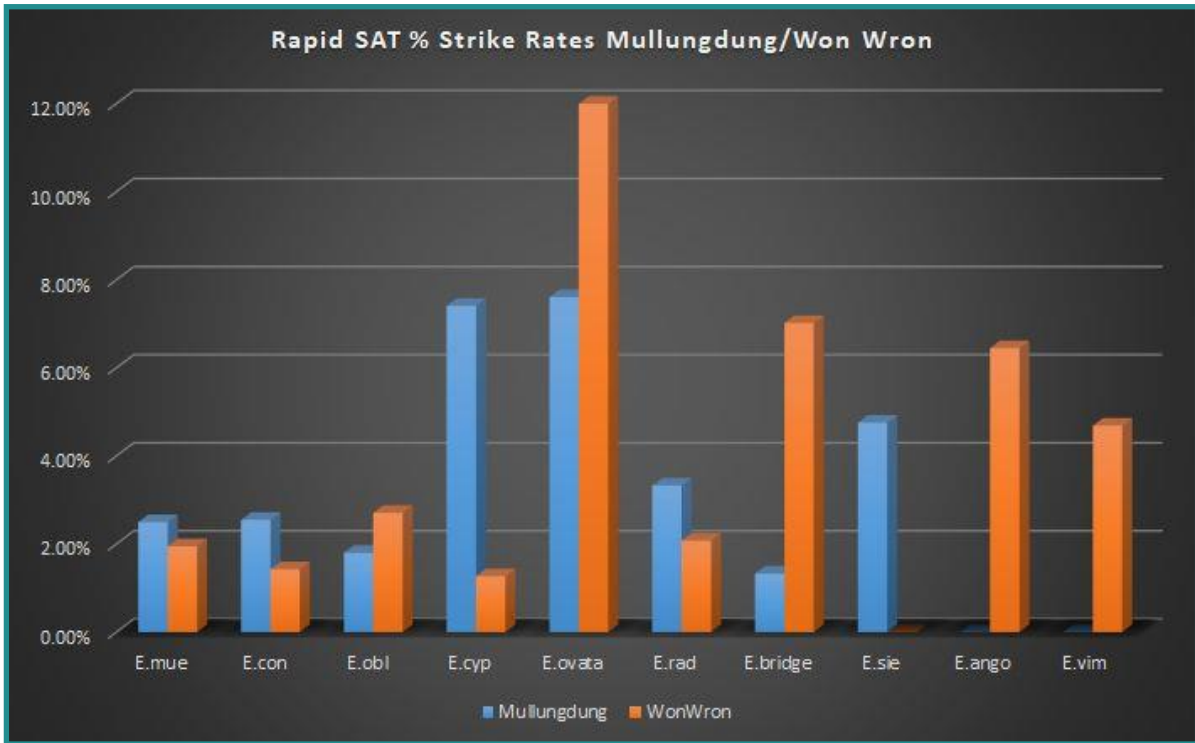
*****Like to be a variation of Narrow Leaf Peppermint. Atlas of Living Australia shows one record of Shining Peppermint in northern Mullungdung. Several records at Holey Plains and none at Won Wron.*



Koala scratch marks on a Yellow Stringybark in Won Wron State Forest

| Trees Surveyed at Mullungdung and Won Wron at Survey Sites* | | | |
|--|-----------------------|--------------|----------------------|
| Species | Trees surveyed | Scats | Strike Rate** |
| Swamp Gum | 117 | 10 | 8.55% |
| Mountain Grey Gum | 214 | 11 | 5.14% |
| Silvertop Ash | 53 | 2 | 3.77% |
| But But | 126 | 4 | 3.17% |
| Apple Top Box | 67 | 2 | 2.99% |
| Narrow Leaf Peppermint | 171 | 5 | 2.92% |
| Yellow Stringybark | 1671 | 37 | 2.21% |
| Messmate | 760 | 15 | 1.97% |
| Yertchuk | 734 | 14 | 1.91% |
| Manna Gum | 71 | 1 | 1.39% |

*At designated survey sites only 10 tree species recorded scats under them. (** strike rates are determined by dividing number of scats by the amount of trees surveyed). Surveys sites* consist of up to 7 trees including centre tree.*



At survey sites at Mullungdung and Won Wron, Swamp Gum had the highest strike rate, particularly at Won Wron. Mountain Grey Gum strike rates dropped considerably at Won Wron. No scats under Bluegums were located at 8 Won Wron survey sites.

| Scats collected at random locations at Mullungdung and Won Wron State Forests | |
|---|-------|
| Tree Species | Scats |
| Mountain Grey Gum | 191 |
| Yellow Stringybark | 78 |
| Swamp Gum | 55 |
| Messmate | 41 |
| Manna Gum | 33 |
| Yertchuk | 32 |
| Apple Top Box | 17 |
| Blue Gum | 11 |
| Narrow Leaf Peppermint | 10 |
| But But | 7 |
| Coastal Grey Box | 5 |
| Shining Peppermint | 3 |
| Silver Wattle | 1 |

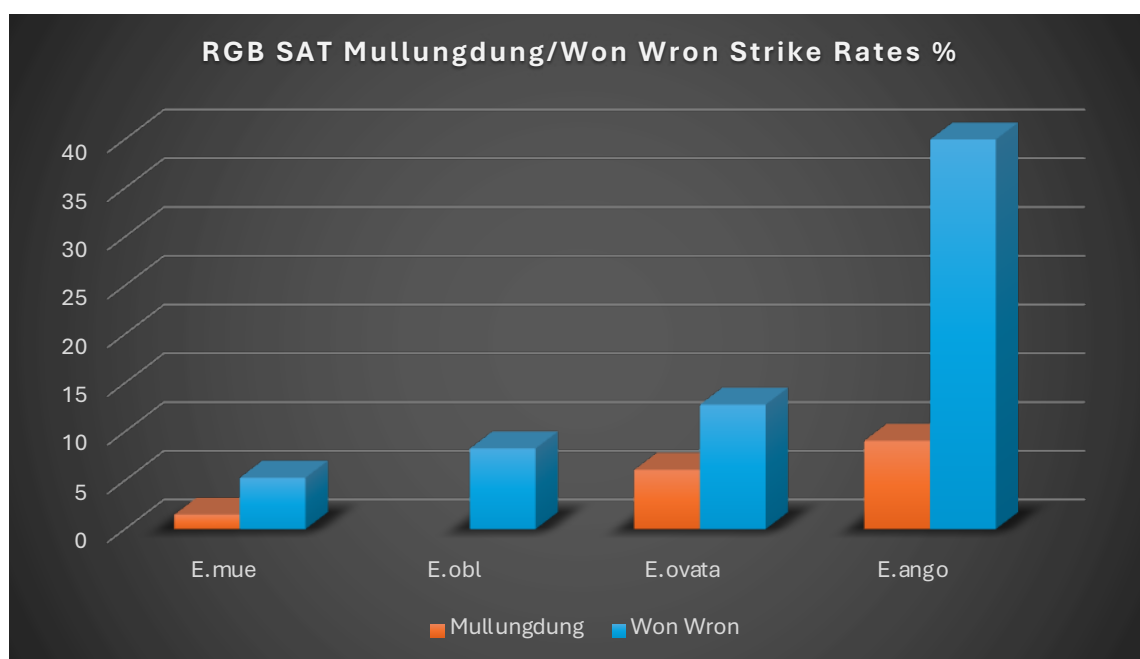
A Strike rates for scats collected randomly could not be quantified. Random scats were selected in walks in-between survey sites and by targeting key riparian areas, particularly those containing Mountain Grey Gum. It was clear that Mountain Grey Gum was clearly a significant preferred koala feed tree in both forests, particularly at Mullungdung. Mountain Grey Gum is more common at Mullungdung than Swamp Gum.



An example of a Mountain Grey Gum at Mullungdung.

Swamp Gum (*E.ovata*) recorded the highest strike rates at RAPID SAT sites in both forests. There was a notable decline in strike rates for Mountain Grey Gum (*E.cypellocarpa*) at Won Wron. This could be because large areas of Mountain Grey Gum forest at Won Wron is

covered with bracken, which may be reducing nutrient loads of the Mountain Grey Gum leaves. There were correspondingly higher strikes for But But (*E.bridgesiana*), Apple Top Box (*E.angophoroides*) and Manna Gum (*E.viminalis*) at Won Wron.

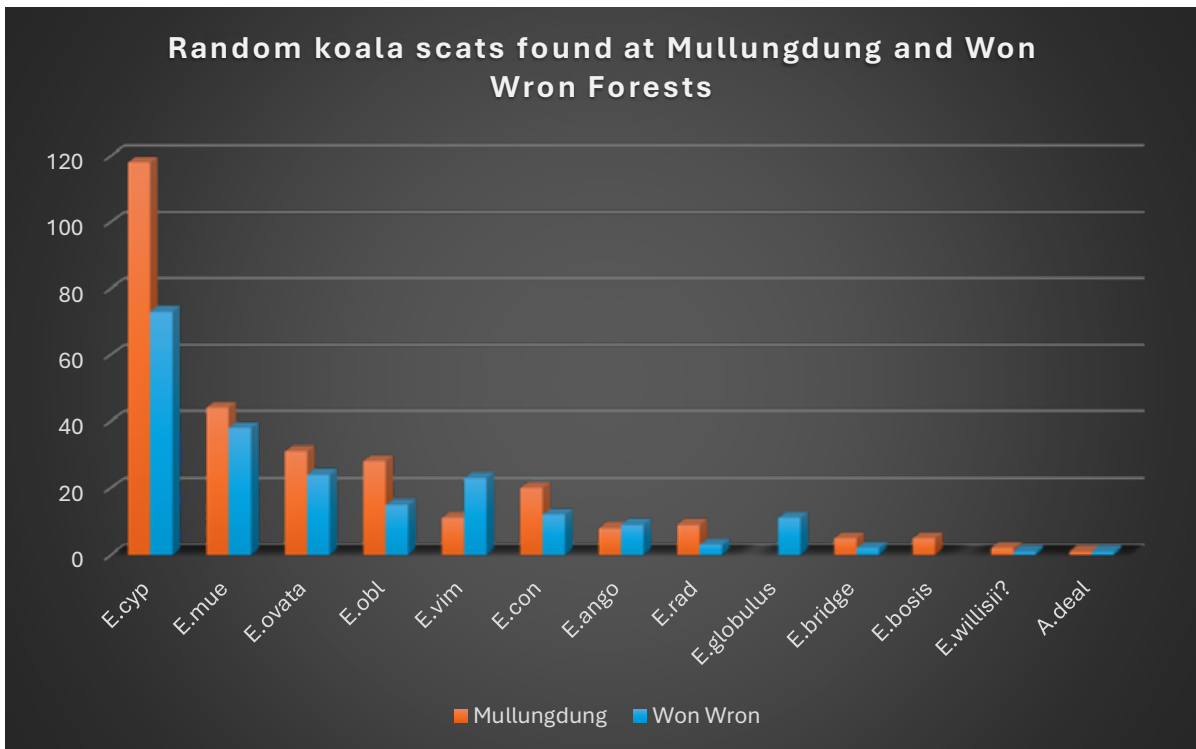


Strike rates at 11 sites consisting of 330 trees using Regularised Grid-based SAT (RGB-SAT) 30 tree survey sites. Only 5 *E.angophoroides* trees

were surveyed with 2 positive trees. *E.ovata* strike rates at Mullungdung were 6.1% with higher rates at Won Wron (12.8%).

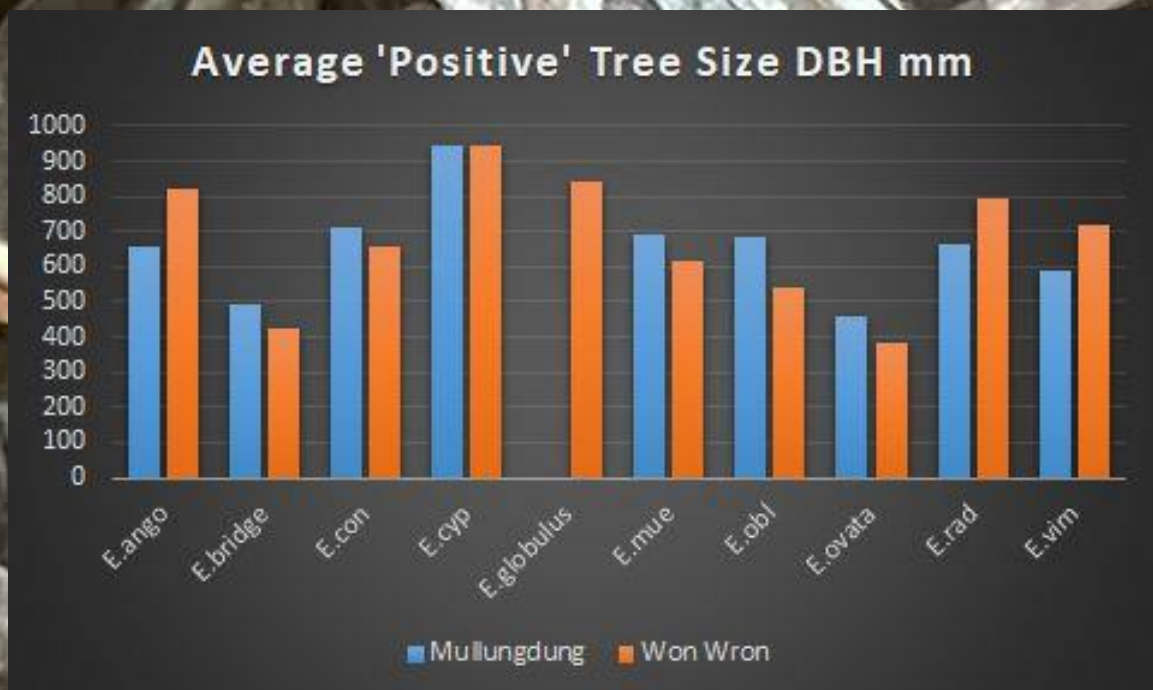
| Strike Rates RAPID SAT 7 tree sites | | | | |
|-------------------------------------|-------------|-------------|----------|-------------|
| Species | Mullungdung | Scats/Trees | Won Wron | Scats/Trees |
| <i>E.ovata</i> | 7.61% | 7/92 | 12% | 3/25 |
| <i>E.cypellocarpa</i> | 7.41% | 10/135 | 1.27% | 1/79 |
| <i>E.bridge</i> | 1.33% | 1/75 | 7.02% | 4/57 |
| <i>E.viminalis</i> | 0.00% | 0/29 | 7.61% | 3/64 |
| <i>E.angophoroides</i> | 0.00% | 0/33 | 5.88% | 2/34 |
| <i>E.radiata</i> | 3.33% | 3/90 | 2.08% | 2/96 |
| <i>E.sieberi</i> | 4.76% | 2/42 | | |
| <i>E.obliqua</i> | 1.8% | 10/556 | 2.71% | 6/221 |
| <i>E.muelleriana</i> | 2.5% | 23/921 | 1.95% | 15/769 |
| <i>E.consideriana</i> | 2.55% | 8/314 | 3.98% | 6/420 |

| Strike Rates 11 RGB-Sat 30 tree sites | | | | |
|---------------------------------------|-------------|-------------|----------|-------------|
| Species | Mullungdung | Scats/Trees | Won Wron | Scats/Trees |
| E.angophoroides | 9.1% | 1/11 | 40% | 2/5 |
| E.ovata | 6.1% | 3/49 | 12.8% | 5/39 |
| E.obliqua | 0.00% | 0/20 | 8.3% | 3/36 |
| E.muelleriana | 1.5% | 1/65 | 5.3% | 2/38 |



Phillips/Wallis 2016 (4) determined that the key preferred koala feed trees in the Strzelecki Ranges were Mountain Grey Gum (*E.cypelloarpa*), Blue Gum (*E.globulus*) and Strzelecki Gum (*E.strzeleckii*). Mountain Grey Gum as a preferred koala feed tree has been validated at both Mullungdung and Won Wron (62% that of Mullungdung) indicating less amounts of gully line vegetation dominated by Mountain Grey Gums at Won Wron.

Bluegums are only located in a couple of relatively small areas on the western side of Won Wron and in an extremely small area at Mullungdung. Strzelecki Gums are likely to be very isolated at Won Wron and perhaps Mullungdung.



Average tree size where all scats were found at Mullungdung and Won Wron State Forests. Average tree size was slightly higher at Mullungdung 744mm DBH, than Won Wron 713mm DBH. Mountain Grey Gum (*E.cypellocarpa*) in both forests averaged 945mm DBH indicating that koalas prefer older established trees, probably older than 80 years. This is because of the high nutrient leaves from older trees.

“Some Eucalyptus species have the capacity to change the way they process carbon; on low nutrient soils and/or where competition for limited resources such as water exists, free

carbon can be directed towards a phenolic-based defence system which renders many species unpalatable to arboreal marsupials. In contrast, once a certain size-class has been reached and/or the competition for resources is less, surplus carbon can be directed towards new growth.” (4)

The older trees also provide better shelter than younger trees. Mountain Grey Gum size varied in size from 150mm DBH to 2070mm DBH. The only scats found under Bluegums in either forest was a small area in the south west portion of Won Wron, much of which was burnt in a bushfire in 2009. At this location Bluegums with scats under them averaged 839mm DBH.



An example of a Mountain Grey Gum at Mullungdung.

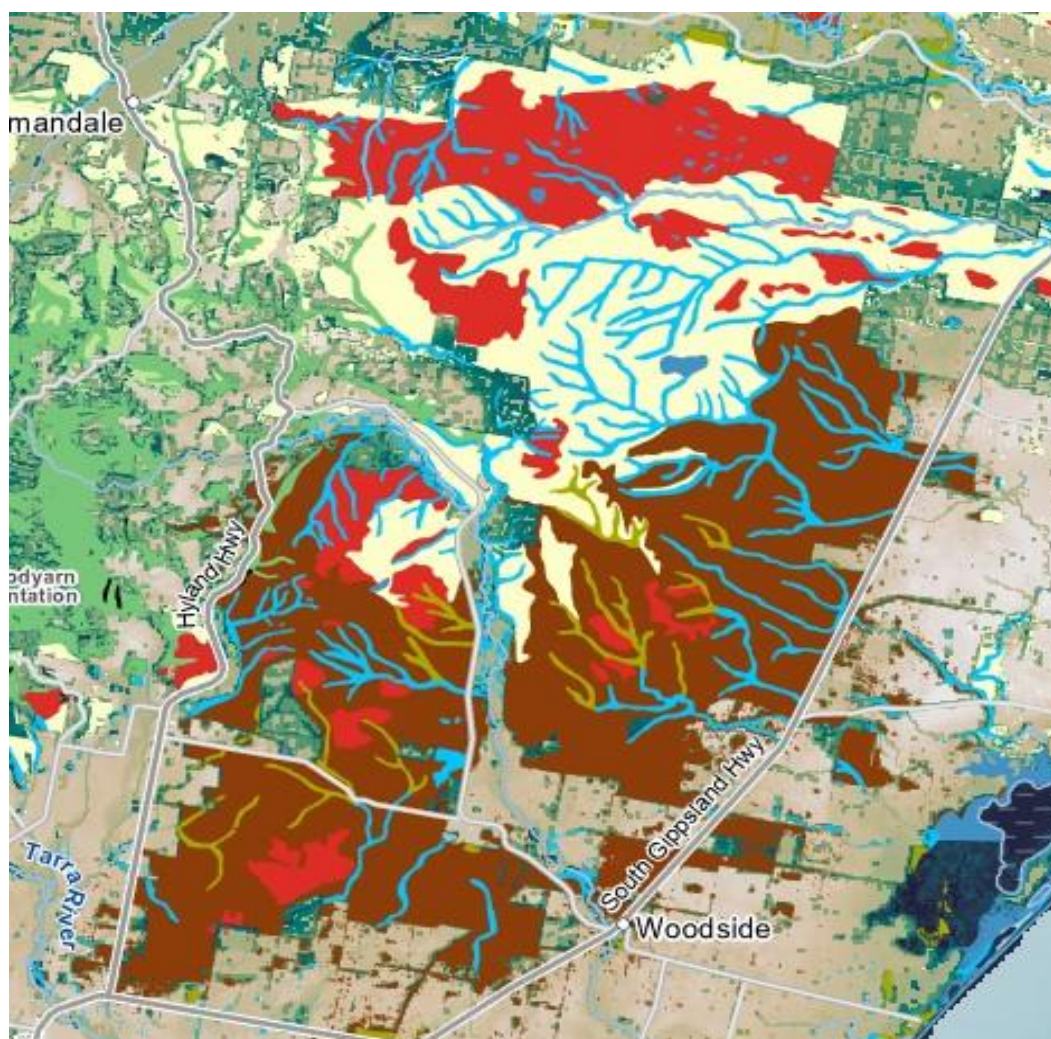


Mullungdung Koala. Photo Carol Tocknell

ECOLOGICAL VEGETATION CLASSES (EVC's)

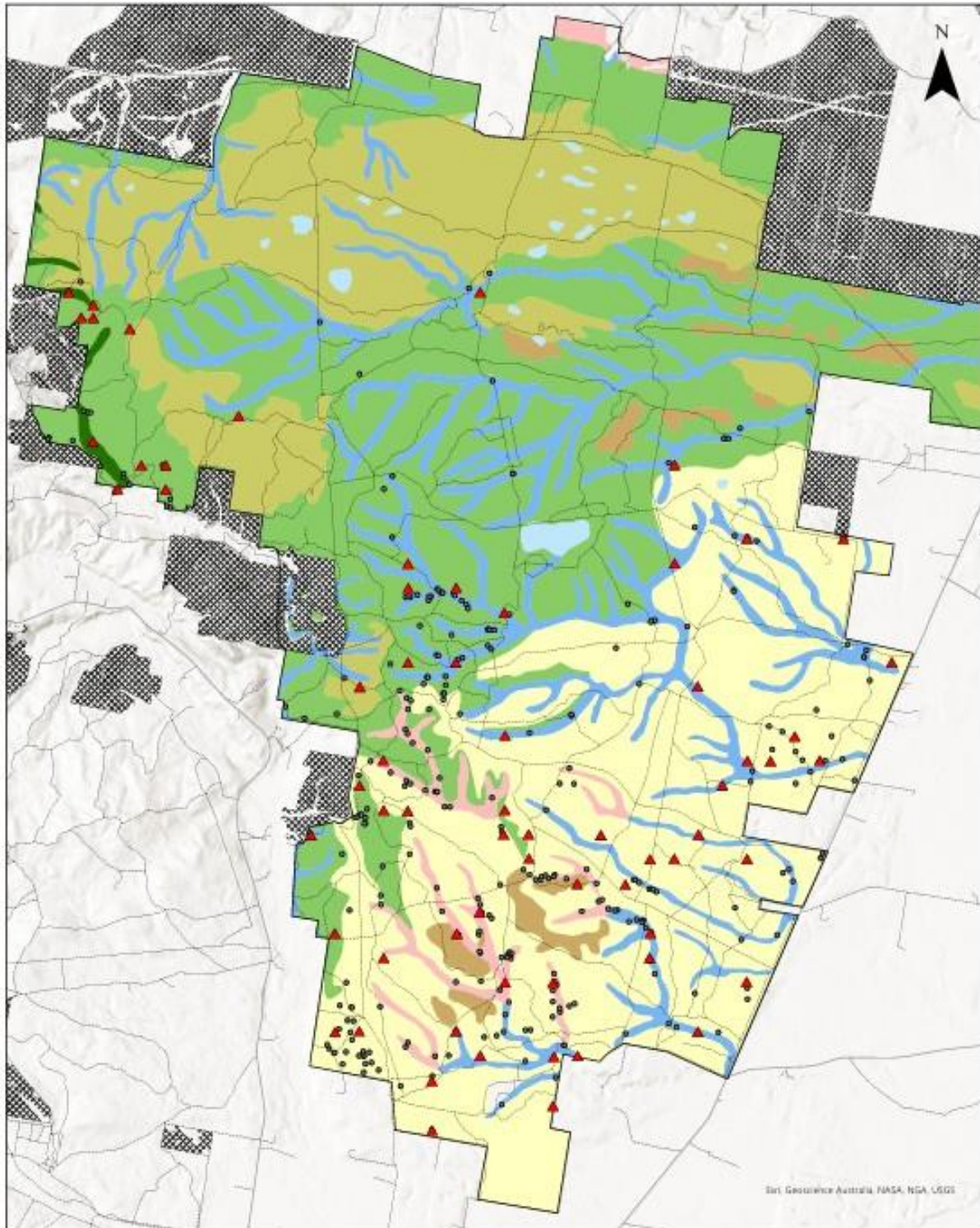
For an inexplicable reason, Mountain Grey Gum is not listed under the Gippsland Plains EVC's as a eucalypt species in Creekline Herb Rich Woodland (CHRW), Riparian Scrub, Lowland Forest or Plains Grassy Woodland. It is listed only under Damp Forest and Wet Forest. Damp forest only covers approximately 90ha at Mullungdung and 130ha at Won Wron.

At Mullungdung, a large portion of the Mountain Grey Gums occur in Creekline Herb Rich Woodland (CHRW) and Riparian Scrub. Some were also located in gully lines in Lowland Forest and Plains Grassy Woodland, but these areas probably should have been mapped on EVC maps as CHRW. Damp forest is the smallest EVC at Mullungdung and some Mountain Grey Gums were also found there.



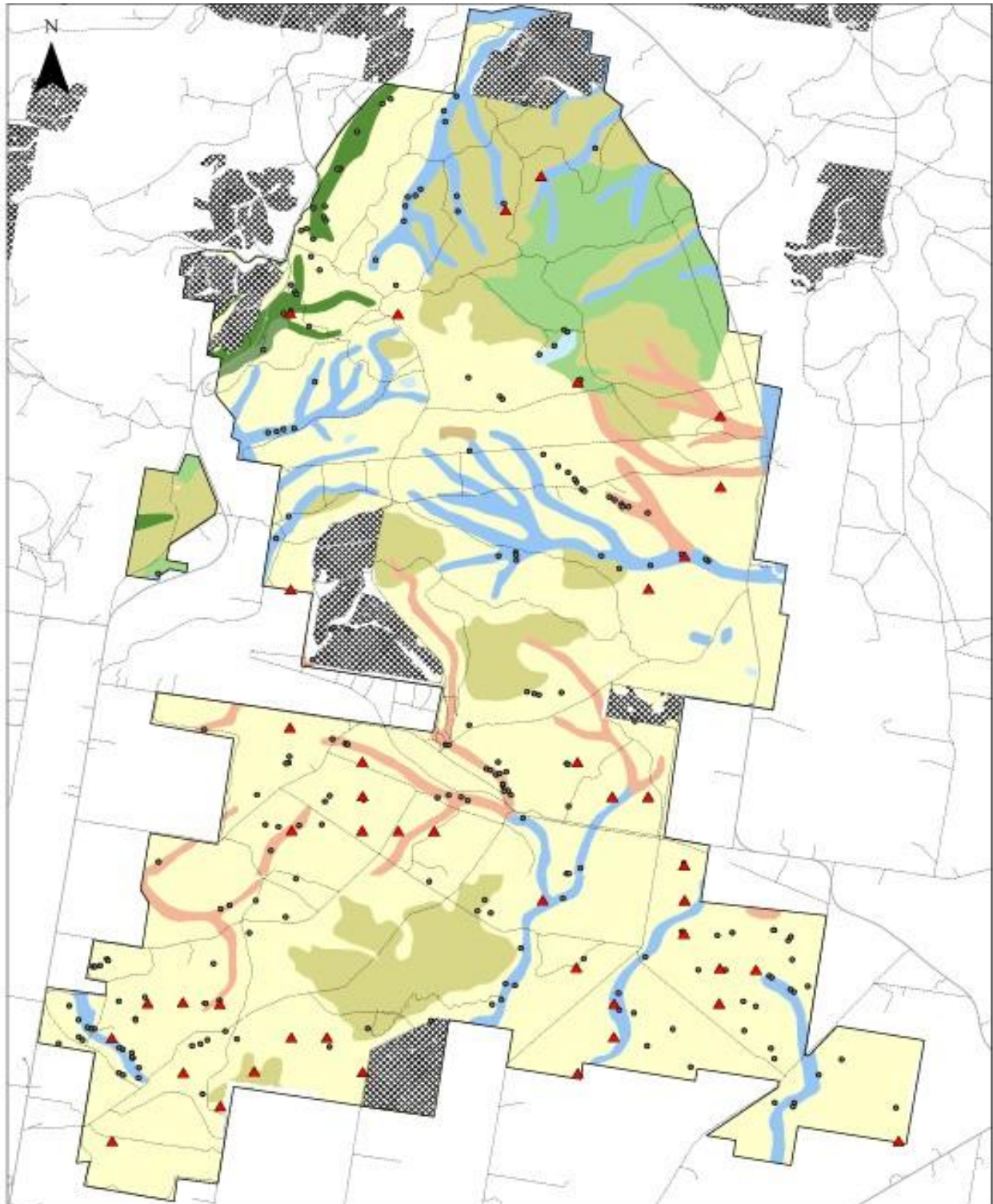
EVC map (10) showing extent of Creekline Herb rich woodland (light green) and riparian zones (in blue) in study area. 50% of koala scats were found in these two EVC's, although they make up ~14% of the forest. Dark brown is Plains Grassy Forest, pale yellow is Lowland Forest.

Mullungung Surveys and Ecological Vegetation Types



- | | | |
|---|---|---|
| <ul style="list-style-type: none"> Heathlands Heathy Woodlands Herb-rich Woodlands Lowland Forests Plains Woodlands or Forests Riparian Scrubs or Swampy Scrubs and Woodlands | <ul style="list-style-type: none"> Wet or Damp Forests Wetlands Positive Survey Sites Koala Scat Location (Random) Plantation Area | <p>Project: Mullungung Surveys (EVC)</p> <p>Organisation: Friends of the Earth</p> <p>Date Produced: 17-09-2025</p> <p>Coordinate System: GDA2020 MGA Zone 55</p> |
|---|---|---|

Won Wron Surveys and Ecological Vegetation Types



- | | |
|--|--------------------------------|
| Heathlands | Wet or Damp Forests |
| Healthy Woodlands | Wetlands |
| Herb-rich Woodlands | ▲ Positive Survey Sites |
| Lowland Forests | ● Koala Scat Location (Random) |
| Plains Woodlands or Forests | ▨ Plantation Area |
| Rainforests | |
| Riparian Scrubs or Swampy Scrubs and Woodlands | |

Project: Won Wron Surveys (EVC)
Organisation: Friends of the Earth
Date Produced: 17-09-2025
Coordinate System:
 GDA2020 MGA Zone 55

The most scats at Mullungdung were found in Riparian Scrub where in some cases both Mountain Grey Gums and Swamp Gum were

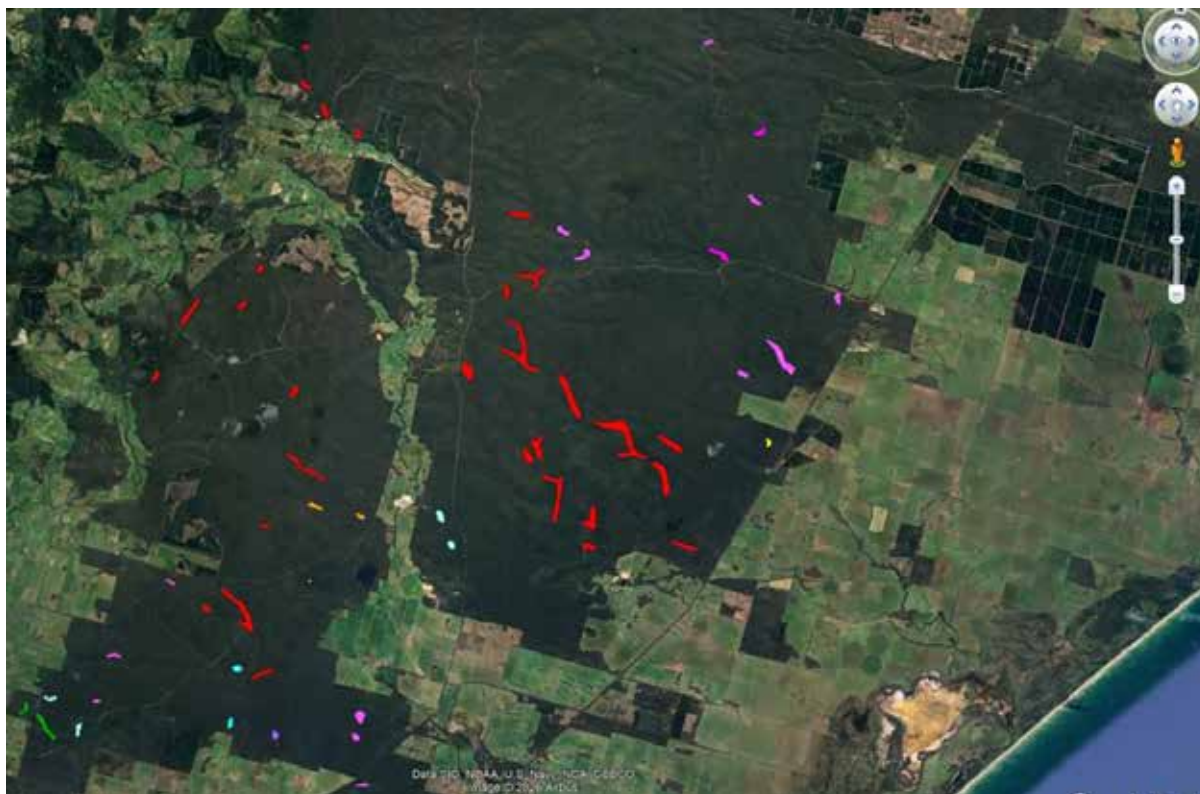
located. Some of the Riparian Scrub should have been mapped as CHRW.

| Koala habitat type | Classification criteria |
|---|---|
| Primary koala habitat | Forest and/or woodland EVCs occurring on soils of medium to high nutrient value whereupon primary PKFTs are dominant or co-dominant components of the tallest stratum. |
| Secondary (Class A) koala habitat | Forest and/or woodland EVCs occurring on soils of medium to high nutrient value whereupon primary PKFTs are sub-dominant components of the tallest stratum. |
| Secondary (Class B) koala habitat | Forest and/or woodland EVCs occurring on soils of low to medium nutrient value whereupon primary PKFTs are absent, the tallest stratum instead dominated or co-dominated by secondary food tree species only. |
| Secondary (Class C) / marginal koala habitat | Forest and/or woodland EVCs occurring on soils of low to medium nutrient value whereupon primary food tree species are absent and secondary food tree species are sub-dominant components of the tallest stratum. |
| Other | Forest and/or woodland EVCs that do not contain PKFTs. |
| Unknown | Vegetation not currently mapped or described. |

“Collectively ‘Primary’ and ‘Secondary’ habitat classifications function to identify areas of PKH” (4)

In 2025 Phillips/Wallis (7) estimated 6,666 hectares of Preferred Koala Habitat (PKH) at Mullungdung and 2,805 hectares of PKH at Won Wron. PKH includes Primary and Secondary koala habitat.

A large amount of Mullungdung and Won Wron would be Class B and Class C. Primary Koala Habitat should only include Mountain Grey Gum sites. Swamp Gum has yet to be determined as a PKFT.



269ha of Primary Koala Habitat as identified by Amis. Red = Mountain Grey Gum, Mauve=Swamp Gum, Green=Bluegum, Dark Mauve=Swamp Gum/Manna Gum, Light Blue=Messmate/Yellow Stringybark, Yellow=Manna Gum

| <i>Koala Hotspots/Primary Koala Habitat >0.5 koalas/ha</i> | | | |
|---|-----------------|------------------------------------|-----------------|
| Mullungdung Key Trees | Hectares | Won Wron Key Trees | Hectares |
| <i>Mountain Grey Gum</i> | <i>140.37</i> | <i>Mountain Grey Gum</i> | <i>45.49</i> |
| <i>Swamp Gum</i> | <i>41.27</i> | <i>Swamp Gum</i> | <i>12.35</i> |
| <i>Yellow Stringybark/Messmate</i> | <i>5.97</i> | <i>Yellow Stringybark/Messmate</i> | <i>8.38</i> |
| <i>Manna Gum</i> | <i>1.16</i> | <i>Swamp Gum/Manna Gum</i> | <i>2.32</i> |
| | | <i>Apple Top Box</i> | <i>3.98</i> |
| | | <i>Blue Gum</i> | <i>8.31</i> |
| Total | 188.77 | Total | 80.83 |

Only the Mountain Grey Gum sites should be referred to as Primary Koala Habitat. The Swamp Gum, Yellow Stringybark, Messmate and Manna Gum sites referred to on the map were included due to the high numbers of scats found at these locations during field work.

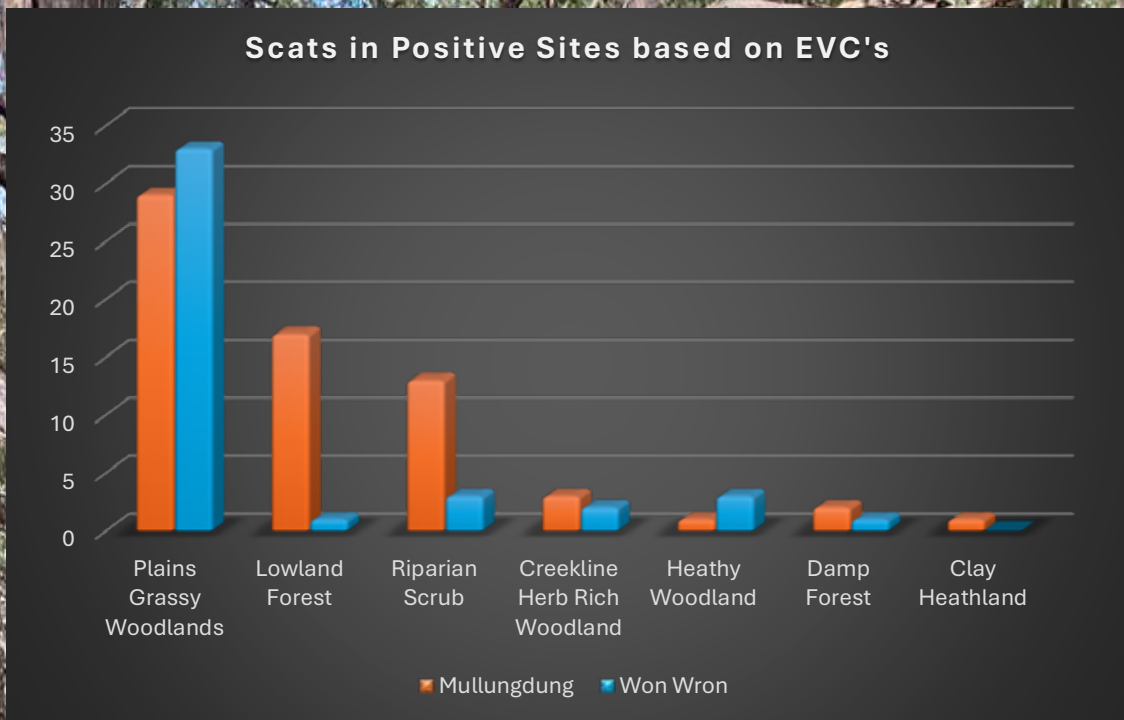
In 2016 Phillips/Wallis (4) determined that the following trees were eaten by koalas but were not preferred koala feed trees in the Strzelecki Ranges.

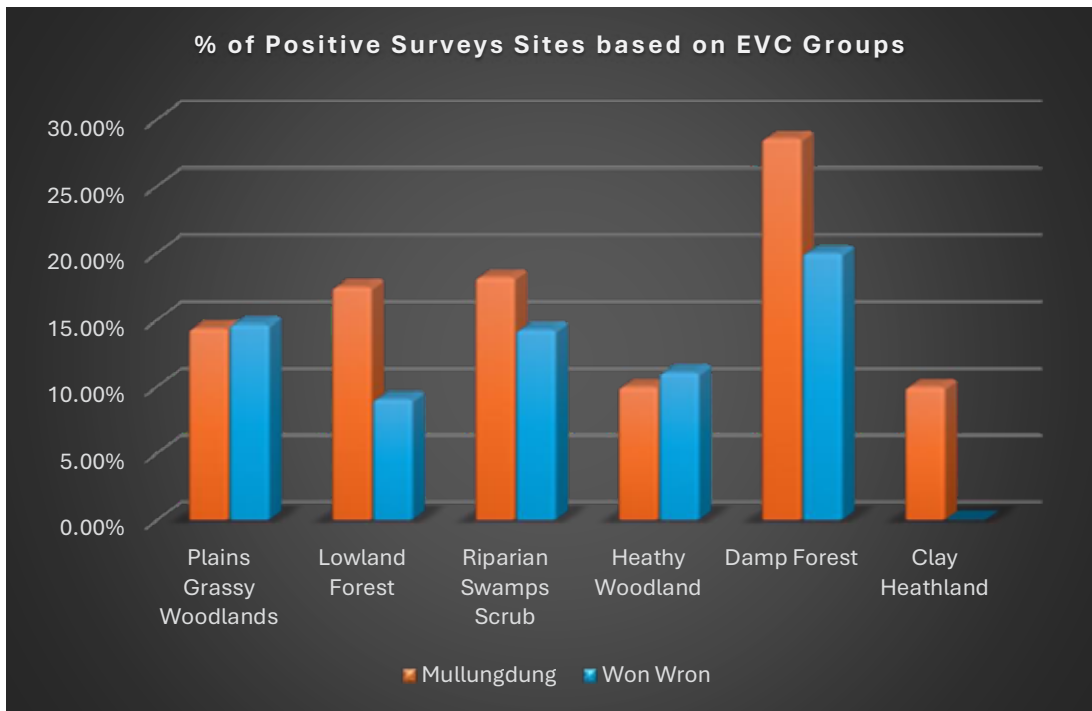
Non PKFTs (4): Swamp Gum (*E. ovata*), Yellow Stringybark (*E. muelleriana*), Mountain Ash (*E. regnans*), Manna Gum (*E. viminalis*), Messmate (*E. obliqua*), Narrow Leaf Peppermint (*E. radiata*), Brown Stringybark (*E. baxteri*), Silver Top Ash (*E. sieberi*), Yertchuk (*E. considiana*)

Others: Apple Top Box (*E. angophoroides*), But But (*E. bridegsiana*), Shining Peppermint (*E. willisii*), Bog Gum (*E. kitsonia*), Shining

Gum (*E. nitens*), Blue Gum (*E. pseudoglobulus*)
 After the Mullungdung and Won Wron surveys Apple Top Box (*E. angophoroides*) and But But (*E. bridegsiana*) should be added to the Non PKFT list.

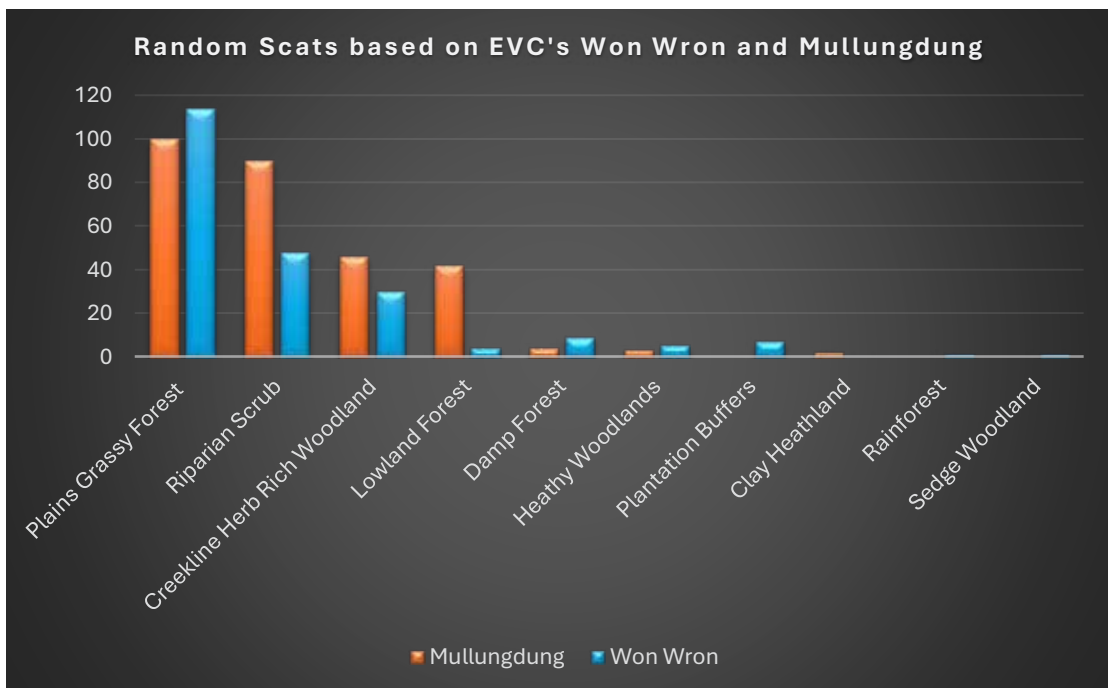
Scats located at Mullungdung and Won Wron were primarily found in Plains Grassy Woodlands, with Mullungdung having more scats in Lowland Forest and Riparian Scrub.





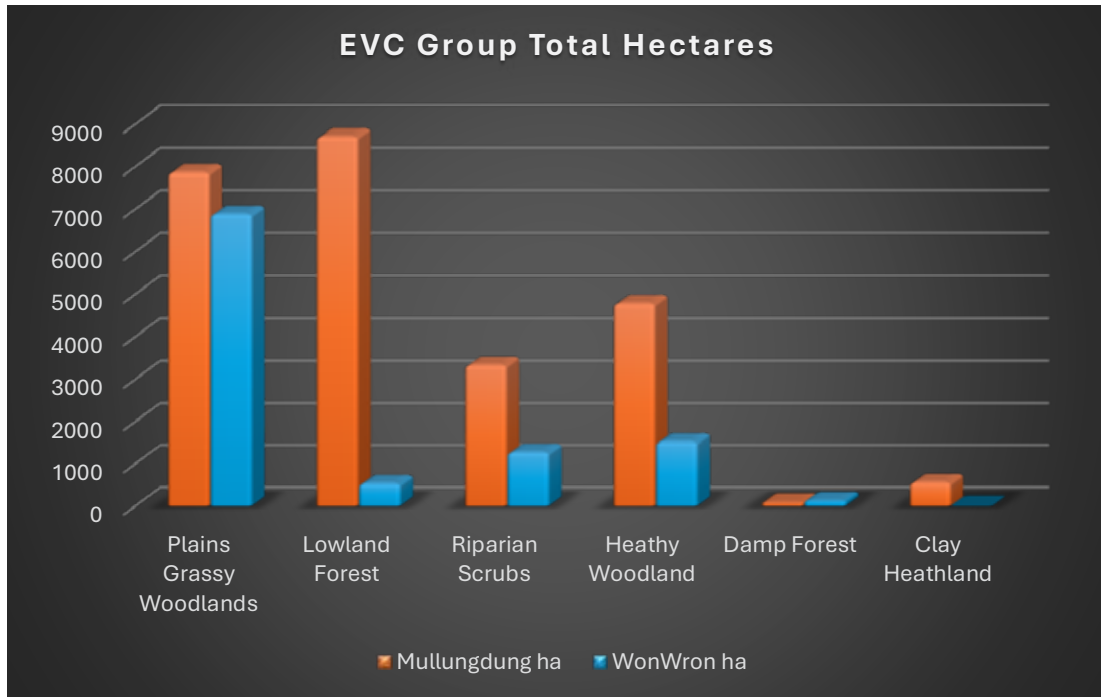
Based on EVC groups, the highest percentage rates of positive sites were in damp forest, but both are limited to 240 hectares in both Won Wron and Mullungdung. ~60% of positive sites at Mullungdung were in or

close to riparian zones, with ~42% at Won Wron. These included sites in Plains Grassy Woodlands, Lowland Forest and Damp Forest.



~63% of random scats were found in or near riparian zones at Won Wron with ~80% at Mullungdung indicating that Creekline Herb Rich Woodland and Riparian Scrub are the most significant factor regarding survival

of koalas in both forests. At Won Wron there appears to be higher koala prevalence in Plains Grassy Forest (dominated by Yellow Stringybark) in the southern half of the forest.



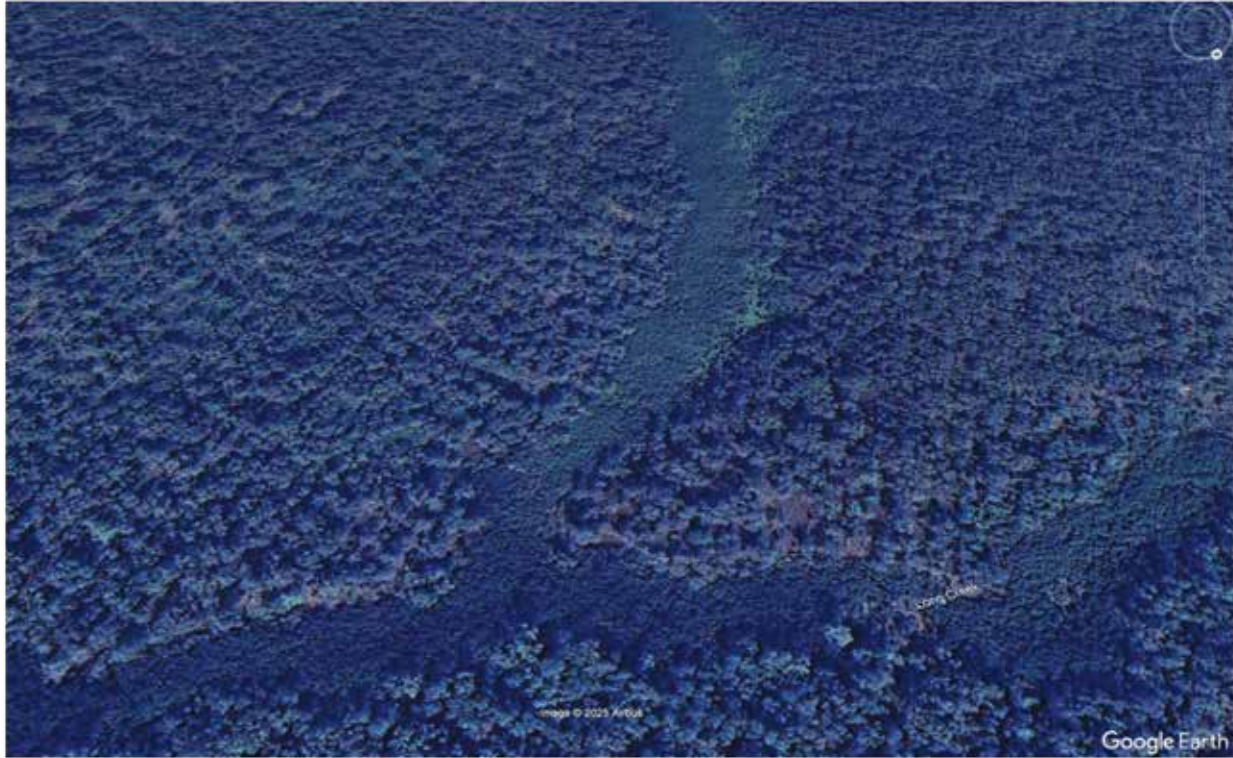
Plains Woodland or Forests dominates the EVC group totals at Won Wron (66%) in comparison to Mullungdung (30%).

Lowland Forests are more frequent at Mullungdung (33%) in comparison to Won Wron (5.2%)



Creekline Herb Rich Woodland (CHRW) covers about 464ha at Mullungdung, a large portion 30%+ of which would be Primary Koala Habitat.

Riparian Scrubs or Swampy Scrubs and Woodlands



Large areas of Riparian Scrub also show no signs of Eucalypts. This section of Long Creek in the north of Mullungdung has 2km of riparian vegetation with no eucalypts within it.

Mullungdung: Riparian Scrub covers ~3020ha. However, possibly up to 50% of riparian scrub, particularly in the north contains non-PKFT's or no eucalypts at all. Some riparian scrub could also be classified as CHRW and vice versa.

Won Wron: Riparian Scrubs/Swampy Scrubs only cover ~25% of Won Wron (865ha) in comparison to Mullungdung (~3000ha). All scats located at Won Wron in CHRW in comparison to Mullungdung are 65% of what was found at Mullungdung. All scats at Won Wron in Riparian Scrub are only 49% that of Mullungdung. Areas at Won Wron that do not have key PKFT's at least do mostly have

eucalypts present probably indicating closer to 75% utilisation at Won Wron in comparison to 60-70% at Mullungdung.

Key stands of Mountain Grey Gum are also less apparent and less popular with koalas in Won Wron. 9 key Mountain Grey Gum areas occur at Won Wron in comparison to ~19 at Mullungdung. One key area near The Gums Track at Won Wron has high numbers of koalas due to the most extensive stand of bluegum occurring in both Won Wron and Mullungdung. Only a couple of isolated bluegums, plus some regeneration sites (due to phytophthora) were located at Mullungdung.

Lowland Forest

Mullungdung: 8700ha. Surrounding Lowland forest in close vicinity to the best quality CHRW and Riparian Scrub would most likely see a higher number of koalas than in most Lowland Forest.

Won Wron: Lowland forest at Won Wron is only 6% that of Mullungdung. Few scats were found in lowland forest at Won Wron, although one site south of Grasree Swamp was positive. Mountain Grey Gums were also observed near Grass Tree Swamp with 4 scats located. Riparian areas within the Won Wron forest were also positive.

Mullungdung: Plains Grassy Forest at Mullungdung covers about 7872ha, with about 500ha of this not really suitable for koalas due possibly of misclassification of Heathy Woodland with limited eucalypts present.

Two areas of Mullungdung saw higher levels of koala activity in Plains Grassy forest, these being ~200ha of forest in the south west section of Mullungdung, west of Old Rosedale Road and north of Williams Road and 300ha of forest west of the South Gippsland Highway and south of Joyces Road. About 500ha of Plains Grassy Forest would also have higher koala numbers due to being located in close proximity riparian zones.

Won Wron: 6887ha Plains-Grassy Forest at Won Wron is 87% the size of equivalent forest type at Mullungdung. Yetchuk dominated plains grassy forest in the north of the forest (~4200ha north of Lowes Road) showed limited signs of koalas (except in one or two areas) other than in mainly drainage lines (one main one covering about 50 hectares should actually have been mapped as CHRW).

However, the situation changes in the southern portion of Won Wron south of Lowes Road.

Plains Grassy Forest

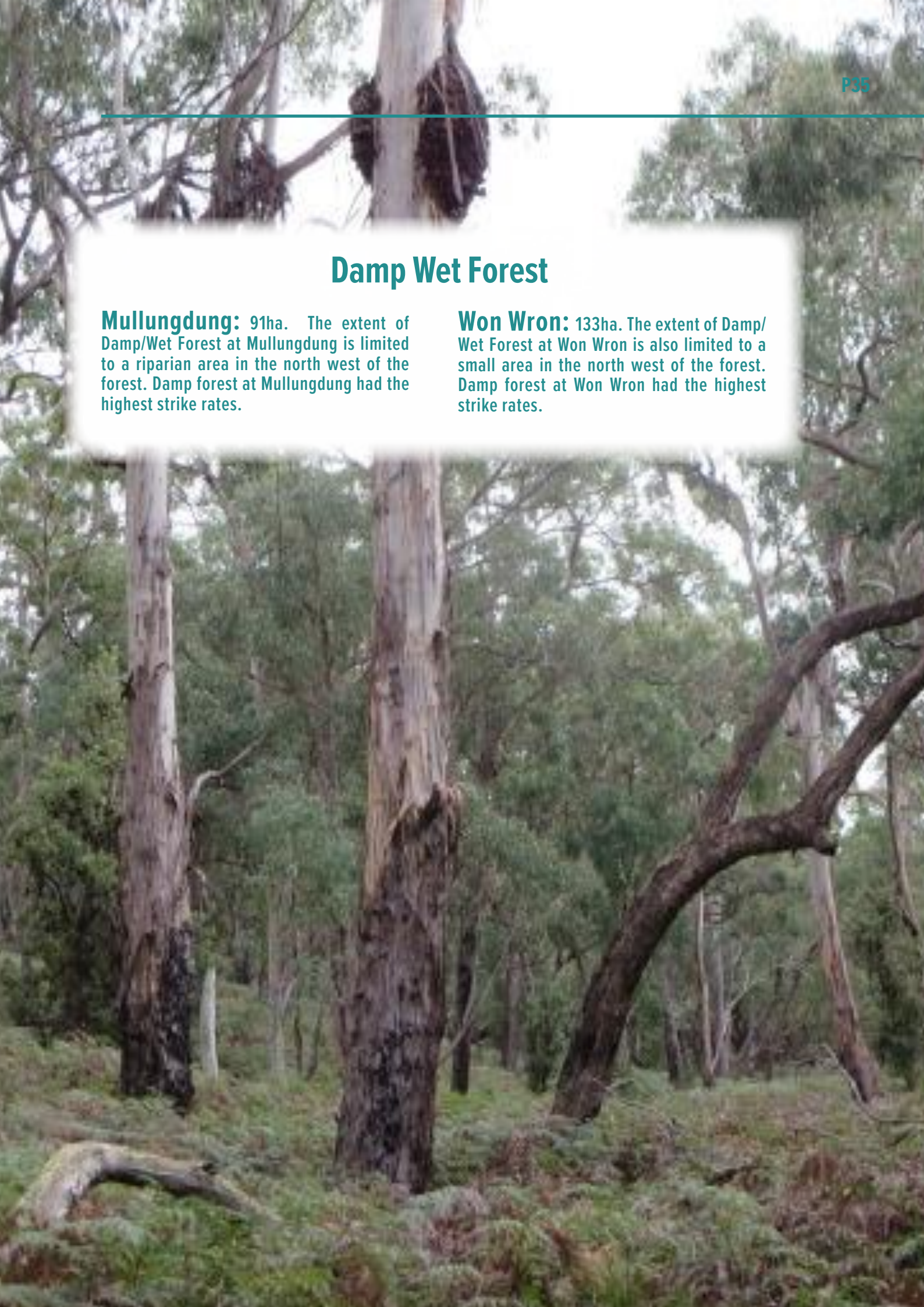


Yetchuk forest in northern Won Wron forest.

Damp Wet Forest

Mullungdung: 91ha. The extent of Damp/Wet Forest at Mullungdung is limited to a riparian area in the north west of the forest. Damp forest at Mullungdung had the highest strike rates.

Won Wron: 133ha. The extent of Damp/Wet Forest at Won Wron is also limited to a small area in the north west of the forest. Damp forest at Won Wron had the highest strike rates.



Healthy Woodlands/Clay Heathlands

Mullungdung: 4788ha. Numbers in these forest types are the most difficult to quantify as they weren't extensively surveyed. These type of forests, dominate the northern quarter of Mullungdung. Only 5% of this forest type was surveyed, due in part to difficulty of much of the terrain and lack of PKFT's. Any positive sites or scat finds were always located on the edge of this EVC with riparian forest nearby. Further work needs to be done in this forest type to determine extent of koala utilisation. Manna Gum and possibly Swamp Gum (particularly in northern Mullungdung) could mean koala presence in these forest types.

Won Wron: 1530ha Few scats were found in this forest type at Won Wron only when it was in close proximity to plains grassy forest or riparian zones. It is unlikely that koalas heavily utilise these forest types consisting mainly of Banksia, yertchuk and narrow leaf peppermint, with manna gums in the southern parts of Won Wron.



Motorbike trails criss-cross Mullungdung State Forest. Hundreds of km's of illegal tracks (11) have been created over the past few years including in riparian areas and conservation reserves. The other major issue other than fire management is firewood cutting, including illegal cutting (12).

SOILS

Almost all of the soils at Mullungdung and Won Wron are sedimentary. Biolink (2016) found that PKFT's on sedimentary lithiographic units and associated soil landscapes were Mountain Grey Gum, Bluegum and Strzelecki Gum* but at strike rates lower than Fine to Coarse Textured Unconsolidated Deposits. (4) (*Strzelecki Gum does occur very infrequently near Won Wron and Mullungdung. But none were sampled).

The major differences in soil type between Mullungdung and Won Wron are higher areas of Gormandale based soils at Won Wron with older Tertiary soils (Stockdale) over larger areas at Mullungdung. A larger percentage of Won Wron is dunefield, and larger percentage of Mullungdung being undulating plains.

The dominant soils are Podsoils (with a sandy portion which can mean low levels of moisture and nutrients) and Rudosols (soils have limited soil structure and are sandy).

A large portion of the forests also contain Sodosols (soils with loam topsoils to sodic subsoils).

The highest number of koala scats at Mullungdung were concentrated on areas of Mountain Grey Gum growing on Stockdale and Stockdale with Gormandale soil classifications. These areas were largely along gully lines, where nutrients were higher.

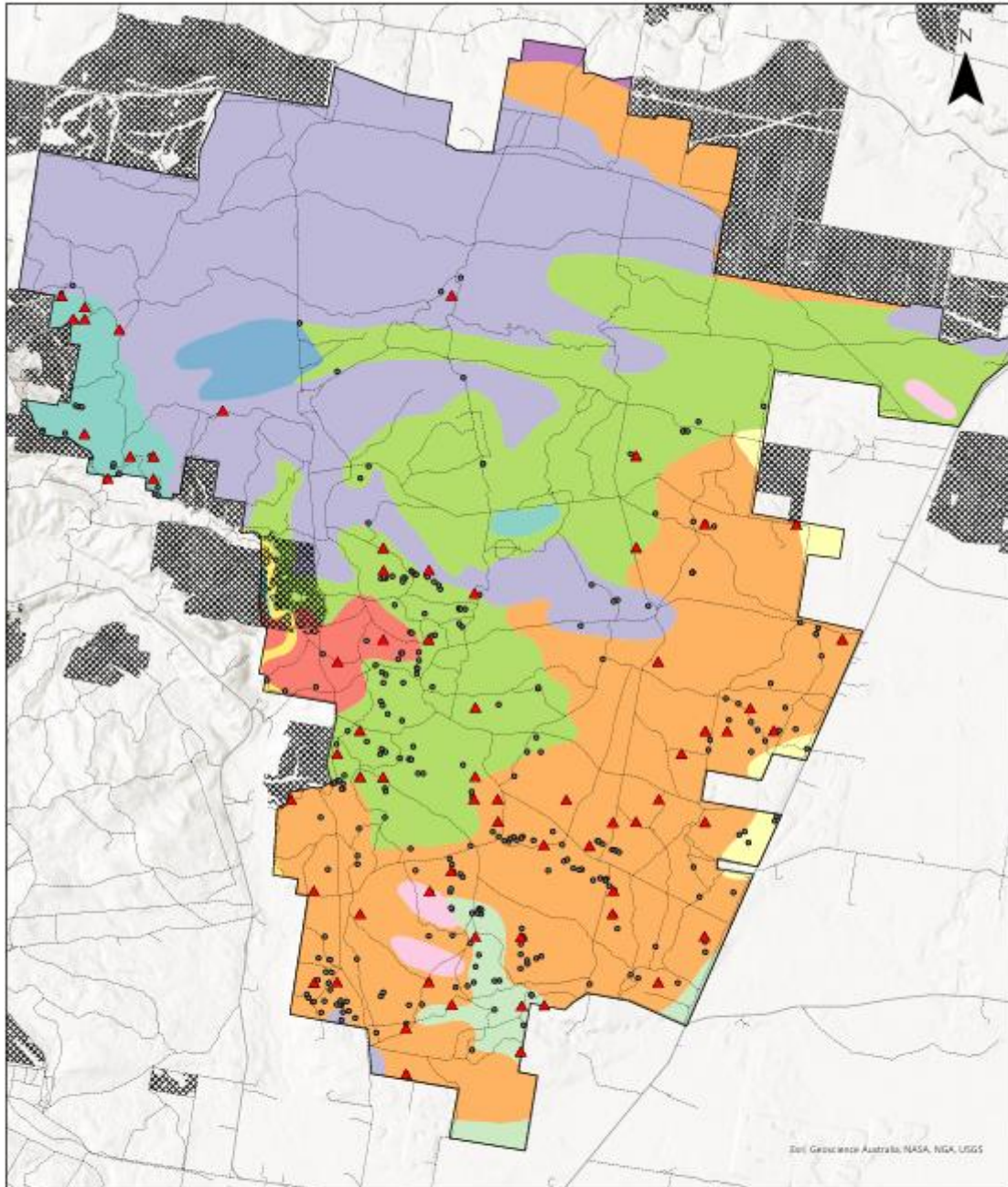
At Won Wron koalas appear to favour Mountain Grey Gum and Swamp Gum sites growing on Gormandale and Woodside with Gormandale soil classifications. Bluegum growing on Stockdale soils were also favoured. The highest rates of koala scats in a soil type per hectare were on Boolara Tertiary Sediments located in the north western section of Mullungdung. Damp Forest was also found growing on this forest type.

| | Mullungdung | Won Wron |
|---|--|--|
| Soil Classifications | 13 | 7 |
| % Soil Classifications (almost entirely Sedimentary) | Gormandale 36%, Stockdale 31%, Stockdale with Gormandale 24%, Woodside with Gormandale 2.9%. | Gormandale 51%, Woodside with Gormandale 27% Stockdale 16%, Gormandale with Morwell 5.2% |
| Sedimentary Soil Types | Tertiary 43%, Pleistocene 29%, Aeolian 27% | Pleistocene 41%, Aeolian 41%, Tertiary 18%. |
| Landforms | 11 | 7 |
| Landform % | Dunefields 49.3%, undulating plains 45.5%, low hills 2.9%, level plains 1.8%. | Dunefields 67%, undulating plains 16.2%, level plains 13.6% and rolling low hills 2.7% |

| | | |
|----------------------------------|--|--|
| Most positive koala sites | Stockdale (48%) | Woodside with Gormandale (46%), Stockdale (27%) |
| Most 'random' koala scats | Stockdale (47%), Stockdale with Gormandale (29%) | Woodside with Gormandale (36%), Gormandale (36%), Stockdale (21%), |

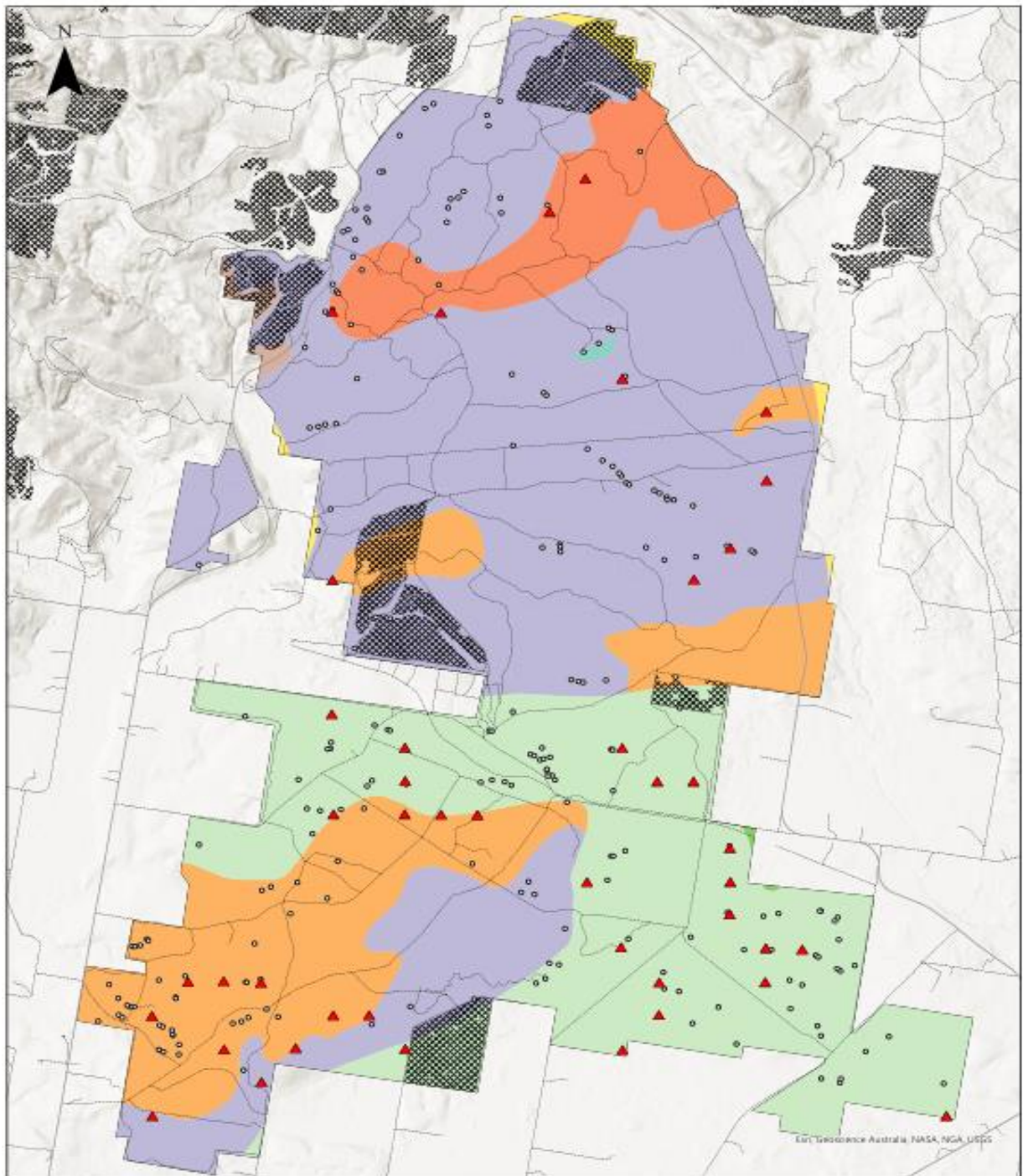


Hedge Wattle/Kangaroo Thorn (Acacia Paradoxa) is growing in large areas throughout southern Won Wron making some areas almost inaccessible.



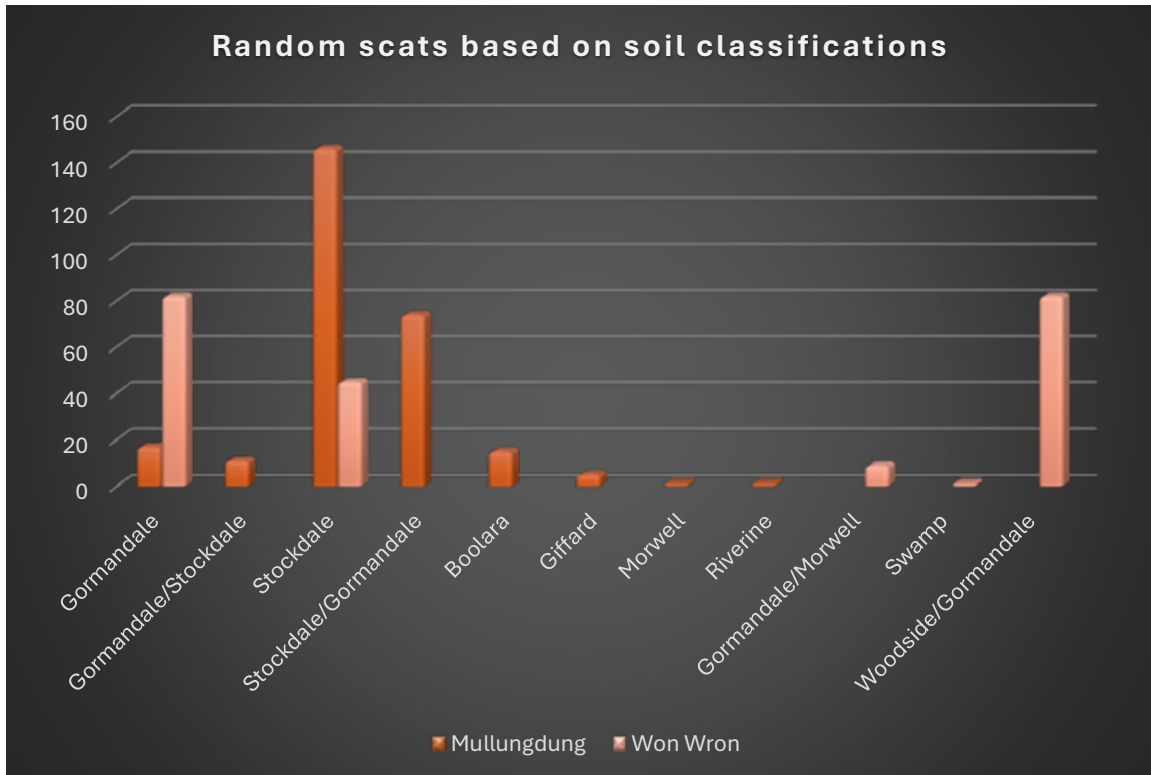
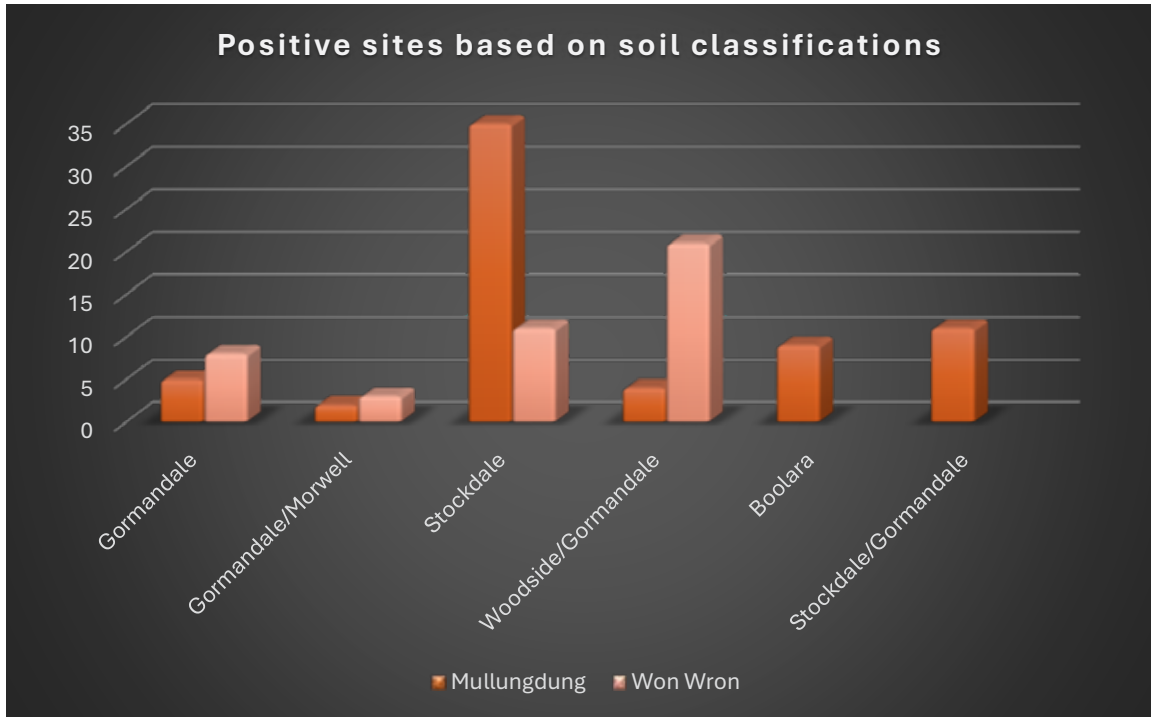
- | | |
|----------------------------|--------------------------------|
| Boolarra | Woodside |
| Giffard | Woodside with Gormandale |
| Gormandale | riverine |
| Gormandale with Stockdale | swamp |
| Morwell | ▲ Positive Survey Sites |
| Stockdale | • Koala Scat Location (Random) |
| Stockdale with Gormandale | ▨ Plantation Area |
| Stockdale; shallow profile | |
| Warragul | |

Project: Mullungdung Surveys (Soil Type)
Organisation: Friends of the Earth
Date Produced: 17-09-2025
Coordinate System:
 GDA2020 MGA Zone 55



- Gormandale
- Gormandale with Morwell
- Stockdale
- Warragul
- Woodside with Gormandale
- Yarram
- riverine
- swamp
- Positive Survey Sites
- Koala Scat Location (Random)
- Plantation Area

Project: Won Wron Surveys (Soil Type)
Organisation: Friends of the Earth
Date Produced: 17-09-2025
Coordinate System:
 GDA2020 MGA Zone 55



KOALA HOTSPOTS

Over 50 koala 'hotspots' or Primary Koala Habitat (>0.5 koalas/ha) have been identified by FoE. These hotspots total only 269.58ha or 0.9% of both Won Wron and Mullungdung State Forests, but account for 22% of koala numbers.

Positive Mountain Grey Gum sites at Mullungdung are found in a band stretching in a south east - north west direction over approximately 15km x 3km (4500ha). The Morris Creek catchment appears to be the stronghold of the Mountain Grey Gums. Key areas are Mullungdung Flora and Fauna Reserve, the north of Mullungdung Flora and Fauna Reserve and an area north and south of Shields Road. At Won Wron, Mountain Grey

Gum are found mainly in the northern half of the forest. A 'handful' of drainage lines held large numbers of Mountain Grey Gum with scats underneath.

Positive Swamp Gums are scattered throughout Mullungdung, but the main 'hot spot' appears to be in the south-east portion of Won Wron. There are remaining questions regarding Swamp Gum being classed as a Preferred Koala Feed Tree at Mullungdung and Won Wron due to data deficiency.

Positive Yellow Stringybarks are scattered throughout Mullungdung and Won Wron, but the main 'hot spots' appear to be in Southern Won Wron and to the east and west of Mullungdung Flora and Fauna Reserve.

| <i>Koala Hotspots/Primary Koala Habitat >0.5 koalas/ha</i> | | | |
|---|-----------------|------------------------------------|-----------------|
| Mullungdung Key Trees | Hectares | Won Wron Key Trees | Hectares |
| <i>Mountain Grey Gum</i> | <i>140.37</i> | <i>Mountain Grey Gum</i> | <i>45.49</i> |
| <i>Swamp Gum</i> | <i>41.27</i> | <i>Swamp Gum</i> | <i>12.35</i> |
| <i>Yellow Stringybark/Messmate</i> | <i>5.97</i> | <i>Yellow Stringybark/Messmate</i> | <i>8.38</i> |
| <i>Manna Gum</i> | <i>1.16</i> | <i>Swamp Gum/Manna Gum</i> | <i>2.32</i> |
| | | <i>Apple Top Box</i> | <i>3.98</i> |
| | | <i>Blue Gum</i> | <i>8.31</i> |
| Total | 188.77 | Total | 80.83 |

LAND USE DISCUSSION

Mullungdung would most likely qualify as areas of Regional Koala Significance (eg an area larger than 4,000-5,000 hectares capable of sustaining a koala population of 500 animals). So far only one area in the Strzelecki's (an area called Morwell 1*) could qualify as being such an area (9).

Mullungdung and Won Wron represent an opportunity for the state government to reserve 30,000ha of forest, with 10,000ha of this being Preferred Koala Habitat, at a time before a possible EPBC listing of the Strzelecki koala occurs. FoE nominated the Strzelecki koala under the EPBC Act in 2022. Although the nomination was knocked back, the Victorian Government has recently undertaken genetic research (13) which we believe will further confirm the significance of the Strzelecki koala and its range. The results of the Victorian Government research probably won't be published until 2026, although the State Government has apparently had the report since July 2025.

Existing legislation in Victoria cannot protect the Strzelecki koala based on its unique genetics. Victoria's Flora and Fauna Guarantee Act does not allow listing a species based genetic diversity within a species, but the Federal EPBC Act does.

The decision to reserve large sections of Mullungdung and Won Wron, would show foresight by the State Government. Strzelecki koalas in the nearby Strzelecki Ranges are facing a myriad of issues, including ongoing fragmentation of habitat and the devastating consequences of fire, storms, plantation logging and the privatisation of most of their habitat in the 1990's. Tens of thousands of hectares of the Strzelecki Ranges are currently being converted to pine plantations. Recent estimates in Strzelecki Wet Forest in 2023 by Biolink revealed an estimated population 4 times less (9) than actual numbers estimated by the State Government. The situation in the Strzelecki's is dire for koalas.



Feb 28 2024: Members of the Yarram Yarram/Woodside Land Care Network visiting a site at Mullungdung, after a meeting in Woodside to discuss FoE's Mullungdung koala surveys reports and options for to extend reserve option at Mullungdung.

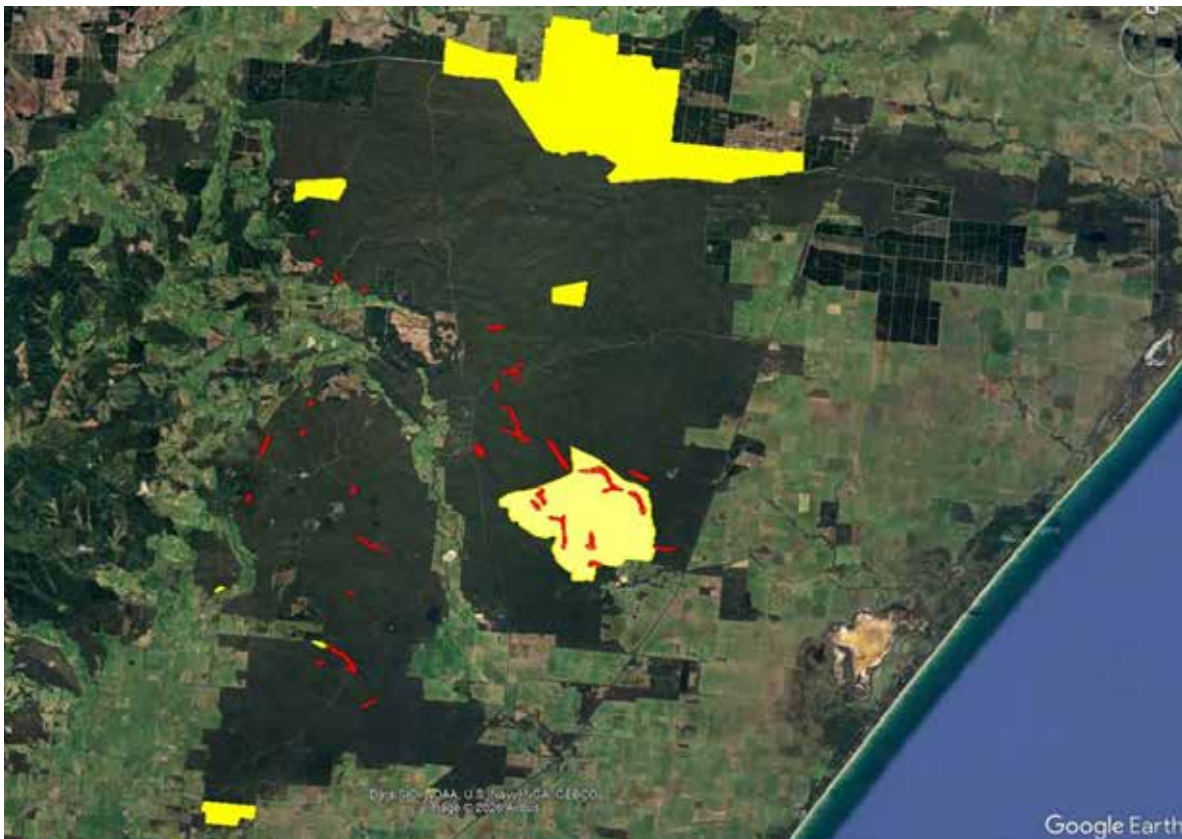
The State Government is only one third of the way through a long winded (20 year!) process of establishing the 8,000ha Brataualung Forest Park in the Strzelecki Ranges. The first memorandum of understanding with this area occurred in October 2006. The Strzelecki's has the least amount (5%) of reserved land in any bioregion in Victoria.

Only 30% of the Brataualung Park has been gazetted as of February 2026 and nothing has been gazetted since July 2018. Campaigners are frustrated (14) by the length of time involved in getting the Brataualung Forest Park established and hope that the process involved in establishing further reserves at Mullungdung and Won Wron will not be so

complicated or long winded. FoE also hopes that calls for a new reserve at Mullungdung Won Wron do not further impact or lessen the significance of the Brataualung Forest Park hand back which FoE has been closely associated with for twenty years.

A bare minimum should see Mullungdung's reserves expanded to 7000 hectares and Won Wron 3000 hectares. In February 2024, Friends of the Earth announced a push to reserve Mullungdung State Forest (16).

Friends of the Earth proposes that all of Mullungdung and Won Wron State forests are added to the State's reserve system.



Existing reserves at Mullungdung and Won Wron (in yellow). Identified Mountain Grey Gum Primary Koala Habitat (PKH) (in red). Mountain Grey Gum PKH has ~60% within Mullungdung Flora and Fauna Reserve, with none in Reserve at Won Wron.

REFERENCES

- (1)** Koala surveys: Strzelecki ranges/Gippsland regions. Friends of the Earth, Melbourne December 2019/ July 2020.
- (2)** Koala surveys: Strzelecki Ranges/Gippsland regions. Friends of the Earth, Melbourne November 2020/ August 2021.
- (3)** Phillips, S. and Allen C. 2014. “Strzelecki Koala Study. Report to NSW Office of Environment and Heritage.”
- (4)** Phillips, S. and Wallis 2016. ‘Habitat Utilisation by Koalas in the South Gippsland Region’, September 2016 by Biolink Ecological Consultants. Report for South Gippsland Landcare Network.
- (5)** Genetic Structure and diversity of the koala population in South Gippsland, Victoria. A remnant population of high conservation significance. Faye Wedrowicz, Jennifer Mosse, Wendy Wright and Fiona E. Hogan
- (6)** <https://au.news.yahoo.com/calls-mount-for-government-to-release-850000-koala-report-victorias-shameful-secret-205508813.html>
- (7)** Email communications with Biolink
- (8)** Comparing Naïve Occupancy Versus Modeled Occupancy to Monitor Declines in Rare Species SEAFWA Journal Volume 11, March 2024 Todd D. Ewing Jason C. Doll Rebekah L. Ewing
- (9)** Brataualung Forest Park: landscape context, occupancy and habitat use by the Strzelecki Koala population” Biolink 2023 Phillips/Wallis
- (10)** <https://www.environment.vic.gov.au/biodiversity/naturekit>
- (11)** https://www.melbournefoe.org.au/gippsland_flora_and_fauna_reserve_now_a_motocross_circuit
- (12)** <https://www.vic.gov.au/hundreds-trees-illegally-destroyed-firewood-south-gippsland>
- (13)** <https://www.ari.vic.gov.au/research/environmental-management/wildlife-management2/the-great-victorian-koala-survey>
- (14)** https://www.melbournefoe.org.au/brataualung_forest_reserve_handback_delayed
- (15)** <https://www.epa.nsw.gov.au/sites/default/files/koala-likelihood-mapping.pdf>
- (16)** https://www.melbournefoe.org.au/friends_of_the_earth_proposes_a_new_18_000_hectare_koala_

