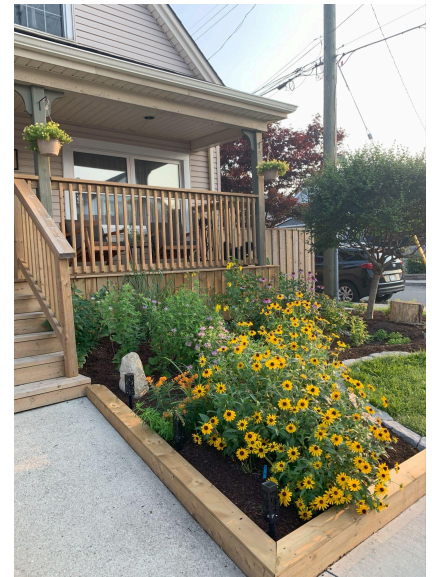
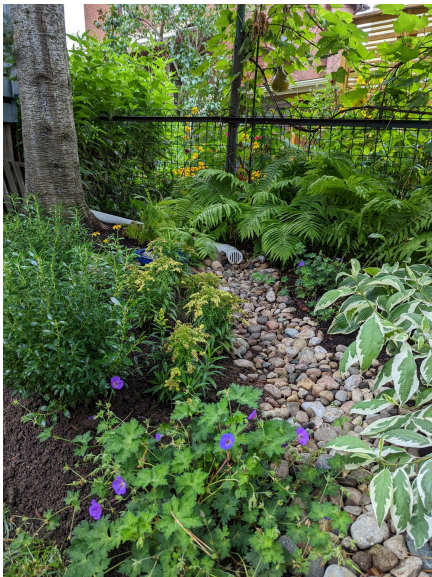


RAIN READY HAMILTON

Funded by the City of Hamilton

Rain Ready Hamilton Rebate	2
Rebate Overview	2
How to choose your funding tier	2
Application Process	3
What you need to apply	4
Eligibility Requirements	4
Required Documents	4
Required Permits	5
How to apply	5
Project Requirements	5
Downspout Redirection up to \$500	5
Rain Gardens, Bioswales, Dry swales	7
Soakaway Pits and Dry Wells	8
Permeable Paving	9
Resources	11
Project Drawing	11
How to determine slope and complete a soil test:	13
Important resources to check out	14
Contact	15



RAIN READY HAMILTON

Funded by the City of Hamilton

Rain Ready Hamilton Rebate

Rebate Overview

Applicants can apply for two funding tiers: up to \$1,500 and up to \$5,000. These tiers are delineated based on the types of LID (Low Impact Development) projects undertaken and with consideration of their typical costs.

Tier 1: up to \$1,500

- Rain gardens
- Rainwater collection and storage systems
- Bioswales and dry swales
- Soakaway pits
- Infiltration trenches
- Enhanced Grass Swales
- Perforated Pipe Systems
- Projects that are at least 1 m x 3 m.

Tier 2: up to \$5,000

- Permeable paving (driveways, sidewalks, paths and/or patios)
- Green roofs
- Downspout realignment in combination with other LID features
- Comprehensive LID plans involving multiple features

These tiers represent financial caps for the rebates (reimbursement). Expenditures above these caps are the responsibility of the applicant. For example, replacing a driveway with permeable paving installation done by a professional contractor will likely exceed the \$5,000 tier cap.

Larger, more complex projects, where multiple types of LID features are stacked into a comprehensive design, are eligible for the higher, \$5,000 funding cap.

Please be advised your application requires approval prior to installing your project.

How to choose your funding tier

When applying for the rebate, applicants are required to choose a rebate denomination they believe is most appropriate for their project. If you are unsure what tier to apply for, use the following questions below to determine if your project meets the minimum requirements for tier 2:

1. Will materials for this project cost more than \$5000?

RAIN READY HAMILTON

Funded by the City of Hamilton

2. Does this project require professional work?
3. Does this project implement multiple LID features?
4. Will there be more than one project site on the property?
5. Are you applying for a permeable driveway?

If you can answer yes to 2 or more of these questions, it is appropriate to apply for tier 2 (\$5000) for the rebate.

Applying for the higher rebate tier and not receiving it does not subject applicants to be “disqualified”. If an application for the tier 2 rebate (\$5000) does not meet the eligibility requirements, the application will be reviewed for the tier 1 rebate if applicable. Revision is subjected to funding availability.

Application Process

1. Attend at least one approved educational event including: the Rain Ready webinars, in-person design workshops, or Ask the Expert Open House. You can also request access to the recorded webinars by emailing rainready@greenventure.ca
2. Once you have gathered all the necessary information, apply to the rebate online through our website: www.greenventure.ca/rainready Applications must be received before the April 17th deadline.
3. Once submitted, your application will be reviewed by the Rain Ready staff after the application period. Applicants will be notified via email if their application has been approved or denied. We may have additional follow up questions about your application. Please keep an eye on your email during this time.
4. Pre-approved applicants must complete a Rain Ready Terms and Conditions form. Once this form is completed, Rain Ready staff will confirm a Rebate budget and projects can commence.
5. Install your project within the months of May-October. Keep track of your expenses in our Expense Tracker spreadsheet, available on our website under “Supporting documents” and keep itemized receipts of all expenses. We will also ask for a short progress report, with photos and a description of how your project is progressing. You have until October 31st, 2026 to complete your project and submit the required documentation listed below. If you complete your project and submit all required documentation earlier than this deadline, we may process your Rebate earlier.
6. When your project is complete, we will send you a form link to upload: your Expense Tracker, receipts, and final photos of your completed project. We will also ask if you’d like a free yard sign to promote the program. Please note we will be doing randomized checks of final projects and you may be selected to confirm proper completion of the

RAIN READY HAMILTON

Funded by the City of Hamilton

project. Applicants will be notified by Green Venture if they have been chosen and to schedule a visit.

7. We review your expenses and then send a final form to confirm the address and addressee for the Rebate mailing. We will then mail you your Rebate cheque.

What you need to apply

Eligibility Requirements

1. The proposed project is within the City of Hamilton (this includes, Flamborough, Binbrook, Glanbrook, Stoney Creek, Dundas, Ancaster etc)
2. The proposed project is on a residential property (maximum of 6 units or less).
3. The proposed feature must meet the City's safety standards regarding distance from the home. Rain gardens, infiltration features, and other stormwater installations must be located a minimum 3m (10ft) distance away from the foundation to prevent drainage issues.
4. You can complete the project in 2026 with all reimbursement and feedback forms submitted correctly by **October 31st**.
5. You are the property owner of the residence, or you have written permission from the property owner allowing you to carry out the project.
6. You attended at least one of Green Venture's educational sessions or reviewed our specified educational materials.

Required Documents

1. Proposed Project Site Plan drawing (See resources for more information)
2. If you are not the property owner, (e.g. you are a renter), letter of permission from the property owner. A sample letter of permission can be found on our rebate page under **supporting documents**.
3. Photos of the space before construction should capture the state of the site before any work has begun. Including a standard sized object or a tape measure can help convey the scale of the photos. Take pictures from multiple angles and ensure you have a picture that captures the entire project site if possible. Cell phone pictures are acceptable. Please try to note where photos are being taken and try to repeat the same spots/angles for progress photos and completed project photos.
4. Contractor quote(s) or project budget if DIY project.

RAIN READY HAMILTON

Funded by the City of Hamilton

Required Permits

Each LID project and every property is unique, so the approvals and permits needed will vary based on the scope and scale of your project.

For rain gardens, bioswales, and similar LID projects, applicants are responsible for requesting locates by contacting [Ontario One Call](#) to have a technician come and mark buried infrastructure. Please note that there can be a wait time, so plan your timelines accordingly. This is also a service only available for front yards. Backyard works may need locates also, which can be done by private locates companies.

Other approvals and permits are also the responsibility of the applicant. It is the applicant's responsibility to ensure that the project meets all legal requirements including (but not limited to):

- Local municipal bylaws
- Provincial and regional highway setbacks
- Drainage Act
- Federal and Provincial Acts
- Canada Farm Building Code
- Ontario Building Code
- Conservation Authorities Act

How to apply

The application link will be available on the Rain Ready program page from March 2, 2026 to April 17, 2026 at 6 PM ET.

Project Requirements

This section will break down the requirements specific to each type of eligible project.

Downspout Redirection up to \$500

*Please reference the City of Hamilton's Protective Plumbing program for **downspout disconnection**.*

Description:

Downspout redirection is the modification of an existing downspout so that it drains to a permeable surface. This section also includes downspout disconnection where downspouts are

RAIN READY HAMILTON

Funded by the City of Hamilton

currently draining underground and adding a new downspout in order to better direct water into a Low Impact Development feature.

Project Requirements:

- Redirected downspouts must drain to an area that is permeable. Downspout disconnections onto impermeable surfaces, like driveways, are not eligible. Eavestrough (gutter) work is not eligible under this project type. This includes any repairs, replacements, extensions, or modifications to the gutter system itself. Only downspout-related work qualifies.



- Water must be directed into a space that slopes away from the foundation of a building.
- Downspout redirection is not going to cause water to flow onto an adjacent property.

Eligible costs:

- Materials and labour related to redirection of existing downspouts including additional downspout materials, downspout extenders, and hardware required.
- Materials related to preventing erosion at the end of the downspout such as a splash pad or stones.
- Materials and labour related to the disconnection and redirection of downspouts that drain directly to storm or combined sewer systems.
- Materials and labour related to adding an additional downspout in order to better direct water into a permeable surface.
- Materials and labour related to the alteration of ground level surfacing (paths, walkways, driveways) in order to facilitate the redirection of a downspout.
- Rain barrels incorporated as part of the downspout redirection. Photos of the new rain barrel setup must be included in documentation.

RAIN READY HAMILTON

Funded by the City of Hamilton

Ineligible costs:

- Materials that are solely decorative in nature.
- Materials related to the installation, repair, replacement, or modification of eavestroughs (gutters).
- Rain chains.
- DIY fees.

Claim requirements:

- Completed Expense Tracker.
- Itemized receipts for all relevant materials and labour.
- Photo proof of work: before, during and after.

Rain Gardens, Bioswales, Dry swales

Description:

Rain gardens are shallow depressed gardens that promote the infiltration of rainwater and snowmelt and are planted with native perennial plants. Bioswales are planted channels that convey and infiltrate rainwater. Dry swales are similar, but utilize mainly stone.

Project requirements:

- Applicants must contact Ontario One Call to locate buried services so you can dig safely.
- Rain gardens must receive runoff from a roof or other impermeable surface.
- Rain gardens must be sized to manage the runoff generated by the directly connected impervious area (between 10-50% of catchment area, depending on the soil).
- Rain gardens must be located at least 3m away from any building foundation.
- Rain gardens must have an erosion-resistant outlet that is lower in elevation than the inlet and that will not direct overflow onto adjacent properties.
- Where infiltration rates are low (<15mm/hour), soil amendments using sand and compost (50:50) should be used to improve infiltration rates. Alternatively, the project area should be expanded or a different type of LID feature should be considered instead.
- Rain gardens must be planted to cover at least 80% of the garden area once the plants are mature.
- Ornamental plants can be included but are not eligible for the rebate.
- Shredded mulch (ideally shredded hardwood) should be used to cover soil.
- If hiring an industry professional, it is recommended you work with a Fusion Landscape Professional or licensed landscape contractor.

RAIN READY HAMILTON

Funded by the City of Hamilton

Eligible Costs:

- Native plants
- Stone
- Soil amendments
- Drainage system materials (piping, landscape fabric, etc)
- Mulch
- Professional fees and labour (if hiring a landscape professional)
- Soil testing
- Stump removals up to \$500 (must be impeding project design)
- Material disposals up to \$100

Ineligible costs:

- Ornamental plants
- Decorative features, including stone that does not serve a purpose for directing runoff
- Tools
- Machinery
- Rubber mulch
- Sod or lawn grass
- DIY fees

Claim requirements:

- Completed Expense Tracker.
- Itemized receipts for all relevant materials and labour.
- Photo proof of work: before, during and after.

Soakaway Pits and Dry Wells

Description:

Soakaway pits are below-ground reservoirs containing stone. Dry wells hold water in below-ground reservoirs with perforations in the container to allow water to infiltrate. They collect rainwater and allow it to slowly infiltrate into the ground in order to reduce run-off. Soakaways can receive rainwater from surface sources or buried sources (e.g. a buried downspout connection).

Project requirements:

- Applicant must contact Ontario One Call to locate buried cables, pipes and wires so you can dig safely. Backyard projects will need to contact private servicing locate companies.
- Soakaway pits and dry wells must receive runoff from a roof or other impermeable surface.

RAIN READY HAMILTON

Funded by the City of Hamilton

- It is recommended to work with a landscape professional to get the correct sizing for these devices.
- Soakaway pits must use a fill material with a minimum void space of 40% (e.g. ¾ in. clear stone or plastic soakaway crate).
- Filter fabric must be placed on all sides and top (or choker course of 5-10cm of 5mm clear stone for top) of the stone reservoir to prevent sediment entering the void space.
- Soakaway pits and dry wells must be equipped with screens or sedimentation chambers to avoid debris and sediments entering the infiltration chamber.
- Soakaway pits and dry wells must be at least 3m from any residential foundation and overflow must release to an area graded away from the foundation and away from neighbouring properties. Please indicate overflow on your submission.
- A quote from a licensed professional contractor, as needed, uploaded with application.
- If hiring an industry professional, it is recommended you work with a fusion landscape professional or licensed contractor.
- Additional information on sizing, design and installation can be found at [the STEPS infiltration chambers resource](#).

Eligible Costs:

- Materials and devices required for installation.
- Labour costs for installation from a professional contractor.

Claim requirements:

- Completed Expense Tracker.
- Itemized receipts for all relevant materials and labour.
- Photo proof of work: before, during and after.

Permeable Paving

Description:

Permeable surfaces are hard surfaces that allow rainwater to infiltrate through the top surfacing into a subsurface that promotes infiltration. Common types include permeable interlocking concrete pavers, porous asphalt, permeable concrete, stabilized gravel, and other polymer-bound aggregate mixes. They can be installed on driveways, patios, walkways or other hardscaped surfaces.

Project requirements:

- Applicant must contact Ontario One Call to locate buried cables, pipes and wires so you can dig safely. Backyard projects will need to contact private servicing locate companies.

RAIN READY HAMILTON

Funded by the City of Hamilton

• Driveways, walkways and patios must be compliant with the soft landscaping requirements established in City of Hamilton By-laws:

1. BY-LAW NO. 10-221 PROPERTY STANDARDS

2. ZONING BY-LAW 5.3.4 PARKING FACILITY SURFACE MATERIAL REQUIREMENTS

• An applicant who wishes to proceed with a driveway widening or walkway addition must apply for the appropriate permits to do so.

• Permeable pavement projects must slope away from residential foundations.

• Adjacent soft landscaping must not drain towards the permeable surface.

• If installing an interlocking pavement system, open space between pavers (i.e. joint space) must be between 5 and 15% of the total surface area. For more information on permeable interlocking pavements, please refer to [Construction of Permeable Interlocking Concrete Pavement Systems by CHMA](#).

• Permeable pavement installation must be sized according to [Sustainable Technologies Evaluation Program \(STEP\) Low Impact Development Guidelines](#). These specifications are listed below for convenience but applicants should review the full guidelines and any manufacturer installation requirements.

• Driveways are not permitted within 1.0 meter of public infrastructure including, but not limited to; fire hydrants, utility boxes, streetlight/utility poles and signs.

• Permission is required from Forestry if there is a tree dripline within 1.0 meter of your proposed driveway

• The City of Hamilton has a 50% green space requirement under the Zoning By-law No. 05-200. You cannot pave your entire front yard.

• Do not put asphalt on the road to create or extend a driveway approach ramp. Putting any material on the roadway without authorization from the City is against Hamilton's Streets By-law. You will be subject to a fine up to \$5,000 and all costs for removing the material.

• It is required that you work with a licensed contractor or a licensed landscape contractor when installing a permeable driveway. For permeable patio and pathway installation it is also strongly recommended that it is done by a licensed contractor. Any DIY project must note this on their application and follow the standards outlined here for best practices.

• A quote from a licensed professional contractor is needed in order to proceed with the application and work for a driveway.

All aggregates must meet the following specifications:

• Have a minimum porosity of 0.4.

• Maximum wash loss of 0.5%.

• Minimum durability index of 35.

• Maximum abrasion of 10% for 100 revolutions and maximum 50% for 500 revolutions.

RAIN READY HAMILTON

Funded by the City of Hamilton

- Note: Most Ontario Provincial Standard Specification (OPSS) aggregates are not recommended for use in permeable pavements, with the exception of 'Granular O' type.

Base preparation must meet the following specifications:

- The soils below the installation must be sloped away from foundations and should be free of channels and depressions that may concentrate water.
- The granular base must be clear, crushed 20 mm diameter stone conforming to ASTM C33 No 57.
- If required, the granular sub base should be clear, crushed 50 mm diameter stone, graded in accordance with ASTM D2940. 'Rain ballast' aggregate (63 mm) would also be suitable.
- If required, bedding should be clear, crushed 5 mm diameter stone, graded in accordance with ASTM C33 No 8, High Performance Bedding (1-9 mm diameter), or equivalent. Typical bedding thickness is between 40 mm and 75 mm.
- The surfacing should be permeable and allow the entry of water into the base and the soils below.
- Where geotextiles are used, they must be needle-punched or woven monofilament and should facilitate flow through the textile.
- Paver surfaces should have appropriate edge restraints: metal or plastic stripping is acceptable in some cases, but concrete curbs are preferred.

Eligible costs:

- Material and labour costs associated with installing a permeable pavement.

Ineligible costs:

- Non-permeable pavement areas.
- Decorative additions that do not contribute to the infiltration of rainwater.

Claim requirements:

- Completed Expense Tracker.
- Itemized receipts for all relevant materials and labour.
- Photo proof of work: before, during and after.

Questions about driveways compliance can be directed to:

roadopsandmaint@hamilton.ca

parking@hamilton.ca

RAIN READY HAMILTON

Funded by the City of Hamilton

Resources

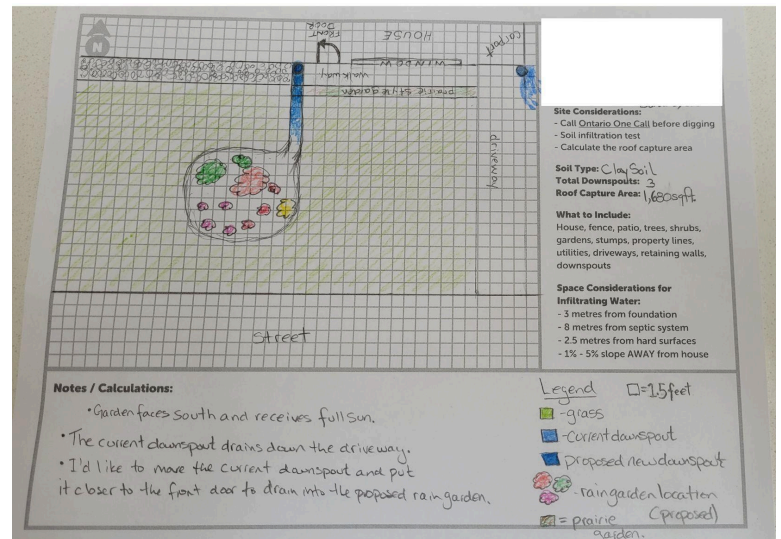
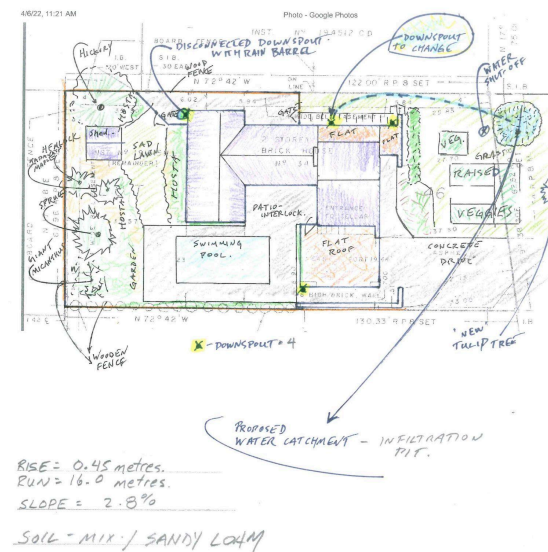
Project Drawing

The “Rain Ready Site Plan Worksheet” is available to assist applicants in submitting a project drawing. This page can be found on our program site under Supporting Documents here:

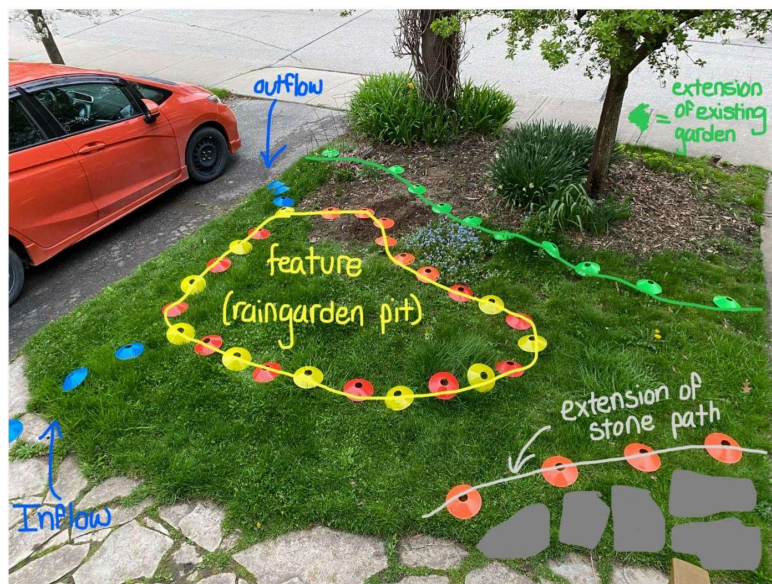
https://www.greenventure.ca/rain_ready_rebate

You are welcome to submit hand drawn project drawings, digital versions, or professional site plans created by an industry professional. Examples of acceptable project drawing submissions can be found below:

Example 1 and 2.



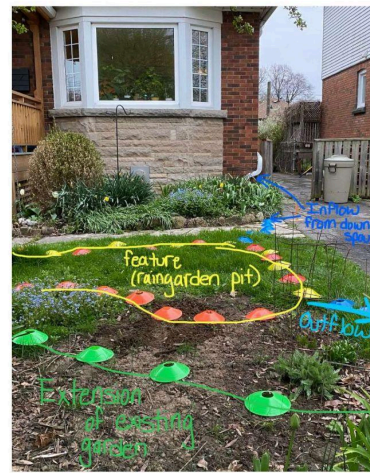
Example 3.



RAIN READY HAMILTON

Funded by the City of Hamilton

How to determine slope and complete a soil test:



RAIN READY HAMILTON

Funded by the City of Hamilton

Important resources to check out

https://www.greenventure.ca/the_nitty_gritty_on_soil

https://www.greenventure.ca/what_to_consider_when_choosing_your_plants

https://www.greenventure.ca/choosing_the_right_plants_for_your_lid_feature

https://wiki.sustainabletechnologies.ca/wiki/Main_Page

[Parking-residential-driveway-access-approval-guide-2026.pdf](#)

[Residential Parking on Private Property | City of Hamilton](#)

For completing required calculations:

Imperial to Metric conversions

1 foot \approx 0.30 metres

1 metre \approx 3.281 feet

Helpful calculations and conversions

Area = length X width

Volume = length X width X depth

1 m² = 10.8 sqft

1 sqft = 0.093 m²

1 cubic yard = 27 cubic feet

1 cubic foot = 0.037 cubic yards

1 cubic yard = 0.76 m³

1 m³ = 1.31 cubic yards

Local Native Plant Nurseries:

[Ontario Native Plants](#)

[Origin Native Plants](#)

[Bee Sweet Nature Co](#)

RAIN READY HAMILTON

Funded by the City of Hamilton

[Kayanase](#)

Contact

For additional information and questions, please reach out to us at rainready@greenventure.ca.

For additional information about the other incentive streams in Hamilton for institutional, industrial, commercial and multi-residential spaces, please refer to:

<https://www.hamilton.ca/home-neighbourhood/home-property/home-water-services/water-rates/stormwater-funding-review>.