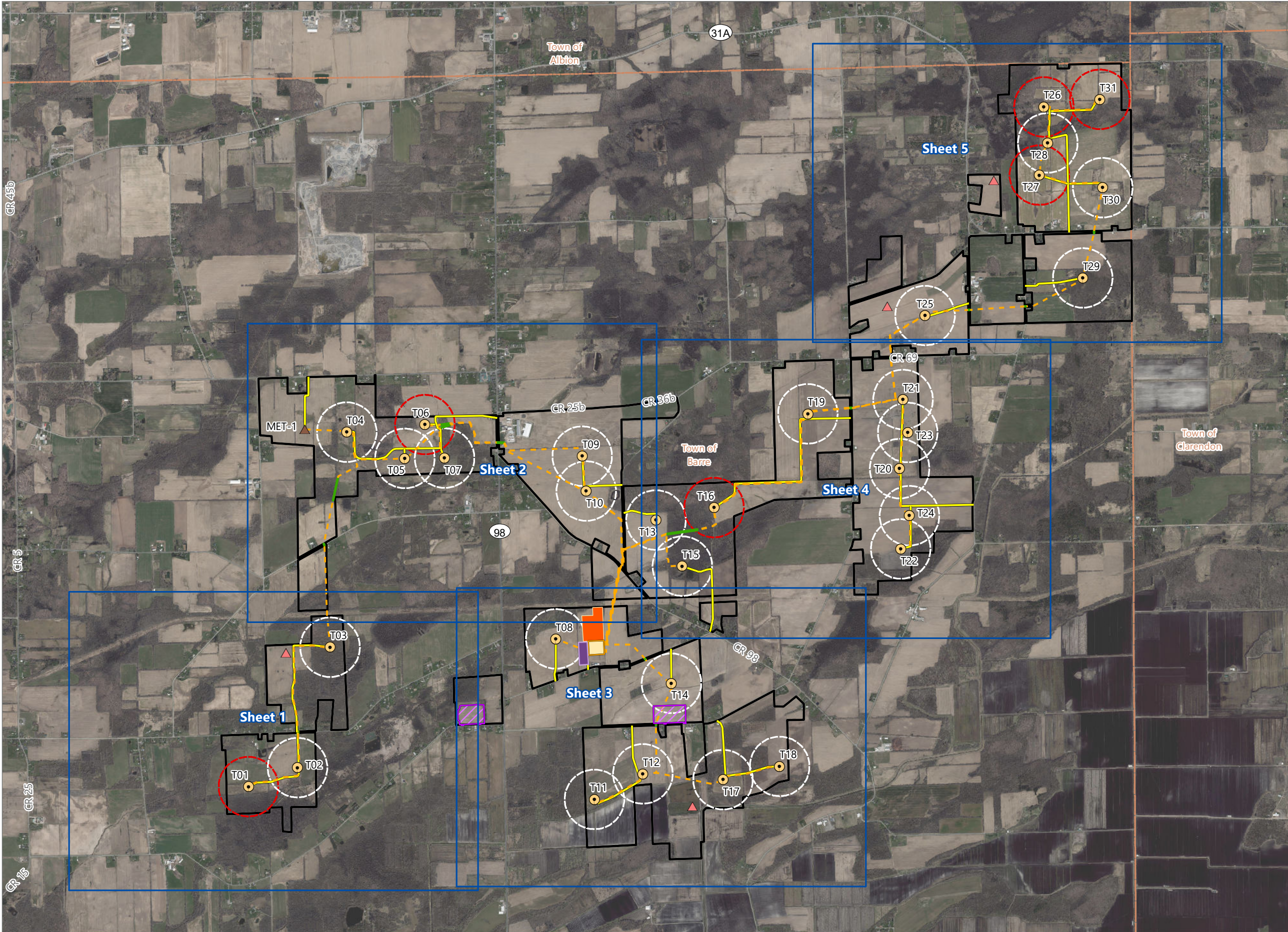


Figure 12. Wind Turbine Setbacks



Heritage Wind Project

Town of Barre, Orleans County,
New York

**Permit Modification
Matter No. 21-00026**

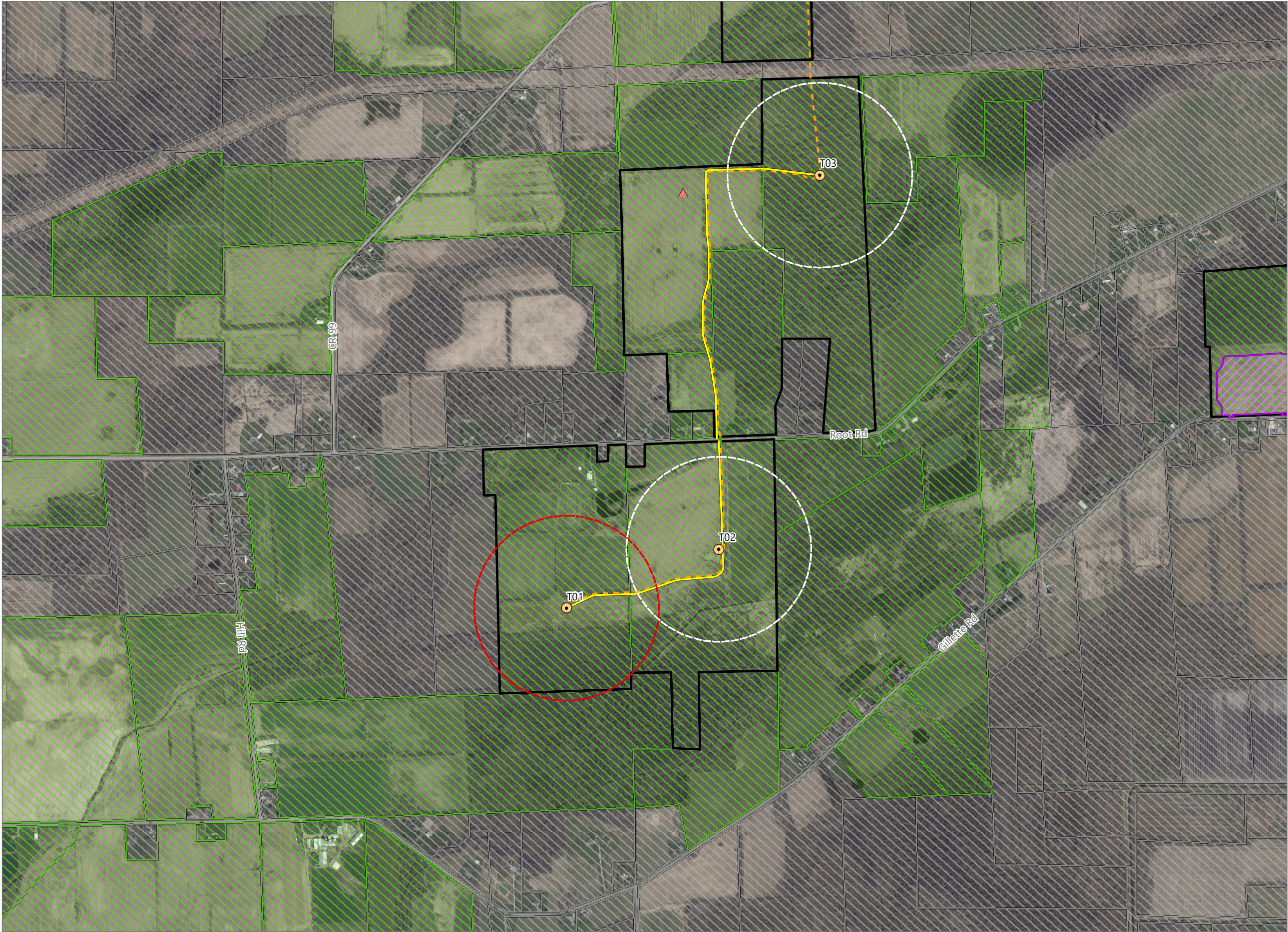
- Wind Turbine
- Wind Turbine 1.5x Tip Height Setback
- Turbine Requires Additional Waiver from ORES
- Turbine Does Not Require Additional Waiver from ORES
- Met Tower
- Performance Tower
- Collection Line
- Access Road
- HDD Bore
- Collection Substation
- POI Substation
- O&M Facility
- Laydown Yard
- Facility Site
- Town Boundary



0 1,000 2,000 4,000
Feet

Prepared July 15, 2022
Basemap: NYSDOP "2020" orthoimagery map service

Figure 12. Wind Turbine Setbacks

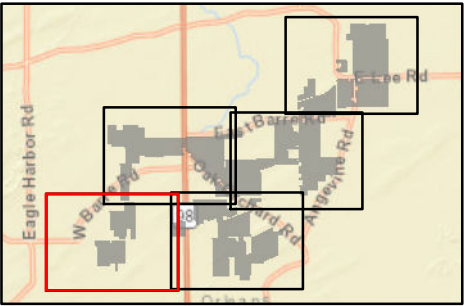


Heritage Wind Project

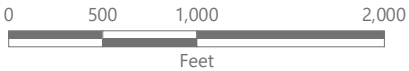
Town of Barre, Orleans County,
New York

**Permit Modification
Matter No. 21-00026**

- Wind Turbine
- Wind Turbine 1.5x Tip Height Setback
- Turbine Requires Additional Waiver from ORES
- Turbine Does Not Require Additional Waiver from ORES
- Performance Tower
- Collection Line
- Access Road
- HDD Bore
- Laydown Yard
- Participating Parcel Boundary
- Non-Participating Parcel Boundary
- Facility Site

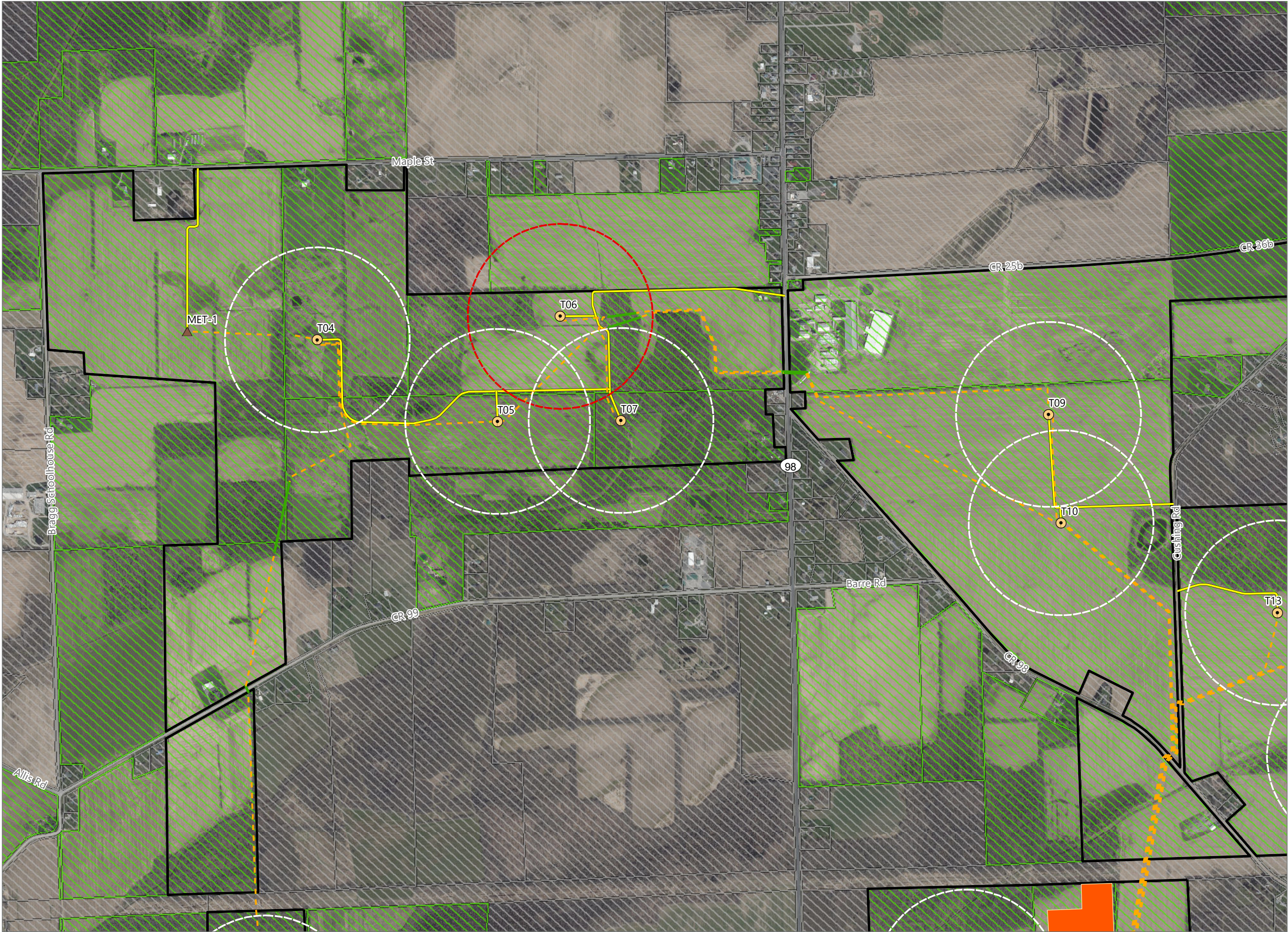


Sheet 1 of 5



Prepared July 15, 2022
Basemap: NYSDOP "2020" orthoimagery map service

Figure 12. Wind Turbine Setbacks

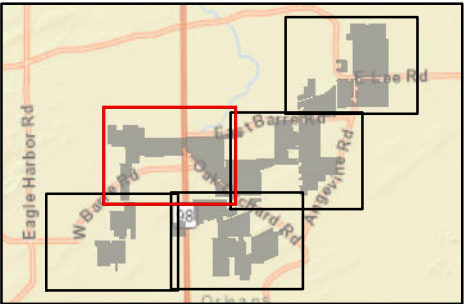


Heritage Wind Project

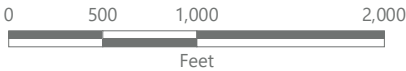
Town of Barre, Orleans County,
New York

Permit Modification
Matter No. 21-00026

- Wind Turbine
- Wind Turbine 1.5x Tip Height Setback
- Turbine Requires Additional Waiver from ORES
- Turbine Does Not Require Additional Waiver from ORES
- Met Tower
- Collection Line
- Access Road
- HDD Bore
- POI Substation
- Participating Parcel Boundary
- Non-Participating Parcel Boundary
- Facility Site



Sheet 2 of 5



Prepared July 15, 2022
Basemap: NYSDOP "2020" orthoimagery map service

Figure 12. Wind Turbine Setbacks



Heritage Wind Project

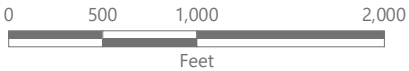
Town of Barre, Orleans County,
New York

**Permit Modification
Matter No. 21-00026**

- Wind Turbine
- Wind Turbine 1.5x Tip Height Setback
- Turbine Does Not Require Additional Waiver from ORES
- Performance Tower
- Collection Line
- Access Road
- HDD Bore
- Collection Substation
- POI Substation
- O&M Facility
- Laydown Yard
- Participating Parcel Boundary
- Non-Participating Parcel Boundary
- Facility Site

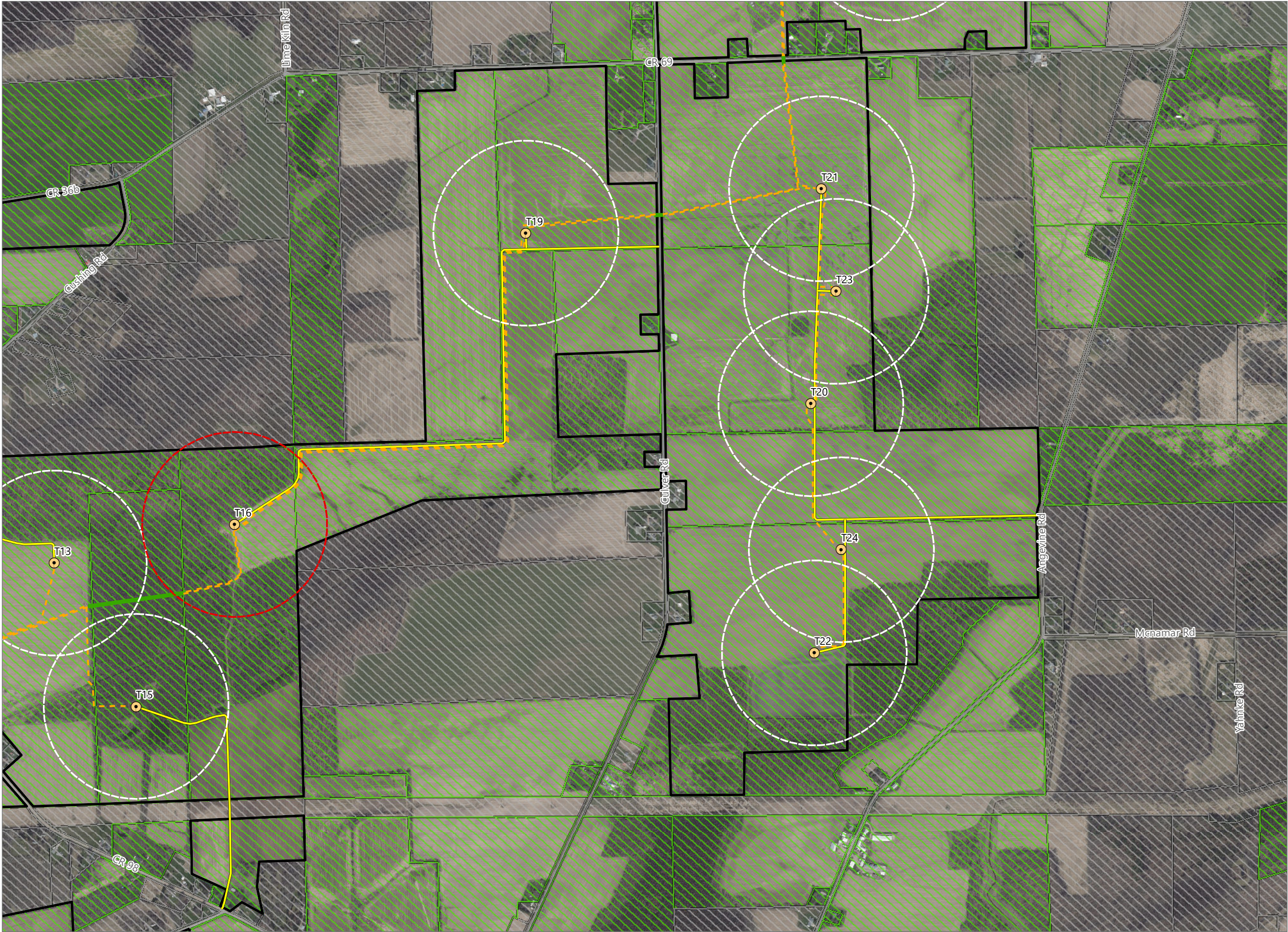


Sheet 3 of 5



Prepared July 15, 2022
Basemap: NYSDOP "2020" orthoimagery map service

Figure 12. Wind Turbine Setbacks

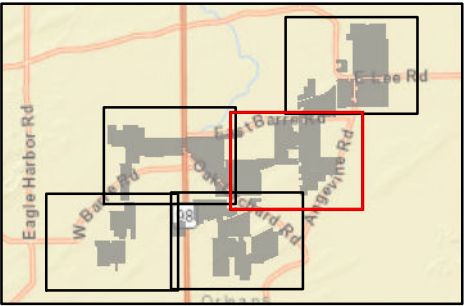


Heritage Wind Project

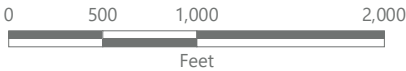
Town of Barre, Orleans County,
New York

Permit Modification
Matter No. 21-00026

- Wind Turbine
- Wind Turbine 1.5x Tip Height Setback
- Turbine Requires Additional Waiver from ORES
- Turbine Does Not Require Additional Waiver from ORES
- Collection Line
- Access Road
- HDD Bore
- Participating Parcel Boundary
- Non-Participating Parcel Boundary
- Facility Site

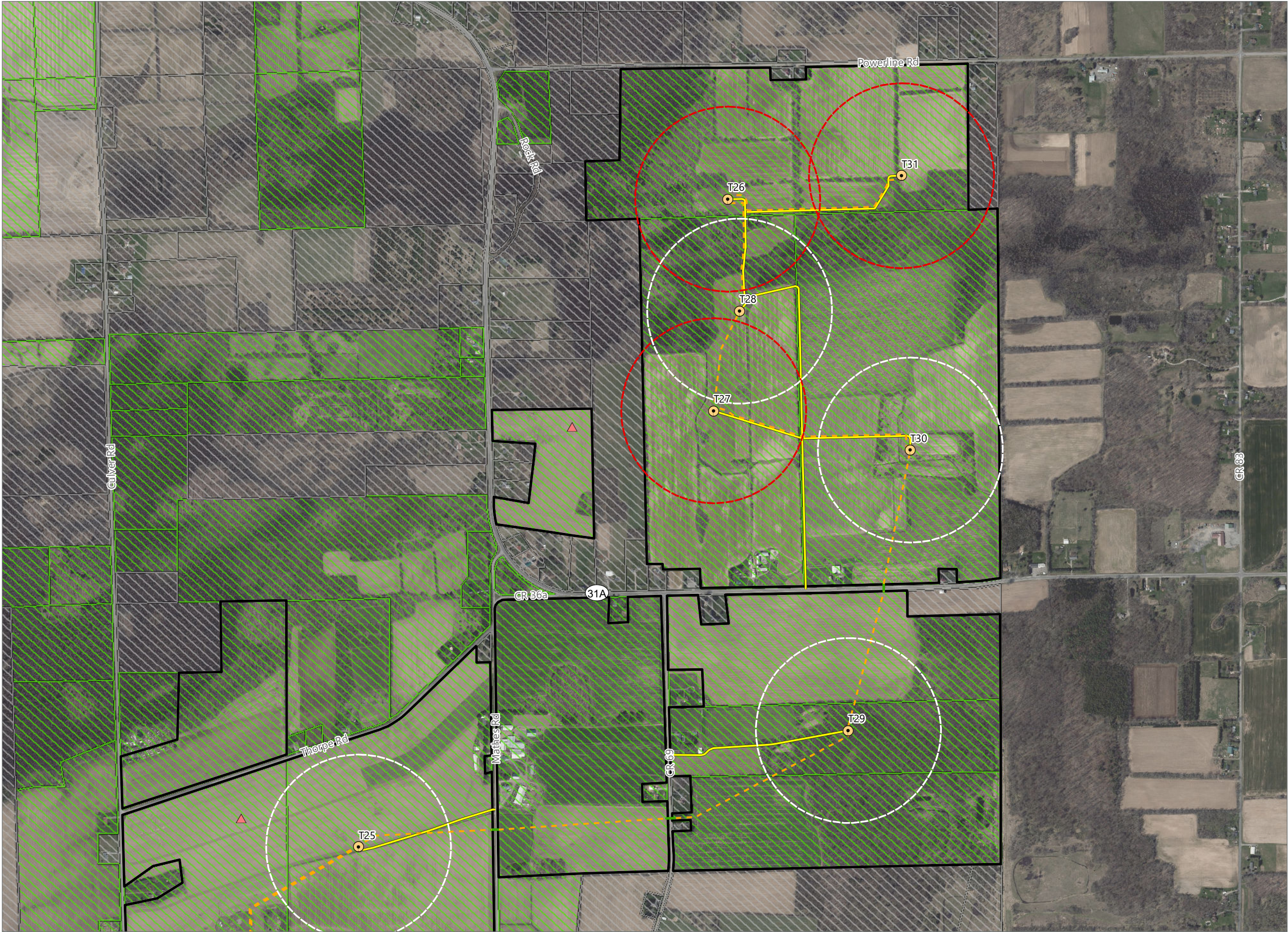


Sheet 4 of 5



Prepared July 15, 2022
Basemap: NYSDOP "2020" orthoimagery map service

Figure 12. Wind Turbine Setbacks



Heritage Wind Project

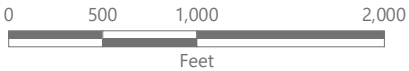
Town of Barre, Orleans County,
New York

**Permit Modification
Matter No. 21-00026**

- Wind Turbine
- Wind Turbine 1.5x Tip Height Setback
- Turbine Requires Additional Waiver from ORES
- Turbine Does Not Require Additional Waiver from ORES
- Performance Tower
- Collection Line
- Access Road
- HDD Bore
- Participating Parcel Boundary
- Non-Participating Parcel Boundary
- Facility Site



Sheet 5 of 5



Prepared July 15, 2022
Basemap: NYSDOP "2020" orthoimagery map service