



# STRATEGIC ROADMAP 2026-2028

## VISION

A Chesapeake ecosystem where Creation thrives and faith communities live out their call to care for our shared watershed.

## MISSION

IPC inspires and equips faith communities to honor, protect, and restore the Chesapeake's lands and waters.

## VALUES

- Respect
- Integrity
- Inclusion
- Justice
- Stewardship

### UPLIFT

Elevate faith-based voices and leadership

#### STRATEGIES

- Strengthen the capacity of faith leaders to champion Creation care
- Build understanding of interfaith traditions approach to Creation care
- Elevate faith voices in policy, science, and community conversations
- Engage emerging leaders including young adults
- Develop green team leadership across collaborative interfaith networks

#### PERFORMANCE MEASURES

- # of watershed restoration literacy training programs
- Increased engagement on communications platforms
- # of resources provided to green team members
- # of green team mentors with capacity building tools
- # of diverse faith traditions engaged with stewardship of the Bay

### BUILD

Strengthen organizational capacity for growth and sustainability

#### STRATEGIES

- Invest in staff development and support, including equitable compensation
- Nurture a positive and inclusive team culture to attract and retain staff and board talent
- Build expertise in interfaith engagement
- Diversify funding sources and expand supporter base
- Leverage user friendly technology to build effectiveness and efficiency

#### PERFORMANCE MEASURES

- # of staff and board engaged in development and networking opportunities
- # of diverse funding sources
- Increase efficiency of data management systems
- Increase research and surveys to engage new audiences
- High percentage of staff, board, and audience report satisfaction

### RESTORE

Expand the impact of interfaith partnerships and community action

#### STRATEGIES

- Broaden and deepen the environmental impact of faith communities across the Chesapeake watershed
- Strengthen relationships with regional faith network leaders and diverse partner organizations
- Expand engagement with youth, volunteers, and congregations
- Build connections with academic, scientific, and agricultural communities

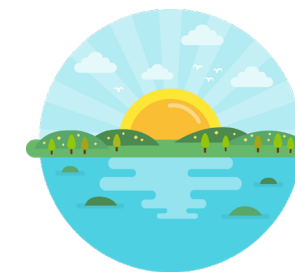
#### PERFORMANCE MEASURES

- # of stormwater practices installed
- # of trees planted and habitats restored
- # of diverse and sustainable partnerships
- # of youth engaged with green teams
- # of faith communities engaged in diverse restoration programs

## RESULTS



Communities and people of faith in the Chesapeake watershed are engaged in restoring local waterways and building lasting connections to Creation.



The Chesapeake Bay and its lands and waters are healthy, resilient, and sustainable