

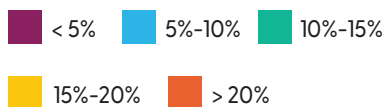
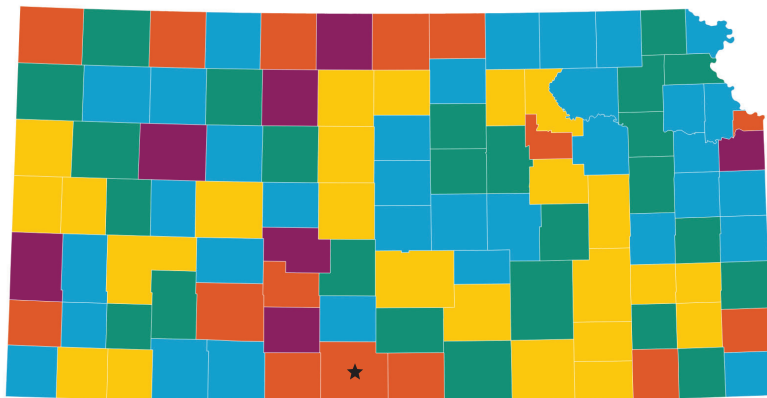
# BARBER COUNTY

## 2024 KIDS COUNT®



Kansas KIDS COUNT provides an annual snapshot of how Kansas children are doing statewide, and how they compare on a county-by-county basis. For more Kansas data, visit [www.kac.org/kansas\\_kids\\_count](http://www.kac.org/kansas_kids_count). To see how Kansas kids compare on a national level, visit <https://datacenter.aecf.org>.

### PERCENTAGE OF KIDS UNDER THE POVERTY LINE



Percentage of kids in each county that live in households with an income less than 100% of the Federal Poverty Level, which is \$24,860 a year for a family of three. Current data from 2023.

### DEMOGRAPHICS

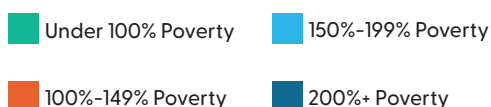
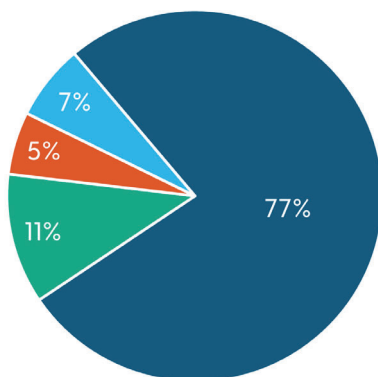
	BARBER	KANSAS
Median Household Income	\$57,615	\$72,639
Total Population of County (all ages)	4,153	2,937,569
Population of County (under 18)*	24.9%	24.0%
White	82.6%	64.0%
Hispanic	10.6%	19.9%
Black	0.1%	5.5%
Two or More Races	3.7%	15.0%
Native American	2.9%	0.7%
Asian, Native Hawaiian, & Other Pacific Islander	0.5%	2.7%

\*Due to some individuals falling into multiple categories, population percentages may not add to 100%.

### COUNTY-LEVEL DATA | BARBER COUNTY

#### POVERTY

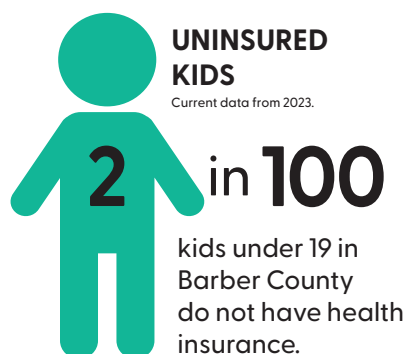
Poverty status of Barber County families.



Current data represented in the county-level pie chart is from 2023.

#### UNINSURED KIDS

Current data from 2023.



#### FOOD INSECURITY

Current data from 2023.



#### PARENTAL EMPLOYMENT IN BARBER COUNTY



# 99.3%

Percent of families with children in Barber County where at least one parent worked in the last 12 months.

Current data from 2023.

EDUCATION INDICATORS	BARBER	KANSAS	BARBER	KANSAS
<b>PRE-KINDERGARTEN</b> Percent of elementary schools that offer Pre-Kindergarten or 4-Year-Old At-Risk programs. Current data from 2023-2024 school year.	100%	66.1%	↔	↓
<b>READING PROFICIENCY</b> Percent of 3rd through 8th graders meeting standards, exceeding standards or scoring exemplary on reading assessments. Current data from 2022-2023 school year.	63.9%	67.6%	↓	↑
<b>HIGH SCHOOL GRADUATION RATE</b> Percent of public school students enrolled in the 2018-2019 school year who graduated in 2023. Current data from 2022-2023 school year.	83.7%	88.0%	↓	↓
ECONOMIC INDICATORS	BARBER	KANSAS	BARBER	KANSAS
<b>FREE AND REDUCED-PRICE LUNCH</b> Percent of public school children participating in the free and reduced-price lunch program. Current data from 2023-2024 school year.	54.1%	49.3%	↓	↑
<b>FOOD INSECURITY</b> Percent of children under age 18 living in food-insecure households. Current data from 2022.	25.4%	19.1%	↑	↑
<b>FOOD ASSISTANCE (SNAP) ENROLLMENT</b> <i>(Not depicted as a rate.)</i> Average monthly number of children participating in the Kansas Food Assistance Program. Current data from FY 2023.	91	90,620	↑	↓
<b>POVERTY</b> Percent of children under 18 years of age living below 100% poverty. Current data from 2023.	29.6%	13.1%	↑	↓
<b>PARENTAL EMPLOYMENT</b> Percent of children with at least one parent working in the past 12 months. Current data from 2023.	99.3%	97.1%	↑	↑
HEALTH INDICATORS	BARBER	KANSAS	BARBER	KANSAS
<b>UNINSURED CHILDREN</b> Percent of children under 19 with no health insurance coverage. Current data from 2023.	2.3%	5.3%	↓	↑
<b>MEDICAID ENROLLMENT</b> <i>(Not depicted as a rate.)</i> Average monthly number of children participating in the KanCare Program. Current data from CY 2023.	363	253,860	↓	↓
<b>CHIP ENROLLMENT</b> <i>(Not depicted as a rate.)</i> Average monthly number of children participating in the Children's Health Insurance Program (CHIP). Current data from CY 2023.	75	43,844	↓	↓
<b>PRENATAL CARE ACCESS</b> Percent of Kansas live births to mothers who received "Adequate" or "Adequate-Plus" prenatal care. Current data an average of 2021-2023.	93.8%	83.4%	↔	↓
FAMILY AND COMMUNITY CONTEXT INDICATORS	BARBER	KANSAS	BARBER	KANSAS
<b>CHILD CARE ASSISTANCE</b> <i>(Not depicted as a rate.)</i> Average monthly number of children participating in the Kansas Child Care Assistance Program. Current data from FY 2023.	1	9,969	↔	↑
<b>CHILD CARE CENTERS</b> <i>(Not depicted as a rate.)</i> Number of child care centers. Current data from CY 2023.	2	678	N/A	N/A
<b>FAMILY CHILD CARE</b> <i>(Not depicted as a rate.)</i> Number of Licensed Day Care Homes and Group Day Care Homes. Current data from CY 2023.	16	3,178	N/A	N/A

Questions? Contact Adrienne Olejnik, Vice President | [adrienne@kac.org](mailto:adrienne@kac.org) | 785-232-0550

Kansas KIDS COUNT is produced by Kansas Action for Children (KAC) and funded, in part, by the Annie E. Casey Foundation. The findings and conclusions presented are those of KAC and do not necessarily reflect the opinions of the Foundation. Kansas Action for Children is a nonprofit, nonpartisan organization dedicated to shaping policy that improves the lives of Kansas children and families. For data notes and sources, visit [www.kac.org/kansas\\_kids\\_count](http://www.kac.org/kansas_kids_count).

Kansas Action for Children | 100 SE 9th St., Suite 300, Topeka, KS, 66612 | [www.kac.org](http://www.kac.org)