

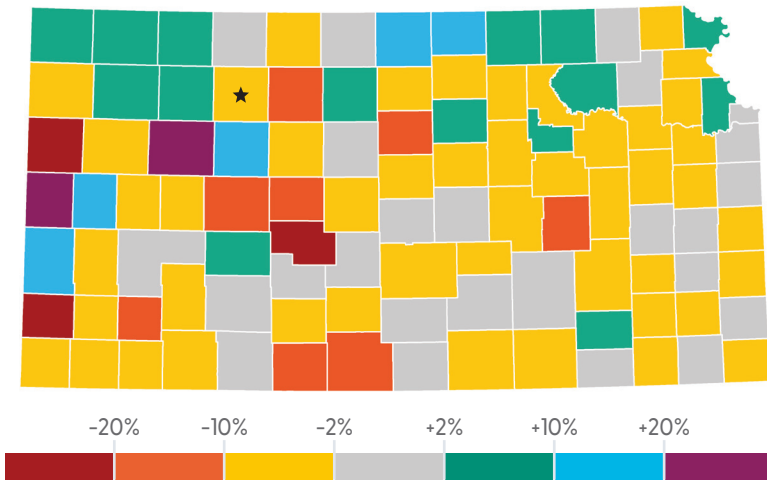
GRAHAM COUNTY

2025 KIDS COUNT[®]



Kansas KIDS COUNT provides an annual snapshot of how Kansas children are doing statewide and how they compare on a county-by-county basis. For more Kansas data, visit www.kac.org/kansas_kids_count. To see how Kansas kids compare on a national level, visit <https://datacenter.aecf.org>.

POPULATION TREND OF KANSAS KIDS (2019 VS. 2024)*



*Represents the rate of population change of Kansas kids according to the U.S. Census Bureau's American Community Survey 5-Year Estimates (2015-2019 and 2020-2024).

DEMOGRAPHICS

	GRAHAM	KANSAS
Median Family Income	\$62,813	\$95,810
Total Population (All Ages)	2,389	2,947,197
Population under 18*	20.8%	23.8%
White	85.5%	63.5%
Hispanic	6.3%	20.1%
Black	0.0%	5.2%
Two or More Races	8.7%	17.4%
Native American	0.0%	0.8%
Asian, Native Hawaiian, & Other Pacific Islander	1.8%	2.7%

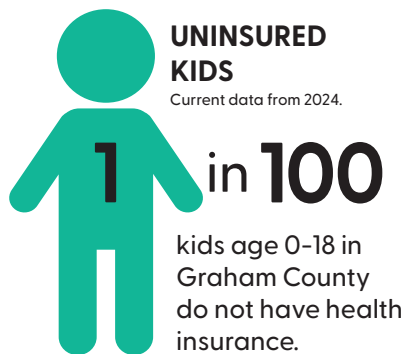
*Due to some individuals falling into multiple categories or being unknown, population percentages may not add to 100%.

COUNTY-LEVEL DATA | GRAHAM COUNTY

POVERTY STATUS OF ALL FAMILIES WITH KIDS (0-17)

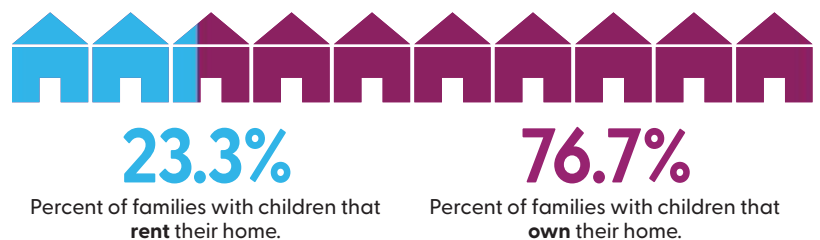
POVERTY CATEGORY (% OF FPL)	GRAHAM		KANSAS	
Less than 100% (Up to \$25,820)	98	29.3%	39,991	11.5%
100% - 129% (\$25,821 - \$33,564)	14	4.2%	18,858	5.4%
130% - 149% (\$33,565 - \$38,729)	47	14.0%	14,028	4.0%
150% - 184% (\$38,730 - \$47,766)	17	5.1%	23,776	6.8%
185%+ (\$47,767 or More)	159	47.5%	252,002	72.3%
TOTAL	335	100%	348,655	100%

Current data from 2024. The federal poverty level thresholds in parentheses are based on 2024 income levels for a family of three. These are included to give a clearer picture on what income levels are reflected in each category. However, the county and Kansas data reflects all families with children (0-17).



HOUSING STATUS OF KIDS LIVING IN GRAHAM COUNTY

Current data from 2024.



Note: "Housing Status" does not include children experiencing homelessness. According to the U.S. Department of Housing and Urban Development, 429 Kansas children were homeless in 2024.

CURRENT RATE

Calculated using the most recent available data.

TREND RATE

Calculated using the most recent available data.

EDUCATION INDICATORS		GRAHAM	KANSAS	GRAHAM	KANSAS
CHILD CARE ASSISTANCE Average monthly number of children participating in the Kansas Child Care Assistance Program. Current data from FY 2025.	5	14,540	↓	↑	
CHILD CARE CENTERS Number of child care centers. Current data from CY 2024.	0	675	↔	↓	
FAMILY CHILD CARE Number of Licensed Day Care Homes and Group Day Care Homes. Current data from CY 2024.	4	1,979	↓	↓	
PRE-KINDERGARTEN Percent of elementary schools that offer Pre-Kindergarten or 4-Year-Old At-Risk programs. Current data from 2024-2025 school year.	100.0%	66.1%	↔	↔	
READING PROFICIENCY Percent of 3rd through 8th graders meeting standards, exceeding standards, or scoring exemplary on reading assessments. Current data from 2024-2025 school year.	71.6%	67.7%	↑	↑	
HIGH SCHOOL GRADUATION RATE Percent of public school students enrolled in the 2020-2021 school year who graduated in 2024.	90.9%	89.3%	↑	↑	
ECONOMIC INDICATORS		GRAHAM	KANSAS	GRAHAM	KANSAS
FREE AND REDUCED-PRICE LUNCH Percent of public school children participating in the free and reduced-price lunch program. Current data from 2024-2025 school year.	55.0%	49.1%	↑	↓	
FOOD INSECURITY Percent of children under age 18 living in food-insecure households. Current data from 2023.	19.5%	18.4%	↑	↓	
FOOD ASSISTANCE (SNAP) ENROLLMENT Average monthly number of children participating in the Kansas Food Assistance Program. Current data from FY 2025.	56	84,556	↑	↓	
POVERTY Percent of children under 18 years of age living below 100% poverty. Current data from 2024.	13.4%	12.8%	↓	↓	
HOME OWNERSHIP Percent of families with children that live in owner-occupied housing. Current data is from 2024.	76.7%	71.3%	↓	↑	
HEALTH INDICATORS		GRAHAM	KANSAS	GRAHAM	KANSAS
UNINSURED CHILDREN Percent of children under 19 with no health insurance coverage. Current data from 2024.	0.8%	5.4%	↓	↑	
MEDICAID ENROLLMENT Average monthly number of children participating in the KanCare Program. Current data from CY 2025.	198	224,464	↓	↓	
CHIP ENROLLMENT Average monthly number of children participating in the Children's Health Insurance Program (CHIP). Current data from CY 2025.	45	57,958	↑	↑	
PRENATAL CARE ACCESS Percent of Kansas live births to mothers who received "Adequate" or "Adequate-Plus" prenatal care. Current data an average of 2022-2024.	86.3%	83.2%	↑	↓	
IMMUNIZATION COVERAGE Percent of children that have received all required vaccinations before entering kindergarten. Current data from 2024-2025 school year.	97.4%	87.0%	↓	↑	

Questions? Contact Kansas Action for Children | kac@kac.org | 785-232-0550

Kansas KIDS COUNT is produced by Kansas Action for Children (KAC) and funded, in part, by the Annie E. Casey Foundation. The findings and conclusions presented are those of KAC and do not necessarily reflect the opinions of the Foundation. KAC is a nonprofit, nonpartisan organization dedicated to shaping policy that improves the lives of Kansas children and families. For data notes and sources, visit www.kac.org/kansas_kids_count.

Kansas Action for Children | 100 SE 9th St., Suite 300, Topeka, KS, 66612 | www.kac.org