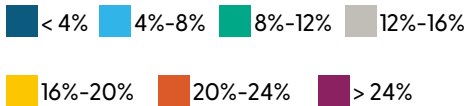
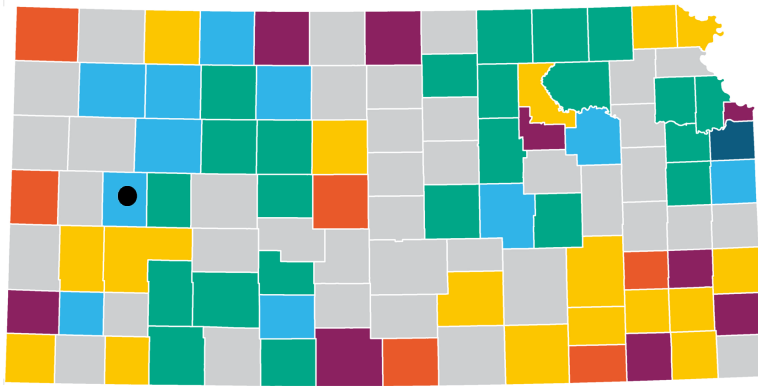


2022 KIDS COUNT<sup>®</sup>

Kansas KIDS COUNT provides an annual snapshot of how Kansas children are doing statewide, and how they compare on a county-by-county basis. For more Kansas data, visit [www.kac.org/kansas\\_kids\\_count](http://www.kac.org/kansas_kids_count). To see how Kansas kids compare on a national level, visit [www.datacenter.kidscount.org](http://www.datacenter.kidscount.org).

## PERCENTAGE OF KIDS UNDER THE POVERTY LINE



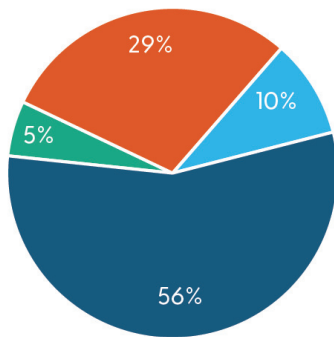
## DEMOGRAPHICS

|   | SCOTT    | KANSAS    |
|---|----------|-----------|
| Median Household Income                         | \$66,233 | \$64,128  |
| Total Population of County (all ages)           | 5,131    | 2,934,582 |
| Population of County (under 18)                 | 27.40%   | 24.01%    |
| White   | 65.04%   | 65.67%    |
| Hispanic/Latinx                                 | 30.23%   | 19.00%    |
| Black   | 0.83%    | 6.00%     |
| Two or more races                               | 1.57%    | 5.00%     |
| Native American                                 | 0.61%    | 1.00%     |
| Asian, Native Hawaiian & Other Pacific Islander | 1.72%    | 0.50%     |

## COUNTY-LEVEL DATA | SCOTT

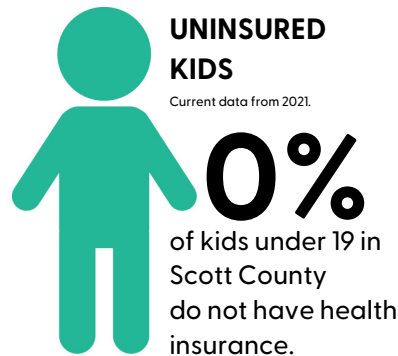
## POVERTY

Poverty status of Scott County kids under 18.



## UNINSURED KIDS

Current data from 2021.



## FOOD INSECURITY

Current data from 2021.

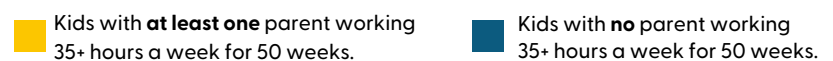


## PARENTS' EMPLOYMENT

Employment status of Scott parents with children under 18.



Current data from 2021.



Current data represented in the county-level pie chart is from 2021. To visualize trends on county-level poverty rates, use the poverty row in the Economic indicators section on the next page.

## 2022 KIDS COUNT Data | Scott County

### CURRENT RATE

Calculated using the most recent year of available data.

### TREND RATE

Calculated using the most recent year of available data.

## EDUCATION INDICATORS

### PRE-KINDERGARTEN

Percent of elementary schools that offer Pre-Kindergarten or 4-Year-Old At-Risk programs. Current data from 2021-22 school year.

100.00%

65.03%



### READING PROFICIENCY

Percent of 3rd through 8th graders meeting standards, exceeding standards or scoring exemplary on reading assessments. Current data from 2020-21 school year.

68.17%

70.39%



### HIGH SCHOOL GRADUATION

Percent of public school students enrolled in the 2015-16 school year who graduated in 2019. Current data from 2020-21 school year.

90.57%

87.93%



## ECONOMIC INDICATORS

### FREE AND REDUCED-PRICE LUNCH

Percent of public school children participating in the free and reduced price lunch program. Current data from 2020-21 school year.

38.68%

44.01%



### FOOD INSECURITY

Percent of children under age 18 living in food insecure households. Current data from 2020.

9.40%

14.60%



### FOOD ASSISTANCE (SNAP) ENROLLMENT

Average monthly children participating in the Kansas Food Assistance Program. Current data from FY 2021.

81

93,083



### POVERTY

Percent of children under 18 years of age living below 100% poverty. Current data from 2021.

5.40%

14.10%



### PARENTS' EMPLOYMENT

Percent of children with at least one parent working 35+ hours a week for 50 weeks. Current data from 2021.

74.79%

74.46%



## HEALTH INDICATORS

### UNINSURED CHILDREN

Percent of children under 19 with no health insurance coverage. Current data from 2021.

0.00%

5.13%



### MEDICAID ENROLLMENT

Average monthly children participating in the KanCare Program. Current data from FY 2021.

427

249,818



### CHIP ENROLLMENT

Average monthly children participating in the Children's Health Insurance Program (CHIP). Current data from FY 2021.

113

47,072



### IMMUNIZATIONS

Percent of kindergarteners fully immunized of the 4:3:1:3:3 series at 35 months of age. Current data from 2017-18 school year.

90.00%

71.00%



## FAMILY AND COMMUNITY CONTEXT INDICATORS

### CHILD CARE ASSISTANCE

Average monthly children participating in the Kansas Child Care Assistance Program. Current data from FY 2021.

3

9,045



### CHILD CARE CENTERS (Not depicted as a rate.)

Number of child care centers. Current data from FY 2021.

0

623



### FAMILY CHILD CARE (Not depicted as a rate.)

Number of Licensed Day Care Homes and Group Day Care Homes. Current data from FY 2021.

17

3,170



**Questions? Contact Adrienne Olejnik, Vice President | [adrienne@kac.org](mailto:adrienne@kac.org) | 785-232-0550**

Kansas KIDS COUNT is produced by Kansas Action for Children (KAC) and funded, in part, by the Annie E. Casey Foundation. The findings and conclusions presented are those of KAC and do not necessarily reflect the opinions of the Foundation. Data collection and analysis were provided by the Kansas Health Institute. Kansas Action for Children is a nonprofit, nonpartisan organization dedicated to shaping policy that improves the lives of Kansas children and families.

For data notes and sources, visit [www.kac.org/kansas\\_kids\\_count](http://www.kac.org/kansas_kids_count).

**Kansas Action for Children | 709 S. Kansas Ave, Suite 200 | Topeka, Kansas 66603 | [www.kac.org](http://www.kac.org)**