

FOCUS

on Bromley Common & Holwood

Liberal Democrats



From your Lib Dem team Alan Carter,
Carol Ann Denyer and Andrew Viner

Homesdale Road

Speed Camera Campaign by Lib Dems



Caroline Pidgeon came to Homesdale Road to meet local residents and our candidate Carol Ann Denyer

The Lib Dems have been campaigning for a speed camera on Homesdale Road for many years.

The importance of this issue has been highlighted by the spate of serious accidents over the last three years.

Lib Dem London Assembly Member Caroline Pidgeon, Chair of the London Assembly Transport Committee, had a meeting with local residents and has submitted a formal request to Transport for London for a speed camera on Homesdale Road. "I've met residents of Homesdale Road and have heard about the dangers they face every day from speeding traffic."

Caroline is committed to working with TfL to make sure the camera finally becomes a reality and Homesdale Road becomes a far safer place to live.

Listening to you on issues that matter

Train Services



Bromley commuters are facing an increase in fares without the restoration of services that were cut during the pandemic. We must invest in affordable green modes of transport if we're going to see a genuine reduction in emissions in Bromley.

Safer Streets



In surveys over the last 6 months, 84% of people told us they were worried about speeding, and 59% said they would walk or cycle more if roads were safer. The council needs to listen to local people rather than wait for accidents before making improvements.

Save our Parks



We're worried about the Council's strategy of setting up partnerships with commercial organisations to fund improvements to our parks.

We need guarantees that the community's needs will prevail.

Waldo Road Recycling Site



Time to stop the stink at Waldo Road

From a survey of over 200 local residents, 85% said that traffic congestion was a major concern and 74% said the smell was an issue.

In response to these concerns, the Lib Dems have installed two monitors near the Waldo site which are giving live readings - www.freshairbromley.org.uk. We've already seen some high readings with PM2.5 levels regularly exceeding World Health Organisation guidelines.

The Lib Dems believe that the council's failure to respond to local residents' concerns is a scandal. We have an action plan - read more at bromleylibdems.org.uk/waldo_road - it includes:

- Demanding that Veolia immediately install an air quality monitor with live data accessible to residents
- Move green and food waste to another site or sites
- Set up more micro recycling sites across the borough to avoid environmentally damaging long journeys by people from as far away as Biggin Hill who want to recycle
- Waive the fee for household collection of bulky items

STANDARDS IN PUBLIC LIFE MATTER



Are standards in Bromley better than standards in No. 10?

We have been shocked at the behaviour of the Conservative government, it feels like it's one rule for them and a whole different set for the rest of us.

Liberal Democrats in the London Borough of Bromley have for some time had concerns about a complacent and unaccountable culture within the Conservative Group on the Council which can mean that residents' interests are ignored or overridden.

We have seen little transparency over decisions, failures to consult with the community and a system that seems designed to make scrutiny difficult - too much of the Council's business is discussed behind closed doors without public access.

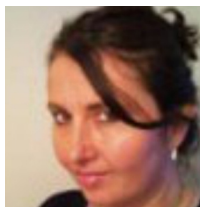
On 5th May you have a chance to show the Conservative Party that your vote cannot be taken for granted any more.

Meet your Lib Dem Candidates for 5th May



I live in the Ward. I know that residents want to be proud of where they live. This means having

air fit to breathe and safe, secure and clean streets. I have time to represent you and will be a strong voice on planning, air quality and environmental issues.



Living on Homesdale Road, I have been heavily invested in both the Waldo Road and speed camera campaigns.

Previously a local secondary school teacher, business owner and youth & community worker, I am now a SEN tutor, helping Bromley children.



I first came to live in Bromley in 1976, and have lived in Bromley Common for 10 years. Previously a Government

Lawyer, I'm interested in community, transport and environmental issues and am keen that Bromley be a place open and comfortable for all.

Alan **CARTER**

Liberal Democrats



Carol Ann **DENYER**

Liberal Democrats



Andrew **VINER**

Liberal Democrats

