

# 2018 ANNUAL REPORT



**L P F** | LEVELING THE  
PLAYING FIELD

G R E A T E R   W A S H I N G T O N



# A NOTE FROM THE DIRECTOR

Dear LPF Family,

Our mission is to give every kid the chance to get off the sidelines and into the game by supporting local, low-income programs with completely free sports equipment for their kids. I have seen firsthand the joy and gratitude our donations bring to coaches, principals, teachers, and athletes alike, and I am extremely proud of and grateful for the growth we have seen over the last few years.

2018 was huge for LPF. We opened our second warehouse in Baltimore and secured a partnership with the Baltimore Ravens; we received an \$11,000 donation from DC's Gatorade Softball Player of the Year, Logan Robinson (!); we hosted a Cleat Day event at the Ravens' UA practice facility; we joined DC United's "Every Save Makes a Difference" program with Kwik Goal; we partnered with the Caribbean Education & Baseball Foundation to get items down to the children in Cuba; and I went to Uganda and donated soccer gear to the children of Watoto!

We have set some lofty goals for the coming years in terms of expansion, and our DC office plans to remain a shining example of what a nonprofit can do with the amazing support of its local community. We are confident that every major city can benefit from LPF's mission, and we are so excited to see how our impact uniquely affects these future locations!

I am extremely lucky to lead the DC office into the coming years and work to help LPF expand and grow in order to impact as many vulnerable youth as possible.

A handwritten signature in black ink that reads "Maitlyn Healy".

**MAITLYN HEALY**

*Executive Director*

# 2018 BY THE NUMBERS



## \$1,256,744K COLLECTED

Over \$1.25M worth of sporting equipment was generously donated to the LPF DC warehouse



## \$622K DISTRIBUTED

Over \$622k worth of sporting equipment was distributed to various schools, leagues, and programs in need throughout Greater Washington



## 240+ PROGRAMS IMPACTED

240+ area programs and counting were able to access our sporting equipment resources



## 185+ NEW PROGRAMS

185+ new programs successfully went through the application process and received equipment donations



## 350+ VOLUNTEERS

Over 350 volunteers lent their time and talent to helping LPF through inventorying & sorting sporting equipment

## YOUTH SPORTS SNAPSHOT

US "STATE OF PLAY"  
PROJECT PLAY

# 37%

Kids who play a team sport on a regular basis

# 10.9%

of WEALTHY  
KIDS



# 30.5%

of LOW-INCOME  
KIDS

Physically inactive kids age 6-12



# LPF DC TESTIMONIALS

*Here is what our beneficiaries are saying about our impact:*



“Level the Playing Field's donation of athletic equipment helped our school close the gaps. Our school does not receive a budget for athletics and when we are allocated equipment from the DC Interscholastic Athletic Association, it is often not enough to accommodate all our athletes. LPF helps bridge that gap to provide resources so all our students are properly equipped. As well, with the donations, we can allocate the funds to other needs within our organization. LPF has been a great partner for SWW @ Francis Stevens and our students have directly benefited from its support!”

-School Without Walls at Francis Stevens



“Thanks to the donations received from Leveling The Playing Field, UNITY was able to confidently add a lacrosse program to our service catalog for spring 2019. We were able to mitigate the risk of high start up costs by securing equipment from LPF. We are also able to reduce the registration fee for the program from what we originally anticipated. LPF has helped us to be able to introduce a new sport to an underserved community and allows us the opportunity to provide another avenue for enrichment, encouragement and productivity which builds confidence and self esteem in our youth.”

-Walter Moyer, U.N.I.T.Y. Youth Development



“As a result of the LPF donation of sports equipment, we have been able to redirect funds that would have been spent on sports and PE curriculum required equipment to other areas such as parent engagement, behavioral incentives, etc. We have been able to replenish our stock of basketballs, soccer balls, and playground balls more regularly. We have been able to introduce additional sports such as tennis to our students. In addition, we were able to offer students sports equipment such as cleats that are required for sports outside of school that they could not otherwise afford.”

-The Foundation Schools

# LPF DC GRANTEES

*LPF donated sporting equipment to the following programs in 2018:*

100 Black Men of Prince George's County, Inc.	Blake High School
480 Club	Boys & Girls Clubs of Greater Washington Richard England Clubhouse 14
A. Mario Loiederman Middle School	Briggs Chaney Lacrosse Club
Accokeek Academy	Bronx Lacrosse
Alexandria Soccer Association	Brookhaven Elementary School
American Little League	Bruce Monroe Elementary School at Park View
Anacostia AMP Outreach	Buck Lodge Middle School
Empowerment Center	California High School Lacrosse Club
Annunciation Catholic School	Candy's Adventures
Archbishop Carroll Lacrosse Intramural Club	Capital City Lacrosse
Arcola Elementary	Capital City Public Charter School
Arlington Partnership for Affordable Housing	Cardozo Education Campus
Ashburton Elementary School	Caribbean Educational and Baseball Foundation (CEBF)
Asheville Hockey League	Carl Sandburg Learning Center
Asian American LEAD	Caroline County Family YMCA
Aspire! Afterschool	Catholic Charities: Virginia Refugee Student Achievement Project
Athletes Without Borders	Catoctin High School
Barwaaqo University	Center City Brightwood PCS
Baseball Escolar	Center City Charter School - Capitol Hill
Baseline Baseball Softball Foundation	Central High School
BASIS Washington DC	Chrisma Charities
Beacon Heights Elementary School	
Bester community of Hope	
BGCGW	
Bishop John T. Walker School for Boys	

# LPF DC GRANTEES

*(continued)*

City Of Rockville Latino Youth Development  
Cleveland Elementary School  
Clinton Boys and Girls Club  
Clinton Youth Hockey  
Club Eastern Soccer  
Congress Heights Community Training Development Corporation  
Cora L. Rice Elementary School  
Damascus High School Adapted Physical Education and Physical Education  
DC International School  
DC Scores  
DCPS Ketcham ES  
Delcastle Lady Cougar Volleyball  
Department of Parks and Recreation  
Department of Social Services/Barnaby Manor Elementary School  
Dept. of Juvenile Services - Cheltenham Youth Detention Center  
Devenio, Inc.  
Diamond City All Stars (New Carrolton Boys and Girls Club)  
Difference Makers  
DMV Heat  
Don Bosco Cristo Rey High School and Corporate Work Study Program  
Donovan Angel Foundation  
Dr. Charles Drew Elementary School  
Dr. Sally K. Ride Elementary School  
Dream Sports Africa  
Druid Hills boys lacrosse  
Eagle Academy  
Eastern Senior HS  
Elite Soccer Youth Development Academy  
Fairfax county NCS  
Fairfax Falcons Paralympic Sports Team  
First Challengers LL Baseball and Softball  
Flora M. Singer Elementary School  
Four Seam Sports, Inc.  
Freddie Simmons Developmental Football Camp  
Free College Park Community Yoga, Inc  
Friends of Emery Heights Community  
Friends of Ridge Road Baseball  
Friends of the IFL  
Fundacion Los Ninos de Maria, Inc  
G. James Gholson Middle School

# LPF DC GRANTEES

*(continued)*

Gaithersburg Middle School  
Physical Education  
Gateway Enrichment Program  
Glenallan Elementary School  
Global Impact Sport Inc.  
Goat Lax  
Golf. My Future. My Game.  
GOODProjects  
Green Bay West High School  
Wildcats Football  
Greencastle Elementary School  
Greentree Adolescent Program  
Harmony Hills ES  
Haven Universe, Inc.  
Hearts and homes for youth  
High Point HS  
Higher Achievement  
Highland Elementary  
Hockey Beyond Boundaries  
International Corp.  
Hockey is for Everibodi  
Holy Trinity Catholic Church  
Horsham Little League - Challenger  
Division  
Hyattsville Middle School Athletic  
Department  
Identity Youth  
Imagine Hope  
Imagine Lincoln Public Charter  
School  
Impact Silver Spring

Incline Lacrosse  
Infinite Evolution Youth  
Empowerment Initiative  
Inner City Excellence (DC-ICE)  
International High School at  
Langley Park  
Istrouma High School  
John F. Kennedy High School  
Kentland Columbia Park Boys and  
Girls Club  
Kings Children Of Hope  
KIPP Denver Collegiate High  
School  
KIPP Northeast Denver  
Leadership Academy  
KIPP Northeast Elementary  
KIPP Sunshine Peak Academy  
La Clinica Del Pueblo, Inc.  
Lacrosse the Nations  
Lapastora Sport Club  
Laurel Ice Dogs  
LAYC  
LAYC - Hyattsville  
Lead4Life, Inc.  
Leo Bernstein Jewish Academy of  
Fine Arts  
Life and Change Experienced thru  
Sports (L.A.C.E.S.)  
Life Connection Mission  
Life Pieces To Masterpieces  
Little Friends For Peace



# LPF DC GRANTEES

*(continued)*

MacDonald Knolls Early Childhood Learning Center  
Madison Hockey League  
Marlboro Boys and Girls Club  
Maryland Buccaneers Youth Sports Club  
Maryland Raiders  
Maryland Youth Terps Sports Academy  
MedStar National Rehabilitation Hospital Sled Hockey program  
Mel's Rink  
Mentoring Through Athletics  
Mitchell Marlins  
MKA USA / AMYA  
MOCO Movement Center  
Montgomery Blair HS  
Montgomery Sister Cities  
Montgomery Village Chiefs Football & Cheer  
Montgomery Village Middle School  
Montgomery Youth Hockey Association  
Morris Innovative High School  
Mount Rainer Sports Club  
National Academy Foundation  
School of Baltimore  
Neelsville Middle School  
Nepal Sports & Culture International  
New Community For Children  
New England Youth Tackle Football Inc.  
Nutritional Development Services  
On Deck DC  
Open Arm Concept Foundation - OACF  
Open Door Sports Inc.  
P.A.I.N.T.S. Institute  
Palmer Park Landover Boy's and Girl's Club  
Papadia United Soccer Roots USA  
Papa's Land Family Educational Advancements International  
Foundation Inc.  
Parkdale High School  
Promise Place Youth Homeless Shelter  
Protect the Children's Future (Haiti)  
Puerto Rico Baseball  
Reclaim Childhood  
Reunion Sportive d'Haiti, Inc.  
Richmond Generals Hockey U  
Riverdale Elementary  
Rock Terrace School  
Rockville Baseball Association  
Rocky Point Youth Recreation  
Roosevelt High School  
Rosedale Tigers Gentlemen's Club  
Sam Soccer  
Sasha Bruce Youthwork



# LPF DC GRANTEES

*(continued)*

Scotland Storm Community Development Inc.  
Seaford Elite Travel Football Program  
SEEC  
SIGAR  
Simply Sports, Inc.  
Snap Sports, Inc.  
So What Else Inc.  
Somerset Prep DC PCS  
South Hagerstown High School  
Special Olympics District of Columbia  
Special Olympics Virginia  
Springbrook HS  
St. Mary's Ryken High School Girls Hockey  
St. Mary's School in Landover Hills  
Starfinder Foundation  
Stop & Pop Youth Sports Charities, Inc.  
Stride Adaptive Sports  
Suitland High School  
Super Delegate F.C  
SWW @ Francis Stevens Education Campus (via Home School Association)  
Takoma Park Silver Spring Baseball  
ThanksUSA  
The Chelsea School  
The City of Hyattsville

The Fathers Heart Ministry  
The Foundation Schools  
The Gap Mission  
The Journey School  
The National Center for Children and Families  
The Wade Center  
Thurgood Marshall Academy  
TPSS Baseball & Softball Leagues  
Triumphant Leaders Youth Mentoring Program  
U.N.I.T.Y. Youth Development  
United Heroes League  
USA Hockey  
USTA Mid-Atlantic  
Vikara Village  
Walker Mill Middle School  
Washington Grove Elementary School  
Washington Nationals Youth Baseball Academy  
Washington Wheelers Blind Hockey Club  
Waters Landing Elementary School  
Watoto Ministries  
Weller Road Elementary School  
Wheaton Woods Elementary  
Wilkinsburg Baseball Association  
William B. Gibbs, Jr. Elementary School

# LPF DC GRANTEES

*(continued)*

William Wirt Middle School-TNI

Wolves Lacrosse Club Inc.

Woodrow Wilson High School

Yellow Breeches Educational Center

YMCA Capital View Youth

Development Center

YMCA Fairfax County Reston

Young Mothers Inc

Youth Organizations United to Rise

Zambia Baseball

# LPF TRAVELED TO UGANDA!



In October 2018, Maitlyn was fortunate enough to travel to Uganda and donate soccer balls and basketballs to needy kids in the villages of Bbira, Laminadera, and Suubi. One of the kids told her they had never seen a brand new soccer ball before, and their level of gratitude was off the charts. We, as Americans, are truly blessed, and it was such a gift to be able to share those blessings with the children of Uganda.

Don't those smiles make your day?!

# LPF DC COLLECTION DRIVES

*LPF received sporting equipment from the following programs in 2018:*

- Summit
- DC Dropbox
- McLean Youth Volleyball
- 1800 Got Junk
- Northwest Washington Little League
- Arlington Football League
- BCC Baseball
- Montrose Baptist Church
- Washington Mathematics Science Technology Public Charter High School
- Reuse + Replay
- Reston Skatequest
- Brooke Grove ES
- McLean Youth Volleyball
- Kettler Capitals Iceplex
- Archbishop Carroll
- Ashburn Ice House
- Kettler Ice Rink
- The BELL Foundation
- Prince George's County Little League
- Washington Nationals
- Washington Wizards
- McLean Youth Volleyball
- Boys & Girls Clubs of Greater Washington Richard England Clubhouse 14
- DC United
- Downtown United
- Thomas Jefferson HS
- Catholic University of America
- Impact Silver Spring
- Takoma Park / SS Baseball
- Under Armour



# DC FINANCIAL SUPPORTERS

**\$20,000+**

Bender Foundation  
Cafritz Foundation  
Kids Connect Network  
Montgomery County Government  
Monumental Sports & Entertainment Foundation

**\$10,000+**

Clark-Winchcole Foundation  
Fowler Foundation  
Gatorade's "Player of the Year" Fund

**\$5,000+**

Freeman Foundation  
Trawick Foundation

# DC BOARD OF DIRECTORS

**DANNY CRISWELL**

VIDEOGRAPHER, COMCAST

SPORTSNET

**LEE ELIAV**

DIGITAL MARKETING MANAGER,

MORNINGSTAR, INC.

**ERIC JAFFE**

FINANCIAL CONSULTANT, MOSAIC

WEALTH PARTNERS

**MATT MENASHES**

CONSULTANT

**JEFF PETERS, CHAIR**

ENGINEER

**MELISSA REITKOPP, VICE CHAIR**

CAREER STRATEGIST, CAREER

COMPASS/REITKOPP RECRUITING

**TRACY SCARROW, SECRETARY**

SPECIAL ASSISTANT TO CHIEF JUDGE

MERRICK GARLAND

**WILLIE TATE, TREASURER**

FINANCIAL ADVISOR, TD BANK

**EVAN WAGHELSTEIN**

SALES MANAGER, EXECUTIVE

SUITES AT MONUMENTAL SPORTS &

ENTERTAINMENT

**ALONSO ZAMORA**

OWNER, B-THRIFTY

# LPF DC FINANCIALS

4:44 PM

02/25/19

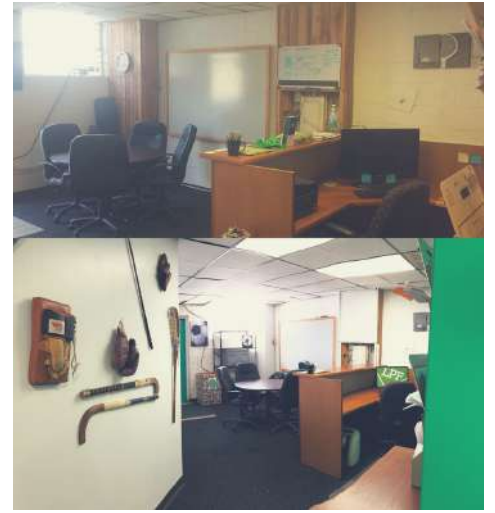
Accrual Basis

Leveling the Playing Field, Inc.

Profit & Loss by Job

January through December 2018

Ordinary Income/Expense	DC
Income	
4000 - Contributions and Donations	
4010 - Corporate Contributions	
4020 - Foundation Contributions	18,840.87
4030 - Individual Contributions	199,055.08
	73,742.84
Total 4000 - Contributions and Donations	291,638.79
4040 - Government	
4046 - County	
4046.1 - Montgomery County	43,442.00
Total 4046 - County	43,442.00
Total 4040 - Government	43,442.00
4200 - Events	5,321.58
4500 - Donated Goods and Services	600.00
4600 - Earned Income	14,270.68
Total Income	355,273.33
Expense	
8000 - Salaries and related exp	
8010 - Officer's Salary	72,501.00
8020 - Other Salaries & Wages	83,102.64
8030 - Health Ins. & Benefits	3,130.00
8033 - Payroll taxes	6,399.33
Total 8000 - Salaries and related exp	165,132.97
8100 - Contract Services	
8110 - Accounting Fees	15,093.30
8120 - Outside Contract Services	9,198.43
8150 - Fundraising fee	2,915.00
Total 8100 - Contract Services	26,106.73
8200 - Facilities and Equipment	
8210 - Rent	28,000.00
8220 - Utilities	5,731.52
Total 8200 - Facilities and Equipment	33,731.52
8300 - Supplies	7,291.21
8400 - Telephone, Telecommunications	66.11
8410 - Technology	2,049.67
8450 - Postage & Mailing Service	119.90
8460 - Printing & Copying	6,282.23
8470 - Travel and Meetings	
8240 - Equip. & Vehicle Rental	1,633.34
8473 - Meetings	748.39
8477 - Travel & Reimb	12,087.67
Total 8470 - Travel and Meetings	14,469.40
8490 - Insurance - Liability, D and O	9,339.39
8600 - Advertising/Marketing	4,782.79
8700 - Auto- Fuel, Parking, Tolls	4,615.97
8815 - Other Taxes & Licenses	129.40
8850 - Bank & Merchant Fees	579.07
8900 - In-kind expenses	600.00
Total Expense	275,255.36
Net Ordinary Income	80,017.97
Net Income	80,017.97



## RENOVATIONS AND SORTING GALORE!

*Thanks to the many volunteers who helped LPF inventory and sort donations and make major improvements to our warehouse!*

**LPF** | LEVELING THE  
PLAYING FIELD

G R E A T E R   W A S H I N G T O N

9170 BROOKVILLE ROAD  
SILVER SPRING, MD 20910  
[WWW.LEVELINGTHEPLAYINGFIELD.ORG](http://WWW.LEVELINGTHEPLAYINGFIELD.ORG)