



E-Moto Convo

June 9, 2026



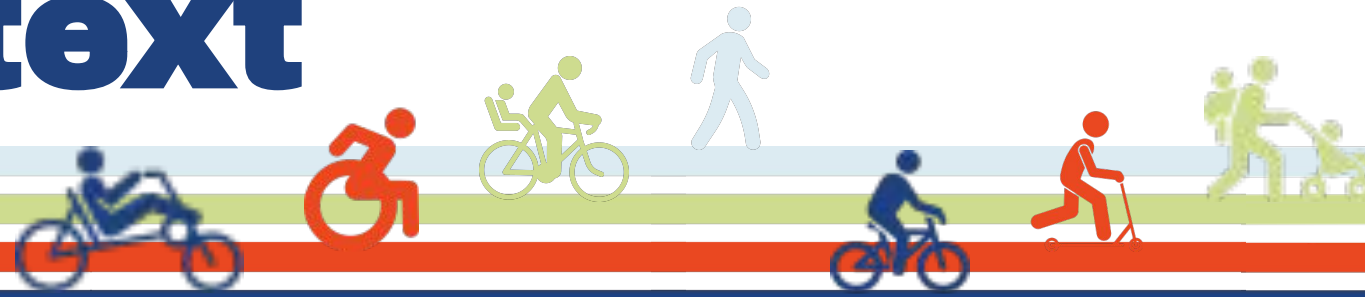


Our mission is to make it safe, accessible, and fun for everyone to bike, walk, and roll in Vermont.

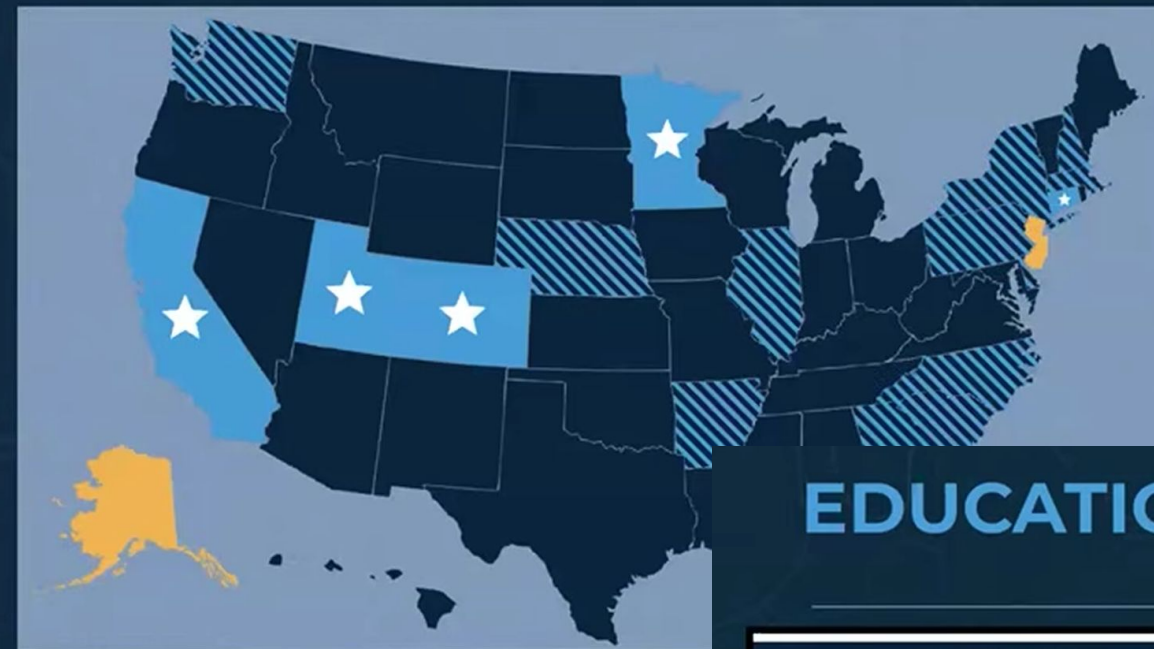


National Context

LOCAL MOTION



CURRENT STATE SOLUTIONS



States that have passed e-moto laws (star) ; a bill to address e-motos (striped). Cu

www.peopleforbikes.org/topics/electric-bikes

EDUCATION

	DESCRIPTION	WHERE CAN EACH E-BIKE / E-MTB BE COMMONLY RIDDEN?	AN E-BIKE / E-MTB IN EACH CATEGORY MIGHT LOOK LIKE...
CLASS 1 ELECTRIC MOTOR AND ASSIST (EMAS)	• 750 watt motor or less • Pedal-assist only	• Max motor-assisted speed of 20 mph • No throttle	• Most likely to be allowed on non-motorized trails • Motorized trails
	• 750 watt motor or less • Pedal-assist and a throttle	• Max motor-assisted speed of 20 mph • No throttle	• Generally not allowed on non-motorized trails • Motorized trails
CLASS 2 ELECTRIC MOTOR AND ASSIST (EMAS)	• 750 watt motor or less • Pedal-assist only	• Max motor-assisted speed of 28 mph • No throttle	• Not allowed on non-motorized trails • Motorized trails only
	• Motor greater than 750 watts • Unrestricted motor-assisted speed with throttle	• Powerful motors capable of speeds of 40-50 mph and faster • Foot pegs or aftermarket pedal kits	• Motorized trails only • Tracks and skills courses open to motorized vehicles • Not allowed on non-motorized trails



E-Bikes vs. E-Motos
Legal Distinctions,
Legislative Strategies,
and Regulatory Actions

VIRTUAL EDUCATION SERIES
SHAPING THE FUTURE OF BICYCLING



VT E-BIKE REGULATIONS

3 Classes

	Class 1	Class 2	Class 3
Pedal Assist	✓	✓	✓
Throttle		✓	
Assist Cut-off Speed	20 MPH		28 MPH
Power Limit	750 watts		

Not motor vehicles

Do Not Need

- registration
- inspection
- title
- license



Must have fully operable pedals

Must follow same rules of road as conventional bicycles

Operators are vulnerable users

May be ridden in all places where bicycles are allowed: bike lanes, multi-use paths, highways

Regulation information is sourced from the website of the Legislature of the State of Vermont.



E-bikes vs E-motos

Max Speed	20 MPH ¹	No Maximum
Max Power	750 W ²	No Maximum
Requirements	None	License, Registration, Insurance, and Plates
Sidewalks & Shared Use Paths	Allowed ²	Not Allowed
What the law treats it as	Bicycle	Motor Vehicle

1: Class 3 e-bikes can go 28 MPH with pedal assist, and users must be 16 years or older

2: Motor-assisted bicycles with a 1000 W motor can not ride on sidewalks, but are bicycles

6,000W motor

37 MPH

Ride with the TuttioGang

“Chosen by families across the U.S.”

“The Soleil01 SE is best suited for teens aged 13 and



Onyx RCR
18,000W motor
65 + MPH



Tutto
6,000W motor
37 MPH

Talaria
6,000W motor
47 MPH



ASKGO
1,500W motor
25 MPH





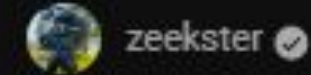
How to convince your parents to ge...

1.8M views



The Cheapest "Street-Legal" E-Bike!

115K views · 7 months ago



Today, we test the cheapest street-legal electric bike through the c

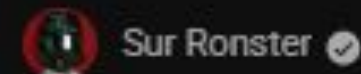
4K

Summary Zeekster tests the TST R002 ebike, exploring its



I Took a Walmart Bike to "Mini Madness"

9.8M views · 10 months ago



Insane 72v razor electric mini dirt bike at a mini bike takeover meq

4K

Summary Sur Ronster braves the chaotic annual Los Ange



The Path Forward

**LOCAL
MOTION**

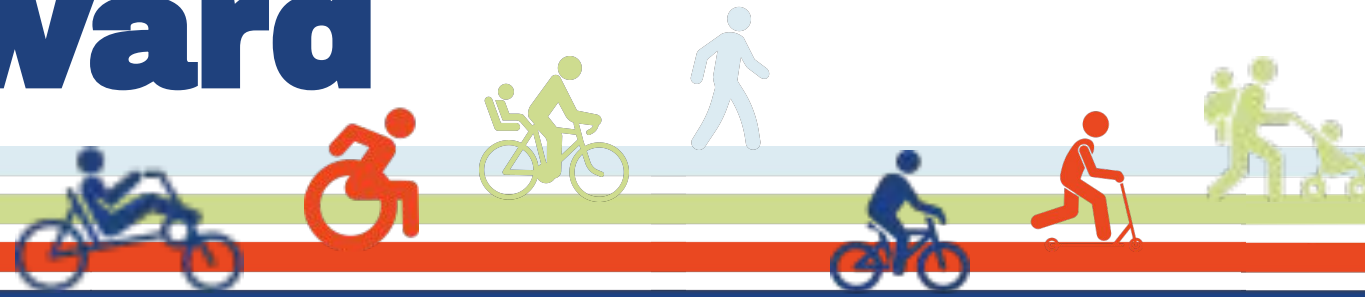


State Level

- Strengthen definitions, align with national recommendations
- Ban deceptive marketing practices
- Regulate sale of devices

The Path Forward

LOCAL
MOTION



Local Level

- Focus on enforcement of existing regulations
- Education & Outreach - consumers, families, retailers
- Avoid adoption of inconsistent language
- Reinforce & Supplement state language
 - *Define facilities e-motos aren't allowed*



Thanks for joining us...

Christina Erickson, Executive Director

christina@localmotion.org

**Jack Evans, Complete Streets
Specialist**

jack@localmotion.org

- **What are you seeing in your community?**
- **What enforcement challenges exist locally?**
- **What would help most to support your community?**

