

January 2024

Get to know your Green Bin and much more! (as part of Green in the City)

Learn about London's new program, biweekly garbage pickup and how the collection schedule is changing



#LdnOnt
ClimateAction

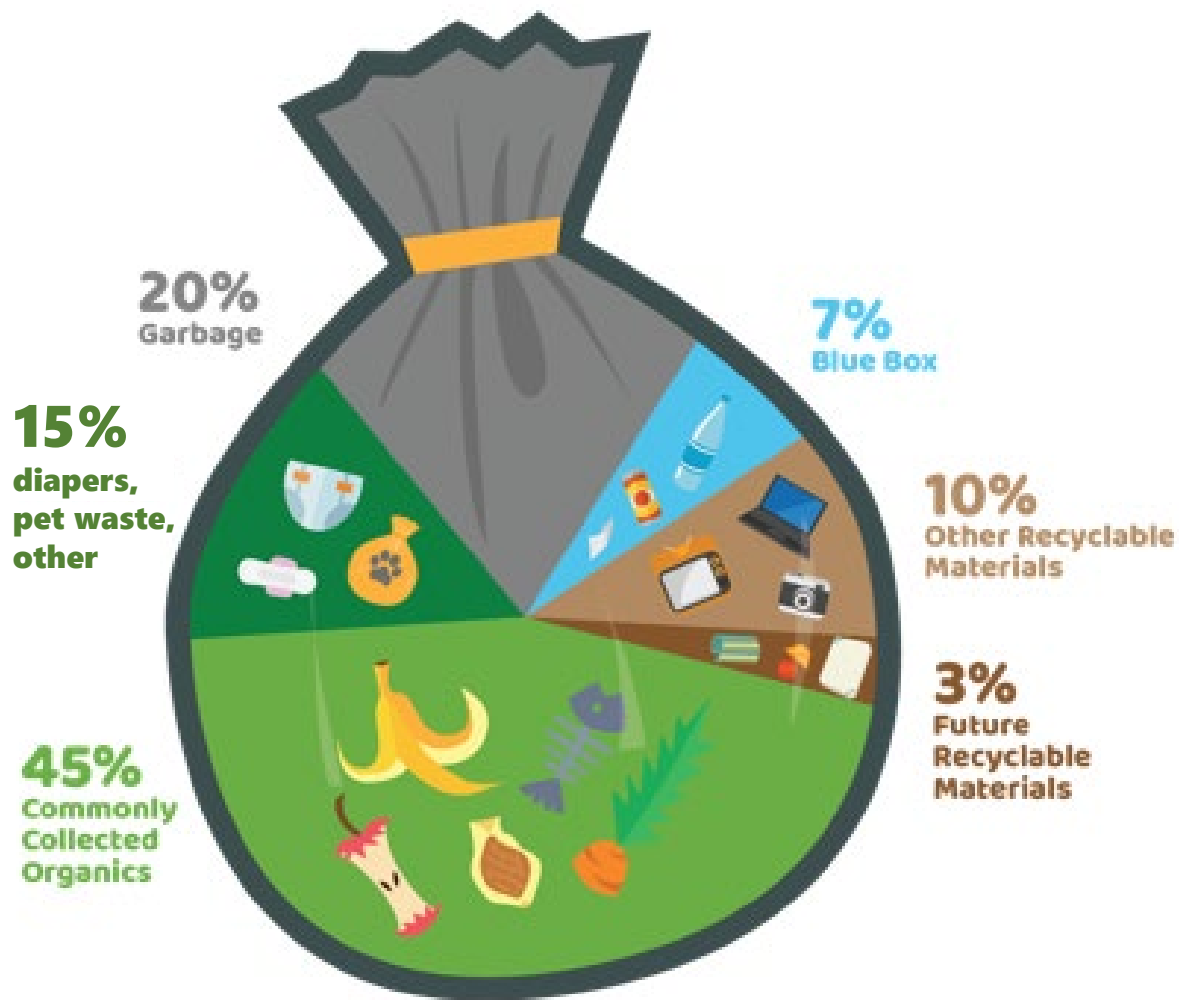




Outline

- The Why
- The Program
- The Changes
- What's Next
- Some Frequently Asked Questions (and Answers)

Understanding food waste: the questions and answers are in the bag!



General Items	Estimated % of Garbage (by weight)
Avoidable food waste	23%
Unavoidable food waste	12%
Other common organics	10%
Total by weight	45%

What does avoidable food waste look like?



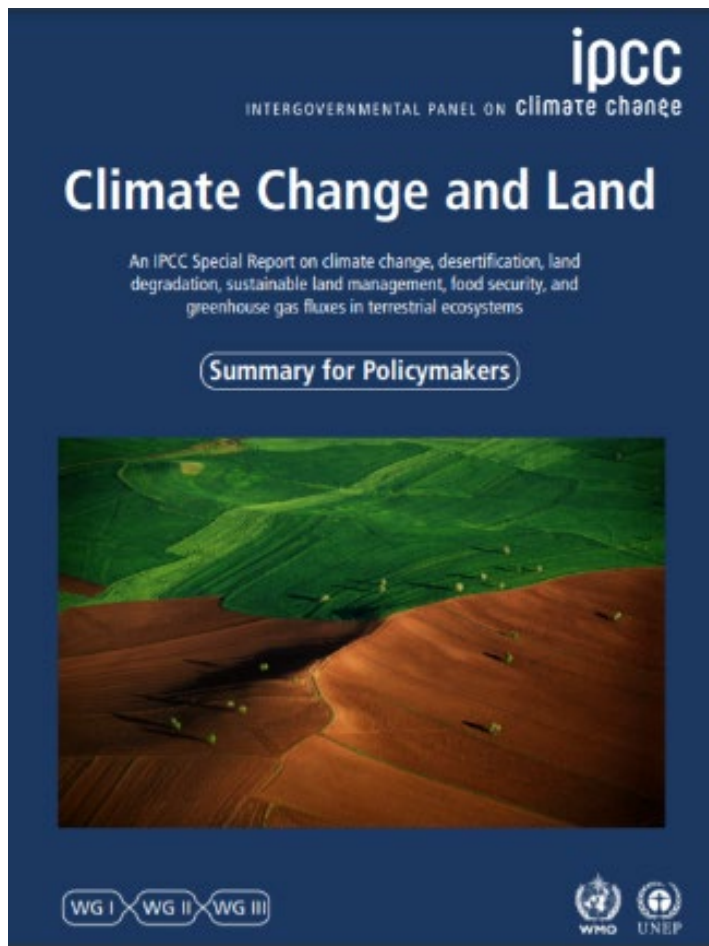
5 easy tips to avoid food waste

1. Shop wisely – plan ahead
2. Portion control
3. Store food correctly
4. Use food completely
5. Embrace a leftovers day!!!



**TOO GOOD
TO WASTE**

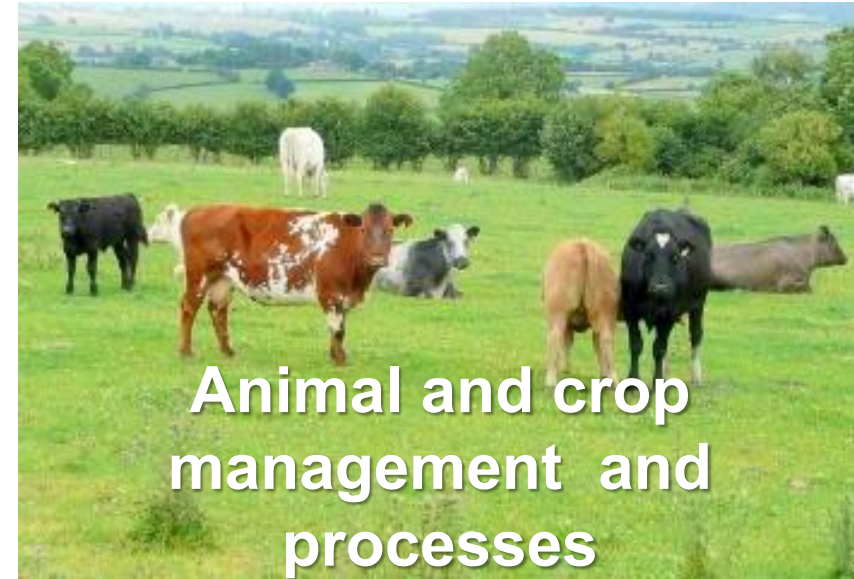
Food and climate change – the big picture



"the food system as a whole — which includes food production and processing, transport, retail consumption, loss and waste — **is currently responsible for up to a third of our global greenhouse gas emissions.**"

Source: press conference releasing the *Special Report on Climate Change and Land*, report, 2019

Food and climate change – the big picture



Food waste and your wallet



- About \$1,000 per household in avoidable food waste is tossed in the garbage per year
- That adds up to about \$100 to \$120 million per year
- This does not include food from restaurants, food courts, businesses, etc.

Food waste, your wallet and climate change



- About \$1,000 per household (\$100 to \$120 million per year) in avoidable food is wasted in London per year

Choices and Opportunities Exist:

- 10% reduction = \$10 to \$12 million saved locally
- Greenhouse gas reduction potential local and global ~30,000 tonnes/year



Food waste and Ontario's laws



“70% waste reduction and resource recovery of food and organic waste generated by single-family dwellings in urban settlement areas by 2025”

“50% waste reduction and resource recovery of food and organic waste generated at the building by 2025”

Home composting and digesting

Home Composting

Let's break it down!

A simple, inexpensive way to take climate action, reduce your garbage, and make great soil for your lawn and garden.



Get a composter

Composters are available from City of London EnviroDepots for \$20 (includes tax).

Home composting and digesting



Bardmatic™ Digester

- Food and pet waste



FCMP Dual Chamber Tumbling Composter™

- 140 litres, 5 ft³
- Fast results!
- Assembly required



Enviro World FreeGarden™

- 310 litres, 11 ft³
- No assembly required



Gracious Living™ Composter

- 350 litres, 12.4 ft³

Quick summary

The 3 Rs

REDUCE

REUSE

RECYCLE

Food and Some Organics

Buy what you need

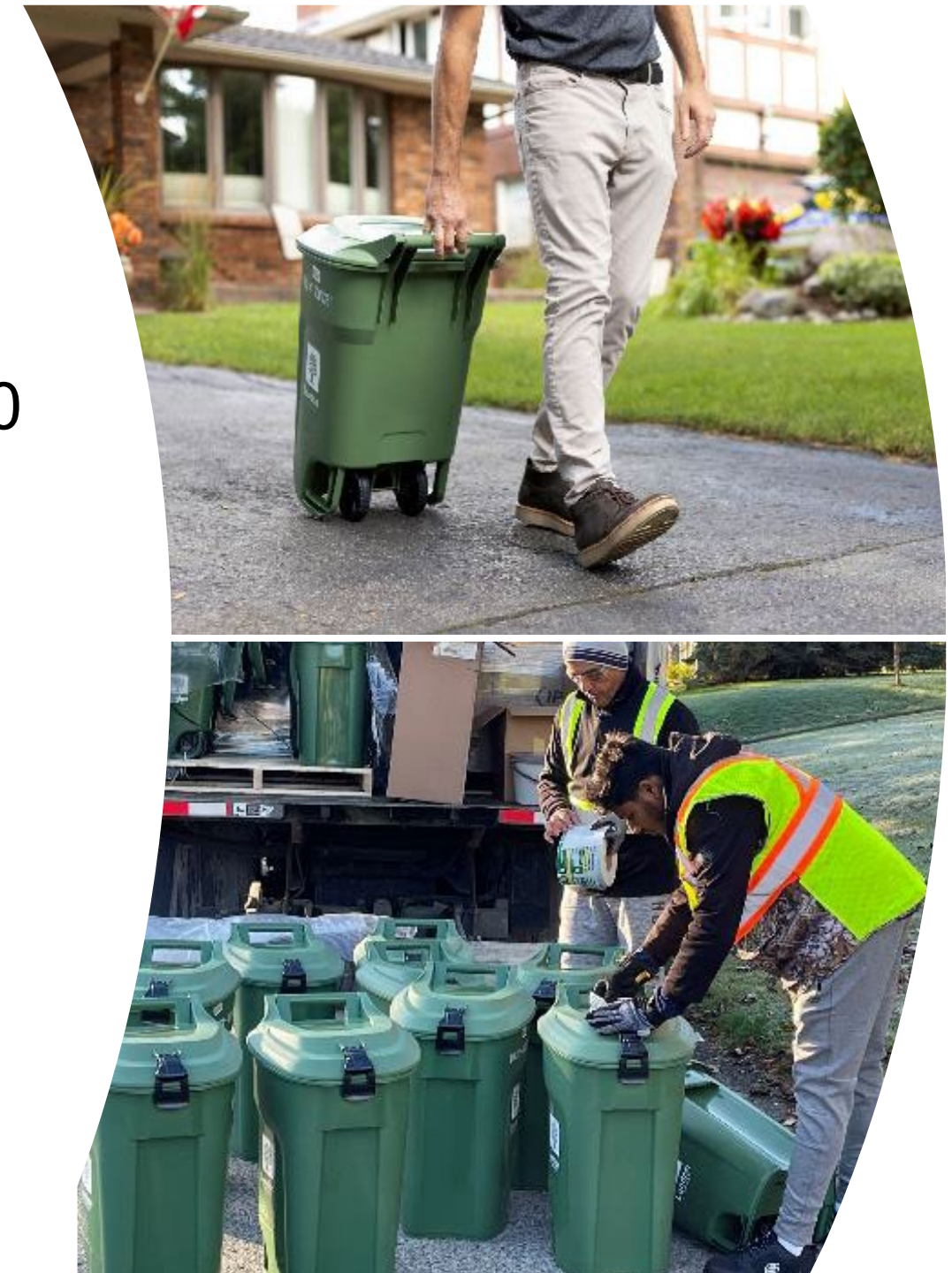
Avoid food waste

Manage what's left
(on-site composting or Green Bin)

Green Bin delivery

As of January 8, 2024:

- Green Bins delivered to about 123,500 households with curbside service
- 600 more Green Bins being delivered this week
- Community Green Bin Carts (for centralized pickup) delivered to about 2,600 households
- To do – 60 townhome complexes with 3,900 units



Reminder - what was delivered

Curbside Green Bin and Kitchen Container

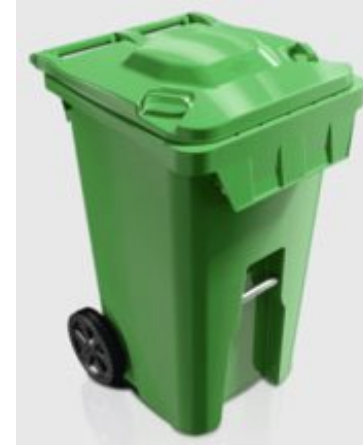
45 litres



7 litres

Collection Point - Community Green Bin Cart and Kitchen Container

120
litres



7 litres



... and other information

What goes in the Green Bin – all in the Guide

Food Waste	Food-soiled Paper Products	Other Items
<p>All food waste including:</p> <ul style="list-style-type: none">• Eggshells• Bones• Shells from nuts or seafood	<p>“Food-solid paper” is the key phrase:</p> <ul style="list-style-type: none">• Paper napkins, paper towel, tissues (free of contaminants)• Paper plates, cups, muffin wrappers• Greasy pizza boxes• Cardboard egg cartons	<p>Look at the Guide; there are a few other items:</p> <ul style="list-style-type: none">• Household plants (including soil), cut flowers• Wooden stir sticks, etc.• Waxed paper• Newsprint, paper bags (to wrap food and line containers)

X Keep these items out of the Green Bin

- | | |
|---|--|
| <ul style="list-style-type: none">• Chewing gum• Cigarettes• Clothing and textiles• Diapers, incontinence products and wipes• Elastic bands• Food stickers• Glass | <ul style="list-style-type: none">• Painted or treated wood• Pet waste and kitty litter• Plastic items – all of them (utensils, bags, trays, packaging, etc.)• Yard waste (separate system) |
|---|--|

If in doubt; keep it out

Managing pet waste, diapers, incontinence products

- Households with these waste items will be required to hold onto them 4 to 6 days longer than the current garbage collection system
- EnviroDepots represent an opportunity if service is needed before a scheduled pickup for a fee of \$2.00
- On collection day, any bag or container above the 3 container limit, will require a \$2.00 tag
- Four, 3 container limit exemption periods occur



Kitchen container/Green Bin liners (not provided) - household choice



Kitchen container liners

\$0.15 to \$0.67 per bag

Green Bin liners:

\$0.37 to \$1.50 per bag

Community Green Cart liners:

\$0.80 to \$1.60 per bag

Collection schedule: what's changing?

- **Weekly:** Green Bin and Blue Box collection (except for Stats)
- **Bi-weekly:** Garbage collection
- Yard waste collection will occur **every five weeks instead of every six weeks** during the spring and summer and **every two to three weeks** during the fall
- Large bulky items **must be booked** to schedule a pickup; medium bulky items are placed with regular garbage



Collection: number of pick ups

Collection Service	Current Services – Number of Pickups/Year	Proposed Services – Number of Pickups/Year
Green Bin	0	50
Garbage	42	26
Blue Box	42	50
Total Pickups	84	126



Collection: large furniture and large bulky items



Households need to book the pick-up of large items on collection day.

- Book at least 5 business days in advance, online at service.london.ca or by phone at 519-661-2489
- Collection will occur on next scheduled garbage day

Medium items - Do not require booking

- Up to 1 metre wide and 1.5 metres tall
- Generally requires 1 person to place at curb
- 2 cubic metre limit per collection

Large items - Requires booking

- Over 1 metre wide and 1.5 metres tall
- Generally requires 2 people to place at curb
- 4 item limit per collection

New 2024 collection schedule

Example Schedule

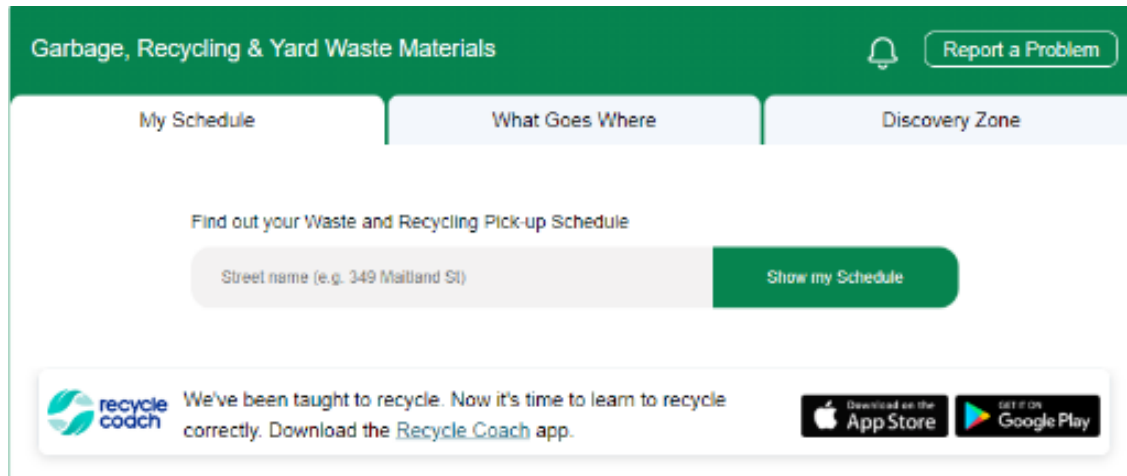
JANUARY 2024						
S	M	T	W	T	F	S
	1	2	3	4	5	6
Use the short-term Calendar from October 1, 2023 until January 12, 2024.						
14	15	16	17	18	19	20
			   			
21	22	23	24	25	26	27
			  			
28	29	30	31			
			   			

FEBRUARY 2024						
S	M	T	W	T	F	S
				1	2	3
4	5	6	7	8	9	10
			  			
11	12	13	14	15	16	17
			   			
18	19	20	21	22	23	24
				  		
25	26	27	28	29		
			   			

- A new Guide and the 2024 collection schedule was inside your Green Bin
- London is divided into 5 Zones (each zone is split in two)

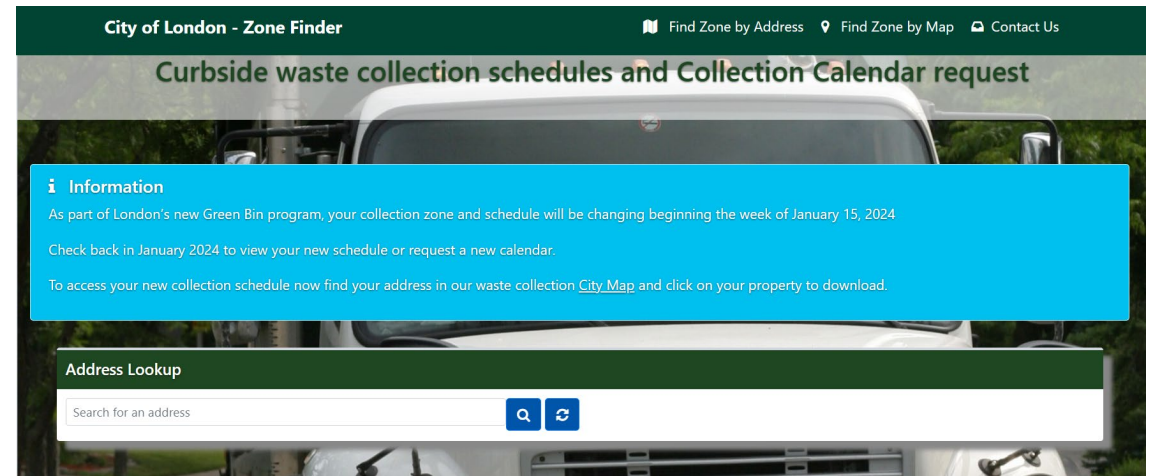
Tools to help you never miss a collection day

1. Recycle Coach app



To access collection schedules, receive reminder notifications, or help answer questions about what items go where.

2. Zone Finder tool



To view your zone and schedule online. You can also request a digital copy of the Calendar be emailed to you.

3. For more information visit london.ca/collection-calendar



**Products to be
produced from your
Green Bin materials**

Convertus Group – composting facility on Wellington Road South

- Nutrient-rich organic product for use on farm fields
- Limited amount of compost
- Fertilizer



Monitoring and reporting back

After
Launch -
monitoring
system to
determine:

- The level of household satisfaction with the Green Bin, bi-weekly garbage and other collection program changes:
 - Focus - managing pet waste
 - Focus - managing diapers and incontinence products
- Report back in June and December 2024

Multi-residential Green Bin pilot project



- Green Bin systems are much more challenging in multi-residential buildings
- Council has supported looking at a small pilot project (“Green Cart”)
- Discussion are being held with property managers at between 10 and 15 “pilot” locations
- Start up will be in the next couple of months



(Some) Frequently asked questions

What if I don't have a Green Bin yet?	Contact us
My Green Bin was stolen. Can the City provide me with a new one?	Contact us; initially yes, Green Bins have bar codes
Can I get a second Green Bin?	Not at this time. We are looking at retail options
What happens in my Green Bin is damage by the collector?	Contact us; the situation will be reviewed
I'm a tenant who's moving to another place. Do I take the Green Bin with me?	No, leave behind
I'm composting in my backyard, and I don't need the Green Bin. How can I return it?	Contact us
Why can't I use a plastic bag as a liner?	Plastic does not compost and it is costly to remove



Top 3 frequently asked questions - #3

#3 Why can't pet waste go in the Green Bin?

- Pet waste is often in plastic bags; and plastic bags are not one of the permitted liners (mixed message on plastics)
- About half the Green Bin municipalities reviewed do not permit pet waste in the Green Bin
- London is focusing on “clean organics”
- Pet waste in the Green Bin would be an added cost of about \$400,000 per year
- Make sure you provide feedback for the June review



Dog Licensing and Control By-law - PH-4

3.10 Excrement - failure to remove - dispose - prohibited

No person shall, within the City of London, fail to forthwith remove and dispose of dog excrement from any property within the City.

Top 3 frequently asked questions - #2

#2 How do I handle diapers or incontinence products?

- Diapers and incontinence products are to be handled as garbage and collected every second pickup
- Most municipalities do not offer a special collection service
- Extra bags or containers can be placed at the curb for \$2
- Keep in mind that a “container” actually holds a couple of bags – watch the weight (maximum weight is 20 kg)
- Make sure you provide feedback for the June review



Top 3 frequently asked questions - #1

#1 Why is garbage collection biweekly?

- To encourage the use of the Green Bin
- To encourage more waste reduction, reuse and recycling of other materials
- Food waste - one of the most odourous portions - is collected 50 times per year
- To keep costs as low as possible for the Green Bin program
- Consistent with most other municipalities with Green Bin
- Make sure you provide feedback after the launch for the June review

MARCH 2024						
S	M	T	W	T	F	S
					1	2
3	4	5	6	7 	8	9
10	11	12	13	14 	15	16
17	18	19	20	21 	22	23
24	25	26	27	28 	29	30
31						

Thanks for listening

- Your participation is essential to the success of these changes
- Patience will be required as we all adjust
- Thanks for joining tonight . . And there is a lot more to share

