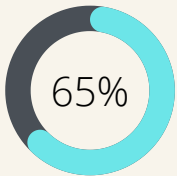


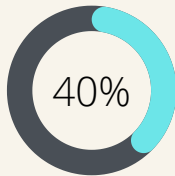
# How Can Municipal Light Plants Advance Energy and Environmental Justice

## Definitions

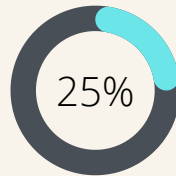
- **Environmental Justice:** Environmental Justice (EJ) is the fair treatment and meaningful involvement of all people regardless of race, color, national origin, or income.
  - In Massachusetts, a neighborhood is defined as an Environmental Justice population if one or more of the following four criteria are true:



The annual median household income is not more than 65% of the statewide annual median household income



Minorities comprise 40% or more of the population



25 % or more of households lack English language proficiency



Minorities comprise 25% or more of the population and the annual median household income of the municipality in which the neighborhood is located does not exceed 150% of the statewide annual median household income

- **Energy Justice:** The goal of achieving equity in both social and economic participation in the energy system while remediating social, economic, and health burdens on groups historically harmed by the energy system ("frontline communities.")
  - This can be broken down into three subcategories:



Energy Democracy  
who decides?



Energy Access  
shutoffs & restoration



Energy Burden  
costs & pollution

## Culture

- Environmental & energy justice starts with the way an org approaches its work
  - **Democracy**
  - **Accessibility**
  - **Transparency**
  - **Engagement**
  - **Accountability**



**MLPs have unique tools to address justice:**

- Less regulation than IOUs
- Smaller scale operating area
- Potential for creativity

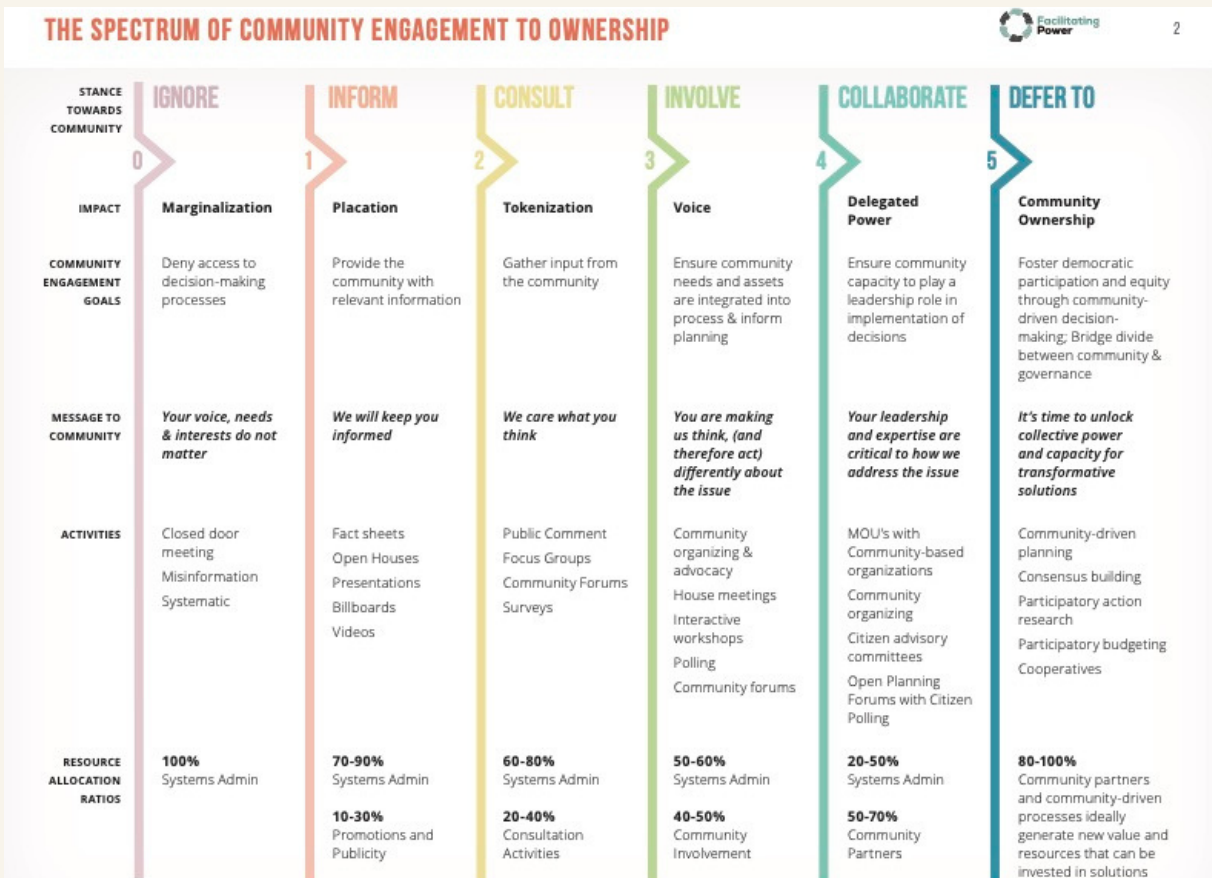
**Flexibility + Autonomy + Vision  
=  
Climate Justice Solutions**

# 5 Actions That MLPs Can Take

A systemic and cultural shift to incorporate justice into MLP actions includes:

- 1 Develop an Environmental Justice statement, policy, or commitment in partnership with all local residents
- 2 Reduce the energy burden of vulnerable communities in your district
- 3 Systematically consider the justice implications when developing policies and making investment decisions
- 4 Take on the community's fair share of burden in the state's transition to a clean energy future
- 5 Institutionalize and practice procedural justice

## Procedural Justice



Source: The Spectrum of Community Engagement to Ownership, Rosa Gonzalez & Facilitating Power, <https://bit.ly/3Nq78Ca>