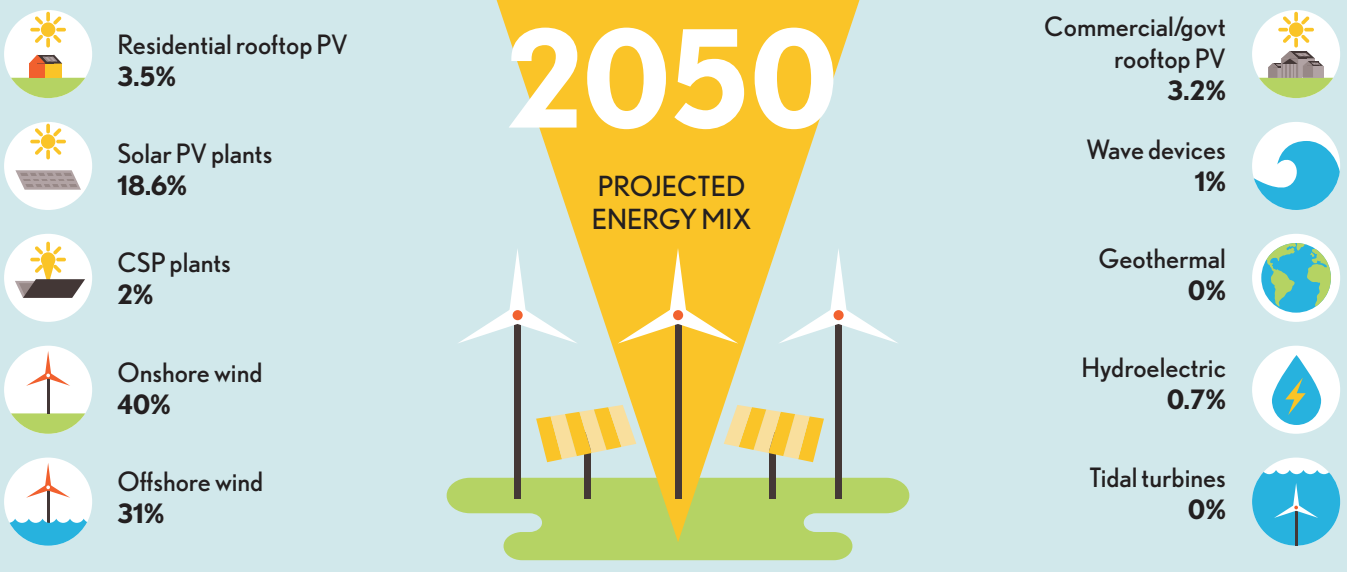
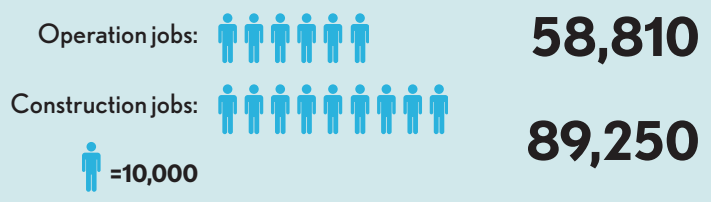


# 100% MICHIGAN

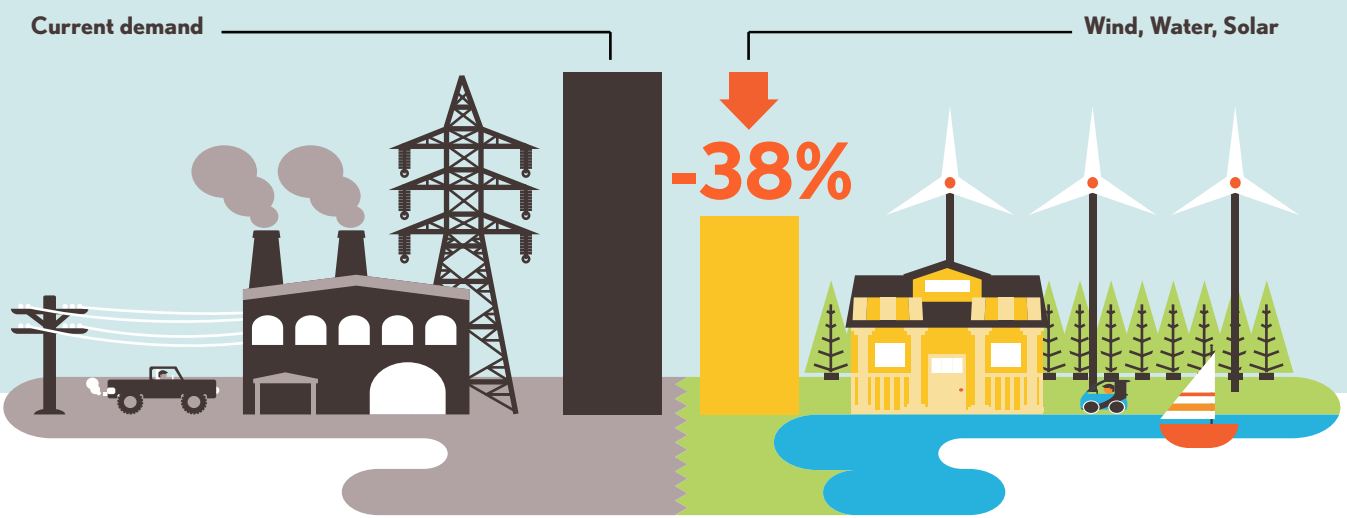
Transition to 100% wind, water, and solar (WWS) for all purposes  
(electricity, transportation, heating/cooling, industry)



**40-Year Jobs Created**  
Number of jobs where a person is employed for 40 consecutive years



Using WWS electricity for everything, instead of burning fuel, and improving energy efficiency means you need much less energy.

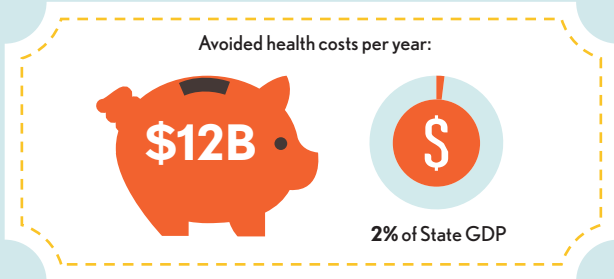


VISIT [THESOLUTIONSPROJECT.ORG](http://thesolutionsproject.org)  
TO LEARN MORE AND [100.ORG](http://100.org) TO JOIN THE MOVEMENT

# 100% MICHIGAN

Transition to 100% wind, water, and solar (WWS) for all purposes  
(electricity, transportation, heating/cooling, industry)

## Avoided Mortality and Illness Costs



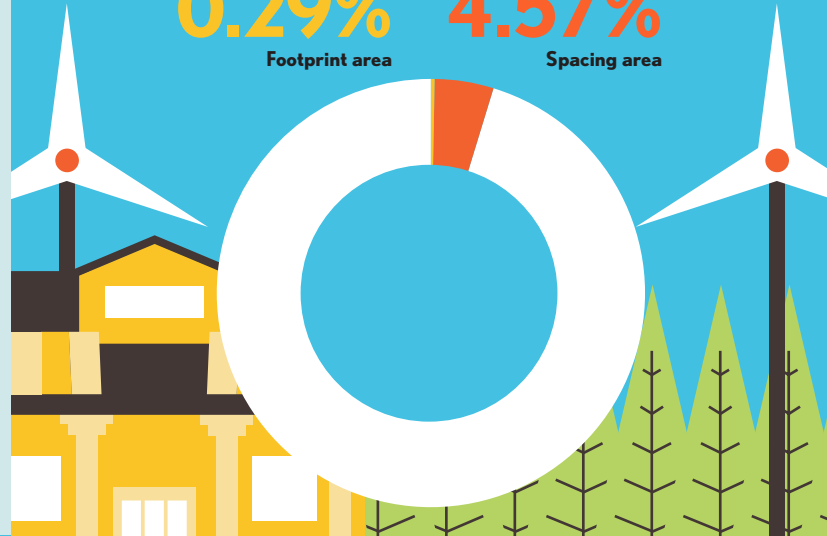
Air pollution deaths avoided every year: 1744



Plan pays for itself in as little as 3 years from air pollution and climate cost savings alone

## Percentage of Michigan Land Needed for All New WWS Generators

**0.29%** Footprint area  
**4.57%** Spacing area



## Future Energy Costs 2050

BAU (Business as usual) WWS (Wind, water, solar)



U.S. average fossil-fuel energy costs\*

**10.8 c/kWh**

\*Health and climate external costs of fossil fuels are another 5.7c/kWh



State average WWS electricity costs

**11.4 c/kWh**

## Money in Your Pocket

**(P) = \$2,000**

Annual energy, health, and climate cost savings per person in 2050: **\$10,932**



Annual energy cost savings per person in 2050: **\$157**



**VISIT [THESOLUTIONSPROJECT.ORG](http://thesolutionsproject.org)**

**TO LEARN MORE AND [100.ORG](http://100.org) TO JOIN THE MOVEMENT**

THE  
**SOLUTIONS**  
PROJECT

Data from Stanford University - For more information, visit  
<http://go100.me/50StateTargets>

FOLLOW US ON



100isNow



SolutionsProj