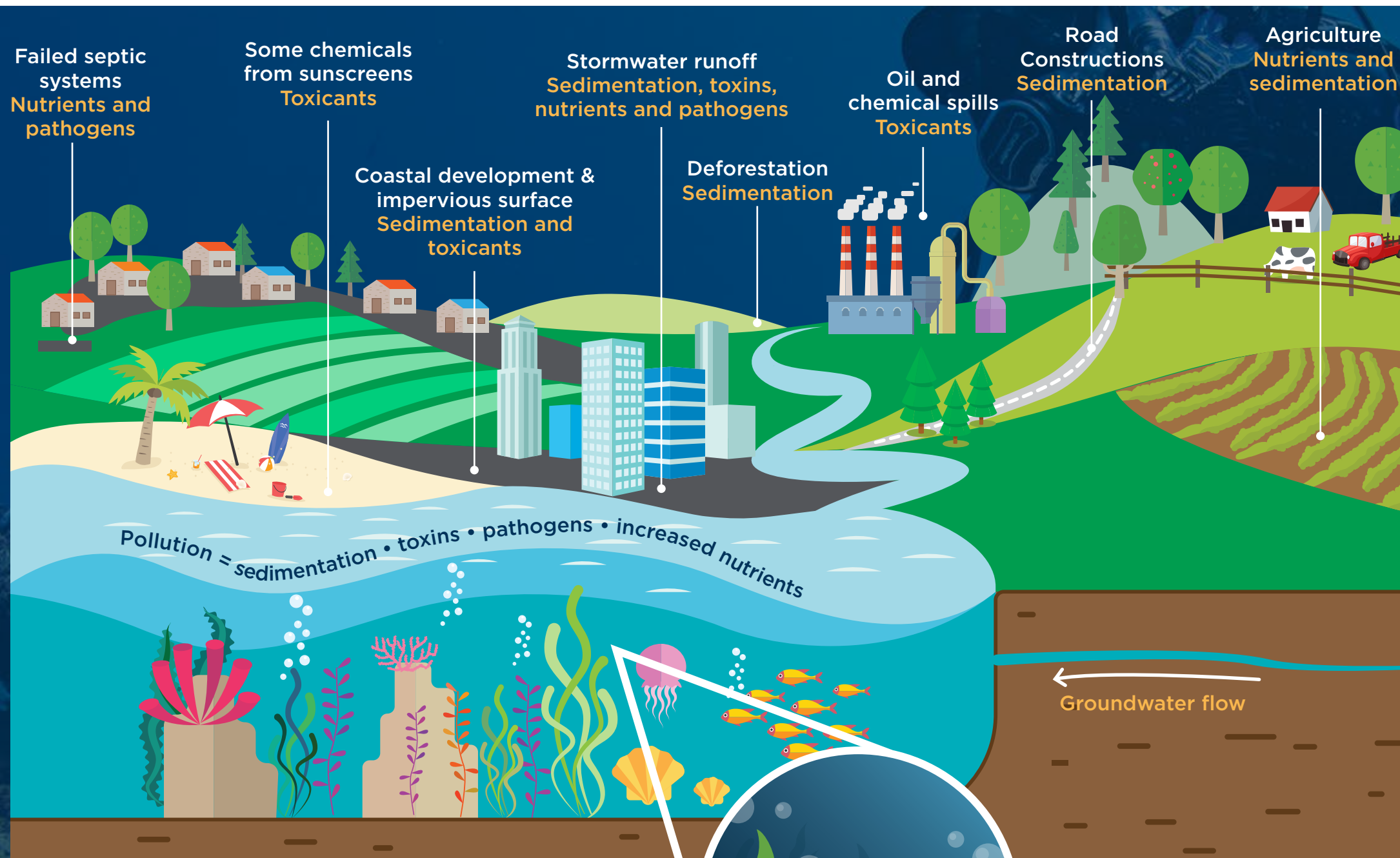


THREATS TO CORAL REEFS

Land-Based Sources of Pollution



POLLUTION

- Sedimentation
- Toxicants
- Pathogens
- Increased Nutrients

- Causes Disease and mortality
- Disrupts ecological functions
- Changes dynamics and feeding behaviours
- Prevents coral growth and reproduction



As human population & development expands in coastal areas, the landscape is altered, increasing land-based sources of pollution & **THREATENING CORAL REEF HEALTH**

How You Can Help

Apply fertilizers and pesticides sparingly.



Pick up after your pets.



Wash your car on your lawn.



Dispose of lawn clippings in a compost pile.



Harvest rooftop rain water through rain barrels or rain gardens.



Do not dump paint, oil, antifreeze, debris or other household chemicals into street gutters or storm drains.



Clean up spilled brake fluid, oil, grease, and antifreeze.



Maintain proper septic system function with inspections and pumpouts every 3-5 years.



Seek shade between 10am and 2pm, use Ultraviolet Protection Factor (UPF) sunwear, and choose sunscreens with chemicals that don't harm marine life.



For further information about this and more, visit our website - www.reefcheckaustralia.org.