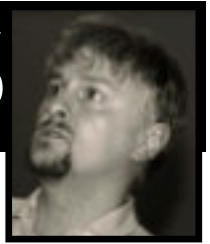




Gareth EPPS



Contact: garethhepps@gmail.com

An experienced, radical voice

I was a member of SLF council from 2010-14 and its Co-Chair from 2012-14. After a period of political restriction, I'd like to rejoin Council at a pivotal time in British politics.

Just like the Liberal Democrats, SLF needs vision and direction. The statement at the last AGM about helping the party identify a vision remains timely, and we should prioritise this. Amid a

This election may set SLF's direction for a critical post-election period

cost of living crisis and the noise of Tory culture wars and in a volatile environment, SLF has a role in ensuring a

distinctly social liberal and radical direction for the party, in a collaborative way with other progressive forces leading up to a General Election.

SLF must also be inclusive, or it is nothing. I will prioritise making sure it is a safe and welcoming space for all who share liberal values, confident to debate free from discrimination.

I hope you will back my experience and record in speaking truth to power inside and outside the party.

My record:

- 💣 11 years' FPC experience since 1998
- 💣 Held all sorts of party roles over 25+ years
- 💣 Former councillor in Reading and West Oxfordshire; former group leader holding the balance of power.
- 💣 Stood in 2010 General Election in Reading East, and 2001 against one D. Cameron!
- 💣 Co-Chair of Social Liberal Forum 2012-14
- 💣 Member of Liberator Collective
- 💣 Politically restricted since 2016; on hiatus for much of the time since, but vice chair of my ['non-political'] Town Council, fronting the Glee Club again, and a member of Oxfordshire Compass

Please give me your FIRST preference if at all possible - so I can continue to work for YOU!

For a radical, experienced voice on Council