

# Hogans Creek Restoration & Trail Plan Presentation

April 11, 2022



# Agenda

- Introductions
  - Recap by Kelly Rich & meeting format
- Focus on Community Feedback
  - Flooding assessment
  - Klutho Park components
  - Parking & road modifications
  - Historical elements
- Next Steps
- Q&A





# Community Feedback

- **Update** the Springfield residents with **programming**, stream **restoration**, and **design concepts**
  - **Nothing** shown today is final
- **Community feedback**
  - Flood mitigation and flood risk reduction
  - Balustrades
  - Creek alignment
  - Road closures and parking
  - Amenities



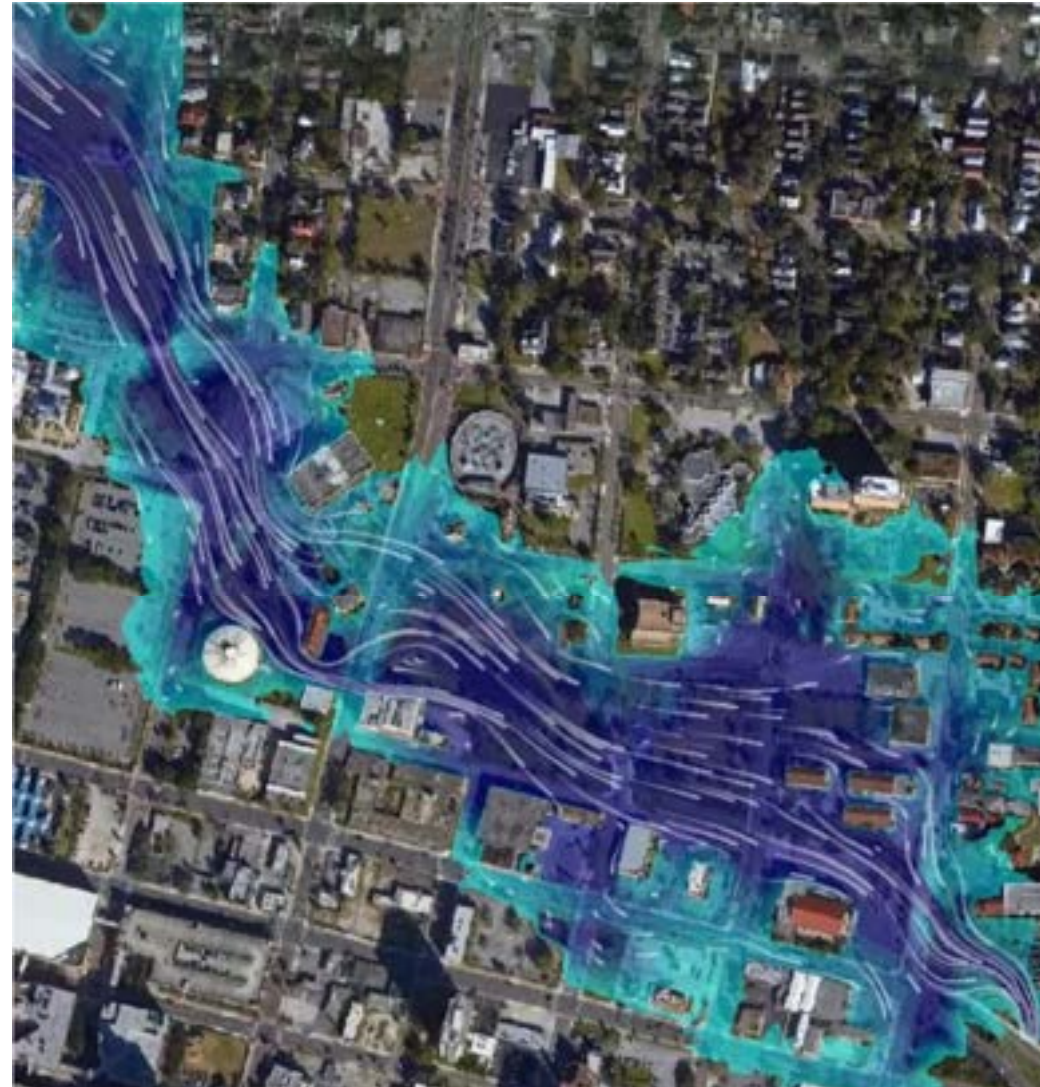
# What has changed?

- Better tools and data to aid engineering
- Watershed development
- Water pollution
- Lack of creek accessibility
- Aging infrastructure
- Sea level rise and changing rainfall patterns



# Flooding assessment

- Three major improvements:
  - Daylight creek at State St/ Washington St
  - Channel widening from Laura St to Main St
  - Creek channel widening
- Flood risk improvements
  - From Liberty St (~3 ft) to Broad St (0.5 ft)





# Flood Mitigation — Culvert removal



# Klutho Park Components (1/2)

- Parking lot only existing feature proposed for removal
- Propose shifting baseball field east to provide adequate room for outfield due to Creek expansion
- Request for additional passive open space free of flying objects
- Can safely modify the existing 18-basket disc golf course
  - Multiple lanes to a single basket
  - “Beginner 9” (shorter lanes) and an “Advanced 9” (regulation lanes)

# Klutho Park Components (2/2)

- Klutho Park
  - Really a larger community park: Schell + Klutho
  - What amenities should a community / regional park have, like restrooms?
  - Historically, the balustrades had light posts and fixtures, so what about lighting in new design?
  - Proposed design maintains a similar square footage of open space



# Road Closures & Parking (1/3)

- North Market Street closure
  - No impact on parking, but could provide parking space; however...
- ...Confederate and Phelps Streets
  - Reorganize for more efficient parking
- Orange Street modification
  - One way traffic + parallel parking
- Klutho Parking lot
  - Remove parking lot to create a unified corridor for activities

## Road Closures & Parking (2/3)

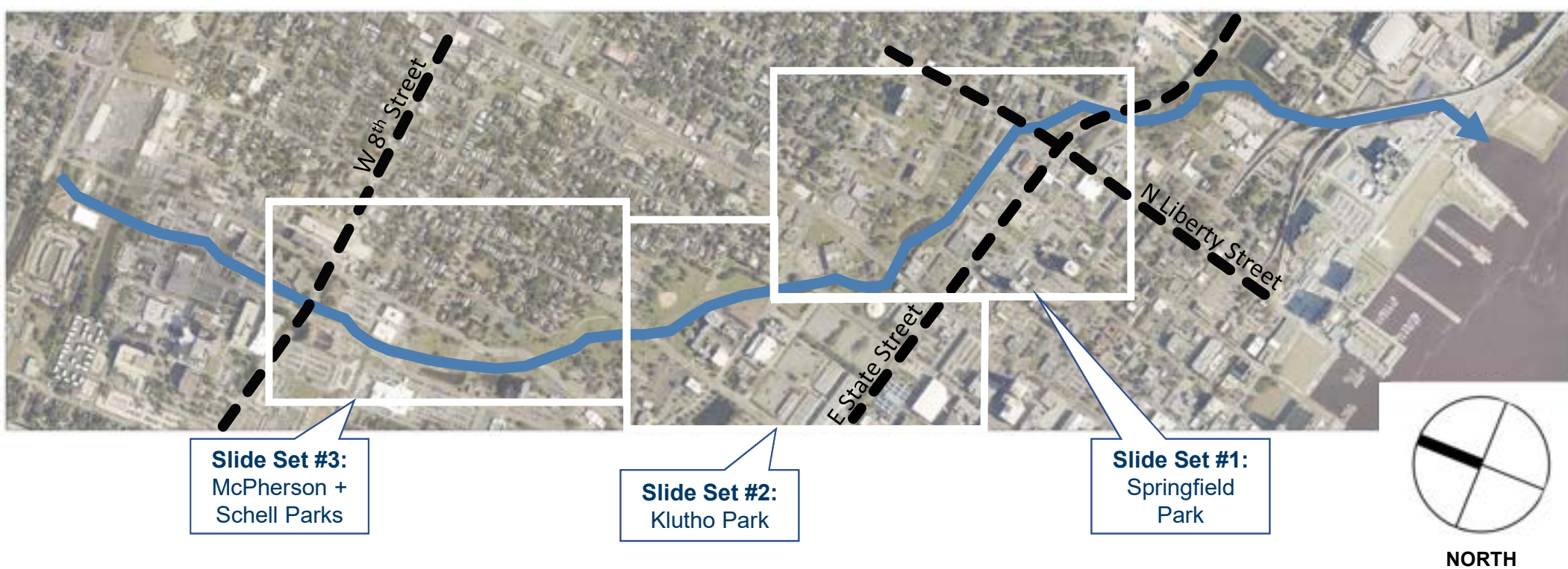
- Boulevard Street
  - Closing provides for expansion of park space
  - Modification could provide access and turnaround point with limited parking
  - Leave open but “diet” to one way traffic with parallel parking
- Close shortcut connecting North Pearl Street to West 4<sup>th</sup> Street
  - Provides a connection to landscape island and expands Klutho Park
  - No impact on parking, but could provide parking space
- Close west end of West 6<sup>th</sup> Street at North Jefferson Street
  - Decreases ability of VA users to park on grass

# Road Closures & Parking (3/3)

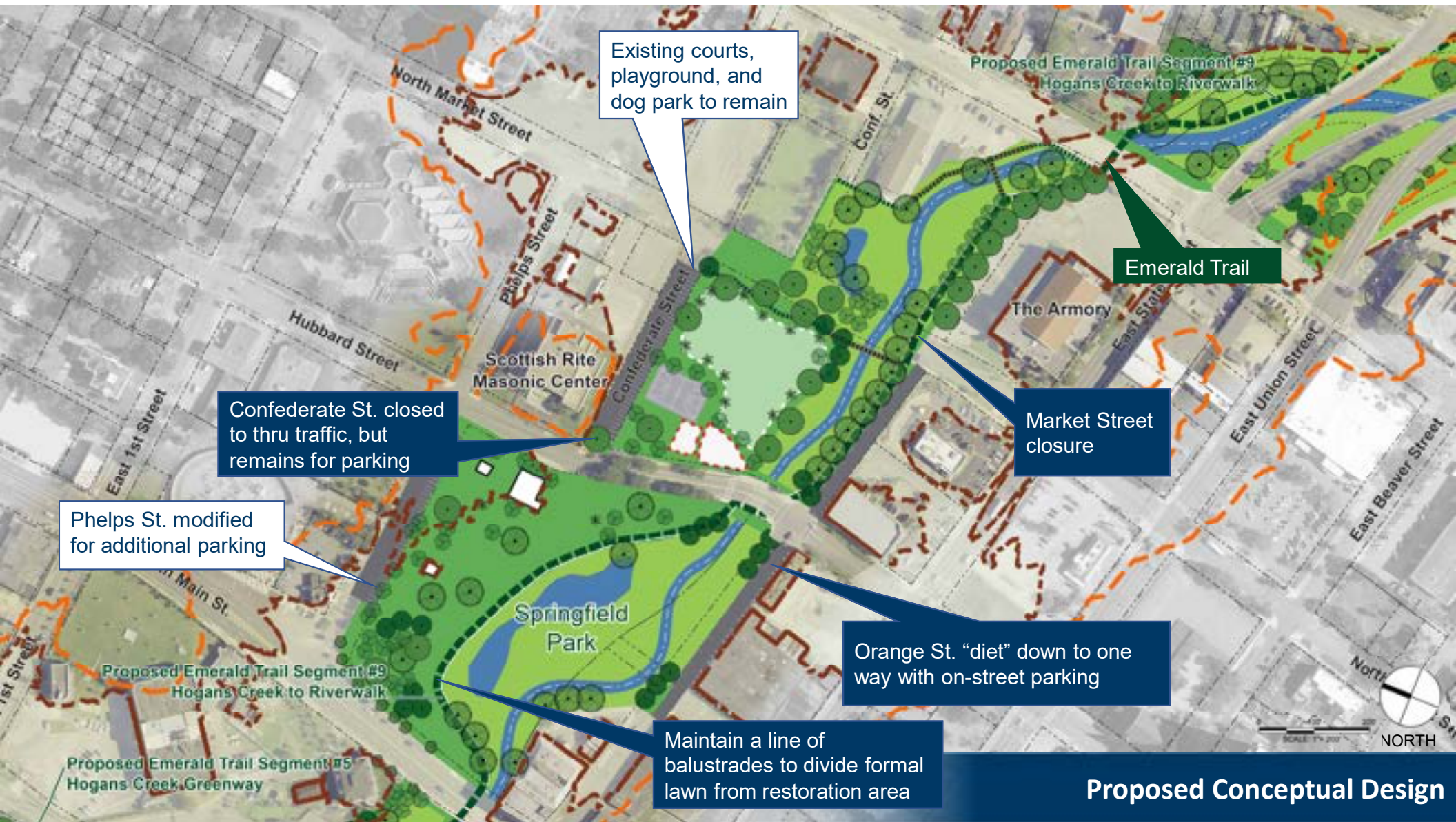
- Parking Questions to study:
  - Is there enough existing parking for today's needs?
  - Is there enough existing parking for tomorrow's needs?
  - Parking will continue to be evaluated and we will work to maintain similar parking quantities in the before and after conditions.



# Orientation: Geography







**Proposed Conceptual Design**





**Proposed Conceptual Design**



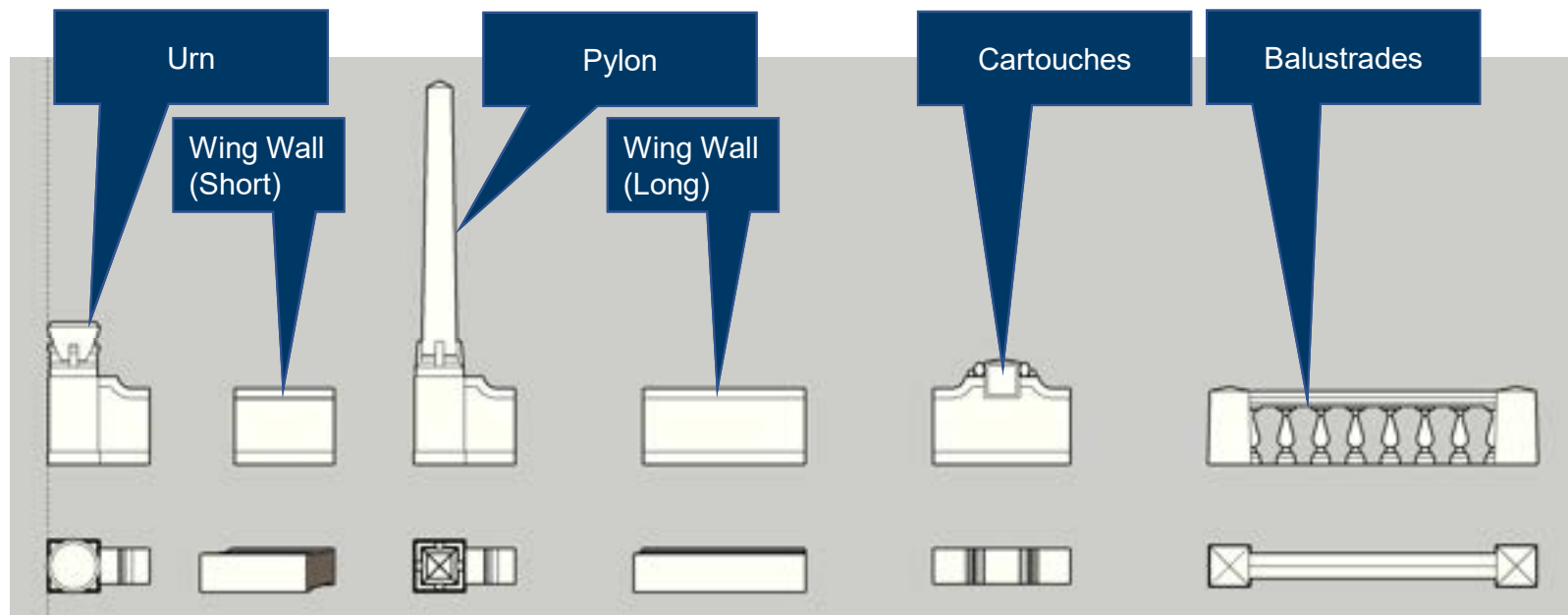


**Proposed Conceptual Design**

# Historical Elements

- We maintain a line of balustrades between the regularly maintained programmable park space and the more natural Creek.
- Klutho bridges and features retained and incorporated into modern designs
- Klutho pond recreated at North Pearl Steet and West 4<sup>th</sup> Street

# Restoration Vision: Klutho Features





# Balustrade Relocation Plan

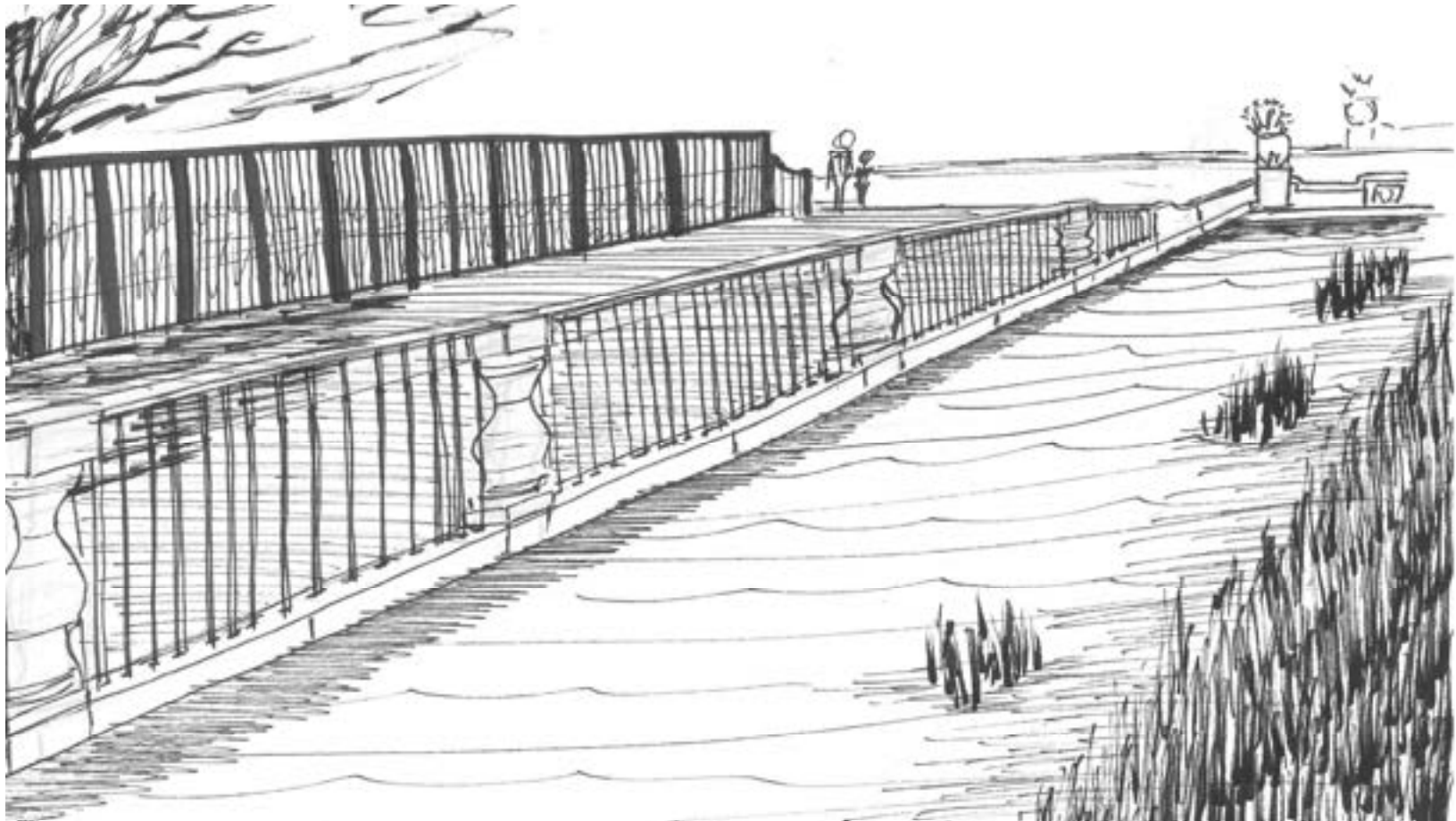
- Met with experts in the field
- Total Venetian-style balustrades: 4,576 ft (both sides; including broken segments)
- Total post-and-pipe rail balustrades: 2,064 ft (both sides; including broken segments)
- Plan to relocate them
  - Moving them is possible
  - Some sections may break due to deterioration
  - Need to perform a test to understand detailed plan



# Restoration Vision

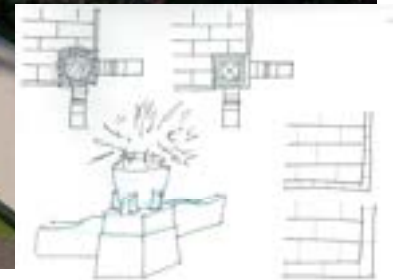
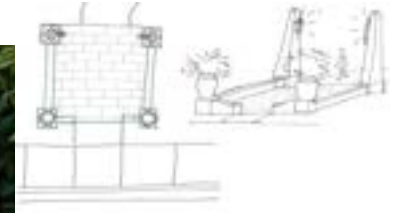
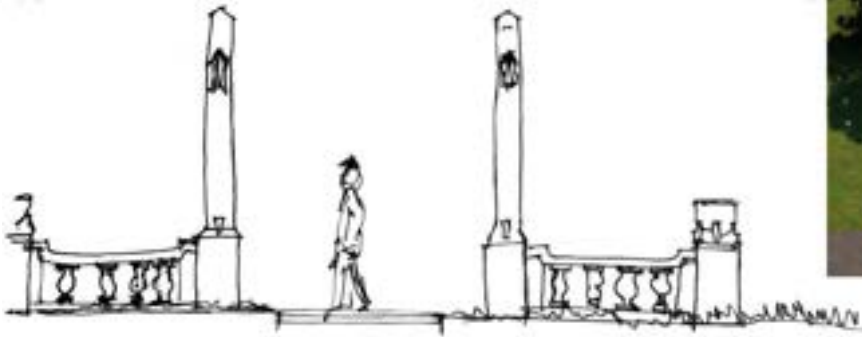


# Restoration Vision

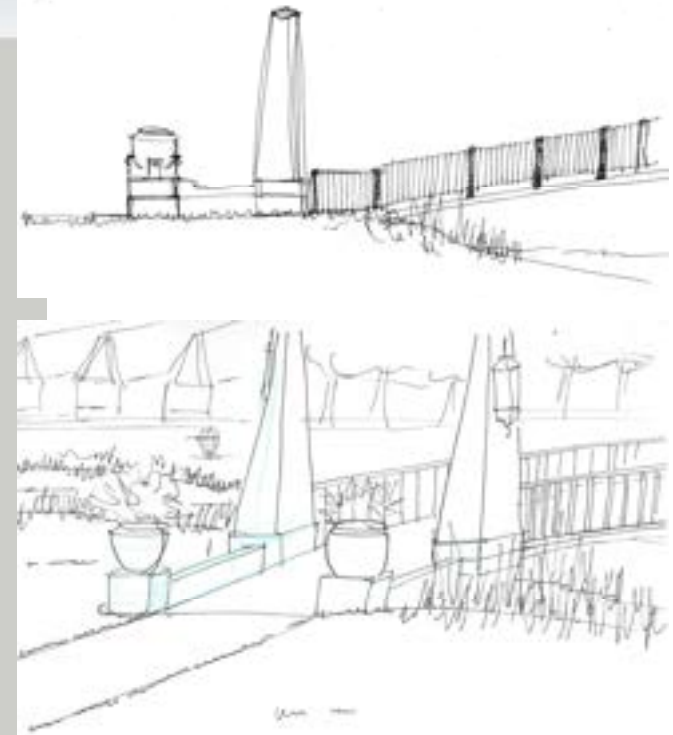
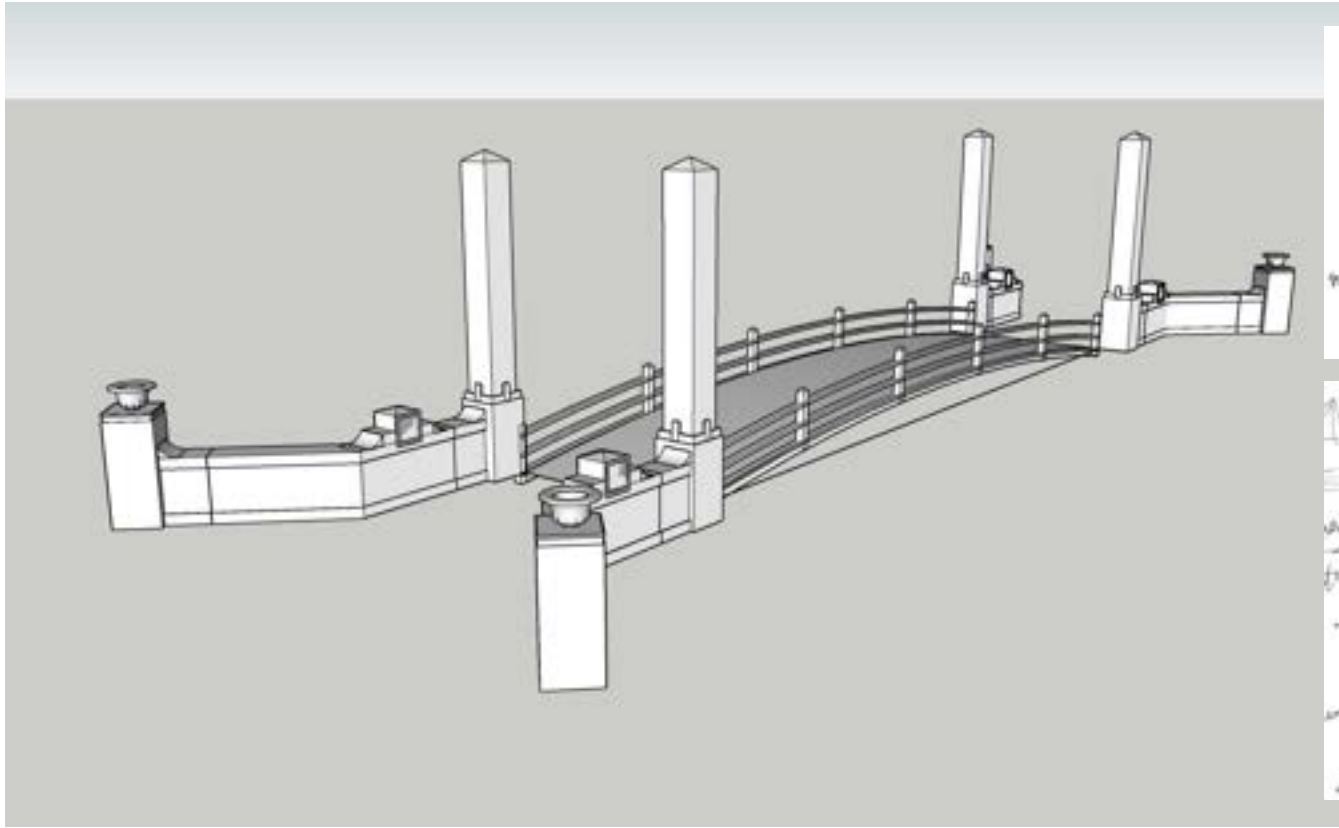




# Restoration Vision



# Restoration Vision

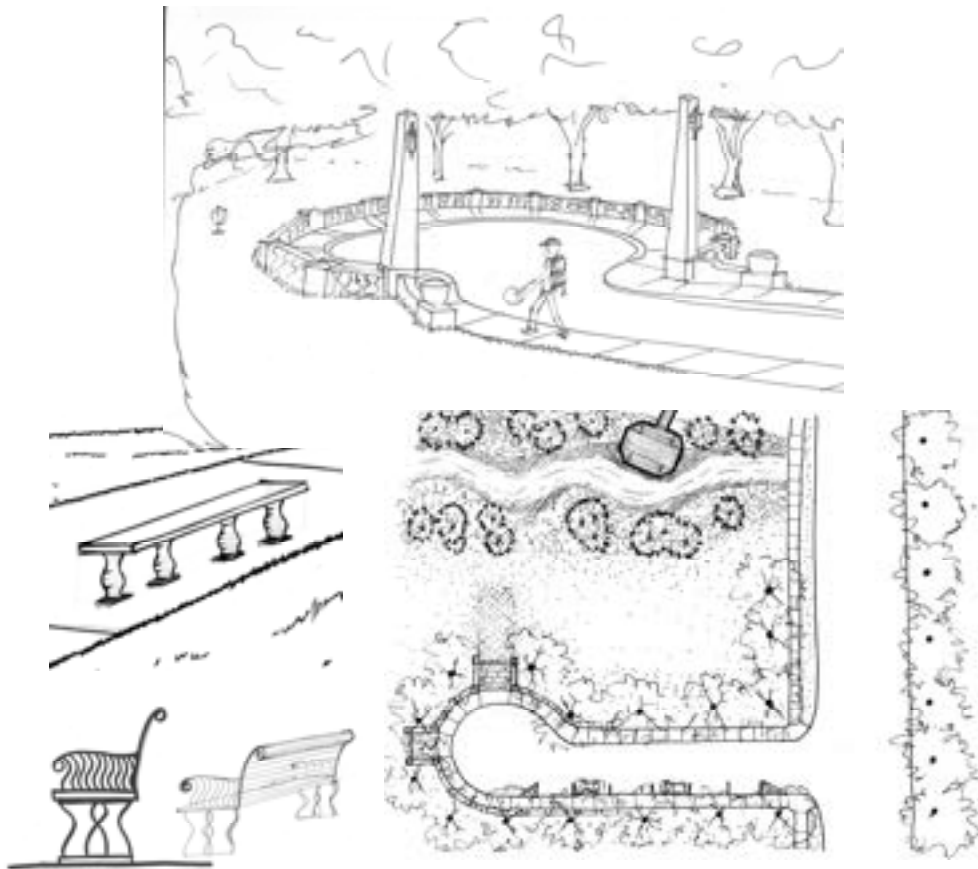


# Restoration Vision





# Restoration Vision





# Restoration Vision



# Next Steps

- Parking
  - Questions to study:
    - Is there enough existing parking for today's needs?
    - Is there enough existing parking for tomorrow's needs?
- Klutho Park
  - Really a larger community park: Schell + Klutho
  - What amenities should a community / regional park have, like restrooms?
  - Historically, the balustrades had light posts and fixtures, so what about lighting in follow-on plans?

# Questions and Answers

