

SYDNEY BASIN KOALA NETWORK

KOALAS IN LIVERPOOL - UPDATE

Gandangara and Tharawal Lands



Update based on [Progress Report](#) by SBKN, EDO, Biolink and TEC. March 2024

Koalas are classified as endangered in NSW. Our report does not indicate that the situation will change and is indeed likely to get worse.

Koalas in Liverpool

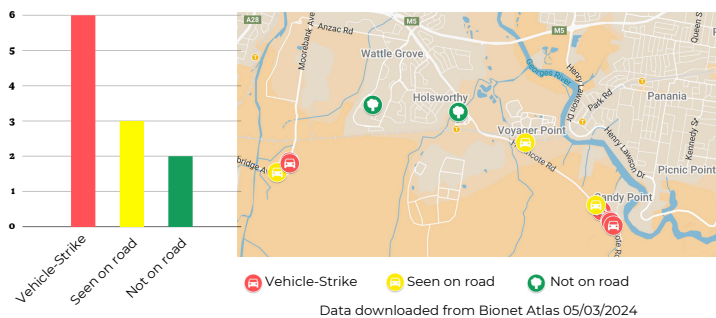
Koalas are concentrated in the East of Liverpool LGA. Long standing breeding populations are found here (1).

Since 2001, Liverpool has seen westward expansion of their Koala population as koalas have moved in from Campbelltown (2). However, **recent data shows no change in the range or area occupied by koalas in the Liverpool LGA between 2021 - 2023 (1), indicating koala expansion in Liverpool has slowed.**

Future in Jeopardy

Liverpool is seeing **surging koala vehicle strikes** (3). Six koala strikes have been reported since since July 2022. Rates this high are unsustainable and if sustained will likely drive the population into decline (4).

Liverpool Koala Sightings since July 2022



Vehicle strike **hotspots such as Heathcote Road, indicate the koala population here is not coping with existing development and traffic volume** (5). A grave concern for their future, considering we are already seeing a slow in population expansion.

Koalas are losing their homes and ending up on the roads. Last year, a koala was seen on a housing development site in Liverpool (6). **He was observed trying to climb trees in the middle of habitat that was being cleared and wandering around the road.** This heartbreaking story is the inevitable outcome when our laws do not protect habitat. It will continue, unless changes are made.

Local Advocacy

Thank you to local collaborators for their advocacy:

- [Sutherland Shire Environment Centre](#)
- [Oatley Flora and Fauna Conservation Society](#)

If your group would like to join the Network, please contact us: info@sydneybasinkoalanetwork.org.au



Poor implementation of road mitigation measures at Deadmans Creek

In July 2023, 4 koalas were killed in one month at a notorious stretch of Heathcote Road, called Deadman's Creek in Liverpool LGA. This winding stretch of road is dangerous not only to koalas but to motorists who brake and swerve at high speeds and for the wildlife rescuers who must stop in unsafe areas.

Transport NSW's lack of effective action on speed limits, inadequate implementation of fencing, and poorly designed underpasses has led to continued koala fatalities at Deadmans Creek. Poor coordination between Transport NSW and the Department of Defence has also impeded the ability for koalas to move freely through their habitat.

There's a pressing need for transparency and urgent engagement from Transport NSW to improve conditions at Deadmans Creek and stop cutting corners and revising expert advice. Best practice wildlife mitigation must be integrated into all new road infrastructure and upgrades as standard practice.

Koalas Need Connected Habitat

Roads fragment habitat and koalas need to cross them to access resources and find new mates. We must **prioritise effective wildlife road crossings to ensure safe connectivity** for koalas and other wildlife, as well as safer roads for people. **Development can also fragment habitat**, especially when each development is assessed individually - leaving **koala habitat vulnerable to cumulative impacts.**

At the LGA level, a **Comprehensive Koala Plan of Management (CKPoM) can safeguard against cumulative impacts and protect habitat connectivity.** CKPoMs can include landscape level habitat mapping, protection of corridors, and implementation of planning requirements to protect koalas. Surging vehicle strike rates and slowing koala expansion raises serious concern - urgent action is needed to protect Liverpool's Koalas.

Legal Reform Needed

1 Support the development of a Comprehensive Koala Plan of Management for Liverpool LGA.

2 Reform state laws to deliver certain protection and strong safeguards for koalas in all environmental, planning, forestry and land clearing legislation (1).

Distribution of Koalas in Liverpool

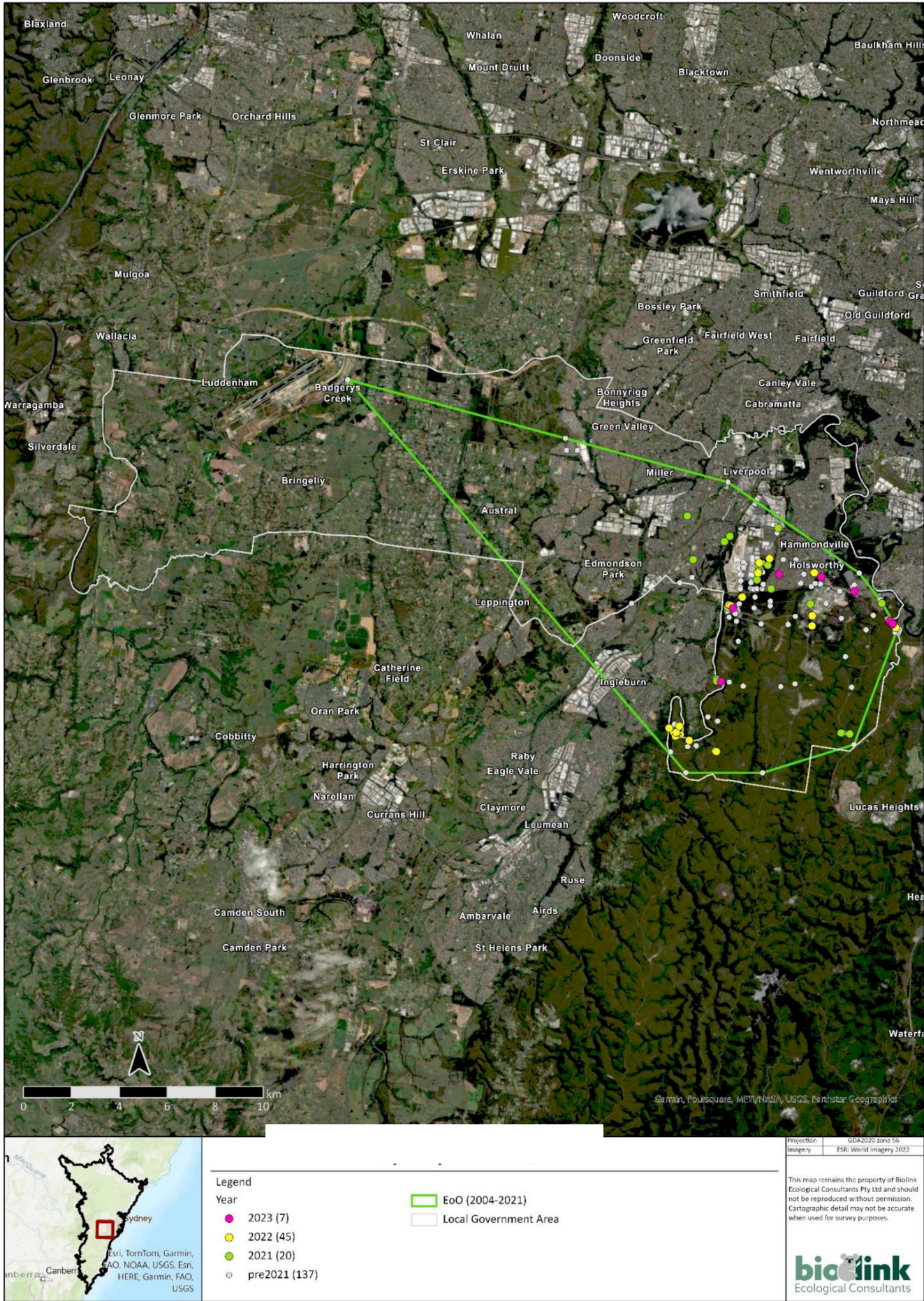


Photo Credit: Koalas, Bardens Creek, Sutherland LGA by Mel Clarke

References

(1) SBKN, EDO, Biolink, TEC, 2024: [State of Koalas in the Sydney Basin. First Annual Assessment](#), March 2024.

(2) Biolink. (2021). Business case for a koala / wildlife hospital and sanctuary in the Liverpool LGA. Report to Liverpool City Council. Biolink Ecological Consultants, Pottsville, NSW

(3) SW Sydney Koala Project - vehicle strike numbers collated from local wildlife carers

(4) Biolink, 2007 Conserving koalas in the Coomera-Pimpama Koala Habitat Area –a view to the future. Report to Gold Coast City Council. Biolink Ecological Consultants, Uki, NSW

(5) C. E. Dexter, J. Scott, A. R. F. Blacker, R. G. Appleby, D. H. Kerlin, D. N. Jones (2023) [Koalas in space and time: Lessons from 20 years of vehicle-strike trends and hot spots in SEQ](#)

(6) [BioNet Atlas](#)