



**Healthy Country Planning focuses on social, cultural and environmental values, building a pathway together and creating real opportunities.**

The HCP process follows a cycle of **simple steps** which guide the way.

**"we come together**  
sit down and decide  
how to make our people  
and country healthier"

**"we create jobs**  
that look after our country  
and give us a better  
future"



*Adaptive land + sea management with those who care about the future.*



## “The right people working together in the right way”

There are many benefits from developing and implementing HCP's

Some of these include:

- Community values and issues are clearly part of looking after country.
- Uses language that is clear and relevant.
- Is simple and easy to understand while looking at complex issues.
- Incorporates Aboriginal and non-Aboriginal understanding of values and issues side by side.
- Provides a clear connection between values, concerns and actions.
- Focuses on priorities which helps support clearer actions.
- Outputs can have a strong visual style which gives identity and ownership to the content.
- Forms a clear basis for funding, job programs, and operations.



The Healthy Country Process includes:

### Elders guide the way

Important people are involved  
Knowledge is transferred  
Appropriate areas are identified  
Protocols are established

### Community leaders assist with detailed planning

People who can walk and talk in both worlds are involved  
The right people are involved to sign off on decisions  
People committed to the project  
bring their skills and energy

### Return to Country visit

People can visit their country to see if it is healthy  
Opportunities to share knowledge about places  
Spending time with family  
Practicing cultural activities

### Working on Country

People connected to country are caring for it  
Access to country is done in the right way  
Important places can be protected

### Partners working with us in the right way

Cultural values are respected  
People can work together to achieve mutual outcomes  
Opportunities for two-way learning

### Skills

Healthy Country Plans provide great opportunities to learn  
in many ways

### Recording Information

Knowledge is recorded and protected for future generations  
Skills are learnt in the process  
We can see if things are improving over time

### Telling our story

Creative people can express themselves  
Helping others to learn from us

Conservation Management is proud to use Healthy Country Planning and the Open Standards.  
HCP was developed by many communities and people and we acknowledge all contributors past and present.  
HCP is not owned by any one organisation or person, and is licensed under the Creative Commons.  
You can access general HCP information here: <http://www.ccnetglobal.com>





- o cultural | environmental | social

The plan creates a well thought out **pathway** to improve the health of the country and the people who care for it.

The core HCP steps are: **define** | **plan** | **work and monitor** | **adapt** | **share**



These steps require **collective input** from: project team members, community and other specialists.

*Adaptive land + sea management with those who care about the future.*



## HCP Process steps

### Collective inputs

define

The **right people** to guide the way.  
Planning **timeline** and draft **budget**.  
**Map(s)** of project area.  
Identification of the **skills** required.  
Identify **project team**, & member roles.

plan

Social and geographical **scope** of the project.  
**Vision** for the project.  
**Targets** and why they were selected.  
Identification of key **threats**.  
**Maps** of targets and threats distribution.  
**Ranking** of the key threats.  
**Stakeholders** analysis.  
Conceptual model illustrating the relationships of **cause and effect** factors.  
**Goals** and **Strategies** and the steps needed to get them to work.

work  
monitor

**Identify actions and monitoring tasks.**  
Identify **indicators** for monitoring **to track the effectiveness** of each action.  
Identify **methods** and timeframes for collecting data for each indicator.  
**Working together** in the right way. **Allocating Assignments** for individual(s) and a realistic timeline.  
Initial project implementation **budget**.

adapt

Adopt a **review calendar** to track achievements over time - **analyses of your data**.  
Update viability and threat **assessments**.  
**Modifications** to your objectives, actions, work and monitoring plans.  
Develop appropriate **communication** tools for your key audience.

share ...

Telling **our story** – Use your communications tools – Digital and Print.  
**Partnership development** and promotion.  
Helping others to **learn from us**.  
Review effectiveness of communications.



Conservation Management is proud to use Healthy Country Planning and the Open Standards.  
HCP was developed by many communities and people and we acknowledge all contributors past and present.  
HCP is not owned by any one organisation or person, and is licensed under the Creative Commons.  
You can access general HCP information here: <http://www.ccnetglobal.com>





**Conservation Management specializes in working with Indigenous organisations, communities and their partners.**

**We can help with:**

- **Facilitation** and Advice
- **Capacity building** and skills development
- **Partnership** and broader community engagement
- **Strategic** and Business planning
- Access to **Funding Networks**
- **Healthy Country Planning** and Program Implementation
- **Ranger group** - Establishment, and Operational support
- Applying for **tenders and grants**
- **Recruitment** and other Human Resource management support
- **Health, Safety and Environment** (HSE/OHS) training, safety systems and field tools
- **Mentoring** for staff and managers
- **Mapping** and other GIS support
- **MERI** - Monitoring, Evaluation, Reporting and Improvement
- **Communications products** and Graphic design, posters, brochures, plans and films.



*Adaptive land + sea management with those who care about the future.*



Many minds and hands make light work when the communication is open, direction is agreed and people commit to sharing the actions – we can help to bring your collective aspirations together.

We can provide you with:

- On-ground **partnership** and project development
- **Network** development
  - industry alliance
  - indigenous ranger group cooperation
- **Collaboration** experience and tools
- **Grants** and **fundraising** support
- **Communications** products and Graphic design
- Workshop **facilitation**
- **Capacity** building
- **Backbone** support - Project and Relationship Management
- **Indigenous** and Community engagement
- **Governance** support, Strategic planning and Business development
- **Healthy Country** Planning
- **HSE** - Health, Safety and Environment training, safety management systems and products
- **Mentoring** for staff and managers
- **Specialized Training**
  - Miradi and Open Standards
- **Mapping** and other Geographic Information System (GIS) services
- **MERI** - Monitoring, Evaluation, Reporting and Improvement



*Adaptive land + sea management with those who care about the future.*





**We link people who are committed to investing in programs with people who are working to apply knowledge and energy into achieving social and environmental outcomes.**

Our approach is about whole of community involvement:

- improving livelihoods and health through education
- increasing capacity and creating meaningful jobs.

Working with multiple partners including government we work towards establishing programs with funding groups that can be carried into the future by respective agencies that have recognized the value of these investments.

## Our core services for you:

- **Advisory services** and **Workshop facilitation**
- **Indigenous** and **Community** engagement
- Collective and Demonstrated **Impact**
- **Healthy Country** Planning
- **Ranger group** - Establishment, Implementation and Operational support
- On-ground **partnership** and project development
- **Specialized Training**
  - Miradi and Open Standards
  - MERI - Monitoring, Evaluation, Reporting and Improvement
- **Network** development
  - industry alliance
  - indigenous ranger group cooperation
- **Collaboration** tools - Introductions and Program vetting
- **Communications** products and Graphic design - Print and Film



*Adaptive land + sea management with those who care about the future.*



Conservation Management help government agencies navigate long-term and large-scale environmental projects through the changing nature of political dynamics.

We link government with the right people:

- To get and share information, and
- See what is working on the ground.

Our expertise in planning, operations, monitoring and communications, assists government at many levels.

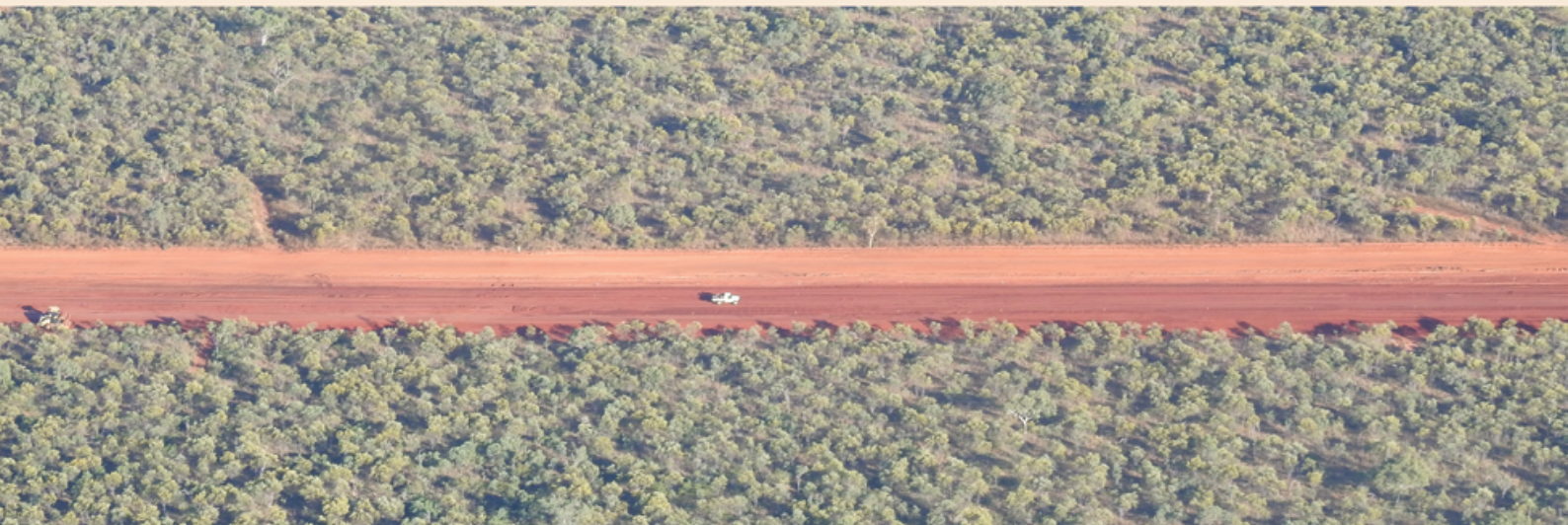
Federal and State Governments can benefit from:

- **Capacity Building**
  - Training and Mentoring
- **Strategic Planning and facilitation**
  - Indigenous Land Use Agreements (ILUA)
  - Joint and Co-management
- **MERI** – Monitor, Evaluation, Reporting and Improvement
- **Indigenous and Community** engagement
  - we have many **established relationships** nationally
- **Project implementation**
  - expertise and tools



*Adaptive land + sea management with those who care about the future.*





**We value the creativity and freedom with which your sectors work.**

**We connect people with shared visions and help them to implement dynamic projects.**

We strive to find the most effective, and efficient solution to each landscape challenge.

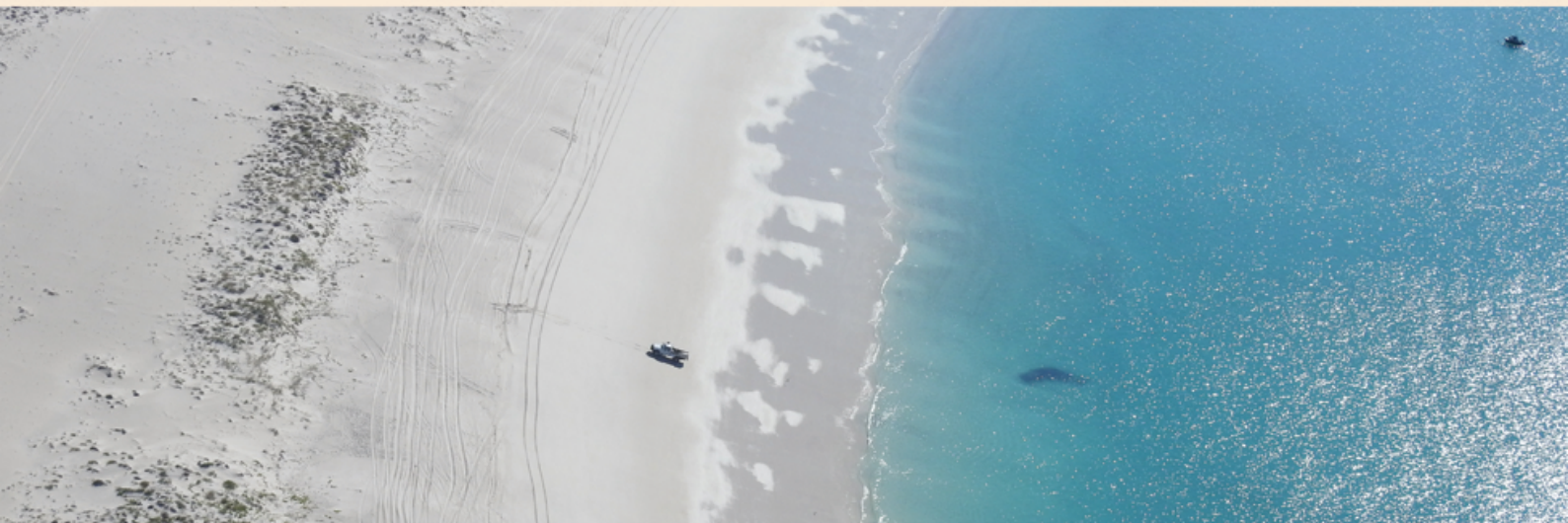
As a Social Enterprise, we contribute back into projects annually, enabling us to work as collaborators, while operating under a consulting model.

**Previous services employed by Non-Government and Not for Profit Groups include:**

- **Indigenous** engagement - Nationally
- Open Standards / **Healthy Country** Planning
- **Strategic** Planning
- **Connective** services - aligning partnerships
- **Collaboration** tools
  - partnership and project development
- **Communications** - Print and Film
- Program Evaluation and Advice - **Mentoring**
- **Operational** support
- **MERI** - Monitoring, Evaluation, Reporting and Improvement
  - Assessment and evaluation
- Access to **Funding Networks**
- **Feasibility** Studies
- **Social Surveys**



*Adaptive land + sea management with those who care about the future.*



**Conservation Management understands how people and changing environmental factors effect landscapes and biodiversity values.**

**We know how these can impact economic assets in agriculture, mining and tourism along with how our communities connect to the places they value.**

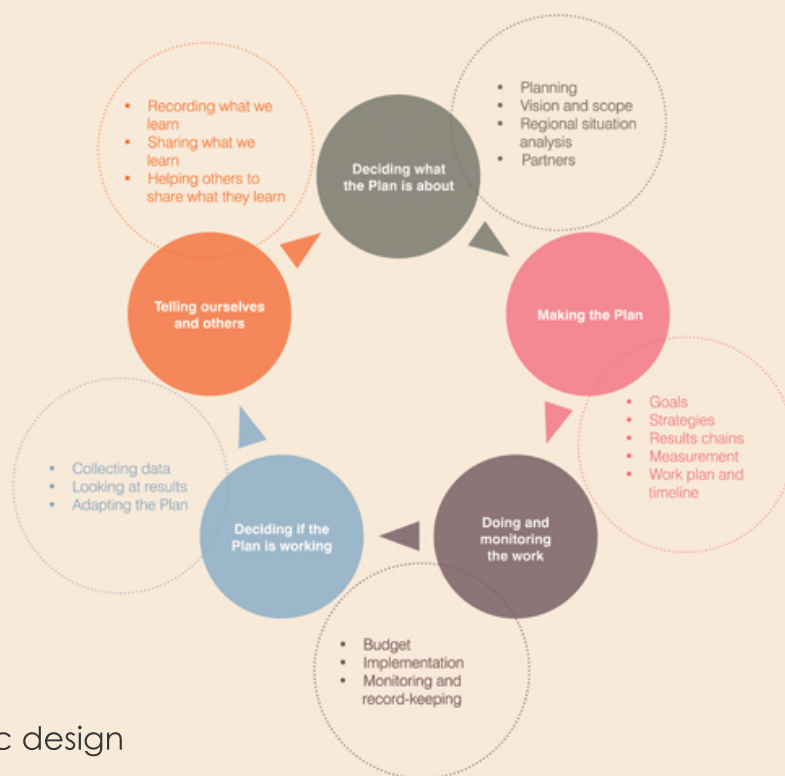
**We can help you with:**

- **planning,**
- **facilitation,**
- **communications, and**
- **management of complex partnership projects.**

As a social enterprise our mission is driven to make landscapes healthier, we strive to find the most effective, and efficient solution to each landscape challenge.

**Products we can support you with:**

- Collective and Demonstrated **Impact**
- **Collaboration** and **Partnership** Tools
- **MERI** - Monitoring, Evaluation, Reporting and Improvement - expertise
- **Strategic and Operational** Planning
- The **Open Standards** and supporting software (Miradi)
- **Specialized Training** and **Mentoring**
- **Facilitation** services
- **Communications** products and Graphic design
- Access to **Funding Networks**



*Adaptive land + sea management with those who care about the future.*





## Generating income from landscapes comes with unique challenges that require unique solutions.

As a Social Enterprise we are mission driven, while generating all revenue from trade. We understand the need for balance within operations, while sustaining effort over the long term.

### We can assist you with:

- **Program Evaluation and Advice**  
in relation to:
  - **Cultural and Physical Landscape** management
  - **Regulatory Reporting** and Assessments
- **Strategic and Business Planning**
- **Property planning**  
and implementation support
- **Partnership** design and development
- **Collaboration** tools - introductions
- **Indigenous**  
and **community** engagement
- Access to **Funding Networks**
- **Project management**
- **Mapping**  
and other Geographic Information System (GIS) services
- **Monitoring, Evaluation and Reporting**



*Adaptive land + sea management with those who care about the future.*



## Conservation Managements business growth comes from working with people and delivering positive outcomes.

**Our company is a registered Social Enterprise – we are committed to working in a way that feels right.**  
Our Social + Environmental Enterprise Purpose ensures we reinvest 70% of company profits into achieving our mission:

*"We help people to manage landscapes to be healthier by connecting, people, projects and places, using practical adaptive management and collaboration tools"*

### The right people working together in the right way:

We find solutions, establish pathways and implement actions that achieve meaningful outcomes for people and environments; locally and internationally. We use the Open Standards for the Practice of Conservation process which is applied successfully internationally. As adaptive project managers with extensive networks, we are aware of innovations and global trends. We apply these locally.

### We work with:



### We support you with:



Conservation Management is proud to use Healthy Country Planning and the Open Standards.  
HCP was developed by many communities and people and we acknowledge all contributors past and present.  
HCP is not owned by any one organisation or person, and is licensed under the Creative Commons.  
You can access general HCP information here: <http://www.ccnetglobal.com>