

TE TAURA WHIRI  
I TE REO MĀORI

MĀORI LANGUAGE COMMISSION



Te Tauāki Kawatau  
mō ngā Tutukinga

2022-  
2023

He Ara Whāia,  
He Ara Hou

Kei te Hōnore Willie Jackson, te Minita Whanaketanga  
Māori, Nei rā te mihi kau atu ki a koe.

He rekanga manawa e tāpaea atu nei Te Tauākī Kawatau  
mō ngā Tutukinga

a Te Taura Whiri i te Reo Māori mō te tau ka eke ā te  
30 o Pipiri 2023.



---

**Ahorangi Rawinia Higgins**

Toihau



---

**Charisma Rangipunga**

Toihau Tuarua

He mea tāpae e Te Taura Whiri i te Reo Māori ki te aroaro o te Whare Pāremata i runga  
i te whakahau a te wāhanga 149 o te Ture Hinonga Karauna 2004. I runga i tēnei Ture,  
he hinonga Karauna mana motuhake Te Taura Whiri i te Reo Māori. Ko te Ture mō te  
Reo Māori 2016 kei te āta tautohu i āna kawenga.



Manatārua © Karauna. He mea raihana te hanga manatārua nei i raro i te raihana o  
Aotearoa mō te Creative Commons Attribution 3.0. Me kī pēnei ake, e āhei ana koe te  
tārua, te tohatoha, te raweke kia iti nei i ngā tuhinga, engari me mātua whakaatu nā  
Te Taura Whiri i te Reo Māori ngā kōrero, me mātua ū anō ki ērā atu here o te raihana.  
Ko te whakaatu nā Te Taura Whiri i te Reo Māori, me tuhi ā-kupu rawa, kaua e tāruatia  
noatia ngā waitohu o Te Taura Whiri i te Reo Māori.

Hei tiroiro i tētahi taura o te raihana, haere ki [www.creativecommons.org/by/3.0/nz/](http://www.creativecommons.org/by/3.0/nz/).



# Ngā kōrero o roto

---

## 2 He kupu nā te Toihau

---

### 6 Ko wai mātou

- 6 Tā mātou kawenga
- 9 Tō mātou mana arataki
- 9 Tā mātou whakahaere
- 10 Tō mātou ahunga rautaki
- 10 Ō mātou uara matua
- 10 Te kawē tonu i ngā mahi i te ao o KOWHEORI
- 11 Te āhua o tā mātou ine i ngā tutukinga

---

## 12 Te arorau wawaotanga

---

### 14 Te tautoko i ngā kawenga a te kāwanatanga

---

## 17 Ō mātou takune me ngā tohuine tutukinga

- 18 Te whakapakari i te Maihi Karauna, hei tautoko i te whare o te reo Mauri Ora
- 20 Te whakapiki i te tokomaha puta noa i Aotearoa e wāriu ana i te reo Māori
- 22 Te waihanga me te whakatairanga rauemi hei tautoko i te whakamahere me te ako, me te whakamahi i te reo Māori
- 24 Te whakarite kia mau tonu te kounga o te reo Māori
- 26 Te hauora ā-whare me te kaha

---

## 27 Tā mātou pūtea me ngā tauākī pūtea

- 28 Tā matou pūtea mō te 2022/23
- 29 Te tauākī noho haepapa
- 30 Te tauākī matapae mō ngā whiwhinga, whakapaunga whānui
- 31 Te tauākī matapae mō te tūnga pūtea
- 32 Te tauākī matapae mō ngā nekeneke i te tūtanga
- 33 Te tauākī matapae mō te kapewhiti
- 34 Te tauākī kaupapa-here kaute
- 35 Te rūnātanga o ngā kaupapa-here kaute matua





## He kupu nā te Toihau

Kua tara-ā-whare te pare kawakawa ki ngā mate huhua o te wā. Kua huri ki te hunga ora ki aku nui, ki aku rahi, ki aku manu noho mātārae. Nau mai, tomo mai ki te Whare o te Reo Mauri Ora. Ehara tēnei i te whare puehu engari ia e pokea ana e te marea. Nō reira nei rā ngā mihi ki a koutou e ū tonu nei ki te kaupapa o tō tātou reo kāmehameha.

Nō te ono tau ka hori nei i whakaterea ai he kaupapa nō Aotearoa tūturu nei te hanga hei tāwharau atu anō mō te reo taketake o tēnei whenua. Koia tēnei ko te whakaaranga ake o Te Whare o te Reo Mauri Ora. Matika ana mātou ki te tātaki i ngā mahinga tahitanga ki te hāpai i te Maihi Karauna, te rautaki reo Māori a te Karauna i whakamanaia e te Ture mō te Reo Māori 2016. I konā ka arotahi mātou ki te whakatairanga, ki te whakaora ake i te reo Māori i te rāngai tūmatanui me te umaraha o Aotearoa, tae atu anō ki te rāngai tūmataiti. Tērā anō a Te Mātāwai kei tērā taha o te whare, he mea whakatū hei ārahi i te Maihi Māori. Me kore ake te whare nei hei whakapūmau i te mauri ora, i te mataora o te reo Māori. E titikaha ana mātou ki te tautoko i ngā uara me ngā whanonga i te porihanga e poipoia ai ngā rangatahi i pakeke mai ki te reo Māori, ērā taitamariki i whānau mai ki ngā mātua kua kite noa atu he taonga kāmehameha te reo, ahakoa anō te kore o ētahi o aua mātua e mōhio ki te kōrero Māori.

Mate atu, tū mai, mate atu, tū mai he reanga whawhai mō te reo – i ngā tāone ririki katoa, tutuki atu ki ngā tāone nunui katoa. Waihoki i te pouaka whakaata, i ō tātou kura, i ō tātou wāhi mahi, ā, mātua rā i ō tātou whānau. Engari e kore e eke i a tātou anahe. Me tautāwhi mai te whānuitanga atu o Aotearoa. Māringanui e tohu mai ana ā mātou patapatai arā te tokowaru o roto i ia tekau tāngata o Aotearoa kei te whakaae kē he tūtanga te reo Māori nō te tuakiri ā-motu.



E hia kē ngā eke  
kia whakanuia i te tau  
2022 mō te reo Māori



50

Kua 50 tau mai i te tāpaetanga o  
te petihana mō te reo Māori



35

Kua 35 tau mai i te  
whakamanatanga o te reo  
Māori e te ture



35

Kua 35 tau mai i te  
whakatuwheratanga o Te Taura  
Whiri i te Reo Māori



50

Kua 50 tau mai i te  
orokohanga ake o Te Matatini



40

Kua 40 tau mai i te huakanga o  
te kōhanga reo tuatahi



He maha hoki ngā reo  
irirangi ā-iwi he huritau e  
tika ana kia whakanuia e  
rātou i tēnei tau



Ā, ka tū anō te rā whakatā ā-motu tuatahi hei whakamānawa  
i a Matariki i te tau 2022 – he kaupapa tēnei kua 20 tau neke  
atu e kōkiritia ana e Te Taura Whiri i te Reo Māori.

Ahakoia te huhua o ngā huritau hei whakahihī mā tātou  
i tēnei tau, me āta kauneke tonu te kaupapa ka tika.  
He reanga kotahi noa, ka ngaro he reo; me toru rawa ia  
hei āta whakahoki mai: kua tīmata rā te tataunga.

*“Kua tawhiti kē tō haerenga mai, kia kore  
e haere tonu. He tino nui rawa ou mahi,  
kia kore e mahi tonu.”*

**Tā Hēmi Hēnare**

**Ahorangi Rawinia Higgins**

**Toihau**

Te Taura Whiri i te Reo Māori

30 o Pipiri 2022

Te Taura Whiri i te Reo Māori  
me Te Mātāwai, 2021





## ▶▶▶ Ko wai mātou

### ▶ Tā mātou kawenga

He mea whakatū Te Taura Whiri i te Reo Māori e Te Ture mō te Reo Māori 1987, ka whakatūmautia e Te Ture mō Te Reo Māori 2016. Kei te Wāhanga 40 o Te Ture mō te Reo Māori 2016 ngā kōrero whāiti mō ngā kawenga a Te Taura Whiri i te Reo Māori. Koia ēnei:

### ▶▶▶ A

Kia āta whāia ngā huarahi e tika ana hei whakaū i te mana o te reo Māori hei reo whai mana ā-ture nō Aotearoa

### ▶▶▶ B

He whakatairanga i te reo Māori –

- i. hei reo ora;
- ii. hei reo kōrerorero noa o ia rā

### ▶▶▶ C

He kōkiri i te rurukutanga o ngā mahi whakatinana i te rautaki Maihi Karauna

### ▶▶▶ D

He whiriwhiri, he whakatakoto pūrongo ki te aroaro o te Minita mō ngā take e pā ana ki te reo Māori

### ▶▶▶ E

He whakarite, he whakawhiwhi hoki i ngā tohu i runga anō i ngā whakahau a te Āpitianga 6 (Ngā tohu whakatau i te mōhio ki te reo Māori)

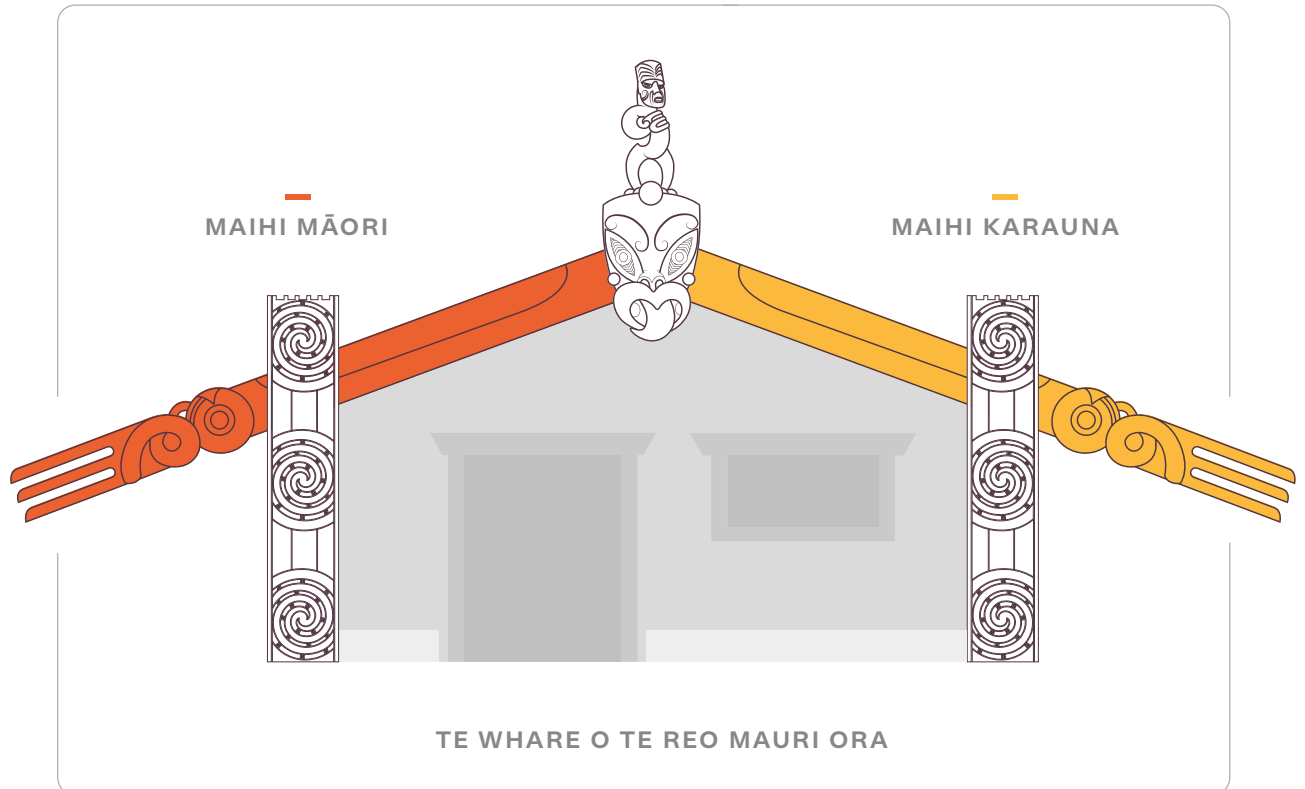
### ▶▶▶ F

He whakarite, he pupuri, me te whakaputa rēhitanga o te hunga kei te pupuri tiwhikete i raro i tēnei Ture, tae atu hoki ki te whakamanatanga o te tiwhikete.





Ko tētahi o ngā hua o Te Ture mō te Reo Māori 2016, ko te tū pātui a te Karauna, ngā iwi Māori me ngāi Māori whānui ki te whakaora i te reo. E whakaaetia ana ko ngā iwi Māori me ngāi Māori whānui ngā kaitiaki i te reo Māori; ko tā te Karauna, he kōkiri i ngā mahi whakaruora mā te whakatairanga atu i ētahi whāinga rautaki ki te umaraha o Aotearoa.



E whakaataria ana te pātuinga rā roto i Te Whare o te Reo Mauri Ora. Ko ngā maihi o te whare hei tohu i ngā hoa pātui e rua. Ka puta i tēnā, i tēnā he rautaki mō āna mahi whakaora ake i te reo Māori:

He kawenga whārahi tā te **Maihi Karauna**; e mātua whai ana kia matomato te oneone o te porihanga mai kore e ngaruru te tupu o te reo Māori, ā, kia tautokona hoki tēnei ki ōna anō pūnaha kāwanatanga e tika ana.

He kawenga whāiti tā te **Maihi Māori**; e mātua aro ana ki te whakahauoratanga ake o te reo Māori i ngā hapori me ngā whānau.

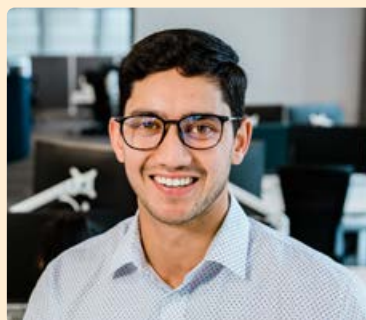
I te whakaaetanga o te rautaki Maihi Karauna (i te Hakihea 2019), ka whakaae anō te Kāhui Minita mā Te Taura Whiri i te Reo Māori e ruruku, e aroturuki te whakatinanatanga o te Maihi Karauna, māna anō hoki e taupua ngā mahi whakamahere reo.

# Kia māhorahora te reo



I tā mātou tū hei pūtahi tātaki i te Maihi Karauna, e aronui ana mātou ki te whakapakepake i te Karauna me ngāi Aotearoa whānui kia hou mai ki te whare, kia mahi ngātahi ai te katoa ki te whakaora ake i te reo mātāmua o tēnei whenua. E pūmau ana mātou ki tō mātou wawata ‘Kia māhorahora te reo, ki ngā wāhi katoa, ki ngā mahi katoa, ki ngā tāngata katoa, i ngā rā katoa.’

Ko tētahi anō arotahinga, kia hou mai te manuhiri ki te whare nei, me manaaki, me whakarato ki ngā mea e mātua hiahia ana rātou.



## Koia nei tā mātou kaupapa matua:

Ko te whakatinana i te tū o te reo Māori hei reo whaimana ā-ture.

Ko te whakatāiri i te reo Māori hei reo māori noa, hei reo mataora.

Ko te tātaki i ngā mahinga tahitanga ki te whakatinana i Te Maihi Karauna.



► **Tō mātou  
mana arataki**

Koia enei, ko ngā  
kaiwhiri tokorima:



**Ahorangi Rawinia Higgins**  
Toihau



**Charisma Rangipunga**  
Toihau Tuarua



**Wayne Panapa**  
Kaiwhiri



**Tākuta Jeremy Tātere MacLeod**  
Kaiwhiri



**Bayden Barber**  
Kaiwhiri

► **Tā mātou  
whakahaere**

He mea wehewehe  
ā mātou kawenga  
ki ēnei tokomatua e  
whai ake nei:

**Te Hāpai Ō**

**Ngā Ratonga Rangatōpū**  
Ngā Whakahaere Ahumoni,  
Te Tiaki i te Puna Tangata,  
Te Tautoko i te Whakahaere



**Te Toko Reo**

**Ngā Pātuinga me ngā Mahi  
Whakatairanga**  
Ngā Whakapāpātanga,  
Te Whakahaere Kaupapa Nui,  
Ngā Mahi Whakatairanga

**Te Amo**

**Ngā Kaupapa-here me ngā  
Mahi Whakawhanake**  
Te Rangahau me te Arotake,  
Ngā Ratonga Reo Māori, me te  
Tuku Whakaaro Kaupapa-here

**Te Hiringa**

**Te Whakamahere Reo Māori**  
Ngā Taumatua Whakamahere Reo

## ► Tō mātou ahunga rautaki

Ko tā mātou whāinga pokapū ā ngā tau e whā e tū mai nei, kia mārama mai a ngāi Aotearoa ki ngā hua nui o te reo Māori, me te whakamanawa i a rātou ki te ako, ki te kōrero i te reo Māori. Ina ngaringari ake ngā tāngata o Aotearoa e māia ana, e matatau ana ki te kōrero Māori, kia pakari ake te tuakiri ā-motu me te piri tahi o te porihanga, e puta ai he painga ki te katoa.

Ko Te Whare o Te Reo Mauri Ora e whakaata ana i te tū tahi o ngā hoa pātui e rua, o ngāi Māori me te Karauna, ki te whakaora ake i te reo taketake o te motu e noho mōrearea tonu nei.

Ahakoā ngā mahi whakahirahira kua tutuki i te 35 tau ā mohoa noa nei, kei te āhua pātata tonu ki te korokoro o te parata. Me tae ki te 1 miriona ngā kaikōrero matatau ki te reo ā te tau 2040 e noho takuhe ai te reo. Mai anō kua ngita tā mātou aronui ki te kukume i ngā whakaaro o ērā rōpū whai pānga nui mā rātou rawa e tutuki ai tēnei wawata.

Kua whakarūnātia ō mātou takune rautaki tūwaenga i te wāhanga mō te arotau o ā mātou mahi, ā, kei te Tauākī Whakamaunga Atu 2020–2024 te roanga atu o ōna taipitopito.

## ► Ō mātou uara matua

I te wā e hoea ana ngā whāinga rautaki, kāore e wareware i a mātou ō mātou uara matua, inā koa:

### › **Whaitaketanga:**

Ka matapoporetia ngā kawenga a Te Taura Whiri i te Reo Māori, e te rāngai reo Māori, e ngā pūtahi kawanatanga, otirā e Aotearoa nui tonu.

### › **Mana**

Kawea ai e Te Taura Whiri i te Reo Māori āna mahi me te whai kia pai ōna rongo me ōna hononga ki te rāngai reo Māori, ki ngā pūtahi kawanatanga me te umaraha o Aotearoa.

### › **Kairangi**

Ka oke Te Taura Whiri i te Reo Māori kia ekea e ia ōna anō taumata tiketike mō te wāhi ki ana tutukinga me te kawenga o āna ratonga.

## ► Te kawē tonu i ngā mahi i te ao o KOWHEORI

I ngā werowero a Kowheori-19, kua raungāwari ake ā mātou ritenga mahi, kia takatū tonu ai mātou i te ao hurihuri hou nei. E tūhonohono tonu ana mātou, ā, e arotahi tonu ana ki te whakatutuki i tā mātou kaupapa, ahakoā kei hea ake tēnā me tēnā e mahi ana. Kua tōmua tā mātou aro atu ki te urutā – kua mahi ki te matapae he aha kei kō tata atu, kua takoto he urupare ki taua tūāhua, kua raungāwari anō te hāpai ake i te urupare. Kua piki, heke i ngā pae ohiti, he wā anō kei te tari, he wā anō kei te kāinga e mahi ana – ko te mea e tika ana i mea wā, i mea wā.

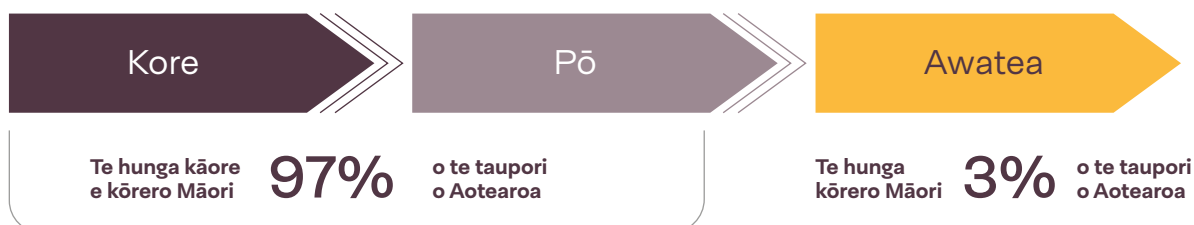
Mai i te wiki tuatahi o te aukati Pae 4 o te Poutūterangi 2020, kua tautoko atu mātou i te urupare a ngā lwi me te Kāwanatanga Katoa ki a KOWHEORI, mā te tāpae kupu ārahi mō ngā whakamāoritanga me ngā whakapāpātanga. Kua tahuri mātou ki ētahi atu rongoā tuihono, hei tauira, ko ngā Whakamātautau Tohu Taumata (LFE), ko ngā whakangungu mō Te Toi Reo Māori, me te huri ki te kawē tuihono i ngā mahi mā Topa rāua ko Teams.

## ► Te āhua o tā mātou ine i ngā tutukinga

Mō te nuīnga o ā mātou kawenga, he tautāwhi kē te aronga, ehara kau ana ko te āta kawē ake i ngā mahi whakarauora reo. Nō reira, ko ngā tutukinga, e aro kē ana ki te tautohu, te urupare me te whakatutuki i ngā hiahia me te whai anō kia iti ngā whakapaunga, kia nui ngā hua. Mā te tono kia whakahoki kōrero mai ngā pūtahi, ngā whakahaere me ngā tāngata takitahi e whakamahi ana i ā mātou taputapu me ā mātou kupu ārahi, ka taea e mātou te ine te kaha o te toro (te tokomaha e nanao ana i ēnei momo āwhina) me te pānga (e pēhea rawa ana te whaihua o ngā taputapu/tautāwhi i roto i ā rātou mahi whakaora reo).

I ngā wāhi ko mātou tonu kei te kawē ake i ngā mahi (pēnei i te waihanganga kupu hou, i te whakamana kaiwhakamaori, me te āta tautoko i ētahi kaupapa reo nui), me ine tonu te kaha o te toro (te maha o ngā hanga, o ngā tāngata whai wāhi mai rānei), me te pānga (ngā koninga whaka-te-ao-mārama e hua ake ana i ngā kaupapa whakarauora reo – kei raro nei ngā whakamahuki).

### TE ARA KŌRERO MĀORI: TE ARA KoPA – HIGGINS & REWI



E miramira ana te Ara KoPA<sup>3</sup> i te wāhi ki te nekeneke whaka-te-ao-mārama o te tangata – mai i te Kore ki te Pō, mai i te Pō ki te Awatea – hei whakapiki ake i te mana o te reo i te porihanga. Mā te mahi kia nuku te tangata mai i te Kore ki te Pō, ka mārama ake pea a ia, ka tautoko ake anō hoki i te kaupapa whānui o te whakaora reo. Hei reira ka māmā ake tana nuku mai i te Pō ki te Awatea.

Ka haere tonu tā mātou whakamātau, whakawhanake i tā mātou taputapu hou mō te ine i te neke whaka-te-ao-mārama (a KoPA) ā te 2022/23, hei ara ine i te pānga o ā mātou mahi. Ka pātui atu anō hoki ki ētahi atu pūtahi o te rāngai reo Māori ki te whakapai ake i ētahi atu taputapu ine kua hāpainga, ko te aronga nui, ko te ine i ngā koninga whaka-te-ao-mārama i tēnā, i tēnā rōpū whai pānga mai, otirā i te tōpūtanga anō o ngā pūtahi nei.

3. Higgins, R. & Rewi, P., *Indigenous Languages within the Entity*, he kōrero i tukuna ki te Language, Education and Diversity Conference, i Waipapa Taumata Rau, i te Pipiri 2011. (Zero – Passive – Active / Kore – Pō – Awatea)



# Te arorau o ā mātou mahi 2020–24

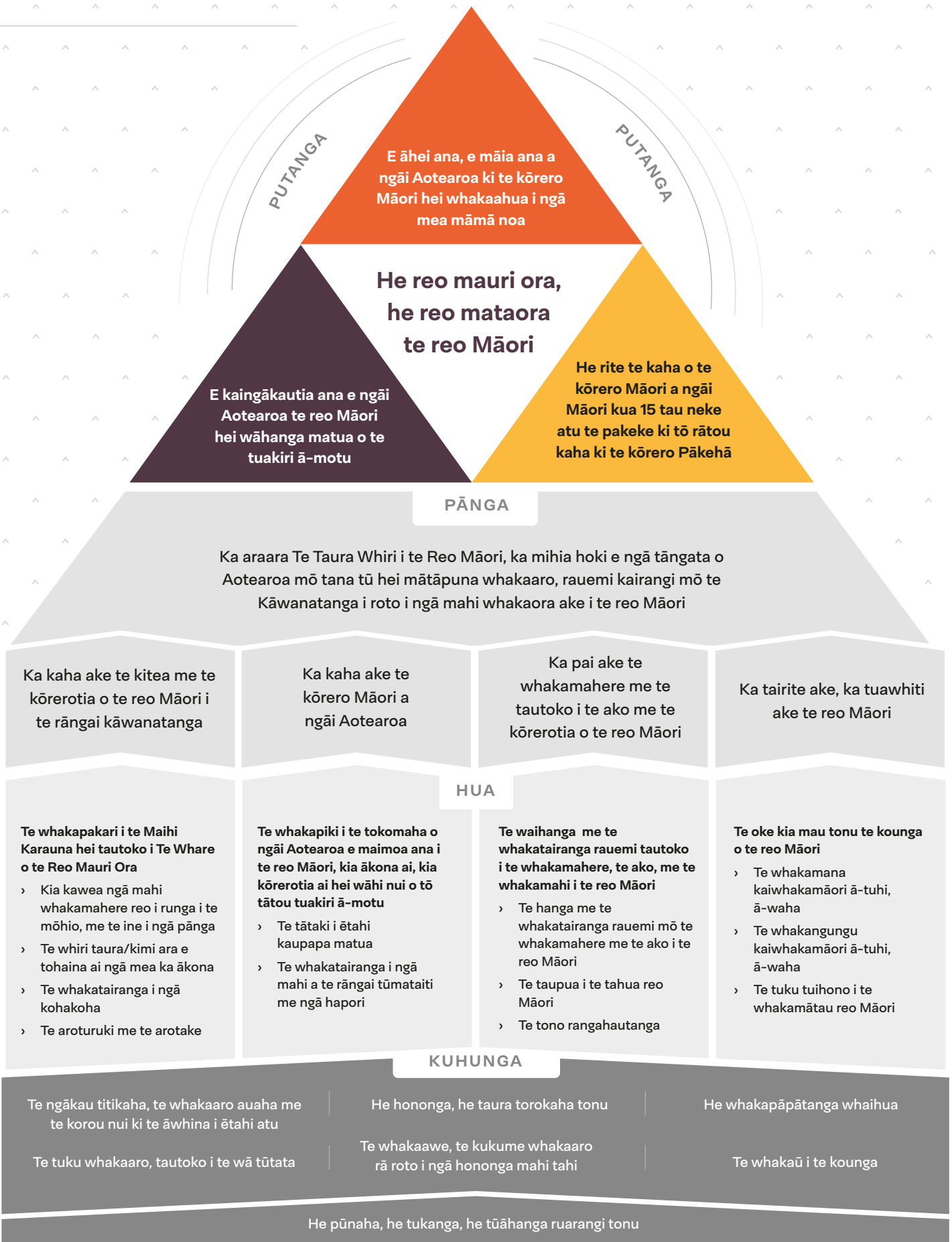
Awe Iti Ake



TE AWE O TE TAURA WHIRI I TE REO MĀORI

Awe Nui Ake

I ahu mai i ngā Whāinga o te Maihi Karauna



## Te tautoko i ngā kawenga a te kāwanatanga

### ► Te whakapai ake i te noho ora o mātāpuputu heke iho ki a mātātahi

E arotahi ana Te Taura Whiri i te Reo Māori kia puta he painga nui i āna mahi ki te whaiora tuku iho o ngāi Aotearoa – kia rongorātou i te āhuareka, te whaihua, te tautika me te whai tikanga i tā rātou noho tahi ki te ao. Hei whakaatu i te hononga o te reo Māori ki te noho ora o te tangata, me tiki atu he anga kaupapa Māori torowhārahi, pērā i te tauira hukihuki kua tāraia e te Awheawhe Tāke Māori – ko He Ara Waiora te ingoa.<sup>2</sup>



Kia māhorahora te reo – i ngā rā katoa, i ngā kawenga katoa, i ngā wāhi katoa, i ngā tāngata katoa.

He painga tō te reo mō te hauora. He whakamana tāna i te hapū, i te iwi, i a ngāi Māori whānui. He āwhina tāna i te ao tauhokohoko, he tuitui anō tāna i te motu.

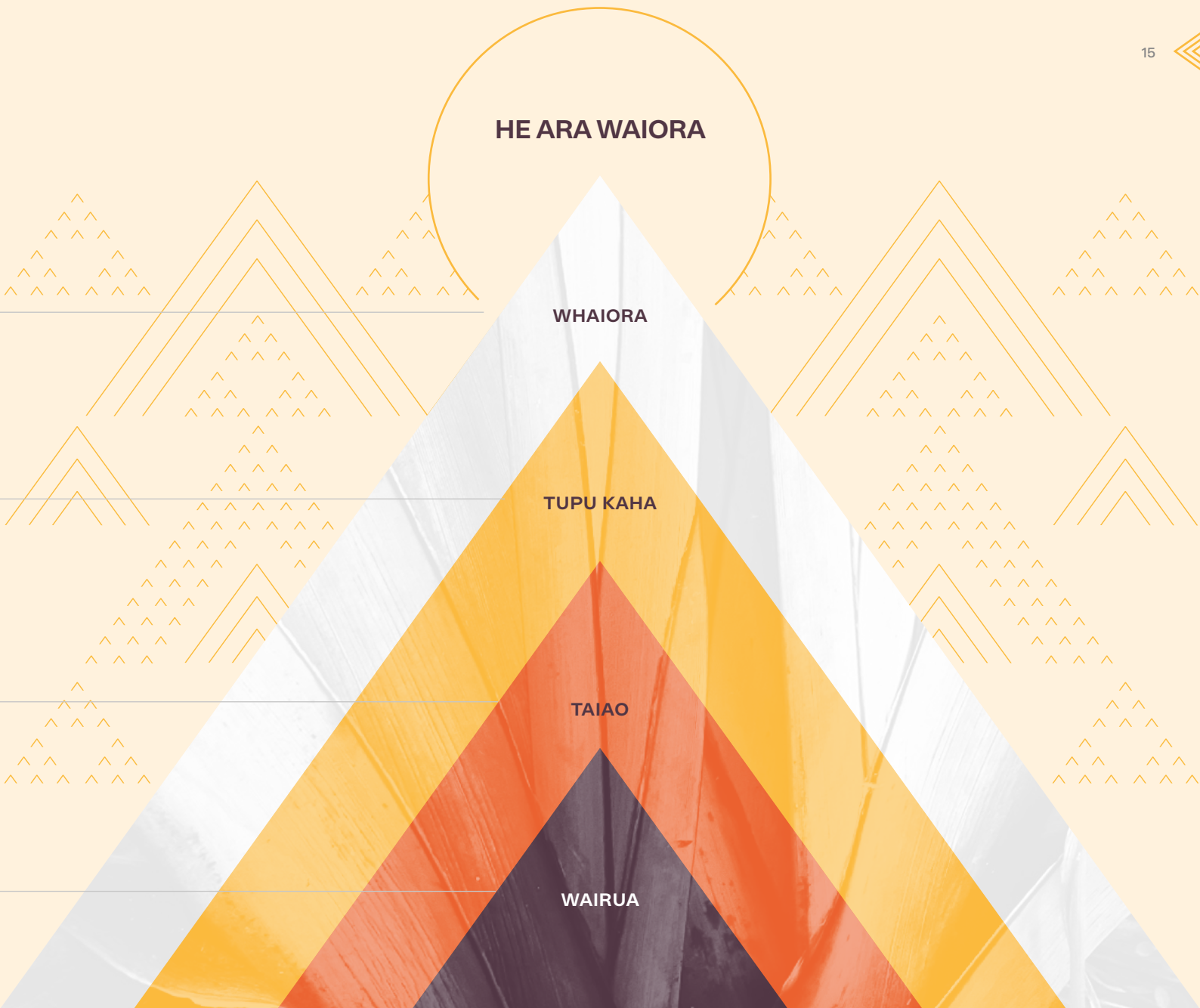
Nā te taiao i tārai te reo me te mātauranga Māori. Mā ēnei hanga e rua e kōrero ai te taiao, e tupu anō ai tō tātou mārama, tā tātou poipoi me tā tātou tiaki i te taiao, ā, i a tātou anō.

Ko te reo te iho o te Māoritanga. Ko te reo te mea e tūhono ana i ngā tāngata o Aotearoa ki te whenua nei. Koia tō tātou ahureitanga, koia tonu tātou.



2. O'Connell, E et al. Discussion Paper: *He Ara Waiora/A Pathway Towards Wellbeing* (DP 18/11), Mahuru 2018.





## TE ARA KI ANGITU

### Te Hononga

Mā roto i te Maihi Karauna, kua whakahaua e te Kāwanatanga te Rāngai Tūmatanui kia mahi tahi ki a rātou anō, ki a ngāi Māori hoki, ki te whakaora ake i te reo Māori.

### Te Tika

Ko Te Whare o te Reo Mauri Ora te tohu o te tū ngātahi a te Karauna me ngāi Māori ki te whakaora ake i te reo Māori.

### Te Manaakitanga

He tuitui tāngata tā te reo, he maimoa, he whakamana tāngata. He tūranga waewae, he puna ahurea mō ngā tāngata katoa o Aotearoa.

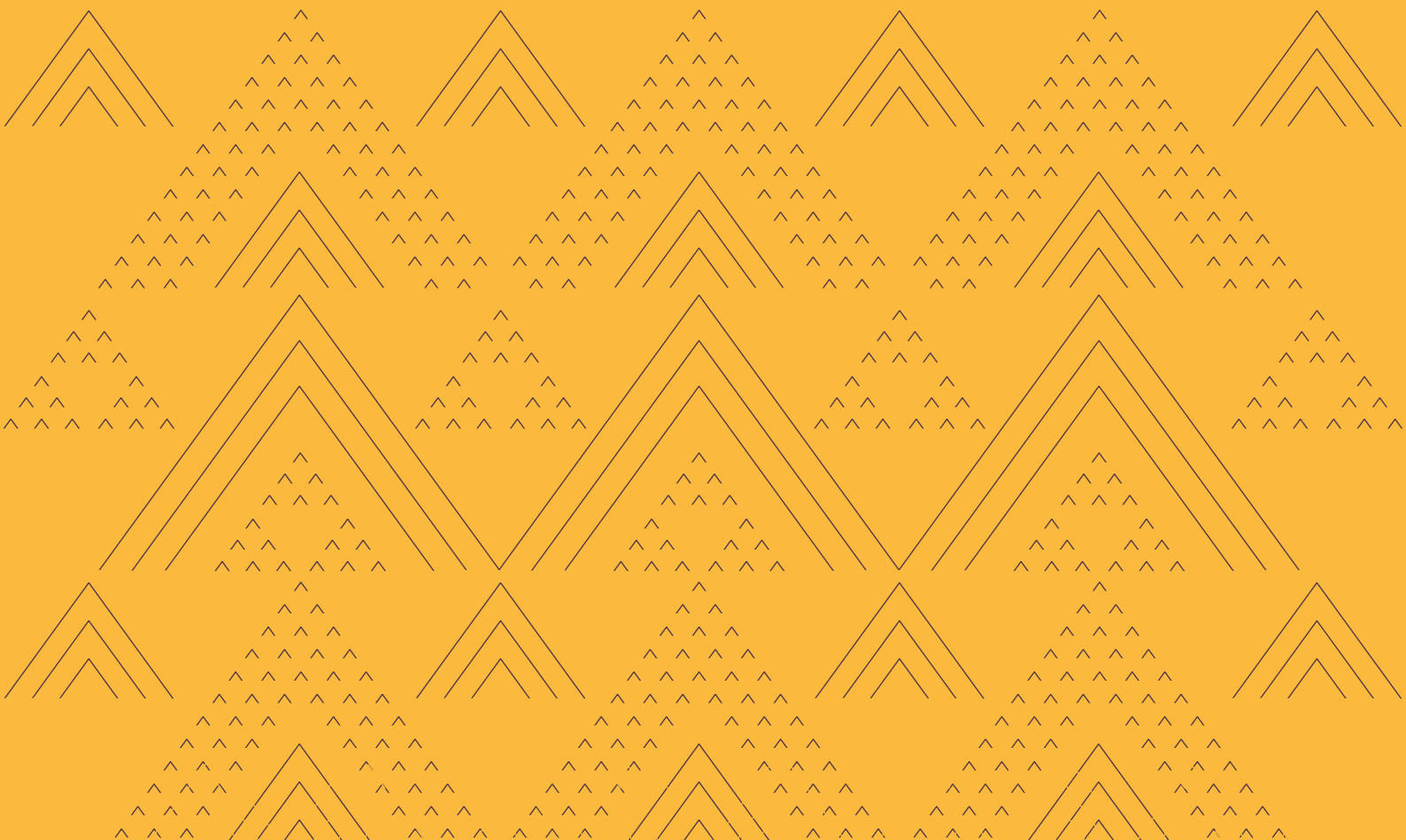
### Te Kaitiakitanga

Kua tohutohu te Kāwanatanga, mā Te Taura Whiri i te Reo Māori e tātaki ngā mahi ruruku, whakatinana i te Maihi Karauna.





# Ō mātou takune me ngā tohuine tutukinga



## 01

## Te whakapakari i te Maihi Karauna hei tautoko i te Whare o te Reo Mauri Ora

### ► He aha i kīia ai he mea nui tēnei?

Mā roto i te Maihi Karauna, e mahi ana mātou kia ruarangi te koha a te Karauna ki te whakaoranga o te reo Māori, e pakari ai te tū mai o Te Whare o te Reo Mauri Ora. I te Rohenga Pūtea 2021, ka tae mai he tahua tāpiri mō te ruruku me te aroturuki i te whakatinanatanga o te Maihi Karauna, tae atu ki te takinga o te amo e tautoko ana i te Maihi Karauna. Nā konei, he maha ngā arotakenga hōtaka kua tukua kia rere. Ka oti ēnei i mua i te paunga o Pipiri 2023.

Hei tēnei tau ka tukua ā mātou tautoko ki tua o ngā pūtahi ratonga tūmatanui matua (e 35) kua whai mahere reo kē. Ka horapa ki te whānuitanga atu o te rāngai kāwanatanga (ki ngā pūtahi āhua 200 nei<sup>3</sup>) me ngā whakahaere rāngai tūmataiti. Nō tērā tau i whakarewahia ai a Pae Mahere, he taputapu whakamahere reo tuihono hei āwhina i ngā pūtahi ki te tārai i ā rātou ake mahere reo, hei pae kōrero hoki e whakawhiti whakaaro tahi ai te hunga hāpai i te taputapu nei.

Nō te 2021/22 i puta ai ngā hua o tētahi Kaupapa Pūtahi Kōtui e kawea ana e Te Taura Whiri i te Reo Māori rāua ko Te Kawa Mataaho (PSC). Ko te tukunga tuatahitanga tēnā o Te Taunaki Public Service Census Data. Ko te wā tuatahi hoki tēnei i patapataingia ai ngā tari Ratonga Tūmatanui me ngā whakahaere tari katoa. E 40,000 ngā kaimahi ratonga tūmatanui i whai wāhi mai. I te patapatainga nei he nui ake i te 70% i mea mai he taonga ki a rātou tō rātou mōhio ki te reo Māori, me tō rātou hiahia whakatupu anō i taua mōhioatanga. He tokomaha anō (e 65%) i tohu mai e whakatenatenatia ana ngā kaimahi i ō rātou

wāhi mahi kia whakamahi i te reo Māori. He mea taunaki hoki te whakapakari i te mōhio ki te reo Māori e ngā whāinga ariari a te pūtahi (e 60%), e ngā tāngata hoki e whakatauiria ana i te kōrero Māori, inā hoki tētahi 67% i mea mai kei te rongo rātou i ngā kaihautū i ō rātou wāhi mahi e kōrero auau ana i te reo Māori. He tata ki te 60% o ngā kaimahi ratonga tūmatanui kei te whakamahi i te reo Māori, ahakoa nui, ahakoa iti, i a rātou i te mahi.

He pātai i te patapatainga mō te pakari me te rere o te reo Māori, mō ngā tautoko me ngā kaupapa whakapakari ngaio, tae atu ki ngā waiaro ki te reo Māori. He patapatainga Ratonga Tūmatanui a Te Taunaki kawea ai i ia rua tau, e horahia ai he raraunga puiaki mō te whakatinanatanga o te Maihi Karauna i te ratonga tūmatanui.

Ko tētahi mea i tohua i te Rautaki a te Karauna mō te Whakaora ake i te Reo Māori 2019–2023, he maha ngā kawenga a te kāwanatanga e pāpā ana ki te āhua o tā Aotearoa whakamahi, ako, maimoa anō hoki i te reo Māori. Ko te rāngai kāwanatanga nui tonu tētahi 13 ōrau o te tokamatua mahi o Aotearoa. Nō konā, ka nui pea te wāhi ki te rāngai kāwanatanga ki te whakapiki i te aroā me te tautoko i te whakarauoratanga, tae atu ki te ariari me te rere o te reo Māori.

Ko te whai kia ritenga māori noa ngā karere reorua mō te kaupapa hauora tūmatanui hei pēhi i a KOWHEORI-19, he kokinga nui, otirā me tute tonu kia koki tonu ai. I tua atu i te whakamāori ā-kupu noa i ngā karere Pākehā, me whakatupu te mārama ki ngā horopaki ahurea e tau atu ai ngā karere, me pēhea hoki te morimori kia kaha ake ai te ngata o ngā hiahia o te iwi Māori.

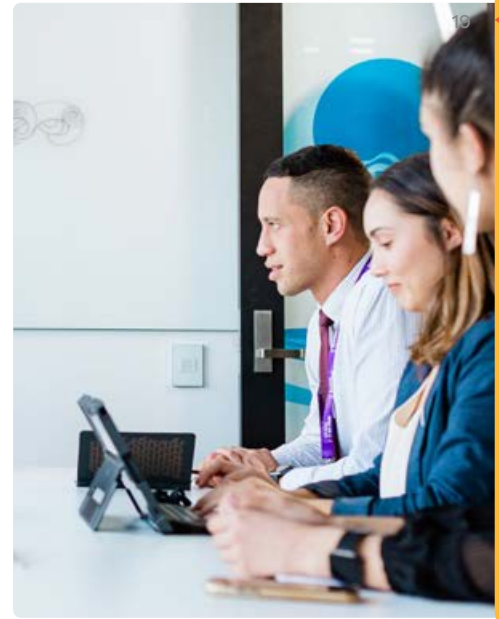
3. Hāunga anō ngā Poari Kaitiaki Kura me Ētahi Atu Pekanga Hinonga Karauna.

## ► Ngā mea ka oti i a mātou ā te 2022/23

Ka:

- › tukua he taputapu, he kupu ārahi ki ngā whakahaere hei tautāwhi i tā rātou tārai, whakatinana mahere reo, tae atu ki tā rātou hopu, tā rātou pūrongo anō i ngā pānga (tae atu ki ngā koninga whaka-te-ao-mārama).
- › tautāwhitia ngā whakahaere rāngai tūmatanui, tūmataiti ki te whakatakoto, ki te whakatinana hoki i ā rātou mahere reo
- › aroturukitia, ka tautokona hoki ngā whakahaere rāngai tūmatanui, tūmataiti kua oti i a rātou he mahere reo mā rātou
- › mahi tahi ki ērā atu whakahaere tātaki o te Maihi Karauna ki te kawea kaupapa e tautoko ana i te rere māori noa o te reo Māori
- › whakatairanga i te hua nui o te whakamahere reo.

Ko te hunga matua e arohia ana mō tēnei whāinga tōmua, ko te rāngai tūmatanui.



## ► Ka pēhea tā mātou arotake i ā mātou tutukinga?

TOHUINE: Te whakapakari i te Maihi Karauna hei tautoko i te Whare o te Reo Mauri Ora	Tūturu Tata/ Paetimata 2021/22	Keonga 2022/23
<b>*1.1</b> Te maha o ngā pūtahi rāngai kāwanatanga ka āwhinatia ki te tārai mahere reo	33	<b>20</b>
<b>1.2</b> Te maha o ngā pūtahi rāngai kāwanatanga (o roto i tōna 200 nei) ka tae mai/mātaki i ngā papamahi whakamahere reo	30	<b>30</b>
<b>1.3</b> Te maha ake o ngā kaupapa whakamahere reo ka kawea ngātahitia e ōna anō pūtahi tātaki	3	<b>4</b>
<b>1.4</b> Te ōrau o ngā pūtahi e mea ana he āwhina tonu tā ngā taputapu, kupu ārahi a Te Taura Whiri i te Reo Māori mō te wāhi ki ā rātou mahere reo	60%	<b>65%</b>
<b>1.5</b> Te ōrau o ngā pūtahi kei te ine, kei te pūrongo anō i ngā koninga whaka-te-ao-mārama (mai i te Kore ki te Pō, mai i te Pō ki te Awatea) e hua ake ana i ngā mahi whakarauora reo Māori.	70%	<b>75%</b>

\*Mai i te Vote Māori Affairs Estimates of Appropriation 2022/23

## 02

## Te whakapiki i te tokomaha o ngāi Aotearoa e maimoa ana i te reo Māori, kia ākona ai, kia kōrerotia ai hei wāhi nui o tō tātou tuakiri ā-motu

### ► He aha i kīia ai he mea nui tēnei?

E mea ana te Whāinga Rongomaio 1 o te rautaki Maihi Karauna, ā te tau 2040, e 85 ōrau (nui atu rānei) o ngā tāngata o Aotearoa e kaingākau ana ki te reo Māori hei tūtanga o te tuakiri ā-motu tē unuhia. Ko te whakamaunga atu, kia noho mātāmua mai te reo Māori ki te whatumanawa o ngāi Aotearoa.

Ki tā rangahau, tāna e tohu mai ana, ko te hanga matua e hemo ai tētahi reo, ko ngā waiaro me ngā uara o te porihanga. Ki te kore te porihanga e whakaae e whaitake ana, e noho taonga ana te reo, ka toimaha ngā mahi whakaora reo, e miere ai pea ngā kaiwhakaora.

I Te Wā Tuku Reo Māori mariko (hei whakakapi mō ngā huihuinga ā-tinana i te Wiki o te Reo Māori o te 2020), neke atu i te 1 miriona ngā tāngata o Aotearoa (1,058.356 te tauranga ake) i whakanui ngātahi i te reo Māori i te wā kotahi. Koia tēnei, ko te hui reo Māori nui katoa, mai, mai anō.

E ai ki te uiuinga a Colmar Brunton i muri i te Wiki o te Reo Māori 2020, e 8 o roto i te 10 o ngāi Aotearoa (tētahi 84% o te taupori), e mea ana he āhuatanga hirahira te reo o roto i te tuakiri ā-motu, he mea anō hoki hei whakahihī mā tātou.

E ai ki ngā kitenga o te rangahau i te kaha o te toro me te pānga o Te Wiki o te Reo Māori 2021, kei te piki tonu te matatau, te poho kererū me te hiahia ki te kōrero Māori.

Koia tēnei ko te hua o ngā hekenga werawera i ngā toa reo Māori o ngā whakatupuranga maha, i ngaringari ake ai te hunga maimoa i te reo Māori ināianei, tēnā i ngā tau katoa o mua atu.

### ► Ngā mea ka oti i a mātou ā te 2022/23

Kal:

- › tautoko mātou i ōna anō kaupapa nui (ā-motu, ā-rohe), mātua rā te Wiki o te Reo Māori me ngā Tohu Reo Māori, hei whakamōruna tonu i te mana o te reo Māori, hei whakatenatena hoki i ngā tāngata katoa o Aotearoa kia tautoko i tōna whakaoranga ake
- › whakatenatena, ka tautāwhi, ka whakanui i ngā mahi a te rāngai tūmataiti ki te whakaora i te reo Māori, mātua rā ērā e kaha ana te toro, te kitea me te whakaawe
- › whakahaere i ōna anō kaupapa whakamānawa i ētahi ekenga nui mō te wāhi ki te reo Māori i te tau 2022
- › whakatupu i tā mātou toro tuihono, i te aroā ki tō mātou waitohu me ā mātou mahi, me tā mātou whiri i te muka tangata ki tō mātou apataki tuihono
- › tuku kaupapa whakatairanga tuihono e aronui ana ki te rangatahi.

Ko te keonga matua o tēnei whāinga tōmua, ko te iwi tūmatanui (te umaraha o Aotearoa).

## ► Ka pēhea tā mātou arotake i ā mātou tutukinga?

TOHUINE: Te whakapiki i te tokomaha o ngāi Aotearoa e maimoa ana i te reo Māori, kia ākona ai, kia kōrerotia ai hei wāhi nui o tō tātou tuakiri ā-motu	Tūturu Tata/Paetīmata 2021/22	Keonga 2022/23
*2.1 Te tokomaha ake o te hunga tūhono ā-īmēra mai	Tohuine hou mō te 2022/23 Paetīmata mō te hunga tūhono ā-īmēra mai: 98,000	Keonga: 110,000 te hunga tūhono ā-īmēra mai Kaha tupu: 12,000 te hunga tūhono hou
*2.2 Te tokomaha ake o te hunga aru pāhopori	Tohuine hou mō te 2022/23 Paetīmata mō te hunga aru pāhopori i ngā pae pāhopori katoa: 136,000	Keonga: 150,000 te hunga aru pāhopori Kaha tupu: 14,000 te hunga aru pāhopori hou
2.3 Te maha ake o ngā hāraunga whakairinga** i ngā pae pāhopori	Tohuine hou mō te 2022/23 Paetīmata mō te kaha aroā i ngā pae matihiko katoa: 15.3 miriona ngā hāraunga i te tau	Keonga: 16.3 miriona hāraunga i te tau Kaha tupu: 1 miriona hāraunga i te tau
2.4 Te piki ā-ōrau o tō mātou apataki e pānui ana i ā mātou kōrero puta noa i ngā pae matihiko	Tohuine hou mō te 2022/23 Paetīmata mō te apataki pānui i ā mātou kōrero: 5%	Keonga: 6% Kaha tupu: 1%
2.5 Te maha o ngā kaupapa ka tautokona – ā-tuihono, ā-tinana rānei	40	40
2.6 Te piki ā-ōrau o te hunga ka uiuia e whakaae ana he mea nui te reo Māori i te ahurea o Aotearoa	Tohuine hou i mō te 2022/23 Paetīmata mō te ōrau o te hunga ka uiuia e whakaae ana he mea nui te reo Māori i te ahurea o Aotearoa: 83%	Te paetīmata i te uinga a Kantar Colmar Brunton: Keonga: 84% o te hunga ka uiuia e whakaae ana he mea nui te reo Māori i te ahurea o Aotearoa Kaha Tupu: 1% te nui ake o te hunga ka uiuia e whakaae ana he mea nui te reo Māori i te ahurea o Aotearoa
2.7 Te ōrau o ngā whakahaere i tautokona e mea mai ana kua neke whaka-te-ao-mārama rātou	70%	70%

\*mai i te Vote Māori Affairs Estimates of Appropriation 2022/23

\*\* Ko te hāraunga whakairinga te katoa o ngā wā i kitea ai tētahi whakairinga i ngā rārangi-wā kaiwhakamahahi, i ngā whāngaitanga rānei.

## 03

## Te waihanga me te whakatairanga rauemi hei tautoko i te whakamahere, te ako me te whakamahi i te reo Māori

### ► He aha i kīia ai he mea nui tēnei?

Kei te Maihi Karauna te kōrero, ko te māia ki te kōrero Māori, ka hua ake i te noho takuhe o te tangata i tōna anō matatau ki te kōrero, me te kaha o te rauhi mai a te taiao e karapotī ana i a ia.

Ko te Whāinga Rongomaio 2 o te Maihi Karauna, hei te 2040, ka kotahi miriona (nui atu rānei) te tokomaha o Aotearoa e mōhio ana, e māia ana hoki ki te kōrero Māori mō ngā mea māmā noa iho.

E eke ai te whāinga rongomaio o te rautaki Maihi Karauna, me tokopae rahi tonu o ngāi Aotearoa kua mau i a rātou ngā pūkenga reo Māori māmā, kua māia hoki ki te whakakorikori i aua pūkenga.

Nā te iti o Te Taura Whiri i te Reo Māori, tē taea e mātou te kotahi miriona tāngata o Aotearoa te āta tautoko ā-tinana atu. I te Rohenga Pūtea 2021, ka tau mai he tahua hei whakapau ki ngā pae me ngā pūnaha Hangarau Pārongo, Whakapāpātanga (ICT), hei tautoko i te hanganga me te whakatairangatanga o ngā rauemi me ngā taputapu mariko ka wātea ki te katoa e kimi āwhina ana e taea ai e rātou ngā mahi whakarauora reo te tautoko atu. Nā konei, kua tāpua ake tā mātou tū ki te ao tukutuku, i te hanganga o tētahi pae tukutuku hou, puna rauemi hou, ko [www.tereo.co.nz](http://www.tereo.co.nz) te ingoa. Ki reira utaina atu ai ā mātou rauemi reo katoa. I waihangatia anō hoki he pae pāhopori hou hei kukume mai i te hunga rangatahi 13–18 tau te pakeke, 10,000 te hunga aruaru i hono mai i te marama tuatahi e tū ana.

### ► Ngā mea ka oti i a mātou ā te 2022/23

Ka:

- › whakatakoto pae ICT mātou, e pai ai te waihanga me te whakarato taputapu, rauemi whakamahere reo; ka whakatairanga i te whārahi o ngā momo ako i te reo; ka whakamahi i ngā rauemi kua takoto kē
- › pātui atu ki ētahi atu whakahaere, tae atu ki Te Mātāwai, ki te waihanga rauemi hou, hei whakaea i ngā hiahia, hei whakakapi hoki i ngā āputa e kitea ana
- › taupua i te tahua reo Māori, me te whai kia tāraia, kia iri hoki he kupu hou tuawhiti, he paerewa tuawhiti anō hoki, hei taunaki i te rere o te Māori
- › tuku pūrongo ā-tau mō te āhua me te whārahi o ngā koha ki te Maihi Karauna e whakaritea ana e ngā pūtahi/whakahaere noho haepapa
- › tonu rangahau e arotahi ana ki te waihanga tauira raraunga, tae atu ngā tikanga papai katoa mō te whakaako me te ako.

Ko ngā keonga mātāmua o tēnei whāinga rautaki, ko te rāngai tūmataiti me ngā whakahaere hapori (ko rātou nei hoki ngā ringa poipoi i te whakaoranga ake o te reo) me ngā tūmatanui (te umaraha o Aotearoa).





### ► Ka pēhea tā mātou arotake i ā mātou tutukinga?

TOHUINE: Te waihanga me te whakatairanga rauemi tautoko i te whakamahere, te ako, me te whakamahi i te reo Māori	Tūturu Tata/Paetimata 2021/22	Keonga 2022/23
3.1 Kia maha ake ngā kupu Māori, e taea ai te kōrero mō ngā āhuatanga whāiti me ngā āhuatanga hou ki te reo Māori	220	<b>240</b>
3.2 Kia whakakotahitia, kia paiheretia ngā putunga kupu	Kia 2 ngā putunga kupu, atu i tā Te Taura Whiri, ka whakamanaia	<b>2</b>
*3.3 Te maha ngā kaupapa rangahau me ngā kaupapa arotake ka tonoa kia kawea	4	<b>4</b>
3.4 Te ōrau o te hunga whakamahi i ngā rauemi ka ine, ka pūrongo mai anō hoki i te koninga whaka-te-ao-mārama (mai i te Kore ki te Pō, i te Pō ki te Awatea), nā runga anō i tā rātou whakamahere, ako, kōrero rānei i te reo Māori	70%	<b>75%</b>

\*mai i te Vote Māori Affairs Estimates of Appropriation 2022/23

# 04

## Te whakarite kia mau tonu te kounga o te reo Māori

### ► He aha i kīia ai he mea nui tēnei?

Mō ētahi o ngāi Māori (me tauwiwi anō pea) e kōrero ana, e ako ana i te reo Māori, he mea hira ake te whakapūmau i te whakaaro Māori me te āhua o te tū a te Māori ki te ao i roto i āna tipakonga kupu, tēnā i ngā kupu ake. E tika ana pea te kōrero, ki te tawhiti kē atu te reo Māori o ia rā i ngā tikanga Māori, kei te haere mai pea te wā e kore ai e māmā ake te waiho mā te reo Māori e whakaahua, e whakapūmau ngā uara me ngā waiaro Māori, tēnā i te waiho mā te reo Pākehā kē e kawē.<sup>4</sup>

E arotahi ana mātou ki te hāpai i te ako me te kōrero o te reo Māori, mā te whakarato taumatua (ngā kaiwhakamāori), rauemi, taputapu papai me te tahua reo anō hoki.

I te Rohenga Pūtea 2021, ka tae mai he tahua hei whakahou i te pūnaha o Te Toi Reo Māori<sup>5</sup> (e mātua horahia ana mā ngā kaiwhakamāori ā-tuhi, ā-waha) kia noho ai ko te paerewa kē hei tūāpapa mōna, kia kaha ake ai hoki tāna haere kōtui ki Te Taura Here Tohu Mātauranga o Aotearoa. Ka tirohia, ka whakahoutia ngā whakangungutanga, ngā whakamātautau me ngā pūnaha taki. Ka tautohua, ka whiriwhiria hoki ngā pānga ki te whakamātautau Tohu Taumata me tērā mō te Rāngai Tūmatanui Māori.

4. Te Taura Whiri i te Reo Māori, *Te Reo Māori mō te Tari/Māori for the Office*, Oxford University Press, 1997.

5. He akoranga utukore Te Toi Reo Māori, he mātanga ngā kaiako, e whakangungua ai te hunga tino matatau ki te reo kia tū ai rātou hei kaiwhakamāori ā-tuhi, ā-waha. Ko te hunga ka angitu i Te Toi Reo Māori ka whai raihana kaiwhakamāori reo Māori.

Hei te 2022/23 tāmatahia ai te Mahere Whakatinana i te Maihi Karauna, me te whai kia tokomaha ake te hunga e maimoa ana, e whakamahi ana i te reo Māori. Kua tū ētahi wānanga e rua e arotahi ana ki te poipoi i tētahi rangamahī reo Māori, me te kawē tonu i ngā mahi i runga i ngā whāinga tōmua kōtui o Te Rangakura. Kei te mahi tahi tonu ngā pūtahi kia koke ngā kaupapa perā i Te Rangakura me tētahi taputapu matapae reo Māori, ko He Ara Poutama mō te reo Māori te ingoa.

I te 2021/22, e rua ngā kaupapa mō Te Papa Kōrero i whakamātauria, e arotahi ana ki ngā hōtaka whakapakari i te reo Māori i te rāngai tūmatanui:

- › Ko te horanga o te reo Māori ki te Rāngai Tūmatanui, mā te hunga kātahi anō ka timata (kei te kore, kei te iti rānei te matatau). Ka haere tonu tēnei ā te 2022/23.
- › Ko te Kura Reo Rāngai Tūmatanui, mā te hunga kei te taumata 3, piki ake rānei i te Whakamātautau Tohu Taumata (LFE). E rere ngātahi ana tēnei me te rautaki Maihi Karauna, e mātua aro ana ki te taiao whānui – ko te whakatakoto i tētahi taiao pai huri noa i te kāwanatanga me te porihanga o Aotearoa e taea ai te reo Māori te whakaora ake. E āwhina ana Te Taura Whiri i te Reo Māori i te rāngai tūmatanui ki te whakapakari ake i tōna rangamahī reo Māori. Koinei tētahi hiahia i tautohua, i tautokona hoki e Te Papa Kōrero (te pae huihui o ngā Kaiwhakahaere Matua o te Maihi Karauna)

Kua pātui atu hoki mātou ki a Toitū Kaupapa Māori Mātauranga ki te tuku Karahipi Paetoru mō te reo Māori. E toru ngā karahipi ka tukua ki ngā ākonga e whai ana i te reo Māori me ērā ka noho mai te reo Māori hei wāhanga matua o ā rātou akoranga ā te 2022. E wātea ana ngā karahipi nei ki ngā ākonga paetahi, paerua, ki ērā hoki kei ō rātou tau tuatahi i te whare paetoru. Hui katoa, e 82 ngā karahipi ka tukua.

Ka mahi tahi tonu mātou ki Te Mātāwai ki te hoahoa tahi i ngā aratohu, ngā taputapu me ngā rauemi kia mōhioia ai, kia kaha ake anō ai te kite, he mea nui kia pūmau te whakaaro Māori i roto i ngā mahi whakaora ake i te reo Māori.

## ► Ngā mea ka oti i a mātou ā te 2022/23

Ka:

- › arotake, ka hoahoa hou mātou i te pūnaha o Te Toi Reo Māori
- › haere tonu ngā mahi whakamana, whakangungu anō hoki i ngā kaiwhakamāori ā-tuhi, ā-waha, me te whakamāmā i te ara e taea atu ai ngā ratonga whakamāori
- › whakatairanga tonu, ka whakahaere tonu i te Whakamātautau Tohu Taumata
- › tahuri ki te kawae tuihono i ētahi hōtaka hei urupare ki ngā wero a Kowheori-19.

Ko ngā keonga mātāmua o tēnei whāinga rautaki, ko te hunga matatau me ngā tāngata takitahi/ngā whakahaere e rapu ana i ngā tautoko mātanga mō te whakarauora/whakamahi i te reo.

## ► Ka pēhea tā mātou arotake i ā mātou tutukinga?

TOHUINE: Te oke kia mau tonu te kounga o te reo Māori	Tūturu Tata/Paetímata 2021/22	Keonga 2022/23
*4.1 Te piki ake ā-orau o te tokomaha ka whai wāhi ki ngā wānanga whakangungu o Te Toi Reo Māori	29%	>25%
4.2 Te tokomaha ka puta ngā ihu i Te Toi Reo Māori	Tohuine hou mō te 2022/23	50
4.3 Te maha o ngā kaupapa Maihi Karauna ka tonoa/tīmatahia/oti mai	Tohuine hou mō te 2022/23	4
*4.4 Te piki o te tokomaha e kawae ana i te LFE	150	180
4.5 Te ōrau o te hunga whai wāhi ki Te Toi Reo Māori e taea ana tā rātou koni whaka-te-ao-mārama te ine	70%	75%

\*mai i te Vote Māori Affairs Estimates of Appropriation 2022/23.

Whakamārama: Mō te SPE 4.1 Ka ea tēnei pikinga ōrau ina piki te tokomaha e whakangungua ana mō te TRM i te 85 tāngata i te 2021/22 ki te 107 i te 2022/23.

## Ō mātou takune me ngā tohuine tutukinga

# 05

## Te hauora ā-whare me te kaha

### ► He aha i kīia ai he mea nui tēnei?

Kei te oke tonu Te Taura Whiri i te Reo Māori kia haumarū, kia hauora te taiao mahi mō ana kaimahi katoa. Ka mau tonu tā mātou aronui ki te noho haumarū i te wā e pēhi tonu ana te urutā i te motu. Ka mahi mai ngā kaimahi katoa i te kāinga i te wā e rere ana a Omikorona. E tū ana, e whāia ana hoki tā mātou kaupapa-here mō KOWHEORI-19. Māna mātou e ārahi mō te wāhi ki te noho haumarū me te noho ora i te mahi.

E rua ngā aronga matua i tēnei wā – ko te whakatinanatanga o te Hōtaka Panonitanga Matihiko me te tārainga o tētahi Rautaki Toitūtanga. Mō ēnei mea e rua, me hou te āhua o te kawē i ngā mahi, ka mutu ka kōkiritia te whāomotanga puta noa i tā mātou umanga. Hei tauira, ka poua he rautaki hangarau whārahi mō te tari i a mātou ka whakarere haere i ngā tukanga whakapau pepa.

### ► Ka pēhea tā mātou arotake i ā mātou tutukinga?

Tohuine	Keonga 2022/23
5.1 Kia urukaha ngā kaimahi ki te kaupapa me ngā mahi	E tohu mai ana te Uiuinga i te Urukaha o ngā Kaimahi, kei runga ake i te 60 ōrau te urukaha o ngā kaimahi (> 60%)
5.2 Kia tutuki ngā whakaritenga whakaōrite whiwhinga mahi	Ka kuhuna ki ngā tuhinga me ngā tikanga katoa e hāngai ana
5.3 Kia pūmau te pai o ngā whakatau arotake, kia pai ake rānei	Kia neke atu i te 'pai' te whakatau (mō ngā pūnaha me ngā whakatina pārongo pūtea, tae atu ki ngā pārongo tutukinga me ōna anō pūnaha, whakatina e kōpūtahi ana)
5.4 Te Hōtaka Panonitanga Matihiko – he tohuine hou mō te 2022/23	Te Whakatinanatanga o te Hōtaka Panonitanga Matihiko Keonga: 40%



# Tā mātou pūtea me ngā tauāki pūtea



# Tā matou pūtea mō te 2022/23

E pūtakea mai ana te tahua a Te Taura Whiri i te Reo Māori i te Rohenga Pūtea: Whanaketanga Māori, i te tāpuinga e whai ake nei:

**Whakarauora Reo mō te Motu** – hei tautoko i te whakarauoratanga ake o te reo Māori i te motu whānui me te whakahaere i Te Taura Whiri i te Reo Māori.

Ko te tikanga, mā te tahua nei ka whakatairangatia, ka rauhitia, ka whakaorangia ake te reo Māori, mā roto mai i:

- › ngā mahi tautini a Te Taura Whiri i te Reo Māori
- › te kawenga ake o tētahi hōtaka rangahau e taunaki ana i ngā mahi whakarauora i te reo Māori
- › Te Maihi Karauna (te Rautaki Reo Māori a te Karauna), me
- › ētahi atu mahi me mātua kawē ake Te Taura Whiri i te Reo Māori i raro i te ture.

Ko te tikanga ka whai wāhi hoki te tahua nei ki te whakatutukinga o ēnei huanga i te Rohenga Pūtea: Whanaketanga Māori:

- › E maimoa ana, e whakapūmau ana, e whakatupu ana a ngāi Māori i tō rātou reo, ā rātou taonga, ō rātou mātauranga me ā rātou tikanga.
- › E whakatupu auroa ana, e whakawhanake auroa ana a ngāi Māori i ā rātou rawa, i ā rātou rauemi.
- › E mau ana i a ngāi Māori ōna anō pūkenga, mātauranga anō hoki.

Ko ngā tauāki pūtea i raro nei e whakaatu ana ka pēhea tā Te Taura Whiri i te Reo Māori whakatutuki i ngā mahi kua tohua māna.

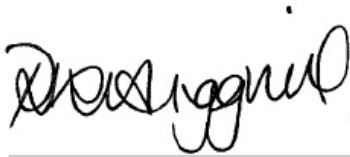
Kei te tūtohi e whai ake nei te katoa o ngā tahua.

## Tūtohi 1: 2022/23 Ngā whiwhinga tūturu me ērā i tohua, i runga anō i te karangatanga tutukitanga

	2021/22 Tūturu Tata \$	2022/23 Pūtea i Tohua \$	Tihoinga \$
Tāpuinga: Whakarauoratanga Reo Māori ā-Motu	13,364,000	11,664,000	(1,700,000)
<b>Whiwhinga katoa – i te Karauna</b>	<b>13,364,000</b>	<b>11,664,000</b>	<b>(1,700,000)</b>
Ētahi atu whiwhinga	41,274	290,000	248,726
<b>Ngā whiwhinga katoa</b>	<b>13,405,274</b>	<b>11,954,000</b>	<b>(1,451,274)</b>
<b>Ngā whakapaunga whakahaere katoa</b>	<b>10,714,892</b>	<b>14,567,911</b>	<b>(3,853,019)</b>
<b>Hemi/(Tarepa)</b>	<b>2,690,382</b>	<b>(2,613,911)</b>	<b>(5,304,293)</b>

# Te tauākī noho haepapa

He mea whakatakoto ngā tauākī matapae pūtea hei tāpae atu i ngā takune o Te Taura Whiri i te Reo Māori ki te Whare Pāremata. Ka rerekē pea ngā hua tūturu i ērā kei ngā tauākī matapae pūtea. E whakaponono ana mātou kei te tika te whakaata mai a ngā tauākī pūtea i ngā kawatau mō te tūnga pūtea me ngā whakahaere a Te Taura Whiri i te Reo Māori mō te tau ka eke ā te 30 o Pipiri 2023. Ka takoto ki te aroaro o te Minita tētahi pūrongo ā-tau, i runga anō i ngā whakahau a te Ture Hinonga Karauna 2004, me ōna anō pūrongo hauwhā e whakaata ana i ngā tutukinga e whakatairitea mai ana ki tēnei Tauākī Kawatau mō ngā Tutukinga. Tēnei te whakaū nei i te tairite o ngā pārongo kei te pūrongo nei me ngā tāpuinga pūtea kei ngā Whakatau Tata mō te tau ka eke ā te 30 o Pipiri 2023, he mea tāpae ki te Whare Pāremata i raro i te wāhanga 13 o te Ture Pūtea Tūmatanui 1989.



**Ahorangi Rawinia Higgins**

**Toihau**

Te Taura Whiri i te Reo Māori  
30 Pipiri 2022



**Charisma Rangipunga**

**Toihau Tuarua**

Te Taura Whiri i te Reo Māori  
30 Pipiri 2022



# Te Tauākī Matapae mō ngā Whiwhinga, Whakapaunga Whānui

Mō te tau i eke i te 30 o Pipiri 2023

2021/22 Pūtea i Tohua (\$)		2021/22 Tūturu Tata (\$)	2022/23 Pūtea i Tohua (\$)
	<b>Whiwhinga</b>		
	<b>Whiwhinga whakahaere mai i te Karauna</b>		
13,364,000	Tāpuinga Whakahaere	13,364,000	11,664,000
<b>13,364,000</b>	<b>Te katoa o ngā whiwhinga whakahaere mai i te Karauna</b>	<b>13,364,000</b>	<b>11,664,000</b>
	<b>Whiwhinga takapūtea</b>		
80,000	Whiwhinga huamoni	38,540	80,000
210,000	Ētahi atu whiwhinga	2,734	210,000
<b>290,000</b>	<b>Te katoa o ngā whiwhinga takapūtea</b>	<b>41,274</b>	<b>290,000</b>
<b>13,654,000</b>	<b>Te katoa o ngā whiwhinga</b>	<b>13,405,274</b>	<b>11,954,000</b>
	<b>Whakapaunga</b>		
5,458,195	Utu kaimahi	4,504,689	6,363,047
310,936	Whakapaunga whakaheke wāriu, whakaurupā	234,780	534,301
650,000	Utu whakatairanga	1,257,388	1,530,000
3,183,690	Utu rangahau, whakawhanake	1,644,362	1,647,000
250,000	Utu whakamahere reo	271,661	270,000
3,801,179	Ētahi atu utu whakahaere i TTWh	2,802,012	4,223,563
<b>13,654,000</b>	<b>Te katoa o ngā whakapaunga whakahaere</b>	<b>10,714,892</b>	<b>14,567,911</b>
<b>13,654,000</b>	<b>Te katoa o ngā whakapaunga</b>	<b>10,714,892</b>	<b>14,567,911</b>
-	<b>Hemi/(tarepa) me te katoa o ngā whiwhinga, whakapaunga whānui</b>	<b>2,690,382</b>	<b>(2,613,911)</b>



# Te Tauākī Matapae mō te Tūnga Pūtea

Ā te 30 o Pipiri 2023

2021/22 Pūtea i Tohua (\$)		2021/22 Tūturu Tata (\$)	2022/23 Pūtea i Tohua (\$)
	<b>Huarawa</b>		
	<b>Huarawa Wātea</b>		
5,074,324	Moniuka, moni pēke	9,459,049	6,397,316
-	Nama kia utua mai	-	-
50,000	GST kia utua mai	50,000	50,000
30,000	Utu tōmua	30,000	30,000
<b>5,154,324</b>	<b>Te Katoa o ngā Huarawa Wātea</b>	<b>9,539,049</b>	<b>6,477,316</b>
	<b>Huarawa he Here kei Runga</b>		
675,743	Whare, rawa, taputapu	673,014	848,713
19,948	Huarawa whakawairua	877	225,000
<b>695,691</b>	<b>Te Katoa o ngā Huarawa he Here kei Runga</b>	<b>673,891</b>	<b>1,073,713</b>
<b>5,850,015</b>	<b>Te Katoa o ngā Huarawa</b>	<b>10,212,940</b>	<b>7,551,029</b>
	<b>Ngā Taunahatanga o Nāiane</b>		
50,000	Ngā nama kia utua atu	50,000	50,000
250,000	Ngā whakawhiwhinga kaimahi	398,000	350,000
<b>300,000</b>	<b>Te Katoa o ngā Taunahatanga o Nāiane</b>	<b>448,000</b>	<b>400,000</b>
	<b>Ngā taunahatanga kei raurangi</b>		
5,000	Ngā whakawhiwhinga kaimahi	5,000	5,000
<b>5,000</b>	<b>Te katoa o ngā taunahatanga kei raurangi</b>	<b>5,000</b>	<b>5,000</b>
<b>5,545,015</b>	<b>HUARAWA MORE</b>	<b>9,759,940</b>	<b>7,146,029</b>
	<b>Tūtanga</b>		
5,545,015	Tahua whānui	9,759,940	7,146,029
<b>5,545,015</b>	<b>Te Katoa o te Tūtanga</b>	<b>9,759,940</b>	<b>7,146,029</b>

# Te Tauākī Matapae mō ngā Nekeneke i te Tūtanga

Mō te tau ka mutu ā te 30 o Pipiri 2023

2021/22 Pūtea i Tohua (\$)		2021/22 Tūturu Tata (\$)	2022/23 Pūtea i Tohua (\$)
5,545,015	Tahua whānui	7,069,558	9,759,940
<b>5,545,015</b>	<b>Te katoa o te tūtanga o te Karauna ā te 1 o Hōngongi</b>	<b>7,069,558</b>	<b>9,759,940</b>
-	Hemi/(tarepa) o roto i ngā mahi whakahaere	2,690,382	(2,613,911)
-	Te katoa o te hemi/(tarepa) i ngā mahi whakahaere	2,690,382	(2,613,911)
<b>5,545,015</b>	<b>Te katoa o te tūtanga o te Karauna ā te 30 o Pipiri</b>	<b>9,759,940</b>	<b>7,146,029</b>

# Te Tauākī Matapae mō te Kapewhiti

Mō te tau ka mutu ā te 30 o Pipiri 2023

2021/22 Pūtea i Tohua (\$)		2021/22 Tūturu Tata (\$)	2022/23 Pūtea i Tohua (\$)
	<b>NGĀ KAPEWHITI I NGĀ MAHI WHAKAHAERE</b>		
	<b>I hua mai (pau atu) he moni i/(ki)</b>		
13,364,000	Ngā whiwHINGA mai i te Karauna	13,364,000	11,664,000
80,000	Ngā huamoni i tae mai	38,540	80,000
210,000	Ngā whiwHINGA mai i wāhi kē	2,734	210,000
(9,145,113)	Ngā utu ki ngā kaiwhakarato mai	(6,417,757)	(8,620,686)
(4,163,714)	Ngā utu kaimahi	(4,347,031)	(6,411,047)
50,000	Te utu i te GST	100,414	50,000
<b>395,173</b>	<b>Ngā kapewhiti more i ngā mahi whakahaere</b>	<b>2,740,900</b>	<b>(3,027,733)</b>
	<b>NGĀ KAPEWHITI I NGĀ MAHI HAUMI</b>		
	<b>I hua mai/(pau atu) he moni i/(ki)</b>		
(385,000)	Te hoko whare, rawa, taputapu	(300,000)	(1,035,000)
(300,000)	Te hoko huarawa whakawairua	-	(300,000)
<b>(685,000)</b>	<b>Ngā kapewhiti more i ngā mahi haumi</b>	<b>(300,000)</b>	<b>(1,335,000)</b>
	<b>NGĀ KAPEWHITI I NGĀ MAHI TAKAPŪTEA</b>		
	<b>I hua mai/(pau atu) he moni i/(ki)</b>		
-	<b>Ngā kapewhiti more i ngā mahi takapūtea</b>	-	-
(289,827)	Te (hekenga)/pikinga more i ngā moniuka me ōna ritenga	2,440,900	(4,362,733)
5,074,324	Te moniuka me ōna ritenga i te tīmatanga o te tau	7,018,149	9,459,049
4,784,497	Te moniuka me ōna ritenga ā te mutunga o te tau	9,459,049	6,397,316
<b>4,784,497</b>	<b>I ahu mai i: Te moniuka me ōna ritenga</b>	<b>9,459,049</b>	<b>6,397,316</b>

# Te tauākī kaupapa-here kaute

## ► He hinonga tāpae pūrongo

I runga anō i te tautuhi a te Ture Hinonga Karauna 2004, he hinonga Karauna Te Taura Whiri i te Reo Māori. Kei Aotearoa ia e noho ana, e mahi ana. Ko ngā ture e mātua tohutohu ana i ngā whakahaere o Te Taura Whiri i te Reo Māori, ko te Ture Hinonga Karauna 2004 me te Ture mō te Reo Māori 2016. Me kī ko te Karauna o Aotearoa te matua o Te Taura Whiri i te Reo Māori. Arā tā mātou whāinga mātāmua, ko te tuku ratonga ki te hunga tūmatanui o Aotearoa. Kāore mātou e whai kia hoki mai he hua taha moni ki a mātou i ā mātou mahi. Nā Te Taura Whiri i te Reo Māori tonu i whiriwhiri kia kīia ia he hinonga painga tūmatanui (PBE) mō te taha ki ngā mahi pūrongo pūtea. Ko ngā tauākī pūtea matapae mō Te Taura Whiri i te Reo Māori, e pā ana ki te tau ka eke ā te 30 o Pipiri 2023, ā, he mea whakaae e te Poari i te 28 o Pipiri 2022.

## ► Te tūāpapa mō te whakaritenga mai o ngā tauākī pūtea

He mea whakarite ngā tauākī pūtea i runga i te whakaaro he whakahaere tūmau tēnei, ā, kua tairite te āhua o te whakahāngai i ngā kaupapa-here kaute i te takanga haeretanga o te tau. He mea whakarite ngā tauākī pūtea a Te Taura Whiri i te Reo Māori i runga anō i ngā whakahau a te Ture Hinonga Karauna 2004, e mea ana me mātua ū ki ngā tikanga mahi kaute e whakaaetia whānuitia ana i Aotearoa (NZGAAP). He mea whakarite anō hoki ngā tauākī pūtea i runga i te ū ki te Upane 2 o ngā paerewa mahi kaute PBE. E āhei ana mātou te whakahāngai i ngā paerewa o te Upane 2 i te mea he iti ake ā mātou whakapaunga i te \$30 miriona. E ū ana ngā tauākī pūtea nei ki te Ritenga Whākinga Māhaki o ngā Paerewa PBE.

## ► Ētahi whakaaro tūāpapa

He mea whakarite ngā tauākī pūtea matapae i runga anō i ngā whakaaro tūāpapa e whai ake nei:

- › Ka whakahaerehia ētahi kaupapa whakatairanga nui hei whakamānawa i ōna anō ekenga nui mō te reo Māori, i te Wiki o te Reo Māori, me ngā Tohu Reo Māori.
- › E 40% neke atu te kaha oti mai o ngā pae tuihono mō Te Toi Reo Māori me te Whakamātautau Tohu Taumata.
- › E 40% neke atu te kaha oti mai o ngā kaupapa Hangarau Whakamōhio.
- › Ka whakatutukihia tonutia ētahi kaupapa Maihi Karauna.
- › Ka tohaina he tahua ki ngā Kaupapa Maihi Karauna hei tautoko i te whakaoranga ake o te reo Māori.
- › E 56 ngā kaimahi wā-poha (ngā FTE) ka tohua kia taea e te pūtea (i tēnei wā e 45).
- › He whakaritenga rīhi whare hou, neke whare anō, me ōna anō whakahoutanga whare.
- › Ko tētahi wāhanga o te pūtea rangahau \$1.000 miriona nei te rahi, ka pau ki ngā rangahautanga hou ka tūtohua tahitia e Te Taura Whiri i te Reo Māori me Te Mātāwai mō Te Rangakura.

E mārara ana Te Taura Whiri i te Reo Māori he mate kei roto i te whakahaere auroa i runga i te pūtea tarepa. I tēnei wā kei te whakamahia he taputapu whakatauiranga matapae hei aroturuki i tēnei āhuatanga.

## ► Te momo moni whakaatu

Ko te tāra o Aotearoa te momo moni e whakaaturia ana ki ngā tauākī pūtea.

# Te rūnātanga o ngā kaupapa-here kaute matua

## ► Ngā whiwhinga

Ko te nuinga o ngā moni whiwhi a Te Taura Whiri i te Reo Māori, e ahu mai ana i te Karauna. Ko te whakaatu i ngā whiwhinga whakawhiti-kore mai i ngā tahua, kei te āhua tonu o te kupu tohutohu (mehemea rā he kupu tohutohu) kei runga i te tahua mō te āhua o te whakamahi i tētahi huarawa i whakawhiti.

Mēnā he 'here' te kupu tohutohu, me mātua whakahoki e te tangata i whiwhi i te tahua ngā moni i whiwhi rā ia ki te kore e whakapaua i runga tonu anō i tā ngā tohutohu i whakahau ai. Me te aha, ka whakaaturia hei taunahatanga, he taunahatanga ka kīia he whiwhinga whakawhiti-kore ā te wā e ea ai ngā 'here'.

Mēnā he 'whakatina' te kupu tohutohu, ehara i te mea me mātua whakahoki e te tangata ngā moni i whiwhi rā ia ki te kore e whakapaua i runga tonu anō i tā ngā kupu tohutohu i whakahau ai. Me te aha, kāore e whakaaturia hei taunahatanga whakawhiti-kore; ka kīia tonutia atu he whiwhinga whakawhiti-kore.

He whakatina kei runga i ngā whiwhinga e tae mai ana ki Te Taura Whiri i te Reo Māori, e mea ana me whakapau anake ki te whakatutuki i ngā whāinga kua āta tohua i te ture nāna Te Taura Whiri i whakatū, me ngā mea e whakaaetia ana mō taua pūtea, e ai anō ki te kaituku mai.

Ki tā Te Taura Whiri i te Reo Māori, kāore he 'here' i runga i ngā moni ka tae mai ki a ia, nō reira ka kīia tonutia atu he whiwhinga i te wā e tika ana kia tae mai.

Ko te wāriu tōkeke o ngā moni whiwhi mai i te Karauna, kua whakataua iho e taurite ana ki ngā rahinga i tohua rā i ngā whakaritenga tuku pūtea.

## ► Ngā huarawa taha pūtea

Ka uru mai ki te moniuka me ōna ritenga ngā moni kei te ringa, ngā moni whiti, ngā moni kei te pēke me ngā moni haumi e toru marama iti ake rānei te roa e eke ai te haumitanga. He mea whakaatu ngā

moni haumi ki te utu i hokona mai ai, ki te wāriu rānei me i hokona atu – ko te mea iti ake o rāua. Ki te whakaheke te wāriu, ka whakaaturia tēnei ki te tauākī o ngā whiwhinga whānui. E whakaaetia ana kua waimaero tētahi nama kia utua mai ina āta kitea e kore e riro mai i Te Taura Whiri i te Reo Māori ngā moni e tika ana i runga i ngā whakaritenga tuatahinga o taua nama. Ko te nui o te waimaerotanga, ko te rerekētanga i waenga i te wāriu kawo e te huarawa me te wāriu me i hurihia hei moniuka.

## ► Ngā huarawa ōkiko

Koia ēnei ko ngā whakapaipaitanga whare rīhi, ngā waka, ngā taonga me ngā tautara noho whare, ngā taputapu tari me ngā taputapu ICT. Ko te wāriu o ēnei ka tuhia tuatahitia, ko te utu i te hokonga mai.

## ► Te hekenga wāriu

He mea tātaitai te hekenga wāriu o ngā huarawa ōkiko i runga i te tikanga rārangi torotika, e tohaina ai te utu o tēnā, o tēnā ki te roanga o ngā tau e whakaaetia ana ka toiora a ia. Kia eke aua tau, kua noho wāriu kore taua mea. Anei ngā whakatau tata mō ngā tau e toiora ana tēnā me tēnā karangatanga rawa, me ngā pāpātanga whakaheke wāriu e hāngai ana ki tēnā, ki tēnā:

- › whakapaipai whare rīhi – rima tau, 20 ōrau
- › taonga, tautara noho whare – rima tau, 20 ōrau
- › taputapu tari – rima tau, 20 ōrau
- › taputapu ICT – whā tau, 25 ōrau
- › pūmanawa rorohiko – whā tau, 25 ōrau

## ► Ngā huarawa whakawairua

Ko ngā pūmanawa rorohiko kāore e noho tāhuhu mai ki te whakahaeretanga o ngā rorohiko, ka whakaaturia hei huarawa whakawairua. Ka tuhia ko te utu i riro mai ai, i tika ai te mahi, ā, ko te āhua o te whakaurupā, he rārangi torotika e whā tau te roa. Ko ngā utu o te tiaki, o te whakatika i ngā pūmanawa rorohiko, ka whakaaturia hei whakapaunga ā te wā e ara ake ai.

## ► Ngā hanga morimori pūtea

He whakamahi tonu Te Taura Whiri i te Reo Māori i ētahi hanga whakanao pūtea i roto i āna mahi o ia rā. Koia ēnei, ko: ngā pūtea pēke, ngā nama mai, ngā nama atu, me ngā whakapipitanga. Ka whakaataria ēnei ki te tauākī tūnga pūtea, ki te wariu tōkeke o tēnā, o tēnā. Ko ngā whiwhinga me ngā whakapaunga ki ngā hanga whakanao pūtea, ka whakaaturia ki te tauākī whakahaere pūtea. Me he kurutete whakawhiti pūtea rāwaho, ka whakawhitia i runga i ngā pāpātanga whakawhiti e hāngai ana ki tēnā, ki tēnā. Karekau ā Te Taura Whiri i te Reo Māori tahua moni rāwaho.

## ► Te Tāke Hokohoko

Kua tuhia ngā tauākī pūtea me te kore e noho mai o te tāke hokohoko ki roto, hāunga anō ngā nama mai me ngā nama atu – e mau mai ana te tāke hokohoko ki ērā.

## ► Ngā paihere

Ko ngā utu kei tua, ka whākina hei paihere ā te wā e ara ake ai te here kirimana, i runga i te mea kāore anō i ea ngā kawenga i ngā taha e rua. Kāore e whākina ngā paihere mō te wāhi ki ngā kirimana kaimahi.

## ► Ngā rīhi

Kei te rīhi Te Taura Whiri i te Reo Māori i tōna whare me ētahi o āna taputapu tari. I te mea kei te kaituku ngā mōreareatanga me te rangatiratanga o ēnei hanga rīhi, ka kīia ēnei he rīhi whakahaere. Ka tohua ngā utu rīhi whakahaere hei whakapaunga i te takiwā e ara ake ai.

## ► Te tākenga

He mana tūmatanui Te Taura Whiri i te Reo Māori kāore e mate ki te utu take mō āna whiwhinga moni.

## ► Ngā tāpuitanga mō ngā whakawhiwhinga kaimahi

Ka tuhia te whakatā ā-tau kia hāngai pū ki te maha o ngā rā e tika ana kia rato ki te kaimahi i mea wā, i mea wā, i runga anō i te pāpātanga utu e hāngai ana i taua wā.

## ► Te tauākī kapewhiti

Ko te moniuka, ko ngā moni kei te ringa, kei te pēke, kei ngā pūtea tono noa, me ētahi atu moni haumi e māmā noa ana te tiki atu, he mea whakarite e Te Taura Whiri i te Reo Māori mō āna mahi tiaki pūtea o ia rā. Ko ngā mahi whakahaere, ko ngā mahi katoa, atu i ngā mahi haumi me ngā mahi takapūtea. Ko ngā moni mai, ko ngā moni ka tae mai i te hokonga atu o te taonga, o te ratonga, me ērā atu puna moni e tautoko ana i ngā mahi whakahaere a Te Taura Whiri i te Reo Māori. Ko ngā moni atu, ko ngā utu kaimahi, utu kaituku taonga mai, ratonga mai, me ngā tāke. Ko ngā mahi haumi, ko ērā e riro mai ai, e riro atu ai rānei ngā oati utu e wātea ana me ērā kāore i wātea, tae atu ki ērā atu huarawa he here kei runga. Ko ngā mahi takapūtea, ko ērā e rerekē ai te āhua o te haupū rawa tūtanga me te haupū rawa noho nama a Te Taura Whiri i te Reo Māori, me ngā mahi e hāngai ana ki te utu o te whakaea i te haupū rawa tūtanga o Te Taura Whiri i te Reo Māori.

## ► Te tohanga o ngā utu

Kua oti i Te Taura Whiri i te Reo Māori te utu o ngā tutukinga te whakatau i runga anō i te pūnaha tiritiri utu i raro iho nei.

## ► Ngā paearu mō ngā utu arorangi

Ko ngā utu arorangi, ko ngā utu i hua katoa mai i te tutukinga kotahi.

## ► Ngā paearu mō ngā utu kīhai i arorangi

Ko ngā utu kīhai i arorangi me ngā utu tukupū rangatōpū, ko ngā utu kāore e taea te āta pare atu, i runga i tētahi tikanga ohaoha whai takenga nei, ki te tutukinga kotahi. Ka tohua kētia ki ngā tutukinga i runga i te ōrau o ngā tūnga wā-poha kua tohua ki tēnā, ki tēnā tutukinga.



**TE TAURA WHIRI  
I TE REO MĀORI**

MĀORI LANGUAGE COMMISSION



[tetaurawhiri.govt.nz](http://tetaurawhiri.govt.nz)