

TE TAURA WHIRI
I TE REO MĀORI

MĀORI LANGUAGE COMMISSION



Te Tauāki
Kawatau mō
ngā Tutukinga

2023-
2024



He Ara Whāia,
He Ara Hou

E te Minita Whanaketanga Māori, te Hōnore Willie Jackson

Nei rā te mihi kau atu ki a koe.

He koanga ngākau e tāpaea atu nei te Tauākī Kawatau mō ngā Tutukinga a Te Taura Whiri i te Reo Māori mō te tau ka eke ā te 30 o Pipiri 2024.



Ahorangi Rawinia Higgins

Toihau



Charisma Rangipunga

Toihau Tuarua

He mea tāpae e Te Taura Whiri i te Reo Māori ki te aroaro o te Whare Pāremata i runga i te whakahau a te wāhanga 149 o te Ture Hinonga Karauna 2004. I runga i tēnei Ture, he hinonga Karauna mana motuhake Te Taura Whiri i te Reo Māori. Ko te Ture mō te Reo Māori 2016 kei te tautuhi i āna kawenga.

Manatārua © Karauna. He mea raihana te hanga manatārua nei i raro i te raihana Creative Commons Attribution 4.0 International. Me kī pēnei ake, e āhei ana koe te tārua, te tohatoha, te raweke kia iti nei i ngā tuhinga, engari me mātua whakaatu nā Te Taura Whiri i te Reo Māori ngā kōrero, me mātua ū anō ki ērā atu here o te raihana. Ko te whakaatu nā Te Taura Whiri i te Reo Māori, me tuhi ā-kupu rawa, kua e tārūatia noatia ngā waitohu o Te Taura Whiri i te Reo Māori.



Manatārua © Karauna

Hei tiroiro i tētahi taura o te raihana nei, haere ki <https://creativecommons.org/licenses/by/4.0/>



Contents

2 He kupu nā te Toihau

4 Ko wai mātou

5 Maihi Karauna

6 Our governance

10 Te arorau wawaotanga
2020–24

13 Ko ō mātou hiahia me
ngā inenga mahi

14 Te whakapakari i te Maihi Karauna, hei
tautoko i te whare o te Reo Mauriora

16 Te whakapiki i te tokomaha puta noa i
Aotearoa e wāriu ana i te reo Māori

18 Te waihanga me te whakatairanga
rauemi hei tautoko i te whakamahere me
te ako, me te whakamahi i te reo Māori

20 Te whakarite kia mau tonu te kounga o
te reo Māori

22 Te hauora ā-whare me te kaha

24 Tā mātou pūtea me ngā tauākī pūtea

25 Tā mātou pūtea mō te 2023/24

26 Te tauākī noho haepapa

31 Te tauākī o ngā kaupapahere kaute

32 Te rūnātanga o ngā kaupapahere
kaute tāpua





He kupu nā te Toihau

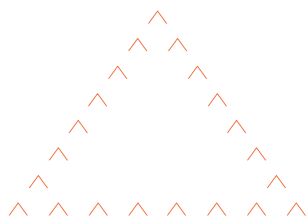
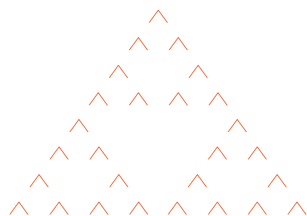
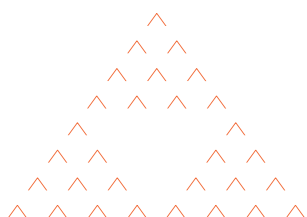
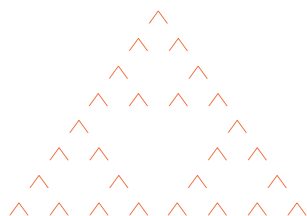
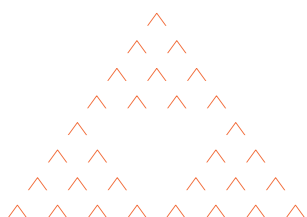
Nō te 2022 i tū ai ētahi tino huritau o te reo Māori: ko te 50 tau mai i te tāpaenga o te petihana reo Māori ki te aroaro o te Whare Pāremata, ko te 40 tau mai i te orokohanga o Te Kōhanga Reo me ētahi hōtaka reo Māori ki te pouaka whakaata, ko te 35 tau mai i te whakamanatanga ā-ture o te reo Māori me te tūnga ake o Te Taura Whiri i te Reo Māori.

Uaua ana te whakapono ki te tawhiti o tā tātou haere i te rima tekau tau. Engari ahakoa anō ngā okenga nui, kei te mīharo tonu au arā ētahi mea e kore rā e rerekē.

Kāore i ārikarika te taetae mai o te tono kia “mutu te puru taikaha atu (i te kupu Māori) ki ngā korokoro”. I ēnei wiki tata nei, ka whakapā mai te matua o tētahi taitama Pākehā ki a mātou. Arā tana tama e mahi rā i tētahi wharekai, ko te ‘Kia ora’ tāna mihi atu ki te kiritaki. Ka amuamu ētahi, me te whakahau i a ia kia kōrero Pākehā. Tonoa ana ia e tana rangatira kia whāmutu i tana ‘Kia ora’ atu. I konā, whakatau ana te tāhae nei me whakarere atu e ia tāna mahi, ahakoa ko tana mahi whaiutu tuatahi tonu. Kei te tū tonu ngā whawhai mō te reo i ngā tāone nui, i ngā tāone iti; ko ngā kaiwhawhai, ko ngā momo tāngata katoa, nō ngā taipakeke katoa, nō ngā momo iwi katoa.

Ko tētahi o aku kawenga i taku tū hei Toihau, ko te arataki i te Maihi Karauna. Ahakoa kei te ara tika tātou e eke ai ētahi whāinga whakahirahira ā te 2040, kei te tuakaihau tonu ērā ekenga e whakanaonao mai ana.

Heoi anō, me aroha ka tika ki ērā atu reo mōrearea o te ao: he reo ka korehāhā i ia 40 rā. Arā hoki ō tātou tuākana o Te Moana-nui-a-Kiwa, e rongu nei i te ngau kino o te whakaaotanga, o te āhuarangi hurihuri, o te huarere niwhaniwha ki te oranga tonutanga o ō rātou rā reo.



“Kei te tū tonu
ngā whawhai
mō te reo i ngā
tāone nui, i ngā
tāone iti; ko ngā
kaiwhawhai,
ko ngā momo
tāngata katoa,
nō ngā taipakeke
katoa, nō ngā
momo iwi katoa.”



Nō te Hakihea au i haere ai hei māngai mō Te Moana-nui-a-Kiwa ki te Tokamatua o te Ao mō te Ngahuru Tau o ngā Reo Taketake, otirā ki tōna whakaterenga, ā, ki te Huihui Whānui o te UN i Te Āporo Nui. He mea akiaki e au ngā kāwanatanga o te ao kia whai i tā te kāwanatanga o Aotearoa i te 35 tau ki muri, arā, kia tiaki ā-ture, kia whakamana ā-ture i ō rātou reo taketake. Kia titiro kōmuri tātou ki te ara reo kua takahia e tō tātou motu, kei te kitea te awe nui o te nanao atu a te kāwanatanga i te ture hei whakamarumaruru mō te reo.

Tērā te whāinga a te Maihi Karauna kia māhorahora te reo. E tutuki ai tērā, me hanga māori noa iho te kōrero Māori. Waihoki mā te maimoa, mā te hāpai a ngāi huhua noa o Aotearoa i te reo Māori e taea ai. Ko te ara e hanga māori noa ai, e whakarīroatia ai te reo, ko te āwhina i ngā hapori ki te kōrero Māori i ngā wāhi katoa, ahakoa te iti, te rahi rānei o te reo ka puaki mai.

Kāore e mutu te hiki o te manawa i ngā takakawenga tōpū a te motu kia reo mauri ora tonu te reo Māori. Kei te ngaringari ake ngā whakahaere e whai ana kia rere māori noa te reo Māori i ā rātou mahi matua.

He tohu tūmatanui, he mihi, he whakamāoritanga, he waiata, he hāpai kē rānei i te reo Māori i te hokomaha – ahakoa kitea, rangona, poipoia rānei tō tātou reo taketake e te arero, he pānga nui whakaharahara tō ēnei mea katoa ki te āhua o tā tātou titiro ki tō tātou tuakiri ā-motu.

E ai ki ā mātou raraunga, e manako nuitia ana te reo Māori e ngā taiohi o Aotearoa i te mea koia rā tētahi tūtanga o tō rātou tuakiri ā-motu. He taiohi pērā i te taitama i whakarere rā i tāna mahi, he kore nōna i hiahia mahi i tētahi wāhi e kōruru ai te rae i te puta o te kupu ‘Kia ora’. Āe rā, he pukepuke moana tonu kia mātua ekengia, engari arā tonu ngā tohu kei te ara whano ki te houkura a Aotearoa, me te reo Māori anō.

Ahorangi Rawinia Higgins

Toihau

Te Taura Whiri i te Reo Māori

21 Paengawhāwhā 2023



Ko wai mātou

He mea whakatū Te Taura Whiri i te Reo Māori i runga i ngā whakahau a Te Ture mō te Reo Māori 1987, ā, ka tū tonu i runga i tā Te Ture mō te Reo Māori 2016¹. He hinonga Karauna mana motuhake tēnei, e tirohia ana āna whakahaere e te Minita Whanaketanga Māori. Ko tōna mana arataki, he kaiwhiri ka kopoua e te Minita.

► Ā mātou mahi

Mā roto mai i ā mātou mahi, ko tā Te Taura Whiri i te Reo Māori:



he whakatairanga i te rere o te reo Māori



he arataki i ngā mahi tahi e whakatinanatia ai te Maihi Karauna



he tuku pūrongo ki te Minita mō ngā take e pāpā ana ki te reo Māori



he whakarite, he whakamana kaiwhakamāori ā-tuhi, ā-waha



he kori ki te whakatinana i te tū o te reo Māori hei reo whaimana ā-ture.

1. Te wāhanga 7 o Te Ture mō te Reo Māori 1987 me te wāhanga 40 o Te Ture mō Te Reo Māori 2016

Ko ēnei kawenga katoa, hei tautoko i ngā mahi whakaora ake i te reo Māori. Ko tā mātou, he kōkiri kia reo mauri ora te reo Māori, kia hanga māori noa te kōrero Māori, kia manakohia hoki te reo e Aotearoa nui tonu; e titikaha ana mātou ki te mahi tahi ki ngā rōpū whai pānga mai ki te whakatutuki i tēnei wawata.

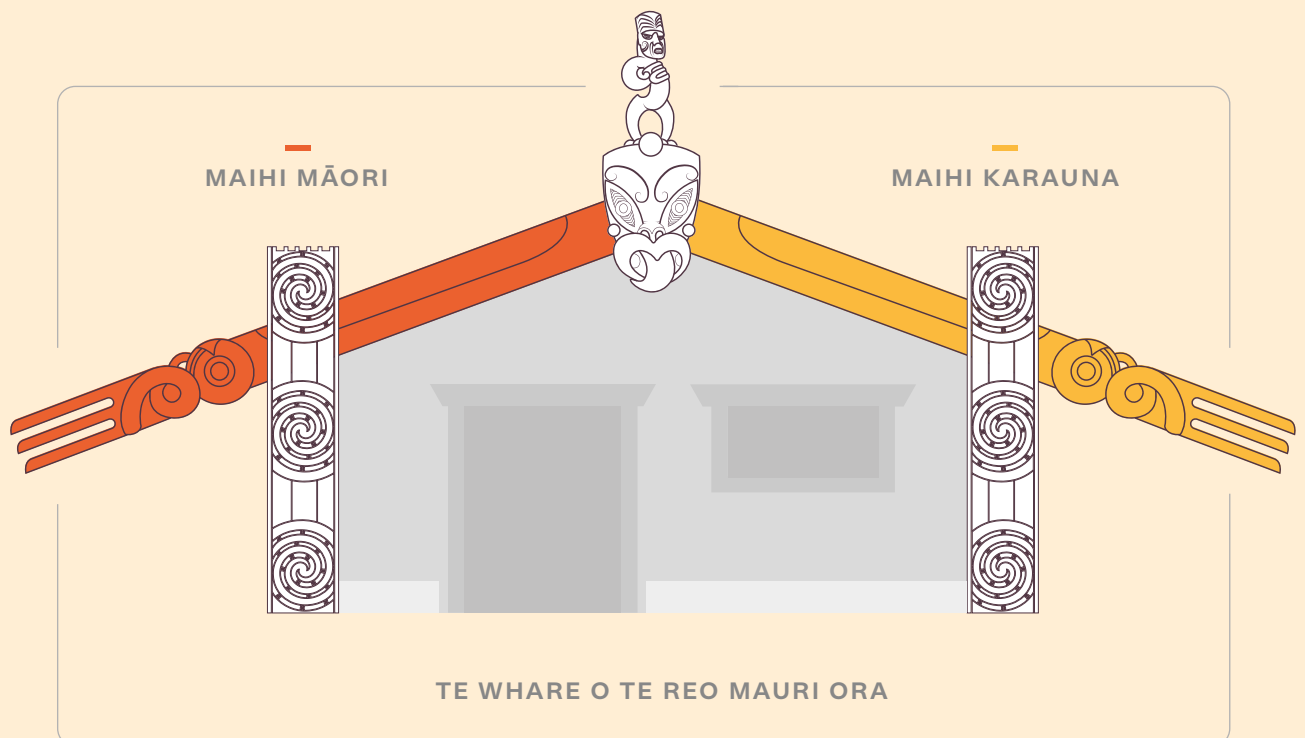


Te Maihi Karauna

Te rautaki reo Māori a te Karauna

5

Ko tā Te Ture mō Te Reo Māori 2016, he whakarite pātuinga i waenga i te Karauna, i ngā iwi Māori me ngāi Māori whānui, hei whakaora ake i te reo Māori, me te whakaae anō ko ngā iwi Māori ngā kaitiaki o te reo Māori. Kei te hāpai anō te Ture i te whakaaro mā te whakatairanga i ētahi whāinga rautaki i Aotearoa, ka koke ngā mahi whakaora reo Māori a te Karauna ki te porihanga nui tonu.



Kua noho ko Te Whare o te Reo Mauriora hei whakaahua i te pātuinga o te Karauna rāua ko ngāi Māori. Ko ngā maihi e rua e tohu ana i ngā hoa pātui e rua. Kua tāraia e tēnā taha, e tēnā taha he rautaki hei kōkiri i ā rāua takoha ki te whakaoranga ake o te reo Māori:

- He titiro whānui tā te rautaki **Maihi Karauna**, e mahi ana ki te ahuahu i ngā āhuatanga pāpori e ngaruru ai te reo Māori, e tautoko anō ai ngā pūnaha kāwanatanga i tēnei ngakinga.

- Ko tā te **Maihi Māori**, he anga whāiti ki te whakapūioio ake i te reo Māori i ngā hapori me ngā whānau.

Nā runga i tana tū hei kaitātaki, he ruruku haere, he aroturuki tā Te Taura Whiri i te Reo Māori i te whakatinanatanga o te Maihi Karauna, he tautāwhi hoki i ngā mahi whakamahere reo. Arā tā mātou arotahinga, ko te whakaawe i te Karauna me te umaraha o Aotearoa kia uru mai ki ngā mahi haumanu i te reo mātāmua o tēnei whenua.

Ko te manaakitanga hei tūāpapa, e rongo ai te manuhiri (i konei nā, ko te hunga kei te ako, tērā rānei e ako i te reo) i te manawanui, i te matapopore, kia tae atu anō ki a rātou ngā momo tautoko e tipu ai rātou.



Te mana arataki

Tokorima ngā kaiwhiri:



Ahorangi Rawinia Higgins
Toihau



Charisma Rangipunga
Toihau Tuarua



Wayne Panapa
Kaiwhiri



Tākuta Jeremy Tātere MacLeod
Kaiwhiri



Bayden Barber
Kaiwhiri

► Ngā whāinga rongomaoro reo Māori ā te tau 2040

85%

Kia 85% (ngahoro) o ngāi Aotearoa e maimoa ana i te reo Māori hei tūtanga matua o te tuakiri ā-motu.

1,000,000

Kia 1 miriona (ngahoro) o ngāi Aotearoa he mōhio ki te kōrero mō ngā mea māmā noa ki te reo Māori, i runga anō i te māia.

150,000

Kia 150,000 o ngāi Māori kua 15 tau neke atu te pakeke he rite te kaha o tā rātou kōrero Māori ki te kaha o tā rātou kōrero Pākehā.



Te Puna Ratonga Reo Māori

Ratonga Reo Māori
Te whakamana, te whakamātau,
te whakawhanake, te tohutohu

Te Amo

**Kaupapahere,
Whakawhanake**
Te rangahau, te arotake

► Tā mātou whakahaere

He mea kōkiri ā
mātou whāinga
tōmua e ēnei
wehenga
whakahaere:

Te Hiringa

Whakamahere Reo
Te tautāwhi i ngā mahere reo

Te Toko Reo

Pātuinga, Mahi Whakatairanga
Ngā whakapāpātanga, te whakatū
kaupapa nui, te whakatairanga

Te Hāpai Ō

Ratonga Rangatōpū
Ngā tautāwhi whakaroto

Kei muri (maui ki te matau): Tuehu Harris,
Te Tumatakuru O'Connell, Matu Ihaka.
Kei mua: Ngapera Hoerara, Ngahiwi
Apanui (CE), Christine Ammunson.



► Tā mātou ahunga rautaki

I roto i ngā tau e whā kua mahue ake nei, arā tā mātou keonga matua, ko te āwhina i a ngāi Aotearoa kia mārama rātou ki te noho taonga mai o te reo Māori, ko te tuku anō hoki i ngā taputapu, i ngā rauemi, i ngā kupu whakatītina e ako ai, e kōrero ai rātou i te reo.

I ēnei whakapaunga kaha, ka tangatanga ake te tangata me te arero ki te kōrero Māori i ia rā, e pūioio ake ai te tuakiri ā-motu. E whakapono ana mātou mā roto i ā mātou mahi whakamarohi, whakamōruna i te reo Māori, ka kaha ake te noho ora o te motu nei, ka mutu ka taumano tērā noho ora.

Ko Te Whare o Te Reo Mauriora tērā e whakaata ana i te hōriri tahi a te Karauna rāua ko ngāi Māori ki te whakahauora i te reo Māori, i te reo taketake o te whenua nei.

Ahakoia ngā whakanui o nā tata nei i ngā ekenga hirahira i ngā kōkiritanga reo Māori o te 35 tau ka taha, kei te āhua tātata tonu te reo Māori ki te korokoro o te parata. Hei tō mai i a ia ki paemaru, me kotahi miriona ōna kaikōrero ā te 2040; kei te mau tonu tā mātou aro ki te whakaawe, ki te tautoko hoki i ngā rōpū whai pānga kei ō rātou ringaringa te whakatinanatanga o tēnei wawata.

Kei tā mātou Tauāki Whakamaunga Atu 2020–2024 ngā taipitopito o ngā takune rautaki tūwaenga e mau ana.

► Te kauawhi i te panonitanga hangarau

Nā te aro kia raungāwari ake te hāpai i ā mātou mahi, kua pai ake te urupare ki ngā hiahia taurangi o ngā kaimahi me ngā kiritaki i tēnei ao hurihuri. Kua hāpainga ake he taputapu hou, he hangarau hou, i pai ai te mahi i tawhiti, otirā, me te pai ake anō hoki o te mahi ngātahi.

I tēnei ahunga hou, kua āhei mātou ki te tuku ratonga, āwhina anō hoki ki ngā kiritaki, ahakoia kei hea ake rātou e noho ana. Hei whakatauirā, kua nanao atu ki a Huitopa hei whakahaere whakangungutanga tuihono mō Te Toi Reo Māori me ngā awheawhe mariko. Nō konei, kua tāwariwari ake te hora i ngā ratonga ki ngā whakahaere e mahi tahi atu nei mātou me ngā kiritaki e āwhinatia atu ana e mātou.

Mā tā mātou hōtaka panoni tautini e whārarahi ake ai te toronga, e whaihua ake ai ngā pānga. Kia noho mātou ki te whakariterite mō ngā rā kei tua, ka toro tonu te ringa ki te hangarau me ngā auahatanga kia pai ake ai ngā ratonga me ngā ara whakarato.

Ahakoia ngā whakanui o nā tata nei i ngā ekenga hirahira i ngā kōkiritanga reo Māori o te 35 tau ka taha, kei te āhua tātata tonu te reo Māori ki te korokoro o te parata.

► Ngā tohuine huri noa i te taiao reo Māori

Arā ētahi pūrongo ka

aroturukihia e mātou kia mārama ai mātou e koke pēhea ana te Ratonga Tūmatanui me te umaraha o Aotearoa i te ara whakatutuki i ngā whāinga rongomaioiro o Te Maihi Karauna. Koia ēnei:

- › Te Taunaki (te Taunaki e anga whakamua ai te Ratonga Tūmatanui)
- › Te pūrongo rangahau mō Te Wiki o te Reo Māori (ka tonoa e mātou i ia tau i a Kantar Public)
- › Te New Zealand General Social Survey (NZGSS)
- › Te Tatauranga o ngā Tāngata Huri Noa i Aotearoa me ō rātou Whare Noho

Mā te auau o te tātari i ēnei tohuine e mārama ake ai mātou me pēhea te whakarerekē, te whakawhāiti anō hoki i ā mātou kohakoha ki ngā kawenga whakarāroa, kawenga whakaora i te reo Māori.

Tohuine	Tau	Te hunga i uia	Ōrau	Āhea ka mahia anō
Kantar Public: Kei te mōhio koe ki Te Wiki o te Reo Māori?	2022	Te katoa o Aotearoa	88	2023
Kantar Public: He āhuatanga hirahira te reo Māori nō tō tātou ahurea i Aotearoa.	2022	Te katoa o Aotearoa	73	2023
Te Taunaki: He pēhea te kaha o tō whakamahi i te reo Māori i tō mahi? (korekore nei)	2021	Te Ratonga Tūmatanui	42	2024
NZGSS: Te ōrau o ngāi Aotearoa e maimoa ana i te reo Māori hei āhuatanga matua o te tuakiri ā-motu.	2018	Aotearoa (15+)	73.6	2023
NZGSS: Te ōrau o ngāi Aotearoa he mōhio, he māia anō ki te kōrero Māori (ahakoa kāore e tino matatau, he matatau ake rānei i tērā)	2016	Aotearoa (15+)	23.6	2023
Te Tatauranga ā-Motu: Te ōrau o te taupori he mōhio ki te kōrerorero mō ngā mea maha o ia rā ki te reo Māori.	2018	Te katoa o Aotearoa	3.96%*	2023

* Nō te Tatauranga ā-Motu o Aotearoa 2018 ēnei raraunga – 185,955 ngā tāngata o roto i te taupori 4,699,755.





Te arorau wawaotanga 2020–24

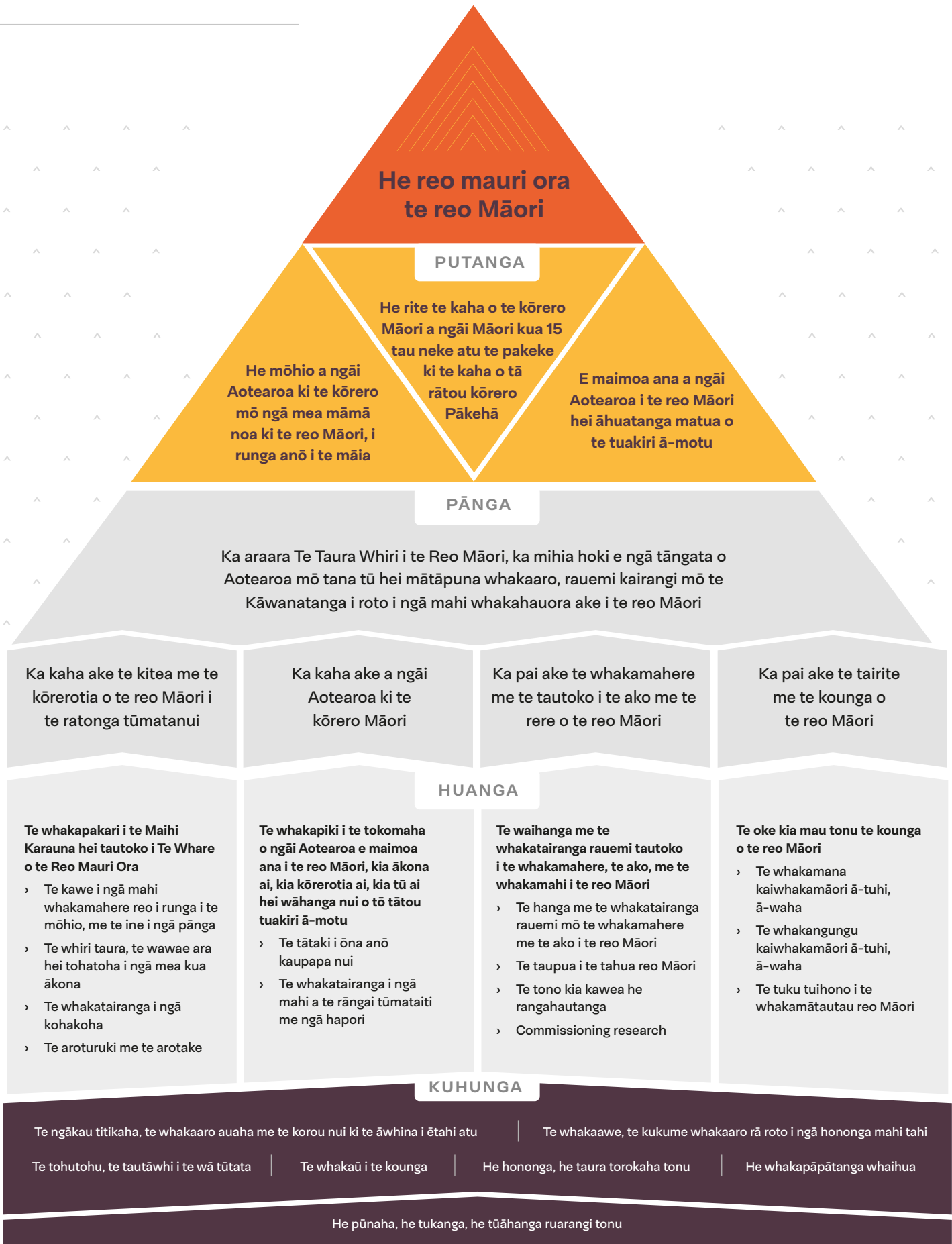
Awe nui ake



TE WHAKAWEA TE TAURA WHIRI I TE REO MĀORI

Awe iti ake

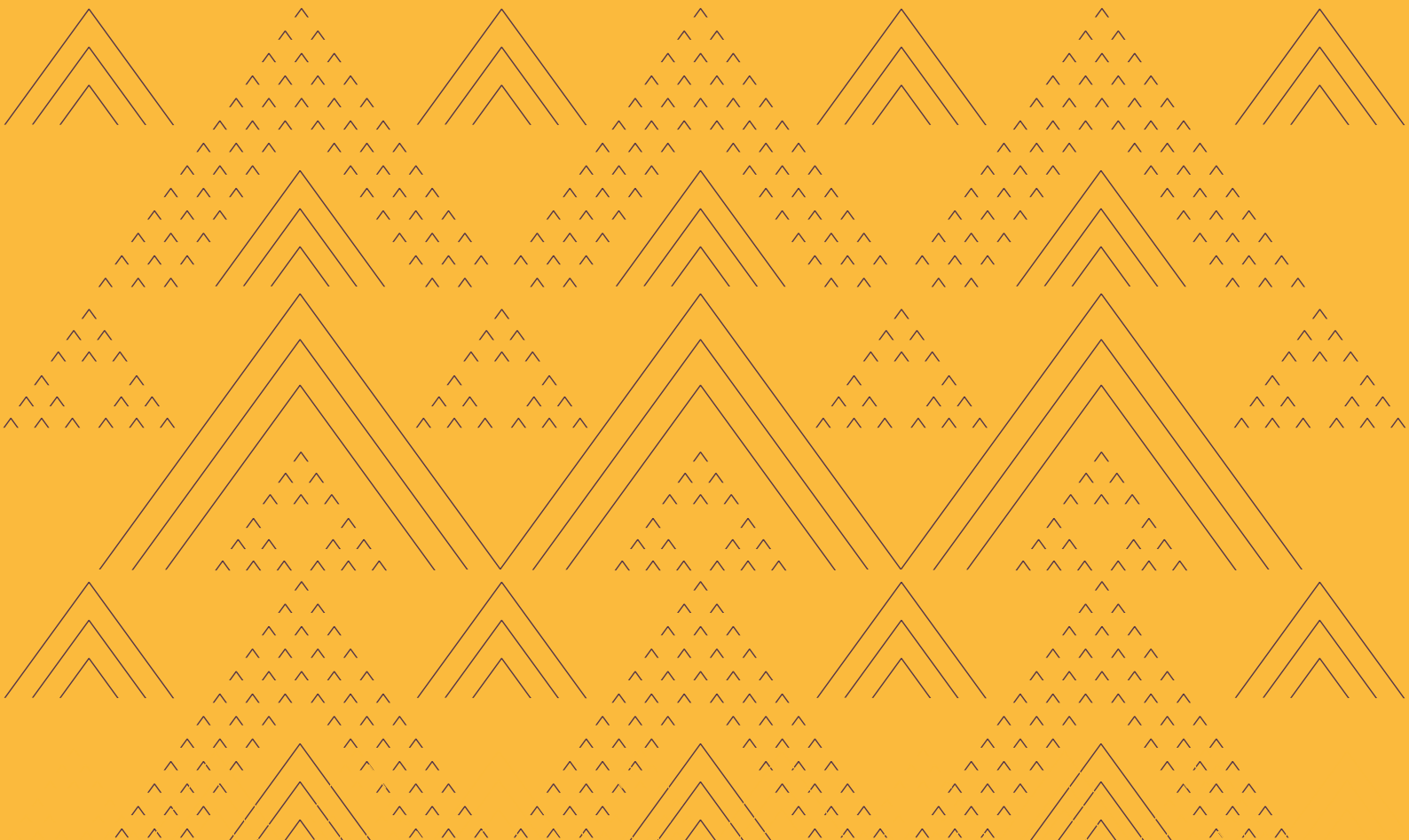
Ko ngā Whāinga o Te Maihi Karauna te Pūtake







Ō mātou hiahia me ngā inenga mahi



01

Te whakapakari i te Maihi
Karauna, hei tautoko i te
whare o te Reo Mauriora

► He aha i kīia ai he mea nui tēnei?

Ko Te Whare o te Reo Mauriora, he pīkaunga nā ngā hoa pātui hei whakahauora ake i te reo Māori, ā, ko te Maihi Karauna, koirā te kohakoha a te Karauna ki te whare nei. Ko tā te Maihi Karauna, he tautuhi i:

- › ngā whāinga me ngā kaupapahere a te kāwanatanga me ērā atu āhuatanga e hāngai ki te whakaoranga ake o te reo Māori
- › te ahunga rautaki pae tawhiti a te kāwanatanga, me ngā whāinga tōmua hei taupua i te whakaoranga ake o te reo.

Ko tētahi wāhanga o te pūtea ka tae mai ki a mātou, mō te ruruku me te aroturuki i te whakatinanatanga o tēnei rautaki reo Māori a te Karauna. Nā runga anō i tērā, ka oti i a mātou ōna anō arotakenga i te 2023 o ētahi mahi whakatauirā me ētahi kaupapa i horahia ki te rāngai tūmatanui².

Kua mutu te aro whāiti ki ngā tari ratonga tūmatanui matua anahe, kua toro iāianā ki te rāngai kāwanatanga whānui ake. Waihoki, kua kore i kaha arohia ngā mahere reo hou, kua anga kē ki te tautoko i te whanaketanga o ngā mahere kua takoto kē, ka tahi, ki te ārahi hoki i ngā whakahaere o te rāngai tūmataiti e minamina ana ki te hāpai mahere reo, ka rua.

I te Pipiri, ka tū te tuatahi o ngā Rauikatanga Maihi Karauna, ko Uhi Tai 2023 te ingoa. Ka kauhau ōna anō tautōhito o te whakaora reo Māori, ka whakatāirihia hoki ngā kaupapa pai e whaihua ana puta noa i Aotearoa. I ako hoki

te hunga i tae ake mō te whai kia hanga māori noa te kōrero Māori, mō ngā hua pai o ngā mahi whakaora reo ki te iwi Māori, me te wāhi ki ngā taputapu hangarau hei kawē i te reo Māori ki te awe māpara.

Tērā anō tētahi paekōrero, he Kaiwhakahaere Matua katoa nō te rāngai kāwanatanga, he huānga anō nō Te Papa Kōrero, ko tā rātou he whakautu pātai, he matapakī i tā rātou mahi tahi me tā rātou tātaki i te whakarīroatanga o te reo i ā rātou rā whakahaere.

Kei te tupu tonu Te Pae Mahere, tā mātou utauta tuihono mō te whakamahere reo. I te 2022/23, ka tāpiria atu he āheinga hou hei āwhina i ngā whakahaere ki te whiriwhiri ki hea ake rātou tīmata ai i te ara whakamahere reo. E mea ana mātou ki te whakahaumako ake i te puna rauemi, ki te whakatitina hoki i te hunga toro mai kia kaha ake te hono mai ki te pae tukutuku, ki te nanao ake hoki i ōna utauta.

Ko tētahi mea i whakatūturutia e te Maihi Karauna: The Crown’s Strategy for Māori Language Revitalisation 2019–2023, he maha ngā kawenga a te kāwanatanga e pāpā ana ki te āhua o tā ngāi Aotearoa whakamahī, ako, manako anō hoki i te reo Māori.

Waihoki, ko te rāngai kāwanatanga whānui tētahi 13 ōrau o te rāngaimahi nui tonu o Aotearoa. Nō reira, ko tōna tikanga he koha nui ka taea e te rāngai kāwanatanga ki te whakapiki i te mārāma, ki te tautoko i te whakaoranga o te reo, tae atu ki te kaha kitea me te kaha rere anō hoki o te reo Māori.

2. All our research and reports can be accessed at <https://en.tetaurawhiri.govt.nz/reports>

► Ngā mea ka mahia e mātou ā te 2023/24

Ka:

- › whakatāiri i te whakarīroatanga o te reo Māori, mā te tautoko me te ārahi i ngā mahi whakamahere reo
- › tautoko i ngā whakahaere kei te waihanga, kei te whakatinana mahere reo
- › mahi tahi ki ngā hoa hāpai i te Maihi Karauna ki te kōkiri kaupapa e tautoko ana i te whakarīroatanga o te reo Māori.

Arā te keonga matua o tēnei whāinga tōmua, ko te rāngai tūmatanui.

► Te arotake i ā mātou tutukinga

Inenga: Te whakapakari i te Maihi Karauna, hei tautoko i te Whare o te Reo Mauriora	Tūturu Tata/ Paetimata 2022/23	Keonga 2023/24
1.1 [†] Te maha o ngā pūtahi rāngai kāwanatanga ka āwhinatia ki te tārai mahere reo	35	40
1.2 Te ōrau o ngā pūtahi e mea ana he āwhina tonu tā ngā taputapu me ngā kupu ārahi a Te Taura Whiri i te Reo Māori mō te wāhi ki ā rātou mahere reo	60%	65%

† Nō roto mai i ngā Whakatau Tata o te Moni ka Tohua ki te Rohenga Pūtea Whanaketanga Māori 2023/24



02

Te whakapiki i te tokomaha
puta noa i Aotearoa e
maimoa ana i te reo Māori

► He aha i kīia ai he mea nui tēnei?

Ko te reo Māori te reo whaimana ā-ture o Aotearoa. E tika ana anō kia mānawatia, kia whakanuia hei tūtanga o tō tātou tuakiri ā-motu tē unuhia. Ko te Whāinga Rongomaio 1 o te Maihi Karauna e mea ana hei te 2040, ka uaratia e te 85 ōrau ngahoro o Aotearoa te noho mai o te reo Māori hei āhuatanga matua o te tuakiri ā-motu.

He ekenga whakahirahira i ngā okenga mō te reo Māori o roto i ngā tau i whakanuia i te 2022: ko te 50 tau tērā mai i te tāpaenga o te petihana ki te Pāremata e tohe ana kia whakaakona te reo Māori i ngā kura; ko te mahi tērā a ngā kaikōkiri me ngā rangatohe tōmua, auroa anō hoki; ko te whakatūnga tērā o te Kōhanga Reo; ko te whakatūnga anō hoki o Te Taura Whiri i te Reo Māori. He wā pai hei āta whakamihi i ngā pou hirahira i poua ai e ngā kaikōkiri o ngā ngahurutanga tau ka hori, ā, hei whakamahara anō i a tātou ki te haepapa kei runga i ō nāianei tāngata ki te kawē tonu i ngā mahi whakaora e tōnu ai te reo.

E ai ki te pūrongo i puta mō te tautoro me te pānga o tā mātou whakanui i te Wiki o te Reo Māori 2023³:

- › o roto i te hunga i uia, kei te kaha te mōhio (e 88%) ki tēnei kaupapa a mātou
- › e 2 o roto i te 3 te hautau o ngā ratonga, taonga rānei e whakatairanga i te Wiki o te Reo Māori e paingia ana e te marea

- › e 3 o roto i te 4 te hautau o ngāi Aotearoa e whakapono ana he wāhanga hirahira te reo Māori nō te ahurea o Aotearoa

E ai anō ki ngā kitenga, ko te nuinga o te hunga kua kawea kia ako i te reo Māori, i kawea e tō rātou pīrangī kia mārara ake rātou ki ngā tikanga Māori me tō rātou hiahia whai wāhi ki ētahi āhuatanga e mātua whakamahia ai te reo Māori. E tohu ana tēnei kei te roraha haere te taiao e matomato ai te reo, kei te nui haere te tūpono ka rokohanga, ka poipoia, ka rere te reo Māori i ngā mahi o ia rā.

► Ngā mea ka mahia e mātou ā te 2023/24

Ka:

- › tautoko mātou i ōna anō kaupapa nui (ā-motu, ā-rohe) e whakapiki ana i te mana o te reo Māori, e whakatenatena ana i a ngāi Aotearoa nui tonu kia hāpai i tōna whakaoranga ake
- › akiaki, ka tautoko, ka whakatairanga i ngā mahi a te rāngai tūmataiti ki te whakahauora i te reo, mātua rā ērā e kaha ana te tautoro, te tāpua me te whakaawe
- › whakatupu i te tautoro tuihono, te mōhiotia mai o tō mātou waitohu, me te mahi tahi ki te hunga whai mai i a mātou i ngā pae tuihono
- › whakatairanga, ka tautoko i ngā kaupapa reo e kawea ana i runga i tā UNESCO Ngahuru Tau o te Ao mō ngā lwi Taketake.

Arā te keonga matua o tēnei whāinga tōmua, ko te hunga tūmatanui (te umaraha o Aotearoa).

3. Te Uiuinga Tūmatanui a Kantar, Hakihea 2022

► Te arotake i ā mātou tutukinga

Inenga: Te Whakapiki i te tokomaha puta noa i Aotearoa e maimoa ana i te reo Māori	Tūturu Tata/ Paetīmata 2022/23	Keonga 2023/24
2.1 [†] Te tokomaha o te apataki imēra	Inenga hou mō te 2022/23 Apataki imēra - paetīmata: 110,000	Keonga: 120,000 te apataki imēra Te tupu: 10,000 ngā kaiaru hou
2.2 [†] Te tokomaha o te apataki pāhopori	Tūturu Tata: 170,000	Keonga: 180,000 te apataki pāhopori Te tupu: 10,000 ngā kaiaru hou
2.3 Te maha o ngā kaupapa ka tautokona – tuihono/ā-tinana	42	40
2.4 Te piki o te ōrau o te hunga ka uia e whakaae ana he wāhanga hirahira te reo Māori nō te ahurea i Aotearoa	Inenga hou mō te 2022/23: 73% ⁴ Te ōrau paetīmata o te hunga i uia e whakaae ana he wāhanga hirahira te reo Māori nō te ahurea i Aotearoa: 73%	Uinga a Kantar Colmar Brunton - paetīmata: Keonga: e 74% o te hunga i uia e whakaae ana he wāhanga hirahira te reo Māori nō te ahurea i Aotearoa Te tupu: ka 1% te nui ake o te hunga i uia e whakaae ana he wāhanga hirahira te reo Māori nō te ahurea i Aotearoa

† Nō roto mai i ngā Whakatau Tata o te Moni ka Tohua ki te Rohenga Pūtea Whanaketanga Māori 2023/24

4. Te paetīmata i te pūrongo rangahau a Kantar Public mō Te Wiki o te Reo Māori 2022 (Hakihea 2022).

03



Te waihanga me te whakatairanga rauemi hei tautoko i te whakamahere, te ako me te whakamahi i te reo Māori

► He aha i kīia ai he mea nui tēnei?

Ko te Whāinga Rongomaioro 2 o te Maihi Karauna e mea ana kia kotahi miriona ngahoro ngā tāngata o Aotearoa he mōhio ki te kōrero mō ngā mea māmā noa ki te reo Māori ā te tau 2040. He whakahaere iti Te Taura Whiri i te Reo Māori.

Nōhea hoki e kawea ā-tinanatia ai e ia he āwhina ki te kotahi miriona tāngata. Ko tā mātou kē ia, he hoahoa, he tukutuku rauemi ki ērā kei te kimi āwhina, kia whai wāhi mai ai rātou ki te tōpūtanga o ngā mahi haumanu i te reo.

Kia piki te tokomaha e kōrero Māori ana, ka piki anō te mana o te reo. Ā, mā reira e tāpua ake ai, e wātea ake anō ai hoki te reo ki ērā kāore anō pea kia āhei ki te ako i te reo ā mohoa noa nei. Mā reira hoki ka ora ake te mauri o te reo, e tupu ai te hiahia o te tāngata ki te ako, ki te tuku i te reo kia rere hei reo kōrerorero noa.

Ā te wā e riro ai te kōrero Māori hei hanga māori noa i ngā kawenga o ia rā i Aotearoa nei, tērā e noho koia anō hoki te mea ka paihere i ngā iwi, ka whakakaha anō i ō tātou hapori.

Koinei e whai ake nei ā mātou mahinga ki te ipurangi hei whakapai ake i te tuku tuihono i ngā āwhina:

- › Tā mātou pae tukutuku rangatōpū www.tetaurawhiri.govt.nz

- › Tā mātou pae tukutuku rauemi reo Māori www.reomaori.co.nz
- › Ngā tātai kōrero o te reo Māori i www.storiesoftereo.nz
- › He kiwhaiaro i Pukamata, i Paeāhua, i LinkedIn, i Tihau, i TikTok
- › He ataata i YouTube

► Ngā mea ka mahia e mātou ā te 2023/24

Ka:

- › waihanga, ka tukutuku taputapu, rauemi ki te ara tuihono, ka tahi, mā te whakahaere tonu i ngā awheawhe whakahaere reo, ka rua
- › tautoko i te whakawhānuitanga o te punakupu reo Māori me te hanganga o te kupu Māori hou
- › tuku pūrongo i ia tau mō te āhua me te whānui o ngā takoha ki te Maihi Karauna e whakaritea mai ana e ngā pūtahi noho haepapa
- › tono rangahautanga, ā, ka kawē tonu i ngā mahi arotake, aroturuki i Te Whare o te Reo Mauriora me te Maihi Karauna.

Arā ngā keonga matua o tēnei whāinga tōmua, ko te rāngai tūmataiti me ngā whakahaere i te hapori (ko rātou hoki kei te whakamāmā ake i te kawenga o ngā mahi whakaora reo), tae atu ki a ngāi tūmatanui mā (te umaraha o Aotearoa).

► Te arotake i ā mātou tutukinga

Inenga: Te waihanga me te whakatairanga rauemi hei tautoko i te whakamahere, te ako me te whakamahi i te reo Māori	Tūturu Tata/ Paetimata 2022/23	Keonga 2023/24
3.1 Te maha o ngā whaitua kupu/kaupapa whāiti, pērā i te Hangarau Mōhiohio, i te Pūtaiao, i te Rāngai Tūmatanui, i te aha atu, ka tautāwhitia hei whakangata i te hiahia ki te kupu hou	Inenga hou 2023/24	4
3.2[†] Te maha o ngā kaupapa rangahau, arotake ka tonoa kia kawea	4	4
3.3 Te whakaū i te kounga o ngā pūrongo rangahau i runga anō i te Anga Matatika mō ngā Mātāpono Kaupapa Māori ⁵	Inenga hou 2023/24	I eke / kāore i eke
3.4 Te whakaū i te kounga o ngā pūrongo arotake i runga anō i ngā Paerewa Arotake mō Aotearoa ⁶	Inenga hou 2023/24	I eke / kāore i eke

† Nō roto mai i ngā Whakatau Tata o te Moni ka Tohua ki te Rohenga Pūtea Whanaketanga Māori 2023/24



5. Te Anga mō ngā Mātāpono Kaupapa Māori [Kaupapa Māori | What Works](#)

6. Ngā Paerewa Arotake a SPERU mō Aotearoa [ANZEA-Superu-Evaluation-standards-final-020415.pdf](#)

04

Te oke kia mau tonu te
kounga o te reo Māori

► He aha i kīia ai he mea nui tēnei?

Mō ētahi o ngāi Māori (me tauīwi anō pea) e kōrero ana, e ako ana i te reo Māori, he mea hira ake te whakapūmau i te whakaaro Māori me te āhua o te tū a te Māori ki te ao i roto i āna tīpakonga kupu, tēnā i ngā kupu ake. E tika ana pea te kōrero, ki te tawhiti kē atu te reo Māori o ia rā i ngā tikanga Māori, kei te haere mai pea te wā e kore ai e māmā ake te waiho mā te reo Māori e whakaahua, e whakapūmau ngā uara me ngā waiaro Māori, tēnā i te waiho mā te reo Pākehā kē e kawē.⁷

I tā mātou tū hei kaitātaki i te rurukutanga me te whakatinanatanga o te Maihi Karauna, ko tā mātou arotahinga, ko te whakaū i te kounga o te reo Māori, mā te whakamana kaiwhakamāori ā-tuhi, ā-waha, mā te whakamātautau anō i te matatau ki te reo Māori.

Mā te whakahounga i Te Toi Reo Māori⁸ (te hōtaka mā ngā kaiwhakamāori), ka noho ko ngā paerewa kē hei tūāpapa mōna, ka kaha ake anō hoki tana haere kōtui ki Te Anga Tohu Mātauranga o Aotearoa me ngā paerewa o tāwāhi mo te whakamāori ā-tuhi, ā-waha. Ka panonitia anō hoki ōna anō pūnaha aromatawai kia taea ai ngā whakamātautau te whakarato tuihono atu.

Ka pūmau tonu te mahi tahi ki Te Mātāwai ki te whakamōrunga i ngā aratohu, i ngā utauta me ngā rauemi, otirā me te whakapau kaha tonu kia mārama, kia ariari ake hoki te kitea o te wāhi nui ki ngā uara Māori me ngā hekenga werawera hei whakaora ake i te reo Māori.

► Ngā mea ka mahia e mātou ā te 2023/24

Ka tū tonu tā mātou:

- › arotake, tā mātou hoahoa hou i te pūnaha whakamana nei, i Te Toi Reo Māori
- › whakamana, rēhita, taupua anō hoki i ngā kaiwhakamāori ā-tuhi, ā-waha
- › whakatairanga, whakarato anō hoki i ngā Whakamātautau Tohu Taumata
- › whakamāori kōrero, whakawhanake reo, me te tuku kupu āwhina taha reo

Arā ngā keonga matua o tēnei whāinga tōmua, ko te hunga matatau ki te reo Māori, ko te rāngai tūmatanui, me ērā e kimi ana i ngā āwhina whāiti mō te whakawhanake reo me ngā kupu āwhina whāiti.

7. Te Taura Whiri i te Reo Māori, Te Reo Māori mō te Tari/Māori for the Office, Oxford University Press, 1997.

8. He kaupapa utukore a Te Toi Reo Māori, he tautōhito ngā kaiako, ko tāna he poipoi i te hunga tino matatau ki te reo mei kore rātou e whakamanaia hei kaiwhakamāori ā-waha, ā-tuhi. Ko Te Toi Reo Māori te ara whano ki te raihana kaiwhakamāori ā-tuhi, ā-waha

► Te arotake i ā mātou tutukinga

Inenga: Te oke kia mau tonu te kounga o te reo Māori	Tūturu Tata/ Paetimata 2022/23	Keonga 2023/24
4.1 [†] Te tokomaha ka whakauru ki ngā whakangungutanga o Te Toi Reo Māori (mā ngā kaiwhakamāori)	80	85
4.2 [†] Te tokomaha ka whakauru ki te Whakamātautau Tohu Taumata	187	200

[†] Nō roto mai i ngā Whakatau Tata o te Moni ka Tohua ki te Rohenga Pūtea Whanaketanga Māori 2023/24



05

Te hauora ā-whare
me te kaha

► He aha i kīia ai he mea nui tēnei?

E whakarirā ana Te Taura Whiri i te Reo Māori kia haumarū, kia hauora te taiao e mahi nei āna kaimahi. Kei ngā kaimahi katoa ngā taputapu e pai ai te mahi tahi, te noho ki wāhi kē mahi ai, me te aro ake ki ō rātou anō hiahia e noho hauora ai rātou, e noho ora anō ai ō rātou whānau.

E arotahi ana mātou ki te whakaoti i te Hōtaka Panonitanga Matihiko. Mā te panonitanga matihiko rawa e kaha ake ai te whakamoamoā i roto i ngā whakahaere tara-ā-whare, e kaha ake ai te tautoro whakawaho, e eke anō ai ngā wheako ki te taumata i ā mātou mahinga tahitanga ki ētahi atu.

I te tau ka hori, kua autaiā tonu te kaunuku o te Hōtaka Panonitanga Matihiko, ā, e titikaha ana mātou kia tutukī rawa te mahi nei ā te 2023/24.

► Ngā mea ka mahia e mātou

Mā te uakaha tonu e tutukī ai ngā keonga mō ngā tūāmahi o te hōtaka nei, tae atu ki ēnei nā:

- › te hora i ngā utauta whakamāori hou
- › te whakamahi pae hou hei whakarato tuihono i ngā aromatawai me ngā whakamātautau
- › te whakamahi atamai raraunga kia pai ake ai te whakamahere, kia whaihua ake ai ngā mahi
- › te whakatū pūnaha Pūmanawa Tāngata hei whakataki i ngā mahi kimi kaimahi
- › te tomonga atu me te whakahaere rauemi puta noa i tā mātou whatunga matihiko

Ka inea te angitu i runga anō i te pānga o ēnei panonitanga ki te tutukinga o ngā mahi.

Āpiti atu ki te whakaotinga o te Hōtaka Panonitanga Matihiko, ka whakapaua tonuhia te rawa me te kaha ki te whakapakari ake i ō mātou āheinga matihiko, tae atu ki te rapunga o ngā tāngata pūkenga, te noho haumarū i te ipurangi me te noho matatapu o ngā raraunga.

E whakapono ana mātou mā te whakatinanatanga o te Hōtaka Panonitanga Matihiko ka pai ake tā mātou whakarato i ā mātou kiritaki, ka whakamoamoā ake ngā whakahaere, ka tau anō te angitu tautini ki a mātou i tēnei ao pakihī e kaha nei te hurihuri.

► Te arotake i ā mātou tutukinga

Tohuine	Tūturu Tata/ Paetīmata 2022/23	Keonga 2023/24
5.1 Ko te kaha o te ngākau pai o ngā kaimahi ki te mahi, kei te rite, kei runga ake rānei i te kaha toharite, huri noa i te rāngai tūmatanui	73%	E ai ki te Uiuinga i te Ngākau Pai o ngā Kaimahi, kei runga ake i te 60 ōrau (> 60%)
5.2 Kia ea ngā whakaritenga whakaōrite whiwhinga mahi	Āe	E mau mai ana ki ngā tuhinga me ngā ritenga katoa e hāngai ana
5.3 Kia pūmau tonu, kia pai ake rānei te whakatau a te kaiarotake	Pai	Kia neke atu i te 'pai' te whakatau (mō ngā pūnaha pārongo pūtea me ngā whakatina pūtea, tae atu ki ngā pārongo tutukinga me ōna anō pūnaha, whakatina e kōpūtahi ana) Kia 'tino pai' tonu te whakatau (mō te taiao whakatina ka poua e te tumu whakahaere, tae atu ki ngā pūnaha pārongo pūtea me ngā whakatina pūtea)





Tā mātou pūtea me ngā tauākī pūtea





Tā mātou pūtea mō te 2023/24

I ahu mai te pūtea a Te Taura Whiri i te Reo Māori i te Rohenga Pūtea: Whanaketanga Māori, i te tāpuinga e whai ake nei:

Whakarauora Reo mō te Motu – hei tautoko i te whakarauoratanga ake o te reo Māori ki te motu whānui me te whakahaere i Te Taura Whiri i te Reo Māori.

Ko te tikanga, mā te pūtea nei ka whaihua te whakatairanga, te rauhitanga me te whakaoranga ake o te reo Māori, mā roto mai i:

- › ngā whakahaere tautini a Te Taura Whiri i te Reo Māori
- › te hāpainga o tētahi hōtaka rangahau e taunaki ana i ngā mahi whakahauora ake i te reo Māori
- › Te Maihi Karauna (te rautaki reo Māori a te Karauna), me
- › ētahi atu mahi me mātua hāpai e Te Taura Whiri i te Reo Māori i runga anō i te ture.

Ko te tikanga ka whai wāhi atu hoki te pūtea nei ki te whakatutukinga o ēnei huanga i te Rohenga Pūtea: Whanaketanga Māori:

- › E maimoa ana, e whakapūmau ana, e whakatupu ana a ngāi Māori i tō rātou reo, i ā rātou taonga, i ō rātou mātauranga me ā rātou tikanga.
- › E whakatupu auroa ana, e whakawhanake auroa ana a ngāi Māori i ā rātou rawa, i ā rātou rauemi.
- › He pūkenga, he mātauranga e mau haere ana i a ngāi Māori

Ko ngā tauāki pūtea i raro nei e tohu ana ka pēhea tā Te Taura Whiri i te Reo Māori whakatutuki i ngā mahi kua tohua māna.

Kei te tūtohi e whai ake nei te katoa o te pūtea.

Tūtohi 1: Ngā whiwhinga tūturu me ērā i tohua, i runga anō i te karangatanga huanga, 2023/24

	2022/23 Tūturu Tata \$	2023/24 Pūtea i Tohua \$	Tihoinga \$
Tāpuinga: Whakarauoratanga Reo Māori ā-Motu	11,664,000	10,914,000	(750,000)
Ngā whiwhinga katoa – i te Karauna	11,664,000	10,914,000	(750,000)
Ētahi atu whiwhinga	1,032,946	390,000	(642,946)
Ngā whiwhinga katoa	12,696,946	11,304,000	(1,392,946)
Ngā whakapaunga whakahaere katoa	13,838,889	14,863,821	1,024,932
Hemi/(Tarepa)	(1,141,943)	(3,559,821)	(2,417,878)

Te tauākī noho haepapa

He mea whakatakoto ngā tauākī pūtea matapae hei tāpae atu i ngā takune o Te Taura Whiri i te Reo Māori ki te Whare Pāremata. Ka rerekē pea ngā hua tūturu i ērā kei ngā tauākī pūtea matapae. E whakapono ana mātou kei te tika te whakaata mai a ngā tauākī pūtea i ngā kawatau mō te tūnga pūtea me ngā whakahaere a Te Taura Whiri i te Reo Māori mō te tau ka eke ā te 30 o Pipiri 2024. Ka takoto ki te aroaro o te Minita tētahi pūrongo ā-tau, i runga anō i ngā whakahau a te Ture Hinonga Karauna 2004, me ōna anō pūrongo hauwhā e whakaata ana i ngā tutukinga e whakatairitea mai ana ki tēnei Tauākī Kawatau mō ngā Tutukinga. Tēnei te whakaū nei i te tautokorua o ngā pārongo kei te pūrongo nei me ngā tāpuinga pūtea kei ngā Whakatau Tata mō te tau ka eke ā te 30 o Pipiri 2024, he mea tāpae hoki ki te Whare Pāremata i raro i te wāhanga 13 o te Ture Pūtea Tūmatanui 1989.



Ahorangi Rawinia Higgins

Toihau

Te Taura Whiri i te Reo Māori
30 Pipiri 2023



Charisma Rangipunga

Toihau Tuarua

Te Taura Whiri i te Reo Māori
30 Pipiri 2023

Te tauāki matapae mō ngā whiwhinga me ngā whakapaunga whānui

Mō te tau ka mutu ā te 30 o Pipiri 2024

2022/23 Pūtea i Tohua (\$)		2022/23 Tūturu Tata (\$)	2023/24 Pūtea i Tohua (\$)
	Ngā Whiwhinga		
	Whiwhinga whakahaere mai i te Karauna		
11,664,000	Tāpuinga whakahaere	11,664,000	10,914,000
11,664,000	Te katoa o ngā whiwhinga whakahaere mai i te Karauna	11,664,000	10,914,000
	Whiwhinga takapūtea		
80,000	Whiwhinga huamoni	180,000	80,000
210,000	Ētahi atu whiwhinga	852,946	310,000
290,000	Te katoa o ngā whiwhinga takapūtea	1,032,946	390,000
11,954,000	Te Katoa o ngā Whiwhinga	12,696,946	11,304,000
	Ngā Whakapaunga		
6,363,047	Utu kaimahi	5,798,040	7,323,404
534,301	Whakapaunga whakaheke wāriu, whakaurupā	321,265	748,640
1,530,000	Utu whakatairanga	1,207,093	1,280,000
1,090,000	Utu rangahau, whakawhanake	717,811	1,335,000
270,000	Utu whakamahere reo	645,500	289,000
557,000	Utu ratonga reo	264,494	730,000
4,223,563	Ētahi atu utu whakahaere i TTWh	4,884,685	3,157,777
14,567,911	Te katoa o ngā whakapaunga whakahaere	13,838,889	14,863,821
14,567,911	Te katoa o ngā whakapaunga	13,838,889	14,863,821
(2,613,911)	Hemi/(tarepa) taha whakahaere, me te katoa o ngā whiwhinga, whakapaunga whānui	(1,141,943)	(3,559,821)

Te tauākī matapae mō te tūnga pūtea

Ā te 30 o Pipiri 2024

2022/23 Pūtea i Tohua (\$)		2022/23 Tūturu Tata (\$)	2023/24 Pūtea i Tohua (\$)
	Ngā Huarawa		
	Huarawa wātea		
6,397,316	Moniuka, moni i te pēke	5,950,040	2,288,859
-	Nama kia utua mai	-	-
50,000	GST kia utua mai	50,000	50,000
30,000	Utu tōmua	30,000	30,000
6,477,316	Te Katoa o ngā Huarawa Wātea	6,030,040	2,368,859
	Ngā Huarawa he here kei runga		
848,713	Whare, rawa, taputapu	2,513,551	2,179,191
225,000	Huarawa whakawairua	736,386	1,172,106
1,073,713	Te Katoa o ngā Huarawa he Here kei Runga	3,249,937	3,351,297
7,551,029	Te Katoa o ngā Huarawa	9,279,977	5,720,156
	Ngā taunahatanga o nāianeī		
50,000	Ngā nama kia utua atu	50,000	50,000
350,000	Ngā whakawhiwhinga kaimahi	350,000	350,000
400,000	Te Katoa o ngā Taunahatanga o Nāianeī	400,000	400,000
	Ngā taunahatanga kei raurangi		
5,000	Ngā whakawhiwhinga kaimahi	5,000	5,000
5,000	Te Katoa o ngā Taunahatanga kei Raurangi	5,000	5,000
7,146,029	HUARAWA MORE	8,874,977	5,315,156
	Tūtanga		
10,016,920	Tahua whānui	8,874,977	5,315,156
10,016,920	Te Katoa o te Tūtanga	8,874,977	5,315,156

Te tauākī matapae mō ngā nekeneke i te tūtanga

Mō te tau ka mutu ā te 30 o Pipiri 2024

2022/23 Pūtea i Tohua (\$)		2022/23 Tūturu Tata (\$)	2023/24 Pūtea i Tohua (\$)
7,069,558	Tahua whānui	10,016,920	8,874,977
7,069,558	Te katoa o te tūtanga ki te Karauna ā te 1 o Hōngongoi	10,016,920	8,874,977
2,947,362	Hemi/(tarepa) o roto i ngā mahi whakahaere	(1,141,943)	(3,559,821)
2,947,362	Te katoa o te hemi/(tarepa) i ngā mahi whakahaere	(1,141,943)	(3,559,821)
10,016,920	Te Katoa o te Tūtanga ki te Karauna ā te 30 o Pipiri	8,874,977	5,315,156

Te tauākī matapae mō ngā kapewhiti

Mō te tau ka mutu ā te 30 o Pipiri 2024

2022/23 Pūtea i Tohua (\$)		2022/23 Tūturu Tata (\$)	2023/24 Pūtea i Tohua (\$)
NGĀ KAPEWHITI I NGĀ MAHI WHAKAHAERE			
Ka hua mai (ka pau atu) he moni i/(ki)			
11,664,000	Ngā whiwhinga mai i te Karauna	11,664,000	10,914,000
80,000	Ngā huamoni ka tae mai	180,000	80,000
210,000	Ngā whiwhinga mai i wāhi kē	852,946	310,000
(8,620,686)	Ngā utu ki ngā kaiwhakarato mai	(7,411,305)	(6,841,777)
(6,411,047)	Ngā utu kaimahi	(5,798,040)	(7,323,404)
50,000.00	Te utu i te GST	50,000	50,000
(3,027,733)	Ngā kapewhiti more i ngā mahi whakahaere	(462,399)	(2,811,181)
NGĀ KAPEWHITI I NGĀ MAHI HAUMI			
Ka hua mai (ka pau atu) he moni i/(ki)			
(1,035,000)	Te hoko whare, rawa, taputapu	(2,222,187)	(200,000)
(300,000)	Te hoko huarawa whakawairua	(731,340)	(650,000)
(1,335,000)	Ngā kapewhiti more i ngā mahi haumi	(2,953,527)	(850,000)
NGĀ KAPEWHITI I NGĀ MAHI TAKAPŪTEA			
Ka hua mai (ka pau atu) he moni i/(ki)			
-	Ngā kapewhiti more i ngā mahi takapūtea	-	-
(4,362,733)	Te (hekenga)/pikinga more i ngā moniuka me ōna ritenga	(3,415,926)	(3,661,181)
9,459,049	Te moniuka me ōna ritenga i te timatanga o te tau	9,365,966	5,950,040
6,397,316	Te moniuka me ōna ritenga ā te mutunga o te tau	5,950,040	2,288,859
6,397,316	E whakakitea ana ki: Te moniuka me ōna ritenga	5,950,040	2,288,859

Te tauākī o ngā kaupapahere kaute

► He hinonga tāpae pūrongo

I runga anō i te tautuhi a te Ture Hinonga Karauna 2004, he hinonga Karauna Te Taura Whiri i te Reo Māori. Kei Aotearoa mātou e noho ana, e mahi ana. Ko ngā ture e mātua tohutohu ana i ngā whakahaere a Te Taura Whiri i te Reo Māori, ko te Ture Hinonga Karauna 2004 me te Ture mō te Reo Māori 2016. Me kī ko te Karauna o Aotearoa te matua o Te Taura Whiri i te Reo Māori. Arā tā mātou whāinga mātāmua, ko te tuku ratonga ki te hunga tūmatanui o Aotearoa. Kāore mātou e whai kia hoki mai he hua taha moni ki a mātou i ā mātou nei mahi. Nā Te Taura Whiri i te Reo Māori tonu i whiriwhiri kia kīia ia he hinonga painga tūmatanui (PBE) mō te wāhi ki ngā mahi pūrongorongo pūtea. Ko ngā tauākī pūtea matapae mō Te Taura Whiri i te Reo Māori, e pā ana ki te tau ka eke ā te 30 o Pipiri 2024, ā, he mea whakaae e te Poari i te 30 o Pipiri 2023.

► Ngā tikanga whakarite tauākī pūtea

He mea whakarite ngā tauākī pūtea i runga i te whakaaro he whakahaere tūmau tēnei, ā, kua tairite te āhua o te whakahāngai i ngā kaupapahere kaute i te takanga haeretanga o te tau. He mea whakarite ngā tauākī pūtea a Te Taura Whiri i te Reo Māori i runga anō i ngā whakahau a te Ture Hinonga Karauna 2004, e mea ana me mātua ū ki ngā tikanga mahi kaute e whakaaetia whānuitia ana i Aotearoa (NZGAAP). He mea whakarite anō hoki ngā tauākī pūtea kia ū ki te Upane 2 o ngā paerewa mahi kaute PBE. E āhei ana mātou te whakahāngai i ngā paerewa o te Upane 2 i te mea he iti ake ā mātou whakapaunga i te \$30 miriona. E ū ana ngā tauākī pūtea nei ki te Ritenga Whākinga Māhaki o ngā Paerewa PBE.

► Ngā whakaaro tūāpapa

He mea whakarite ngā tauākī pūtea matapae i runga anō i ngā whakaaro tūāpapa e whai ake nei:

- › Ka whakahaerehia ētahi kaupapa whakatairanga nui hei whakamānawa i ōna anō ekenga nui mō te reo Māori, i te Wiki o te Reo Māori, me ngā Tohu Reo Māori.
- › Ka whakatutukihia ētahi kaupapa Maihi Karauna
- › Ka tohaina he tahua ki ētahi Kaupapa Maihi Karauna hei tautoko i te whakaoranga ake o te reo Māori.
- › E 63 ngā kaimahi wā-poha (ngā FTE) kua tohua kia taea e te pūtea (i tēnei wā e 57); ko ngā tūranga wātea, e hono ana ki ngā rā timata e whakaarohia ake ana.
- › Ko te takune mō tētahi wāhanga o te pūtea rangahau \$1.000 miriona ki ngā rangahautanga hou, kia pau ki ngā rangahautanga ka tūtohua tahitia e Te Taura Whiri i te Reo Māori me Te Mātāwai.

E mārāma ana Te Taura Whiri i te Reo Māori he mate kei roto i te whakahaere auroa i runga i te pūtea tarepa. I tēnei wā kei te whakamahia he taputapu whakatauirā matapae hei aroturuki i tēnei āhuatanga.

► Te momo moni whakaatu

Ko te tāra o Aotearoa te momo moni e whakaaturia ana ki ngā tauākī pūtea.

Te rūnātanga o ngā kaupapahere kaute tāpua

► Ngā whiwhinga

Ko te nuinga o ngā moni whiwhi a Te Taura Whiri i te Reo Māori, e takea mai ana i te Karauna. Ko te whakaatu i ngā whiwhinga whakawhiti-kore mai i ngā tahua, kei te āhua tonu o te kupu tohutohu (mehemea rā he kupu tohutohu) kei runga i te tahua mō te āhua o te whakamahi i tētahi huarawa ka whakawhiti.

Mēnā he 'here' te kupu tohutohu, me mātua whakahoki e te tangata i whiwhi i te tahua ngā moni i whiwhi rā ia ki te kore e whakapaua i runga tonu anō i tā ngā tohutohu i whakahau ai. Me te aha, ka whakaaturia hei taunahatanga, he taunahatanga ka kīia he whiwhinga whakawhiti-kore ā te wā e ea ai ngā 'here'.

Mēnā he 'whakatina' te kupu tohutohu, ehara i te mea me mātua whakahoki e te tangata ngā moni i whiwhi rā ia ki te kore e whakapaua i runga tonu anō i tā ngā kupu tohutohu i whakahau ai. Me te aha, kāore e whakaaturia hei taunahatanga whakawhiti-kore; ka kīia tonutia atu he whiwhinga whakawhiti-kore.

He tohutohu kei runga i ngā whiwhinga e tae mai ana ki Te Taura Whiri i te Reo Māori, e mea ana me whakapau anake ki te whakatutuki i ngā whāinga kua āta tohua i te ture nāna Te Taura Whiri i whakatū, me ngā mea e whakaetia ana mō taua pūtea, e ai anō ki te kaituku mai.

Ki tā Te Taura Whiri i te Reo Māori, kāore he 'here' i runga i ngā moni ka tae mai ki a ia, nō reira ka kīia tonutia atu he whiwhinga i te wā e tika ana kia tae mai.

Ko te wāriu tōkeke o ngā moni whiwhi mai i te Karauna, kua whakataua iho e taurite ana ki ngā rahinga i tohua rā i ngā whakaritenga tuku pūtea.

► Ngā huarawa taha pūtea

Ka uru mai ki te moniuka me ōna ritenga ngā moni kei te ringa, ngā moni whiti, ngā moni kei te pēke me ngā moni haumi e toru marama iti ake rānei te roa e eke ai te haumitanga. He mea whakaatu ngā moni haumi ki te utu i

hokona mai ai, ki te wāriu rānei me i hokona atu – ko te mea iti ake o rāua. Ki te whakaheke te wāriu, ka whakaaturia tēnei ki te tauākī o ngā whiwhinga whānui. E whakaetia ana kua waimaero tētahi nama kia utua mai ina āta kitea e kore e riro mai i Te Taura Whiri i te Reo Māori ngā moni e tika ana i runga i ngā whakaritenga tuatahinga mō taua nama. Ko te nui o te waimaerotanga, ko te rerekētanga i waenga i te wāriu kawē o te huarawa me te wāriu mēnā ka hurihia hei moniuka.

► Ngā huarawa ōkiko

Koia ēnei ko ngā whakapaipaitanga whare rihi, ngā waka, ngā taonga me ngā tautara noho whare, ngā taputapu tari me ngā taputapu ICT. Ko te wāriu o ēnei ka tuhia tuatahitia, ko te utu i te hokonga mai. Ki te riro mai he huarawa mō te kore utu, mō te utu tino iti rānei, ka meahia ko tōna wāriu, ko te wāriu tōkeke i te wā i riro mai ai.

► Te hekenga wāriu

He mea tātaitai te hekenga wāriu o ngā huarawa ōkiko i runga i te tikanga rārangi torotika, e tohaina ai te utu o tēnā, o tēnā ki te roanga o ngā tau e whakaetia ana ka toiora ia. Kia eke aua tau, kua noho wāriu kore taua mea. Anei ngā whakatau tata mō ngā tau e toiora ana tēnā me tēnā karangatanga rawa, me ngā pāpātanga whakaheke wāriu e hāngai ana:

- › whakapaipai whare rihi – rima tau, 20 ōrau
- › taonga, tautara noho whare – rima tau, 20 ōrau
- › taputapu tari – rima tau, 20 ōrau
- › taputapu ICT- whā tau, 25 ōrau
- › waihiko rorohiko – whā tau, 25 ōrau

► Ngā hua whakawairua

Ko ngā waihiko rorohiko kāore e noho tāhuhu mai ki te whakahaeretanga o ngā rorohiko, ka whakaaturia hei huarawa whakawairua. Ka tuhia ko te utu i riro mai ai, i tika ai te mahi, ā, ko te āhua o te whakaurupā, he rārangi torotika e whā tau te roa. Ko ngā utu o te tiaki, o te whakatika i ngā pūmanawa rorohiko, ka whakaaturia hei whakapaunga ā te wā e ara ake ai.

► Ngā hanga whakanao pūtea

He whakamahi tonu Te Taura Whiri i te Reo Māori i ētahi hanga whakanao pūtea i roto i āna whakahaere o ia rā. Koia ēnei, ko: ngā pūtea pēke, ngā nama mai, ngā nama atu, me ngā whakapipitanga. Ka whakaatanga ēnei ki te tauākī tūnga pūtea, ki te wāriu tōkeke o tēnā, o tēnā. Ko ngā whiwhinga me ngā whakapaunga ki ngā hanga whakanao pūtea, ka whakaaturia ki te tauākī whakahaere pūtea. Me he kurutete whakawhiti pūtea rāwaho, ka whakawhitia i runga i ngā pāpātanga whakawhiti e hāngai ana ki tēnā, ki tēnā. Karekau ā Te Taura Whiri i te Reo Māori tahua moni rāwaho.

► Te Tāke Hokohoko

Kua tuhia ngā tauākī pūtea me te kore e noho mai o te tāke hokohoko ki roto, hāunga anō ngā nama kia utua mai me ngā nama kia utua atu – e mau mai ana te tāke hokohoko ki ērā.

► Ngā paihere

Ko ngā utu kei tua, ka whākina hei paihere ā te wā e ara ake ai te here kirimana, i runga i te mea kāore anō i ea ngā kawenga i ngā taha e rua. Kāore e whākina ngā paihere mō te wāhi ki ngā kirimana kaimahi.

► Ngā rihitanga

Kei te rīhi Te Taura Whiri i te Reo Māori i tōna whare me ētahi o āna taputapu tari. I te mea kei te kaituku ngā mōreareatanga me te rangatiratanga o ēnei hanga rīhi, ka kīia ēnei he rīhi whakahaere. Ka tohua ngā utu rīhi whakahaere hei whakapaunga i te takiwā e ara ake ai.

► Te tāketanga

He mana tūmatanui Te Taura Whiri i te Reo Māori kāore e mate ki te utu tāke mō āna whiwhinga moni.

► Ngā tāpuitanga mō ngā whakawhiwhinga kaimahi

Ka mauhangatia te whakatā ā-tau kia hāngai pū ki te maha o ngā rā e tika ana kia rato ki te kaimahi i mea wā, i mea wā, i runga anō i te pāpātanga utu e hāngai ana i taua wā.

► Te tauākī kapewhiti

Ko te 'moni' e tohua ana i tēnei tauākī, ko ngā moni kei te ringa, kei te pēke, kei ngā pūtea tono noa, me ētahi atu moni haumi e māmā noa ana te tiki atu, he mea whakarite e Te Taura Whiri i te Reo Māori mō āna mahi tiaki pūtea o ia rā. Ko ngā mahi whakahaere, ko ngā mahi katoa, atu i ngā mahi haumi me ngā mahi takapūtea. Ko ngā moni mai, ko ngā moni ka tae mai i te hokonga atu o te taonga, o te ratonga, me ērā atu puna moni e tautoko ana i ngā mahi whakahaere a Te Taura Whiri i te Reo Māori. Ko ngā moni atu, ko ngā utu kaimahi, utu kaituku taonga mai, ratonga mai, me ngā tāke. Ko ngā mahi haumi, ko ērā e riro mai ai, e riro atu ai rānei ngā oati utu e wātea ana me ērā kāore i wātea, tae atu ki ērā atu huarawa he here kei runga. Ko ngā mahi takapūtea, ko ērā e pā ana ki te rerekē haere o te hanga haupū rawa – taha tūtanga, taha taha noho nama – a Te Taura Whiri i te Reo Māori, me ngā mahi e hāngai ana ki te utu o te whakaea i te haupū rawa tūtanga o Te Taura Whiri i te Reo Māori.

► Te tohanga o ngā utu

Kua oti i Te Taura Whiri i te Reo Māori te utu o ngā huanga te whakatau i runga anō i te pūnaha tiritiri utu i raro iho nei.

► Ngā paearu mō ngā utu arorangi

Ko ngā utu arorangi, ko ngā utu i ahu katoa mai i te huanga kotahi.

► Ngā paearu mō ngā utu kihai i arorangi

Ko ngā utu kihai i arorangi me ngā utu tukupū rangatōpū, ko ngā utu kāore e taea te āta pare atu, i runga i tētahi tikanga ohaoha whai takenga, ki te huanga kotahi. Ka tohua kētia ki ngā huanga i runga i te ōrau o ngā tūnga wā-poha kua tohua ki tēnā, ki tēnā huanga.

**TE TAURA WHIRI
I TE REO MĀORI**

MĀORI LANGUAGE COMMISSION



tetaurawhiri.govt.nz