

TE TAURA WHIRI
I TE REO MĀORI

MĀORI LANGUAGE COMMISSION



Te Pūrongo ā-Tau

2021–22



Kei te Minita Whanaketanga Māori, Te Hōnore Willie Jackson

Nei rā te mihi kau atu ki a koe.

He rekanga manawa e tāpaea atu nei te
pūrongo ā-tau a Te Taura Whiri i te Reo Māori
mō te tau i eke i te 30 o Pipiri 2022.



Ahorangi Rawinia Higgins
Toihau



Charisma Rangipunga
Toihau Tuarua

He Whakapā Mai

Te wāhi e tū nei tō mātou whare:

Papa 11, Kiwiwealth House
20 Te Ara o Ballance
Te Whanganui-a-Tara 6011
AOTEAROA

Ngā kōrero poutāpeta:

Pouaka Poutāpeta 411
Te Whanganui-a-Tara 6140
AOTEAROA

Waea: +64 4 471 0244

Īmēra: info@tetaurawhiri.govt.nz

Wāhitau ipurangi:
www.tetaurawhiri.govt.nz

Kaiarotake:

Mana Arotake Aotearoa
Te Whanganui-a-Tara
AOTEAROA (Mā te Tumuaki o te
Mana Arotake)

Pēke:

ASB Business
Papa 15, Kokonga o Jervois me Hunter
Pouaka Poutāpeta 11966
Te Whanganui-a-Tara
AOTEAROA
Waea: +64 4 499 4915

ISSN 2382-2112 (Taura pepa)

ISSN 2382-2120 (Taura tuihono)



He mea raihana te hanga manatārua nei i raro i te raihana o Aotearoa mō te Creative Commons Attribution 3.0. Me kī pēnei ake, e āhei ana koe te tārua, te tohatoha, te raweke kia iti nei i ngā tuhinga, engari me mātua whakaatu nā te Karauna ngā kōrero, ā, me mātua ū anō ki ērā atu here o te raihana. Hei tiroiro i tētahi taura o te raihana, haere ki <http://creativecommons.org/licenses/by/3.0/nz/>. Kia mōhio mai anō koe, kāore e whakaaetia tētahi whakamahinga waitohu tari, waitohu kāwanatanga rānei e takahi ana i ngā whakaritenga o te Flags, Emblems, and Names Protection Act 1981. Ko te whakaatu nā Te Taura Whiri i te Reo Māori, me tuhi ā-kupu rawa, kua e tāruatia noatia ngā waitohu o Te Taura Whiri i te Reo Māori.



Te Kāwanatanga o Aotearoa
New Zealand Government



Ngā Ihirangi

3 He kupu nā te Toihau

4 He kōrero nā te Tumu Whakahaere

8 Te Taiao Rangatiratanga

10 Te Anga Putanga

12 Te Whakatairite ki te
Tauāki Whakamaunga Atu

17 Te Tauāki Koronga mō
ngā Mahi kia Tutuki

19 Ngā Pūngao Puta

Te Whakatairite ki te Tauāki Koronga
mō ngā Mahi kia Tutuki

19 Te whakapakari ake i te Maihi Karauna
hei tautoko i te Whare o Te Reo Mauriora

23 Te whakapiki i te tokomaha o ngā
Aotearoa e maimoa ana i te reo Māori,
kia ākona ai, kia kōrerotia ai hei wāhi
nui o tō tātou tuakiri ā-motu

31 Te waihanga me te whakatairanga rauemi
hei tautoko i te whakamahere, te ako me
te whakamahi i te reo Māori

37 Te oke kia mau tonu te kounga o
te reo Māori

41 Te hauora me ngā pūkenga tara ā-whare

42 Te Taiao e Mahi Nei Mātou

48 Te Mana Arataki

49 Ngā Pārongo mō te Ū ki
ngā Whakahau

50 Te Tauāki Whakahaere

52 Te Pūrongo a te Katātari Motuhake

55 Te Tauāki Noho Haepapa





He kupu nā te Toihau



“Mō te whawhai hei painga mō te reo Māori, ko mātou pea tēnā, ko te matakahi iti e pakaru rikiriki ai te tōtara”

Ehara ko te reo anahe te mea e whanake ana i ngā mahi whakaora ake i te reo Māori: kei te whanake anō ko tō tātou Aotearoatanga.

Nō te huakanga o te kōhanga reo tuatahi i te 40 tau ki muri, he tino tokoiti ngā tamariki Māori kōrero Māori. Taka mai ki taua wā, ko ō tātou kaumātua kuia ēnā e kaha whawhai ana mō te reo Māori. Heoi anō, nō te 1982, ka uru ko ā tātou mokopuna ki te kakari.

Ko ngā akoranga nui o ngā kaupapa nei, o te kōhanga reo me te kura kaupapa, he wharau reanga maha te whakarauora reo. E kore e oti i te pō kotahi; he wharau roa, kā pā ia nei ko te oma poto noa.

He māia, he mātātoa ā mātou nei whāinga, pērā anō me ā ngā tūpuna. Ko te wawata o te Maihi Karauna 'kia māhorahora te reo – ahakoa anō te wāhi, te kaupapa, te tangata, te wā', e whakamau atu ana ki te tau 2040. E whā ngā karere tiketike o te wawata nei:

- › Nō tātou te reo Māori
- › Kia mauri ora te reo
- › He waka reo, he waka eke noa
- › Arohatia te reo

E ai ki te uinga a Kantar i muri tonu i Te Wiki o te Reo Māori 2021, e 8 o roto i ia 10 tāngata o Aotearoa e whakaae ana ko te reo tētahi wāhanga o tō rātou tuakiri ā-motu. Waihoki, ko tā ngā raraunga a Tatauranga Aotearoa i tohu mai ai, kua tata ki te kotahi o roto i te tokowhā o ngāi Māori i Aotearoa, he mōhio ki te kōrero Māori.

I te tau kua hipa, kua arotahi tonu te tokomatua iti i Te Taura Whiri i te Reo Māori ki te whakaohoho, ki te whakaawe, ki te whakakori i te motu. Ko ngā tari kāwanatanga ēnā kua tāpae i ā rātou mahere hei whakatairanga i te reo i roto i ā rātou mahi katoa; ko te tuku raihana whakamāori ā-tuhi tēnā ki te tokopae nui katoa ā moroki noa nei; ko tō mātou whakawhiwhinga tēnā ki te tohutoa o te ao mō te whakawhanaunga tūmatanui. Mō te whawhai hei painga mō te reo Māori, ko mātou pea tēnā, ko te matakahi iti e pakaru rikiriki ai te tōtara.

Ki a tātou, ngāi Māori mā, ko te reo te taukaea e hono ana i a tātou ki ō tātou tūpuna, ki tō tātou ahurea, ki ngā āhuatanga tuku iho. Ki a tātou, ngāi Aotearoa whānui, ko te reo te mea e noho huānga ai tātou ki tēnei whenua, ki tēnei kāinga o tātou. Pērā anō i te aranga ake o te kōhanga reo i te 1982, i te tau 2022 nei, ko te mātātahi anō kei mua e taki ana i te huringa o te reo Māori hei hanga māori noa, e hāpai ana, e kōrero ana anō hoki i te reo Māori.

Professor Rawinia Higgins

Toihau/Chairperson





He kōrero nā te Tumu Whakahaere



“Ko te mea pai katoa, e whakaata ana mātou i te hāngai tonu o ngā mātauranga onamata ki te ao o nāianei; inā te whaihua o te mātauranga Māori ki ngā take o ēnei rā.”

E ōku rangatira, tēnā koutou katoa.

Ko te amorangi ki mua; ko te hāpai ō ki muri. Ko te pūtake o tēnei whakatauki, ko te mōhio e whakaata kē ana ngā kaihautū i ngā mahi e mahia ana e ngā tāngata tū i muri tonu i a rātou. Ko tētahi ‘kōrero whakakata’ āku, heoi anō tāku, tā te Tumu Whakahaere, he inaina i te hana o ngā mahi e tutuki ana i aku kaimahi. Ka mutu he tika te kōrero. Awahi atu, awahi mai, awe atu, awe mai, kei reira kē te kaha o te kāhui.

Ko tō mātou angitu, kua takea mai i te anga me te ahurea kua waihangatia e mātou ko taku kāhui whakahaere matua – koia tēnei ko Te Amorangi ki Mua. Engari he pērā tonu anō te hirahira o te mana, te waiaro me te kounga o ngā mahi e oti ana i ngā kaimahi – ko rātou ēnā ko Te Hāpai Ō ki Muri. Ka mahi tahi ana mātou, ka tukutuku whakaaro, pūkenga, hei reira tutuki ai ngā auahatanga panoni e tika tonu ai ngā ratonga i ēnei wā o te uaua. Koia nei hoki te whāinga a ngā pakihi katoa i ēnei tau tata nei ka hori.

Ko te tūāpapa o angitu i tēnei whakahaere a mātou – me ngā hononga i waenga i ngā kaiārahi me ō rātou nā kāhui – ko te whakapono. Ki a mātou, he pūkenga tonu te tokomatua o konei; e whakapono ana mātou ka āta whakamahia ō rātou mātauranga me ō rātou pūkenga kia eke panuku ai ngā mahi. Hei whakatauiru atu, ko Te Toko Reo, mā rātou ngā whakatau matua mō ā mātou kaupapa whakatairanga, i runga anō i

ngā raraunga kua kohia e rātou. Waihoki Te Pūtahi Rangahau, mā rātou e whakatau ko wai mā ki ngā paewhiri tuku kirimana, ka pēwhea rānei te whakahaere i ā mātou arotake tara ā-whare. He pēnei i te marae nei, he tūranga anō mō te katoa. Kei te mōhio hoki, ko ngā kaimahi kua roa e tū tapatahi ana ki tō mātou whare, kāore e kore ka matatika ā rātou whakatau, he whakapono nō rātou ki te ahurea e whai wāhi mai nei rātou i ia rā.

Ko ēnei uara e hāpainga tahitia ana kei te whakapakari i te haere pātui a ngā kaimahi me ngā kaiārahi. Ko ngā kaiārahi kei te tohu i ngā whāinga tiketike mō ngā mahi, ko ngā kaimahi kei te tiaki i te whakatinanatanga. Me te aha anō, e mārāma pai ana, e whakaute ana Te Amorangi ki Mua me Te Hāpai Ō ki Muri i te wāhi nui ki tērā atu o rāua e tino ora ai tō mātou whare.

E whakatūturu ana mātou i te hira o ngā pātuinga rautaki, mā te titiro ki tua o te mahi kotahi; e mōhio ana mā te poi poi i ngā taura tangata auroa e koke ai ā mātou whāinga roa me te wawata nui mō te reo Māori hei ngā rā ki tua. Ko te mea pai katoa, e whakaata ana mātou i te hāngai tonu o ngā mātauranga onamata ki te ao o nāianei; inā te whaihua o te mātauranga Māori ki ngā take o ēnei rā.

Ko te pōkēao nui kua tāmaru i te rua tau kua pahure ake nei, ko KOWHEORI-19. Nāna ko te noho mauhere ki te whare, ko te rongu hoki i te taumaha o ngā pikaunga mahi i whakaritea i mua o te urutā,



me te ngaro anō mō tētahi wā o te tokomaha o ngā kaimahi i te ngau a Korona. Ka toitū tonu ā mātou whāinga mō te reo Māori, engari ko te ao kua panoni, ā, kua mate hoki ko mātou ki te panoni, e tūwhitia ai ngā whakararu, e eke panuku ai ngā koronga.

Ka mutu me kōrero ka tika te eke tangaroa o ngā mahi i Te Hāpai Ō ki Muri!

- › Kotahi miriona ngahoro o ngāi Aotearoa i rēhita mai, i whai wāhi mai – anō – ki Te Wā Tuku Reo Māori
- › E ono tekau mā ono ngā tāngata i puta ā-ihu i te whakamātautau kaiwhakamāori ā-tuhi – kātahi anō ka pēnei rawa te nui.
- › E ai ki te Pūrongo ā-Tau mō te Maihi Karauna, i pahika te tutuki o ngā putanga mō te poipoi i te reo Māori i te ratonga tūmatanui i tā ngā mahere a tēnā, a tēnā i tohu ai
- › Kei te tupu tonu te kaha o te Taituarā Maihi Karauna; e pai ana te titikaha me te kōrerorero tahi a ngā kaiwhakahaere matua o te ratonga tūmatanui
- › E haere tonu ana tā mātou whakakaha ake i ā mātou pae tuihono; mā konei tonu hoki e huihui tahi ai ōna anō whakaminenga i ngā wā tē taea ngā whakarauikatanga ā-tinana.

Ko ēnei tūmomo putanga te hua o te hōtaka mahi me te ahunga rautaki i whakaritea māiretia kia kōpuni Te Amorangi ki Mua me Te Hāpai Ō ki Muri. He kōrero atu anō mō ā mātou mahi me ngā tutukinga kei te roanga atu o te pūrongo nei.

Kei whea he wā pai ake i tēnei hei āta tuku mā te Tumu Whakahaere tino waimarie nei i tāna mihi nui, i tōna aroha nui ki te tokomatua mutunga mai o te pai. Me i kore tō rātou manawa rahi me ō rātou pūkenga nui, kua kore i tutuki ngā mahi o te tau kua hipa – me te whā tau anō o mua atu i tērā. Tēnā koutou katoa. Nō te reo te whiwhi, mō te reo te take.

Kia kaha te reo Māori!

Nāku noa, nā

Ngahiwi Apanui

Tumu Whakahaere



1,451,842

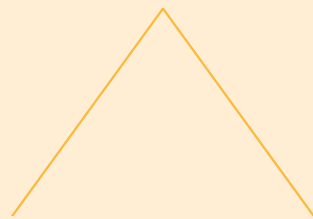
te tokomaha i whai wāhi mai
ki ngā kaupapa reo Māori

1,245,760

ngā rauemi i tirohia,
i kapohia



NGĀ MEA HIRAHIRA O TE TAU 2021-22



66

ngā kaiwhakamāori
ā-tuhi, ā-waha hou
kua whakamanaia.



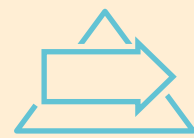
93

ngā tāngata
i uru ki ngā
whakangungutanga
o Te Toi Reo Māori.



155

ngā tāngata i
uru mai ki ngā
whakamātautau o
Whakamātauria tō
Reo Māori.



83%

o te hunga i whai wāhi ki
Te Toi Reo Māori, e mea
mai ana kua koni whaka-
te-ao-mārama rātou.



PHOTOWELLINGTON



He Toki

I te Pipiri ka hinga i Te Wānanga o Raukawa Pulse ngā Stars, 56-37 te tapeke, i te Whakataetae ANZ. Ko te toanga tuatorutanga tēnei o te Pulse i te whakataetae nei, ko ia anō te kapa tuatahi kua pērā. He pātuinga auroa tō Te Taura Whiri i te Reo Māori rāua ko Te Wānanga o Raukawa Pulse, ā, e tautokona ana rātou mā roto i te Pūtea Kaupapa Maihi Karauna.



30

ngā pūtahi
kāwanatanga i uru
ki ngā papamahi
whakarite mahere reo.



82

ngā karahipi i tukuna
ki ngā ākonga e kawea
ana i te reo Māori.



91%

o ngā pūtahi e mea mai
ana he āwhina nui ki ā
rātou, ā mātou taputapu,
kupu āwhina hoki.



48

ngā kaupapa
i poipoia.



Te Taiao Rangatiratanga

Te Maihi Karauna

He Pārongo mō te Rohenga Pūtea

E takea mai ana ngā moni a Te Taura Whiri i te Reo Māori i te Rohenga Pūtea: Whanaketanga Māori, i raro i tēnei karangatanga tutukinga:

- › Whakarauora Reo mō te Motu
 - te tautoko i te whakaoranga ake o te reo Māori ki te motu nui tonu, me te whakahaere i Te Taura Whiri i Te Reo Māori.

Ko te tikanga, mā tēnei rohenga pūtea e taea ai te reo Māori te āta whakatairanga, te āta rauhi me te āta whakaora ake, mā roto mai i:

- › ngā mahi tautini a Te Taura Whiri i te Reo Māori
- › te whakatutukinga o tētahi hōtaka rangahau e taupua ana i ngā mahi whakaora i te reo Māori
- › Te Maihi Karauna (Te Rautaki Reo Māori a te Karauna)
- › ētahi atu kawenga i raro i te ture me mātua kawea ake e Te Taura Whiri i te Reo Māori.





Te Anga Putanga

Te arorau wawaotanga 2020–24

Ko ngā tohuine tutukinga mō ēnei putanga kei tā mātou Tauākī Whakamaunga Atu 2020–24, whārangi 12–16, me tā mātou Te Tauākī Koronga mō ngā Mahi kia Tutuki 2021–22, whārangi 18–26. Kei te tūtohi e whai ake nei ngā whāinga tiketike.



I ahu mai i ngā Whāinga Maihi Karauna



Te Whakatairite ki te Tauāki Whakamaunga Atu



TE TAKUNE RAUTAKI

01

Te whakapakari i te Maihi Karauna hei tautoko i Te Whare o Te Reo Mauri Ora

NGĀ PĀTOHU



KUA OTI



KOIA TE HĀNGAITANGA

TE WHĀINGA ANGITU MŌ TE WHĀ TAU[†]:

Kia kaha ake te kitea me te kōrerotia
o te reo Māori i ngā ratonga tūmatanui

Arotahinga	Tohuine	Keonga, Pūrongoatanga	E Pēheatia Ana
Kia nahanaha te āhua o ngā mahi whakaora ake i te reo Māori	Te piki o te ōrau o ngā tari Ratonga tūmatanui me ngā pūtahi ā-tari (e 35*) kei te whakatakoto mahere reo	25% i te 2020–21 Ka piki ki te 100% i te 2020–21 Ka piki ki te 100% ā te 2021–22	
	Te piki o te ōrau o ngā pūtahi rāngai kāwanatanga (āhua 200 nei) ka whakatakoto mahere reo	>1% i te 2020–21 Ka piki ki te 20% ā te 2023–24	**
	Te maha ake o ngā taputapu hei ine i te pānga, hei arotake hoki i ngā mahere reo	He mea whakarite te paeraro i te 2020–21 Ka 50% te piki i te 2023–24	
Kia whakatauirahia te hautūtanga o ngā mahi whakarauora reo (mā roto i Te Papa Kōrero)	Te maha o ngā pūtahi tātaki kua whai mahere reo	100% i te 2020–21	
	Te piki o te ōrau o ngā kaupapa whakaora ka kawea ngātahitia e ētahi pūtahi	He mea whakarite te paeraro i te 2020–21 Ka 25% te piki i te 2023–24	
Ko ā mātou taputapu, kupu āwhina, tautoko mō te whakamahere reo, kua āwhina i ngā pūtahi ki te whakariterite i ā rātou mahi whakaora reo	Te ōrau o ngā pūtahi e ki mai ana he āwhina tonu ngā taputapu me ngā kupu āwhina a Te Taura Whiri i te Reo Māori	He mea whakarite te paeraro i te 2020–21 Ka piki ki te 75% ā te 2023–24	
Ko te koni whaka-te-ao- mārama (mai i te Kore ki te Pō, mai i te Pō ki te Awatea)	Te ōrau o ngā pūtahi ka ine i te koni whaka-te-ao-mārama, nā runga i ā rātou mahi whakarauora i te reo Māori	He mea whakarite te paeraro i te 2020–21*** Ka piki ki te 75% ā te 2023–24	

[†] Kua whakaataria ngā whāinga angitū whā-tau hei tauāki papānga i te pou tarāwaho putanga kei te whārangi 11 o tēnei pūrongo ā-tau.

* I te 30 Pipiri 2022, e 32 ngā tari. Takenga: [New Zealand's central government organisations](#)

** I te 30 Pipiri 2022, e 48 ngā pūtahi rāngai kāwanatanga kua whakatakoto mahere reo.

*** Nō te tau 2021–22 i whakawhanake ai ngā paepito ine whaka-te-ao-mārama, ā, kua whakaurua ki Te Tauāki Koronga mō ngā Mahi kia Tutuki. Tirohia te tuhipoka mō te Tauira KoPA ki w.18 o tēnei pūrongo ā-tau.

TE TAKUNE RAUTAKI

02

Te whakapiki i te tokomaha o ngā Aotearoa e maimoa ana i te reo Māori, kia ākona ai, kia kōrerotia ai hei wāhi nui o tō tātou tuakiri ā-motu

NGĀ PĀTOHU



KUA OTI



KOIA TE HĀNGAITANGA

TE WHĀINGA ANGITU MŌ TE WHĀ TAU[†]:

Te whakapiki i te tokomaha o ngā Aotearoa e maimoa ana, e kōrero ana i te reo Māori.

Arotahinga	Tohuine	Keonga, Pūrongotanga	E Pēheatia Ana
Kia kaha ake te maimoatia o te reo Māori	Te maha ake o ngā whakahaere i te rāngai tūmataiti me te hapori e maimoa ana, e whakatairanga ana, e whakamahi ana i te reo Māori	<50 i te 2020–21 Ka piki ki te 200 ā te 2023–24	
Kia tokomaha ake ngā pākai reo Māori	Te maha ake o ngā taura ka whiria ki te hunga whai pānga mai	He mea whakarite te paeraro i te 2020–21 Ka 50% te piki i te 2023–24	
Kia tāpua ake te reo Māori	Te maha o ngā kaupapa whakatairanga – i te ao tuihono, i te ao kikokiko – e tautokona ana e Te Taura Whiri i te Reo Māori	He mea whakarite te paeraro i te 2020–21 Ka piki ki te 50% ā te 2023–24	
Ko te koni whaka-te-ao-mārama (mai i te Kore ki te Pō, i te Pō ki te Awatea)	Te ōrau o ngā whakahaere kua tautokona kei te mea mai kua koni whaka-te-ao-mārama rātou	He mea whakarite te paeraro i te 2020–21*** Ka piki ki te 75% ā te 2023–24	

[†] Kua whakaataria ngā whāinga angitū whā-tau hei tauāki papānga i te pou tarāwaho putanga kei te whārangi 11 o tēnei pūrongo ā-tau.

*** Nō te tau 2021–22 i whakawhanake ai ngā paepito ine whaka-te-ao-mārama, ā, kua whakaurua ki Te Tauāki Koronga mō ngā Mahi kia Tutuki. Tirohia te tuhipoka mō te Taura KoPA ki w.18 o tēnei pūrongo ā-tau.

TE TAKUNE RAUTAKI

03

Te waihanga me te whakatairanga rauemi tautoko i te whakamahere, te ako, me te whakamahi i te reo Māori

NGĀ PĀTOHU



KUA OTI



KOIA TE HĀNGAITANGA

TE WHĀINGA ANGITU MŌ TE WHĀ TAU[†]:

Kia hāngai ake, kia tuawhiti ake, kia matahuhua ake ngā rauemi

Arotahinga	Tohuine	Keonga, Pūrongotanga	E Pēheatia Ana
Kia wātea ake ngā kupu (kua oti te tiroiro, te whakaae) hei tautoko i te rere o te reo Māori	Te maha ake o ngā kupu, kiānga hou, e taea ai ngā āhuatanga whāiti me ngā kaupapa hou te kawē ki te reo Māori	200 i te 2020–21 Ka piki ki te 1,000 ā te 2023–24	
	Te whakakotahi i te puna kupu whānui	E rua ngā rārangi kupu ehara i Te Taura Whiri i te Reo Māori i waihanga, ka uru mai i mua i te 2023–24	
He rauemi āwhina i te tangata ki te whakamahere, ki te ako, ki te kōrero i te reo Māori	Te ōrau o ngā kaiwhakamahi e mea mai ana i āwhina tonu ngā rauemi i a rātou ki te whakamahere, ki te ako, ki te kōrero i te reo Māori	He mea whakarite te paeraro i te 2020–21 Ka piki ki te 75% ā te 2023–24	
	Te maha o ngā kaupapa rangahau, arotake ka tonoa	E rua i te 2020–21 Ka 100% te piki i te 2023–24	
	Te ōrau o ngā rauemi ka tirohia, ka kapohia	He mea whakarite te paeraro i te 2020–21 Ka 20% te piki i te 2023–24	
Ko te koni whaka-te-ao-mārama (mai i te Kore ki te Pō, i te Pō ki te Awatea)	Te ōrau o ngā kaiwhakamahi e ine ana, e mea mai ana hoki kua koni whaka-te-ao-mārama rātou nā rungā i tā rātou whakamahere, ako, kōrero anō hoki/rānei i te reo Māori	He mea whakarite te paeraro i te 2020–21 ^{***} Ka piki ki te 75% ā te 2023–24	

[†] Kua whakaataria ngā whāinga angitū whā-tau hei tauākī papānga i te pou tarāwaho putanga kei te whārangi 11 o tēnei pūrongo ā-tau.

^{***} Nō te tau 2021–22 i whakawhanake ai ngā paepito ine whaka-te-ao-mārama, ā, kua whakaurua ki Te Tauākī Koronga mō ngā Mahi kia Tutuki. Tirohia te tuhipoka mō te Taurira KoPA ki w.18 o tēnei pūrongo ā-tau.

TE TAKUNE RAUTAKI

04

Te oke kia mau tonu te kounga o te reo Māori

TE WHĀINGA ANGITU MŌ TE WHĀ TAU[†]:

Kia tairite ake, kia tuawhiti ake te reo Māori

NGĀ PĀTOHU



KUA OTI



KOIA TE HĀNGAITANGA

Arotahinga	Tohuine	Keonga, Pūrongoanga	E Pēheatia Ana
Kia kaha ake te taupua i te reo Māori e hāngai ana ki ēnei rā	Te tokomaha ake o ngā kaiwhakamāori ā-tuhi, ā-waha kua whakamanaia, e kawē ake ana i ngā mahi whakamaori	58 i te 2020–21 Ka 20% te piki i ia tau ki te 2023–24	
	Te tokomaha e whakangungua ana ki Te Toi Reo Māori	He mea whakarite te paeraro i te 2020–21 Ka 30% te piki i te 2023–24	
Kia kaha ake te whakanuia o te matatau, te ako haere me te kōrero i te reo Māori	Te tokomaha ake e kawē ana i te whakamātautau Tohu Taumata me tō te Rāngai Tūmatanui Māori	136 i te 2020–21 Ka 30% te piki i te 2023–24	
	Te tāpua ake o ngā whakamātautau Tohu Taumata, Rāngai Tūmatanui Māori	E toru ngā kaupapa whakatairanga i te 2020–21 Ka 30% te piki i te 2023–24	
Ko te koni whaka-te-ao-mārama (mai i te Kore ki te Pō, i te Pō ki te Awatea)	Te ōrau o te hunga whakauru ki Te Toi Reo Māori e mea mai ana kua koni whaka-te-ao-mārama rātou	He mea whakarite te paeraro i te 2020–21 ^{***} Ka piki ki te 75% ā te 2023–24	

[†] Kua whakaataria ngā whāinga angitū whā-tau hei tauākī papānga i te pou tarāwaho putanga kei te whārangi 11 o tēnei pūrongo ā-tau.

^{***} Nō te tau 2021–22 i whakawanake ai ngā paepito ine whaka-te-ao-mārama, ā, kua whakaurua ki Te Tauākī Koronga mō ngā Mahi kia Tutuki. Tirohia te tuhipoka mō te Tauria KoPA ki w.18 o tēnei pūrongo ā-tau.

Te Tauākī Koronga mō ngā Mahi kia Tutuki



Te Tauākī Koronga mō ngā Mahi kia Tutuki

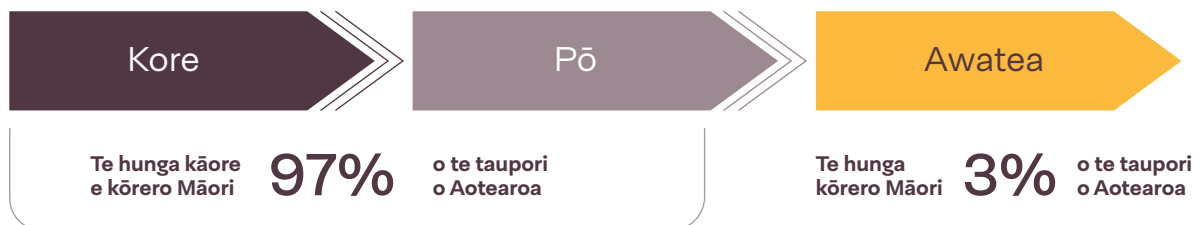
“I orea te tuatara ka puta ki waho”



Ko tā mātou Tauākī Koronga mō ngā Mahi kia Tutuki (SPE) e tautohu ana i ngā whāinga, ngā tohuine me ngā tutukinga e tika ana kia eke i mea tau, i mea tau. Ko te tau pūtea 2021–22 te tuarua kua pau ki te whakatutuki i ngā whāinga kei tā mātou Tauākī Whakamaunga Atu 2020–24.

Kei runga i a mātou me ō mātou hoa pātui o te rāngai tūmatanui te haepapa ki te whakatutuki i ēnei mahi, tae atu ki ō mātou hoa pātui o te Maihi Karauna, arā ki: Te Puni Kōkiri, Te Māngai Pāho, Whakaata Māori, Te Tāhuhu o te Mātauranga, Te Manatū Taonga me Te Tari Taiwhenua. Kei te pātui hoki mātou ki a ngāi Māori me ngā iwi Māori e whakakanohitia ana e Te Mātāwai, ki ngā whakahaere Māori, ngā kaupāho Māori, me ngā wharetuku mātauranga Māori.

TE ARA KŌRERO MĀORI: TE ARA KoPA – HIGGINS & REWI



Kua tikina e mātou te Taura KoPA* hei taputapu ine i ngā wāhanga aronga e whā e āta whakaatu ana he pēhea te neke Whaka-te-ao-mārama o te tūnga o tētahi tangata, hinonga rānei i te Kore ki te Pō ki te Awatea e whakapakari i te tūnga o te reo i roto i te iwi whānui. Mā te neke i te Kore ki te Pō e whakapiki te arokā ki te reo ka whānui ake hoki te tautoko mō te whakarauoratanga o te reo Māori, mā reira he māmā ake ki te whakatutuki i te neke whaka-te-ao-mārama nō muri mai i te Pō ki te Awatea.

Ko te whakamārama o te tūnga kore:

- › He tūnga nekeneke kore mō te taha ki te hāpaitanga o te reo Māori
- › He uaua te whakapikinga taumata
- › He uaua te kimi tāngata hei hoa kōrero, te whakamahi hoki i te reo Māori

Ko te whakamārama o te tūnga pō:

- › Ehara te reo Māori i te reo kōrero o ia rā, o ia rā, heoi anō, he pitomata ōna
- › Kei te āhua tautoko ngā waiaro i te whakamahinga o te reo Māori
- › Kua tīmata te tangata ki te ako me te whakamahi i te reo Māori, ahakoa iti, ahakoa māmā

Ko te whakamārama o te tūnga awatea:

- › He reo kōrero te reo Māori o ia rā, o ia rā
- › Kei te tino tautoko ngā waiaro i te whakamahinga me te kitenga o te reo Māori

Kei te whakamārama te whaka-te-ao-mārama i te nekehanga i te kore ki te pō ki te awatea. Me mōhio e taea ai te neke whaka-te-pō kē nā ngā wheako huakino, e whakaāhua ana i te nekehanga kē atu i te kōrerotanga māori noa o te reo Māori.

* Higgins, R. & Rewi, P., Indigenous Languages within the Entity, Language, Education and Diversity Conference paper, Auckland University, June 2011. (Zero – Passive – Active / Kore – Pō – Awatea)

Ngā Pūngao Puta

Te Whakatairite ki te Tauākī Koronga mō ngā Mahi kia Tutuki

01

Te whakapakari ake i te Maihi Karauna hei tautoko i te Whare o Te Reo Mauriora

Ngā mea i kī ai mātou ka tutuki i a mātou i te 2021–22

Ā mātou whāinga i tēnei arotahinga:

- › ki te tuku taputapu, kupu ārahi anō hoki ki ngā whakahaere rāngai kāwanatanga hei tautāwhi i a rātou ki te whakatinana i ā rātou mahere reo, ki te āta nanao atu me te pūrongo hoki i ngā pānga (tae atu ki ngā koninga whaka-te-Ao-Mārama).
- › ki te pūrongo i ia tau i te āhua me te whānui o ngā takoha ki te rautaki Maihi Karauna e whakamaheretia ana e ngā tari/pūtahi noho haepapa.

Ko te keonga mātāmua o tēnei whakaarotau rautaki, ko te rāngai tūmatanui.

NGĀ IA O MUA

SPE #	2019–20 Tuturu	2020–21 Tuturu
1.1	13%	91%
1.1a	–	Tohuine hou: 23
1.2	–	Tohuine hou: 24
1.3	–	Tohuine hou: 100%
1.4	–	Tohuine hou: 67%
1.5	–	Tohuine hou: 100%
1.6	–	Tohuine hou: Kāore i inea

2021–22 TUTUKINGA

Tohuine	Koenga	Tūturu	Tihoinga	Hononga ki te Anga Putanga
1.1 Te piki o te ōrau o ngā tari/pūtahi ratonga tūmatanui e 35* ka whakatakoto mahere reo	90%	91%	1%	Kia kaha ake te kitea me te rere o te reo Māori i te ratonga tūmatanui
1.1 a) † Te nui o ngā hinonga rāngai kāwanatanga kua tautokona ki te whakawhanake mahere reo.	20	20	Karekau	Kia kaha ake te kitea me te rere o te reo Māori i te ratonga tūmatanui
1.2 Te maha o ngā pūtahi rāngai kāwanatanga (o roto i tōna 200 nei) ka tae mai ki ngā papamahi whakamahere reo	24	30	6	Kia pai ake te taha whakamahere me te tautoko i te ako me te kōrerotanga o te reo Māori
1.3 Te maha o ngā pūtahi tātaki** kua whai mahere reo	7	7	Karekau	Kia kaha ake te kitea me te rere o te reo Māori i te ratonga tūmatanui
1.4 Te piki o te ōrau o ngā kaupapa whakamahere reo ka kawea ngātahitia e ōna anō pūtahi	4	4	Karekau	Kia pai ake te taha whakamahere me te tautoko i te ako me te kōrerotanga o te reo Māori
1.5 Te ōrau o ngā pūtahi e mea ana he āwhina tonu tā ngā taputapu, kupu ārahi a Te Taura Whiri i te Reo Māori i oti ai ā rātou mahere reo te whakatakoto	60%	93%	33%	Kia pai ake te taha whakamahere me te tautoko i te ako me te kōrerotanga o te reo Māori
1.6 Te ōrau o ngā pūtahi kei te inea, kei te pūrongo anō i ngā koni whaka-te-ao-mārama (mai i te Kore ki te Pō, mai i te Pō ki te Awatea) e hua ake ana i ngā mahi whakarauora reo Māori	80%	94%	14%	Kia pai ake te taha whakamahere me te tautoko i te ako me te kōrerotanga o te reo Māori

* Ko ngā pūtahi tāwhana tari pērā i Te Rākau Whakamarumarū, i Te Aho o te Kahu, i Te Tira Tiaki/Te Pā Marumarū, ka kiia he whakahaere kotahi. Hui katoa, e 29 o roto i te 32.

† Nō Ngā Whakapae Tahua: Tahua Whanaketanga Māori 2021–22 (Tāpiritanga). Tuhipoka: Hāunga ngā tari Tūmatanui i te Rāngai Kāwanatanga.

** Ko ngā pūtahi tātaki, ko Te Puni Kōkiri, ko Te Tari Taiwhenua, ko Te Manatū Taonga, ko Te Tāhuhu o te Mātāuranga, ko Whakaata Māori, ko Te Māngai Pāho me Te Taura Whiri i te Reo Māori



He Take Wānanga

Te Whakamahere Reo

▶ Te Horopaki

Nō te tau 2018 i tohutohungia[†] ai e te Kāhui Minita ngā tari ratonga tūmatanui katoa kia tārai Mahere Reo Māori i mua i te 30 o Pipiri 2021. Kua āwhinatia atu ēnei pūtahi e Te Taura Whiri i te Reo Māori kia tārai mahere mā roto mai i te whakatutukinga o te Maihi Karauna (te Rautaki Whakarauora Reo Māori a te Karauna).

▶ Te Ngakinga

Ki a mātou, ko taua tohutohu, he tiwha kia arotahi mātou ki ngā tari ratonga tūmatanui, kia tautāwhi i a rātou ki te whakatakoto mahere reo i mua i te paunga o te Pipiri 2021. I tutuki tonu tēnei, ahakoa te rerekē o ngā mea e mātua hiahia ana tēnā me tēnā whakahaere. Arā kē te arotahinga, ko te whiri taura tangata, i taea ai te tautohu ngā taupā me ngā hiahia ake o tēnā pūtahi, o tēnā pūtahi.

[†] Meneti a te Kāhui Minita CAB MCR-18-MIN-0012

► Te Hua

Ko te wāhi e tīmata ai ngā kaitārai mahere, ko te taukumekumenga o ngā āhuatanga ahurea me ngā āhuatanga whakahaere: e mārāma ana rātou ki te whāinga kia kaha ake te rere o te reo Māori, engari kāore pea i te whakapono ka taea e rātou ētahi panonitanga pūmau te whakatinana. Ina mārāma mātou ki ngā mea e whakararu ana i ia pūtahi, hei reira taea ai e mātou te tuku ngā taputapu me ngā rauemi hei whakaea i ō rātou hiahia. Ka mutu he auroa tā mātou tautoko atu; kia panoni haere te mahere reo me ngā pūkenga o tētahi pūtahi, ka panoni anō hoki te āhua o tā mātou tautoko atu. Nāwai ā ka ngākau hihiko ngā pūtahi, ka ngākau pai anō ki ā rātou mahere ake.

► Te Pānga

He mea nui te whakamahere reo i te rāngai tūmatanui i te mea e whai pānga ana ngā kirirarau katoa o Aotearoa ki te ratonga tūmatanui. E kauneke ana ōna anō mahere reo, ā, ahakoa e kitea atu ana ētahi tohu o te koni whaka-te-ao-mārāma – pēnei i ngā panonitanga i te reo tuku imēra, i ngā waitohu me ngā tohu tūmatanui reorua – ko te inenga kauawhi katoa o te pānga kua kite mātou i tēnei tau, kua puta ake i te tānga tatauranga mai i te tuatahi o ngā patapatai rāngai tūmatanui e kīia nei ko Te Taunaki. Koinei te inenga tīmatanga mō te tautoko me te kōrero i te reo Māori i waenga i tōna anō 40,000 kaimahi ratonga tūmatanui kei ngā pūtahi e 36 e mahi ana**.



MANA

(Status)



MĀRAMA PŪ

(Critical awareness)



AKO

(Acquisition)



PUNA

(Corpus)



WHAKAMAHI

(Use)

► Ki Tua

Mō ngā āhuatanga katoa o te whakamahere reo, kei ngā pūtahi tonu te whiriwhiri. Heoi anō tā Te Taura Whiri i te Reo Māori, he whakaawe, he whakatenatena, mai kore e panoni ngā whakahaere nei. E tau ai te angitu tautini ki ngā mahi whakamahere reo, me waihanga e tēnā, e tēnā whakahaere te anga e tū pai mai ai he toa tara ā-whare e titikaha ana ki te aroturuki, ki te arotake, ki te pūrongo i te tutuki haere o tā rātou mahere reo.

** Tirohia Te Taunaki | Public Service Census 2021 – <https://www.publicservice.govt.nz/research-and-data/workforce-data-maori-crown/>

► He whakarāpopotonga o ngā koringa ā-Maihi Karauna a ngā Hinonga 2020–21

E rārangi iho nei ngā kaupapa Maihi Karauna a ngā pūtahi, tae atu ki ā Te Taura Whiri i te Reo Māori, i te tau 2020–21.

Pūtahi	Reo & Rauemi*	Kapa Haka / Waiata / Karapu Reo	Te Wiki / Mahuru Māori	Kaihāpai Reo FTE kua Kopoua**	Ngā Taiutu***	Te whakauru ki te Mahere Tutukinga	Manhere Reo kua Rēhitatia
Hikina Whakatutuki	▲	▲	▲				▲
Te Papa Atawhai	▲	▲	▲				
Te Tari Ture o te Karauna	▲	▲	▲				▲
Te Manatū Taonga	▲	▲	▲			▲	▲
Te Mana Ārai o Aotearoa	▲	▲	▲				▲
Ara Poutama Aotearoa	▲	▲	▲		▲		▲
Te Manatū Kaupapa Waonga	▲		▲				▲
DPMC me NEMA	▲	▲	▲	▲			▲
Te Tāhuhu o te Mātauranga	▲	▲	▲		▲	▲	▲
Te Tari Arotake Mātauranga	▲	▲	▲				▲
Te Manatū mō te Taiao	▲		▲	▲			▲
Te Manatū Aorere	▲		▲	▲			▲
Te Manatū Hauora	▲	▲	▲				▲
Te Tūāpapa Kura Kāinga	▲	▲	▲				▲
Te Tari Tāke	▲	▲	▲		▲		▲
Te Tari Taiwhenua	▲	▲	▲				▲
Te Tāhū o te Ture	▲	▲	▲	▲			▲
Toitū te Whenua	▲	▲	▲			▲	▲
Whakaata Māori	▲	▲	▲	▲	▲	▲	▲
Te Rōpū Pārongo Tārehu o Aotearoa	▲	▲		▲			▲
Oranga Tamariki	▲	▲	▲				▲
Te Manatū mō ngā Iwi o Te Moana-nui-a-Kiwa	▲	▲	▲				▲
Te Kawa Mataaho	▲	▲	▲	▲			▲
Te Manatū Whakahiato Ora	▲	▲	▲				▲
Toi Hau Tāngata	▲	▲	▲				▲
Tatauranga Aotearoa	▲	▲	▲				▲
Te Aho o Te Kahu	▲	▲		▲			▲
Te Arawhiti	▲	▲	▲	▲		▲	▲
Te Māngai Pāho	▲	▲	▲		▲		▲
Te Puni Kōkiri	▲	▲	▲		▲	▲	▲
Te Taura Whiri i te Reo Māori	▲	▲	▲	▲	▲	▲	▲
Te Manatū Waka	▲	▲		▲			▲
Te Tai Ōhanga	▲	▲	▲	▲			▲
Te Manatū Wāhine	▲	▲	▲				▲

* Kei tēnei pou ngā rauemi (he mea mahi mai i waho, i roto rānei) hei tautoko i te ako me te rere o te reo Māori, ngā tohu tūmatanui, ngā taupānga, ngā karahihi, ngā whaitua rumaki, ngā wānanga/kura reo, ngā patapatai reo (hei tautohu i ngā hiahia o ngā kaimahi mō te whakamahere reo), ngā whakapāpātanga me ngā waitohu whakatairanga.

** Ko te Kaihāpai Reo FTE, he tangata kua āta kopoua hei kōkiri, hei whakatutuki i ngā mahi Maihi Karauna.

*** Kua whāi anga te pūtahi hei whakanui ā-utu i ngā kaimahi mōhio ki te reo Māori. Ko te taiutu, kei te āhua tonu o te matatau, he mea ine ki tētahi anga aromatawai whakaroto, ki te Whakamātautau Tohu Taumata rānei a Te Taura Whiri i te Reo Māori.

† Nā runga i te āhua o te wā i whakapūrongo ai ēnei hua mō te Maihi Karauna, i puta te pūrongo mō ēnei i te tau 2021–22.

Ngā Pūngao Puta

Te Whakatairite ki te Tauākī Koronga mō ngā Mahi kia Tutuki

02

Te whakapiki i te tokomaha o ngāi Aotearoa e maimoa ana i te reo Māori, kia ākona ai, kia kōrerotia ai hei wāhi nui o tō tātou tuakiri ā-motu

Ngā mea i kī ai mātou ka tutuki i a mātou i te 2021–22

Ā mātou whāinga i tēnei arotahinga:

- › ki te tautoko i ētahi kaupapa nunui (ā-motu, ā-rohe), tae atu ki Te Wiki mō te Reo Māori me Ngā Tohu Reo Māori, hei whakamarewa tonu i te mana o te reo Māori, hei akiaki hoki i a ngāi Aotearoa ki te tautoko o tōna whakaoranga ake
- › ki te whakatenatena, ki te whakanui i ngā mahi a te rāngai tūmataiti ki te whakaora i te reo Māori, mātua rā ērā e kaha ana te toro, te kitea me te whakaawe
- › ki te whakahaere kaupapa whakatairanga tuihono mā te rangatahi

Ko te keonga mātāmua o tēnei whakaarotau rautaki, ko ngāi tūmatanui (Aotearoa whānui).

NGĀ IA O MUA

SPE #	2020–21 Tuturu
2.1	3,998 ngā whakahaere 1,074 miriona a ngā kiri
2.2	Tohuine hou: 16
2.3	Tohuine hou: 25
2.4	Tohuine hou: Kāore i inea
2.5a	Tohuine hou: Kāore i inea
2.5b	Tohuine hou: Kāore i inea

2021–22 TUTUKINGA

Tohuine	Koenga	Tūturu	Tihoinga	Hononga ki te Anga Putanga
2.1 Te maha ake o ngā whakahaere rāngai tūmataiti, whakahaere hapori hoki ka whai wāhi ki ngā kaupapa reo Māori, tae atu ki ngā papamahi whakamahere reo	5,000 ngā whakahaere, 1,322 miriona a ngā tāngata	6,166 ngā whakahaere, 1,452 miriona* ngā tāngata takitahi	1,166 ngā whakahaere 130,000 ngā tāngata takitahi	Kia kaha ake te kōrero Māori a ngāi Aotearoa
2.2 Te maha ake o ngā taura kua whiria ki ngā rōpū whai pānga mai	12	25	13	Kia kaha ake te kōrero Māori a ngāi Aotearoa
2.3 Te maha o ngā kaupapa ka tautokona, ā-tuihono, ā-tinana anō	40	48	8	Kia kaha ake te kōrero Māori a ngāi Aotearoa
2.4 Te ōrau o ngā whakahaere i tautokona e mea mai ana kua koni whaka-te-ao-mārama rātou	80%	80%**	Karekau	Kia kaha ake te kōrero Māori a ngāi Aotearoa
2.5a He whakapikinga i te nui o ngā kaitono ā-īmēra ki ngā ngohe whakatairanga o Te Taura Whiri i te Reo Māori.	98,000†	140,664	42,664	Kia kaha ake te kōrero Māori a ngāi Aotearoa
2.5b He whakapikinga i te nui o ngā apataki aka pāpori o ngā ngohe whakatairanga o Te Taura Whiri i te Reo Māori	136,000†	143,500	7,500	Kia kaha ake te kōrero Māori a ngāi Aotearoa

* Kei roto i tēnei nui ko ngā kaiwhakauru hou 377,416 mō te tau pūtea 2021–22, kua tāpiri ki te Tapeke Katoa ki tēnei Wā o te Tau o te 1,074,426 mō te tau pūtea 2020–21.

** I tā rātou pūrongo whakamutunga, e tohu mai ana te hunga whiwhi moni i te Pūtea Kaupapa Maihi Karauna i te Koni Whaka-te-Ao-Mārama.

† Tohuine hou nō Ngā Whakapae Tahua: Tahua Whanaketanga Māori 2021–22 (Tāpiritanga).

He Take Wānanga

MELODOWNZ – Kaiwaiata o Fine / Pai, 2021



Te Pūtea Maihi Karauna – Waiata Anthems

Nō te tau 1999 i tū atu ai a Hinewehi Mohi ki mua i te aroaro o te tini me te mano i Twickenham, ka waiata i te ngaringari a te motu ki te reo Māori.

He tuatahitanga hoki tēnei – kāore anō a Aotearoa whānui kia rite mō tēnei tūāhua. Rangona ana te ngākau kawa, rere ana te kupu kino. Ka mate a Hinewehi ki te parahau i tāna i mahi ai, i te reo Māori anō – ki te ao pāpāho. Heoi anō, nā tōna mina nui ki te tuku i tōna reo ake ki te ao i taua rangi rā, ko te oroko poipoinga o tēnei mea te tuakiri ā-motu ki te ngutu o te iti, o te rahi. Ko tōna tukunga iho, ko te waiatatanga o te ngaringari a te motu ki te reo Māori me te reo Pākehā i ēnei rā.

E rua ngahuru tau i muri, ka tahuri a Hinewehi ki te ngaki i Waiata Anthems hei whakanui i ngā tāwhaitanga roa kua oti i a tātou i te ara tārai tuakiri ā-motu.

“He kōrero ēnei mō te whakamana, mō te whakawātea hoki i te reo Māori mā roto i te waiata, ki ngā kaiwaiata tonu, otirā ki te iwi whakarongo. Ko te kawae ake a ēnei iho pūmanawa i te wero nui nei, e tohu ana i te tupu haere o te māia me te whakahihī o te motu ki tō tātou tuakiri ahurea ahurei, hei pārekareka, hei whakanui mā te katoa.”

► Te Horopaki

I runga i te kaupapa whakamātau e kīia nei ko Pokapū, ka takoto he taumatua whakamāori, ka poipoia hoki ētahi kaiwaiata kia whakaputa tauira reo Māori o ētahi waiata reo Pākehā. He wāhi nui tō te kaupapa nei hei whakareorua i te ahumahi puoro – māna e rerekē ai te āhua o tā tātou aro atu, tae atu ki tā tātou tito, waihanga, kai atu anō hoki i ngā puoro e whakahaumako nei i te tuakiri ahurea o te motu nei.





Annie Crummer – Hina ki Tai, 2021

► Te Ngakinga

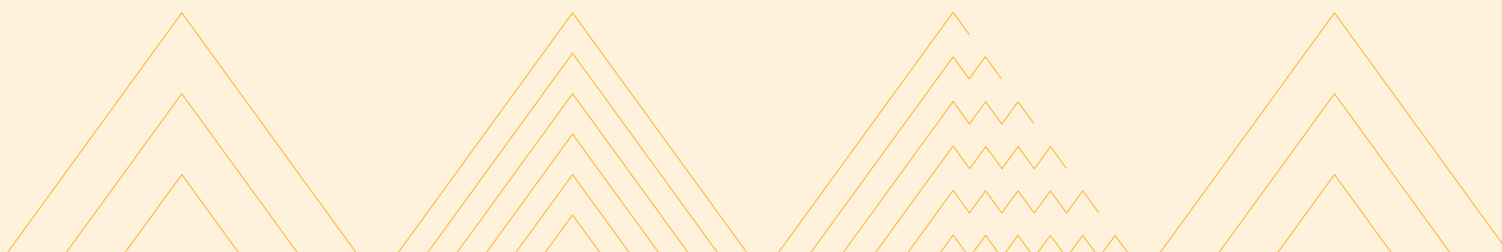
He pai ake ki te hunga nō nā noa nei i tīmata ai te ako i te reo Māori te tīmata ake ki tētahi waiata e taunga ana rātou. Ko te whakamāori i tētahi o āna ake waiata tētahi tino ara e poipoia ai te kaiwaiata ki te āta whakapakari haere i tōna matatau ki te reo, me tōna māia ki te waiata ki te reo Māori.

► Te Hua

He tokomaha ngā kaiwaiata kāore ō rātou hononga ki ō rātou papakāinga, marae, whakapapa, kei te iti anō te mōhio ki te ao Māori. Tērā te tangata e manawapā i tēnei āhua, engari i tutuki i te katoa te mahi i whakaritea, me te rongu anō i tētahi mana, i tētahi kaha i hua ake i tēnei wheako e rerekē ai pea te āhua o tana noho ki te ao. Ko Paige Tapara (Ngāti Tūwharetoa, Ngāti Maniapoto) hei tino tauira. Kāore a Paige i hiahia waiata ki te reo Māori, he mānakanaka nōna kei hē kē tana hāpai i te reo. Heoi anō, e rua āna waiata i hopu ai, ka mea ā ka tū ki te kawē ā-tinana i aua waiata ki te atamira. Kua tīmata tāna ako i te reo Māori, me te tō mai anō i ōna mātua ki roto i ana mahi ako.

“He kōrero ēnei mō te whakamana, mō te whakawātea hoki i te reo Māori mā roto i te waiata, ki ngā kaiwaiata tonu, otirā ki te iwi whakarongo. Ko te kawē ake a ēnei iho pūmanawa i te wero nui nei, e tohu ana i te tupu haere o te māia me te whakahīhi o te motu ki tō tātou tuakiri ahurea ahurei, hei pārekareka, hei whakanui mā te katoa.”

**Hinewehi Mohi, Kaiwhakaputa,
Waiata Anthems**



► Te Pānga

I muri i te angitu o te kohinga *Waiata Anthems* tuatahi, he tokomaha ake te hunga i whai wāhi mai ki tō te tau 2021. E 30 ngā waiata i tukuruatia ki te reo Māori. Ka tukuna ēnei hei rārangi waiata i Te Wiki o Waiata Anthems. Hui katoa, e 3.9 miriona* ngā tāngata i toro i ngā waiata nei i ngā aka pāhopori huhua. I runga i te *Waiata Anthems* nei, ka tukuna motuhaketia tētahi EP o ētahi waiata e rima a te kaiwaiata arotini nei, a Lorde. Kāore i nui whakaharahara te āhua o te whakaterere i te kohinga nei a Lorde, ko Te Ao Mārama te ingoa, engari nā tōna apataki nuipuku huri i te ao, e 30 miriona ngā whakarongotanga i te 24 hāora tuatahi i muri i te tukunga ki te ao. I tuatahi tana kohinga reo Pākehā, a *Solar Power*, ā, i tuawhitu tana kohinga reo Māori, a *Te Ao Mārama*, i te rārangi o ngā Top 10 Albums**.

Whai i muri i Te Wiki o te Reo Māori, tērā anō tā Rob Ruha, tāna waiata ko '35' te ingoa, i rere ki te toi o ngā rārangi waiata tuawhenua o te motu nei. Waihoki te ataata i mahia hei hoa mō '35', kihai i ārikarika te horapa ki TikTok, inā te 12 miriona ngahoro o ngā mātakitanga; i tino paingia hoki e ngā iwi o tāwāhi – mātua rā ngā iwi taketake me ngā hāpori kirimangu. Nā te *Waiata Anthems* nei, kua hanga māori noa te reo Māori ki te reo irirangi auraki. I te wiki whai i muri i Te Wiki o te Reo Māori, 10 ngā waiata o ngā waiata e 20 kei runga rawa o te rārangi Top 20 i Aotearoa kei te reo Māori, he reorua rānei. E 30.9 ōrau te piki o ngā whakarongotanga ki ngā Waiata Reo a ngā kaipuoro o Aotearoa i te hauwhā tuatahi o te tau pūtea 2021–2022**. Ko hea kē tētahi tohu pai ake o te pīrangitia o ngā puoro e manaaki ana i te reo Māori.

12m

Horapa ana te waiata
ā-ringā a Rob mō
tana '35' ki Tiktok
– 12 miriona ngā
mātakitanga



* Te whakarāpopototanga whakatairanga a Gō Media mō te Wiki o ngā Waiata Anthem

** Ngā tatauranga a te NZ Music Commission Q3 2021 https://nzmusic.org.nz/media/uploads/Quarterly_Unit_report_-_Q3_2021.pdf

► Ki Tua

Ahakoā ko wai, ahakoā ki hea, e āhei ana te tangata te toro i te reo Māori mā roto i te waiata. I tērā raumati, ngātoro ana tērā te reo o Aotearoa ki ngā whare me ngā papa puoro puta noa i te motu. Tū ana ngā kaipuoro ki te hiki i ngā waiata reorua, reo Māori anō hoki, ko ngā whakaminenga tonu hei reo waiata tautoko. Nā roto mai i te wheako kotahi o te takitini, ko te hiki o te wairua o te hunga e whakanui ngātahi ana i aua waiata. Kua riro te puoro Māori ki te ara auraki, ki reira tupu matomato ai hei puoro hou mā ngā arotini i Aotearoa.



A Jerome Kavanagh me tētahi o te Drax Project, 2021



**Kua riro te puoro
Māori ki te ara
auraki, ki reira tupu
matomato ai hei puoro
hou mā ngā arotini i
Aotearoa.**

Te roopu Katchafire – Ngā kaiwaiata o 100/Karawhiua, 2021



He Take Wānanga

Whakamānawa Aowhānui

► Te Horopaki

Ko tā ngā Golden World Awards a IPRA, he tohu tiketike e whakanui ana i te kairangi i roto i ngā kawenga whakapāpā ki te iwi tūmatanui, huri i te ao. I te 2021, ka toa Te Taura Whiri i te Reo Māori i ētahi wehenga e waru o ngā tohu nei a IPRA. Ko te mea me mātua kōrero, koinei te whakawhiwhinga tuatahinga o tētahi kaupapa o Aotearoa ki te tohu ikeike nei, ki te Grand Prix 2021. Ko Te Wā Tuku Reo Māori te mea e whakanuia ana, tēnei kaupapa matihiko i hui tahi ai te 1 miriona tāngata ngahoro ki te kaupapa reo Māori nui katoa, mai mai anō.

► Te Ngakinga

Ko te tikanga ka tū te hui tuku tohu ki Ūropi, engari i taua wā rā e tino raru ana ngā rerenga atu i ngā whenua katoa o Te Moananui-a-Kiwa ki wāhi kē o te ao. Toko ake ana te whakaaro ko Ngāti Rānana kē hei māngai mō Te Taura Whiri i te Reo Māori ki taua hui.

“Kua whakaatu a ngāi Aotearoa, kāore i tua atu i te reo hei paihere i te iwi. Tuitui tāngata, tuitui korowai: ka mutu, mā te korowai nei tātou e rangitāmiro, haere ake nei.”

Whaea Esther Kerr Jessop, ONZM, QSM

► Te Hua

I te mutunga iho, ka whakakorehia te hākari whakanui i whakaritea rā kia tū ki Lithuania. Ka tū kē ko tētahi hui whakahirahira ki New Zealand House, i Rānana, i te Whiringa-ā-rangi 2021. Ko te reo rāhiri, nō Ngāti Rānana me te New Zealand High Commissioner ki Ingarangi Nui, a Bede Corry.

Riro ana nā Esther Kerr Jessop ONZM, perehitene, kahurangi anō hoki o Ngāti Rānana, nāna i nanao atu te tohu tiketike mā mātou. Tēnei anō mātou te whakamihī nei i ana whakapaunga kaha tautini ki a ngāi Māori, ki a ngāi Aotearoa e noho rā ki Ingarangi, me tana whakaae māna te taonga nei e hāpai mā mātou. Ā, e tika ana anō ko Ngāti Rānana tērā i whai wāhi nui ki te kaupapa nei, inā hoki ko Tā Timoti Kāretu KNZM QSO, Toihau Tuatahi o Te Taura Whiri i te Reo Māori, ko ia anō hoki tētahi o te hunga nāna a Ngāti Rānana i whakatū.

► Te Pānga

Nā ngā Golden World Awards a IPRA, ka āta mahi tahi mātou ki te whānau o Ngāti Rānana, ka whiria hoki he taura e hono mai anō ai rātou ki te wā kāinga. I te atamira o te ao, ka whakatāirihia tēnei mea te manaaki i te reo, mā te whakaatu i te titikaha nui e whakaoratia ake ai tētahi reo, otirā me te kītea mai anō o te whakawhanaunga tahi a Aotearoa whānui i runga i te kaupapa nui, i runga anō i te harikoa nui.

He mea tautāwhi tā mātou kaupapa e tētahi pūtahi rautaki matihiko ko For Purpose te ingoa. Ko tōna 360 nei ngā kaupapa e whakataetae tahi ana, ko ētahi nā ngā umanga auaha nui katoa o te ao. Ko ngā kupu a te Perehitene o te IPRA, a Philippe Borremans hei whakaata i te wairua o te huihuinga: “Ko te hanga arawhiti, ko te whakatupu māramatanga, ko te tūhonohono tāngata, koirā te tino o ā tātou mahi hei kaiwhakamōhio i te iwi. Ka mutu, nā konā anō i tino nui ai ngā pōti mō Te Wā Tuku Reo Māori i ngā Golden World Awards a IPRA. I titi tonu ki ngā whatumanawa.”



Te Kaitiaki Pūtea o IPRA, a Nigel Chism, e mihi ana ki a Esther Kerr Jessop ONZM. I whakanuia hoki te wahine nei i ngā Whakamānawa Huritau a te Kūini 2021, mō ana whakapaunga kaha ki te iwi Māori me tana tauwhiro i ngā hononga o Aotearoa ki Ingarangi Nui.

► Ki Tua

He mea whakatū mātou ki te whakatāiri i te reo Māori hei reo mataora, hei reo kōrerorero noa. Ko tēnei whakanui a te ao i ā mātou kawenga whakapūioio ake i te reo Māori, he whakatitina pea i ō tātou hoa huri i te ao e whawhai ana i ā rātou ake whawhai pēnei. Whai i muri i te Tau mō ngā Reo Taketake Huri i te Ao i te 2019, me tōna whāinga kia tupu te mārama ki te noho puiaki o tēnei mea te reo ki te oranga o te tangata, kua tohua e te Kotahitanga o ngā Whenua o te Ao ko te 2022 ki te 2032 te Ngahurutanga Tau mō ngā Reo Taketake Huri i te Ao.

E kī ana te kōrero, ‘Hui tātou ka tū’, ā, ko Te Wā Tuku Reo Māori tērā e whakaata ana i te Aotearoatanga, hei mātaki mai mā te ao nui tonu. Kia tīkina ngā kupu a Ms Jessop, “Kua whakaatu a ngāi Aotearoa, kāore i tua atu i te reo hei paihere i te iwi. Tuitui tāngata, tuitui korowai: ka mutu, mā te korowai nei tātou e rangitāmiro, haere ake nei.”

Ngā tohutoa i whakawhiwhia mai i te tau pūtea 2021–22



Ngā Tohu a Reed 2021 mō Te Wā Tuku Reo Māori

Winner: International – Best International Campaign (National)

Winner: International – Best International Website

Finalist: Digital – Websites – Best Website for Issue Advocacy or Public Affairs Campaign

Finalist: Grassroots Advocacy – Best Action Center/Grassroots Website

Finalist: Overall – Best Website



Ngā Golden World Awards a IPRA 2021 mō Te Wā Tuku Reo Māori

Winner: Grand Prix 2021 – Influencer Management (in-house)

Winner: Community Relations (in-house)

Winner: Digital Creativity (in-house)

Winner: Event Management (in-house)

Winner: Integration of Traditional and New Media (in-house)

Winner: Media Relations (in-house)

Winner: Public Sector (in-house)

Winner: Social Media (in-house)



Ngā Tohu Hoahoa Papai a te Designers Institute of New Zealand

Winner: Best Offices & Workplace Environments / I waenga i te 200 me te 1000 mita pūrua

He mea hoahoa e RCG Ltd, Designworks mā Te Taura Whiri i te Reo Māori



Ngā Pūngao Puta

Te Whakatairite ki te Te Tauākī Koronga mō ngā Mahi kia Tutuki

03

Te waihanga me te whakatairanga rauemi hei tautoko i te whakamahere, te ako me te whakamahi i te reo Māori

Ngā mea i kī ai mātou ka tutuki i a mātou i te 2021–22

Ā mātou whāinga mō tēnei arotahinga:

- › ki te whakatairanga i ngā taputapu me ngā rauemi whakamahere reo kua waihangaia e mātou hei tautoko i ō mātou hoa pātui i te Maihi Karauna, tae atu ki te whārahi o ngā rauemi ako, whakamahi i te reo kua takoto kē.
- › ki te pātui atu ki ētahi atu whakahaere, tae atu ki Te Mātāwai, ki te waihanga rauemi hou, hei whakaea i ngā hiahia, hei whakakapi i ngā āputa.
- › ki te taupua i te puna kupu o te reo Māori, me te whai kia tāraia, kia wātea hoki he kupu hou tuawhiti, he paerewa tuawhiti anō hoki, hei taunaki i te rere o te reo Māori.
- › ki te tono rangahau e arotahi ana ki te waihanga tauira raraunga, tae atu ngā tikanga papai katoa mō te whakaako me te ako.

Ko ngā keonga mātāmua o tēnei whakaarotau rautaki, ko te rāngai tūmataiti me ngā whakahaere hapori (ko rātou nei hoki ngā ringa poipoi i te whakaoranga ake o te reo) me ngāi tūmatanui (te umaraha o Aotearoa).

NGĀ IA O MUA

SPE #	2019–20 Tuturu	2020–21 Tuturu
3.1	Tohuine hou: 514	200
3.2	–	Tohuine hou: 2
3.3	–	Tohuine hou: 2
3.4	–	Tohuine hou: 233,000
3.5	–	Tohuine hou: 100%
3.6	–	Tohuine hou: Kāore i inea

2021–22 TUTUKINGA

Tohuine	Koenga	Tūturu	Tihoinga	Hononga ki te Anga Putanga
3.1 Kia maha ake ngā kupu Māori, e taea ai te kōrero mō ngā āhuatanga whāiti me ngā āhuatanga hou ki te reo Māori	220	220	Nil	Kia pai ake, kia pūmau ake anō hoki te kounga o te reo Māori
3.2 Kia whakakotahitia, kia paiheretia ngā putunga kupu	2	2	Nil	Kia pai ake, kia pūmau ake anō hoki te kounga o te reo Māori
3.3 [†] Te maha o ngā kaupapa rangahau me ngā kaupapa arotake ka tonoa kia kawea	2	4	2	Kia pai ake te taha whakamahere me te tautoko i te ako me te kōrerotanga o te reo Māori
3.4 Te ōrau o ngā rauemi ka tirohia, ka kapohia	270,000	1,245,760	975,760	Kia kaha ake te kōrero Māori a ngāi Aotearoa
3.5 Te ōrau o te hunga whakamahi i ngā rauemi ka mea mai i āwhina tonu ngā rauemi i a rātou ki te whakamahere, ki te ako, ki te kōrero anō hoki i te reo Māori	80%	91%*	11%	Kia pai ake te taha whakamahere me te tautoko i te ako me te kōrerotanga o te reo Māori
3.6 Te ōrau o te hunga whakamahi i ngā rauemi ka ine, ka pūrongo mai anō hoki i te koninga whaka-te-ao-mārama (mai i te Kore ki te Pō, i te Pō ki te Awatea), nā runga anō i tā rātou whakamahere, ako, kōrero rānei i te reo Māori	80%	94%**	14%	Kia pai ake te taha whakamahere me te tautoko i te ako me te kōrerotanga o te reo Māori

[†] Ko tēnei tohuine, nō roto mai i te Rohenga Pūtea: Whanaketanga Māori 2021–22.

* From Kura Reo Rāngai Tūmatanui Summary Report. This figure is an average from the responses to post-participation survey questions related to four critical elements of language revitalisation.

** E ai ki te pūrongo arotake i te WHAKAMĀTAURANGA o te Kura Reo 2022, i hua ake tēnei ōrau i te toharite o ēnei āhuatanga e whā: Te Whai Wāhi, Te Whakamahi, Te Tahua Reo, Te Mana.



Te Wā Tuku Reo Māori

► Te Horopaki

I ā mātou mahi whakatupu i te māna me te koutu o te reo, whakahaerehia ai e mātou Te Wiki o te Reo Māori i ia Mahuru, hei whakanui i te tāpaenga o te petihana ki te Pāremata i taua marama i te tau 1972, e tono ana kia whakamanaia te reo Māori. Me te aha, kua whakarae mai te whakarauoratanga o te reo Māori i tēnei kaupapa, kua nui ake hoki te hiahia ki te rauemi whakatairanga me te rauemi āwhina i te ako o te reo Māori.





► Te Ngakinga

Ko ētahi kawenga o Te Wiki o te Reo Māori, ko te tautāwhi i te tangata ki te ako kupu, kiānga Māori, ko te whakatupu i te mārama, ko te whakamānawa anō hoki i te reo me ngā tikanga Māori. Ki ōna anō ara maha, he tautoko tā Te Taura Whiri i te Reo Māori i ōna anō pākai o te reo Māori, he akiaki i te katoa o Aotearoa kia ako i tētahi mea hou, kia mirimiria hoki taua kōrero hou e te arero i ā rātou mahi o ia rā.

ReoMāori^{.CO}
 .NZ
16,927

**E 16,927 ngā tikiake
 o ā mātou rauemi i
 te marama o Hune**

► Te Hua

I te 2020, ka tū mai ko www.reomaori.co.nz hei herenga rauemi, kaupapa, kōrero whakatairanga. He wehe motuhake tēnei i te pae tukutuku rangatōpū – he whare matihiko, he piringa e ākona ai, e kōrerotia ai te reo. Mai i tōna orokohanga ake, kua morimoria e mātou te kaha tautoko a te motu whānui i ā mātou pae matihiko katoa, tae atu ki te pae tukutuku Reo Māori. Ki konei mātou tāmata ai i te māra rauemi, i te whakawhanaungatanga hoki, tētahi ki tētahi, mā roto i ngā whakawhitinga wheako ka utaina ki te pae tukutuku e tūmatanui mā.



► Te Pānga

Kura atu, whare mahi mai, whānau atu, hoa mai – ko te manomano o ngāi Aotearoa ka tū ki te whakanui ngātahi i a tātou me tō tātou reo Māori. Hei te hononga mai ki Te Wā Tuku Reo Māori, ka eke a Aotearoa whānui ki te waka whakaora i whakaterea e te whakatapuranga o mua atu. Ka tupu haere te whakanuinga o te reo Māori i te takanga o te wā, ka tupu anō hoki te kohinga wheako, kaupapa, mahara anō hoki kei tā mātou pae tukutuku e iri ana. I te 2020, e 500 noa ngā wheako i utaina ki te pae tukutuku i muri i te kaupapa Wā Tuku. Ka taka ki te 2021, kua piki ki te 6,000 utanga. Kua kite mātou, he tumu herenga tāngata, herenga wheako te pae tukutuku nei mō te hunga e tere haere ana i ō rātou nā moana ako i te reo Māori.

Kia kainamu ki Te Wiki o te Reo Māori, kua piki te hunga tūhono ki ngā imēra me te hunga ka toro i te pae tukutuku. Whaihoki, i ia marama i te 2022, kua kaha ake te whāwhāria o ā mātou rauemi. I te Huitanguru, 12,049 ngā kapohanga; i te Pipiri, 16,927 ngā kapohanga – e 29 ōrau tēnā whanaketanga. Kei roto katoa i ēnei kapohanga ngā rārangi kupu, ngā aratohu whakahua, ngā kāri kiāngā me ngā mahere. Ko ngā waitohu o te pae tukutuku, e hono ana ki te hei tiki e whakamahī nei mātou i wāhi kē.



► Ki Tua

Arā kē te whakatarenga, kia whakanuia e Aotearoa te reo Māori i ngā rangi katoa o te tau, tē whakanui kau ai i Te Wiki o te Reo Māori. Ko tā mātou Wā Tuku Reo Māori kua uhia nei ki te tohu whakamānawa, he pōhiri ki Aotearoa nui tonu kia eke mai ki te waka, ki te hoenga ka whano ki ngā tātai kōrero o Aotearoa. Ko tātou tahi ki te whakamaumahara ki ngā mahi o mua, ki te whakanui i te reo o Aotearoa ka rua, ki te whakariterite anō mō tua. Tātou, tātou ē!



Ngā kaupapa reo Māori i tautokona i te 2021–22

Te Kapa Ōpanga Māori vs Hāmoa

Ngāti Rānana London Māori Club

Ngā Whakataetae Kī-o-rahi

Go Media! – Mānawatia a Matariki

Tonga vs Te Kapa Ōpango

Hospitality NZ

Reo Irirangi

Te Wiki o te Reo Wēra

Tānga Kōrero mō KOWHEORI-19

Te Wiki o te Reo Airihi

Mahuru Māori

Te Wiki o te Reo Kōtarani

NZ Vaiaso o le Gagana Samoa – Te Wiki o te Reo Hāmoa

Te Wiki o te Reo o Haina

Te Tāhuhu o te Mātauranga – Kaupapa Kēmu

Ngā kaupapa i tautokona ki te pūtea mō ngā Kaupapa Maihi Karauna

Te Wharetā o Huia – Te whakaterenga o Mokopuna Matatini

Toi Aotearoa

Waitohu o Tāmaki

Design Institute of New Zealand – Best Awards

IPRA Golden World Awards

Ngā Tohu Matariki o te 2021

Asthma and Respiratory Foundation NZ

Netball Central

A Matariki ki Pōneke

Springboard Arts Trust

Te Mana Āhua Ake Charitable Trust

Waiata Māori Music Awards

Poitarawhiti ki Waitakere – Puni Reo Poitarawhiti

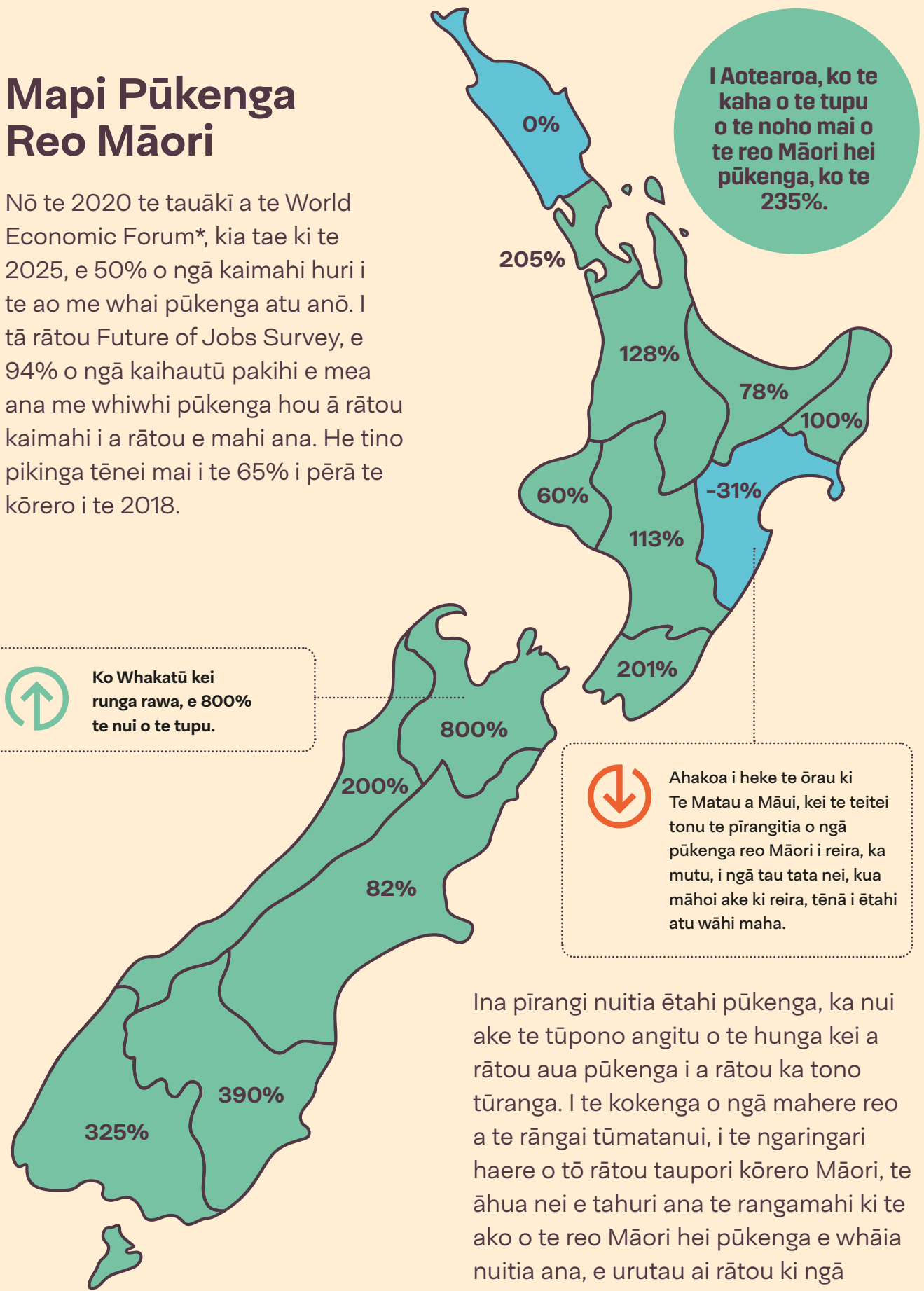
Regional Manu Kōrero – Regional event

Aotearoa New Zealand Festival of the Arts



Mapi Pūkenga Reo Māori

Nō te 2020 te tauākī a te World Economic Forum*, kia tae ki te 2025, e 50% o ngā kaimahi huri i te ao me whai pūkenga atu anō. I tā rātou Future of Jobs Survey, e 94% o ngā kaihautū pakihi e mea ana me whiwhi pūkenga hou ā rātou kaimahi i a rātou e mahi ana. He tino pikinga tēnei mai i te 65% i pērā te kōrero i te 2018.



I Aotearoa, ko te kaha o te tupu o te noho mai o te reo Māori hei pūkenga, ko te 235%.

Ko Whakatū kei runga rawa, e 800% te nui o te tupu.

Ahakoa i heke te ōrau ki Te Matau a Māui, kei te teitei tonu te pīrangitia o ngā pūkenga reo Māori i reira, ka mutu, i ngā tau tata nei, kua māhoi ake ki reira, tēnā i ētahi atu wāhi maha.

Ina pīrangi nuitia ētahi pūkenga, ka nui ake te tūpono angitu o te hunga kei a rātou aua pūkenga i a rātou ka tono tūranga. I te kokenga o ngā mahere reo a te rāngai tūmatanui, i te ngaringari haere o tō rātou taupori kōrero Māori, te āhua nei e tahuri ana te rangamahi ki te ako o te reo Māori hei pūkenga e whāia nuitia ana, e urutau ai rātou ki ngā tūranga mahi kei tua o te awe māpara.

* World Economic Forum *The Future of Jobs Report 2020* | World Economic Forum (weforum.org)

Ngā Pūngao Puta

Te Whakatairite ki te Tauākī Koronga mō ngā Mahi kia Tutuki

04

Te oke kia mau tonu te kounga o te reo Māori

Ngā mea i kī ai mātou ka tutuki i a mātou i te 2021–22

Ā mātou whāinga mō tēnei arotahinga:

- › ki te whakamana, ki te whakangungu anō hoki i ngā kaiwhakamāori ā-tuhi, ā-waha, ki te whakamāmā hoki i te ara e taea atu ai ngā ratonga whakamāori
- › ki te whakatairanga, ki te whakahaere i ngā whakamātautau o Whakamātauria Tō Reo Māori

Ko ngā keonga mātāmua o tēnei whakaarotau rautaki, ko te hunga matatau me ngā tāngata takitahi/ngā whakahaere e rapu ana i ngā tautoko mātanga mō te whakaora/whakamahi i te reo.

NGĀ IA O MUA

SPE #	2019–20 Tuturu	2020–21 Tuturu
4.1	Tohuine hou: 58	70
4.2	Tohuine hou: 59	66
4.2a	–	Tohuine hou: -8%
4.3	Tohuine hou: 120	136
4.4	–	Tohuine hou: 3
4.4a	Tohuine hou	-8%
4.5	–	Tohuine hou: Kāore i inea

2021–22 TUTUKINGA

Tohuine	Koenga	Tūturu	Tihoinga	Hononga ki te Anga Putanga
4.1 Te tokomaha ake o ngā kaiwhakamāori ā-tuhi, ā-waha kua whai raihana, e kawē ake ana i ngā mahi whakamāori	50	101**	51	Kia pai ake, kia pūmau ake anō hoki te kounga o te reo Māori
4.2 Te tokomaha e uru ana ki ngā whakangungutanga o Te Toi Reo Māori	50	93	43	Kia pai ake, kia pūmau ake anō hoki te kounga o te reo Māori
4.2a† Kia te tokomaha ake o te hunga uru ki ngā whakangungutanga o Te Toi Reo Māori (kaiwhakamāori ā-tuhi, ā-waha)	>20%	41%	21%	Kia kaha ake te kitea me te rere o te reo Māori i te ratonga tūmatanui
4.3 Kia tokomaha ake te hunga kawē ake i te whakamātautau Tohu Taumata me te whakamātautau Rāngai Tūmatanui Māori	150	155	5	Kia kaha ake te kitea me te rere o te reo Māori i te ratonga tūmatanui
4.4 Kia ariari ake te kitea o te whakamātautau Tohu Taumata me te whakamātautau Rāngai Tūmatanui Māori	E 4 ngā kaupapa whakatairanga	4	Nil	Kia kaha ake te kitea me te rere o te reo Māori i te ratonga tūmatanui
4.4a† Te nui ake o ngā Whakamātautau Tohu Taumata me ngā Whakamātautau Kaiwhakamāori ka tū	>20%	14%	-7%	Kia kaha ake te kitea me te rere o te reo Māori i te ratonga tūmatanui
4.5 Te ōrau o te hunga whai wāhi ki Te Toi Reo Māori kua ine mārire i tā rātou koni whaka-te-ao-mārama	70%	83%**	13%	Kia kaha ake te kōrero Māori a ngā Aotearoa

† Ko tēnei tohuine, nō roto mai i te Rohenga Pūtea: Whanaketanga Māori 2021–22

* Ko te pikinga katoa mai i te 31 i te tau o mua ki te tapeke o te 101.

** I pūtaka mai i te uiuinga arotake i Te Toi Reo Māori o te tau 2022.

He Take Wānanga



Te Whakamātautau Tohu Taumata

► Te Horopaki

Mai i te 2020 kua tōwhiriwhiri Te Taura Whiri i te Reo Māori i tāna Whakamātautau Tohu Taumata (LFE) ki ngā aka pāhopori, me te aha, kua tokomaha ake te hunga e mina ana ki te whakamātau i tō rātou matatau ki te reo Māori. Me i tukua ā-tinana atu ngā whakamātautau – pērā i ō mua atu – kua noho whakaraerae ngā kaitono i ngā mate rere o te wā, kua raru anō hoki te mahi nei i te taurangirangi o ngā here. Koia tēnei ko te aranga ake o tētahi kaupapa rāwekeweke i ā mātou hangarau matihiko kia taea ai ngā whakamātautau LFE te whakahaere ki te ara tuihono.

► Te Ngakinga

Hei rongoā wāpoto, ka arotahia tētahi ara whakahaere tuihono i te LFE e tutuki tonu ai ngā kawatau mō te tutukinga o ngā mahi. Ko tā mātou i whakatau ai, me whakamahi ngā pūmanawa rorohiko i a mātou kē, me tētahi taupānga hui ataata i māmā noa te tiki atu. Nā konei i wawe ai te waihanga pae whakamahi utukore, me te kore tonu i puta ki tua o ngā pou aronui o te kaupapa.





► Te Hua

Ko te keonga, kia 20 ōrau te tokomaha ake ka hāpai i te LFE ina whakaritea ki tērā tau, arā, kia 150 ngā kaitono. I te mutunga iho, 14 ngā hui ā-tinana, e 4 anō hoki ngā hui tuihono i tū, 1551 ngā kaitono i oti i a rātou te whakamātautau – e rima te nui ake i te keonga.

► Te Pānga

Ahakoia whāiti te aronga o te kawenga nei, i kitea tonutia ētahi mea e pai ake ai te whakahaere i te hōtaka LFE. Hei tauira, nā te whakatairanga tuihono, ka tupu te minamina ki te kaupapa. Heoi anō, i herea ngā kawenga tuihono i te whakamātautau ki te 25 tāngata kia kore ai e raru te hononga waea-ataata. I konei ka kitea me whakapai ake te tukanga whakataki i te hunga e tatari ana ki te uru ki te whakamātautau.

Pērā anō i tā mātou i whakapae ai, i te korenga o ngā haere ā-tinana ki te whakahaere whakamātautau rāngai tūmatanui nui tonu, ka nui te heke o ngā utu whakahaere i te LFE i te whakawhitinga ōna ki te aka tuihono. Heoi anō,

ko te pānga nui katoa ia – ki ngā kaimahi me ngā kaitono – ko te tere ake o te whakamōhio atu i ngā hua o te whakamātautau. He mahi e pahore ai te tuarā te tiritiri māka i mua, i te mea me āta tiroiro rawa ia puka whakamātautau. Nō te huringa o te whakamātautau kia matihiko te āhua o te tuku, he iti noa ake te wā i pau ki te arotake i ngā puka whakamātautau katoa o ia whakahaeretanga i te LFE – ka heke mai i te rua wiki ki te toru rā.

► Ki Tua

He wero tonu te urupare inamata ki te raru nei, engari he āhuatanga tē taea te karo. Ko te hoahoa i tētahi pūnaha pūmau mō ngā whakamātautau tuihono tētahi wāhanga o tā mātou rautaki panonitanga matihiko whānui ake. Ka haere tonu ōna anō whakatikatika ki te tāhono kiritaki, te tiaki raraunga me te taha kiko o ngā whakamātautau i te takanga o te wā, i te whanaketanga o ngā tūāhanga hangarau. I tēnei kaupapa, ka whakamahia e Te Amo te urupare ki te urutā hei whakaea i ngā hiahia o tūmatanui mā, otirā me te eke tonu o ngā taumata teitei kua whakaritea mō ā mātou mahi.

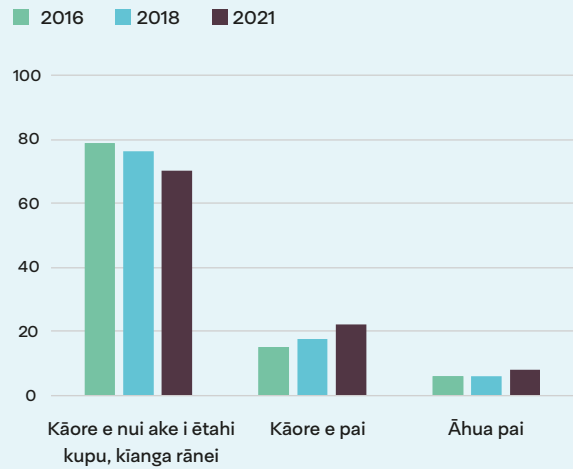


Te Matatau me te Tautoko i te Reo Māori

He tata ki te hauwhā o ngāi Māori he kōrero Māori hei reo tuatahi mō rātou

Ko tōna hauwhā (23%) o ngāi Māori i mea mai kei te kōrero Māori rātou hei reo tuatahi mō rātou – kua piki ake i te 17% i te 2018. He nui ake hoki te tūpono e matatau ana a ngāi Māori ki te kōrero, tēnā i ētahi atu iwi. Waihoki, i heke te hautau o ngāi Māori i mea mai kāore rātou e āhei te kōrero Māori (he kupu ruarua, he rerenga ruarua noa ka taea e rātou); i heke iho i te 36% i te 2016 ki te 29% i te 2021.

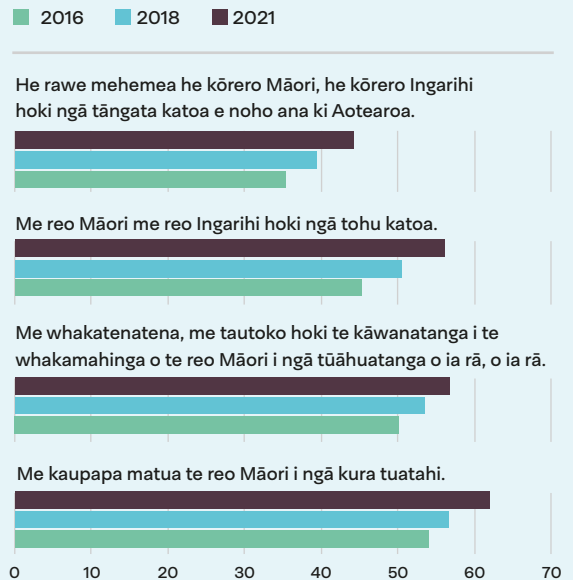
He mōhio ki te kōrero Māori i ngā kōrerorero noa o ia rā



Kua piki te tautoko i te kōrerotanga o te reo

He nui noa ake te tautoko a ngāi Māori i te rere o te reo Māori, tēnā i te taupori nui tonu. Ko tōna 80% o ngāi Māori i mea mai e whakaae ana, e tino whakaae ana rānei rātou me akiaki, me tautoko hoki te kāwanatanga i te rere o te reo Māori i ngā kawenga o ia rā, ā, ko tētahi 85% e whakaae ana, e tino whakaae ana rānei me noho te reo Māori hei kaupapa ako me mātua whai i te kura tuatahi.

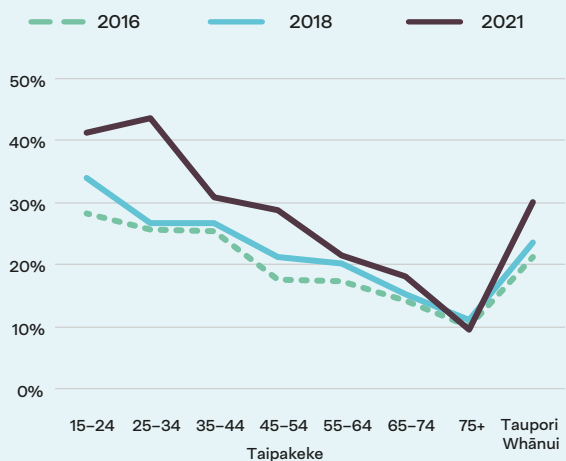
Te ōrau e whakaae ana, e tino whakaae ana rānei



Ko te rangatahi e ārahi ana i ngā kokenga reo Māori

Mō te taupori nui tonu, ka piki te taipakeke, ka heke te matatau ki te reo. Ko ngā rōpū 15–24 ngā tau, e 25–34 hoki ngā tau, ko rātou te hunga nui ake te tūpono he neke atu i te kupu ruarua, i te rerenga ruarua tō rātou mōhio ki te kōrero Māori; ko te 41% tērā o te rōpū tuatahi, ko te 43% o te rōpū tuarua. Ko te rōpū e 25–34 ngā tau te hunga kua tino pai ake, inā hoki kua piki ake i te 27% i te tau 2018. He nui noa ake tēnei i te pikinga i kitea i te taupori whānui.

Te matatau ki te reo i runga i te taipakeke



Kua piki te tautoko i te kōrerotanga o te reo Māori mai i te 2016, ka mutu kua tairite tonu te piki.

Takenga mai: Stats NZ | <https://www.stats.govt.nz/news/te-reo-maori-proficiency-and-support-continues-to-grow/>

Ngā Pūngao Puta

Te Whakatairite ki te Tauākī Koronga mō ngā Mahi kia Tutuki

05

Te hauora me ngā pūkenga tara ā-whare

Te Mahi

Te kawē i ngā mahi a Te Taura Whiri i te Reo Māori kia nui ngā hua, kia iti ngā whakapaunga, kia tukua ai ngā taumatua pai katoa e taea ana hei whakaāhei i te whakarauoratanga o te reo Māori.

NGĀ IA O MUA

SPE #	2018-19 Tuturu	2019-20 Tuturu	2020-21 Tuturu
5.1	-	-	Tohuine hou: 18%
5.2	-	-	Tohuine hou: 83%
5.3	-	-	Tohuine hou: I tutuki
5.4	-	-	Tohuine hou: I tutuki
5.5	I tutuki	I tutuki	I tutuki

2021-22 PERFORMANCE

Tohuine	Koenga	Tūturu	Tihoinga
5.1 Tiriwā kaimahi	<20%	13%	7%
5.2 Te ngākau titikaha o ngā kaimahi ki te kaupapa	>60% survey responses	83%	23%
5.3 Ngā whakaritenga whakaōrite whiwhinga mahi ka tutuki	Whakatinana i te rautaki whakahaumarū hauora tūroro-kore	Met	Nil
5.4 Te hauora me te haumarū	Whakatinana i te rautaki whakahaumarū hauora tūroro-kore	Met	Nil
5.5 Kia pūmau te pai o ngā whakatau arotake, kia pai ake rānei	Whakapai ake i aromatawainga 'pai' (mō ngā pūnaha pārongo ahumoni me ōna tikanga whakahaere, anō hoki ko ngā pūnaha me ngā tikanga whakahaere e hāngai ana ki te pārongo ā-tutukinga). Kia pupuri hoki i te aromatawainga "tino pai" (mō te taiao tikanga whakahaere).*	Met	Nil

* E ahu mai ana i ngā kitenga mai i te tātaritanga kaute o 2020-21.



Te Taiao e Mahi Nei Mātou

“Itiiti rearea, teitei kahikatea ka taea”

► **Ko Te Taura Whiri i te Reo Māori te pūtahi kua tohua:**

1. Māna e tātaki te rurutanga me te whakatinanatanga o te Maihi Karauna
2. Māna e whakatairanga te reo Māori hei reo mataora, hei reo ka rere māori noa
3. Māna e tuku ngā tiwhikete whakaū i te matatau ki te reo Māori.

Ko te hua nui katoa o te Mate Korona, ko te panonitanga matihiko o Te Taura Whiri i te Reo Māori kia taea tonutia ai e mātou te hora ngā ratonga tuawhiti tonu, whakahihiko tonu, i roto anō i te wā poto, ki te rāngai tūmatanui, tūmataiti, otirā ki Aotearoa whānui. I tahuri mātou ki ngā aka pāhopori me ērā taura kua roa e tauwhirotia ana, me te aha, tupu ana tā mātou toro me tā mātou whakaawe i ia tau. I te pounga o ngā mahere reo puta noa i te Ratonga Tūmatanui, ko te tikanga ka kaha ake te aro ki ngā putanga, ka iti ake te aro ki ngā tutukinga.

E arotahi tonu ana Te Taura Whiri i te Reo Māori ki te panonitanga matihiko i roto i ngā mahi whakahihiko, tūhonohono, whakamahere reo, whakaū i te matatau ki te reo me te kounga o te reo, me kore e whanake tonu tā mātou whakaawe.



► Te Hauora me ngā Pūkenga Tara ā-Whare

I te roanga o te tau ka ea tonu ā mātou whāinga rautaki tōmua – he whakatikatika atamai i te kete hangarau, he whakahoutanga i te kaupapahere kia hāngai ki ngā hiahia taurangirangi, taha hauora, taha mahi o ngā kaimahi, i te takanga o te wā. Nō te ohonga ake anō o te motu me te ōhanga – i runga anō i te ohiti – ka whakarerekētia e mātou ngā wāhi mahi me te āhua o te mahi, me kore noa e tutuki tonu ngā whāinga ahakoa te kore e noho tahi ā-tinana.

Ka mahi mātou kia mārama pū ngā tikanga whakapāpā tahi ki ētahi atu, mai i te CE, ā, i roto anō hoki i ia kāhui mahi. Ka toipoto tonu mātou, ahakoa kei hea ake tēnā me tēnā e mahi ana. Ko te karakia tū ai i ia ata hei tohu i te ngākau titikaha o ngā kaimahi kia noho tōpū mātou i te huatakinga o ia rā – ā-kiko rānei, ā-hiko kē ranei.

He mea whakamarohi ake te hangarau, me te aha, kua wātea noa ake te ara ki te whatunga me ngā pārongo e hiahia nei mātou, ahakoa kei hea mātou. Nā runga i ngā painga kua hua ake, kua manawaroa ake tā mātou umanga, kua raungāwari ake te āhua o te mahi, i a mātou ka whakatupu nei i tō mātou tokomatua, ka whātika nei anō hoki ki te neke ki tō mātou tari hou ā te 2023. I a mātou e whanake nei, kei te kawea ake ngā mātaka hou, me tō mātou mōhio anō hoki he tino pūkenga te urutau – takitahi, takitini anō – e pai ai te haere ā ngā rā e tū mai nei.

Te Urupare ki KOWHEORI-19

- › I whakawāteahia ngā kaimahi kia pai ai tā rātou haere me ō rātou whānau kia werohia ki te rongoā āraimate.
- › I whakahaua ngā kaimahi hou me ngā manuhiri kia poto katoa ngā werohanga āraimate i mua i te whakauru mai, hei tiaki i ā mātou tāngata.
- › I whakapaingia ngā āhuetanga nekeneke, kia āhei ai ngā tāngata te manaaki tahi te taha mahi me te taha whaiora, ahakoa ngā hurihuri mutunga-kore o te wā.



► Te Āhua o ngā Kaimahi

Nā te nui ake o ngā mahi i whakaritea kia tutuki, ka piki te tokomaha o ngā kaimahi i hiahiatia hei kawē i ngā mahi, me te āhua anō o ngā hangarau e tutuki ai. Maringanui i ea tā mātou tonu kia nui ake te pūtea hei whakatutuki i ēnei āhuatanga. Kei te tūārere panoni tonu tā mātou whakahaere e rere ana. Tekau mā rima ōrau te piki o te raukaha taha kaimahi i te tau i mutu i te 30 o Pipiri 2022.

Ko te kaha o te tiriwā kaimahi, mō taua takiwā anō, ko te 13 ōrau.

E kitea ana i te tūtohi nei te āhua o ngā kaimahi i te 30 o Pipiri 2022, mō ngā tau e rua ka hori ake nei.

	2020–21	2021–22
Te katoa o ngā kaimahi	34	40
Ngā kaimahi pūmau	32	37
Ngā kaimahi wā-uka	2	3
Ngā kaimahi kōhikohiko	-	1
Ngā tūranga wātea (e kimihia ana he tangata mō te tūranga) <i>Whakamārama: Nā te tupu haere o tā mātou whakahaere</i>	12	19
Tāne	13	10
Wāhine	21	30
Kaimahi hauā	-	-
Utu whakapakari kaimahi	\$39,989	\$76,884.38
Tiriwātanga kaimahi	20%	13%
Te pakeke toharite o ngā kaimahi	41.5 years	42
Te roa toharite e noho mai ana hei kaimahi	3.06 years	2.95 years

► Te Ū ki ngā Kawenga a te ‘Rangatira Pai’

Ko ngā mahi i kawea e Te Taura Whiri i te Reo Māori mō te wāhi ki tana tokomatua i te tau pūtea kua hipa, ka inea i runga anō i ēnei karangatanga e whai ake nei. E whakaata ana ēnei i ngā āhuatanga o te ‘rangatira pai’ e tautuhia rā i te wāhanga 118 o te Ture Hinonga Karauna 2004.

Te Whakapakari i ā Mātou Tāngata

I runga i te mahi tahi ki Te Pūkenga Here Tikanga Mahi, kua takoto he Anga Whakataki Tutukinga, nō te ao Māori ōna uara tūāpapa. Hei te 1 o Hōngongoi 2022 tīmata ai te whakamātauranga o te mea nei.

I whakangungua ngā pouwhakahaere me ā rātou kaimahi ki ngā tikanga akoako, poipoi kia whaihua ake ai ngā whakawhiti kōrero mō te whanake whaiaro.

Ngā Taiutu

I whiriwhiria tahitia anō tā mātou Whakaaetanga Mahi Takitini ki Te Pūkenga Here Tikanga Mahi. I whakaae anō hoki mātou kia whakapikia ngā utu ā-tau a ngā kaimahi kei ngā Whakaaetanga Mahi Takitahi.

Nō konā ka:

- › poua he poutama utu ā-tau
- › whakapikia te utu tāpiri mō te reo Māori

► Ngā Utu Tāpiri i Utua

Te Tohu i Ekea	Te Moni Tāpiri
Kaiwhakamāori ā-tuhi, ā-waha rānei	\$10,000
Te Tohu i Ekea	Te Moni Tāpiri
Whakamātautau Tohu Taumata (LFE)	
Taumata Rima	\$7,500
Taumata Whā	\$6,500
Taumata Toru	\$5,500
Taumata Rua	\$2,500
Taumata Tahī	\$1,500

▶ Te ngākau titikaha o te whakahaere nei ki te ao Māori

He mea whakahi ki a mātau te kaiwhakawhiwhi mahi, ki te whakaōrite whiwhinga mahi, ki te whakarato i tētahi whare haumarū mō te hunga e haere mai ana ki tō mātau rōpū me ā rātau pūkenga whānui, ā rātau whēako hei whakahaumako i tō mātau tōpūtanga kaimahi.

Kawea ai ā mātou mahi me ā mātou whakapāpātanga ki te tangata ki ngā reo e rua. Waihoki ā mātou pānui tūranga wātea, ka tuhia hoki ērā ki te reo Ingarihi me te reo Māori.

E mārama ana mātou ko te hunga kei a rātau ngā pūkenga e tutuki ai ngā mahi, kei ngā taumata katoa o te mōhio ki te reo. Heoi anō, ahakoa kei hea, me hiahia rā ki te ako i te reo, ki te kōrero hoki i te reo i ngā kawenga o ia rā, kia pakari ake ai ngā reo.

E whakawhiwhia ana he mahi ki te hunga whai pūkenga reo Māori i runga anō i te whakaaro ka takoto he ara whakapakari e eke ai tēnā me tēnā ki te taumata ka taea e ia.

E ora ana tēnei mea te manaakitanga i tō mātou whare. Ka āwhinatia ērā e tauhou ana ki te reo ki te ako i te reo, kia takuhe ai, kia tangatanga ai tā rātau noho ki te wharemahī Māori.

Kei te whakaratoa hoki he akoranga reo Māori mā te katoa, ahakoa kei tēhea taumata reo rātau. E ai ki te uiuinga e kīia ana ko Te Kawa Mataaho Māori Crown Capability – e 6 ōrau noa iho o te hunga i uiuia i mea mai ka taea e rātau te kōrerorero noa ki te reo Māori. Engari i tō mātou nei whare, he auau te rere o te reo Māori.

▶ Te Matatau ki te Reo Māori

Te Taumata Reo Māori	Tokohia
Toi Reo Māori	6
Taumata Rima	3
Taumata Whā	2
Taumata Toru	14
Taumata Rua	6
Taumata Tahī	4

Arā ētahi kaimahi kāore anō kia eke ki te taumata e taea ai e rātau te Whakamātautau Tohu Taumata.





I whakaritea he wero hanga ārai rewharewha utukore mō ngā kaimahi katoa.



I horahia utukorehia he Hōtaka Tautāwhi Kaimahi. Waihoki, i runga i te urupare ki te Mate Korona, ka tū he hui hei whakamaumahara atu he aha katoa ōna ratonga.



Ka whakanōhia he rawa āwhina i te mate ohorere ki ia tēpumahi, me te wai māori anō mō roto i te tari.



Ka tukua ngā whakangungu whakaora ohotata ki ngā kaimahi.



Ka utua te haere ki te whare korikori.



Te Whai kia Hauora Tonu ā Matou Tāngata



TĀ MĀTOU AROTAHINGA MŌ TE 2021-22



Te Whakatupu i ō Mātou Pūkenga



I whakatūria he tari whakahaere hōtaka.



I te whanake haeretanga o tō mātou tokomatua, ka whakawāteahia he ara e tono ai ā mātou kaimahi i ētahi tūranga kē atu o roto i te whakahaere nei. Kātahi ka kimihia he kaimahi hou hei whakakī i ngā whārua i mahue mai.



I kaweā he uuiunga kia kitea ai te urukaha o ngā kaimahi.

Te Mana Arataki

He mea arataki Te Taura Whiri i te Reo Māori e tōna anō Poari, arā, e ngā Kaiwhiri tokorima, he mea kopou e te Minita Whanaketanga Māori. Koia ēnei ko ngā Kaiwhiri i te 30 o Pipiri 2022:



Ahorangi Rawinia Higgins
Toihau
Ngāi Tūhoe



Charisma Rangipunga
Toihau Tuarua
Kāi Tahu, Ngāti Kahungunu,
Taranaki, Ngā Rauru



Wayne Panapa
Kaiwhiri
Ngāpuhi, Ngāti Whātua,
Waikato-Maniapoto



**Tākuta Jeremy Tātere
MacLeod**
Kaiwhiri
Ngāti Kahungunu



Bayden Barber
Kaiwhiri
Ngāti Kahungunu, Ngāpuhi



Ngā Pārongo mō te Ū ki ngā Whakahau

Ngā Tohutohu Mai a te Minita

Kāore kau he tohutohu ōkawa mai a te Minita Whanaketanga Māori ki Te Taura Whiri i te Reo Māori i te tau 2021–22 (2020–21 karekau).

Ngā Takahanga i te Ture

Kāore e whakaaetia kia mahi Te Taura Whiri i te Reo Māori i tētahi mahi e takahi ana i tētahi ture whare pāremata, kei waho rānei i te mana o tētahi ture whare pāremata. Kāore Te Taura Whiri i te Reo Māori i mahi i tētahi mahi kei waho atu o tōna mana ā-ture (te wāhanga 19 o te Ture Hinonga Karauna 2004).

Te Whakaae Kia Kawea Ake Tētahi Mahi

I raro i te Ture Hinonga Karauna 2004, me he mema e whai pānga ana ki tētahi take hinonga Karauna, kia kua taua mema e pōti, e whai wāhi rānei ki tētahi matapakinga, ki tētahi whakataunga rānei a te poari, a tētahi komiti rānei, e pā ana ki taua take. He oti anō, e taea ana e te Upoko o tētahi hinonga Karauna tēnei here te wewete mai i tētahi, i ētahi rānei o ngā mema o te poari, mehemea he painga ka puta ki te iwi tūmatanui i tana pērā (wāhanga 68(6) o te Ture Hinonga Karauna 2004). Kāore he wewetenga o tēnei tū here i te 2021–22 (2020–21 karekau).

Te Tauākī Whakahaere





Te Tauākī Whakahaere

Rohenga Pūtea: Whanaketanga Māori me te Karangatanga Tutukinga

E takea mai ana te pūtea a Te Taura Whiri i te Reo Māori i te Rohenga Pūtea: Whanaketanga Māori, i raro i tēnei tāpuinga:

1: Whakarauora Reo mō te Motu – hei tautoko i te whakarauoratanga ake o te reo Māori ki te motu whānui; hei whakahaere anō hoki i Te Taura Whiri i te Reo Māori.

Ko te takune, mā tēnei pūtea ka tutuki pai ngā mahi whakatairanga, rauhi, whakaora i te reo Māori, mā roto mai i:

- › te haere tautini o ngā mahi a Te Taura Whiri i te Reo Māori
- › te kawenga o tētahi hōtaka rangahau e tautoko ana i te whakaoranga ake o te reo Māori
- › te hāpainga o te *Maihi Karauna* (te rautaki reo Māori a te Karauna),
- › ētahi atu mahi i raro i te ture kua āta tohua hei kawē mā Te Taura Whiri i te Reo Māori.

Arā hoki te takune ka āwhina te pūtea nei ki te whakaputa i ēnei hua kua tohua ki te Rohenga Pūtea: Whanaketanga Māori¹:

- › e rauhi ana, e whakatoitū ana, e whakatupu ana a ngāi Māori i ō rātou reo, i ā rātou taonga, i ō rātou mātauranga, me ā rātou tikanga
- › e whakatupu ana, e whāomoomo ana, e whakawhanake ana a ngāi Māori i ā rātou rawa
- › e mau haere ana i a ngāi Māori ōna anō pūkenga, mātauranga anō hoki.

E whakahau ana ngā Whakatau Tata mō te Tāpuinga Moni 2021–22 kia tuku pūrongo Te Taura Whiri mō ētahi tohuine tutukinga e whā. Kei tā mātou Te Tauākī Koronga mō ngā Mahi kia Tutuki ngā kōrero mō ērā tohuine tutukinga, kei ngā whārangi 17 ki te 41 o tēnei pūrongo.

E whakaaturia ana i te tūtohi i raro nei te katoa o te pūtea i tae mai.

Tūtohi 1: 2021–22 Whiwhinga Tūturu, Whiwhinga i Tohua, i runga i te Takenga Mai

	2021–22 Tūturu	2021–22 i tohua	Tihoinga
	\$	\$	\$
Tāpuinga: Whakarauora Reo Māori ā-Motu ²	13,364,000	13,364,000	-
Te katoa o ngā whiwhinga – mai i te Karauna	13,364,000	13,364,000	-
Ētahi atu whiwhinga	45,572	290,000	(244,428)
Te katoa o ngā whiwhinga	13,409,572	13,654,000	(244,428)

1. Rohenga Pūtea: Whanaketanga Māori, The Estimates of Appropriations 2020–21 – Māori Affairs Sector, B.5, Vol. 8, page 4. .

2. He rite ngā whiwhinga i tae mai ki Te Taura Whiri i raro i te tāpuinga ki ngā whakapaunga tūturu a te Kāwanatanga i hua ake i te tāpuinga, ā, me mātua whāki tēnei i raro i te Ture Pūtea Tūmatanui.

Te Pūrongo a te Katātari Motuhake

AUDIT NEW ZEALAND

Mana Arotake Aotearoa

Ki te hunga pānui i ngā tauākī pūtea me ngā mōhiohio whakatutuki a Te Taura Whiri i te Reo Māori mō te tau i mutu ai i te 30 o Pipiri 2022

Ko Te Mana Arotake te kaitātari kaute o Te Taura Whiri i te Reo Māori (Te Taura Whiri). Nā Te Mana Arotake ahau, a Stephen Lucy, i kopou ki te whakahaere mā te whakamahi i ngā kaimahi me ngā rawa a Mana Arotake Aotearoa, i te tātari kaute o ngā tauākī pūtea me ngā mōhiohio whakatutuki, tae atu ki ngā mōhiohio whakatutuki mō tētahi pūtea, a Te Taura Whiri mōna.

Tō mātou whakaaro

Nā mātou i tātari:

- › ngā tauākī pūtea a Te Taura Whiri i ngā whārangi 56 ki te 71, kei roto ko te pūrongo o te tūnga pūtea i te 30 o Pipiri 2022, te tauākī o ngā whiwhinga me ngā whakapaunga whānui, te tauākī o ngā panoni tūtanga me te tauākī kapewhiti mō te mutunga o te tau i taua rā me ngā tuhīpoka o ngā tauākī pūtea tae atu ki ngā kaupapa here mahi kaute me ētahi atu kōrero whakamārama; me
- › ngā mōhiohio whakatutuki a Te Taura Whiri i ngā whārangi 13 ki te 40 me te 51.

Ko tā mātou whakatao:

- › e whakaatu tika ana ngā tauākī pūtea a Te Taura Whiri i ngā whārangi 56 ki te 71:
 - i ngā āhuatanga kikokiko katoa:
 - te āhua o te pūtea i te 30 o Pipiri, 2022; me
 - āna mahi whakahaere pūtea me ngā kapewhiti mō te tau i mutu i taua rā; ā,
 - e ū ana ki ngā tikanga mahi kaute whānui i Aotearoa e ai ki te Kaupapa Whāki Ririo mō ngā Paerewa Hinonga Painga Tūmatanui; ā,

- › e whakaatu tika ana, i ngā āhuatanga kikokiko katoa, ngā mōhiohio whakatutuki i ngā whārangi 13 ki te 40 me te 51:
 - ngā whakatutukinga a Te Taura Whiri mō te tau i mutu i te 30 o Pipiri 2022, tae atu:
 - mō tēnā, mō tēnā kātū o ngā putanga me pūrongo:
 - ana paerewa whakatutuki i oti rawa ki ērā i matapaetia, kei roto i te tauākī o ngā tūmanakohanga whakatutuki mō te tau pūtea; ā,
 - ana whiwhinga tūturu me ōna whakapaunga putanga i oti rawa ki ērā i matapaetia, kei roto i te tauākī o ngā tūmanakohanga whakatutuki mō te tau pūtea; ā,
 - ko tērā i tutuki ai i te pūtea; ā,
 - ngā whakapaunga tūturu, ngā whakapaunga haupū rawa rānei i oti ki ngā whakapaunga, ngā whakapaunga haupū rawa rānei i tāpuitia, i matapaetia rānei.
 - ka tautuku ki ngā ritenga tātari kaute ko te tikanga e whakaae whānuitia ana i Aotearoa.

I takaroa te whakatutukinga o tā mātou tātari kaute

I tutuki tā mātou tātari kaute i te 21 o Paengawhāwhā 2023. Koia nei hoki te rā i whakaputaina ai tēnei whakatao. E āhukahuka ana mātou i oti tā mātou tātari kaute i muri atu i te wā kua whakaritea e te Ture Hinonga Karauna 2004. Ko te take o tēnei ko te pota nō ngā kaitātari kaute i Aotearoa me ngā rara o te Kowheori-19, tae atu ki ngā rāhui.

Kei raro nei ngā whakamārama mō te pūtākenga mai o te whakatao nei. Hei tāpiri atu, e rārangi ana ngā kawenga a te Poari me ā mātou kawenga e pā ana ki ngā tauākī pūtea me ngā mōhiohio whakatutuki, ka tuku kōrero mō ētahi atu mōhiohio, ā, ka whakamārama i tō mātou motuhaketanga.

Te pūtaka o tā mātou whakatau

He mea whakahaere tā mātou arotakenga i runga anō i ngā Paerewa Arotake a Te Mana Arotake, kei roto nei ngā Paerewa Ngaio me te Matatika me ngā Paerewa ā-Ao mō te Tātari Kaute (ki Aotearoa) i tukuna e Te Kāwai Ārahi Pūrongo Mōwaho. He whānui ake te whakamārama o ā mātou kawenga i raro i aua paerewa i te wāhanga Ngā Kawenga kei roto i te wāhanga kaitātari kaute o tā mātou pūrongo.

Kua tutuki i a mātou ā mātou kawenga i raro i Ngā Paerewa Arotake a Te Mana Arotake.

E whakapono ana mātou kua riro mai ngā taunakitanga tātari e rawaka ana, e tōtika ana hei tūāpapa mō tā mātou whakatau tātari.

Ngā kawenga a te Poari e pā ana ki ngā tauākī pūtea me ngā mōhiohio whakatutuki

Kei te Poari te kawenga mō Te Taura Whiri ki te whakarite, ki te whakaatu tika i ngā tauākī pūtea me ngā mōhiohio whakatutuki e ū ana ki ngā tikanga kaute e whakaaetia whānuitia ana i Aotearoa. Kei te Poari te kawenga mō aua whakahaere o roto e āhei ai ia ki te whakarite tauākī pūtea me ngā mōhiohio whakatutuki kāore rawa he hapa whaikiko i roto, ahakoa takea mai i te mahi māminga, he hapa pokerehū rānei.

Ina whakaritea ana ngā pūrongo pūtea me ngā mōhiohio whakatutuki kei te Poari te kawenga ki te aromatawai mō Te Taura Whiri mēnā he rawaka ngā rawa a Te Taura Whiri kia haere tonu hei pakihī. Kei te Poari anō hoki te kawenga mō te whāki, ina hāngai, i ngā take e pā ana ki te rawaka o ngā rawa kia haere tonu hei pakihī me te whakamahi i te kaupapa kaute o taua pakihī, engari rawa arā he takune ki te kati, te hanumi, ki te whakamutu rānei i ngā mahi a Te Taura Whiri, kāore he kōwhiringa rānei i tua atu i te kati, hanumi, whakamutu rānei.

Ka ahu mai ngā kawenga a te Poari mai i te Crown Entities Act 2004 me te Public Finance Act 1989.

Ngā kawenga a te kaitātari kaute e pā ana ki te tātari kaute i ngā tauākī pūtea me ngā mōhiohio whakatutuki

Ko ā mātou whāinga he rapu i runga i te tūturutanga mēnā e wātea ana ngā tauākī pūtea me ngā mōhiohio whakatutuki i ngā kōrero hapa, ahakoa tinihanga, hē rānei, me te tuku i te pūrongo a te kaitātari kaute e takoto ai tā mātou whakatau.

Ko tēnei mea te whakatūturu whaitake he whakatūturu taumata teitei, engari ehara i te kī taurangi mā te whakahaere i te tātari e ai ki Ngā Paerewa Arotake a Te Mana Arotake ka kitea i ngā wā katoa he hapa whaikiko mēnā kei reira tētahi. Ko te hapa whaikiko, he rahinga, he whākinga rānei e rerekē ana, e ngaro ana rānei, ā, ka hua mai pea i te mahi māminga, i te hapa pokerehū rānei. E whakaarohia ana te hapa whaikiko hei mea whaikiko mēnā, ahakoa takitahi, ahakoa tōpū, ko te tūmanako whaitake tērā tonu pea ka awea ngā whakatau a ngā kaipānui i muri i te pānui i aua tauākī pūtea me ngā mōhiohio whakatutuki.

Mō ngā kōrero tahua i pūrongoatia i ngā tauākī pūtea me ngā mōhiohio whakatutuki, i whāiti ā mātou tukanga ki te tiroiro i whakaae ngā mōhiohio ki tā Te Taura Whiri tauākī o ngā tūmanakohanga whakatutuki, me ngā Utunga ā-Tau me ngā Utunga ā-Tau Tāpiri o Ngā Pūtea 2021/22.

Kāore i aromataihia te haumaruru me ngā whakahaere o ngā whakaputanga tāhiko o ngā tauākī pūtea me ngā mōhiohio whakatutuki.

Hei wāhanga o te tātari e ai ki Ngā Paerewa Arotake a Te Mana Arotake, ka whakamahi mātou i te whakawā ngaio me te mau tonu ki te hokirua ngaio puta noa i te tātari. I tua atu:

- › Ka tautuhi mātou me te aromatawai i ngā mōrea o ngā kōrero hapa o ngā tauākī pūtea me ngā mōhiohio whakatutuki, ahakoa nā te tinihanga, nā te hē rānei, ka waihanga me te whakatinana i ngā tukanga tātari kaute e urupare ana ki aua mōrea, me te whai taunakitanga tātari kaute e rawaka ana, e tōtika ana hoki ki te tuku i tētahi pūtaka mō tā mātou whakatau. He teitei ake te tūponotanga kāore e kitea he hapa whaikiko e ahu mai ana i te mahi māminga, i tērā e ahu mai ana i te hapa pokerehū, nā te mea ka whai wāhi pea ki te mahi māminga te mahi kūpapa, te tāwhai, ngā hapa māriri, ngā aweketanga, me te takahi i ngā whakahaerenga o roto.

- › Ka whai mōhiotanga mātou ki ngā whakahaerenga o roto e hāngai ana ki te tātari hei hoahoa tukanga arotake e hāngai ana ki ngā āhuatanga. Heoi anō, kāore e hoahoina aua tikanga hei whakapuaki whakaaro ki te whaihua o ngā whakahaerenga o roto o Te Taura Whiri.
- › Ka arotake mātou i te tōtikatanga o ngā kaupapa here mahi kaute me te whai take o ngā whakatau tata mahi kaute me ngā puakanga hāngai a te Poari.
- › Ka arotake mātou i te tōtikatanga o ngā mōhiotanga whakatutuki kua pūrongotia i roto i tā Te Taura Whiri anga pūrongo i ana whakatutukinga.
- › Ka whakatau mātou i runga i te tōtikatanga o tā te Poari whakamahi i tōna kaupapa mahi tātari, ā, i runga anō i ngā taunakitanga tātari kua riro, mēnā kei reira he kumukumu whaikiko e pā ana ki ngā mahi me ngā āhuatanga ka whakaatu kāore pea e taea e Te Taura Whiri te noho tuwhera tonu mō muri atu. Ki te whakatau mātou he kōrero ahurangi kei reira, e herea ana mātou ki te whakaatu i roto i tā mātou pūrongo tātari kaute i ngā puakanga hāngai i roto i ngā pūrongo pūtea me ngā mōhiotanga whakatutuki, tērā rānei, ki te kore e rawaka rānei aua puakanga, ki te whakarerekē i tā mātou whakatau. E ahu mai ana ā mātou whakatau i ngā taunakitanga tātari kua riro tae noa ki te rā o tā mātou pūrongo kaitātari. Heoi anō, ka noho ngā mahi, āhuatanga rānei ā muri atu he pūtake pea kia whakamutu a Te Taura Whiri ki te mahi i ana mahi.
- › Ka arotakehia e mātou ngā whakaaturanga whānui, hanganga me ngā mea katoa kei roto i ngā tauākī pūtea me ngā mōhiotanga whakatutuki, tae atu ki ngā puakanga, ā, mēnā e tika ana te whakaatu a ngā tauākī pūtea me ngā mōhiotanga whakatutuki i ngā tino tauwhitinga me ngā putanga ake.

Ka kōrero atu mātou ki te Poari mō te whānuitanga me te wā o te tātari kaute, i tua atu i ētahi atu take, me ngā kitenga nui o te tātari kaute, tae atu ki ngā hapa nui o ngā whakahaere o roto ka kitea i roto i tā mātou tātari kaute.

I takea mai ā mātou kawenga i te Public Audit Act 2001.

Ētahi atu mōhiotia

Kei te Poari te kawenga mō ērā atu o ngā mōhiotia. Ko ērā atu o ngā kōrero ko ngā kōrero ērā kei ngā whārangi 1 ki te 11, 41 ki te 49, me te 55, engari ehara ko ngā tauākī pūtea me ngā mōhiotia whakatutuki, me te pūrongo a tā mātou kaitātari kaute.

Kāore e kapi i tā mātou whakatau mō ngā tauākī pūtea me ngā mōhiotia whakatutuki ērā atu mōhiotia, ka mutu kāore ā mātou whakatau ā-tātari kaute, whakaūtanga rānei mō ērā.

Mō te āhuatanga ki tā mātou tātari kaute i ngā tauākī pūtea me ngā mōhiotia whakatutuki, ko tā mātou kawenga he pānui noa i ērā atu kōrero. Nā tēnei, ka whiriwhiri mātou mēnā kāore i te tika ērā atu kōrero ki ngā tauākī pūtea me ngā mōhiotia whakatutuki, ko ngā mōhiotanga rānei i riro mai i te tātari kaute, i tētahi atu tikanga rānei kei te hapa te takoto. Mēnā, whai mai ana i ā mātou mahi, ko te whakatau he hapa whaikiko i roto i ērā atu mōhiotia, me pūrongo tēnā e mātou. Kāore i a mātou he mea hei pūrongo atu e pā ana ki tēnei.

Motuhaketanga

E noho motuhake ana mātou i Te Taura Whiri, ā, e ai ki ngā whakaritenga tū motuhake a Ngā Paerewa Arotake a te Kaitātari Matua, kei roto ko te Paerewa Ngaio me te Matatika 1: Te Tikanga Matatika Aowhānui mā Ngā Tohunga Whakatūturu i tukua e Te Kāwai Ārahi Pūrongo Mōwaho.

I tua atu tō mātou kaha kaitātari, karekau o mātou hononga, o mātou pānga rānei, ki Te Taura Whiri.



S B Lucy

Mana Arotake Aotearoa

Mō Te Mana Arotake

Te Whanganui-a-Tara, Aotearoa



Te Tauākī Noho Haepapa

Ko te Poari kei te pikau i te haepapa mō te whakatakotoranga o ngā tauākī pūtea me te tauākī o ngā mahi i tutuki i Te Taura Whiri i te Reo Māori, tae atu ki ngā whiriwhiringa o roto. Kei te noho haepapa anō mātou i ngā pārongo tutukinga mō te mutunga o te tau ka horahia e Te Taura Whiri i te Reo Māori i raro i te wāhanga 19A o te Ture Pūtea Tūmatanui, 1989. He kawenga anō kei runga i te Poari ki te whakatū, ki te tauwhiro anō hoki i tētahi pūnaha whakatina tara ā-whare e āta kitea ai, āe, e tika ana, e pono ana ngā mahi pūrongorongo pūtea. Ko te whakaaro iho o te Poari, e whakaata tika ana ēnei tauākī pūtea me tēnei tauākī o ngā mahi i tutuki i te tūnga pūtea me ngā mahi i kawea e Te Taura Whiri i te Reo Māori i te tau i eke i te 30 o Pipiri 2022.

Ahorangi Rawinia Higgins

Toihau

Te Poari o Te Taura Whiri i te Reo Māori

21/04/2023

Charisma Rangipunga

Toihau Tuarua

Te Poari o Te Taura Whiri i te Reo Māori

21/04/2023

Te tauākī whiwhinga, whakapaunga whānui

Mō te tau i eke i te 30 o Pipiri 2022

2020–21 Tūturu		Whakamārama	2021–22 Tūturu	2021–22 I tohua
\$			\$	\$
NGĀ WHIWHINGA				
Whiwhinga whakahaere mai i te Karauna				
8,810,000	Tāpuinga whakahaere		13,364,000	13,364,000
8,810,000	Te katoa o ngā whiwhinga whakahaere mai i te Karauna		13,364,000	13,364,000
Ētahi atu whiwhinga				
8,555	Whiwhinga huamoni		43,086	80,000
50,244	Ētahi atu whiwhinga	2	2,486	210,000
58,799	Te katoa o ngā whiwhinga mai i wāhi kē		45,572	290,000
8,868,799	Te katoa o ngā whiwhinga		13,409,572	13,654,000
NGĀ WHAKAPAUNGA				
Whakapaunga whakahaere				
3,509,550	Utu kaimahi	3	4,477,278	5,458,195
199,248	Whakapaunga hekenga wāriu, whakaurupātanga	6/7	242,165	310,936
4,617,018	Whakapaunga whakahaere	4	5,742,767	7,884,869
8,325,816	Te katoa o ngā whakapaunga		10,462,210	13,654,000
542,983	Te hemihemi/(tarepa) taha whakahaere me te katoa o ngā whiwhinga, whakapaunga whānui		2,947,362	-

He wāhanga taketake tonu nō ēnei tauākī pūtea ngā kaupapa–here kaute me ngā whakamārama mō ngā tauākī pūtea e mau atu nei. Kei te whakamārama 16 ngā kōrero mō ngā tihounga tawhiti mai i te pūtea i tohua.

Te Tauākī Tūnga Pūtea

I te 30 o Pipiri 2022

2020–21 Tūturu		Whakamārama	2021–22 Tūturu	2021–22 I tohua
\$			\$	\$
NGĀ HUARAWA				
Ngā huarawa wātea				
7,018,149	Moni ukauka me ōna ritenga	5	9,365,966	4,784,497
150,414	Tāke hokohoko kia tae mai		207,045	50,000
67,093	Utu tōmua		123,169	30,000
7,235,656	Te katoa o ngā huarawa wātea		9,696,180	4,864,497
Ngā huarawa he here kei runga				
626,820	Whare, utauta, taputapu	6	642,335	795,557
15,505	Huarawa whakawairua	7	202,327	239,961
–	Mahi e koke tonu ana	6/7	318,796	–
642,325	<i>Te katoa o ngā huarawa he here kei runga</i>		1,163,458	1,035,518
7,877,981	Te katoa o ngā huarawa		10,859,638	5,900,015
NGĀ TAUNAHATANGA				
Ngā taunahatanga o tēnei wā				
529,427	Ngā nama kia utua atu	8	423,867	100,000
276,014	Whakawhiwhinga kaimahi – o nāiane	9	412,047	250,000
805,441	Te katoa o ngā taunahatanga o tēnei wā		835,914	350,000
Ngā taunahatanga o raurangi				
2,982	Whakawhiwhinga kaimahi – tautini	9	6,804	5,000
2,982	Te katoa o ngā taunahatanga o raurangi		6,804	5,000
808,423	Te katoa o ngā taunahatanga		842,718	355,000
7,069,558	Ngā huarawa more		10,016,920	5,545,015
7,069,558	Te katoa o te tūtanga		10,016,920	5,545,015

He wāhanga taketake tonu nō ēnei tauākī pūtea ngā kaupapa–here kaute me ngā whakamārama mō ngā tauākī pūtea e mau atu nei. Kei te whakamārama 16 ngā kōrero mō ngā tihoinga tawhiti mai i te pūtea i tohua.

Te Tauāki Nekeneke Tūtanga

Mō te tau i eke i te 30 o Pipiri 2022

2020–21 Tūturu		Whakamārama	2021–22 Tūturu	2021–22 I tohua
\$			\$	\$
6,526,575	Pūtea Whānui		7,069,558	5,545,015
6,526,575	Te katoa o te tūtanga Karauna i te 1 o Hōngongi		7,069,558	5,545,015
542,983	Hemihemi/(tarepa) o roto i ngā mahi whakahaere		2,947,362	-
542,983	Te katoa o te hemihemi/(tarepa)		2,947,362	-
7,069,558	Te katoa o te tūtanga Karauna i te 30 o Pipiri		10,016,920	5,545,015

He wāhanga taketake tonu nō ēnei tauāki pūtea ngā kaupapa-here kaute me ngā whakamārama mō ngā tauāki pūtea e mau atu nei. Kei te whakamārama 16 ngā kōrero mō ngā tihoinga tawhiti mai i te pūtea i tohua.

Te Tauāki Kapewhiti

Mō te tau i eke i te 30 o Pipiri 2022

2020–21 Tūturu		Whakamārama	2021–22 Tūturu	2021–22 I tohua
\$			\$	\$
KAPEWHITI O ROTO I NGĀ MAHI WHAKAHAERE				
I tae mai he moni i (i whakapaua ki) ngā				
8,810,000	Whiwhinga mai i te Karauna		13,364,000	13,364,000
8,555	Whiwhinga huamoni		43,086	80,000
517,982	Whiwhinga i wāhi kē		2,485	210,000
(4,328,988)	Utu ratonga, utu hautaonga		(5,903,409)	(9,145,113)
(3,468,305)	Utu kaimahi		(4,337,423)	(4,163,714)
(116,472)	Utu tāke hokohoko		(56,631)	50,000
1,422,772	Kapewhiti more o roto i ngā mahi whakahaere		3,112,108	395,173
KAPEWHITI O ROTO I NGĀ MAHI HAUMI				
I tae mai he moni i (i whakapaua ki) te:				
(452,574)	Hokonga whare, utauta, taputapu		(428,924)	(385,000)
-	Hokonga hua whakawairua		(335,367)	(300,000)
(452,574)	Kapewhiti more o roto i ngā mahi haumi		(764,291)	(685,000)
970,198	Te (hekenga)/pikinga more i te moni ukauka me ōna ritenga		2,347,817	(289,827)
6,047,950	Te moni ukauka me ōna ritenga i te tīmatanga o te tau		7,018,149	5,074,324
7,018,149	Te moni ukauka me ōna ritenga i te paunga o te tau		9,365,966	4,784,497
7,018,149	E tohua ana ki: Te moni ukauka me ōna ritenga	5	9,365,966	4,784,497

He wāhanga taketake tonu nō ēnei tauāki pūtea ngā kaupapa-here kaute me ngā whakamārama mō ngā tauāki pūtea e mau atu nei. Kei te whakamārama 16 ngā kōrero mō ngā tihounga tawhiti mai i te pūtea i tohua.

Ngā Whakamārama mō ngā Tauākī Pūtea

1. Te Tauākī Kaupapahere Kaute

1.1 Hinonga Pūrongorongo

He hinonga nā te Karauna Te Taura Whiri i te Reo Māori, e tautuhia nei tōna hanga e te Ture Hinonga Karauna 2004. Kei Aotearoa tōna whare, kei Aotearoa āna mahi. Ko ētahi o ngā tino ture e whakahau ana me pēhea te āhua o āna whakahaere, ko te Ture Hinonga Karauna 2004 me te Ture mō te Reo Māori 2016. Ko te matua o Te Taura Whiri i te Reo Māori, ko te Karauna o Aotearoa.

Ko tā mātou whāinga matua, he tuku ratonga ki te iwi tūmatanui o Aotearoa. Kāore mātou e whai kia puta ake he hua taha moni nei i ā mātou kawenga.

Nā Te Taura Whiri i te Reo Māori tonu te whakatau he hinonga ia ka whakaputa painga ki te iwi tūmatanui (PBE) mō te wāhi ki ngā mahi pūrongorongo taha pūtea.

Mō te tau i eke i te 30 o Pipiri 2022 ēnei tauākī pūtea a Te Taura Whiri i te Reo Māori, ā, i whakaaetia e ngā Kaiwhiri i te 16 Hakihea 2022.

1.2 Te Tūāpapa o ngā Whakatakataka

He mea whakarite ngā tauākī pūtea i runga i te whakaaro he whakahaere taumano tēnei. I taurite te āhua o te whakahāngai i ngā kaupapahere kaute i te roanga o te tau.

■ TAUĀKĪ MŌ TE Ū KI NGĀ WHAKAHAU E HĀNGAI ANA

He mea whakatakoto ngā tauākī pūtea a Te Taura Whiri i te Reo Māori i runga i te whai i ngā whakahau a te Ture Hinonga Karauna 2004. Ko tētahi o aua whakahau, kia hāpaingia ngā tikanga kaute e whakaaetia whānuitia ana i Aotearoa (NZ GAAP).

Kua whakatakotoria hoki kia ū ki ngā paerewa kaute PBE kei te Upane 2. E āhei ana mātou te whai i ngā paerewa kaute o te Upane 2 i te mea he iti ake i te \$30 miriona ā mātou whakapaunga.

E hāpai ana ēnei tauākī pūtea i te Ritenga Whāki Pūiti o ngā Paerewa PBE.

■ TE MONI WHAKAATU ME TE WHAKAAWHIWHI

He mea whakaatu ngā tauākī pūtea ki nga tāra o Aotearoa.

1.3 Te Whakarāpopoto i ngā Kaupapahere Tāpua

■ NGĀ WHIWHINGA

Kei raro nei ngā whakamārama i ngā kaupapahere kaute whāiti i whāia mō ngā whiwhinga tāpua:

Funding from the Crown

Ko te nuinga o ngā moni a Te Taura Whiri i te Reo Māori, e ahu mai ana i te Karauna. Ko te whakaatu, te kore rānei e whakaatu i ngā whiwhinga whakawhiti-kore mai i ngā tahua, kei te āhua tonu o ngā tohutohu kei runga i te whakamahinga o te huarawa kua whakawhitia.

Mēnā he 'here' te tohutohu, e whakahaua ana te tangata ka whiwhi i te pūtea kia whakahoki i ngā rawa i whiwhi rā ia mēnā kāore e rite tāna whakamahi i aua rawa ki tā ngā whakaritenga i tohutohu ai, me te aha, riro ana hei taunahatanga ka kīia i muri mai he whiwhinga whakawhiti-kore, ina ea ngā 'here'.

Mēnā he 'aukati' te tohutohu, kāore e mātua whakahaua te tāngata ka whiwhi i te pūtea kia whakahoki i ngā rawa i whiwhi rā ia mēnā kāore e rite tāna whakamahi i aua rawa ki tā ngā whakaritenga i tohutohu ai, me te aha, kāore e whakaaturia hei taunahatanga whakawhiti-kore, engari ia, riro tonu atu hei whiwhinga whakawhiti-kore.

Ko ngā pūtea e tae mai ana ki Te Taura Whiri i te Reo Māori, me pau anake ki te whakatutuki i nga whāinga e tohua ana mō aua moni i te ture nāna te whakahaere nei i whakatū, tae atu ki ngā whakaritenga a te hunga ko rātou e tuku mai ana i ngā moni.

Ko te mōhio iho o Te Taura Whiri i te Reo Māori, karekau ana he here i runga i te pūtea kua tukuna mai, nō reira ka whakaaturia hei whiwhinga i te wā tonu e tika ana kia tae mai.

Whakatauria ana ko te wāriu tōkeke o ngā whiwhinga mai i te Karauna, e taurite ana ki ngā rahinga kei ngā whakaritenga homai pūtea.

Ngā Whiwhinga I Ngā Kaitautoko Pūtea

Ka ahu mai ēnei whiwhinga i ngā rōpū ka tautoko ā-pūtea i Te Wiki o te Reo Māori me Ngā Tohu Reo Māori, ā, e kīia ana he whiwhinga tē taea te whakawhiti.

Ngā Whiwhinga I Ngā Huamoni

Ka whakaaturia ngā whiwhinga huamoni i runga i te tikanga huamoni whaihua.

Te Tuku Ratonga

Ko ngā ratonga ka tukuna ki ngā hunga tuatoru i runga i ngā whakaritenga tauhokohoko, he mahi whakawhiti. Ka whakaaturia ngā whiwhinga i ēnei ratonga i runga i te ōwehenga o te mahi kua tutuki i te rā whakaatu i te tūnga pūtea.

■ NGĀ RĪHI

Ngā Rīhi Whakahaere

He rīhi tēnei e kore ai e āta tukuna māiretia ki te kairīhi ngā tūraru me ngā painga ka hua ake i te noho hei rangatira mō tētahi huarawa.

Ko ngā utu rīhi i raro i te rīhi whakahaere, ka whakaaturia hei whakapaunga i runga i te tikanga rārangi torotika mō te roa o ngā rā e mana ana te rīhitanga.

Ko ngā poapoa taha rīhi ka tau mai, ka whakaaturia ki te hemihemi, ki te tarepa rānei hei whakahekenga utu rīhi i te roanga o ngā rā e mana ana te rīhi.

■ TE MONI UKAUKA ME ŌNA RITENGA

Ka uru mai ki tēnei karangatanga: te moni kei te ringa, ngā moni tonono noa kei te pēke, me ētahi atu moni haumi he māmā noa te tiki atu, e toru marama iti ake rānei te roa e eke ai te haumitanga.

■ NGĀ MAHI HAUMI

Ngā Moni ka Kuhuna ki te Pēke

Ka inea tuatahitia ngā moni haumi ka kuhuna ki te pēke i runga tonu i te rahi o te moni i kuhuna.

Te Whare, Te Utauta, Te Taputapu

Kei te whare, te utauta me te taputapu ngā karangatanga huarawa e whai ake nei: ngā whakapaipai whare rīhi, ngā taonga noho whare, ngā taputapu IT me ngā taputapu tari.

He mea ine ngā karangatanga huarawa katoa i runga i te utu hoko, otirā, me te tango anō i te hekenga wāriu whakapipi me ngā numanga waimaerotanga.

Ngā Tāpiritanga

Ko te utu o te whare, te utauta, te taputapu rānei, ka kīia he huarawa i ngā wā anake e puta ake ai he hua ōhanga, he hua ratonga rānei i taua mea rā ki Te Taura Whiri i te Reo Māori ā tōna wā, ā, ka taea tōna utu te āta ine mārire.

Mō ngā mahi kāore anō i oti, ka whakaaturia ko te utu hoko kua oti te waimaerotanga te tango, ā, kāore e whakahekea tōna wāriu.

I te nuinga o te wā, mō te whare, te utauta, te taputapu rānei, ka whakaaturia tuatahitia ko tōna utu hoko.

Ngā Tukunga

Ka whakaaturia ngā huanga me ngā numanga i ngā tukunga mā te whakatairite i te moni i riro mai ki te wāriu kawē o te huarawa. Ka pūrongotia te wāriu more o ngā huanga me ngā numanga i ngā tukunga ki te hemihemi, ki te tarepa rānei.

Ngā Utu Whai I Muri

Ko ngā utu ka whai i muri i te rironga mai o tētahi hanga, ka whakaurua ki te pūrawa i ngā wā anake e whakaponotia ana ka rere mai he painga taha ōhanga, taha ratonga rānei i a ia ki Te Taura Whiri i te Reo Māori, ā, e taea ana te utu o te mea rā te āta ine.

Te Hekenga Wāriu

Mō te wāhi ki te whare (hāunga ia te whenua), te utauta me te taputapu, he mea tuhi te hekenga wāriu i runga i te tikanga rārangi torotika. Ka whakakorea haerehia te utu (te wāriutanga rānei) o te huarawa kia tae rawa ki tōna wāriu whakamutunga hei te ekenga o ngā tau e ora pai ana, e tū pai ana a ia. Ko ngā whakaaro mō ngā tau e ora pai ana ngā karangatanga matua o ēnei mea, me ngā hekenga wāriu, e pēnei ana:

- › Whakapainga whare rīhi 20.0% rārangi tōtika (SL)
- › Taonga noho whare 20.0% SL
- › Taputapu tari 20.0% SL
- › Taputapu IT 25.0% SL

He mea whakaheke te wāriu o ngā whakapaipai whare rīhi mō te wā o te rīhi e toe tonu ana, mō te wā rānei e ora pai ana, e tū pai ana aua whakapaipai – ko te mea poto ake o ēnei.

Ko te wāriu e toe ana me te roa e ora pai ana tētahi huarawa, ka tirohia, ka whakatikaina mehemea e tika ana kia whakatikaina, i te mutunga o ia tau pūtea.

■ NGĀ HUARAWA WHAKAWAIRUA

Te Hoko Me Te Waihanga Pūmanawa Rorohiko

Ka whakaurua ngā raihana pūmanawa rorohiko ka riro mai ki te pūrawa, i runga i te āhua o te utu i utua kia riro mai ai, kia tika ai rānei tāna mahi.

Ka kīia he huarawa whakawairua ngā utu e hāngai pū ana ki te hanganga o ngā pūmanawa rorohiko mō ngā mahi tara ā-whare. Ko ētahi o ngā utu hāngai, ko te waihanga pūmanawa rorohiko, ko ngā utu kaimahi, me te hautanga o ngā utu whakahaere e tika ana.

Ka whakaaturia ngā utu whakangungu kaimahi hei whakapaunga i te wā e ara ake ai.

Ka whakaaturia ngā utu tauwhiro pūmanawa rorohiko hei whakapaunga i te wā e ara ake ai.

He pērā anō ngā utu waihanga, tauwhiro i tā mātou pae tukutuku – ka whakaaturia hei whakapaunga i te wā e ara ake ai.

Te Whakaaurupātanga

He mea whakaaurupā te wāriu kawē o tētahi huarawa whakawairua oranga poto i runga i te tikanga rārangi torotika, mō ngā tau e ora ana, e whaihua tonu ana a ia. Ka tīmata te whakaaurupātanga i te wā e wātea ai te huarawa kia whakamahia, ā, hei te tangohanga o te huarawa i ngā pukapuka kaute mutu ai. Ka whakaaturia te utu whakaaurupātanga mō ia tau pūtea ki te hemihemi, ki te tarepa rānei.

Kua pēnei te whakatau tata i te oranga whaihua o ngā karangatanga matua o ngā huarawa whakawairua, me te ōrau whakaaurupātanga e rite ana:

Ngā pūmanawa rorohiko kua riro mai 25.0% SL

■ NGĀ HUARAWA KĀORE E MAHI MONI

Karekau ā Te Taura Whiri i te Reo Māori huarawa hei mahi moni māna. Ka kīia tētahi huarawa he hua mahi moni mehemea ko te mahi moni tāna kaupapa matua.

Te Waimaerotanga o te Whare, te Utauta, te Taputapu, me ngā Huarawa Whakawairua

Ko te whare, ngā utauta, ngā taputapu me ngā huarawa whakawairua e puritia ana i runga i te utu hoko, ā, kāore i mutunga kore ngā rā e ora pai ana aua mea rā, ka arotakea mō te tūpono kua waimaero ina pā he āhuatanga e whakaarotia ai tērā pea e kore e hoki mai te katoa o te rahinga kawē. Ka whakatauhia te numanga waimaero i runga i te nui ake o te rahinga kawē o te huarawa i te rahinga ratonga tērā e hoki mai. Ko te rahinga ratonga tērā e hoki mai, ko te mea nui ake o te wāriu tōkeke whai muri i te tangohanga o ngā utu mō te hoko atu, me te wāriu i te wā e whakamahia ana.

Whakatauria ai te wāriu whakamahi i runga i te utu hoko o te mea hou kua oti tōna wāriu te whakaheke ki tērā e tika ana, i te utu rānei ki te āta whakahou, i te waeine ratonga rānei. Ko te mea o ēnei e tika ana, kei te āhua tonu o te āhua o te waimaerotanga me te wātea mai o ngā pārongo e rite ana.

Mehemea he nui ake te rahinga kawē o te huarawa i te rahinga ratonga ka hoki mai i te hokonga atu, ka kīia kua waimaero te huarawa, ā, ka whakaheke te rahinga kawē ki tērā e hoki mai me i hokonga atu. Ko te tapeke o te numanga i te waimaerotanga, ka tuhia ki te hemihemi, ki te tarepa rānei.

Waihoki, ki te huripokina tētahi numanga waimaerotanga, ka whakaaturia anō tēnei ki te hemihemi, ki te tarepa rānei.

■ NGĀ NAMA KIA UTUA ATU

Tuhia ai ngā nama kia utua atu i te wā poto ki te uara mata o tēnā, o tēnā.

■ NGĀ WHAKAWHIWHINGA KAIMAHI

Ngā Whakawhiwhinga Kaimahi Aupoto

Ko ngā whakawhiwhinga kaimahi me whakaea i roto i te 12 marama i muri i te ekenga o te wā i mahi ai te kaimahi, he mea ine i runga i ngā whakawhiwhinga tāpiripiri, i runga anō i ngā pāpātanga utu o taua wā tonu. Kei roto ko te whakaputunga o ngā utu ā-tau, utu ā-hāora rānei tae noa ki te rā whakaatu tūnga pūtea, me ngā rā matangaronga ā-tau kāore i pau i taua rā.

Ngā Whakawhiwhinga Kaimahi Auroa

Ko te whiwhinga kaimahi ko tōna whakaeatanga kei tua o te 12 marama i muri i te mutunga o te mahi a te kaimahi, pēnei i te matangaronga mahiroa, me te takoha rītāia, he mea tātai mā te huarahi whakariterite. He mea whakatau ēnei tātaitanga i runga i:

1. ngā whakawhiwhinga i ngā rā kei tua ka haupū mai ki te kaimahi, i runga i te āhua o ngā tau kua mahi rā ia, ngā tau e toe ana i mua i te whakawhiwhinga, te kaha tūpono ka tae te kaimahi ki te wā whakawhiwhi, me ngā kupu kirimana mō te whakawhiwhinga;
2. te wāriu o nāiane i o ngā kapewhiti kei tua, he mea whakatau tata.

Te Whakaatu i ngā Whakawhiwhinga Kaimahi

Ka kīia te matangaronga ā-tau me te matangaronga mahiroa ngita he taunahatanga o tēnei wā. Ko te matangaronga mahiroa kāore i ngita me ngā takoha rītāia ko te tikanga ka ea i roto i te 12 marama mai i te rā whakaatu tūnga pūtea, ka kīia he taunahatanga o tēnei wā. Katoa ērā atu whakawhiwhinga kaimahi, ka kīia he taunahatanga o raurangi.

■ NGĀ KAUPAPA PENAPENA MONI MŌ TE KAUMĀTUATANGA

Ngā Kaupapa Moni Kuhu kua Tautuhia

Ko ngā here mō ngā moni ka kuhuna ki a Kwisaver me te State Sector Retirement Savings Scheme, ka kīia he kaupapa penihana moni kuhu kua oti te tautuhi, ā, ka whakaaturia hei whakapaunga i te hemihemi, i te tarepa rānei i te wā e ara ake ai.

■ TE TŪTANGA

He pūtea kotahi te tūtanga; i tēnei tau, he takoha pūrawa kei te tūtanga, arā, ko te toenga o te Tahua o Mā Te Reo. Ko te tūtanga te mea ka toe mai ina tangohia ngā taunahatanga katoa i ngā huarawa katoa. Ka wehewehea te tūtanga ki ēnei karangatanga e whai ake nei:

- › ngā takohatanga pūrawa
- › te hemihemi/(tarepa) whakapipi
- › te wāriu tōkeke o roto mai i ētahi atu tāpuinga whiwhinga, whakapaunga whānui.

■ TE TĀKE HOKOHOKO

Katoa ngā mea e whakaaturia ana ki ngā tauākī pūtea, kāore i tāpiria mai te tāke hokohoko, hāunga anō ngā nama kia utua mai me ngā nama kia utua atu – kei roto kē te tāke hokohoko i ērā rahinga. I ngā wāhi kāore e hoki mai te tāke hokohoko hei tāke kōkuhu mai, ka kīia he wāhanga tonu nō te huarawa, nō te whakapaunga rānei e hāngai ana.

Ko te rahi more o te tāke hokohoko ka tae mai i a IRD, ka utua atu rānei ki a IRD, ka kuhuna ki ngā nama kia utua mai, kia utua atu rānei, i te tauākī tūnga pūtea.

Ko te tāke hokohoko more ka utua atu, ka tae mai rānei i a IRD, tae atu ki te tāke hokohoko e hua ake ana i ngā mahi haumi, takapūtea, ka kīia he kapewhiti whakahaere more i te tauākī kapewhiti.

Ka whakaaturia ngā paihere me ngā whakawhirinakitanga me te kore e whakapiri atu i te tāke hokohoko.

■ TE TĀKE I NGĀ MONI WHIWHI

He mana tūmatanui Te Taura Whiri i te Reo Māori. Me te aha, kāore ia e mate ki te utu tāke i āna moni whiwhi. Koia rā te take i kore ai e tāpuia he moni hei utu tāke moni whiwhi.

■ NGĀ TĪTARINGA PŪTEA

He mea whakarite ngā kōrero pūtea i runga anō i te NZ GAAP, e whakamahia ana i ngā kaupapa-here kaute e rere tahi ana me ērā i whakamanaia e ngā Kaiwhiri i te takanga o ēnei tauākī pūtea.

■ TE TIRITIRINGA UTU

Kotahi anō te karangatanga tutukinga a Te Taura Whiri i te Reo Māori, engari he maha ngā tutukinga/whāinga. E kitea ana ēnei i te Tauākī Kawatau mō ngā Tutukinga.

Ko ngā utu arorangi, koirā ngā utu i ahu katoa mai i te whāinga/tutukinga kotahi. Ko ngā utu autaki, koirā ngā utu tē taea te tautohu mārika, e nui ake ai ngā painga i ngā ngoikoretanga ohaoha, i ahu mai i tētahi whāinga/tutukinga kotahi. Ko ngā utu arorangi, ka tukuna arorangi atu ki te/ngā whāinga/tutukinga e tika ana. Ko ngā utu autaki ia, ka tukuna ki ngā whāinga/tutukinga i runga i ngā mea e uruhi ana i ngā utu, ngā kawenga kōpūtahi me ngā pārongo whakamahi/whakapau e wātea ana.

1.4 Ngā Whakatau Tata Hira me ngā Whakapae Hira i ngā Mahi Kaute

I te whakaritenga mai o ēnei tauākī pūtea, ka oti i Te Taura Whiri i te Reo Māori ētahi whakatau tata me ētahi whakapae mō ngā rā e heke mai nei.

Tērā tonu pea ka rerekē ēnei whakatau tata me ngā whakapae i ngā āhuatanga tūturu ka eke. He rite tonu te tiroiro i ngā whakatau tata me ngā whakapae, ka mutu e whai ana i ngā tauira kua kitea i mua me ētahi atu āhuatanga, tae atu ki ngā whakapae whai takenga mō ngā rā kei tua.

Ko ngā whakatau tata me ngā whakapae e nui ana te tūpono ka mate tā mātou whakatika i ngā rahinga kawae o ngā hua me ngā taunahatanga ā te tau pūtea e heke mai nei, e kōrerotia ana i raro nei.

Te Whakatau Tata i te Roa e Pai Ana te Whare, te Utauta, te Taputapu, me ngā Wāriu Hurumutunga o Tēnā, o Tēnā

I ia rā whakaatu i te tūnga pūtea, ka arotakea te oranga whaihua me ngā wāriu hurumutunga o te whare, ngā utauta me ngā taputapu. He maha ngā āhuatanga hei whakaaro ake ina whakaaturia te hāngai o ngā whakatau tata o te oranga whaihua me te wāriu hurumutunga o te whare, ngā rawa me ngā taputapu, pērā i te āhua tonu o te huarawa ki te whāwhā atu, ki te titiro atu, te roa e tika ana kia whakamahia te huarawa e Te Taura Whiri i te Reo Māori, me te nui o te moni e tika ana kia hoki mai i te hokonga atu o te huarawa ā tōna wā.

Ki te hē te whakataua tata i te roa e ora pai ana, i te wāriu hurumutunga rānei, ka tītaha te whakapaunga hekenga wāriu ka whakaaturia ki te hemihemi, ki te tarepa rānei, me te rahinga kawae o te huarawa i te tauākī tūnga pūtea. Hei whakaiti ake i te noho mōrearea i te kore e mōhio pū ki te whakataua tata e tika ana, ka whāia e Te Taura Whiri i te Reo Māori ēnei mahi:

- › ka āta tirohia ā-kanohi e pēhea ana te āhua o ngā huarawa
- › ka takoto he hōtaka hoko huarawa hou hei whakakapi i te mea tawhito
- › ka arotakea ngā utu e hokona ai ētahi huarawa 'ringarua' āhua rite
- › ka tātarihia ngā huarawa kua hokona atu i mua atu i tēnei

Kāore ā Te Taura Whiri i te Reo Māori whakarerekētanga nui i ngā whakapae o mua mō te āhua ki ngā oranga whaihua me ngā wāriu hurumutunga.

1.5 Ngā whakataua hira i roto i te whakahāngaitanga o ngā kaupapa-here kaute

Anei ngā whakataua hira a te tumu whakahaere mō te wāhi ki te whakahāngaitanga o ngā kaupapa-here kaute:

■ NGĀ KARANGATANGA RĪHI

Hei whakataua iho he rīhi taha pūtea rānei, he rīhi taha whakahaere rānei tētahi whakaaetanga rīhi, me āta whiriwhiri mehemea ka whakawhitia rā roto i te whakaaetanga te nuinga o ngā mōreareatanga me ngā painga ki Te Taura Whiri i te Reo Māori, karekau rānei.

Me whiriwhiri ēnei āhuatanga e whai ake (me ētahi atu): te wāriu tōkeke o te huarawa e rīhitia ana, te oranga ōhanga o taua huarawa, mehemea me kuhu he kōwhiringa whakahou ki te wā rīhi, ā, me te whakataua i te pāpātanga whakaheke utu e tika ana hei tātai i te wāriu o nāianei o ngā utu rīhi mōkito. Ki te whakataua he rīhi taha pūtea, ka whakaaturia te huarawa ki te tauākī tūnga pūtea i raro i te karangatanga 'whare, utauta, taputapu'. Engari ki te whakataua he rīhi whakahaere, kāore e whakaaturia hei huarawa.

Kua whiriwhiria e Te Taura Whiri i te Reo Māori te karangatanga tika mō āna rīhitanga taputapu, ā, oti ana te whakataua he rīhi whakahaere te katoa.

2. Ētahi Atu Whiwhinga

2020–21 Tūturu		2021–22 Tūturu
\$		\$
50,244	Ētahi atu whiwhinga	2,486
50,244	Te katoa o ngā whiwhinga i wāhi kē	2,486

3. Utu kaimahi

2020–21 Tūturu		2021–22 Tūturu
\$		\$
3,158,771	Utu ā-tau, ā-hāora	3,919,483
194,802	Ētahi atu whakapaunga taha kaimahi	279,168
114,732	Takoha a te kaituku mahi ki te mahere moni kuhu kua tautuhia	138,772
41,245	Pikinga/(hekenga) i ngā whakawhiwhinga kaimahi	139,855
3,509,550	Te katoa o ngā utu taha kaimahi	4,477,278

Kei roto i ngā takoha a te kaituku mahi ki ngā mahere moni kuhu kua tautuhia, ko ngā takoha ki a KiwiSaver me te State Sector Retirement Savings Scheme.

4. Whakapunga taha whakahaere

2020–21 Tūturu		2021–22 Tūturu
\$		\$
61,100	Ngā utu ki Mana Arotake Aotearoa mō te arotakenga o ngā tauākī pūtea	64,800
54,772	Hāereere kaimahi	39,292
116,405	Pānui whakatairanga	228,388
4,500	Utu mātanga	-
2,002,273	Whakahaere tari	2,470,013
1,925,414	Ringa kirimana	2,490,891
7,747	Whakapaunga whānui	4,852
20,911	Utu tānga	18,871
423,896	Rihi	425,660
4,617,018	Te katoa o ngā whakapaunga taha whakahaere	5,742,767

5. Te moni ukauka me ōna ritenga

2020–21 Tūturu		2021–22 Tūturu
\$		\$
114,225	Moni i te pēke, moni i te ringa	69,823
6,903,924	Ōna ritenga – pūtea tononoa	9,296,143
7,018,149	Te katoa o ngā moni ukauka me ōna ritenga	9,365,966

Ko te wāriu kawē o ngā moni i kuhuna ki te pēke mō te toru marama iti ake rānei, e kātata ana ki te wāriu tōkeke o aua moni.

6. Te whare, te utauta, te taputapu

E whai ake nei ngā koninga mō ia karangatanga whare, utauta, taputapu:

	Whakapainga Whare Rihi \$	Taonga Noho Whare \$	Taputapu IT \$	Taputapu Whare \$	Whakaratonga WIP \$	Tapeke \$
Utu wāriutanga						
Tapeke i te 1 o Hōngongoi 2020	736,045	242,908	471,377	13,872	-	1,464,202
Tapeke i te 1 o Hōngongoi 2021	1,128,770	285,071	478,514	24,422	-	1,916,776
Tāpiringa	3,980	21,244	194,657	20,868	94,618	335,367
Tukunga	-	-	(2,707)	-	-	(2,707)
Tapeke i te 30 o Pipiri 2022	1,132,750	306,315	670,464	45,290	94,618	2,249,436
Hekenga wāriu whakapipi						
Tapeke i te 1 o Hōngongoi 2020	522,268	225,487	368,445	12,447	-	1,128,645
Tapeke i te 1 o Hōngongoi 2021	630,695	239,208	405,080	14,974	-	1,289,955
Whakapaunga hekenga wāriu	119,996	17,845	82,022	4,379	-	224,242
Whakakorehanga i te tukunga atu	-	-	(1,715)	-	-	(1,715)
Tapeke i te 30 o Pipiri 2022	750,691	257,052	485,386	19,353	-	1,512,483
Rahinga kawē						
I te 1 o Hōngongoi 2020	213,777	17,422	102,932	1,426	-	335,557
I te 30 o Pipiri me te 1 o Hōngongoi 2021	498,075	45,863	73,435	9,447	-	626,820
Tapeke i te 30 o Pipiri 2022	382,058	49,263	185,077	25,937	94,618	736,953

Kāore he here i runga i te whare, ngā utauta me ngā taputapu a Te Taura Whiri i te Reo Māori, i runga rānei i ngā whare, ngā utauta, ngā taputapu kua tāpuia hei taituarā mō ngā taunahatanga. I arotakea te whare, te utauta me te taputapu i te 2021-2022, ā, kāore i kitea he waimaerotanga.

7. Ngā huarawa whakawairua

	Pūnamawa hou \$	WIP-pae tukutuku \$	Tapeke \$
Utu wāriutanga			
Tapeke i te 1 o Hōngongoi 2020	411,885	-	411,885
Tapeke i te 1 o Hōngongoi 2021	411,885	-	411,885
Tāpiringa	204,746	224,178	428,924
Tukunga	-	-	-
Tapeke i te 1 o Hōngongoi 2022	616,631	224,178	840,809
Hekenga wāriu whakapipi			
Tapeke i te 1 o Hōngongoi 2020	358,442	-	358,442
Tapeke i te 1 o Hōngongoi 2021	396,380	-	396,380
Whakapaunga hekenga wāriu	17,923	-	17,923
Tukunga	-	-	-
Tapeke i te 30 o Pipiri 2022	414,303	-	414,303
Rahinga kawae			
I te 1 o Hōngongoi 2020	53,443	-	53,443
I te 30 o Pipiri me te 1 o Hōngongoi 2021	15,505	-	15,505
Tapeke i te 30 o Pipiri 2022	202,327	224,178	426,505

Kāore he here i runga i te rangatiratanga o ngā huarawa whakawairua a Te Taura Whiri i te Reo Māori, i runga rānei i ngā huarawa whakawairua kua tāpuia hei taituarā mō ngā taunahatanga. I arotakea ngā pūmanawa rorohiko hou i te 2021-2022, ā, kāore i kitea he waimaerotanga.

8. Ngā nama kia utua atu

2020–21 Tūturu \$		2021–22 Tūturu \$
29,619	Te hunga e noho nama atu ana mātou	254,675
499,808	Whakapaunga takahuihui	169,192
529,427	Te katoa o ngā nama kia utua atu	423,867

Kāore e rere he huamoni i te taha o ngā nama hokohoko me ērā atu nama kia utua. Ko te tikanga, ka utua i roto i te 30 rā. E kātata ana te wāriu kawae o ngā kaituku nama mai me ērā atu nama kia utua ki te wāriu tōkeke o aua hanga.

9. Ngā whakawhiwhinga kaimahi

2020–21 Tūturu		2021–22 Tūturu
\$		\$
	Te tiri o nāianeī	
97,643	Utu ā-tau, ā-hāora takahuihui	146,013
178,371	Matangaroa ā-tau	266,034
276,014	Te katoa o te tiri o nāianeī	412,047
	Te tiri kei tua	
2,982	Matangaronga mahiroa	6,804
2,982	Te katoa o te tiri kei tua	6,804
278,996	Te katoa o ngā whakawhiwhinga kaimahi	418,851

10. Ngā paihere

2020–21 Tūturu		2021–22 Tūturu
\$		\$
18,445	Kāore i roa ake i te kotahi tau	16,502
45,542	He roa ake i te kotahi tau, engari kāore i roa ake i te rima tau	43,560
63,987	Te katoa o ngā paihere rīhi whakahaere tē taea te whakakore	60,061
418,872	Kāore i roa ake i te kotahi tau	43,501
43,501	He roa ake i te kotahi tau, engari kāore i roa ake i te rima tau	-
462,373	Te katoa o ngā paihere rīhi whare tē taea te whakakore	43,501

Ko ngā utu mōkito tāpiripiri ki tua me mātua utu i raro i ngā rīhi tē taea te whakakore me ngā paihere rīhi whare, kei runga ake nei.

I hainatia he rīhitanga whare hou i te 25 o Huitanguru 2016, e ono tau te roa o te rīhitanga. Nō te 1 o Hereturikōkā 2016 i tīmata ai te rīhitanga, ka hūnuku tonu atu Te Taura Whiri ki te papa 11. Ka hainahia he rīhi tāpiri i te 8 o Hereturikōkā 2019 mō tētahi wāhanga o te papa iwa.

11. Ngā kurutete ki ngā rōpū whai pānga mai

2020–21 Tūturu		2021–22 Tūturu
§		§
<i>Kaiwhiri</i>		
83,925	Ngā taiutu	82,800
0.85	Te ritenga hei tūranga wā-poha	0.99
<i>Kāhui Hautū</i>		
990,183	Ngā taiutu	1,001,837
4.82	Te ritenga hei tūranga wā-poha	5.42
1,074,108	Te katoa o ngā taiutu tumu whakarae	1,084,637
5.67	Te ritenga hei tūranga wā-poha	6.41

He hinonga Te Taura Whiri i te Reo Māori nā te Karauna.

Kāore i āta whakaaturia ngā whakawhitiwhiti ki ngā rōpū whai pānga mai i ū ki ngā tikanga māori o te ringa whakarato me te kiritaki/ringa whiwhi, mō ngā whakaritenga me ngā here kāore i nui ake, i te iti iho rānei te arotau i ērā ka hāpaitia e Te Taura Whiri i te Reo Māori me i mahi tahi ia ki taua rōpū, mō aua take anō, i runga i te tikanga 'whanganga'.

Waihoki, kāore i āta whakaaturia ngā whakawhitiwhiti ki ētahi atu whakahaere kāwanatanga, Hinonga Karauna rānei hei whakawhitiwhiti ki ngā rōpū whai pānga mai i ngā wāhi e ū ana ki ngā tikanga māori mō te mahi tahi ki ngā whakahaere kāwanatanga, me te hāpaitia anō o ngā here me ngā whakaritenga e tika ana mō aua whakawhitiwhiti.

Kāore tētahi kaiwhiri i whiwhi utu paremata, tētahi atu painga rānei i tua atu o ana utu kaiwhiri mō te wāhi ki ngā kirimana mātanga.

12. Ngā taiutu kaiwhiri

2020–21 Tūturu		2021–22 Tūturu
§		§
28,800	Ahorangi Rawinia Higgins (Toihau)	28,800
13,500	Charisma Rangipunga (Toihau Tuarua)	13,500
13,500	Wayne Panapa	13,500
13,500	Tākuta Jeremy MacLeod	13,500
13,500	Bayden Barber	13,500
1,125	Hinerangi Edwards	-
83,925	Te katoa o ngā taiutu kaiwhiri	82,800
<i>Mema komiti</i>		
5,400	Darren Beatty	1,800
89,325	Te katoa o ngā taiutu kaiwhiri, mema komiti	84,600

He utu tonu i utua ki ētahi mema komiti i kopoua e te Poari, ehara aua tāngata i te mema o te Poari i te tau pūtea ka taha. Kāore tētahi Kaiwhiri i whiwhi moni paremata, tētahi atu hua rānei e pā ana ki te whāmutunga o tāna mahi (2020–21: karekau). Kua tikina e Te Taura Whiri i te Reo Māori he inihua Taunahatanga, Kaupare Raru Ngaio mō ngā Kaitaki me ngā Āpiha i te tau pūtea ka taha, mō te wāhi ki ngā taunahatanga me ngā utu ki ngā Kaiwhiri me ngā kaimahi.

13. Ngā taiutu kaiwhiri

2020–21 Tūturu	Te Katoa o ngā Taiutu kua Utua, kia Utua rānei	2021–22 Tūturu
\$	\$'000	\$
-	100–109	1
4	110–119	2
-	120–129	3
-	130–139	-
-	140–149	1
1	150–159	-
-	160–169	2
1	170–179	2
1	180–189	1
-	190–199	-
-	200–209	-
-	210–219	-
1	220–229	-
1	230–239	1
9	Te katoa o ngā kaimahi he neke atu i te \$100,000 te utu	13

I te tau mutu 30 Pipiri 2022, e rua ngā kaimahi (2020–21: kotahi) i whiwhi utunga me ētahi atu takuhe e pā ana ki te whakamutunga o te mahi, ko te tapeke ko te \$35,330 i te 30 Pipiri 2022 (2020–21: \$63,750).

14. Ngā hanga whakanao pūtea

2020–21 Tūturu		2021–22 Tūturu
\$		\$
	Ngā huarawa taha pūtea, he mea ine i runga i te utu whakaurupā	
6,903,924	Ngā moni ukauka me ōna ritenga	9,296,143
6,903,924	Te katoa o ngā huarawa taha pūtea, he mea ine i runga i te utu whakaurupā	9,296,143
	Ngā taunahatanga taha pūtea, he mea ine i runga i te utu whakaurupā	
529,427	Ngā nama kia utua atu (hāunga ngā whiwhinga tōmua, ngā tāke kia utua, me ngā tahua kua tae mai he here anō kei runga)	423,867
529,427	Te katoa o ngā taunahatanga taha pūtea, he mea ine i runga i te utu whakaurupā	423,867

15. He whakamārama mō ngā tihoinga tawhiti i te pūtea i whakaritea

Kei raro nei e rārangi mai ana ngā tihoinga nui i ngā whakapaunga pūtea i whakaritea, i tāia hoki ki te Tauākī Kawatau mō ngā Tutukinga.

Te Tauākī Whiwhinga Whānui

■ TE KATOA O NGĀ WHIWHINGA

Ko te \$0.301 miriona te iti ake o ngā whiwhinga tapeke i tērā i whakaritea. Ko te take matua i pērā ai, ko te whakatau iho me whakahaere kē ētahi kaupapa ki te ao tuihono, me te aha, kāore mātou i tonu pūtea hei āwhina i te whakahaerenga. Nā te ngau a KOWHEORI-19 i pērā ai te whakatau.

■ TE KATOA O NGĀ WHAKAPAUNGA

He iti ake ngā whakapaunga tapeke i tērā i whakaritea, ko te \$2.974 miriona te iti ake. Ko te take matua i pēnei ai, ko te iti ake o ngā utu whakahaere i tērā i whakaritea. I tōmuri hoki te waitohutanga o ētahi kirimana ICT (Hangarau Whakamōhio), kirimana rangahau, ā, i whakakorea, i kawe rānei ki te aka tuihono ētahi kaupapa Maihi Karauna, i iti ake ai te pūtea i tohaina

Te Tauākī Tūnga Pūtea

■ MONI UKAUKA, MONI PĒKE

I nui ake te moni ukauka me te moni pēke i tērā i whakaritea – \$3.139 miriona te nui ake. I pēnei ai, nā te iti ake o ngā utu whakahaere i tērā i whakaritea.

16. Ngā whakawhirinakitanga

Kāore he taunahatanga whakawhirinaki i te rā pūrongo (2020–21: \$kore).

17. Ngā āhuatanga i pā i muri i te rā whakaatu i te tūnga pūtea

I muri i te rā paunga o te tau whiwhinga moni i waitohua e te whakahaere he whakaetanga rīhi mō te tari hou i te 24 Hereturikōkā 2022, ā, nō te 27 Huitanguru 2023 i nuku ai ki te tari hou.

Mō te ono tau te rīhi hou mō te \$580,640 i ia tau me ngā matatika whakahou e rua. Ko te toenga uara more o ngā whakapaitanga tari (\$382,058 i te 30 Pipiri 2022) e whakahekea i te tau pūtea 2022–23.

Kāore he ngohe tāpua i muri i te rā paunga o te tau whiwhinga moni.

18. KOWHEORI-19

I āhei ngā kaimahi katoa a Te Taura Whiri i te Reo Māori te mahi mai i ō rātou nā kāinga i te katinga ā-motu. Nō reira he tātakimōri noa ngā whakararu i pā ki ā rātou kawenga o ia rā. E takea mai ana ngā moni a Te Taura Whiri i te Reo Māori i te Karauna, nō reira kāore he pānga kino ki ngā moni i whiwhi ai mātou i te tau kua pahure.





TE TAURA WHIRI I TE REO MĀORI

MĀORI LANGUAGE COMMISSION

