

2022–
2023

Te Pūrongo ā-Tau

TE TAURA WHIRI
I TE REO MĀORI

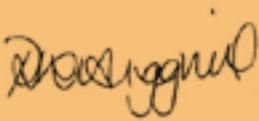
MĀORI LANGUAGE COMMISSION



E te Minita Whanaketanga Māori

Nei rā te mihi kau atu ki a koe.

He manawa reka nō mātou e tāpaea atu nei te pūrongo ā-tau
a Te Taura Whiri i te Reo Māori mō te tau i eke i te 30 o Pipiri 2023.



Ahorangi Rawinia Higgins

Toihau



Charisma Rangipunga

Toihau Tuarua

ISSN 2382-2155 (Tānga – reo Māori)
ISSN 2382-2147 (Tuihono – reo Māori)
Manatārua © nō te Karauna

E pai ana te hoatu tohutoro mō ngā tānga kei raro i te manatārua
o te Karauna, hei aha te kimi whakaaetanga.

Heoi anō, ki te hiahia tārua koe i tēnei pūrongo, me mātua kimi
e whakaaetanga o Te Taura Whiri i te Reo Māori.

Te Kāwanatanga o Aotearoa
New Zealand Government



Ngā Kai o Roto

He kupu nā te Toihau	2	Te Whakatairite ki te Tauākī Whakamaunga Atu	12
He kōrero nā te Tumu Whakahaere	4	He Tūāoma Whakahirahira i te Ara o te Reo Māori	22
Ngā mahi hirahira o te tau 2022-23	6	Ngā Kākā Kura o te Reo 2022	24
Ngā kaupapa i tautokona ki te Tahua Maihi Karauna	8	Te Tauākī Koronga mō ngā Mahi kia Tutuki	26
Te Taiao Rangatiratanga	10	Ngā Maumaharatanga	56
Te Anga Putanga	11	Te Mana Arataki	58
		Ngā Pārongo mō te Ū ki ngā Whakahau	59
		Te Tauākī Whakahaere Pūtea	60
		Te Pūrongo a te Kaiarotake Tū Motuhake	62
		Te Tauākī Noho Haepapa	65
		Ngā Whakamārama i ngā Tauākī Pūtea	70

He kupu nā te Toihau



Tērā ētahi huritau nui o te tau ka hori – mō te reo Māori, mō tōna whenua tupu anō. Koia ērā ko ngā hua o ngā hekenga werawera o ngā toa o te reo nāna nei i whakaaraa te manomano tāngata, i puta ai he panonitanga whakahirahira, mō tātou rā ngā painga. Nā rātou i rerekē ai te ahunga o ngā rā ki tua i Aotearoa. Ā, tēnei mātou, Te Taura Whiri i te Reo Māori te manawarū nei ki te whakatutuki haere tonu i tā aua toa rā i wawata ai.

Nō te Mahuru i whakanuia ai te 50 tau mai i te Petihana Reo Māori, i kawea atu ai ngā waitohu o te 30,000 ngahoro o ngāi Aotearoa ki te aroaro o te pāremata. He mea kōkiri te petihana nei e Ngā Tamatoa me Rangatōpū mō Te Reo Māori, ko tōna kaupapa, he tono kia whakanuia te reo Māori, kia whakaakona anō hoki i ō tātou kura. Kua kotahi rau tau neke atu i taua wā e āta pēhia ana, e kapea ana e te porihanga, me te aha, kua iti iho i te 5 ōrau o te tamariki Māori o aua wā he kōrero Māori. Ka aroha rā te tāmatemate o tō tātou reo.

Nō te 1972 anō hoki te orokotimatanga o ngā taiopenga kapa haka ā-motu.

Tekau tau i muringa mai, kua tuwhera te tatau o te kōhanga reo tuatahi – koia tēnā ko te matapiipi o te ako rumaki a ā tātou tamariki. He marama ruarua i muri mai, ko te pāhotanga tuatahitanga o te hōtaka pitopito kōrero hirahira, o Te Karere.

Ka hipa he ngahuru mā rua tau anō, ko te tāpaenga tēnā o te Kerēme Reo Māori whakangāueue pou, o WAI11, ki te Rōpū Whakamana i te Tiriti o Waitangi e Ngā Kaiwhakapūmau i te Reo. Ki tā ngā kaitāpae, kua hapa i ngā kāwanatanga maha te tiaki i te reo Māori – tēnei hanga e noho taonga nei ki te iwi Māori.

Nō te tau 1987 ka whakamanaia te Ture o te Reo Māori, i whaimana ai ā-ture nei te reo Māori i tōna whenua tupu. Nā taua ture anō, ko te tūnga ake o Te Taura Whiri i te Reo Māori.

I whakanuia te 35 tau mai i te orokohanga o te Ture me tā mātou whakahaere i te Hereturikōkā o tērā tau.

Nō tērā tau anō – i runga i te mahi tahi ki a Te Mātāwai – ka whakahaerehia e mātou Ngā Kākā Kura, hei whakamānawa i ngā pākai reo mō ā rātou whakarirātanga tautini ki te whakaora ake i te reo Māori. He mea whakanui ngā toa takitahi me ngā rōpū nā rātou i puta ake ai ēnei hua nui whakaharahara ki te ao Māori:



- + Te Petihana Reo Māori
- + Te Matatini Society Inc.
- + Te uiuinga reo Māori ā-kāinga a Rangahau Mātauranga o Aotearoa
- + Te Ataarangi
- + Te Kōhanga Reo
- + WAI11 – Te Kerēme Reo Māori i tāpaea ki te Rōpū Whakamana i te Tiriti o Waitangi
- + Te Kura Kaupapa Māori
- + Ngā Wānanga Māori
- + Te Reo Irirangi
- + Te Pouaka Whakaata
- + Te Karapu Māori o Ngāti Rānana

Nōku anō hoki te waimaria nui i whai wāhi au ki te kauhau ki te Huinga Nui o te Kotahitanga o ngā Whenua o te Ao i tū ki Te Āporo Nui i tērā Hakihea. He māmā noa taku kupu ki a rātou. Mō ngā ngahuru tau e hia nei, ka kori ake te iwi Māori ki te whakaaweawe takitini i ngā kāwanatanga ka tūtū mai, otirā, i ngā whakatupuranga o ngāi Aotearoa ka ara mai.

E mōhio pai ana tātou, ko tētahi tino mea ka taea e ngā kāwanatanga o te ao hei tautoko i ō rātou reo taketake, ko te tiki atu i te ture hei tiaki i aua puna mātauranga rētō. Koia kau tā ngā kāwanatanga, waiho mā ngā iwi taketake a tua atu.

Ahorangi Rawinia Higgins

Toihau

He kōrero nā te Tumu Whakahaere



E rau rangatira mā, tēnā tātou katoa.

Arā te whakamaunga nui o te tau 2022-23, ko te whakamānawa i te hunga nāna i hikahika ngā ahi whakarauora i te reo Māori. Inā te huhua o ngā whakataukī mō te anga whakamuri e mārama ake ai te ahunga whakamua. Engari hei āpiti ki tērā, e tika ana anō kia whakamānawatia, kia āta tukua hoki te aroha ki ngā toa o mua o te reo i tū ake – i te wā i rerekē noa atu ai a Aotearoa i tōna āhua o nāianei – i runga i te māia me te ngākau titikaha, kia tae mai ai he painga ki a tātou i ēnei rā.

‘Titiro whakamuri; kōkiri whakamua.’

Koirā te whakaaro i te whakanuinga o te 50 tau mai i te tāpaenga o te Petihana Reo Māori. Ko ētahi o ngā huānga tuatahi o Ngā Tamatoa me te Rangatōpū o Te Reo Māori kua mene ki te pō, engari i hoki wairua mai ki te hui i tū ki te Whare Pāremata, he hui i pupuke ai te aroha, he manotini tonu i tae atu. Ko ētahi i reira, ko te Minita Whanaketanga Māori, ko te Pirimia Tuarua, me te maha noa atu o ngā kanohi tōrangapū o tēnā taha, o tēnā moka. Ko te wahine ahurei nei ko Moana Maniapoto – tērā kaikōkiri kaha i te kaupapa Māori – ko ia te reo tātaki o te rā. Rere ana tērā te waiata, te kupu whakamahara, me te wairurutu o te kamo.

Toritori ana tō mātou nei whare me ērā atu o whare kē i rūpeke atu ki te raupī i ngā mea o Ngā Tamatoa me te Rangatōpū o Te Reo Māori i tae ake. Koropiko ana mātou i te aroaro i ērā taniwha. Ko rātou hoki ngā kanohi ora o te hitori o mua o te reo Māori, koirā tō mātou waimarie nui ki te noho tahi ki a rātou i taua rā. He whakamahara mai hoki taua hui ki a tātou katoa e whakaora nei i te reo, he mea nui te whakapapa, ā, kua rā e wareware te wāhi i ahu mai ai tātou i a tātou ka whiriwhiri i ngā takahanga ki tua.

Kia whakamihia ake i konei ērā whakahaere katoa i whakatieke ki te whakatinana i te kaupapa, mātua rā a Te Amokura Consultants. Nāku te karanga tōmuri, ko tā rātou he tere whakaō mai. Me kore ake rātou i whakaritea ai tērā hui nui whakaharahara kia tū pai mai i roto i te whitu wiki noa!

Ka urupā haere te tau 2022, e mau tonu ana taua wairua ātaahua i Ngā Kākā Kura, i te hui i tū ki Tāmaki-makau-rau ki te tuku tohu whakamānawa ki ērā o roto i ngā tau e 50 i waihanga i ngā pou tuatahi o te whare o te reo Māori e tū ana i ēnei rā. Mai i Ngā Tama Toa me te Rangatōpū o Te Reo Māori ki te Kōhanga Reo, ki te Kura Kaupapa Māori, ki ngā mahi pāpāho reo Māori, he pō whakanui i ngā manu taiea o te reo Māori. Tū ake ana tēnā me tēnā ki te kōrero i ngā pakanga, i ngā toanga, i ngā huanga o ā rātou whakapaunga kaha. Me te whakamahara mai anō hoki he mahi nui tonu mā rau ringa o nāianeī. Titiro whakamuri; kōkiri whakamua.

Ko tētahi atu kaupapa nui o te tau ka taha, ko te whakaputanga o ngā raraunga mō te reo Māori i takea mai i te Patapatainga Pāpori Whānui o te 2021, i whakahaerehia e Tatauranga Aotearoa. E ai ki taua patapatainga, kua piki te tokomaha o ngāi Māori e kī ana e āhua pai ana tā rātou kōrero Māori ki te 30 ōrau o te taupori Māori. Ko te tokomaha o ngāi Aotearoa whānui e kī ana e āhua pai ana tā rātou kōrero Māori, kua piki anō hoki, ki te 8 ōrau. He waitohu pai rawa atu tēnei mō te oranga o te reo Māori; i te 2013, e 21 ōrau noa iho o ngāi Māori, ā, e 3 ōrau noa iho o ngāi Aotearoa whānui, i pērā te kōrero. Mō ētahi o aku hoa mahi, he uaua te whakapono kei te pērā rawa te ora o te reo; me kite rawa rātou i ētahi atu tohu e whakaae ai rātou kua mārō te haere i te ara whano ki te kotahi miriona kaikōrero i te reo Māori! Heoi anō, mā te titiro kōmuri e kite ai tātou i te roa o te haere ā mohoa noa nei, me te tupu o te ngākau whiwhita i a tātou ka kauneke ki tua.



Kāore i mahea, i māmā te ara ki tua i ngā wā katoa, engari ki te pērā tō tātou mārohirohi, tō tātou titikaha me ērā kua para i te huarahi – mā reira rawa e angitu ai. E kore e wareware i a au tā Kōkā Iritana i mea mai ai, i a au e whakaaro ana ki te tautuku: ‘Ehara tēnei i te mahi māmā. He uaua tonu, me kimi rawa te kaha e tū tonu ai. Me he taonga e tika ana anō kia pakangahia, kāti, he taonga anō tērā kāore e māmā te rironga mai.’ Me pēwhea hoki e whakahētia ai ngā kupu mātau a tēnei kahurangi o te reo Māori? Ko āna kupu ērā ki te whakatītina i a au ka uaua ana te ara.

Ka karapa whakamuri au ki te tau ka hori, ka mihi rawa a roto i te mimiti kore o te kaha o aku kaimahi i ā rātou mahi, e whena ai te tūāpapa kua hangaia mō te reo Māori. Ka mihia ana au mō ā mātou mahi, ka tere tonu taku utu atu, ‘e, ko taku toa, he toa takitini’. Tēnā koutou e hoa mā. Kāore e mutu te mihi me te aroha.

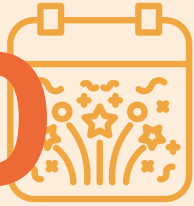
Kia kaha te reo Māori!

Ngahiwi Apanui
Tumu Whakahaere

Ngā Mahi Hirahira o te 2022-23

40

ngā kaupapa i tautokona



575

ngā tāngata i tae atu ki te whakarauikatanga reo o Uhi Tai

244

ngā tāngata i kawea e rātou ngā Whakamātautau Kimi Taumata



I mahi tahi hoki mātou ki ngā pūtahi o te rāngai tūmatanui ki te whakatū i te hui whakanui i te 50 tau mai i te tukunga o Te Petihana, i tū ki te Whare Pāremata, i kai mai ai ngā kanohi o te

I tautoko mātou i Te Matatini, koia te kaupapa tuatahi i whakaterea ki Te Moana-nui-a-Kiwa i te Ngahurutanga Tau o te UN mō ngā Reo Taketake o te Ao, ā,

1.8

miriona tāngata i mātakitaki, huri i te ao

2.6

miriona tāngata



240

ngā kupu hou i tāraia hei morimori i te tupu o te reo Māori

109

ngā karahipi kura tuatoru i whakawhiwhia

483

ngā tāngata i whai wāhi ki ngā hui whakamahere reo





Te whakanui o te huritau 50 o Te Petihana, i te Pāremata



Te Kapa Haka o Te Whānau-a-Apanui - ngā toa whakaihūwaka o Te Matatini 2023



Ngā Kaupapa i Tautokona ki te Tahua Maihi Karauna



Toi whakaari

**Pourakahua: He whakaari reo
Māori mā te tamariki**

**Ngā Tohu Puoro mō ngā Waiata
Māori 2022**

ORO – Te Anga Rautaki a APRA

**Waiata Anthems –
te hanganga hou o AEIOU**

**Tūtira Mai – He Konohete Mahi
Moni mō te Tūpuhi Kino o
Gabrielle**

**Te Matatini – Herenga Waka,
Herenga Tangata 2023**

Taikura Kapa Haka 2023

**Purapura Whetū – Stars
of Matariki**

Hākinakina

**Te Waka Ama –
Ngā Whakataetae Hoe Roa**

**JDC Junior World Darts
Championships 2022**

**Te Waka Ama –
Ngā Whakataetae Hoepoto
2023**

**Te Tonamana a Poitūkohu
Māori Aotearoa 2023**

Te Puni Reo Poitarawhiti 2023

**Te Awe Wellington Māori
Business Network 2022
Charity Golf Classic**

**Te kapa poitarawhiti o
Te Wānanga o Raukawa
Pulse 2023**

Waimarino Shears 2023

Ngā Taiopenga

Waituhi o Tāmaki

Ako Ararau Māori Expo 2023

Te Hui Hokorua o te Kōhanga
Reo 2022

Te Huritau 50 o te Petihana
mō te Reo Māori

Te Ahurea me te Auaha

2022 Best Design Awards

I Will Not Speak Māori

I am Hana

Te Reo Māori

2023 M9 Taku ihi! Taku wehi! Taku wana!
Kapa haka: A performer's perspective

Te Huritau 60 o Toitū Kaupapa Māori
Mātauranga

2022 M9 Whiua ki te ao!

Matariki Hunga Nui

2022 Te Reo ki Tua

Tuia Te Ako 2022 –

He Hui mō ngā Whare Mātauranga
Paetoru Māori

Te Hui Ahurei Reo Māori

Te Wero a Ōuenuku Rene – Te Huritau 50
o te Petihana mō te Reo Māori

Ngā Manu Kōrero

Te Hā Ora

Te Taiao Rangatiratanga



He pārongo mō te rohenga pūtea

E takea mai ana ngā moni a Te Taura Whiri i te Reo Māori i te Rohenga Pūtea: Whanaketanga Māori, i raro i tēnei karangatanga tutukinga:

Whakarauora Reo mō te Motu

- + E whāiti mai ana tēnei rohenga pūtea ki te tautoko i te whakaoranga ake o te reo Māori ki te motu nui tonu, me te whakahaere i Te Taura Whiri i Te Reo Māori.

Ko te tikanga, mā tēnei rohenga pūtea e taea ai te reo Māori te āta whakatairanga, te āta rauhi me te āta whakaora ake, mā roto mai i:

- + ngā mahi tautini a Te Taura Whiri i te Reo Māori
- + te whakatutukinga o tētahi hōtaka rangahau e taupua ana i ngā mahi whakaora i te reo Māori
- + Te Maihi Karauna (Te Rautaki Reo Māori a te Karauna)
- + ētahi kawenga i raro i te ture me mātua kawē ake e Te Taura Whiri i te Reo Māori.



Te Anga Putanga

Te arorau wawaotanga



Ngā arotahinga

Te whakapakari ake i Te Maihi Karauna e pai ai tāna tautoko i Te Whare o Te Reo Mauri Ora

- + Te whai kia kawea ngā mahi whakamahere reo, ine pānga i runga anō i te mōhio
- + Te whakarite hononga/ara wātea e horahia ai ngā mea kua ākona ki tangata kē
- + Te whakatairanga i ngā takoha
- + Te aroturuki me te arotake

Te whakatupu i te tokopae o ngāi Aotearoa e uara ana i te reo Māori, kia ākona ai te reo, kia noho ai te kōrero Māori hei tūtanga o te tuakiri ā-motu tē unuhia

- + Te arataki i ōna anō kaupapa mātāmua
- + Te whakatairanga i ngā kohakoha a te rāngai tūmataiti me ngā hapori

Te waihanga me te whakatairanga rauemi hei tautoko i te whakamahere, i te ako me te kōrero i te reo Māori

- + Te waihanga me te whakatairanga rauemi mō te whakamahere me te ako i te reo Māori
- + Te taupua i te tahua reo Māori
- + Te tono kia whakahaeretia he rangahautanga

Te oke kia mau tonu te tuawhiti o te reo Māori

- + Te rēhita kaiwhakamāori ā-tuhi, ā-waha
- + Te whakangungu kaiwhakamāori ā-tuhi, ā-waha
- + Te whakahaere tuihono i te whakamātautau reo Māori

Ngā koronga

Kua tāpua ake, kua kaha ake te kōrerotanga o te reo Māori e te ratonga tūmatanui.

Kua kaha ake te kōrerotanga o te reo Māori e ngāi Aotearoa.

Kua pai ake te taha whakamahere me te tautoko i te ako me te kōrerotanga o te reo Māori.

Kua tupu te tairite me te tuawhiti o te reo Māori.

Te pānga, taha whakahaere

Ka rongonui, ka mihi hoki Te Taura Whiri i te Reo Māori i Aotearoa i tana tū hei puna whakaaro mātanga, puna rauemi matua anō hoki mō te kāwanatanga, e tautokona ai te whakarauoratanga ake o te reo Māori.



Te Whakatairite ki te
Tauākī Whakamaunga Atu

He kupu mō te Tauākī Whakamaunga Atu



E whā ngā takune rautaki kōtuitui e taki haere ana i ā mātou mahi i te 2020 ki te 2024. Hei āwhina ēnei i a mātou ki te whakariterite i ngā kohakoha me ngā rawa, me kore e tutuki ā mātou whāinga rautaki, ngā pāpātanga, me ngā putanga.

Ko tō mātou koronga nui ki te poipoi i te whanaungatanga ki Te Mātāwai, koia e tuitui ana, e tāwhana ana hoki i ō mātou takune rautaki. E ea ai tō mātou wawata ko Te Mātāwai, arā, Kia Mauri Ora Te Reo, me mahi ngātahi mātou, me tautoko tahi, me ako anō tētahi i tētahi. Waihoki, me kamakama te whaiwhai haere i ngā arawātea hou hei whakaora ake i te reo Māori.

Te Takune Rautaki 01:

Te Whakapakari i Te Maihi Karauna hei Tautoko i Te Whare o Te Reo Mauri Ora

Te whāinga angitu mō te whā tau:

Kia kaha ake te kitea me te kōrerotia o te reo Māori
i te ratonga tūmatanui

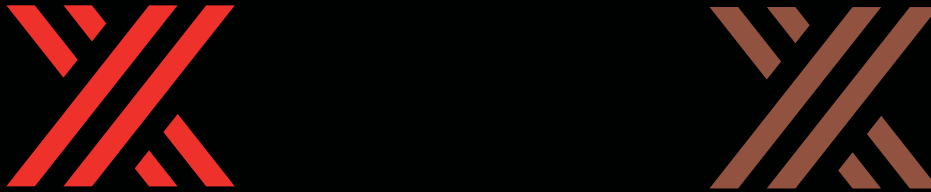
Ko te arotahinga matua o te takune rautaki tuatahi nei, i ahu mai i te whakahau
a te ture kia noho ko mātou ngā kaiārahi i ngā mahi tahi hei whakatinana
i Te Maihi Karauna.

Kua takoto i ngā whakahaere matua o te ratonga tūmatanui ā rātou mahere
reo. Ko tā mātou, he aroturuki i tā mātou mahi tahi ki ngā pūtahi o te rāngai
kāwanatanga i a mātou ka āwhina auroa i ngā pūtahi ki te whakapau kaha tonu,
ki te whakapau rawa tonu, ki te whakapakari tonu i ā rātou whāinga reo
(tirohia te SPE 1.2).

Ko mātou kei te hautū, kei te taituarā hoki i Te Papa Kōrero (ngā hui tahi a
ngā Tumuaki o ngā pūtahi tātaki o te rāngai reo Māori) me Te Tokomatua (ngā
āpiha mātāmua o ngā pūtahi tātaki o te rāngai reo Māori). Ko ēnei rōpū kei te
whakakipakipa i te mahi tahi me ngā kaupapa reo Māori i te ratonga tūmatanui.

I tēnei wā 12 ngā pūtahi tātaki, koia ēnei:

- + Irirangi Te Motu
- + Te Manatū Taonga
- + Tatauranga Aotearoa
- + Te Arawhiti
- + Te Kawa Mataaho
- + Te Māngai Pāho
- + Te Puni Kōkiri
- + Te Tāhuhu o te Mātauranga
- + Te Tari Taiwhenua
- + Te Taura Whiri i te Reo Māori
- + Whakaata Māori
- + me tō mātou hoa haere kōtui, a Te Mātāwai (hei māngai mō Te Maihi Māori)



Ngā tohu angitu

Ka poua he ahunga nahanaha mō te whakaora ake i te reo Māori.

Ka arahina ngā mahi whakaora reo (mā roto mai i Te Papa Kōrero).

He taputapu, he tohutohu whakamahere reo hei ārahi i ngā pūtahi ki te whakariterite i a rātou ki ngā mahi whakaora reo.

He koninga whaka-te-ao-mārama (mai i te Kore ki te Pō, mai i te Pō ki te Awatea).

Ngā kokenga

- + He putuputu tonu te tū o ngā hui a Te Papa Kōrero (ngā tumuaki) me Te Tokomatua (ngā āpiha mātāmua).
- + Kua tokomaha ake ngā huānga o te kāhui, mai i ngā pūtahi e 7 ki te 12.
- + Kua kaha ake te mahi tahi ki ngā kaupapa Maihi Karauna, tae atu ki Te Petihana, ki He Ara Poutama, me Te Reo Māori Workforce.
- + E tohu ana te *Pūrongo ā-Tau a Te Maihi Karauna* kei te piki haere tonu te kaha hāpainga ake o ngā kaupapa reo Māori e ngā pūtahi mātāmua o te rāngai tūmatanui.
- + Kua kaha ake te pūrongotia o ngā kaupapa reo ki ngā pūrongo ā-tau o te rāngai tūmatanui. He koanga ngākau te kite atu i te koni mai a ētahi i te kawenga ngākaurua, kawenga rehurehu i te tau tuatahi ki ngā mahi whakaora reo auaha tonu, māia tonu i muri mai.
- + He mea whakatairanga te rā whakatā hou mō Matariki ki tētahi kēmu kāri mō Matariki. He pukapuka iti hoki mō Matariki i whakaputaina, i tohaina, he rauemi i hua ake i te mahi tahi a Te Manatū Taonga, Te Arawhiti me Tākuta Rangi Mātāmua.

Te Takune Rautaki 02:

Te Whakapiki i te Tokomaha o ngā Aotearoa e Maimoa ana i te Reo Māori, kia Ākona ai, kia Kōrerotia ai hei Wāhi Nui o Tō Tātou Tuakiri ā-Motu

Te whāinga angitu mō te whā tau:

Te whakapiki i te tokomaha o ngā Aotearoa e maimoa ana, e kōrero ana i te reo Māori

I ā mātou kori ki te whakapiki i te mana me te noho tāpua o te reo Māori, ko mātou tēnā ki te tātaki i tētahi o ngā whakanui araara katoa o te motu – i Te Wiki o te Reo Māori – ā, i konā kua hono tahi mātou ki a matahuhua mā, puta noa i Aotearoa.

Kei te whakatupu tonu mātou i ā mātou pae matihiko kia makuru ai ngā hua e puta ana i ngā hononga ki ngā apataki pāhopori me ērā atu apataki. E whiria ana anō hoki e mātou he taukaea toa ki te rāngai kāwanatanga, ki te rāngai tūmataiti, ki ētahi atu hapori anō, kia mōhio ake ai te motu ki te noho taonga mai o te reo, ā, kia kaha ake ai te kōrerotia o te reo.

Ko ngā ara e tutuki ai ēnei, ko te whaiwhai pātuinga ki ngā tāngata rongonui me ngā kaupapa nui hei whakamōrunga i te reo Māori. Hei tauira, e rua wiki i muri i te waipuke kino i te Tūpuhi o Gabrielle, ka whakapuaki a Kīngi Tiare III i tōna pūāroha ki tētahi karere ōkawa, me te whakahua i 'Aotearoa New Zealand', i māori noa ai te rere o tērā hei ingoa mō te whenua nei. Waihoki, ko ana kupu whakatepe, ko te 'kia kaha, kia māia, kia manawanui'. Kātahi ka whakamahia e Te Taura Whiri i te Reo Māori tōna hononga ki Royal Communications ki te tuku whakamāoritanga atu o te karere ōkawa a te Kīngi i te Rā o Waitangi. He tuatahitanga tēnei mō te Kīngi, he tuatahitanga hoki mō te whare ariki o Ingarangi, mai rā anō.



Ngā tohu angitu

Ka kaha ake te maimoatia o te reo Māori.
Ka tokomaha ake ngā toa o te reo Māori.
Ka ariari ake te kitea o te reo Māori.
He koninga whaka-te-ao-mārama (mai i te Kore ki te Pō, mai i te Pō ki te Awatea).

He matakaraapa atu ki ngā kokenga

- + He nui atu i te 40 ngā kaupapa kua tautokona e te Tahua Maihi Karauna, tae atu ki ngā whakataetae hākinakina, ngā mahi a te rēhia, ngā taiopenga, ngā whakarauikatanga, ngā whakataetae kōrero, kapa haka anō hoki.
 - + I whakaarahia ake, i whakahaerehia anō hoki e mātou a Vaka Leo, te huihuinga mō ngā reo o Te Moana-nui-a-Kiwa, ā, i mahi tahi mātou ki te Manatū mō ngā Iwi o Te Moana-nui-a-Kiwa ki te waihanga i tētahi rauemi reomaha mō Matariki.
 - + Kua haere tonu tā mātou whakatenatena i te motu kia hāpai i ngā whakanui o Matariki, mā te whakatairanga i ētahi kawenga ā-whānau i ā mātou pae pāhopori, me ētahi whakaaro mō te whakamānawa i te putanga o te kāhui whetū nei.
 - + He mea taupua te haere a Ahorangi Rawinia Higgins ki te kōrero i te whakaterenga o te Ngahurutanga Tau o te UN mō ngā Reo Taketake o te Ao, i tū ki Parī.
 - + Kua rite tonu te hipa atu i te kotahi miriona tāngata te tokopae e pūrongotia nei e mātou i ia tau e whai wāhi ana ki Te Wā Tuku Reo Māori.
 - + He kawenga nui tā Te Taura Whiri i te Reo Māori i te urupare tokitoki a te kāwanatanga ki a KORONA-19, i ā mātou tohutohu mō te taha ki te reo Māori. Nā tēnei mahi, kua takoto te tauira mō te uru tonu o te reo Māori ki ērā tū āhuatanga, mau ake nei.
 - + I whakaritea kia tū he uiuinga i a Ahorangi Rawinia Higgins rāua ko Ngahiwi Apanui mō *Waka Huia*, hei wāhanga o te hōtaka whakanui i te ekenga o te 50 tau mai i te hainatanga o te petihana, i kōkiritia ai te whakamanatanga me te whakarauoratanga o te reo Māori.
-

Takune Rautaki 03:

Te Waihanga me te Whakatairanga Rauemi Tautoko i te Whakamahere, te Ako, me te Whakamahi i te Reo Māori

Te whāinga angitu mō te whā tau:

Kia hāngai ake, kia tuawhiti ake, kia matahuhua ake ngā rauemi

Tautāwhi ai mātou i te tāngata kia tautohu, kia nanao ake i ngā taputapu me ngā rauemi ka āwhina i a rātou ki te whakamahere, ki te ako, ki te kōrero hoki i te reo Māori. Ko tētahi anō o ā mātou mahi nui, ko te whai kia tāraia, kia horahia hoki he kupu kairangi, he paerewa kairangi e tika ai te āhua o te reo e kōrerotia ana.

Heoi anō, kua anga kē mātou iāianā ki te tautoko i te whanaketanga o ngā whaitua kupu hei whakangata i te hiahia ki te kupu hou, tē aro kē ai ki te ine i ia kupu ka waihangatia. Mā konei e arotahia ai tēnā me tēnā marau, e nui ake ai te tautoko i tōna whanaketanga i te reo Māori.

I tēnei tau ka oti he arotakenga arataki o Te Whare o te Reo Mauriora me Te Maihi Karauna. Koirā ngā pūrongo e rua o ngā pūrongo e iwa i whakaputaina e mātou i te 2022–23. Kei te pahika atu ngā tutukinga taha rangahau i ngā keonga, ā, kei te tuku tonu mātou i ngā pūrongo whaitake tonu, tautika tonu e whaihua ana ki ngā mahi whakamahere, whakatakoto kaupapa-here mō te reo Māori.



Ngā tohu angitu

Ka wātea ake ngā kupu kua whakaūngia te kounga, hei tautoko i te rere o te reo Māori.

Ko te waihanga rauemi e āwhina ana i te tangata ki te whakamahere, ki te ako, ki te kōrero anō hoki i te reo Māori.

He koninga whaka-te-ao-mārama (mai i te Kore ki te Pō, mai i te Pō ki te Awatea).

He matakaraapa atu ki ngā kokenga

- + Kua waihangatia, kua morimoria rānei tōna nei 1000 kupu, hei taupua i te rere o te reo Māori ka kōrerotia ana ngā āhuatanga whāiti me ētahi kaupapa hou.
 - + E rua ngā whakangungutanga whakatauirā mō te reo Māori i whakaterea ki te rāngai tūmatanui. I whakakekoa atu te hunga he tino iti te mōhio, he mōhio kore rānei, tae atu ki ērā kei waenganui te matatau ki te reo.
 - + Mai i te 2019, 15 ngā pūrongo kua puta i a mātou, tae atu ki ōna anō arotakenga me ētahi taputapu i waihanga houtia.
 - + Hei āpiti ki ā mātou kupu hou, arā ētahi rauemi hou e hangaia ana, e tāpiria ana anō hoki ki tā mātou pae tukutuku hei kapo noa ake mā te hapori kōrero, ako hoki i te reo Māori.
 - + Mai i te 2021, 191 ngā karahipi kua whakawhiwhia i te hōtaka mātauranga ko Te Rito te ingoa, he kaupapa haere pātui nā mātou me Toitū Kaupapa Māori Mātauranga.
-

Takune Rautaki 04:

Te Oke kia Mau Tonu te Kounga o te Reo Māori

Te whāinga angitu mō te whā tau:

Kia tairite ake, kia tuawhiti ake te reo Māori

Ehara ko te reo Māori anake te hanga e matapoporetia nei e mātou. He matahiapo anō ko ngā whakaaro Māori kua tāmāua ki te reo. Ko tētahi o ā mātou kawenga i raro i te ture, ko te tuku tiwhikete e whakamana ana i te matatau ki te whakamāori kōrero, ā-tuhi, ā-waha. Hei tautoko i tēnei mahi, whakatū ai mātou i ngā whakangungutanga mā te hunga whakauru ki ngā whakamātautau whakamāori. He rēhita tuihono anō e tauwhirotia ana e mātou, kei reira e mau ana ngā ingoa o te hunga kua puta ngā ihu i ngā whakamātautau, kua mana te tū hei kaiwhakamāori ā-tuhi, ā-waha rānei. He whakamātautau anō e tukua ana e mātou mā te hunga hiahia mōhio e pēhea rawa ana tō rātou matatau ki te reo Māori. E rima ngā taumata matatau o roto i tērā whakamātautau.



Ngā tohu angitu

Ka pai ake te tautoko i te rere o te reo Māori i te ao hurihuri e noho nei tātou.

Ka kaha ake te whakamanahia o te matatau ki te reo, tae atu ki te pakari ake me te rere o te reo Māori.

He koninga whaka-te-ao-mārama (mai i te Kore ki te Pō, mai i te Pō ki te Awatea).

He matakaraapa atu ki ngā kokenga

- + E tupu tonu ana te minamina o te tangata ki te whakauru ki Te Toi Reo Māori. Mai i te 2019, e 85 ngā kaiwhakamāori hou kua tāpiria ki te rēhita, nō reira kua pahika ake i te pikinga e 20% i ia tau i tūmanakohia.
 - + Waihoki, mai i te 2019, kua rearuatia te tokomaha e kawe ana i te Whakamātautau Tohu Taumata (LFE). Hui katoa, e 655 ngā tāngata kua whakamātau i tō rātou matatau ā mohoa noa nei.
 - + I te wā e ngau ana ngā here a Korona, riro ana nā te ao tuihono kē i kawe ngā mahi whakatairanga me ngā whakamātautau o te LFE. Engari kua āhei anō ināianei te whakatū ā-tinana i ngā hanga nei. E whakatairanga tonutia ana e mātou ngā whakamātautau nei ki Te Matatini me ā mātou hui whakamahere reo.
-

He Tūāoma Whakahirahira i te Ara o te Reo Māori



A Tākuta Tom Roa e kōrero ana i waho o te Whare Pāremata, ko Moana Maniapoto rāua ko Tākuta Robert Pouwhare e noho ana i tōna taha.

Nō te 1 o Hereturikōkā 2022 i tūria ai he hākari mā ngā kaimahi hei whakanui i te whakamanatanga o te Ture o te Reo Māori i te 1987 me te huatakinga o ngā kori nui ki te whakaora ake i te reo Māori i raro i te maru o Te Taura Whiri i te Reo Māori.



He tino tau te 2022 i ngā tāhuhu kōrero o te whakarauoratanga o te reo Māori. He tau hoki i whakapau kaha ai Te Taura Whiri i te Reo Māori ki ngā whakariterite me ngā mahi tūao mō ngā kaupapa whakanui i te huringa o ngā tau e 50 mai i te hainatanga o te Petihana Reo Māori, i tāpaea ai ki te Whare Pāremata i te 14 o Mahuru 1972.

Nā Te Taura Whiri i te Reo Māori i tātaki te kaupapa nei i mahi tahi ai ngā pūtahi tekau ki te whakahaere i te whakakitenga i Te Puna Mātauranga o Aotearoa me te hui whakamānawa i tū ki te pikinga atu ki te Pāremata.

He mea whakaatu ki Tōku Reo, Tōku Ohoho ētahi whārangi o te petihana, me ētahi whakaahua o ētahi tino tāngata o roto i ngā whawhai mō te reo Māori i ngā tau whitu tekau o tērā rautau. I riro taurewa mai hoki ētahi tāraitanga i te whakakitenga toi a Tame Iti, ko *I will not speak Māori* te ingoa, e tū rā ki te tahatai o Te Whanga-nui-a-Tara. He mea whakatuwhera te whakakitenga e te mana whenua i te atapō tonu, i tae atu ai te 200 tāngata hemihemi.

Nō muri i tērā kaupapa a Te Puna Mātauranga, ka tū tētahi whakamānawa tūmatanui i te marae ātea o te Pāremata. Ka tae atu ngā Kōhanga Reo me ngā



Ētahi toa mō te reo i te whakatuwheratanga atapō o te whakakitenga Tōku Reo, Tōku Ohooho, i Te Puna Mātauranga o Aotearoa.

Kura Kaupapa Māori o te rohe ki te manaaki i te reo rāhiri. Ko Moana Maniapoto te reo tātaki o te rā, ā, i reira a tama toanga rau o te ao puoro, a Rob Ruha ki te kīnaki i ngā kōrero ki te waiata. I matapaetia ka 1000 pea te hunga e tae ake, engari e ai ki ētahi tataunga, i eke kē ki te 4000.

Ko Te Wā Tuku Reo Māori i tū i te 12.00 o ngā hāora, ā, nā Whakaata Māori i pāho ki te motu. I tonoa te whakaminenga kia waiata ngātahi i *Ngā Iwi E*, he mea tito nā Hirini Melbourne. E ai ki ngā whakatau tata, ko tōna 2.6 miriona pea ia nei te hunga i whai wāhi mai ki Te Wā Tuku Reo Māori nei.

I pāhotia mataorahia ētahi huānga o Ngā Tamatoa i te huranga o tētahi whakaahua matarahi o Hana Te Hemara (1940–1999) i Ngāmotu, i Taranaki. He mea peita te whakaahua nei e te ringatoi nei, e Mr G. Ko Hana tētahi o ngā mema nāna te rōpū nei i whakatū, he wahine i ngākau whiwhita ki te whakahauora ake i te reo Māori.

Ngā Kākā Kura o te Reo 2022

I te Paraire, te 9 o Hakihea 2022, ka whakamihia e Te Taura Whiri i te Reo Māori ētahi kaupapa reo Māori whakarae o roto i ngā tau – me ngā tāngata nāna aua kaupapa i hautū – i tētahi hui whakamānawa i tū ki Tāmaki-makau-rau. I taea ai, he tautoko mai nā ngā hoa pātui o te rāngai tūmatanui i ngā karangatanga tohutoa.

Mō ngā takoha nui ki	Te hunga i whakamānawatia	Te kaitautoko
Ngā mahi rēhia a te Māori	Te Matatini Society Inc.	Toi Aotearoa
	Ngā Tamatoa	
Ngā tūtohetohē reo Māori	Te Rangatōpū mō te Reo Māori	Whakaata Māori
	Ngāi Tauira	
Ngā rangahautanga reo Māori	Te Wāhanga, Rangahau Mātauranga o Aotearoa	Te Manatū Taonga
	Te Wānanga o Raukawa	
Te reo Māori i te paetoru o te ao mātauranga	Te Wānanga o Awanuiārangi	Te Tāhuhu o te Mātauranga
	Te Wānanga o Aotearoa	
Te ako o te reo Māori i ngā hapori	Te Ataarangi	Te Mātāwai
Te whakamanatanga ā-ture o te reo Māori	Ngā Kaiwhakapūmau i te Reo Māori	Te Taura Whiri i te Reo Māori
	Te Kaunihera Māori o Aotearoa	
Te reo Māori i te pouaka whakaata	Ngā Hōtaka Māori – TVNZ	Te Matatini
	Whakaata Māori	
Te reo Māori i te reo irirangi	Te Whakaruruhau o Ngā Reo Irirangi Māori	Te Māngai Pāho
	Te Reo Irirangi o Te Ūpoko o Te Ika	
Te reo Māori i ngā kura kōhungahunga	Te Kōhanga Reo National Trust	Te Puni Kōkiri
	Pukeatua Kōhanga Reo	
Te reo Māori i ngā tau kura me mātua tae atu te katoa	Te Rūnanga Nui o Ngā Kura Kaupapa Māori o Aotearoa	Te Mātāwai me Te Taura Whiri i te Reo Māori
	Te Kura Kaupapa Māori o Hoani Waititi	
He Whakamānawatanga Motuhake	Esther Jessop (QSM) – Ngāti Rānana	Te Mātāwai me Te Taura Whiri i te Reo Māori

NGĀ
KĀKĀ
KURA
O TE REO
2022



TE TAURA WHIRI
I TE REO MĀORI

MĀORI LANGUAGE COMMISSION



Statement of
Performance
Expectations

2022-
2023

He Ara Whāia,
He Ara Hou
Te Tauākī Koronga
mō ngā Mahi kia Tutuki

He Kupu mō Te Tauākī Koronga mō ngā Mahi kia Tutuki

Ko tā mātou Tauākī Koronga mō ngā Mahi kia Tutuki (SPE) e tūtohu ana i ngā whāinga, i ngā inenga me ngā mahi e tika ana kia tutuki i te tau pūtea 2022–23. Ko te tuatoru tēnei o ngā tau e oke ana mātou ki te whakatutuki haere o ngā keonga i poua i tā mātou Tauākī Whakamaunga Atu 2020–24.

Ko te tairite tētahi mea kua mātua whāia i tā mātou aro ki ngā keonga o te 2022–23, koia i ū tonu ai ki te nuinga o ngā inenga o te tau o mua atu. Nā konei hoki i kitea ai mehemea he ia i roto i te whakatutuki haeretanga o ngā whāinga, i pēhea rawa hoki te kaha eke o ngā tutukinga.



Kua whiriwhiria e mātou tā mātou ine i te pānga o ā mātou mahi, hei tauira, ko ‘Te piki o te ōrau o ngā kaiwhakautu e whakaae ana he wāhi nui kei te reo Māori i te ahurea o Aotearoa’ (2.6). E hāngai ana tēnei inenga ki te wawata o Te Maihi Karauna me te Whāinga Rongomaioro 1: ‘i mua i te tau 2040, kia 85 ōrau (kia nui atu rānei) ngā tāngata o Aotearoa e kaingākau ana ki te reo Māori hei wāhanga matua o te tuakiritanga ā-motu’.

Ka haere tonu tā mātou whakarite inenga whaitake hei whakaari i ngā kokenga i Aotearoa i te ara e māori noa ai te reo Māori, i a mātou ka whakapai ake i te inenga o ngā pānga o ā mātou mahi.

Ko te haepapa mō te whakatutukinga o ēnei putanga, e pīkauria ana e ngā whakahaere maha, ā, ka uru ki roto ko ō mātou hononga ki ō mātou hoa pātui i te rāngai tūmatanui. Ka peke mai hoki ki tēnei haere kōtui ngā hoa pātui o Te Maihi Karauna e maimoatia nei e mātou:

- + Te Tari Taiwhenua
- + Te Manatū Taonga
- + Te Tāhuhu o te Mātauranga
- + Te Puni Kōkiri
- + Irirangi Te Motu
- + Te Arawhiti
- + Te Kawa Mataaho
- + Tātauranga Aotearoa

Kei roto anō i ngā pātuinga nei tā mātou mahi tahi ki te iwi Māori me ngā rōpū ā-iwi e whakakanohitia ana e Te Mātāwai, ki Te Māngai Pāho, ki a Whakaata Māori, me ngā kaiwhakarato i te mātauranga Māori.

SPE 01

Te Whakapakari i Te Maihi Karauna, hei Tautoko i Te Whare o te Reo Mauriora



Maui ki te matau: Ko Ngāpera Hoerara, ko Joe Williams, ko Ngāhiwi Apanui, i Uhi Tai

Te Whakamahere Reo

He mea nui te reo Māori i te ahurea me te tuakiri o te whenua nei. Ko tā mātou e kūwata nei, kia rere māori noa te reo Māori i ngā tini kawenga o ia rā i Aotearoa. Pāhekoheko ai te rāngai tūmatanui ki ngā tāngata katoa o Aotearoa, nō reira he kaiwhakaawe nui e oti ai ētahi panonitanga. I ā mātou mahi tahi ki te rāngai tūmatanui, e toritori ana mātou kia tū a Aotearoa hei whenua e kōrerotia ai te reo Māori i ia rā, ahakoa te mahi, ahakoa te wāhi, ahakoa ko wai, ahakoa ki a wai.

He whakarato tonu mātou i ngā pūtahi o te ratonga tūmatanui ki te rauemi me te kōrero ārahi mō ngā mahere reo, kia riro ai mā rātou tonu rātou e panoni, mā rātou anō e pou atu ā rātou kaupapa whakatairanga i te reo Māori i waenga i ā rātou kaimahi me ā rātou kiritaki.

I ia tau whakahaerehia ai ōna anō hui whakamahere reo. He taiao haumarua ēnei mō te ako, mō te uiui, he āhuru mōwai e pai ai te tupu. Ahakoa inea tō mātou angitu i runga i te āhua o te mahi tahi ki te rāngai tūmatanui, e wātea ana hoki ngā hui nei ki ngā kamupene tūmataiti. Ka whakakotahi mai tēnā me tēnā, ka whakarongo ai ki ngā pūkōrero whakahihiri, ka whakawhanaunga, tētahi ki tētahi.

Ko tētahi anō hua o ngā hui nei, kua pai tā mātou kite i te whanaketanga o ngā mahere reo a ngā pūtahi nei, me te whakatītina i a rātou ki te hāpai tonu i te reo. Kua pai anō te matapaki i ngā taputapu, te tohatoha rauemi, te whakautu pātai, me te whakahoki kōrero ki ō rātou whakaaro ki ngā mea hei mahi mā rātou. He pai ngā hui nei hei tuitui i te muka tangata, hei poi-poi i te auhatanga, hei whakahihiko i te hunga ka tae ake ki ngā mea tērā e whakaritea mā ō rātou hoamahi me ngā kiritaki. E waru ngā hui whakamahere reo i tū i te roanga o te tau 2022–23.

Date of workshop	Topic
20 Pipiri 2022	Te whakanui i a Matariki
24 Hōngongoi 2022	Te Whakamahere Reo – ngā takahanga tuatahi – Tākuta Ruakere Hond rāua ko Shane Taurima
30 Hereturikōkā 2022	Ngā Whakariterite mō Te Wiki o Te Reo Māori
19 Whiringa-ā-nuku 2022	Ko Te Manatū Aorere e kōrero ana i te wāhi ki a rātou
16 Huitanguru 2023	Ko Te Arawhiti e kōrero ana mō te mātāpuna haumanu
22 Poutūterangi 2023	Te whakamahere reo – he kupu ārahi nā Ahorangi Rawinia Higgins rāua ko Charisma Rangipunga
27 Paengawhāwhā 2023	He whakawhiti whakaaro mō Te Wiki o Te Reo Māori
10 Haratua 2023	Te Reo Māori i te Ao Puoro – Kahurangi Hinewehi Mohi rātou ko Keelan Ransfield, ko Toni Huata
29 Pipiri 2023	Ngā waitohu o te taiao i te maramataka Māori - ko Rereata Makiha te kaikōrero

Hui katoa, e 63 ngā whakahaere, e 486 ngā tāngata i tae ki ngā hui.



Uhi Tai – Te whakarauikatanga reo a Te Maihi Karauna

I tēnei tau ka tū anō hoki tā mātou whakarauikatanga reo tuatahi, a Uhi Tai, ki Te Papa Tongarewa, i Te Whanganui-a-Tara. Ko te tikanga o te 'Uhi Tai', he tai ka pari tonu, ka pari tonu, ā, he mea tiki atu hoki e mātou ko te 'Kauawhitia te Panonitanga' hei peha tautoko.

Ko te arotahinga o Uhi Tai, ko ngā kaiwhakahaere matua me te hunga taki panonitanga huri noa i te rāngai tūmatanui. E anga nui ana ki ngā whakahaere kāore i kaha tā rātou hāpai i ngā mahi whakamahere reo ā mohoa noa. I reira ka kauhau te matahuhua o ngā mātanga me ngā pūkōrero whakarauora reo e whakakanohi ana i ngā kaupapa whai pānga mai i te rāngai tūmataiti, tūmatanui anō. Ka kōrero mai rātou mō ngā panonitanga me ngā whanaketanga kua wheako rā rātou, me te tuku i ō rātou awhero mō te ora o te reo Māori, o Aotearoa anō hoki hei ngā rā ki tua.

I whakaritea kia tū te hui nei ki tō mātou nei whare, e ō mai ai te 80 tāngata, engari ka hau atu te hunga hiahia haere mai i tērā, koia i nekehia ai ki wāhi kē, me te aha, ka rēhita mai te hia rau tāngata e minamina kē ana, e manaaki kē ana i te reo. Kāore hoki i ārikarika te hunga hiahia tuihono mai ki te hui, kia rongō ai rātou i ngā kōrero a ngā kaikauhau matua. E mea ana mātou kia tū anō te hui nei ā tōna wā e tika ana.



He aha i kīia ai he mea nui tēnei

E aro ana te huanga nei ki te whakapūioio ake i tā te Karauna whakaora ake i te reo Māori, i tāna tautoko hoki i Te Whare o te Reo Mauriora. Kei runga i Te Taura Whiri te haepapa mō te whakatinanatanga o Te Maihi Karauna, ā, nō te Haratua o te 2023 i oti ai, i whakaputaina ai te Arotakenga Arataki o Te Whare o te Reo Mauriora 2021–22 me tō Te Maihi Karauna 2021–22.

Kua huri kē te aronga o ngā taumatua reo ki tua o ngā pūtahi ratonga tūmatanui e 35, ki ētahi atu pūtahi āhua 200 nei o te rāngai kāwanatanga, me te manaaki anō i ērā whakahaere o te rāngai tūmataiti e ngākaunui ana ki te reo Māori. Arā hoki Te Pae Mahere, tā mātou taputapu whakamahere reo i te ipurangi, ko tāna he tautāwhi i ngā pūtahi ki te whakatakoto mahere reo, he whakatenatena hoki i te tukutuku whakaaro, tētahi ki tētahi.

E āhukahuka ana tēnei whāinga o te SPE ki te awe nui o ngā mahi kāwanatanga ki te rere me te ako o te reo. Nō konā te arunga kia uru mai te whānuitanga atu o te rāngai kāwanatanga (kei reira tōna nei 13 ōrau o te rāngaimahi o Aotearoa) ki ngā mahi whakakaha ake i te reo Māori.



Ko te whakatauranga toharite a te hunga i whai wāhi mai mō te pai o te hui, ko te

4.7

o roto i te 5

115

i tae ā-tinana

469

i tuihono mai

Neke atu i te

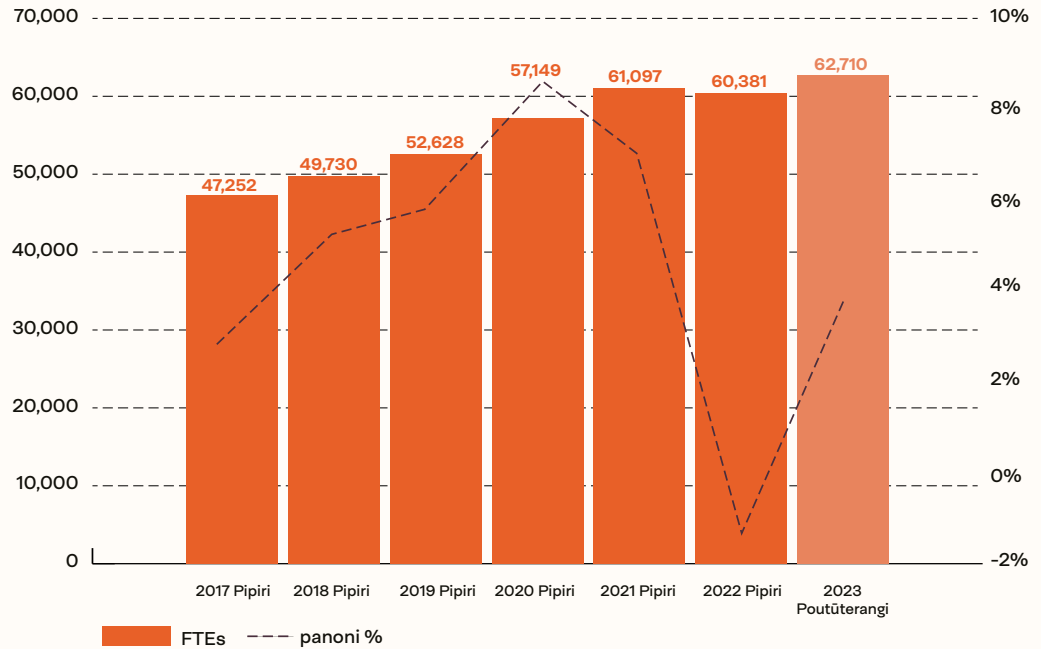
140

ngā whakahaere i whakakanohitia ki te hui

Ngā FTE i te Rāngaimahi

I te 31 o Poutūterangi 2023, e 62,710 ngā FTE i ngā tari ratonga tūmatanui me ngā pūtahi ā-tari – ko tōna 2330 FTE te pikinga i roto i te iwa marama (e 3.9%).

TE RAHI O TE RATONGA TŪMATANUI



Ko tā mātou i kī ai ka tutuki i a mātou i te 2022–23

Ko tā mātou i kī taurangi ai:

- + ka tukua e mātou he taputapu, he tohutohu hoki ki ngā whakahaere hei āwhina i a rātou ki te whakatakoto, ki te whakatinana hoki i ngā mahere reo, ki te whakaemi, ki te pūrongo hoki i ngā pāpātanga (tae atu ki ngā koninga whaka-te-ao-mārama)
- + ka tautāwhitia ngā whakahaere o ngā rāngai tūmatanui, tūmataiti ki te whakatakoto, ki te whakatinana mahere reo
- + ka aroturuki, ka tautoko i ngā whakahaere o ngā rāngai tūmatanui, tūmataiti kua takoto kē i a rātou he mahere reo mā rātou
- + ka mahi tahi ki ngā whakahaere tātaki o Te Maihi Karauna e poipoi ana i te rere o te reo Māori hei hanga māori noa
- + ka whakatairangahia ngā hua o te whakamahere reo.

Ko te keonga mātāmua o tēnei whāinga rautaki tōmua, ko te rāngai tūmatanui.

Te Tauākī Koronga mō ngā Mahi kia Tutuki– Wāhanga O1

E tūhono ana ki te huanga Maihi Karauna – Te Whakapakari i Te Maihi Karauna hei tautoko i Te Whare o Te Reo Mauri Ora

SPE	Inenga	Keonga	Tūturu	Tihoinga	Hononga ki te anga putanga
1.1 [†]	Te maha o ngā pūtahi rāngai kāwanatanga ka āwhinatia ki te tārai mahere reo	20	63	43	Ka kaha ake te kitea me te kōrerotia o te reo Māori i te ratonga tūmatanui
1.2	Te maha o ngā pūtahi rāngai kāwanatanga (āhua 200 nei) ka tae ā-tinana mai, ka mātaki rānei i ngā papamahi whakamahere reo	30	71 ¹	41	Ka kaha ake te kitea me te kōrerotia o te reo Māori i te ratonga tūmatanui
1.3	Te maha ake o ngā kaupapa whakamahere reo ā-pūtahi ka takina ngātahitia	4	4	Karekau	Ka kaha ake te kitea me te kōrerotia o te reo Māori i te ratonga tūmatanui
1.4	Te ōrau o ngā pūtahi e pūrongo mai ana he āwhina tonu ngā taputapu me ngā tohutohu a Te Taura Whiri i te Reo Māori i tā rātou mahere reo	65%	100%	35%	Ka kaha ake te kitea me te kōrerotia o te reo Māori i te ratonga tūmatanui
1.5	Te ōrau o ngā pūtahi e kite ana, e pūrongo ana hoki i te koninga whaka-te-ao-mārama (mai i te Kore ki te Pō, mai i te Pō ki te Awatea), nā runga i ā rātou mahi whakarauora reo Māori	75%	92% ²	17%	Ka kaha ake te kitea me te kōrerotia o te reo Māori i te ratonga tūmatanui

[†] Mai i ngā Whakatau Tata o ngā Tāpuinga Moni: Roherohenga Pūtea Whanaketanga Māori 2022-23

¹ Kua tāpiria i konei te maha o ngā pūtahi i tae ki ngā papamahi me ērā (hāunga ngā mea i tae ki ngā papamahi) i tae ā-tinana ki te whakaraukatanga o Uhi Tai. Whakamārama: Kāore anō i whakaritea kia tū a Uhi Tai i te wā i poua ai tēnei keonga. Ka tū a Uhi Tai i ia rua tau.

² Huia katoatia, e 32 o ngā pūtahi ratonga tūmatanui mātāmua e 35 i pūrongo mai i ngā koninga whaka-te-ao-mārama i ā rātou kawenga me ā rātou kaupapa reo.

Ngā Ia o Mua

SPE #	2020-21 tūturu	2021-22 tūturu
1.1	23	20
1.2	24	30
1.3	3	4
1.4	100%	93%
1.5	Kāore i inea	94%

SPE 02

Te Whakapiki i te Tokomaha o ngā Aotearoa e Maimoa ana i te Reo Māori, kia Ākona ai, kia Kōrerotia ai, kia Tū ai hei Wāhanga Nui o Tō Tātou Tuakiri ā-Motu

Ngā Taiopenga me Ngā Whakatairanga

I runga i te whāinga kia māori, kia haumarū, kia hauora anō te reo Māori, kua whakakotahi mai te iwi Māori me tauīwi huri i te motu, ā, kua tautoro hoki te reo me te ringa atawhai ki tāwāhi. Kua kite haere te umaraha o Aotearoa i te reo e poiipoia ana i ngā whaitua maha, kua mārama ake hoki te hiranga o ngā hononga ki te tautoko, ki te whakatairanga i te reo, inā hoki te noho tāpua mai o te reo Māori ki ētahi kaupapa tiketike – ko ētahi he tino tuatahitanga.

I kawea ōna anō whakamānawatanga nui mō te huritau 50 o te Petihana Reo Māori, i mahi tahi ai Te Taura Whiri i te Reo Māori ki ētahi atu pūtahi o te rāngai tūmatanui ki te whakarite i te hui nei, He Toa Reo Māori – 50 Years On, he hui i tū ki ngā upane i te tomokanga ki te Whare Pāremata, i pāhōngia mataoratia ki te motu. He whakanui tā He Toa Reo Māori i te manawa tītī o ngā mumu me ngā kiritōhe o te reo Māori, o mua, o nāianeī anō hoki. Karahuihui ana te mano tini ki te marae ātea o te Pāremata, ki reira waiata ngātahi ai mō Te Wā Tuku Reo – he whakanui e hāngai ana ki ngā whakahau tūroa kia kaha tātou ki te tiaki i te reo Māori.

Heoi anō, ehara i te mea nā Te Taura Whiri i te Reo Māori ngā kaupapa katoa mō te reo, ā, mā te whiri i te muka tangata e takoto mai ai ētahi atu ara hei tautoko i te whakatāiritanga o te reo Māori.

I pā te reo whakatītina mō ngā reo taketake o te ao ki te Huinga Nui o te Kotahitanga o ngā Whenua o te Ao i tū ki Te Āporo Nui i tērā tau. Ko te akiaki a te Toihau, a Ahorangi Rawinia Higgins ki ngā kāwanatanga o te ao, kia whāia te taura o Aotearoa, kia āta tiakina ō rātou reo taketake mā roto mai i te ture.

He mea āta hoatu tētahi pūtātara e ngā iwi o Te Moana-nui-a-Kiwa hei whakanui i te whakaterenga, ā, i tapaina hoki ki 'Te Reo o Te Moana-Nui-A-Kiwa'. Ka noho te pūtātara hei waitohu o te whakawhitihiti kōrero i Te Moana-nui-a-Kiwa, hei tohu anō i te tīmatanga o tētahi kaupapa nui.



©UNESCO/ Fabrice Gentile

I tautokona atu e Te Taura Whiri i te Reo Māori rāua ko Whakaata Māori ngā moutere a Kiwa i te whakaterenga o te Ngahurutanga Tau o te UN mō ngā Reo Taketake o te Ao. I whakakotahi mai ki te kōrerorero i ngā wero o te āhuarangi hurihuri me te tūngurutanga o ngā reo i Te Moana-nui-a-Kiwa. Taka mai ki tēnei wā, 1309 ngā kaupapa mō ngā reo 151, i ngā whenua e 55, kua rēhitatia ki te Ngahurutanga Tau o te UN mō ngā Reo Taketake o te Ao, ā, ko Te Matatini te kaupapa nāna i huaki te nguhurutanga tau nei ki roto o Te Moana-nui-a-Kiwa.

Ka whakaaturia Te Reo o te Moana-nui-a-Kiwa ki te Kotahitanga o ngā Whenua o te Ao.

I runga i te taura kua whiria i mua ki ngā tāngata o Wēra, ka tae mai tētahi rōpū taiohi tūao ā-motu o reira, ko Urdd Gobaith Cymru te ingoa, ki Aotearoa, me ngā rangatahi Urdd 14 i kōwhiria mō tētahi kapa whutupōro kei raro i te 18 tau te pakeke i whai wāhi ki te Whakataetae Takiwhitu ā-Kura o te Ao. I a rātou i konei, i runga anō i te tautoko a Te Taura Whiri i te Reo Māori, ka ako ngā kōtiro nei i ētahi āhuratanga o ngā tāhuhu kōrero o te reo Māori me tōna mana ā-ture i Aotearoa, ā, i tauawhi i ētahi tikanga Māori i te taha o ngā rōpū ā-iwi me ngā rōpū rangatahi nāna rātou i manaaki i a rātou i konei.

Ko ētahi o ā rātou nekeneke, ko te haere ki Maungawhau ki te ako i ngā kōrero o reira, me te hiranga taha ahurea o te whenua. I toro anō rātou i a Whakaata Māori, ā, i noho tahi anō hoki ki Te Kaha o Te Rangatahi (he rōpū rangatahi Māori). I konā ka whakawhiti wheako o ō rātou reo taketake, me te aha, tupu tonu ake te whanaungatanga me te māramatanga i waenga i a rātou.



Ētahi kaitākaro whutupōro o Urdd Gobaith Cymru, he kapa nō Wēra, me ētahi o Te Kaha o Te Rangatahi, i Tāmaki Makaurau.

He whakakaha kē atu tā tēnei tauwhitiwhiti ahurua i te hono i waenga i ngā whenua e rua. He whakatauirā hoki i te whakakotahi a ngā tāngata o ahurea kē i runga i ngā wero āhua rite kua pā ki ō rāua reo, ki te tauawhiawhi, tētahi i tētahi. Waihoki, he huarahi i kōrerorero tahi ai te rangatahi mō te reo, i pakari ake ai hoki tō rātou mārama ki ngā āhuatanga o te whakaora reo, rā roto mai i ngā wheako o te katoa.

I noho tahi ōna anō toki o te ao hākinakina ki ngā toki o te reo Māori i tētahi kēmu T20 i tākaro ai ngā Pōtae Pango ki Hiri Rānaka i te 2 o Paengawhāwhā 2023. Ko Maia Lewis rātou ko Peter McGlashan, ko Rebecca Rolls ērā i piri ki ngā reopāho, ki a Scotty Morrison rāua ko Te Aorere Pewhairangi, mō te pāhotanga tuatahitanga o tētahi kēmu kirikiti o te ao ki te reo Pākehā me te reo Māori. Hei whakatauirā tēnei mahi ngātahi i te tū a ngā kairauhi o te reo ki te whakatenatena tūmatanui i te kōrerotanga o te reo, ki te poipoi i te kotahitanga me te poho kererū i waenga i ngā hapori. Kua kaha te mahi tahi a Scotty rāua ko Stacey Morrison ki a mātou i tēnei tau, inā hoki, ko rāua anō ngā reo tātaki i Ngā Kākā Kura o te Reo, ā, nā Stacey i taki te pae matapaki i Featherston Booktown Karukatea, i te taha o Ngahiwi Apanui rāua ko Tamati Rimene-Sproat.

I tae atu mātou ki te whakaterenga o Te Wiki o te Reo Turi i whakahaerehia e ō mātou tino hoa i Tāngata Turi. Kua aua atu ngā tau e tū whiwhita ana a Tāngata Turi ki te tautoko i ā mātou kaupapa whakatairanga i te reo Māori. Ko tētahi o ā rātou mahi o nā tata nei, ko te whakamāori i tā mātou kaikōhau ki te Reo Rotarota o Aotearoa. E rikirika ana mātou kia mau tonu tēnei haere pātui i a mātou ka whakamōrunga i te reo Māori rāua ko te reo rotarota – ngā reo whaimana ā-ture e rua o Aotearoa. Nō tēnei tau hoki i whakaputaina ai e Tāngata Turi ētahi rauemi reo rotarota, tae atu ki ētahi rota mō ngā ariā Māori, ko *25 Signs to Learn for Māori Concepts* te ingoa.



He aha i kiia ai he mea nui tēnei

Ko tā Te Maihi Karauna e whai nei, kia 2040 te tau, kua 85 ōrau o Aotearoa nui tonu e maimoa ana i te reo Māori hei tūtanga o te tuakiri ā-motu tē unuhia. Ko ngā waiaro o te porihanga kei te urungi i te hauora o te reo, nō reira, e tutuki ai ngā mahi whakaora i te reo, me whakaae anō te porihanga he taonga te reo. I Te Wā Tuku Reo, i hipa anō i te kotahi miriona ngā tāngata i whai wāhi mai. Koia tēnei, ko te kaupapa reo Māori nui whakaharahara, mai, mai anō. E ai ki tā mātou uiuinga o Te Wiki o te Reo Māori, e 73 ōrau o ngāi Aotearoa e whakaaro ana he mea hirahira te reo Māori i roto i te tuakiri ā-motu. E tautoko ana mātou i ngā kaupapa ka whakatairanga i te reo Māori, ka akiaki anō hoki kia kitea, kia rangona te reo. Āhuareka ana tērā te kite i te tupu o te whakaaro pai ki te reo Māori. Koia rā te hua o ngā haumāuiui o ngā whakatupuranga maha kia tū anō te reo Māori hei hanga Māori noa, otirā hei hanga e matapoporetia ana e ngāi Aotearoa.

Ko Scotty rāua ko Stacey Morrison e whakangahau ana i te iwi i Ngā Kākā Kura 2022.

Ko tā mātou i kī ai ka tutuki i a mātou i te 2022–23

Ko tā mātou i kī taurangi ai:

- + ka tautoko mātou i ētahi kaupapa nunui (ā-motu, ā-rohe), tae atu ki Te Wiki o te Reo Māori me Ngā Tohu Reo Māori, hei whakaikeike tonu i te mana o te reo Māori, hei whakatītina hoki i Aotearoa whānui kia tautoko mai i tōna whakaoranga ake
- + ka akiaki, ka tautoko, ka whakatairanga i ngā kohakoha a te rāngai tūmataiti ki te whakahauora i te reo, mātua rā ētahi e kaha ana te tautoro, te tiwha me te awe
- + ka whakatū i ētahi kaupapa whakamānawa i ngā tūāoma whakahirahira i te ara whakaora reo i whakanuia i te tau 2022
- + ka whakatupu i tā mātou tautoro i te ao tuihono, i te mōhiotia o ō mātou waitohu, me tā mātou pāhekoheko ki tā mātou apataki tuihono
- + ka tuku i ētahi kaupapa whakatairanga ki te ao tuihono e arotahi ana ki te rangatahi.

Ko te keonga mātāmua o tēnei whāinga rautaki tōmua, ko te iwi tūmatanui (te umaraha o Aotearoa).

Te Tauākī Koronga mō ngā Mahi kia Tutuki – Wāhanga O2

E tūhono ana ki te huanga Maihi Karauna – Te Whakapiki i te tokomaha o ngā Aotearoa e maimoa ana i te reo Māori, kia ākona ai, kia kōrerotia ai, kia tū ai hei wāhanga nui o tō tātou tuakiri ā-motu

SPE	Inenga	Keonga	Tūturu	Tihoinga	Hononga ki te anga putanga
2.1 [†]	Te tokomaha ake o te hunga ka whiwhi i ā mātou imēra	110,000 te hunga whiwhi i ā mātou imēra	91,936	(18,064)	Ka kaha ake a ngāi Aotearoa ki te kōrero Māori
2.2 [†]	Te tokomaha ake o te hunga aru i ngā kōrero pāhopori	150,000 te hunga aru i ngā kōrero pāhopori	174,000	24,000	Ka kaha ake a ngāi Aotearoa ki te kōrero Māori
2.3	Te maha ake o ngā tīaritanga o ngā whakairinga puta noa i ngā pae pāhopori	Inenga hou i te 2022-23: 16.3 miriona	20 miriona ¹	3.7 miriona	Ka kaha ake a ngāi Aotearoa ki te kōrero Māori
2.4	Te piki o te ōrau o tā mātou apataki e kai ana i ā mātou kōrero puta noa i ngā pae pāhopori	6%	6%	Karekau	Ka kaha ake a ngāi Aotearoa ki te kōrero Māori
2.5	Te maha o ngā kaupapa i tautokona – i te aka tuihono/ā-tinana	40	40	Karekau	Ka kaha ake a ngāi Aotearoa ki te kōrero Māori
2.6	Te piki o te ōrau o ngā kaiwhakautu e whakaae ana he hanga hirahira te reo Māori i te ahurea o Aotearoa	Inenga hou i te 2022-23: 84%	73% ²	(11%)	Ka kaha ake a ngāi Aotearoa ki te kōrero Māori
2.7	Te ōrau o ngā whakahaere kua tautokona i pūrongo mai i te koninga whaka-te-ao-mārama	70%	82% ³	12%	Ka kaha ake a ngāi Aotearoa ki te kōrero Māori

[†] Mai i ngā Whakatau Tata o ngā Tāpuinga Moni: Roherohenga Pūtea Whanaketanga Māori 2022-23

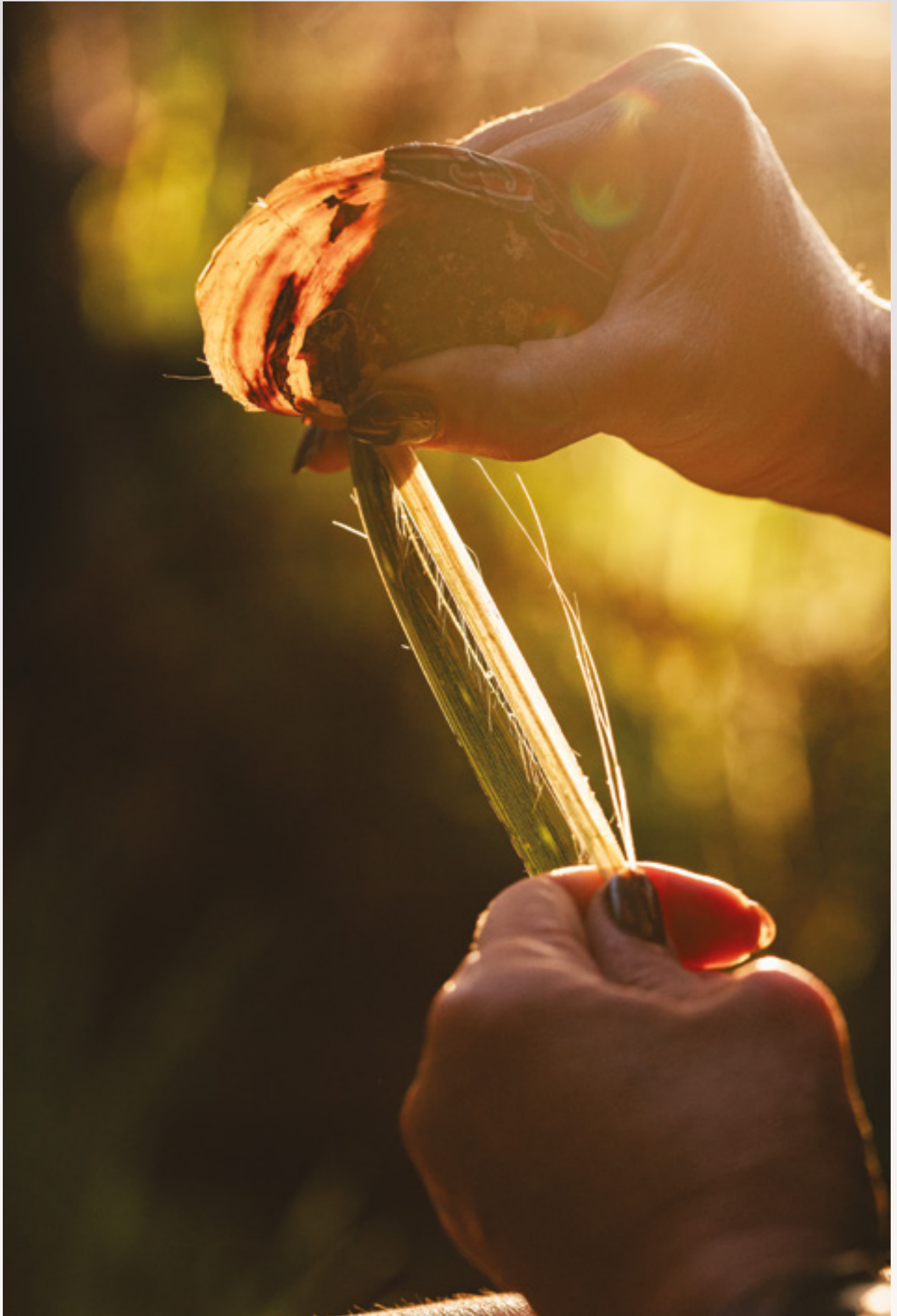
¹ Kei roto i tēnei ngā tīaritanga pāhopori katoa puta noa i ā mātou pae pāhopori e iwa.

² E hāngai ana ēnei raraunga ki te taupori nui tonu, i runga i tā Kantar Public i tūtohi mai ai. I ngā tau o mua, e pā ana ēnei raraunga ki ērā anake e mōhio ana ki te hanga nei, ki Te Wiki o te Reo Māori. Nā te rerekē o te āhua o te hunga i uru mai ki te inenga, e mea ana a Kantar Public hei aha te whakatairite i ngā raraunga o te tau 2022-23 ki ō mua atu.

³ Nā runga i ngā pūrongo e 28 i tae mai (e tohu ana i te koninga whaka-te-ao-mārama) mai i ngā kaupapa e 34 i tautokona.

Ngā Ia o Mua

SPE #	2020-21 tūturu	2021-22 tūturu
2.1	-	Inenga hou: 140,664
2.2	-	Inenga hou: 143,500
2.3	-	-
2.4	-	-
2.5	25	48
2.6	-	-
2.7	Kāore i inea	80%



SPE 03

Te Waihanga me te Whakatairanga Rauemi Tautoko i te Whakamahere, te Ako, me te Whakamahi i te Reo Māori

Ngā Rangahau me ngā arotake

E titikaha ana Te Taura Whiri i te Reo Māori ki te ara whakaora i te reo Māori. Waihoki, he kawenga e pīkautia ana e ia, e tōna kotahi tonu, i raro i Te Ture o Te Reo Māori 2016. Heoi anō, kei te noho haepapa anō mātou mō ētahi mahi i Te Maihi Karauna, ā, me mātua whai wāhi mātou ki ngā whāinga tōmua taha rangahau o Te Whare o te Reo Mauriora, i te taha tonu o Te Maihi Māori (e whakakanohitia ana e Te Mātāwai).

I ngā tau pūtea e rua ka taha – mai i te 2021–22 ki te 2022–23 – he maha ngā pūrongo kua puta i tō mātou kāhui rangahau, arotake. Koia nei ētahi:

+ He arotutuki, he arotake i Te Maihi Karauna

- Te pūrongo ā-tau 2020–21
- Te pūrongo ā-tau 2021–22
- Te arotakenga arataki i te Maihi Karauna
- Te mahere arotakenga whakakapi mō te Maihi Karauna

+ He arotake i ngā hōtaka e tū ana i tēnei wā

- Te arotake i ngā Whakamātautau Tohu Taumata
- Te arotake i Te Toi Reo Māori
- Te horanga o te reo Māori ki te arotakenga whakatauiria i te rāngai tūmatanui
- Te arotake whakatauiria i ngā kura reo ki te rāngai tūmatanui

+ Ngā rangahau ka kawea ngātahitia mō Te Whare o te Reo Mauriora

- Te Whare o te Reo Mauriora – He Arotakenga Arataki 2021–22
- Te Whare o te Reo Mauriora – He Mahere Arotakenga Whakakapi
- He Ara Poutama mō te reo Māori: Te reo Māori workforce development
- He Ara Poutama mō te reo Māori: Monitoring the Maihi Karauna goals
- He Ara Poutama mō te reo Māori: Kaitiaki for ongoing use of the model
- Te Rangakura – he pūtere toha ngātahi i te raraunga

I Hei āpiti ki ēnei, kua kawea ētahi rangahau e anga whāiti ana ki ā mātou mahi poka pū. Ko ētahi, ko te whanaketanga me te tītaringa o ngā kupu hou, ko ngā tauira o tāwāhi mō te whakahauora reo taketake, me ngā tikanga pai mō roto i te whakamāori kōrero; arā te takune, kia tupu te mātauranga mō te whakaora reo taketake me te ine i ngā mahi whakaora.

Ka whakahaere rangahau tonu mātou e haere ai ngā mahi whakamahere me ngā tukanga whakatau take i runga i te mōhio, taiāwhio noa i te ratonga tūmatanui. E miramira ana ēnei tutukinga i tō mātou aumangea ki te tautāwhi i ngā mahi whakaora i te reo Māori, ā, kia whaihua hoki tā mātou whai wāhi ki te hāpori whakaora reo o te ao.

Te Tohu Whakamānawa a Matihiko ki te Rāngai Tūmatanui

Ka whakahaerehia e Te Hāpori Matihiko te tuatahi o ngā Whakawhiwhinga Tohu Matihiko, ki te Whare Tapere o Te Rauparaha, i te Hōngongoi 2023, ki te whakamihī, ki te whakanui i ngā kaupapa Māori kua eke ki te kairangi i te ao o Matihiko rāua ko Hangarau.

Ko te Tohu ki te Rāngai Tūmatanui, i tautokona rā e Hikina Whakatutuki, he mea whakawhiwhi mai ki a mātou ko Te Mātāwai (ō mātou hoa pātui o Te Whare o te Reo Mauriora), ko Te Tāhuhu o te Mātauranga, ko Nicholson Consultants, ko Kōtātā Insight. I tukua ki a mātou te tohu Tipu o roto i tēnei karangatanga, mō He Ara Poutama mō te reo Māori.

He tauira whakataruna moroiti a He Ara Poutama mō te reo Māori o te matatau ki te reo Māori me te rere o te reo Māori i Aotearoa. I hoahoina hei āwhina i ngā mahi whakamahere, whakangao, whakatau take anō hoki e pā ana ki te whakaoranga ake o te reo Māori.

Ko tēnei tohu whakamihī, e whakaatu ana i te hiranga, i te pitomata anō o ngā pātuinga.



Mai i te mauī ki te matau:
John Cribb (Toitū Kaupapa Māori
Mātauranga), me ētahi ākonga kei
tua o paetahi, a Deacon Fisher,
a Kahurangi Tipene,
a Rere-Nō-a-Rangi Pope,
tae atu ki a Ngahiwi Apanui.

Mai i te mauī ki te matau: a Braden Te Hivī (Te Taura Whiri i te Reo Māori), a Ernestynne Walsh (Nicholson Consulting Ltd), a Cyril Mako (Te Tāhuhu o te Mātauranga), me Mikaia Leach (Te Mātāwai).



Te Taituarā

Ko Te Taituarā tēnā ki te taupua i ngā hui a Te Papa Kōrero me Te Tokomatua. I tēnei wā, tekau ngā pūtahi e whai wāhi ana ki ngā hui nei. Tupu ana te whanaungatanga i waenga i ngā pūtahi nei i te āta noho tahi, me te kite anō i ngā hua o ngā kaupapa kua kōkiritia e te kāhui nei, pērā i He Ara Poutama, i te poipoinga o te rāngaimahi kōrero i te reo Māori, me te kaupapa whakanui i te Petihana.

Mā tēnei huihuinga o ngā tumuaki me ngā kaiwhakahaere matua, ka taea tētahi tirohanga whānui ake ki te reo Māori i te rāngai tūmatanui, ka noho anō te mahi ngātahi hei hanga noa, ahakoa te iti, te rahi o ngā pūtahi, ahakoa anō ā rātou mahi.

Ko tētahi kaupapa pātui a Te Taituarā, ko Te Rito – he hōtaka tuku karahipi i timatahia i te 2022 me te 2023. Nā Toitū Kaupapa Māori Mātauranga i tiaki te tahua, ā, nā Te Taura Whiri i te Reo Māori i whakatakoto ngā paearu tīpako.

E āhei ai te hunga whai i te mātauranga paetoru ki te tono, me kuhu he akoranga reo Māori ki tā rātou pūtoi akoranga. I tohaina ngā karahipi ki ōna anō wehenga (hei tauira, ki ngā ākongā ko te tau tuatahi tēnei mō rātou, ki ngā ākongā paetahi, me ngā ākongā kei tua o paetahi), kia pau katoa ai ngā moni i tohua, ko te nuinga i whakahāngaitia ki te wehenga paetahi i te mea i reira te nuinga o ngā kaitono. Tērā anō tētahi pūtea i taunahatia hei āwhina i ngā ākongā i raru i ngā kino o te Tūpuhi o Gabrielle.

E \$20,000 te wāriu o ngā karahipi nui katoa, ā, i tukua ēnei ki ētahi ākongā kei tua o paetahi e mahi ana. I tae atu te tokotoru nei ki tētahi hui iti i Te Taura Whiri i te Reo Māori, kia pai ai tā rātou kōrero mō ā rātou akoranga, kia āta tukuna anō hoki ngā karahipi ki ō rātou ringaringa tonu.

He aha i kīia ai he mea nui tēnei

Ko tā Te Maihi Karauna, he whakamahi i te hao nui o te kupenga rāngai tūmatanui ki te whakatutuki i ngā mahi mō te reo Māori, ki te tūhono atu hoki ki a ngāi huhua noa o Aotearoa. Ko te tūmanako, hei te tau 2040, kua kotahi miriona ngā tāngata he mōhio ki te kōrero Māori; me he mauinga teitei te awhero nei, engari he awhero e tū pakari anō ai te reo ki ō tātou hapori katoa.

Kei te mōhio hoki mātou, e kōrero Māori ai te tangata, me māia tōna ngākau ki te kōrero, ā, ko tētahi mea e pērā ai, ko te mōhio e tautokona paitia ana ia. Ko tā Te Taura Whiri i te Reo Māori, he whakakaha i te tangata ki te tuku i te reo Māori, ki te kōrero i te reo Māori, ki ō rātou hoa, ki ō rātou whānau, i ō rātou wāhi mahi. He tuku pūtea āwhina hoki mātou mō ngā kēmu reo Māori, mō ngā rauemi reo Māori pērā i te pukapuka, i te papakupu, ka waihanga pukaiti hoki mātou, he pārekareka, he māmā te whakamahi, e mau mai ana ki roto ētahi kīanga me ētahi kupu e nui ana te hiahia. Haere ngātahi ai ētahi o ēnei ki ngā kaupapa me ngā kawenga i te takanga o te tau, pērā i te haere ki tātahi, i te whakanui i a Matariki, me te haere ki Te Matatini.

Ko tētahi wāhanga anō o ā mātou mahi whakapūoio, whakawhanake i te reo Māori, ko te tono rangahautanga, ko te arotake hoki i ngā kaupapa i te rāngai tūmatanui, pērā i ētahi hōtaka whakatauirā mō te hora akoranga reo Māori ki ngā ākonga hou. I tēnei tau, kua arotakea ētahi hōtaka whakatauirā e rua, ā, kua tāpaea he taunakitanga mō te whakapai ake i aua kaupapa.

Ko tā mātou i kī ai ka tutuki i a mātou i te 2022–23

Ko tā mātou i kī taurangi ai:

- + ka whakatūria he pae matihiko, he pae ICT anō mō te waihanga me te tukutuku i ngā taputapu me ngā rauemi whakamahere reo, mō te whakatauirā i ngā momo ako huhua i te reo, me te whakamahi i ngā rauemi kua puta kē ki te ao
- + ka hangaia he rauemi hou i runga i te mahi tahi ki ētahi atu whakahaere, tae atu ki Te Mātāwai, hei whakangata i ngā mea e matea nuitia ana, e hapa ana rānei
- + ka tautokona te tahua reo Māori, me te oke kia oti mai he kupu hou, he kīanga, he paerewa hou e tika ana te kounga, e wātea ana hoki hei taupua i te kōrerotanga o te reo Māori
- + ka tuku pūrongo i ia tau mō te āhua me te whārahi o ngā takoha ki te Maihi Karauna e whakaritea ana e ngā pūtahi/whakahaere e noho haepapa ana
- + ka tono kia kawea he rangahautanga e arotahi ana ki te whakatauirā raraunga me te ako i runga anō i ngā tikanga papai.

Ko ngā keonga mātāmua o tēnei whāinga rautaki tōmua, ko te rāngai tūmataiti me ngā whakahaere i te hapori (ko rātou hoki ētahi o ngā tino ringaringa o te whakarauora reo) me te iwi tūmatanui (te umaraha o Aotearoa).

Te Tauākī Koronga mō ngā Mahi kia Tutuki – Wāhanga Section 03

E tūhono ana ki te huanga Maihi Karauna – Te waihanga me te whakatairanga rauemi tautoko i te whakamahere, te ako, me te whakamahi i te reo Māori

SPE	Inenga	Keonga	Tūturu	Tihoinga	Hononga ki te anga putanga
3.1	Te maha ake o ngā kupu e wātea ana kia taea ai e te tangata te kōrero mō ngā āhuatanga whāiti me ngā kaupapa hou ki te reo Māori	240	240	Karekau	Ka pai ake te tairite me te kounga o te reo Māori
3.2	Te whakatairiterite i ngā kupu ehara i Te Taura Whiri i te Reo Māori	2	2	Karekau	Ka pai ake te tairite me te kounga o te reo Māori
3.3 [†]	Te maha o ngā rangahautanga me ngā arotakenga ka tonoa kia kawea	4	6	2	Ka pai ake te whakamahere me te tautoko i te ako me te rere o te reo Māori
3.4	Te ōrau o ngā kaiwhakamahi ka kite, ka pūrongo hoki i ngā koninga whaka-te-ao-mārama (Mai i te Kore ki te Pō, mai i te Pō ki te Awatea) i runga i ā rātou mahi whakamahere, ako, whakamahi rānei i te reo Māori	75%	80% ¹	5%	Ka kaha ake a ngāi Aotearoa ki te kōrero Māori

[†] Mai i ngā Whakatau Tata o ngā Tāpuinga Moni: Roherohenga Pūtea Whanaketanga Māori 2022-23

¹ Ngā hua o te tātari i ngā koninga whaka-te-ao-mārama o te whakatauiratanga i te Provision of te reo Māori to the Public Sector. Nō te 19 o Mahuru 2022 i tū ai te wānanga whakamutunga.

Ngā la o Mua

SPE #	2020-21 tūturu	2021-22 tūturu
3.1	200	220
3.2	2	2
3.3	2	4
3.4	Kāore i inea	94%



SPE 04

Te Oke kia Mau Tonu te Kounga o te Reo Māori



Te whakawhanake kupu

Ko te waihanga kupu tētahi mahi ngahau mahia ai i konei. Mā te hanga kupu e oreore tonu ai te reo Māori, e hāngai tonu ai ki te ao e noho nei tātou, e ea ai ngā hiahia taha whakapuaki, taha ahurea o ana kaikōrero.

He wāhanga tēnei nō ā mātou mahi tautini ki te tauwhiro i te puna kupu Māori. He kawenga nui – me māia te hunga hanga kupu. Inā hoki, ko te tohu kua angitu tā rātou mahi, ko te pīrangitia o ā rātou whakatau me te hāpainga ake o ā rātou kupu e ngā ngutu o te hunga kōrero Māori. He mahi matarau, me kimi haere, me tiroiro haere ngā kupu kua takoto kē, me matapaki tahi ki ngā mātanga marau, me rangahau, me mārāma pai anō ki te āhua o te reo Māori.

Kei te pōhēhē pea ētahi he mahi māmā noa te hanga puku, engari arā kē te wero, ko te āta tārai i tētahi kupu Māori hou e whakaata pū ana i te kupu Pākehā, me te mau tonu o tētahi wairua Māori. Ka mutu, ehara ko mātou anake kei te waihanga kupu Māori. Ko mātou tēnei i te taha o ētahi atu e hanga kupu ana i tētahi tūhononga mātauranga, ko te whāinga a te katoa, kia āwhinatia te rere o te reo Māori i ngā tini nekeneke o ia rā.

Kia panoni te ao, me whakawhānui anō te punakupu Māori, kia māmā tonu ai tā te tangata whakapuaki i ōna whakaaro, i ōna mātauranga, i ōna wheako, kāore he aukati, taha kupu. Mā te hahu kupu hoki e ora mai anō ai ētahi kupu tūturu kua roa e moe ana. Ā, mā konei pea e tahuri ai te hunga kōrero ki te toro i ngā mātauranga kei roto anō i te reo e huna ana, me te komo haere ki ngā kawenga o ia rā, hei tautoko i te rere me te whāngaitanga o te reo i ō rātou ake whānau, i ō rātou ake hapori.

He mahi tuatini te hanga kupu, engari he mahi e kaha ana te pīrangitia. E mahi tahi ana Te Taura Whiri i te Reo Māori ki te hapori whānui, tae atu ki ēnei tū rōpū, ki ēnei tū tāngata:

- + ngā whakahaere e tonono kia hangaia he kupu mō ā rātou ahumahi
- + ngā mātanga wetereo
- + te hunga kōrero Māori mai i te whānautanga
- + ngā mātanga reo (pērā i ngā kaiwhakamāori)
- + ngā rōpū kura wānanga
- + te hunga whakaputa papakupu reo Māori.

Ko mātou katoa kei te whai wāhi ki te hanganga o te kupu hou e hāngai ana, e whaitake ana, me te whakamomori kia pūmau tonu te ngako tūturu o te reo.

I tēnei tau, e 240 ngā kupu hou i waihangatia i ngā whaitua e ono: te ao hangarau, te ao hanganga, te ao hangarau aronuku, te ao nakawhiti, te ao ture, me te ao tiakarete. Ehara nā mātou te katoa o aua kupu e 240 i hanga, ā, ko ētahi – mātua rā ērā o ngā whaitua whāiti – kāore anō kia whakaurua ki tētahi papakupu Māori whānui.

Ko ētahi kupu, i hangaia i runga i te tiki atu i kupu kē atu e mōhio nuitia ana. Hei tauira, i tīkina atu te ‘rorohiko’ hei waihanga i te ‘hinengaro rorohiko’ mō te artificial intelligence, ā, ko te ‘koko’ i naomia atu mō te ‘papatipu koko’ (cocoa mass) me te ‘mārōtanga koko’ (cocoa solids). I whakamahia hoki ētahi kupu whakawhiti mai i te reo Pākehā ki te reo Māori, pērā i te ‘miraka’ (milk) mō te ‘paura miraka’.

Arā te rārangi tūtahi, kei te <https://www.reomaori.co.nz/kupu-hou>

Anei ētahi o ngā kupu hou nei:

	Te reo Māori	Te reo Pākehā
Te ao hangarau	ako a te rorohiko	machine learning
	ao whakakaurahi	augmented reality
	aunoa	automation
	hinengaro rorohiko	artificial intelligence; AI
	ī-ako	e-learning
	karetao hiko	robotics
	karetaokōrero	chatbot
Te ao hanganga	arumoni	commercial
	kaimahi ā-rehe	tradie
	kāinga tuaiti	tiny home
	kāinga hangarau	smart home
	haumarutanga ahi	fire safety
	tūraru	risk

He aha i kīia ai he mea nui tēnei

He mea nui whakahirahira kia mau tonu te tuawhiti o te reo Māori, i waenga i te hunga kōrero, ako anō hoki i te reo Māori, i roto anō i ngā tini kōrerorero noa i ia rā.

Ko te reo Māori tonu tērā kua tū hei pā tūwatawata mō te whakaaro Māori, koia i pūmau ai hei taonga tuku iho i tēnā whakatupuranga ki tēnā. He neke noa atu i te whakapuakanga kupu noa iho, waihoki, kīhai i rokohanga e ngā whakapātari, kīhai i wahangūtia. Koia nei te take me mātua whakapūmau te iho i waenga i te reo Māori me te ahurea ko ia tōna pūtakenga mai.

Ki te mōriroriro te kōrerorero noa i te reo Māori i te wairua Māori, ka kore te reo e whakaatu tika, e whakatōitū i ngā tino uara Māori, i ngā tino tirohanga Māori.

Ko tā mātou arotahinga rautaki, ko te whakamārohirohi ake i te ako me te whakamahinga o te reo Māori, mā roto i te whakamana i ngā kaiwhakamāori, mā roto hoki i te whakawhanake i tētahi tahua reo Māori raurarahi.

Ko tā mātou i kī ai ka tutuki i a mātou i te 2022–23

Ka kori tonu mātou:

- + ki te arotake, ki te whakahou i te hanga o Te Toi Reo Māori
- + ki te raihana, ki te rēhita, ki te whakangungu hoki i ngā kaiwhakamāori ā-tuhi, ā-waha, ki te whakamāmā hoki i te ara kimi kaiwhakamāori whai raihana
- + ki te whakatairanga, ki te whakahaere hoki i te Whakamātautau Tohu Taumata
- + ki te whakawhiti ki te tuku tuihono i ngā hōtaka i timatahia rā i te uruparenga ki te Mate Korona.

Ko ngā keonga mātāmua o tēnei whāinga rautaki tōmua, ko te hunga matatau ki te reo me ngā tāngata/whakahaere e kimi ana i ngā taumatua mō ētahi āhuatanga whāiti o te whakarauora reo.



Te Tauākī Koronga mō ngā Mahi kia Tutuki – Wāhanga O4

E tūhono ana ki te huanga Maihi Karauna – Te oke kia mau tonu te kounga o te reo Māori

SPE	Inenga	Keonga	Tūturu	Tihoinga	Hononga ki te anga putanga
4.1 [†]	Te piki o te ōrau o te hunga ka whai wāhi ki ngā whakangungutanga o Te Toi Reo Māori (kaiwhakamāori ā-tuhi, ā-waha) ¹	>25%	47%	22%	Ka pai ake te tairite me te kounga o te reo Māori
4.2	Te tokomaha o te hunga whai wāhi mai ka puta ngā ihu i Te Toi Reo Māori ²	Inenga hou i te 2022-23: 50	57	7	Ka pai ake te tairite me te kounga o te reo Māori
4.3	Te maha o ngā kaupapa Maihi Karauna ka tonoa, ka tīmataria, ka oti rānei.	Inenga hou i te 2022-23: 4	4	Karekau	Ka pai ake te whakamahere me te tautoko i te ako me te rere o te reo Māori
4.4 [†]	Te piki o te tokomaha e kawea ana i te Whakamatautau Tohu Taumata (LFE)	180	244	64	Ka kaha ake te kitea me te kōrerotia o te reo Māori i te ratonga tūmatanui
4.5	Te tokomaha o te hunga whai wāhi ki Te Toi Reo Māori ka taea te ine tā rātou koni whaka-te-ao-mārama	75%	100% ³	25%	Ka pai ake te tairite me te kounga o te reo Māori

[†] Mai i ngā Whakatau Tata o ngā Tāpuinga Moni: Roherohenga Pūtea Whanaketanga Māori 2022–23

¹ Ka eke tēnei pikinga ōrau mā te whakapiki i te tokomaha e uru ana ki Te Toi Reo Māori, i te 93 i te 2021–22 ki te 116 i te 2022–23. Hui katoa, 137 ngā tāngata i rēhita ki Te Toi Reo Māori.

² Te tokomaha o ngā kaitono ka tutuki i a rātou ngā aromatawai katoa o Te Toi Reo Māori, tae atu ki te whakamātautau whakamutunga.

³ E 49 o ngā kaitono e 57 i whakautu i te uiuinga, ā, 100 o ērā i tautohu i te koninga whaka-te-ao-mārama.

Ngā la o Mua

SPE #	2020–21 tūturu	2021–22 tūturu
4.1	-8%	41%
4.2	-	-
4.3	-	-
4.4	136	155
4.5	Kāore i inea	83%

SPE 05

Te Hauora ā-Whare me te Kaha

‘He rau ringa e oti ai te mahi.’

Te Taiao e Mahi Nei Mātou

I runga i te whai kia noho mai ngā tāngata tika mō te tahuri ki te whakamahere ā-kaupapa i ā mātou whāinga ā-tau, ka arotakea ngā mea e mātua hiahiatia ana i konei, me te tautohu anō i ētahi tūranga hou kia whakakīia. Kua arotahia ko te whakapakari ake i ngā tautoko me ngā pūkenga tara ā-whare, inā hoki, mā reira e tupu ai te raukaha whakaroto, mā reira hoki e iti ake ai te whakawhirinaki ki ngā kaikirimana o waho.

Māringanui kua kitea e Te Taura Whiri i te Reo Māori ngā tāngata kōrero Māori he pūkenga anō o rātou e manako nuitia ana, ahakoa te kaha tauwhāingatia, te kaha arumia o ēnei tū tāngata i tēnei wā. Me te aha, kua piki ngā kaimahi o konei i te 40 ki te 56. Ariari ana te kitea o tā mātou anga nui ki te whakapakari i ngā kaimahi o konei i tā mātou whakatau kia whakapikia ētahi kaimahi tokorima ki ētahi tūranga e whakatatarangia ai rātou, otirā e rongō anō ai rātou i ngā painga.

Arā ētahi kaupapa whakāngungu auroa e kawea ana, mō ēnei āhuatanga e rima nei:

- + he whakaakoranga kia eke ngā mahi a ngā kaiwhakahaere me ngā kaimahi ki te taumata
- + he whakangungutanga pare tāngata tutū
- + te tuhi i te reo Ingarihi kia māmā, kia mārama
- + ngā hanga me ngā tukanga kāwanatanga
- + The Wall Walk
- + te noho takatū ina tau mai te ohotata.

Ko tā ēnei papamahi, he whakapakari i ngā pūkenga o ā mātou kaimahi, he whakahōhonu ci tō rātou mārama ki ā rātou mahi i Te Taura Whiri i te Reo Māori, me te wāhi ki tēnei whakahaere i te whānuitanga atu o te ratonga tūmatanui.

Kei te noho mātāmua tonu mai i roto i ngā mahi ko ngā whakapāpātanga whakaroto. Nō konā i auau ai te tū o ngā hui a ngā kaimahi katoa me ngā wānanga whakamahere rautaki. Mā konei e mārama ake ai mātou ki te wāhi ki a mātou i ngā mahi whakaora, e taea ai hoki e mātou te whakatakoto koronga mō ngā mahi kia tutuki hei arotahi mā mātou ā ngā rā e heke mai nei.

I tā mātou nekehanga ki tō mātou whare hou, kua hanga māori noa te raungāwari i tō mātou tokomatua; kua takoto mai he wāhi hou e mahi ai,

e hui ai mātou, otirā ētahi atu whakahaere o te rāngai tūmatanui; kua whānui ake te hao a te kupenga kimi kaimahi, e taea atu ai ētahi tūngaio tautōhito, ahakoa kei Pōneke, kei hea kē ake rānei e noho ana.

Kua whakapaua tonutia he moni ki ngā whakangungutanga reo Māori. I panonitia ngā hāora ako kia pai ai ki te kaiako, hei whakaatu hoki i tō mātou niwha ki te whakatupu i te raukaha reo Māori o te whare nei.

E kaha ana te aronui ki te noho ora o ngā kaimahi. I te Wiki Aronui ki te Hauora Hinengaro, ka hoahoaina e mātou he hōtaka hāpai i te whaiora, i tū ai he Pū-Āio Māori, he whakaāio wairua, he kai tahi, me ētahi matapakinga i ōna anō kaupapa hauora, tae atu ki te hauora torowhārahi. I kaha paingia te Pū-Āio, me te aha, whakatauria ana e ngā kaimahi mā rātou anō e utu kia haere tonu tēnei mahi mō tētahi ono wiki atu anō.

Kua poua hoki ētahi atu āhuatanga hou hei toko i te ora o ngā kaimahi, tae atu ki tētahi utu matangaronga mātua, ētahi kōwhiringa mō te tāoki i te māuiuitanga, i te wharanga rānei, me tētahi pūtea iti hei whakaea i ngā utu o ētahi hanga hāpai hauora pērā i te whakauru ki te whare korikori, i te tiki taputapu whakakori, i te toro rānei i ngā rata.

Kānapanapa ana tērā te wairua o tō mātou tokomatua. I tērā tau ka tautokona e Te Taura Whiri i te Reo Māori tētahi rōpū i whakauru ki te Taupō Great Lake Relay. I oti i a rātou te oma 100-kiromita te roa i te 14 hāora, te 42 meneti me te 6 hēkena. Pāorooro ana hoki tā mātou umere ki te tautoko i tō mātou kapa poitarawhiti i tā rātou tauwhāinga whakapohopā ki ō mātou hoa o Te Mātāwai. Rere ana te hiamō, ā, i te mutunga iho, riro ana te papa me te poho kererū i a mātou.

Mauī ki te matau: Eva Scott-Keen, Sharon Rapana, Ruth Katene, Roimata Tauroa, Rueben Hill, Danika Maru, Natalia Apirana.



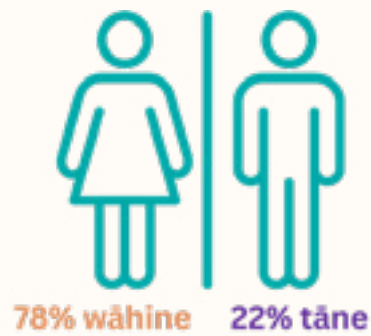
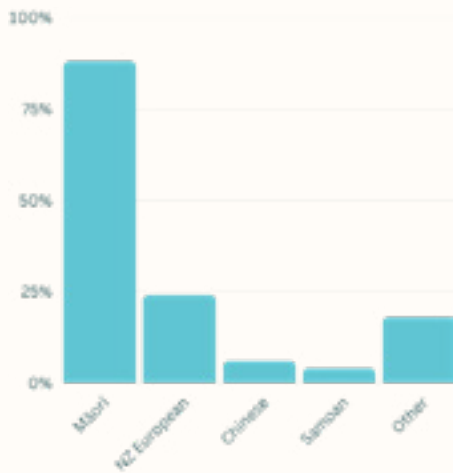
I whakatauirahia tētahi anga mō ngā tutukinga, he mea tārai i runga i te titiro Māori. Heoi anō, kitea ana i te uiuinga kāore i te tino eke ki te taumata, nō reira ka mahi tō mātou kāhui HR ki te PSA me ngā kaiārahi o ērā atu kāhui ki te tārai anō. I whai patanga anō tā mātou mahi tahi ki te PSA. Ko tētahi o ngā hua, ko Kia Toipoto, he pūrongo i ruku i te rire o te āputa utu mō te wāhi ki te ira me te mātāwaka, me te tātai mahere mahi hei whakatikatika.

I tēnei wā, e 56 ngā kaimahi, ko te nuinga he tūranga pūmau o rātou. Ko te tapeke o te moni kua whakangaōa ki te whakapakari kaimahi, ko te \$154,579.31. – e tohu ana i tō mātou titikaha ki te poipoi i te tupu o te tangata i konei. E ono ōrau noa te rahi o ngā kaimahi i tiriwātia i te tau nei, ā, e 39.83 te pakeke toharite o ngā kaimahi – e tohu ana ēnei i te tūmau me te whatutoto o tō mātou tokomatua. E kitea ana i ngā uiuinga kei te ngākaunui, kei te toritori ngā kaimahi ki ā rātou mahi – e 73 ōrau koirā tā rātou i tohu mai ai.

I piri tahi anō mātou i tēnei tau i runga i te wairua taumaha, i te hinganga o ō mātou hoamahi tokorua: ko Missy Winiata tētahi, he hoa tata nō te tokomaha i te whare nei, i tata hoki te 20 tau ōna e mahi ana ki Te Taura Whiri i te Reo Māori; ko Mattie Gregory ano tētahi, he tangata kakama, he aumangea, ka kite noa koe i tana menemene, kua hiki te wairua. Whakakotahi ana mātou ki te awahi i ngā whānau pani, ki te awahi anō i a mātou, tētahi i tētahi – ko te tohu rā o te kaha me te aroha i te noho toipoto ka ngau ana te auhi me te pōuri nui ki te rōpū. Kai kinikini ai te aroha me te mokemoke ki a rāua tahi.

Rā roto i ngā kori auroa kia tū mātou hei rangatira pai, kia whaihua ngā whakapāpātanga, kia mātāmua mai te noho ora, kia horahia hoki he whakangungutanga whārahi, e hangaia ana e Te Taura Whiri i te Reo Māori tētahi whare tū kaha, he tautoko kaha tētahi i tētahi, kei te kaha anō te hāpainga ake o ngā mahi.





He aha i kīia ai he mea nui tēnei

E toritori tonu ana Te Taura Whiri i te Reo Māori kia takoto he taiao mahi e haumaru ana, e tauawhi ana i ngā kaimahi katoa. Ka tū tonu te whaiora hei kaupapa tōmua i muri i te ngau o urutā ki te whenua; ka noho pokapū tonu ko te tangata ki ngā whakaaro ina tau mai he mate ohotata ki tētahi, ki te katoa rānei o mātou. Ko te nuinga o ngā kaimahi, ka mahi ki tō mātou tari i Pōneke, engari arā anō hoki te kōwhiringa kia mahi mai i wāhi kē ki te mātua whakaaetia e ngā pou whakahaere.

I tēnei wā, e rua ngā aronga matua: ko te kokenga o te Hōtaka Panonitanga Matihiko me te whanaketanga o te Rautaki Toitūtanga. E tutuki ai ēnei, me tahuri ki ētahi tikanga mahi hou e poipoia ai te whakamoamoā i roto i ā mātou whakahaere katoa. Hei wāhanga o ēnei mahi, kei te whakatinanahia tētahi rautaki hangarua whārarahi mō te tari, kia whakarērea atu ai ngā tukanga kai i te pepa.

Te Āhua o Tā Mātou Arotake i ngā Mahi kua Tutuki i a Mātou

Te Tauākī Koronga mō ngā Mahi kia Tutuki – Wāhanga 05

E tūhono ana ki te huanga Maihi Karauna – Te hauora ā-whare me te kaha

SPE	Inenga	Keonga	Tūturu	Tihoinga
5.1	Te urukaha o ngā kaimahi ki te kaupapa me ngā mahi	E ai ki ngā hua o te Uiuinga mō te Urukaha o ngā Kaimahi, kei runga ake i te 60% (> 60%) te urukaha	73%	13%
5.2	Te eke o ngā whakaritenga whakaōrite whiwhinga mahi	Me kōkuhu ki ngā tuinga me ngā tikanga katoa e hāngai ana	Āe	Karekau
5.3	Te pūmau o te pai o ngā whakatau kaiarotake, kia pai ake rānei	Kia pai ake i te 'pai' te whakatau (mō ngā pārongo e pā ana ki ngā tutukinga, tae atu ki ngā pūnaha me ngā whakatina e hāngai ana) Kia 'tino pai' tonu te whakatau (mō te taiao whakatina whakahaere, tae atu ki ngā pūnaha me ngā whakatina ahumoni)	I tutuki	Karekau
5.4	Te hōtaka panonitanga matihiko	40% (inenga hou i te 2022-23)	55%	15%

Ngā Ia o Mua

SPE #	2020-21 tūturu	2021-22 tūturu
5.1	83%	83%
5.2	I tutuki	I tutuki
5.3	I tutuki	I tutuki
5.4	-	-



Ngā Maumaharatanga



Kiriana Kuini Kimiora WINIATA (Missy)

Kī poha ana te whare i te mahana me te kata i te noho mai o Kiriana Winiata – ko ‘Missy’ ki a mātou – ki roto. He wahine i ngākaunui ki te reo Māori, i ringa tōhaunui ki te kaupapa a Te Taura Whiri i te Reo Māori.

Ka roa a Missy e mahi ana ki tēnei whare. Ko tana tāuteute o nā tata nei, ko ngā mahi whakatairanga i ngā kaupapa nui. I whakatenatena ia kia whai wāhi te reo Māori ki ngā kaupapa ā-motu, hei whakapiki i te mana me te noho puiaki o te reo Māori ki a Aotearoa nui tonu.

Ahakoia puta ia ki wāhi kē mahi ai i roto i ngā tau, tae atu ki te Tari o Kahurangi Tariana Turia, ka kawea e tōna aroha nui ki te reo Māori kia hoki mai ki Te Taura Whiri, me te mau mai i tana kete mātauranga kua kī anō i te wheako hou, i te pūkenga hou.

Ka tapaina ia e mātou ko te ‘kuīni o te manaakitanga’, he reka nō āna kai i taka ai, he nihowera anō nōna. Āpiti atu ki tērā ko tana wairua ngahau me ōna mātauranga tapuhi (he nēhi whaitohu hoki ia), koia i uaratia ai, i arohaina nuitia ai hei hoamahi, hei hoa tūturu tonu anō.

Ahakoia ōna raruraru taha hauora, kāore a Missy i maunu noa i ana kawenga, engari ia ka kaha tonu ki te mahi, ki te hāpai anō i te ora. I āna mahi i Te Taura Whiri ka rongō a Missy i te pārekareka o te whakapau kaha ki tētahi kaupapa whaitake, ā, ko tēnei mārohirohi me te aroha nui ki te tangata ngā āhuatanga ōna e kore e mawhe i ō mātou mahara.



Matthew Ngarua GREGORY (Mattie)

He tino hoa, te tino hoamahi anō a Mattie. He paku hīanga te mene o ngā pāpāringa, ā, kia kata, kua toro te kata ki te katoa. Haumūmū kau ana te tari i tōna ngaromanga, me te kai kino o te aroha i tērā āhua.

He tangata a Mattie i mōhio ki te whakakipakipa i a ia anō, he aro nui ki āna whāinga, i oke anō ki te whakapai ake i a ia ahakoia te kaupapa. He kukume noa tāna i te tangata kia piri, kia aro ki a ia, he tohunga ki te whiri i te muka whakawhanaunga, i torokaha ai ōna hononga i ngā paparanga katoa o tā mātou whakahaere.

He whakahirahira tonu ōna pūkenga whakataki, arataki hoki i te tangata. He kaha ia ki te āwhina i ētahi atu, ki te tuku i ōna tohungatanga hei painga mō ētahi atu. He neke atu a Mattie i te hoamahi noa – he kaipoipoi anō i te tokomaha. Nāna mātou i whakatītina kia whai i te iti kahurangi, tēnā i tōna, tēnā anō i tōna.

I waho o te mahi, he tangata tūmataiti a Mattie, engari he wairua ngangahau, me te horapa o tōna ngahau ki te katoa, i whiti ai te rā ki te rōpū ahakoia pēhea rawa te nui o te pōkēkē kua tāiri mai i runga. Nā tōna ngoi pai, nā te ngākau rorotu, hiki ana tērā te wairua o te katoa ka noho tahi ki a ia.

Ka kaingākau roatia ngā pūmahara o te noho tahi ki a Mattie i ngā kaupapa kawea ai e ngā kāhui, i ngā hui nui, otirā i ngā mahi noa o ia rā i te tari. He mokemoke nui te kai a tana kāhui mahi, a ōna hoamahi, a ōna hoa anō. Moe mai rā, Mattie. E kore koe e wareware i a mātou.

He kokonga whare e kitea,
he kokonga ngākau e kore e kitea,
moe mai rā kōrua i te moenga roa.



Te Mana Arataki

He mea arataki Te Taura Whiri i te Reo Māori e tōna anō Poari, arā, e ngā Kaiwhiri tokorima, he mea kopou e te Minita Whanaketanga Māori.

Koia ēnei ko ngā Kaiwhiri i te 30 o Pipiri 2023



Ahorangi Rawinia Higgins

Toihau
Ngāi Tūhoe



Charisma Rangipunga

Toihau Tuarua
Kāi Tahu, Ngāti Kahungunu,
Taranaki, Ngā Rauru



Wayne Panapa

Kaiwhiri
Ngāpuhi, Ngāti Whātua,
Waikato-Maniapoto



Dr Jeremy Tātere MacLeod

Kaiwhiri
Ngāti Kahungunu



Bayden Barber

Kaiwhiri
Ngāti Kahungunu, Ngāpuhi

Ngā Pārongo mō te Ū ki ngā Whakahau

Ngā Tohutohu Mai a te Minita

Kāore kau he tohutohu ōkawa mai a te Minita Whanaketanga Māori ki Te Taura Whiri i te Reo Māori i te tau 2022–23 (2021–22 karekau).

Ngā Takahanga i te Ture

Kāore e whakaaetia kia mahi Te Taura Whiri i te Reo Māori i tētahi mahi e takahi ana i tētahi ture whare pāremata, kei waho rānei i te mana o tētahi ture whare pāremata. Kāore Te Taura Whiri i te Reo Māori i mahi i tētahi mahi kei waho atu o tōna mana ā-ture (wāhanga 19 o te Ture Hinonga Karauna 2004).

Te Whakaae Kia Kawea Ake Tētahi Mahi

I raro i te Ture Hinonga Karauna 2004, me he mema e whai pānga ana ki tētahi take hinonga Karauna, kua taua mema e pōti, e whai wāhi rānei ki tētahi matapakinga, ki tētahi whakataunga rānei a te poari, a tētahi komiti rānei, e pā ana ki taua take. He oti anō, e taea ana e te Upoko o tētahi hinonga Karauna tēnei here te wewete mai i tētahi, i ētahi rānei o ngā mema o te poari, mehemea he painga ka puta ki te iwi tūmatanui i tana pērā (wāhanga 68(6) o te Ture Hinonga Karauna 2004).

Kāore he wewetenga o tēnei tū here i te 2022–23 (2021–22 karekau).



Te Tauāki Whakahaere

Rohenga Pūtea: Whanaketanga Māori me te Karangatanga Tutukinga

E takea mai ana te pūtea a Te Taura Whiri i te Reo Māori i te Rohenga Pūtea: Whanaketanga Māori, i raro i tēnei tāpuinga:

1. **Whakarauora Reo mō te Motu – te tautoko i te whakaoranga ake o te reo Māori ki te motu nui tonu, me te whakahaere i Te Taura Whiri i Te Reo Māori.**

Ko te takune, mā tēnei pūtea ka tutuki pai ngā mahi whakatairanga, rauhi, whakaora i te reo Māori, mā roto mai i:

- + te haere tautini o ngā mahi a Te Taura Whiri i te Reo Māori
- + te kawenga o tētahi hōtaka rangahau e tautoko ana i te whakaoranga ake o te reo Māori
- + Te Maihi Karauna (te rautaki reo Māori a te Karauna),
- + ērā atu mahi i raro i te ture kua āta tohua hei kawē mā Te Taura Whiri i te Reo Māori.

Arā hoki te takune ka āwhina te pūtea nei ki te whakaputa i ēnei hua kua tohua ki te Rohenga Pūtea: Whanaketanga Māori:¹

- + e rauhi ana, e whakatoitū ana, e whakatupu ana a ngāi Māori i ō rātou reo, i ā rātou taonga, i ō rātou mātauranga, me ā rātou tikanga
- + e whakatupu ana, e whāomoomo ana, e whakawhanake ana a ngāi Māori i ā rātou rawa
- + e mau haere ana i a ngāi Māori ōna anō pūkenga, mātauranga anō hoki.

E whakahau ana ngā Whakatau Tata mō te Tāpuinga Moni 2022-23 kia tuku pūrongo Te Taura Whiri mō ētahi inenga tutukinga e ono.

Ko ngā kōrero whakatairiterite ki Te Tauākī Koronga mō ngā Mahi kia Tutuki, kei ngā whārangi 26-59.

E whakaaturia ana i te tūtohi i raro nei te katoa o te pūtea i tae mai.

2022–23 Whiwhinga Tūturu, Whiwhinga i Tohua, i runga i te Takenga Mai

	2022–23 Tūturu \$	2022–23 I tohua \$	Tīhoinga \$
Tāpuinga: Whakarauora Reo Māori ā-Motu ²	11,664,000	11,664,000	-
Te katoa o ngā whiwhinga – mai i te Karauna	11,664,000	11,664,000	-
Ētahi atu whiwhinga	1,041,321	290,000	751,321
Te katoa o ngā whiwhinga	12,705,321	11,954,000	751,321

¹ Roherohenga Pūtea: Whanaketanga Māori, Ngā Whakatau Tata o ngā Tāpuinga Moni 2022–23 – Māori Affairs Sector, B.5, Putanga 7, whārangi 4.

² Ko ngā whiwhinga mai i te tāpuinga i tae mai ki Te Taura Whiri i te Reo Māori, he rite ki ngā whakapaunga tūturu a te Kāwanatanga ki te tāpuinga; he mea tēnei me mātua whāki i raro i te Ture Moni Tūmatanui.

Te Pūrongo a te Kaitātari Kaute Motuhake



KI TE HUNGA PĀNUI I NGĀ TAUĀKĪ PŪTEA ME NGĀ MŌHIOHIO WHAKATUTUKI A TE TAURA WHIRI I TE REO MĀORI MŌ TE TAU I MUTU AI I TE 30 O PIPIRI 2023

Ko Te Mana Arotake te kaitātari kaute o Te Taura Whiri i te Reo Māori (Te Taura Whiri).

Nā Te Mana Arotake ahau, a Talia Anderson-Town, i kopou ki te whakahaere mā te whakamahi i ngā kaimahi me ngā rawa a Silks Audit Chartered Accountants Ltd, i te tātari kaute o ngā tauākī pūtea me ngā mōhiohio whakatutuki a Te Taura Whiri mōna.

Whakaaro

Nā mātou i tātari:

- + ngā tauākī pūtea a Te Taura Whiri i ngā whārangi 66 ki te 81, kei roto ko te Pūrongo o te Tūnga Pūtea i te 30 o Pipiri 2023, te Tauākī o ngā Whiwhinga me ngā Whakapaunga Whānui, te Tauākī o ngā Panoni Tūtanga me te Tauākī Kapewhiti mō te mutunga o te tau i taua rā me ngā tuhipoka o ngā tauākī pūtea tae atu ki ngā kaupapahere mahi kaute me ētahi atu kōrero whakamārama; me
- + ngā mōhiohio whakatutuki a Te Taura Whiri i ngā whārangi 26 ki te 54, me te 61.

Ko tā mātou whakatau:

- + e whakaatu tika ana ngā tauākī pūtea a Te Taura Whiri i ngā whārangi 66 ki te 81:
 - i ngā āhuatanga kikokiko katoa:
 - › te āhua o te pūtea i te 30 o Pipiri, 2023; me
 - › āna mahi whakahaere pūtea me ngā kapewhiti mō te tau i mutu i taua rā; ā,
 - e ū ana ki ngā tikanga mahi kaute whānui i Aotearoa e ai ki te Kaupapa Whāki Ririo mō ngā Paerewa Hinonga Painga Tūmatanui; ā,

e whakaatu tika ana, i ngā āhuatanga kikokiko katoa, ngā mōhiohio whakatutuki i ngā whārangi 26 ki te 54 me te 61:

- + ngā whakatutukinga a Te Taura Whiri mō te tau i mutu i te 30 o Pipiri 2023, tae atu:
 - mō tēnā, mō tēnā kātū o ngā putanga me pūrongo:
 - › ana paerewa whakatutuki i oti rawa ki ērā i matapaetia, kei roto i te tauākī o ngā tūmanakohanga whakatutuki mō te tau pūtea; ā,
 - › ana whiwhinga tūturu me ōna whakapaunga putanga i oti rawa ki ērā i matapaetia, kei roto i te tauākī o ngā tūmanakohanga whakatutuki mō te tau pūtea; ā,

- › ko tērā i tutuki ai i te pūtea; ā,
- › ngā whakapaunga tūturu, ngā whakapaunga haupū rawa rānei i oti ki ngā whakapaunga, ngā whakapaunga haupū rawa rānei i tāpuitia, i matapaetia rānei.
- › Ka tautuku ki ngā ritenga tātari kaute ko te tikanga e whakaae whānuitia ana i Aotearoa.

I tutuki tā mātou tātari kaute i te 30 o Whiringa-ā-nuku, 2023. Koia nei hoki te rā i whakaputaina ai tēnei whakatau.

Kei raro nei ngā whakamārama mō te pūtakenga mai o te whakatau nei. Hei tāpiri atu, e rārangi ana ngā kawenga a te Poari me ā mātou kawenga e pā ana ki ngā tauākī pūtea me ngā mōhiohio whakatutuki, ka tuku kōrero mō ētahi atu mōhiohio, ā, ka whakamārama i tō mātou motuhaketanga.

Te pūtake o tā mātou whakatau

He mea whakahaere te arotakenga i runga anō i ngā Paerewa Arotake a Te Mana Arotake, kei roto nei e mau mai ana ngā Paerewa Ngaio me te Matatika me ngā Paerewa ā-Ao mō te Tātari Kaute (ki Aotearoa) i tukuna e Te Kāwai Ārahi Pūrongo Mōwaho. He whānui ake te whakamārama o ā mātou kawenga i raro i aua paerewa i te wāhanga Ngā Kawenga kei roto i te wāhanga kaitātari kaute o tā mātou pūrongo.

Kua tutuki i a mātou ā mātou kawenga i raro i Ngā Paerewa Arotake a Te Mana Arotake.

E whakapono ana mātou kua riro mai ngā taunakitanga arotake e rawaka ana, e tōtika ana hei tūāpapa mō tā mātou whakatau arotake.

Ngā kawenga a te Poari e pā ana ki ngā tauākī pūtea me ngā mōhiohio whakatutuki

Kei te Poari te kawenga mō Te Taura Whiri ki te whakarite, ki te whakaatu tika i ngā tauākī pūtea me ngā mōhiohio whakatutuki e ū ana ki ngā tikanga kaute e whakaaetia whānuitia ana i Aotearoa. Kei te Poari anō hoki te kawenga mō te whakarite i ngā mōhiohio whakatutuki mō Te Taura Whiri.

Kei te Poari te kawenga mō aua whakahaere o roto e āhei ai ia ki te whakarite tauākī pūtea me ngā mōhiohio whakatutuki kāore rawa he hapa whaikiko i roto, ahakoa takea mai i te mahi māminga, he hapa pokerehū rānei.

Ina whakaritea ana ngā pūrongo pūtea me ngā mōhiohio whakatutuki kei te Poari te kawenga ki te aromatawai mō Te Taura Whiri mēnā he rawaka ngā rawa a Te Taura Whiri kia haere tonu hei pakihī. Kei te Poari anō te kawenga mō te whāki, ina hāngai ana, i ngā take e pā ana ki te pakihī me te whakamahi tonu i ana mahi kaute pakihī, engari rawa ki te hiahia te Poari ki te whakakore, te whakamutu rānei i ngā whakahaere, kāore rānei he huarahi anō i tua atu i ēnei.

Ka ahu mai ngā kawenga a te Poari mai i te Crown Entities Act 2004 me te Public Finance Act 1989.

Ngā kawenga a te kaitātari kaute e pā ana ki te tātari kaute i ngā tauākī pūtea me ngā mōhiohio whakatutuki

Ko ā mātou whāinga he rapu i runga i te tūturutanga mēnā e wātea ana ngā tauākī pūtea me ngā mōhiohio whakatutuki i ngā kōrero hapa, ahakoa tinihanga, hē rānei, me te tuku i te pūrongo a te kaitātari kaute e takoto ai tā mātou whakatau.

Ko tēnei mea te whakatūturu whaitake he whakatūturu taumata teitei, engari ehara i te kī taurangi mā te whakahaere i te tātari e ai ki Ngā Paerewa Arotake a Te Mana Arotake ka kitea i ngā wā katoa he kōrero hapa mēnā kei reira tētahi. Ko te kōrero hapa, he rahinga, he whākinga rānei e rerekē ana, e ngaro ana rānei, ā, ka hua mai pea i te mahi māminga, i te hapa pokerehū rānei. E whakaarohia ana te kōrero hapa hei mea whaikiko mēnā, ahakoa takitahi, ahakoa tōpū,

ko te tūmanako whaitake tērā tonu pea ka awea ngā whakatau a ngā kaipānui i muri i te pānui i aua tauākī pūtea me ngā mōhiohio whakatutuki.

Mō ngā kōrero tahua i pūrongoatia i ngā tauākī pūtea me ngā mōhiohio whakatutuki, i whāiti ā mātou tukanga ki te tiroiro i whakaae ngā mōhiohio ki tā Te Taura Whiri tauākī o ngā tūmanakohanga whakatutuki, me ngā Utunga ā- Tau me ngā Utunga ā-Tau Tāpiri o Ngā Pūtea 2022/23.

Kāore i arotakea te haumaruru me ngā whakahaere o ngā whakaputanga tāhiko o ngā tauākī pūtea me ngā mōhiohio whakatutuki.

Hei wāhanga o te tātari e ai ki Ngā Paerewa Arotake a Te Mana Arotake, ka whakamahi mātou i te whakawā ngaio me te mau tonu ki te hokirua ngaio puta noa i te tātari. I tua atu:

- + Ka tautuhi mātou me te aromatawai i ngā mōrea o ngā kōrero hapa o ngā tauākī pūtea me ngā mōhiohio whakatutuki, ahakoa nā te tinihanga, nā te hē rānei, ka waihanga me te whakatinana i ngā tukanga tātari kaute e urupare ana ki aua mōrea, me te whai taunakitanga tātari kaute e rawaka ana, e tōtika ana hoki ki te tuku i tētahi pūtaka mō tā mātou whakatau. He teitei ake te tūponotanga kāore e kitea he kōrero hapa whaikiko e ahu mai ana i te mahi māminga, i tērā e ahu mai ana i te hapa pokerehū, nā te mea ka whai wāhi pea ki te mahi māminga te mahi kūpapa, te tāwhai, ngā hapa mārīre, ngā aweketanga, me te takahi i ngā whakahaerenga o roto.
- + Ka whai mōhiohio mātou ki ngā whakahaerenga o roto e hāngai ana ki te tātari hei hoahoa tukanga arotake e hāngai ana ki ngā āhuatanga. Heoi anō, kāore e hoahoaia aua tikanga hei whakapuaki whakaaro ki te whaihua o ngā whakahaerenga o roto o Te Taura Whiri.
- + Ka arotake mātou i te tōtikatanga o ngā kaupapa here mahi kaute me te whai take o ngā whakatau tata mahi kaute me ngā puakanga hāngai a te Poari.
- + Ka arotake mātou i te tōtikatanga o ngā mōhiohio whakatutuki kua pūrongoatia i roto i tā Te Taura Whiri anga pūrongo i ana whakatutukinga.
- + Ka whakatau mātou i runga i te tōtikatanga o tā te Poari whakamahi i tōna kaupapa mahi tātari, ā, i runga anō i ngā taunakitanga tātari kua riro, mēnā kei reira he kumukumu whaikiko e pā ana ki ngā mahi me ngā āhuatanga ka whakaatu kāore pea e taea e Te Taura Whiri te noho tuwhera tonu mō muri atu. Ki te whakatau mātou he kōrero ahurangi kei reira,

e herea ana mātou ki te whakaatu i roto i tā mātou pūrongo tātari kaute i ngā puakanga hāngai i roto i ngā pūrongo pūtea me ngā mōhiohio whakatutuki, tērā rānei, ki te kore e rawaka rānei aua puakanga, ki te whakarerekē i tā mātou whakatau. E ahu mai ana ā mātou whakatau i ngā taunakitanga tātari kua riro tae noa ki te rā o tā mātou pūrongo kaitātari. Heoi anō, ka noho ngā mahi, āhuatanga rānei ā muri atu he pūtake pea kia whakamutu a Te Taura Whiri ki te mahi i ana mahi.

- + Ka arotakehia e mātou ngā whakaaturanga whānui, hanganga me ngā mea katoa kei roto i ngā tauākī pūtea me ngā mōhiohio whakatutuki, tae atu ki ngā puakanga, ā, mēnā e tika ana te whakaatu a ngā tauākī pūtea me ngā mōhiohio whakatutuki i ngā tino tauwhitinga me ngā putanga ake.

Ka kōrero atu mātou ki te Poari mō te whānuitanga me te wā o te tātari kaute, i tua atu i ētahi atu take, me ngā kitenga nui o te tātari kaute, tae atu ki ngā hapa nui o ngā whakahaere o roto ka kitea i roto i tā mātou tātari kaute.

I takea mai ā mātou kawenga i te Public Audit Act 2001.

He Mōhiohio Anō

Kei te Poari te kawenga mō ētahi atu o ngā kōrero. Ko ērā atu o ngā kōrero ko ngā kōrero ērā kei ngā whārangi 1 ki te 25, 55 ki te 60, me te 65, engari ehara ko ngā tauākī pūtea me ngā mōhiohio whakatutuki, me te pūrongo a tā mātou kaitātari kaute.

Kāore e kapi i tā mātou whakatau mō ngā tauākī pūtea me ngā mōhiohio whakatutuki ērā atu

mōhiohio, ka mutu kāore ā mātou whakatau ā-tātari kaute, whakaūtanga rānei mō ērā.

Mō te āhuatanga ki tā mātou tātari kaute i ngā tauākī pūtea me ngā mōhiohio whakatutuki, ko tā mātou kawenga he pānui noa i ērā atu kōrero. Nā tēnei, ka whiriwhiri mātou mēnā kāore i te tika ērā atu kōrero ki ngā tauākī pūtea me ngā mōhiohio whakatutuki, ko ngā mōhiohio rānei i riro mai i te tātari kaute, i tētahi atu tikanga rānei kei te hapa te takoto. Mēnā, whai mai ana i ā mātou mahi, ko te whakatau he kōrero hapa whaikiko i roto i ērā atu mōhiohio, me pūrongo tēnā e mātou. Kāore i a mātou he mea hei pūrongo atu e pā ana ki tēnei.

Motuhaketanga

E noho motuhake ana mātou i Te Taura Whiri, ā, e ai ki ngā whakaritenga tū motuhake a Ngā Paerewa Arotake a te Kaitātari Matua, kei roto ko te Paerewa Ngaio me te Matatika 1: Te Tikanga Matatika Aowhānui mā Ngā Tohunga Whakatūturu (tae atu ki Ngā Paerewa Motuhake Aowhānui) (Aotearoa) (PES 1) i tukua e Te Kāwai Ārahi Pūrongo Mōwaho.

I tua atu tō mātou kaha kaitātari, karekau ō mātou hononga, ō mātou pānga rānei, ki Te Taura Whiri.



Talia Anderson-Town

Silks Audit Chartered Accountants Ltd

mō Te Mana Arotake

Whanganui, New Zealand

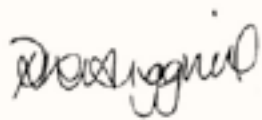
Te Tauākī Noho Haepapa

Ko te Poari kei te pīkau i te haepapa mō te whakatakotoranga o ngā tauākī pūtea me te tauākī mō ngā tutukinga a Te Taura Whiri i te Reo Māori, tae atu ki ngā whiriwhiringa o roto.

Kei te noho haepapa anō mātou i ngā pārongo tutukinga mō te mutunga o te tau ka horahia e Te Taura Whiri i te Reo Māori i raro i te wāhanga 19A o te Ture Pūtea Tūmatanui, 1989.

He kawenga anō kei runga i te Poari ki te whakatū, ki te tauwhiro anō hoki i tētahi pūnaha whakatina tara ā-whare e āta kitea ai, āe, e tika ana, e pono ana ngā mahi pūrongorongo pūtea.

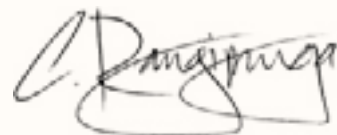
Ko te whakaaro iho o te Poari, e whakaata tika ana ēnei tauākī pūtea me te tauākī mō ngā tutukinga i te tūnga pūtea me ngā mahi i kawea e Te Taura Whiri i te Reo Māori i te tau i eke i te 30 o Pipiri 2023.



Professor Rawinia Higgins

Toihau

31 o Whiringa-ā-nuku 2023



Charisma Rangipunga

Toihau Tuarua

31 o Whiringa-ā-nuku 2023

Te Tauākī Whiwhinga, Whakapaunga Whānui

Mō te tau i eke i te 30 o Pipiri 2023

2021–22 Tūturu \$	Whakamārama	2022–23 Tūturu \$	2022–23 I tohua \$
NGĀ WHIWHINGA			
Whiwhinga whakahaere mai i te Karauna			
13,364,000	Tāpuinga whakahaere	11,664,000	11,664,000
13,364,000	Te katoa o ngā whiwhinga whakahaere mai i te Karauna	11,664,000	11,664,000
Ētahi atu whiwhinga			
43,086	Whiwhinga huamoni	188,374	80,000
2,486	Ētahi atu whiwhinga	852,947	210,000
45,572	Te katoa o ngā whiwhinga mai i wāhi kē	1,041,321	290,000
13,409,572	Te katoa o ngā whiwhinga	12,705,321	11,954,000
NGĀ WHAKAPAUNGA			
Whakapaunga whakahaere			
4,477,278	Utu kaimahi	6,003,780	6,363,047
242,165	Whakapaunga hekenga wāriu, whakaurupātanga	267,638	534,301
5,742,767	Whakapaunga whakahaere	7,215,310	7,670,563
10,462,210	Te katoa o ngā whakapaunga	13,486,728	14,567,911
2,947,362	Te hemihemi/ (tarepa) taha whakahaere me te katoa o ngā whiwhinga, whakapaunga whānui	(781,407)	(2,613,911)

He wāhanga taketake tonu nō ēnei tauākī pūtea ngā kaupapa-here kaute me ngā whakamārama mō ngā tauākī pūtea e mau atu nei. Kei te whakamārama 16 ngā kōrero mō ngā tihoinga tawhiti mai i te pūtea i tohua.

Te Tauākī Tūnga Pūtea

I te 30 o Pipiri 2023

2021–22 Tūturu \$		Whakamārama	2022–23 Tūturu \$	2022–23 I tohua \$
NGĀ HUARAWA				
Ngā huarawa wātea				
9,365,966	Moni ukauka me ōna ritenga	5	6,831,989	6,397,316
0	Nama ka utua mai	6	977,500	-
207,045	Tāke hokohoko ka tae mai		92,626	50,000
123,169	Utu tōmua		121,456	30,000
9,696,180	Te katoa o ngā huarewa wātea		8,023,661	6,477,316
Ngā huarawa he here kei runga				
642,335	Whare, utauta, taputapu	7	2,300,061	848,713
202,327	Huarawa whakawairua	8	995,359	225,000
318,796	Mahi e koke tonu ana	7	94,618	-
1,163,458	Te katoa o ngā huarawa he here kei runga		3,390,038	1,073,713
10,859,638	Te katoa o ngā huarawa		11,413,699	7,551,029
NGĀ TAUNAHATANGA				
Ngā taunahatanga o tēnei wā				
423,867	Ngā nama kia utua atu	9	480,842	50,000
-	- Ngā tahua tae tōmua		600,000	-
-	- Ngā whiwhinga tae tōmua		250,000	-
412,047	Ngā whakawhiwhinga kaimahi - o nāiane	10	803,343	350,000
835,914	Te katoa o ngā taunahatanga o tēnei wā		2,134,185	400,000
Ngā huarawa he here kei runga				
6,804	Ngā whakawhiwhinga kaimahi - tautini	10	44,001	5,000
6,804	Te katoa o ngā taunahatanga o raurangi		44,001	5,000
842,718	Te katoa o ngā taunahatanga		2,178,186	405,000
10,016,920	Ngā huarawa more		9,235,513	7,146,029
10,016,920	Te katoa o te tūtanga		9,235,513	7,146,029

He wāhanga taketake tonu nō ēnei tauākī pūtea ngā kaupapa-here kaute me ngā whakamārama mō ngā tauākī pūtea e mau atu nei. Kei te whakamārama 16 ngā kōrero mō ngā tihoinga tawhiti mai i te pūtea i tohua.

Te Tauākī Nekeneke Tūtanga

Mō te tau i eke i te 30 o Pipiri 2023

2021–22 Tūturu \$		Whakamārama	2022–23 Tūturu \$	2022–23 I tohua \$
7,069,558	Pūtea whānui		10,016,920	9,759,940
7,069,558	Te katoa o te tūtanga Karauna i te 1 o Hōngongoi 2022		10,016,920	9,759,940
2,947,362	Hemihemi/ (tarepa) o roto i ngā mahi whakahaere		(781,407)	(2,613,911)
2,947,362	Te katoa o te hemihemi/(tarepa)		(781,407)	(2,613,911)
10,016,920	Te katoa o te tūtanga Karauna i te 30 o Pipiri 2023		9,235,513	7,146,029

He wāhanga taketake tonu nō ēnei tauākī pūtea ngā kaupapa-here kaute me ngā whakamārama mō ngā tauākī pūtea e mau atu nei. Kei te whakamārama 16 ngā kōrero mō ngā tihoinga tawhiti mai i te pūtea i tohua.

Te Tauākī Kapewhiti

Mō te tau i eke i te 30 o Pipiri 2023

2021–22 Tūturu \$	Whakamārama	2022–23 Tūturu \$	2022–23 I tohua \$
KAPEWHITI O ROTO I NGĀ MAHI WHAKAHAERE			
I tae mai he moni i (i whakapaua ki) ngā			
13,364,000	Whiwhinga mai i te Karauna	11,664,000	11,664,000
43,086	Whiwhinga huamoni	188,374	80,000
2,485	Whiwhinga i wāhi kē	725,447	210,000
(5,903,409)	Utu ratonga, utu hautaonga	(7,158,497)	(8,620,686)
(4,337,423)	Utu kaimahi	(5,276,923)	(6,411,047)
(56,631)	Utu tāke hokohoko	114,419	50,000
3,112,108	Kapewhiti more o roto i ngā mahi whakahaere	256,820	(3,027,733)
KAPEWHITI O ROTO I NGĀ MAHI HAUMI			
I tae mai he moni i (i whakapaua ki) te:			
(428,924)	Hokonga whare, utauta, taputapu	(2,197,187)	(1,035,000)
(335,367)	Hokonga hua whakawairua	(593,610)	(300,000)
(764,291)	Kapewhiti more o roto i ngā mahi haumi	(2,790,797)	(1,335,000)
2,347,817	Te (hekenga)/pikinga more i te moni ukauka me ōna ritenga	(2,533,977)	(4,362,733)
7,018,149	Te moni ukauka me ōna ritenga i te timatanga o te tau	9,365,966	10,760,049
9,365,966	Te moni ukauka me ōna ritenga i te paunga o te tau	6,831,989	6,397,316
9,365,966	E tohua ana ki: Te moni ukauka me ōna ritenga	6,831,989	6,397,316

He wāhanga taketake tonu nō ēnei tauākī pūtea ngā kaupapa–here kaute me ngā whakamārama mō ngā tauākī pūtea e mau atu nei. Kei te whakamārama 16 ngā kōrero mō ngā tihoinga tawhiti mai i te pūtea i tohua.

Ngā Whakamārama i ngā Tauākī Pūtea

1. Te Tauākī Kaupapa–here Kaute

1.1 He hinonga me mātua tāpae pūrongo

He hinonga nā te Karauna Te Taura Whiri i te Reo Māori, e tautuhia nei tōna hanga e te Ture Hinonga Karauna 2004. Kei Aotearoa tōna whare, kei Aotearoa āna mahi. Ko ētahi o ngā tino ture e whakahau ana me pēhea te āhua o āna whakahaere, ko te Ture Hinonga Karauna 2004 me te Ture mō te Reo Māori 2016. Ko te matua o Te Taura Whiri i te Reo Māori, ko te Karauna o Aotearoa.

Ko tā mātou whāinga matua, he tuku ratonga ki te iwi tūmatanui o Aotearoa. Kāore mātou e whai kia puta ake he hua taha moni nei i ā mātou kawenga.

Nā Te Taura Whiri i te Reo Māori tonu te whakatau he hinonga ia ka whakaputa painga ki te iwi tūmatanui (PBE) mō te wāhi ki ngā mahi pūrongorongo taha pūtea.

Mō te tau i eke i te 30 o Pipiri 2023 ēnei tauākī pūtea a Te Taura Whiri i te Reo Māori, ā, i whakaaetia e ngā Kaiwhiri i te 30 o Whiringa-ā-nuku 2023.

1.2 Te tūāpapa o ngā whakatakataka

He mea whakarite ngā tauākī pūtea i runga i te whakaaro he whakahaere taumano tēnei. I taurite te āhua o te whakahāngai i ngā kaupapa–here kaute i te roanga o te tau.

TE TAUĀKĪ MŌ TE Ū KI NGĀ WHAKAHAU E HĀNGAI ANA

He mea whakatakoto ngā tauākī pūtea a Te Taura Whiri i te Reo Māori i runga i te whai i ngā whakahau a te Ture Hinonga Karauna 2004. Ko tētahi o aua whakahau, kia hāpaingia ngā tikanga kaute e whakaaetia whānuitia ana i Aotearoa (NZ GAAP).

Kua whakatakotoria hoki kia ū ki ngā paerewa kaute PBE kei te Upane 2. E āhei ana mātou te whai i ngā paerewa kaute o te Upane 2 i te mea he iti ake i te \$30 miriona ā mātou whakapaunga.

E hāpai ana ēnei tauākī pūtea i te Ritenga Whāki Pūiti o ngā Paerewa PBE.

TE MONI WHAKAATU ME TE WHAKAAWHIWHI

He mea whakaatu ngā tauākī pūtea ki ngā tāra o Aotearoa.

1.3 Te whakarāpopoto i ngā kaupapa–here tāpua

NGĀ WHIWHINGA

Kei raro nei ngā whakamārama i ngā kaupapa–here kaute whāiti i whāia mō ngā whiwhinga tāpua:

Ngā whiwhinga mai i te Karauna

Ko te nuinga o ngā moni a Te Taura Whiri i te Reo Māori, e ahu mai ana i te Karauna. Ko te whakaatu, te kore rānei e whakaatu i ngā whiwhinga whakawhiti–kore mai i ngā taha, kei te āhua tonu o ngā tohutohu kei runga i te whakamahinga o te huarawa kua whakawhitia.

Mēnā he ‘here’ te tohutohu, e whakahau ana te tangata ka whiwhi i te pūtea kia whakahoki i ngā rawa i whiwhi rā ia mēnā kāore e rite tāna whakamahi i aua rawa ki tā ngā whakaritenga i tohutohu ai, me te aha, riro ana hei taunahatanga ka kīia i muri mai he whiwhinga whakawhiti–kore, ina ea ngā ‘here’.

Mēnā he ‘aukati’ te tohutohu, kāore e mātua whakahau te tangata ka whiwhi i te pūtea kia whakahoki i ngā rawa i whiwhi rā ia mēnā kāore e rite tāna whakamahi i aua rawa ki tā ngā whakaritenga i tohutohu ai, me te aha, kāore e whakaaturia hei taunahatanga whakawhiti–kore, engari ia, riro tonu atu hei whiwhinga whakawhiti–kore.

Ko ngā pūtea e tae mai ana ki Te Taura Whiri i te Reo Māori, me pau anake ki te whakatutuki i ngā whāinga e tohua ana mō aua moni i te ture nāna te whakahaere nei i whakatū, tae atu ki ngā whakaritenga a te hunga ko rātou e tuku mai ana i ngā moni.

Ko te mōhio iho o Te Taura Whiri i te Reo Māori, karekau ana he here i runga i te pūtea kua tukuna mai, nō reira ka whakaaturia hei whiwhinga i te wā tonu e tika ana kia tae mai.

Kua whakatauria ko te wāriu tōkeke o ngā whiwhinga mai i te Karauna, e taurite ana ki ngā rahinga kei ngā whakaritenga homai pūtea.

Ngā whiwhinga i ngā pūtea kaitautoko

Ka ahu mai ēnei whiwhinga i ngā rōpū ka tautoko ā–pūtea i Te Wiki o te Reo Māori me Ngā Tohu Reo Māori, ā, e kīia ana he whiwhinga tē taea te whakawhiti.

Ngā whiwhinga i ngā huamoni

Ka whakaaturia ngā whiwhinga huamoni i runga i te tikanga huamoni whaihua.

Te tuku ratonga

Ko ngā ratonga ka tukuna ki ngā hunga tuatoru i runga i ngā whakaritenga tauhokohoko, he kurutete whakawhiti. Ka whakaaturia ngā whiwhinga i ēnei ratonga i runga i te ōwehenga o te mahi kua tutuki i te rā whakaatu i te tūnga pūtea.

NGĀ RĪHI

Ngā rīhi whakahaere

He rīhi tēnei e kore ai e āta tukuna māiretia ki te kairīhi ngā tūraru me ngā painga ka hua ake i te noho hei rangatira mō tētahi huarawa.

Ko ngā utu rīhi i raro i te rīhi whakahaere, ka whakaaturia hei whakapaunga i runga i te tikanga rārangi torotika mō te roa o ngā rā e mana ana te rīhitanga.

Ko ngā poapoa taha rīhi ka tau mai, ka whakaaturia ki te hemihemi, ki te tarepa rānei hei whakahēkenga utu rīhi i te roanga o ngā rā e mana ana te rīhi.

TE MONI UKAUKA ME ŌNA RITENGA

Ka uru mai ki tēnei karangatanga: te moni kei te ringa, ngā moni tonono ake kei te pēke, me ētahi atu moni haumi he māmā noa te tiki atu, e toru marama iti ake rānei te roa e eke ai te haumitanga.

NGĀ MAHI HAUMI

Ngā moni ka kuhuna ki te pēke

Ka inea tuatahitia ngā moni haumi ka kuhuna ki te pēke i runga tonu i te rahi o te moni i kuhuna.

TE WHARE, TE UTAUTA, TE TAPUTAPU

Kei te whare, te utauta me te taputapu ngā karangatanga huarawa e whai ake nei: ngā whakapaipai whare rīhi, ngā taonga noho whare, ngā taputapu IT me ngā taputapu tari.

He mea ine ngā karangatanga huarawa katoa i runga i te utu hoko, otirā, me te tango anō i te hekenga wāriu whakapipi me ngā numanga waimaerotanga.

Ngā tāpiritanga

Ko te utu o te whare, te utauta, te taputapu rānei, ka kīia he huarawa i ngā wā anake e puta ake ai he hua ōhanga, he hua ratonga rānei i taua mea rā ki Te Taura Whiri i te Reo Māori ā tōna wā, ā, ka taea tōna utu te āta ine mārire.

Ko ngā tāpiritanga he iti iho i te \$2,000 te wāriu, e kore e whakaurua ki te pūrāwa, engari ka kīia he whakapaunga mā roto i te Tauākī Whiwhinga, Whakapaunga Whānui.

Mō ngā mahi kāore anō i oti, ka whakaaturia ko te utu hoko kua oti te waimaerotanga te tango, ā, kāore e whakahaekia tōna wāriu.

I te nuinga o te wā, mō te whare, te utauta, te taputapu rānei, ka whakaaturia tuatahitia ko tōna utu hoko.

Ko ngā tāpiritanga he iti iho i te \$2,000 te wāriu, e kore e whakaurua ki te pūrāwa, engari ka kīia he whakapaunga mā roto i te Tauākī Whiwhinga, Whakapaunga Whānui.

Ngā tukunga

Ka whakatauria ngā huanga me ngā numanga i ngā tukunga mā te whakatairite i te moni i riro mai ki te wāriu kawē o te huarawa. Ka pūrongoitia te wāriu more o ngā huanga me ngā numanga i ngā tukunga ki te hemihemi, ki te tarepa rānei.

Ngā utu whai i muri

Ko ngā utu ka whai i muri i te rironga mai o tētahi hanga, ka whakaurua ki te pūrāwa i ngā wā anake

e whakaponotia ana ka rere mai he painga taha ōhanga, taha ratonga rānei i a ia ki Te Taura Whiri i te Reo Māori, ā, e taea ana te utu o te mea rā te āta ine.

Te Hekenga Wāriu

Mō te wāhi ki te whare (hāunga ia te whenua), te utauta me te taputapu, he mea tuhi te hekenga wāriu i runga i te tikanga rārangi torotika. Ka whakakorea haerehia te utu (te wāriutanga rānei) o te huarawa kia tae rawa ki tōna wāriu whakamutunga hei te ekenga o ngā tau e ora pai ana, e tū pai ana a ia. Ko ngā whakaaro mō ngā tau e ora pai ana ngā karangatanga matua o ēnei mea, me ngā hekenga wāriu, e pēnei ana:

- + whakapainga whare rīhi 20.0% rārangi tōtika (SL)
- + taonga noho whare 20.0% SL
- + taputapu tari 20.0% SL
- + taputapu IT 25.0% SL

He mea whakahaekia te wāriu o ngā whakapaipai whare rīhi mō te wā o te rīhi e toe tonu ana, mō te wā rānei e ora pai ana, e tū pai ana aua whakapaipai – ko te mea poto ake o ēnei.

Ko te wāriu e toe ana me te roa e ora pai ana tētahi huarawa, ka tirohia, ka whakatikaina mehemea e tika ana kia whakatikaina, i te mutunga o ia tau pūtea.

NGĀ HUARAWA WHAKAWAIRUA

Te hoko me te waihanga pūmanawa rorohiko

Ka whakaurua ngā raihana pūmanawa rorohiko ka riro mai ki te pūrāwa, i runga i te āhua o te utu i utua kia riro mai ai, kia tika ai rānei tāna mahi.

Ka kīia he huarawa whakawairua ngā utu e hāngai pū ana ki te hanganga o ngā pūmanawa rorohiko mō ngā mahi tara ā-whare. Ko ētahi o ngā utu hāngai, ko te waihanga pūmanawa rorohiko, ko ngā utu kaimahi, me te hautanga o ngā utu whakahaere e tika ana.

Ka whakaaturia ngā utu whakangungu kaimahi hei whakapaunga i te wā e ara ake ai.

Ka whakaaturia ngā utu tauwhiro pūmanawa rorohiko hei whakapaunga i te wā e ara ake ai.

He pērā anō ngā utu waihanga, tauwhiro i tā mātou pae tukutuku – ka whakaaturia hei whakapaunga i te wā e ara ake ai.

Te Whakaurupātanga

He mea whakaurupā te wāriu kawē o tētahi huarawa whakawairua oranga poto i runga i te tikanga rārangi torotika, mō ngā tau e ora ana, e whaihua tonu ana a ia. Ka tīmata te whakaurupātanga i te wā e wātea ai te huarawa kia whakamahia, ā, hei te tangohanga o te huarawa i ngā pukapuka kaute mutu ai. Ka whakaaturia te utu whakaurupātanga mō ia tau pūtea ki te hemihemi, ki te tarepa rānei.

Kua pēnei te whakatau tata i te oranga whaihua o ngā karangatanga matua o ngā huarawa whakawairua, me te ōrau whakaurupātanga e rite ana:

+ Ngā pūmanawa rorohiko kua riro mai 25.0% SL

NGĀ HUARAWA KĀORE E MAHI MONI

Karekau ā Te Taura Whiri i te Reo Māori huarawa hei mahi moni māna. Ka kīia tētahi huarawa he hua mahi moni mehemea ko te mahi moni tāna kaupapa matua.

Te waimaerotanga o te whare, te utauta, te taputapu, me ngā huarawa whakawairua

Ko te whare, ngā utauta, ngā taputapu me ngā huarawa whakawairua e puritia ana i runga i te utu hoko, ā, kāore i mutunga kore ngā rā e ora pai ana aua mea rā, ka arotakea mō te tūpono kua waimaero ina pā he āhuatanga e whakaarotia ai tērā pea e kore e hoki mai te katoa o te rahinga kawē. Ka whakatauhia te numanga waimaero i runga i te nui ake o te rahinga kawē o te huarawa i te rahinga ratonga tērā e hoki mai. Ko te rahinga ratonga tērā e hoki mai, ko te mea nui ake o te wāriu tōkeke whai muri i te tangohanga o ngā utu mō te hoko atu, me te wāriu i te wā e whakamahia ana.

Whakatauria ai te wāriu whakamahi i runga i te utu hoko o te mea hou kua oti tōna wāriu te whakaheke ki tērā e tika ana, i te utu rānei ki te āta whakahou, i te waeine ratonga rānei. Ko te mea o ēnei e tika ana, kei te āhua tonu o te āhua o te waimaerotanga me te wātea mai o ngā pārongo e rite ana.

Mehemea he nui ake te rahinga kawē o te huarawa i te rahinga ratonga ka hoki mai i te hokonga atu, ka kīia kua waimaero te huarawa, ā, ka whakaheke te rahinga kawē ki tērā e hoki mai me i hokona atu. Ko te tapeke o te numanga i te waimaerotanga, ka tuhia ki te hemihemi, ki te tarepa rānei.

Waihoki, ki te huripokina tētahi numanga waimaerotanga, ka whakaaturia anō tēnei ki te hemihemi, ki te tarepa rānei.

NGĀ NAMA KIA UTUA ATU

Tuhia ai ngā nama kia utua atu i te wā poto ki te uara mata o tēnā, o tēnā.

NGĀ WHAKAWHIWHINGA KAIMAHI

Ngā whakawhiwhinga kaimahi aupoto

Ko ngā whakawhiwhinga kaimahi me whakaea i roto i te 12 marama i muri i te ekenga o te wā i mahi ai te kaimahi, he mea ine i runga i ngā whakawhiwhinga tāpiripiri, i runga anō i ngā pāpātanga utu o taua wā tonu. Kei roto ko te whakaputunga o ngā utu ā-tau, utu ā-hāora rānei tae noa ki te rā whakaatu tūnga pūtea, me ngā rā matangaronga ā-tau kāore i pau i mua i taua rā.

Ngā whakawhiwhinga kaimahi auroa

Ko te whiwhinga kaimahi ko tōna whakaeatanga kei tua o te 12 marama i muri i te mutunga o te mahi a

te kaimahi, pēnei i te matangaronga mahiroa, me te takoha rītāia, he mea tātai mā te huarahi whakariterite. He mea whakatau ēnei tātaitanga i runga i:

+ ngā whakawhiwhinga i ngā rā kei tua ka haupū mai ki te kaimahi, i runga i te āhua o ngā tau kua mahi rā ia, ngā tau e toe ana i mua i te whakawhiwhinga, te kaha tūpono ka tae te kaimahi ki te wā whakawhiwhi, me ngā kupu kirimana mō te whakawhiwhinga;

+ te wāriu o nāianei o ngā kapewhiti kei tua kua oti te whakatau tata.

Te whakaatu i ngā whakawhiwhinga kaimahi

Ka kīia te matangaronga ā-tau me te matangaronga mahiroa ngā he taunahatanga o tēnei wā. Ko te matangaronga mahiroa kāore i ngā me ngā takoha rītāia ko te tikanga ka ea i roto i te 12 marama mai i te rā whakaatu tūnga pūtea, ka kīia he taunahatanga o tēnei wā. Katoa ērā atu whakawhiwhinga kaimahi, ka kīia he taunahatanga o raurangi.

NGĀ KAUPAPA PENAPENA MONI MŌ TE KAUMĀTUATANGA

Ngā kaupapa moni kuhu kua tautuhia

Ko ngā here mō ngā moni ka kuhuna ki a Kiwisaver me te State Sector Retirement Savings Scheme, ka kīia he kaupapa penihana moni kuhu kua oti te tautuhi, ā, ka whakaaturia hei whakapaunga i te hemihemi, i te tarepa rānei i te wā e ara ake ai.

TE TŪTANGA

He pūtea kotahi te tūtanga; i tēnei tau, he takoha pūrawa kei te tūtanga, arā, ko te toenga o te Tahua o Mā Te Reo. Ko te tūtanga te mea ka toe mai ina tangohia ngā taunahatanga katoa i ngā huarawa katoa. Ka wehewehea te tūtanga ki ēnei karangatanga e whai ake nei:

+ ngā takohatanga pūrawa

+ te hemihemi/(tarepa) whakapipi

+ te wāriu tōkeke o roto mai i ētahi atu tāpuinga whiwhinga, whakapaunga whānui.

TE TĀKE HOKOHOKO

Katoa ngā mea e whakaaturia ana ki ngā tauākī pūtea, kāore i tāpiria mai te tāke hokohoko, hāunga anō ngā nama kia utua mai me ngā nama kia utua atu – kei roto kē te tāke hokohoko i ērā rahinga. I ngā wāhi kāore e hoki mai te tāke hokohoko hei tāke kōkahu mai, ka kīia he wāhanga tonu nō te huarawa, nō te whakapaunga rānei e hāngai ana.

Ko te rahi more o te tāke hokohoko ka tae mai i a IRD, ka utua atu rānei ki a IRD, ka kuhuna ki ngā nama kia utua mai, kia utua atu rānei, i te tauākī tūnga pūtea.

Ko te tāke hokohoko more ka utua atu, ka tae mai rānei i a IRD, tae atu ki te tāke hokohoko e hua ake ana i ngā mahi haumi, takapūtea, ka kīia he kapewhiti whakahaere more i te tauākī kapewhiti.

Ka whakaaturia ngā paihere me ngā whakawhirinakitanga me te kore e whakapiri atu i te tāke hokohoko.

TE TĀKE I NGĀ MONI WHIWHI

He mana tūmatanui Te Taura Whiri i te Reo Māori. Me te aha, kāore ia e mate ki te utu tāke i āna moni whiwhi. Koia rā te take i kore ai e tāpuia he moni hei utu tāke moni whiwhi.

NGĀ TĪTARINGA PŪTEA

He mea whakarite ngā kōrero pūtea i runga anō i te NZ GAAP, e whakamahi ana i ngā kaupapa–here kaute e rere tahi ana me ērā i whakamanaia e ngā Kaiwhiri i te takanga o ēnei tauākī pūtea.

TE TIRITIRINGA UTU

Kotahi anō te karangatanga tutukinga a Te Taura Whiri i te Reo Māori, engari he maha ngā tutukinga/whāinga, e tūtuhia rā i Te Tauākī Koronga mō ngā Mahi kia Tutuki.

He mea tiritiri ngā Whiwhinga me ngā Whakapaunga mō te tau ki ngā whāinga matua/tutukinga e whakaahuatia ana i tā mātou Tauākī Koronga mō ngā Mahi kia Tutuki 2021–22.

Ko ngā utu arorangi, koirā ngā utu i ahu katoa mai i te whāinga/tutukinga kotahi. Ko ngā utu autaki, koirā ngā utu tē taea te tautohu mārika, e nui ake ai ngā painga i ngā ngoikoretanga ohaoha, i ahu mai i tētahi whāinga/tutukinga kotahi. Ko ngā utu arorangi, ka tukuna arorangi atu ki te/ngā whāinga/tutukinga e tika ana. Ko ngā utu autaki ia, ka tukuna ki ngā whāinga/tutukinga i runga i ngā mea e uruhi ana i ngā utu, ngā kawenga kōpūtahi me ngā pārongo whakamahi/whakapau e wātea ana.

1.4 Ngā whakatau tata waiwai me ngā whakapae waiwai i ngā mahi kaute

I te whakaritenga mai o ēnei tauākī pūtea, ka oti i Te Taura Whiri i te Reo Māori ētahi whakatau tata me ētahi whakapae mō ngā rā e heke mai nei.

Tērā tonu pea ka rerekē ēnei whakatau tata me ngā whakapae i ngā āhuratanga tūturu ka eke. He rite tonu te tiroiro i ngā whakatau tata me ngā whakapae, ka mutu e whai ana i ngā tauira kua kitea i mua me ētahi atu āhuratanga, tae atu ki ngā whakapae whai takenga mō ngā rā kei tua.

Ko ngā whakatau tata me ngā whakapae e nui ana te tūpono ka mate tā mātou whakatika i ngā rahinga kawae o ngā hua me ngā taunahatanga ā te tau pūtea e heke mai nei, e kōrerotia ana i raro nei.

TE WHAKATAU TATA I TE ROA E PAI ANA TE WHARE, TE UTAUTA, TE TAPUTAPU, ME NGĀ WĀRIU HURUMUTUNGA O TĒNĀ, O TĒNĀ

I ia rā whakaatu i te tūnga pūtea, ka arotakea te oranga whaihua me ngā wāriu hurumutunga o te whare, ngā

utauta me ngā taputapu. He maha ngā āhuratanga hei whakaaro ake ina whakatauria te hāngai o ngā whakatau tata o te oranga whaihua me te wāriu hurumutunga o te whare, ngā rawa me ngā taputapu, pērā i te āhua tonu o te huarawa ki te whāwhā atu, ki te titiro atu, te roa e tika ana kia whakamahia te huarawa e Te Taura Whiri i te Reo Māori, me te nui o te moni e tika ana kia hoki mai i te hokonga atu o te huarawa ā tōna wā.

Ki te hē te whakatau tata i te roa e ora pai ana, i te wāriu hurumutunga rānei, ka tītaha te whakapaunga hekenga wāriu ka whakaaturia ki te hemihemi, ki te tarepa rānei, me te rahinga kawae o te huarawa i te tauākī tūnga pūtea. Hei whakaiti ake i te noho mōrearea i te kore e mōhio pū ki te whakatau tata e tika ana, ka whāia e Te Taura Whiri i te Reo Māori ēnei mahi:

- + ka titiro tinana e pēhea ana te āhua o ngā huarawa
- + ka takoto he hōtaka hoko huarawa hou hei whakakapi i te mea tawhito
- + ka arotakea ngā utu e hokona ai ētahi huarawa 'ringarua' āhua rite
- + ka tātarhia ngā huarawa kua hokona atu i mua atu i tēnei.

Kāore ā Te Taura Whiri i te Reo Māori whakarerekētanga nui i ngā whakapae o mua mō te āhua ki ngā oranga whaihua me ngā wāriu hurumutunga.

1.5 Ngā whakatau waiwai i roto i te whakahāngaitanga o ngā kaupapa–here kaute
Anei ngā whakatau waiwai a te tumu whakahaere mō te wāhi ki te whakahāngaitanga o ngā kaupapa–here kaute:

NGĀ KARANGATANGA RĪHI

Hei whakatau iho he rīhi taha pūtea rānei, he rīhi taha whakahaere rānei tētahi whakaaetanga rīhi, me āta whiriwhiri mehemea ka whakawhitia rā roto i te whakaaetanga te nuinga o ngā mōreareatanga me ngā painga ki Te Taura Whiri i te Reo Māori, karekau rānei.

Me whiriwhiri ēnei āhuratanga e whai ake (me ētahi atu): te wāriu tōkeke o te huarawa e rīhitia ana, te oranga ōhanga o taua huarawa, mehemea me kuhu he kōwhiringa whakahou ki te wā rīhi, ā, me te whakatau i te pāpātanga whakaheke utu e tika ana hei tātai i te wāriu o nāianei o ngā utu rīhi mōkito. Ki te whakatauria he rīhi taha pūtea, ka whakaaturia te huarawa ki te tauākī tūnga pūtea i raro i te karangatanga 'whare, utauta, taputapu'. Engari ki te whakatauria he rīhi whakahaere, kāore e whakaaturia hei huarawa.

Kua whiriwhiria e Te Taura Whiri i te Reo Māori te karangatanga tika mō āna rīhitanga taputapu, ā, oti ana te whakatau he rīhi whakahaere te katoa.

2. Ētahi atu whiwHINGA

2021–22 Tūturu \$		2022–23 Tūturu \$
	- Tautoko ā-pūtea	195,000
	- WhiwHINGA i ngā hōtaka pātui	654,900
2,486	Ētahi atu whiwHINGA	3,047
2,486	Te katoa o ngā whiwHINGA i wāhi kē	852,947

3. Utu kaimahi

2021–22 Tūturu \$		2022–23 Tūturu \$
3,919,483	Utu ā-tau, ā-hāora	4,819,767
279,168	Ētahi atu whakapaunga taha kaimahi	583,885
138,772	Takoha a te kaituku mahi ki te mahere moni kuhu kua tautuhia	171,636
139,855	Pikinga/ (hekenga) i ngā whakawhiwHINGA kaimahi	428,493
4,477,278	Te katoa o ngā utu taha kaimahi	6,003,780

Kei roto i ngā takoha a te kaituku mahi ki ngā mahere moni kuhu kua tautuhia, ko ngā takoha ki a KiwiSaver me te State Sector Retirement Savings Scheme.

4. Whakapaunga taha whakahaere

2021–22 Tūturu \$		2022–23 Tūturu \$
64,800	Ngā utu ki Mana Arotake Aotearoa mō te arotakenga o ngā tauākī pūtea	64,800
39,292	Hāereere kaimahi	256,905
228,388	Pānui whakatairanga	330,325
	- Utu mātanga	-
2,469,021	Whakahaere tari	3,160,976
993	Mukunga atu (karangatanga iti, taha whakahaere)	342,858
2,490,891	Ringa kirimana	2,311,144
4,852	Whakapaunga whānui	6,366
18,871	Utu tānga	36,928
425,660	Rīhi	705,008
5,742,767	Te katoa o ngā whakapaunga taha whakahaere	7,215,310

5. Te moni ukauka me ōna ritenga

2021-22 Tūturu \$		2022-23 Tūturu \$
69,823	Moni i te pēke, moni i te ringa	150,053
9,296,143	Ōna ritenga - pūtea tono noa	6,681,936
9,365,966	Te katoa o ngā moni ukauka me ōna ritenga	6,831,989

Ko te wāriu kawē o ngā moni i kuhuna ki te pēke mō te toru marama iti ake rānei, e kātata ana ki te wāriu tōkeke o aua moni.

6. Ngā nama kia utua mai

2021-22 Tūturu \$		2022-23 Tūturu \$
	- Ngā nama kia utua mai (peke)	977,500
	- Te katoa o ngā nama kia utua mai	977,500
	Ko te katoa o ngā nama kia utua mai, koia ko Ngā nama kia utua mai i te hokonga atu o te taonga, o te ratonga rānei (kurutete whakawhiti)	977,500
	Ngā nama kia utua mai i ngā mahi tautoko ā-pūtea (kurutete whakawhiti-kore)	
	- Te katoa o ngā nama kia utua mai	977,500

7. Te whare, te utauta, te taputapu

E whai ake nei ngā koninga mō ia karangatanga whare , utauta , taputapu:

	Whakapainga Whare Rīhi \$	Taonga Noho Whare \$	Taputapu IT \$	Taputapu Whare \$	Whakarato ngā WIP \$	Tapeke \$
Utu wāriutanga						
Tapeke i te 1 o Hōngongoi 2021	1,128,770	285,071	478,514	24,422	-	1,916,776
Tapeke i te 1 o Hōngongoi 2022	1,132,750	306,315	670,464	45,290	94,618	2,249,436
Tāpiringa	2,121,559	18,165	54,856	2,607	-	2,197,186
Tukunga	(566,648)	(48,355)	(30,082)	(10,550)	-	(655,635)
Tapeke i te 30 o Pipiri 2023	2,687,661	276,125	695,238	37,347	94,618	3,790,988
Hekenga wāriu whakapipi						
Tapeke i te 1 o Hōngongoi 2021	630,695	239,208	405,080	14,974	-	1,289,957
Tapeke i te 1 o Hōngongoi 2022	750,692	257,052	485,388	19,353	-	1,512,485
Whakapaunga hekenga wāriu	120,357	12,645	57,341	6,260	-	196,603
Whakakorehanga i te tukunga atu	(269,587)	(20,223)	(17,165)	(5,802)	-	(312,777)
Tapeke i te 30 o Pipiri 2023	601,462	249,474	525,564	19,811	-	1,396,312
Rahinga kawē						
I te 1 o Hōngongoi 2021	498,075	45,863	73,435	9,447	-	626,820
I te 30 o Pipiri me te 1 o Hōngongoi 2022	382,058	49,263	185,075	25,937	94,618	736,951
Tapeke i te 30 o Pipiri 2023	2,086,199	26,651	169,674	17,536	94,618	2,394,679

Kāore he here i runga i te whare , i ngā utauta me ngā taputapu a Te Taura Whiri i te Reo Māori , i runga rānei i ngā whare , ngā utauta , ngā taputapu kua tāpuia hei taituarā mō ngā taunahatanga . I arotakea te whare , te utauta me te taputapu i te 2022-23 , ā , kāore i kitea he waimaerotanga .

8. Ngā huarawa whakawairua

	Pūmanawa hou \$	WIP-pae tukutuku \$	Tapeke \$
Utu wāriutanga			
Tapeke i te 1 o Hōngongoi 2021	411,885	-	411,885
Tāpiringa	204,746	224,178	428,924
Tapeke i te 1 o Hōngongoi 2022	616,631	224,178	840,809
Tāpiringa	864,067	-	864,067
Tukunga	-	-	-
Whakawhitinga WIP hei hoko pūmanawa rorohiko		(224,178)	(224,178)
Tapeke i te 30 o Pipiri 2023	1,480,698	-	1,480,698
Hekenga wāriu whakapipi			
Tapeke i te 1 o Hōngongoi 2021	396,380	-	396,380
Tapeke i te 1 o Hōngongoi 2022	414,303	-	414,303
Whakapaunga hekenga wāriu	71,035	-	71,035
Tukunga			
Tapeke i te 30 o Pipiri 2023	485,338	-	485,338
Rahinga kawae			
I te 1 o Hōngongoi 2021	15,505	-	15,505
I te 30 o Pipiri me te 1 o Hōngongoi 2022	202,327	224,178	426,505
Tapeke i te 30 o Pipiri 2023	995,359	-	995,359

Kāore he here i runga i te rangatiratanga o ngā huarawa whakawairua a Te Taura Whiri i te Reo Māori, i runga rānei i ngā huarawa whakawairua kua tāpuia hei taituarā mō ngā taunahatanga. I arotakea ngā pūmanawa rorohiko hou i te 2022-23, ā, kāore i kitea he waimaerotanga.

9. Ngā nama kia utua atu

2021-22 Tūturu \$		2022-23 Tūturu \$
254,675	Te hunga e noho nama atu ana mātou	333,569
169,192	Whakapaunga takahuihui	147,274
423,867	Te katoa o ngā nama kia utua atu	480,842

Kāore e rere he huamoni i te taha o ngā nama hokohoko me ērā atu nama kia utua, ko te tikanga, ka utua i roto i te 30 rā. E kātata ana te wāriu kawae o ngā kaituku nama mai me ērā atu nama kia utua ki te wāriu tōkeke o aua hanga.

10. Ngā whakawhiwhinga kaimahi

2021–22 Tūturu \$		2022–23 Tūturu \$
	Te tiri o nāianeī	
146,013	Utu ā-tau, ā-hāora takahuihui	251,787
266,034	Matangaronga ā-tau	351,556
-	Ētahi atu	200,000
412,047	Te katoa o te tiri kei tua	803,343
	Te tiri kei tua	
6,804	Matangaronga mahiroa	44,001
6,804	Te katoa o te tiri kei tua	44,001
418,851	Te katoa o ngā whakawhiwhinga kaimahi	847,344

11. Ngā paihere

2021–22 Tūturu \$		2022–23 Tūturu \$
16,502	Kāore i roa ake i te kotahi tau	14,043
43,560	He roa ake i te kotahi tau, engari kāore i roa ake i te rima tau	15,213
60,062	Te katoa o ngā paihere rīhi whakahaere tē taea te whakakore	29,256
43,501	Kāore i roa ake i te kotahi tau	895,428
-	He roa ake i te kotahi tau, engari kāore i roa ake i te rima tau	4,104,045
43,501	Te katoa o ngā paihere rīhi whare tē taea te whakakore	4,999,473

Ko ngā utu mōkito tāpiripiri ki tua me mātua utu i raro i – 1) ngā rīhi tē taea te whakakore me 2) ngā paihere rīhi whare tē taea te whakakore, kei runga ake nei.

I hainatia he whakaaetanga rīhi hou i te 19 o Hereturikōkā 2023 mō te 6 tau. E rua ngā āheitanga ki te whakahou, e 3 tau te roa o tēnā, o tēnā.

I pau te \$709,710 ki te rīhitanga whare, me te \$14,043 ki te rīhitanga taputapu i te tau pūtea 2022/2023

12. Ngā kurutete ki ngā rōpū whai pānga mai

2021–22 Tūturu \$		2022–23 Tūturu \$
<i>Kaiwhiri</i>		
82,800	Ngā taiutu	82,800
0.99	Te ritenga hei tūranga wā-poha	0.99
<i>Kāhui hautū</i>		
1,001,837	Ngā taiutu	1,135,633
5.42	Te ritenga hei tūranga wā-poha	6.00
1,084,637	Te katoa o ngā taiutu tumu whakarae	1,218,433
6.41	Te ritenga hei tūranga wā-poha	6.99

He hinonga nā te Karauna Te Taura Whiri i te Reo Māori.

Kāore i āta whakaaturia ngā kurutete ki ngā rōpū whai pānga mai i ū ki ngā tikanga māori o te ringa whakarato me te kiritaki/ringa whiwhi, mō ngā whakaritenga me ngā here kāore i nui ake, i te iti iho rānei te arotau i ērā ka hāpaitia e Te Taura Whiri i te Reo Māori me i mahi tahi ia ki taua rōpū, mō aua take anō, i runga i te tikanga 'whanganga'.

Waihoki, kāore i āta whakaaturia ngā kurutete ki ētahi atu whakahaere kāwanatanga, Hinonga Karauna rānei hei kurutete ki ngā rōpū whai pānga mai i ngā wāhi e ū ana ki ngā tikanga māori mō te mahi tahi ki ngā whakahaere kāwanatanga, me te hāpaitia anō o ngā here me ngā whakaritenga e tika ana mō aua kurutete.

Kāore tētahi kaiwhiri i whiwhi utu paremata, tētahi atu painga rānei i tua atu o ana utu kaiwhiri mō te wāhi ki ngā kirimana mātanga.

13. Ngā taiutu kaiwhiri

2021–22 Tūturu \$		2022–23 Tūturu \$
28,800	Professor Rawinia Higgins (Toihau)	28,800
13,500	Charisma Rangipunga (Toihau Tuarua)	13,500
13,500	Wayne Panapa	13,500
13,500	Dr Jeremy MacLeod	13,500
13,500	Bayden Barber	13,500
82,800	Te katoa o ngā taiutu kaiwhiri	82,800
Mema komiti		
1,800	Darren Beatty	-
-	Craig Owen	1,976
84,600	Te katoa o ngā taiutu kaiwhiri, mema komiti	84,776

He utu tonu i utua ki ētahi mema komiti i kopoua e te Poari, ehara aua tāngata i te mema o te Poari i te tau pūtea ka taha. Kāore tētahi Kaiwhiri i whiwhi moni paremata, tētahi atu hua rānei e pā ana ki te whāmutunga o tāna mahi (2021–22: \$karekau). Kua tīkina e Te Taura Whiri i te Reo Māori he inihua Taunahatanga, Kaupare Raru Ngaio mō ngā Kaitaki me ngā Āpiha i te tau pūtea ka taha, mō te wāhi ki ngā taunahatanga me ngā utu ki ngā Kaiwhiri me ngā kaimahi.

14. Ngā taiutu kaimahi

2021–22 Tūturu \$	Te katoa o ngā taiutu kua utua , kia utua rānei \$'000	2022–23 Tūturu \$
1	100–109	3
2	110–119	6
3	120–129	2
-	130–139	2
1	140–149	-
-	150–159	-
2	160–169	1
2	170–179	2
1	180–189	2
-	190–199	1
-	200–209	-
-	210–219	-
-	220–229	-
1	230–239	1
13	Te katoa o ngā kaimahi he neke atu i te \$100 , 000 te utu	20

I te tau i eke i te 30 o Pipiri 2023 , karekau he kaimahi (2021–22: 2) i whiwhi utu paremata , ētahi atu painga rānei i te whāmutunga o tana mahi , me te aha , ko te kore te tapeke i te 30 o Pipiri 2023 (2021–22: \$63 , 750) .

15. Ngā hanga whakanao pūtea

2021–22 Tūturu \$		2022–23 Tūturu \$
	Ngā huarawa taha pūtea , he mea ine i runga i te utu whakaurupā	
9 , 296 , 143	Ngā moni ukauka me ōna ritenga	6 , 681 , 936
9 , 296 , 143	Te katoa o ngā huarawa taha pūtea , he mea ine i runga i te utu whakaurupā	6 , 681 , 936
	Ngā taunahatanga taha pūtea , he mea ine i runga i te utu whakaurupā	
423 , 867	Ngā nama kia utua atu (hāunga ngā whiwhinga tōmua , ngā tāke kia utua , me ngā tahua kua tae mai he here anō kei runga)	480 , 842
423 , 867	Te katoa o ngā taunahatanga taha pūtea , he mea ine i runga i te utu whakaurupā	480 , 842

16. He whakamārama mō ngā tihoinga tawhiti i te pūtea i whakaritea

Kei raro nei e rārangi mai ana ngā tihoinga nui i ngā whakapaunga pūtea i whakaritea, i tāia hoki ki Te Tauākī Koronga mō ngā Mahi kia Tutuki

Te tauākī whiwhinga whānui

ĒTAHI ATU WHIWHINGA

He \$0.643 miriona te nui ake o ētahi atu whiwhinga i te mea i tohua, nā tā mātou mahi tahi ki ētahi atu pūtahi o te rāngai tūmatanui ki te kōkiri kaupapa reo Māori. Ko te whakanui i te huritau 50 o te petihana mō te reo Māori tēnā, me ētahi atu kaupapa whakatairanga anō. Hei āpiti ki tērā, arā hoki te takoha mai a te rangatira o tō mātou whare hou.

TE KATOA O NGĀ WHAKAPAUNGA

He iti ake ngā whakapaunga tapeke i tērā i whakaritea, ko te \$1.081 miriona te iti ake. I āhua rite ngā utu kaimahi ki tērā i tohua ai, engari \$1.527m te pikinga ake i tō tērā tau, i te mea e 40% te tokomaha ake o ngā kaimahi. Ko ētahi o ngā utu whakawhanake pae tukutuku me ērā atu whakapaunga ki te IT, i meahia hei whakapaunga taha whakahaere, engari i runga i ngā tohutohu mai i waho, ka whakapūrawatia kētia.

Te tauākī tūnga pūtea

TE KATOA O NGĀ HUARAWA

I hipa ake te katoa o ngā huarawa i tērā i tohua – e 3.863m te hipanga ake. Anei ngā take i pēnei ai: i nui ake ngā nama kia utua mai mō ngā hōtaka i kawea tahitia e ōna anō pūtahi a te Karauna; i nui ake ngā utu whakapaitanga whare rīhi i tērā i matapaetia ai, i te nekehanga ki tō mātou tari hou i Maritime House, i Custom House Quay; i whakawhitia ngā utu mō te pae tukutuku me ētahi hōtaka IT hei whakapaunga pūrawa, i huaina rā tēnei i runga ake nei.

17. Ngā whakawhirinakitanga

Karekau he taunahatanga whakawhirinaki i te rā pūrongo (2021–22: \$ karekau).

18. Ngā āhuatanga i pā i muri i te rā pūrongo

Kāore i pā he āhuatanga hirahira i muri i te rā pūrongo.

19. KOWHEORI-19

I āhei ngā kaimahi katoa o Te Taura Whiri i te Reo Māori ki te mahi mai i tō rātou nā kāinga i te aukatinga ā-motu. Nō reira he tātakimōri noa ngā whakararu i pā ki ā rātou kawenga o ia rā. E takea mai ana ngā moni a Te Taura Whiri i te Reo Māori i te Karauna, nō reira kāore he pānga kino ki ngā moni i whiwhi ai mātou i te tau kua pahure.





He mea whakaputa nā:

Te Taura Whiri i te Reo Māori
Pouaka Poutāpeta 411,
Te Whanga-nui-a-Tara 6140
Aotearoa, New Zealand
+64 4 471 0244

info@tetaurawhiri.govt.nz
www.tetaurawhiri.govt.nz

Tohutoro: Te Taura Whiri i te Reo Māori.
(2023). Pūrongo ā-Tau 2022–23.

Kaiarotake:

Silks Audit Chartered
Accountants Ltd
156 Ara o Guyton
Whanganui 4500
Aotearoa New Zealand

Peke:

ASB Business
Papa 15, Corner Jervois Quay
me te Ara o Hunter
Pouaka Poutāpeta 11966
Te Whanga-nui-a-Tara 6011
Aotearoa New Zealand
Waea: +64 4 499 4915

TE TAURA WHIRI I TE REO MĀORI

MĀORI LANGUAGE COMMISSION



tetaurawhiri.govt.nz