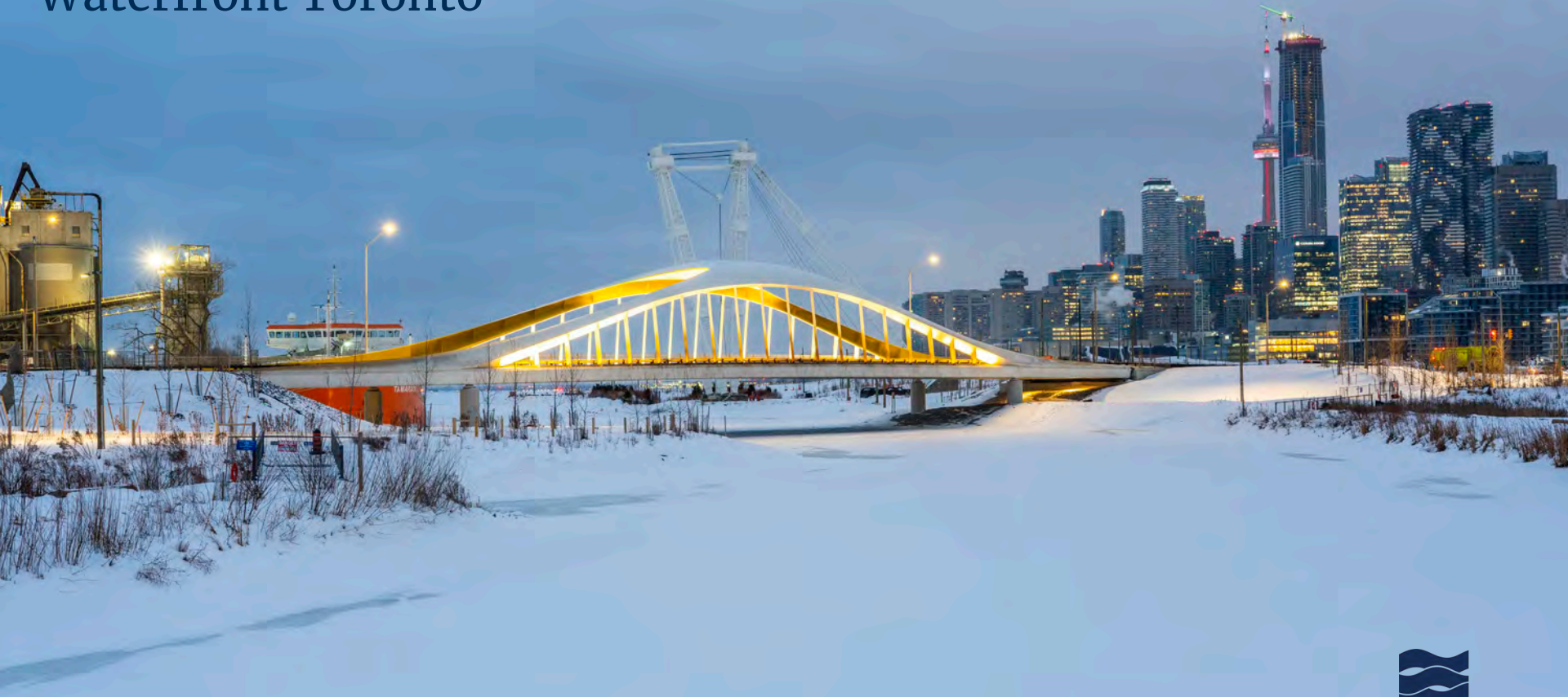


Kevin Greene, Chief Operating Officer Waterfront Toronto



Revitalization vs. Redevelopment

- Reducing urban sprawl
- Increasing affordable housing
- Building sustainable communities
- Creating parks & public spaces
- Expanding public transit
- Driving economic competitiveness
- Advancing reconciliation



25 years ago





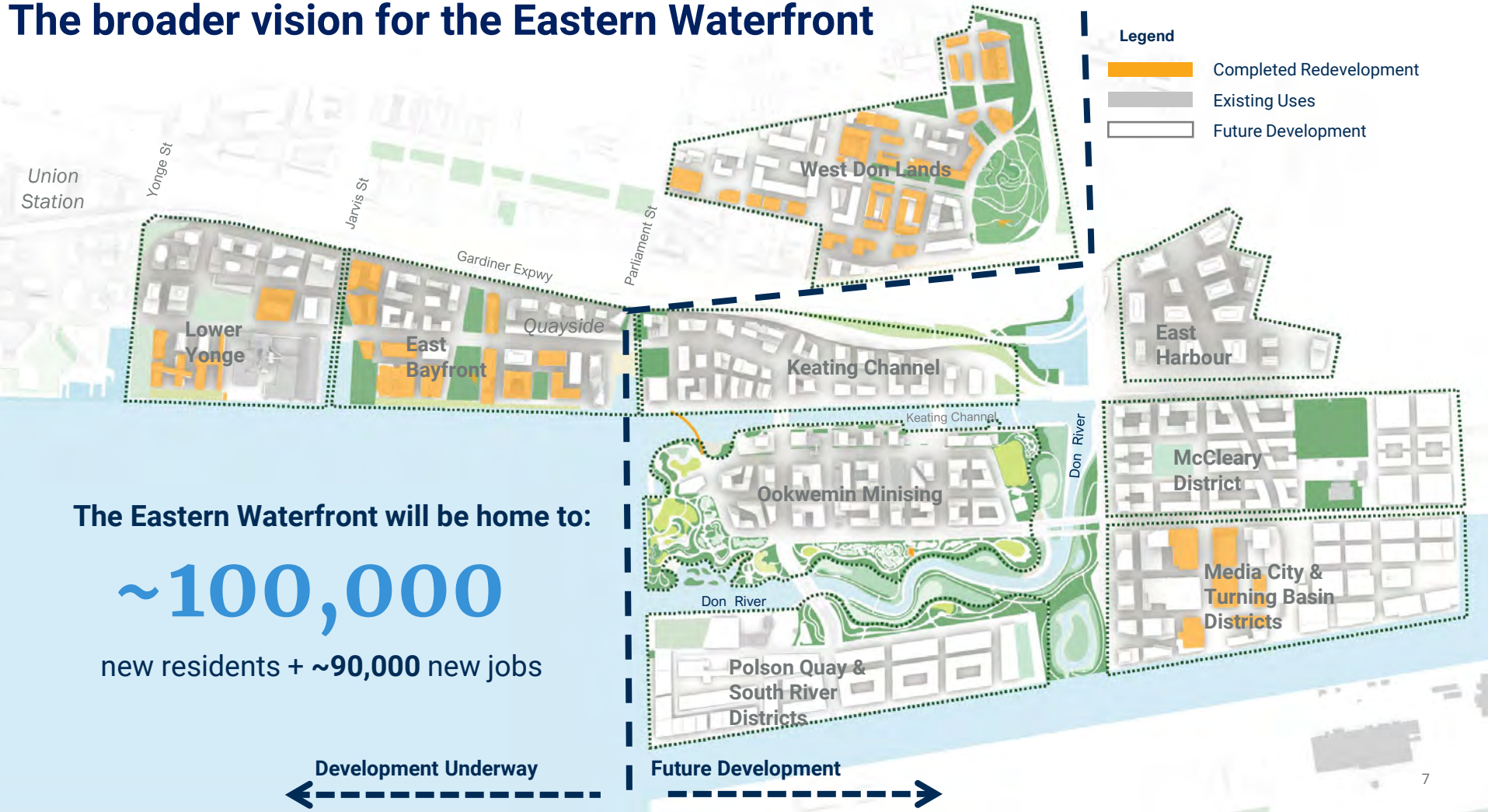
Today



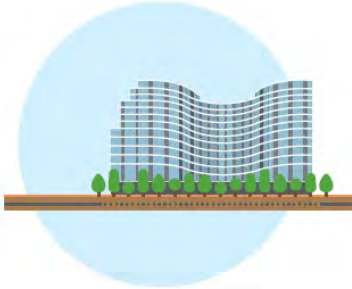


© 2010 The City of San Diego
All rights reserved. No part of this publication may be reproduced without the prior written permission of the City of San Diego.

The broader vision for the Eastern Waterfront



Tri-Government Package



Enabling Infrastructure:
Quayside & Ookwemin Minising

- 9,100 housing units on public land
- Public realm



Waterfront Studies

- World class destinations
- Improved water-based transportation



Biidaasige Park Activation

- Near term arts, culture, sports and recreation



Quayside

Quayside is more than development...

...it is part of a long-term revitalization of the waterfront with ambitious goals to deliver a dynamic, inclusive and resilient community.



Enabled by infrastructure and public realm that will support new homes, connect people to the water, nature and each other



Enabled by infrastructure and public realm that will support new homes, connect people to the water, nature and each other



Leading with ecology



One of Toronto's most significant housing projects...



4
Mixed-Use
Towers



3
Mid-Rise
Buildings



1,129 Market
Rental Units



553
Affordable
Rental Units



1,168
Condominium
Units



3,060m²
Childcare &
Community
Spaces

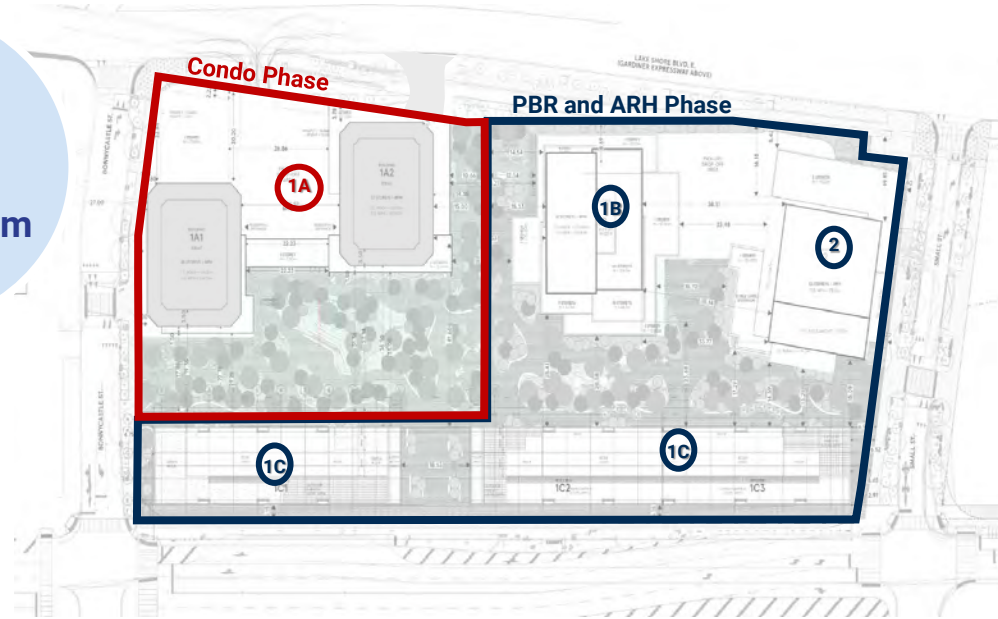


2,231m²
Retail
Space



1.5 acre
Community
Forest
(4,100 m²
POPS)

ARH
57%
2+ bedroom
units



...set to break ground this year

An inclusive and sustainable complete community





Phase 1

Phase 2

Mixed-use development

Silo Park

School Site. + Potential
Cultural Destination

Next Steps



Ookwemin
Minising

Ookwemin Minising

Aspirations for Toronto's new island

Ookwemin Minising aspires to set a new precedent for a **next generation climate positive, resilient development**.

This neighbourhood should be **inclusive, sustainable and walkable, and dense**, with a **diversity of uses** and a strong sense of the area's **natural history**.

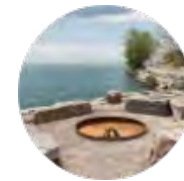
Design Principles



Lead with resilience



Design a distinct identity



Integrate Indigenous perspectives



Create vibrant streetscapes



Integrate sustainable, low-carbon landscapes with infrastructure



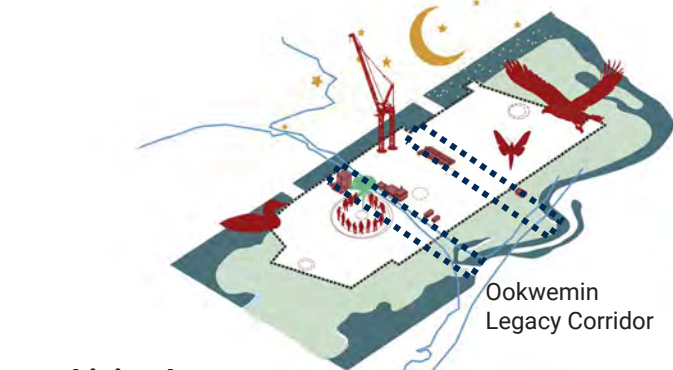
Minimize maintenance costs

The "growing streets" approach

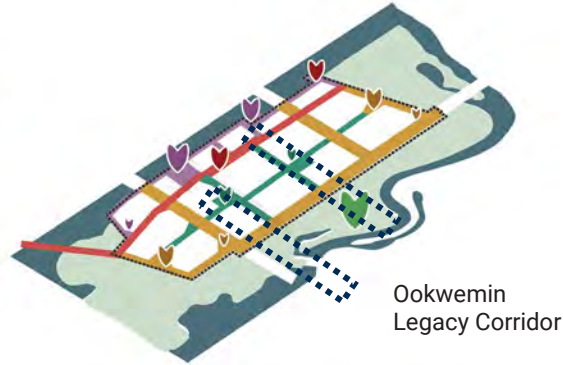
- Incorporating a **nature-based** lens to street design
- Building a **living public realm**
- Imagining **streets as more than just a way to get around** from place to place
- Thinking of **more than just humans**, but the soil, water and living beings that inhabit our shared spaces
- Exploring how streets can **connect water, connect nature and connect the city**



Five landscape-led layers of design



Living Legacy



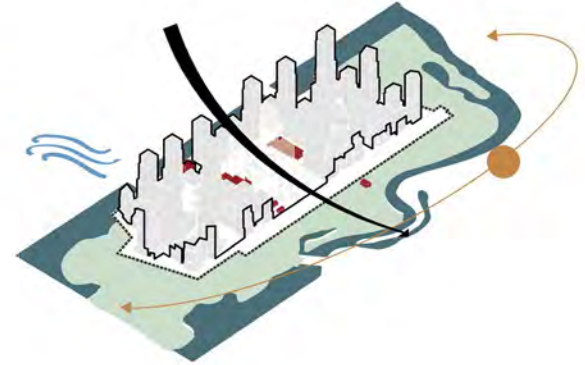
Four Characters



Space for Nature



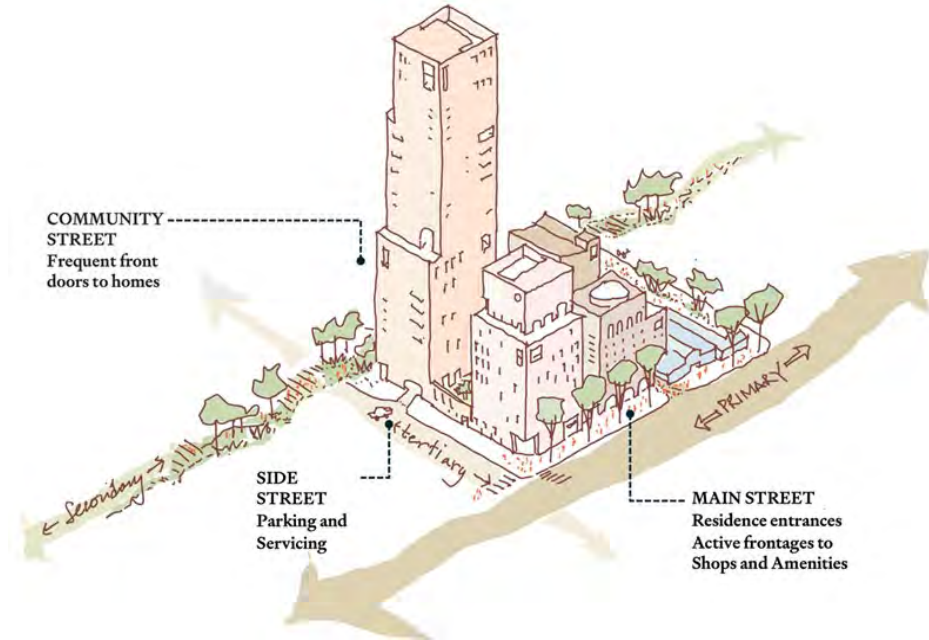
Everyday Mobility



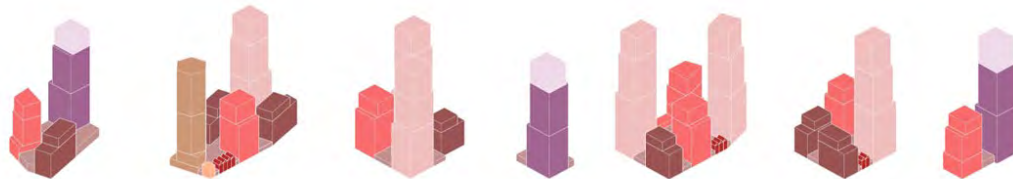
Strategic Density

Strategic density: more housing, better street life

- Spring 2024, City Council approved increased density of **60% above the 2017 Precinct Plan**, a target of **30% affordable**.
- Continuing to explore options to **add density** through a **livable, human scaled neighbourhood**
- At full buildout, Ookwemin Minising will be home to at least **15,000 people**
- A **mix of building types** will help frame the streets in different ways
- Using a variety of building types in an **open block format**
- Integrating **streets** and the **public realm**



CONCEPT VISUALIZATION – does not represent actual design



What's next?



Left: pop-ups in Biidaasige Park last summer
Right: Ookwemin Minising Advisory Network meeting ast October.

Enabling Infrastructure & Streetscape Design

- October 2025: 10% design submission
- July 2026: 30% design

Massing & Built Form

- Early 2026: Report to City Council

Engagement & Consultation

- City of Toronto Port Lands **open house March 10**
- Continued engagement with Ookwemin Minising Advisory Network
- Continued public and Indigenous engagement

Signature park and event space

- A **first-of-its-kind event space** in Toronto for arts and culture, culinary and sporting activations
- An **integrated park space**, connected to the broader Biidaasige Park system with **panoramic views of the Toronto skyline**
- Helping **animate the island** and establish it as a must-visit destination



Creating a vibrant waterfront year-round



... Starting NOW on our new island – early activation

This summer:

Remaining 10 acres of Biidaasige Park open,
along with Lasseonde Art Trail

Next 10 years:

Early activation accelerates the activation of
the parks and supports early phases of
development.

- Provides needed arts, culture, sports/
recreation and events infrastructure





Waterfront Studies

Waterfront Destination Strategy

Why now?

- Waterfront Toronto's mandate is to enhance the economic, social and cultural value of the waterfront
- Government partners have identified destinations and attractions as a priority objective
- Port Lands Flood Protection has unlocked a key area of the waterfront to support world class destinations and attractions

What the strategy will deliver

- **Strategic Direction:** Establish a clear and evidenced-based overarching vision for destinations along the waterfront steered by Guiding Principles
- **Opportunity Identification:** Highlight specific opportunity sites and potential attraction types that align with the broader waterfront vision and will contribute to impactful development
- **Implementation Focus:** Provide a phased and actionable roadmap for realizing destination opportunities, ensuring alignment with delivery partners, stakeholder priorities, and community input.



Marine Use Strategy

A strategy for creating a harbour that's safe, productive and fun

- Enhancing physical infrastructure on the shoreline
- Exploring new transportation services
- Exploring new policies and coordination tools aimed at enabling diverse uses while maintaining a healthy lake

The strategy has led to concrete work, including:

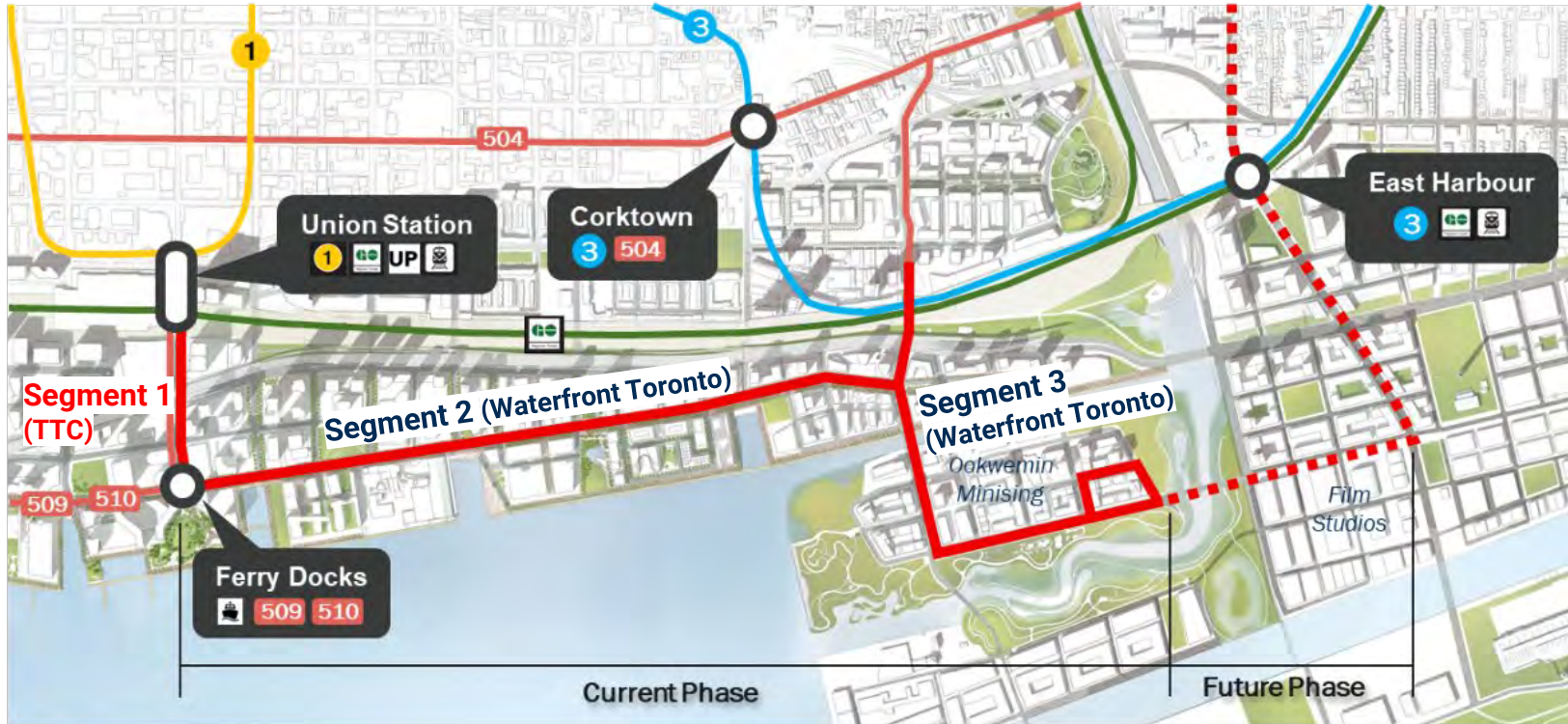
- Establishing the Marine Coordination Committee
- Exploring new ways to travel with a Kiss N' Sail pilot
- Completed a Seabus Feasibility study for new water-based transit options
- Introducing an East-West Water Shuttle pilot to test the feasibility and passenger demand for water-based transit across the Inner Harbour







Waterfront East Transit

Connecting the waterfront – Waterfront East Transit



-  Waterfront East Transit Route
-  Intermodal Links

Project status



Environment Approvals

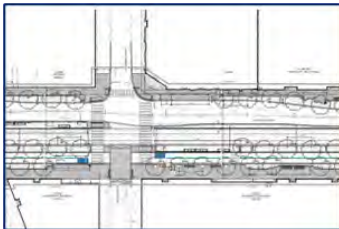
The Transit and Rail Project Assessment Process was finalized and MECP review is completed, covering the western portion of the project.

Eastern components are approved through the Lower Don Lands EA Master Plan Addendum and Environmental Study Report.



Design Review Panel

The project completed detailed design review for all components of Segment 2 and 3, and received Design Review Panel support for all components necessary to begin work on the project.



Detailed Design

The 60% Detailed Design milestone has been achieved for Segments 2 and 3 of the project. All works are ready to advance to tender pending funding availability.



a waterfront for everyone

