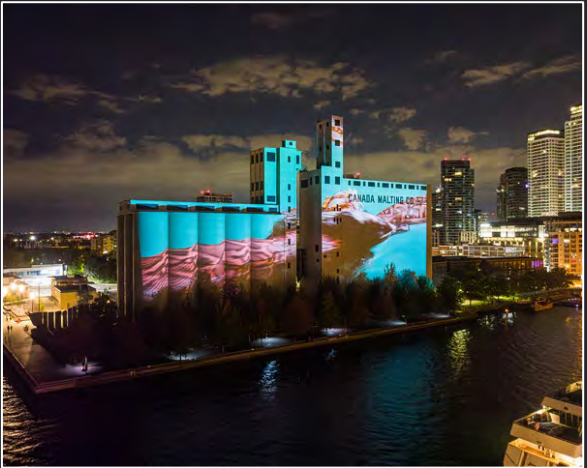
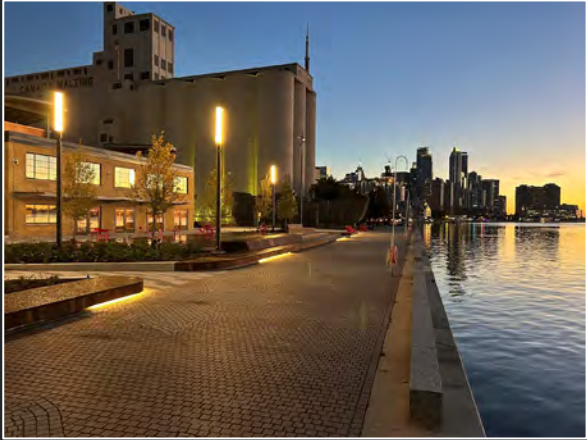


# Let's begin by checking in on Bathurst Quay.



Be sure to visit The Corleck – opening this Spring!



# CreateTO: Working on Toronto and Toronto's Waterfront

**CREATE TO**

Transforming  
Toronto's Real Estate

# CreateTO supports Toronto's City- wide real estate service delivery model

---

- A local board established by City Council in 2017 under the [City of Toronto Act](#)
- Provides the City with centralized real estate governance and oversight, streamlining strategic planning and decision-making for real estate matters
- CreateTO takes underutilized City land, creates a vision for the properties, and moves them through the planning process to enable the delivery of affordable housing or new/expanded City programs
- Includes the operational consolidation of Build Toronto Inc. and Toronto Port Lands Company (legally the Toronto Economic Development Corporation); both are City corporations established under the *City of Toronto Act*
- Employs ~90 staff

# Our Work: Three Core Lines of Business

---

## Real Estate Solutions for DACs

CreateTO works with the City of Toronto's 68 divisions, agencies and corporations to develop real estate solutions that meet program needs with the goal of optimizing the use of each site, while also delivering on urgent Council-directed policy priorities.



## Housing

CreateTO works collaboratively with our City partners to advance City Council's vision to urgently build more affordable housing on City-owned lands and identifies real estate opportunities designed to meet the vital housing needs of Torontonians.



## Port Lands

From affordable housing to new parks, trails and industrial/commercial uses, CreateTO is making sure this unique downtown district delivers maximum value for the people of Toronto.



# How did the City of Toronto become the majority landowner in the Port Lands?

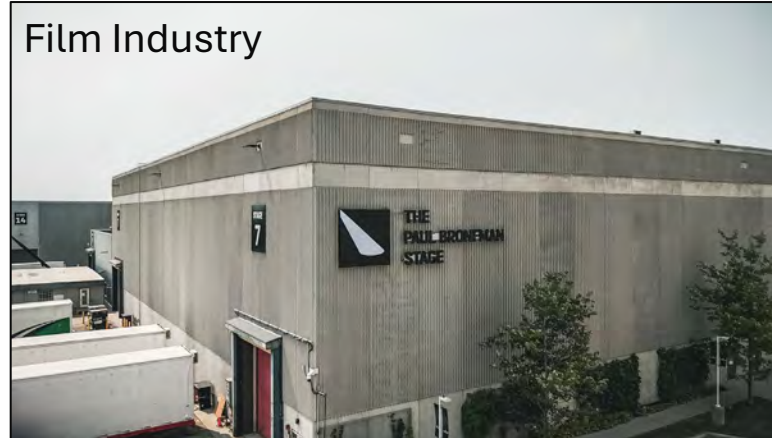
- 1911: **Toronto Harbourfront Commission incorporated.**
- 1911 – 1950: Port Lands and Inner Harbour lakefill.
- 1980's: Hearn closes. Imperial Oil departs.
- 1986: TEDCO incorporated.
- 1989 – 1992: **Royal Commission on the Future of the Toronto Waterfront.**
- 1995 - 2003: **Ownership transfer to TEDCO. Structured Settlement Agreement.**
- 1999: Toronto Port Authority Incorporated.
- 2001: TWRC incorporated.
- 2009: TEDCO re-brand to Toronto Port Lands Company + Build Toronto.
- 2017: Port Lands Planning Framework approved.
- 2018: Port Lands Flood Protection breaks ground.
- 2018: **CreateTO established. Manages TPLC assets through service agreement.**



# What does CreateTO do in the Port Lands?

- **Leasing, property management and interim activation services.**
- Real estate support for the WaterfrontToronto-led Port Lands Flood Protection project.
- New development and public realm projects with a focus on economic development objectives.
- Future neighbourhood and district planning.
- Major capital projects within the Port Lands and along the central waterfront.

Film Industry



Maritime & Industrial Uses



Activation



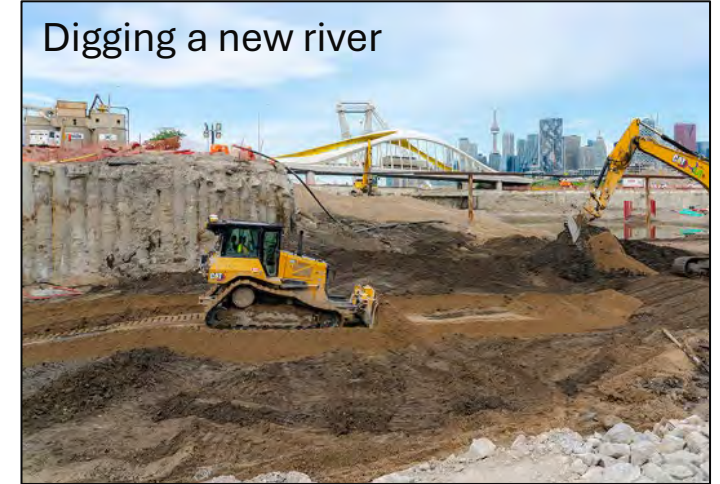
# What does CreateTO do in the Port Lands?

- Leasing, property management and interim activation services.
- **Real estate support for the WaterfrontToronto-led Port Lands Flood Protection project.**
- New development and public realm projects with a focus on economic development objectives.
- Future neighbourhood and district planning.
- Major capital projects within the Port Lands and along the central waterfront.

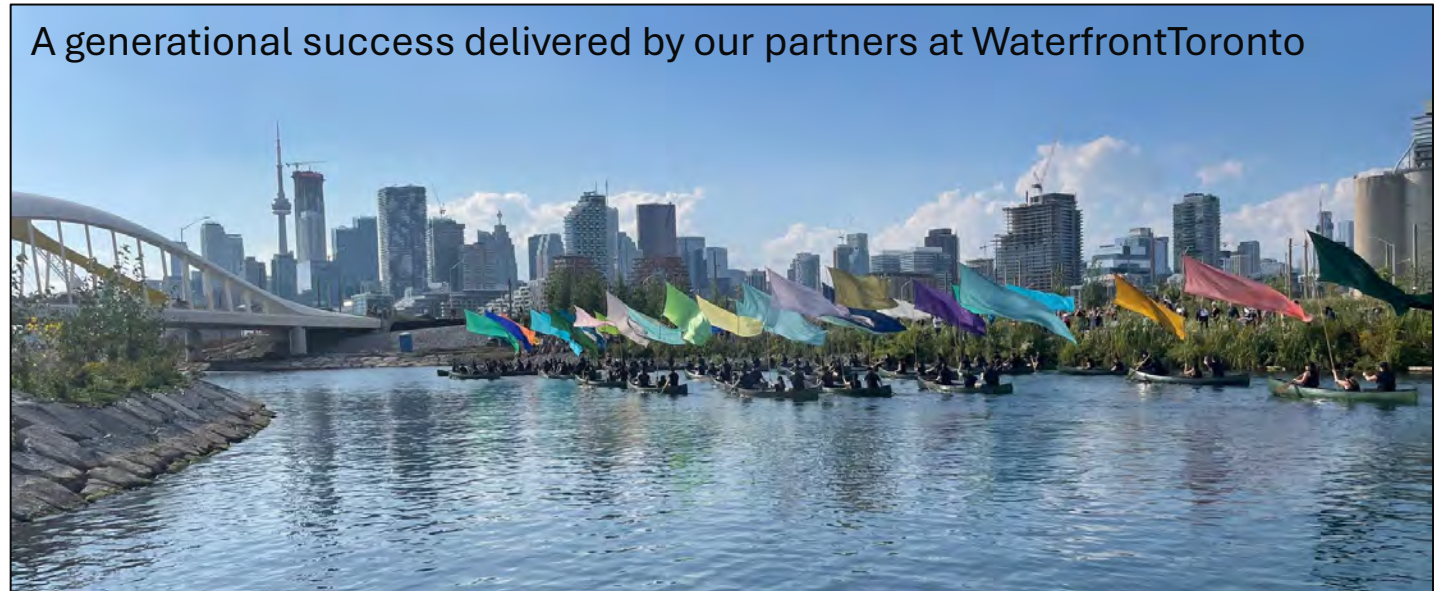
Legacy uses



Digging a new river



A generational success delivered by our partners at WaterfrontToronto



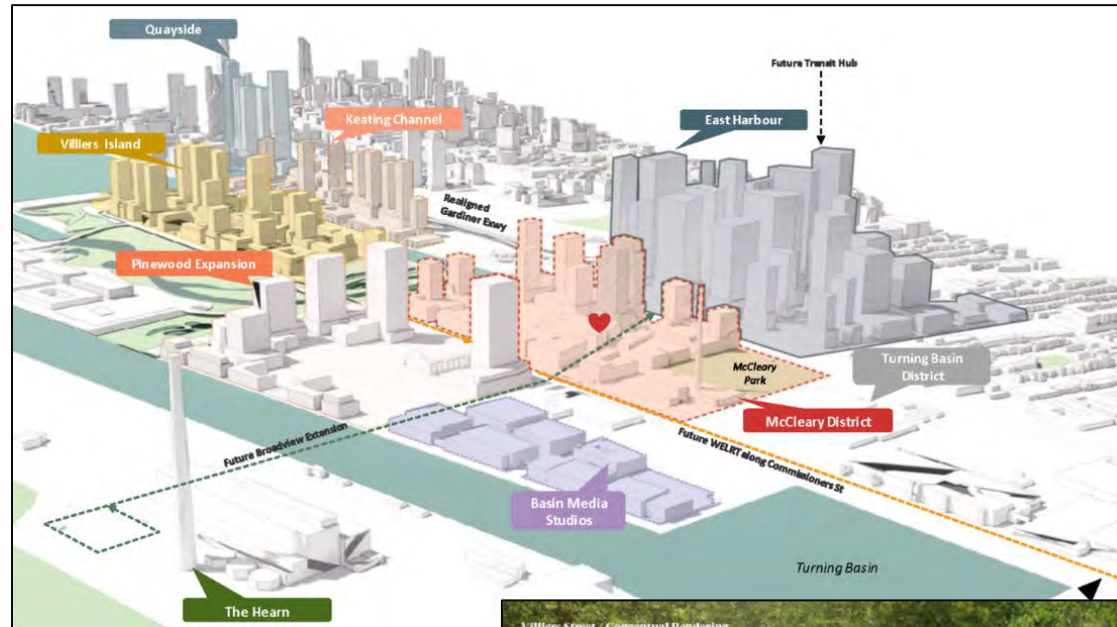
# What does CreateTO do in the Port Lands?

- Leasing, property management and interim activation services.
- Real estate support for the WaterfrontToronto-led Port Lands Flood Protection project.
- **New development and public realm projects with a focus on economic development objectives.**
- Future neighbourhood and district planning.
- Major capital projects within the Port Lands and along the central waterfront.



# What does CreateTO do in the Port Lands?

- Leasing, property management and interim activation services.
- Real estate support for the WaterfrontToronto-led Port Lands Flood Protection project.
- New development and public realm projects with a focus on economic development objectives.
- **Future neighbourhood and district planning.**
- Major capital projects within the Port Lands and along the central waterfront.



McCleary District Framework Plan



# What does CreateTO do in the Port Lands?

- Leasing, property management and interim activation services.
- Real estate support for the WaterfrontToronto-led Port Lands Flood Protection project.
- New development and public realm projects with a focus on economic development objectives.
- Future neighbourhood and district planning.
- **Major capital projects within the Port Lands and along the central waterfront.**



# Staying connected.

---

- March 4: City's new Waterfront Secretariat Director, Annely Zonena, joins City Planning.
- March 10: Port Lands Flood Protection Project Update Report at Executive Committee.
- March 10: Port Lands Public Open House. 6pm at Ralph Thornton Community Centre.
- April 14: McCleary District Framework Plan Update Report at Planning & Housing Committee.
- May 12: Dockwalls Update Report at Executive Committee.
- May 23 & 24: Doors Open: Toronto Hydro building at 25 Ookwemin Street.
- Early June: Completion of Amsterdam Bridge Rehabilitation.



**Thank you.**

**Bryan Bowen  
Director, Port Lands Asset Management**

**bbowen@createto.ca  
437-873-6260**

**CREATE TO**

Transforming  
Toronto's Real Estate