

Toronto and Region Conservation Authority

Update on Waterfront Projects & Partnerships

Presented by:
Johanna Kyte, Senior Manager, Waterfront,
Government & Community Relations

February 24, 2026



An aerial black and white photograph showing a residential area completely inundated with floodwater. Numerous houses and trees are visible, with the water reaching up to the roofs of some buildings. The scene depicts the aftermath of a major disaster.

72 years ago, Hurricane Hazel transformed the region's approach to planning . . .

to protect people and property through respect for natural systems

Supporting Government & Partners

Since 1957, TRCA has been delivering programs and services that enhance the natural environment and protect communities from the impacts of flooding and extreme weather events — Ontario’s leading cause of public emergencies. TRCA uses a data-driven approach to support governments and partners in planning decisions, asset management, infrastructure delivery, and stewardship.

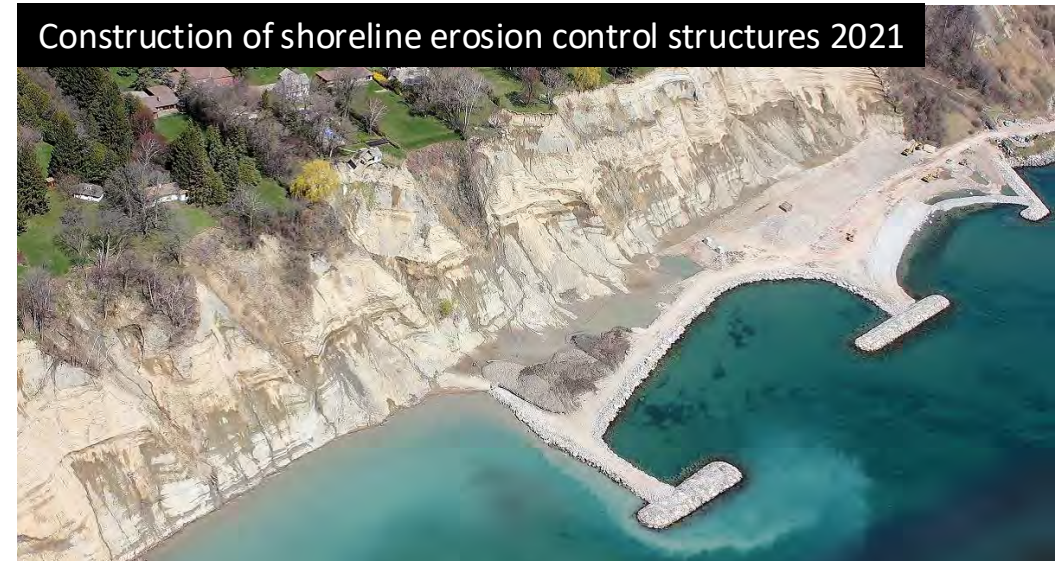
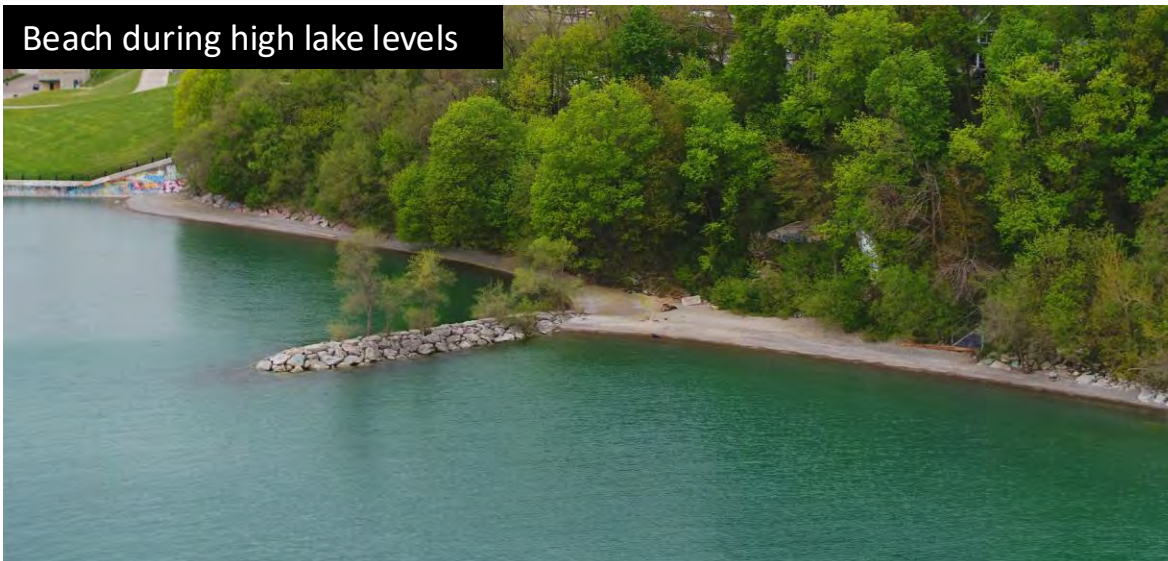


TRCA Role on the Waterfront and along Rivers

TRCA is responsible for mitigating flood and erosion risks along the shoreline in rivers. These risks are primarily impacted by lake levels, storm activity causing run-off, heavy wave action, and precipitation.

TRCA is responsible for:

- Monitoring forecasts/lake conditions and providing warnings to the City who carries out emergency response
- Identifying and monitoring potential shoreline and valley hazards and strategies to mitigate them
- Reviewing development in relation to shoreline and valley risks and hazards
- Managing and maintaining TRCA shoreline and valley infrastructure
- Supporting the City in delivering projects that mitigate risk and provide opportunities to improve safe access and ecological features



Riverine and Shoreline Flooding vs Urban Flooding

Conservation Authorities are responsible for mitigating flood risks which happen when water overtops banks.

Municipalities are responsible for urban flooding caused by overflowing of stormwater systems which leads to issues like street and basement flooding.



Riverine Flooding



Urban Flooding

TRCA Lake Ontario Waterfront

Project Site Key Map



- | | | | | | |
|-----------------------------------|--------------------------|---------------------------|-----------------------------------|--|-------------------------------------|
| 1 Jim Tovey Lakeview (CVC) | 5 Humber Bay Park | 9 Toronto Islands | 13 Tommy Thompson Park | 17 Scarborough Bluffs West EA | 23 West of Highland Creek |
| 2 Colonel Sam Smith Park | 6 Western Beaches | 10 Parliament Slip | 14 Leslie Street Spit | 18 Brimley Road Multi-Use Trail | 24 Rouge Beach |
| 3 Cliff Lumsdon Park | 7 Ontario Place | 11 Port Lands | 15 Ashbridges Bay Landform | 19 Bluffers Park | 25 Petticoat Creek CA |
| 4 Prince of Wales Park | 8 Inner Harbour | 12 North Shore | 16 Ashbridges Bay Park | 20 SWP EA – West Segment | 26 West Shore Blvd Trail Gap |
| | | | | 21 SWP EA – Central Segment | 27 Frenchman’s Bay |
| | | | | 22 SWP EA – East Segment | 28 Duffins Marsh |
| | | | | | 29 Ajax Waterfront EA |

Shoreline Flood & Erosion Risk Management

Many of Toronto's Shoreline structures built in the 1960/70's and nearing end of life. High lake levels and major storms have further impact shorelines and place parks at risk. TRCA has a 10-year program with federal funding to do shoreline construction at sites across the waterfront. Work will repair the shoreline and protect waterfront parks and infrastructure from erosion due to wave action.

Construction is underway at the following parks:

Colonel Sam Smith Park: Q4 2024 – Q4 2027

Humber Bay Park West: Q1 2026 – Q1 2028

Port Union Waterfront Park: Q2 2026 – Q4 2026

Bluffers Park PH4 : Q4 2024 – Q4 2025

Ashbridges Bay Park East Headland: Q1 2026 – Q1 2028

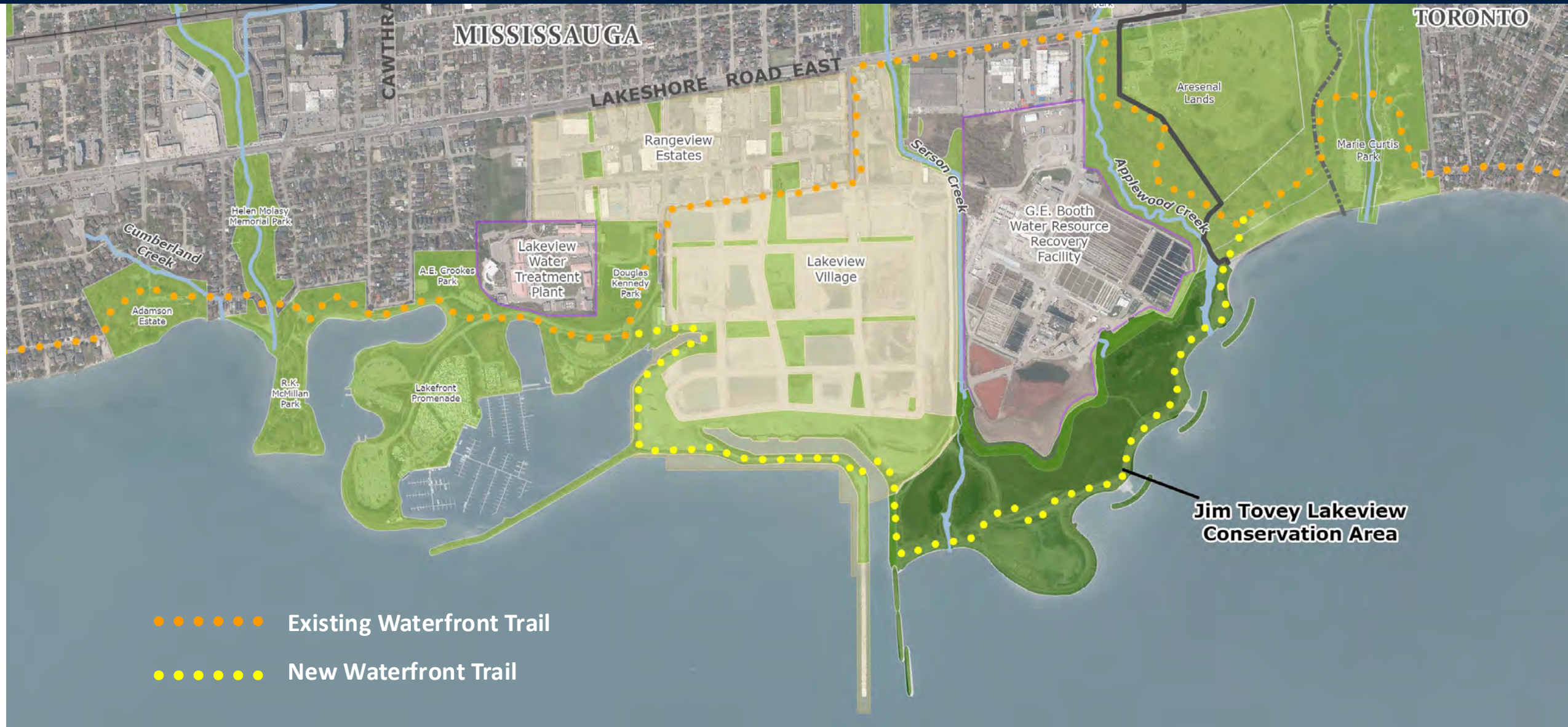


Jim Tovey Lakeview Conservation Area

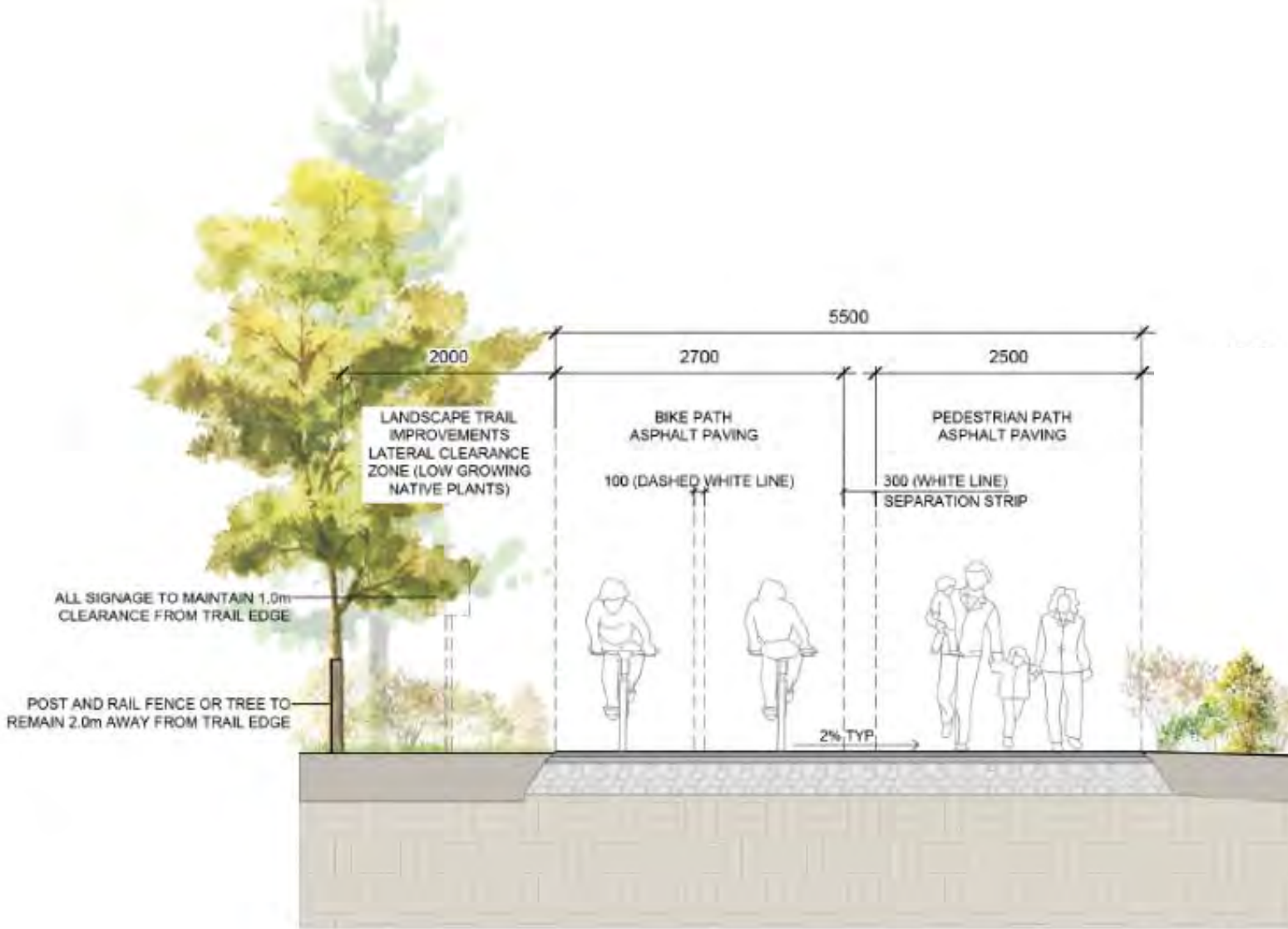


Landscape Creation, October 2025

Jim Tovey Lakeview Conservation Area Overview



1.9 kilometres of new Waterfront Trail



Section



Opening Spring 2026

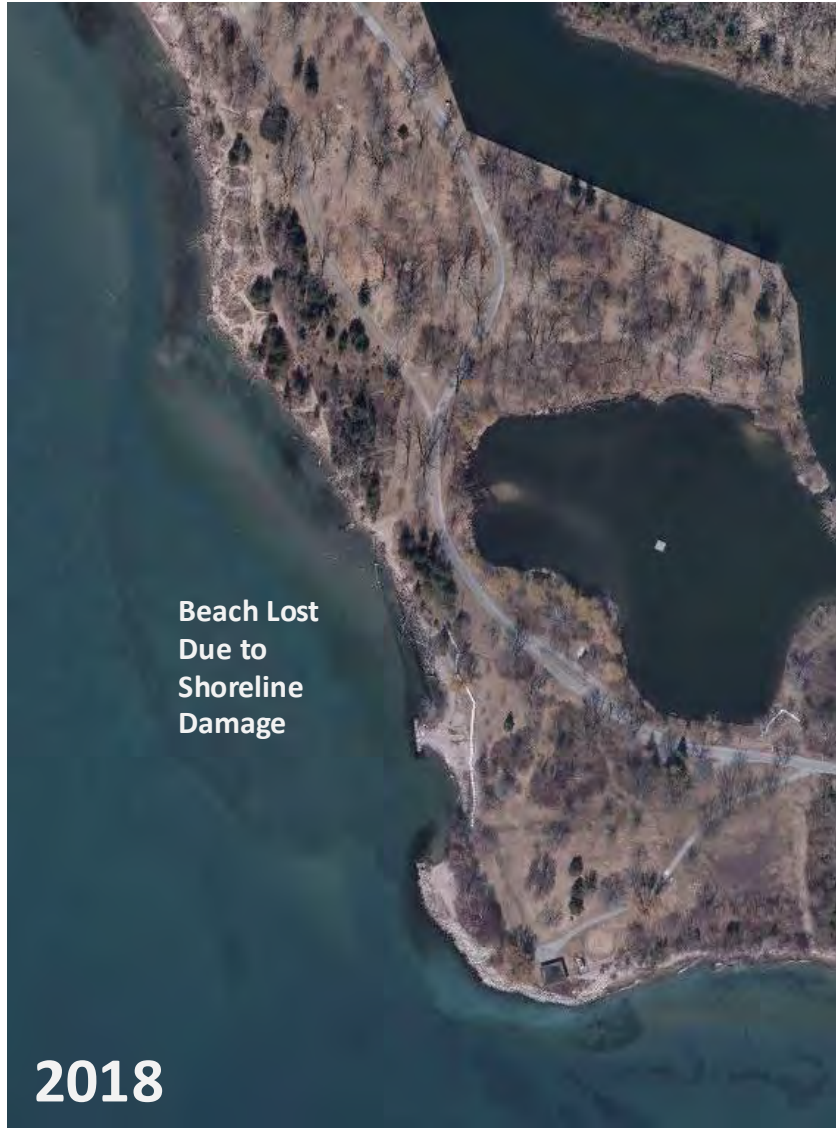


Toronto Island Flood Mitigation & Erosion Control

The Environmental Study Report has been completed and submitted to the province



9 Gibraltar Point & Hanlan's Beach Restoration



TRCA has begun work on a coastal assessment for the next stage of work on Hanlan's Beach

Biidaasige Park & Ookwemin Minising

2025 Park and River Opening

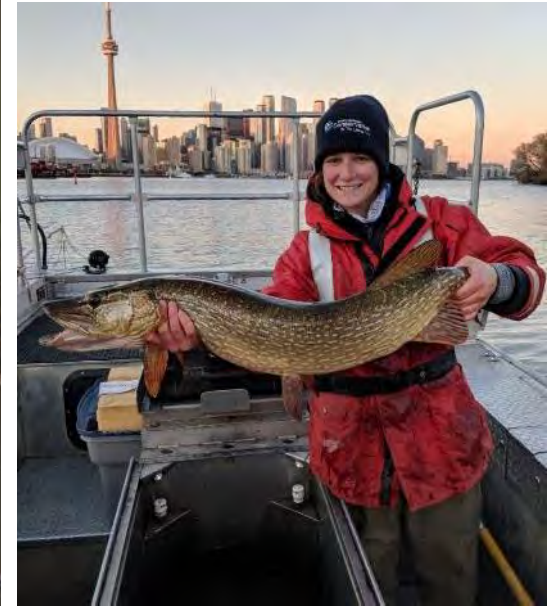
- TRCA supporting City with ongoing monitoring and management of the River Valley
- Activities include monitoring, ecosystem and wildlife management



11

Biidaasige Park & Ookwemin Minising

Significant increase in fish species diversity surveyed in the newly opened river and coves

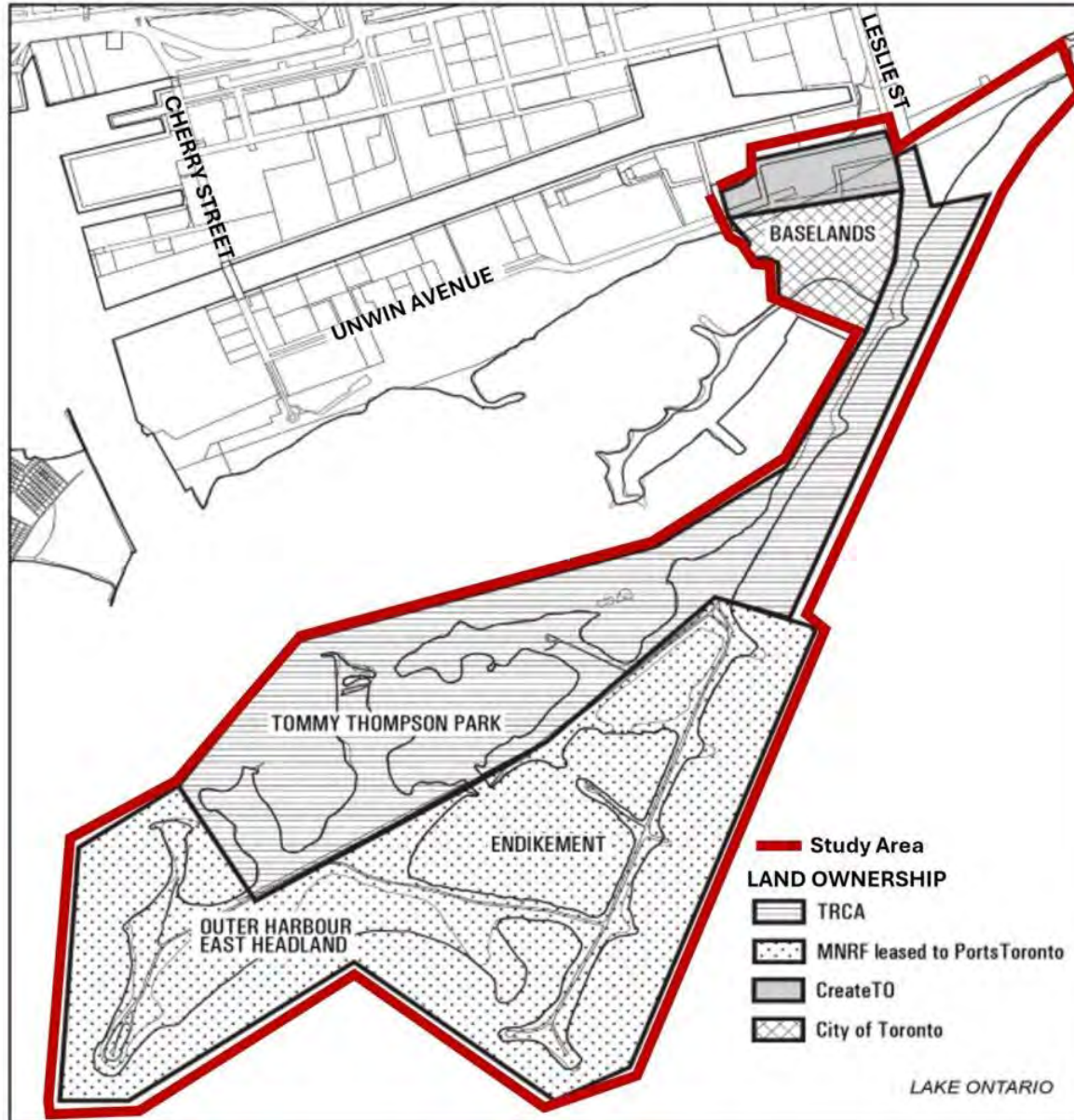


1 Tommy Thompson Park Success

After significant investment in restoration, infrastructure, and education, the park now has over 300,000 visitors a year. It is a popular destination for walking, running, cycling, bird watching, fishing, and viewing the Toronto skyline.



Tommy Thompson Park Visitor Experience Plan (TTP VEP)



TRCA and the City of Toronto are doing a Visitor Experience Plan (VEP) study at TTP.

The VEP will identify and prioritize operational and physical changes to the park to manage a growing number of visitors to the park, improve the user experience, reduce conflicts, and protect natural habitats.

- Spring 2026: Engagement Round 1

For more information see:

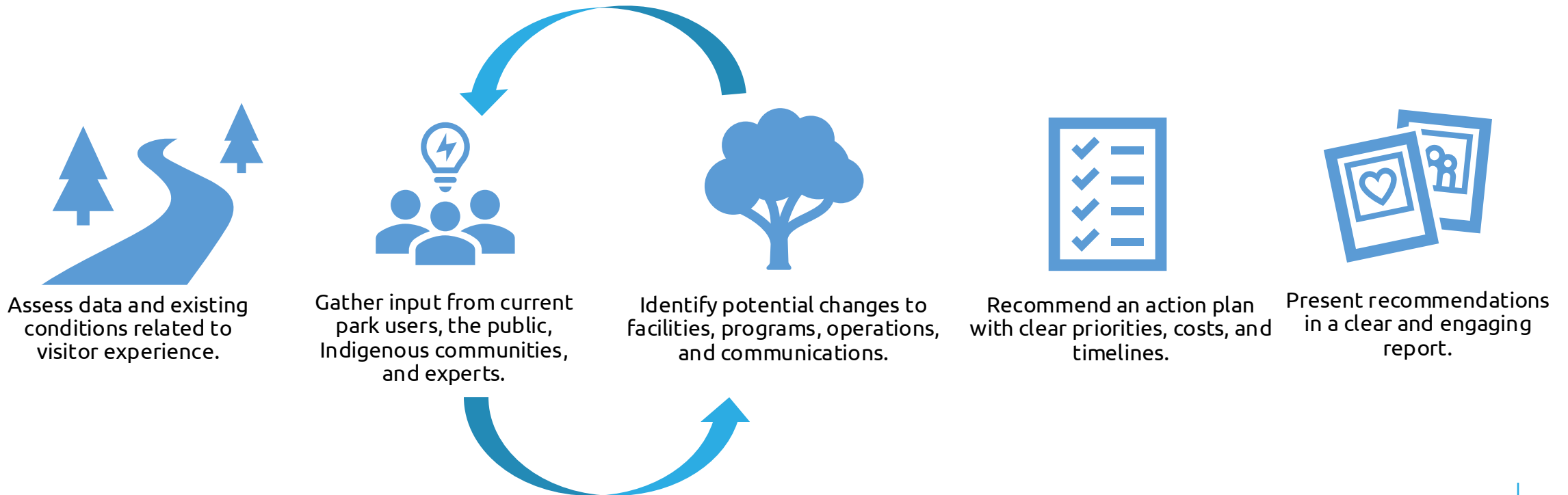
<https://tommythompsonpark.ca/visitor-experience-plan/>

VEP - Project Scope

Toronto and Region Conservation Authority (TRCA) and the City of Toronto are jointly undertaking a study to identify and prioritize changes to park policies, operations, and infrastructure to improve user experience at the park with a focus on protecting and enhancing the natural environment. **Please see City Council directions from IE22.5, from 2021.**

The Tommy Thompson Park Masterplan's 4 key objectives will guide the VEP:

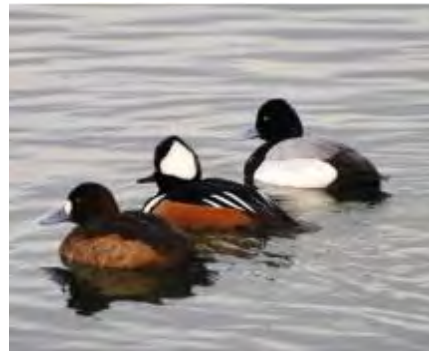
- Preserve significant species
- Protect environmentally significant areas
- Enhance aquatic and terrestrial habitat
- Enhance public recreational opportunities



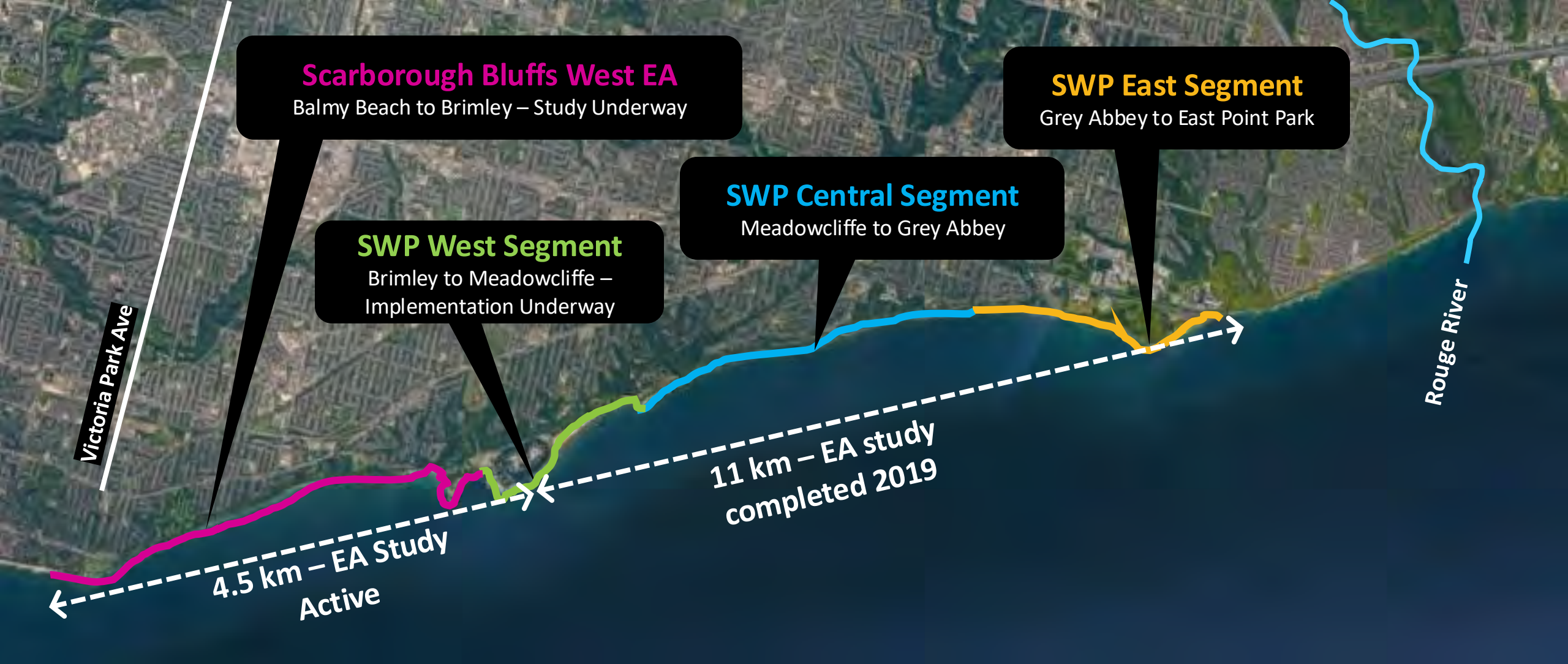
Wetland Development & Restoration



*The park is a **Key Biodiversity Area** and an **Environmentally Significant Area**. TRCA, the City of Toronto, and Ports Toronto have worked to create a biodiversity hotspot that is habitat for **species at risk** like Monarch butterfly and Blanding's Turtle.*



Overview of Scarborough Waterfront Projects



Scarborough Bluffs West Project EA

- Study being completed in partnership with the City of Toronto
- Study Area: 4.5km from Silver Birch Avenue to Brimley Road
- Terms of Reference (Phase 1) is complete, with Ministry approval received in October 2025. Environmental Assessment (Phase 2) was initiated in November 2025. This phase will see the development and evaluation of alternative shoreline solutions.



17 Scarborough Bluffs West Project - Timeline

2023-2025 | Phase 1: Terms of Reference (Approved Oct 1)

Develop a workplan to outline how we will undertake the Environmental Assessment

we are
here

2025+ | Phase 2: Environmental Assessment

Identify, evaluate, and recommend Alternative Solutions (design concepts)
Engagement planned to commence Spring 2026

Post EA | Phase 3: Design & Construction

Subject to Ministry approval of the EA, and subsequent Council approval and funding

Scarborough Waterfront Project IEA



Existing (looking north)



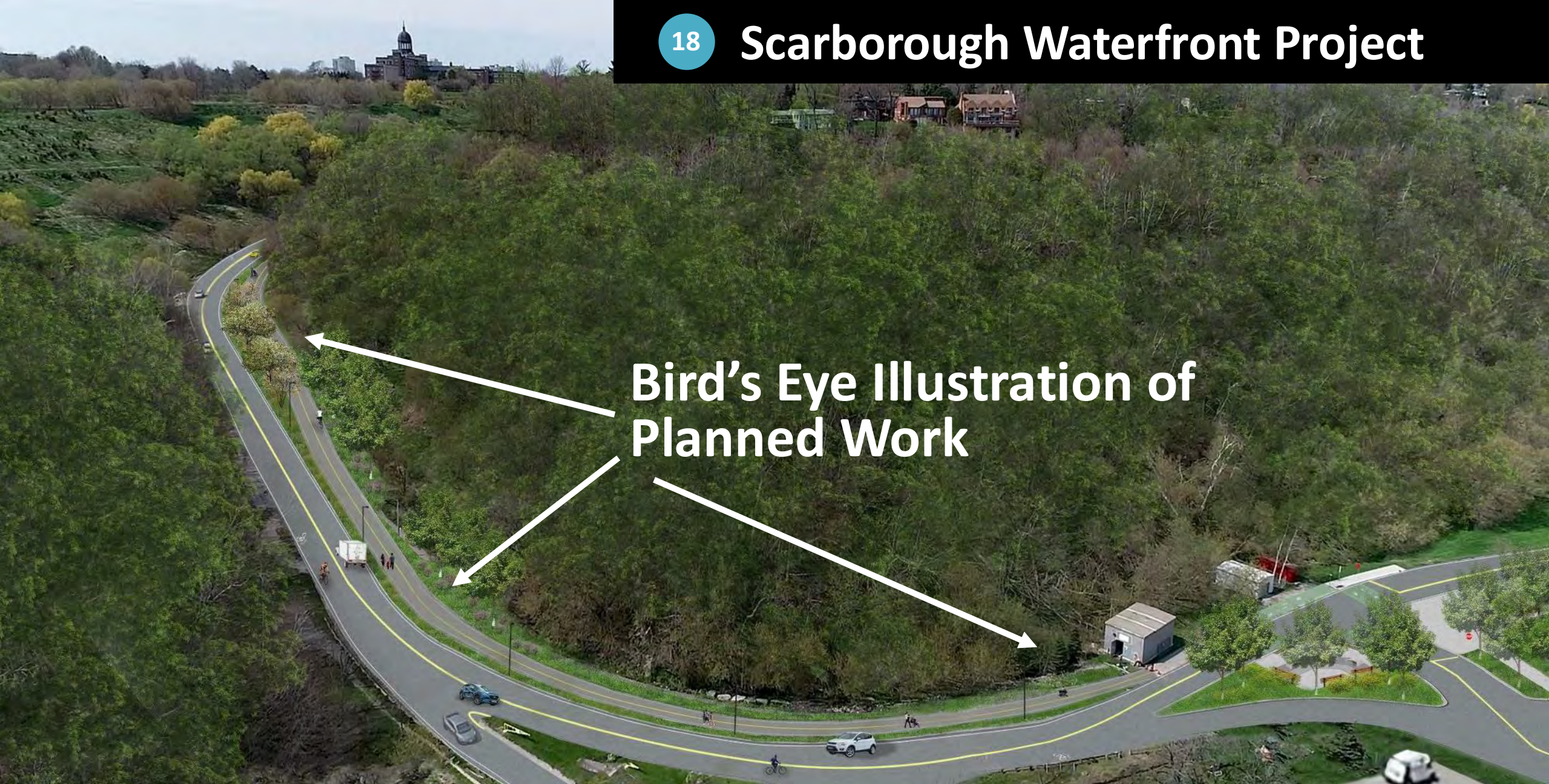
Planned



18

Brimley Road South Multi-Use Trail

- Separated MUT with level rest areas
- Improved pedestrian and cyclist access and safety
- Accommodations to a variety of users
- Paved and lit trail for all season use
- Construction initiated in Fall 2025, with anticipated completion in mid-2027



**Bird's Eye Illustration of
Planned Work**

Brimley Road South Multi-Use Trail

Multi-use trail on east side of Brimley Road South

Reduced need for dredging

MUT connection to Central Segment

Sand dune expansion

Interim groyne

Expanded headland with open space

Expanded headland with seating areas

West Segment | Bluffer's Park to Meadowcliffe



West Segment | Shoreline Multi-Use Trail

Western Lake Ontario Land to Lake Initiative

A partnerships of 7 conservation authorities and 8 municipalities to advance land-based actions that improve water quality and ecosystem health in Western Lake Ontario. TRCA received \$183k through GLFEI to advance a regional approach to coastal resilience.



TRCA Contributions:



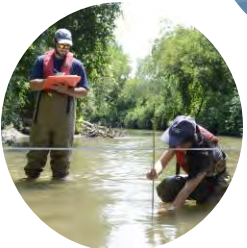
Restoration & infrastructure projects to advance delisting of Areas of Concern (AOCs)



Active in development and delivery of the Lake-wide Action & Management Plan (LAMP)



Participation Binational task team to address nutrients



Monitoring and research to improve fish and habitat knowledge

TRCA's Continuing Priorities

- Support our partners with science, data, and expertise to advance sustainable planning decisions
- Facilitating collaboration with a diverse set of partners and stakeholders
- Exploring & pursuing funding opportunities with municipalities and partners to advance projects of common interest
- Leverage opportunities to create resiliency and public recreation opportunities



Questions

contact:

Johanna Kyte

Senior Manager, Waterfront, Government and Community Relations

Johanna.Kyte@trca.ca

www.trca.ca

