

# TAKE ACTION NOW

Tell Doug Ford Now is the Time to Keep his July 2020 Promise to Miltonians.

"I am not in favour of (the Campbellville quarry). I believe in governing for the people. And when the people don't want something you don't do it. It's very simple. We are going to make sure it doesn't happen one way or another".

#### Contact Premier Ford:

416-745-2859 • [doug.fordco@pc.ola.org](mailto:doug.fordco@pc.ola.org)

#### Contact Milton's PC Candidate Zeeshan Hamid

[zee@zeehamid.com](mailto:zee@zeehamid.com)

Find out more at

**ACTIONMilton.ca**

#### Join ACTION Milton

- Sign up for the newsletter
- Order a lawn sign
- Make a donation

 Action-Milton

 action\_milton



Quarry blasting could send **contaminants** through the groundwater, and into the drinking water supplies of residents in Campbellville and parts of Milton

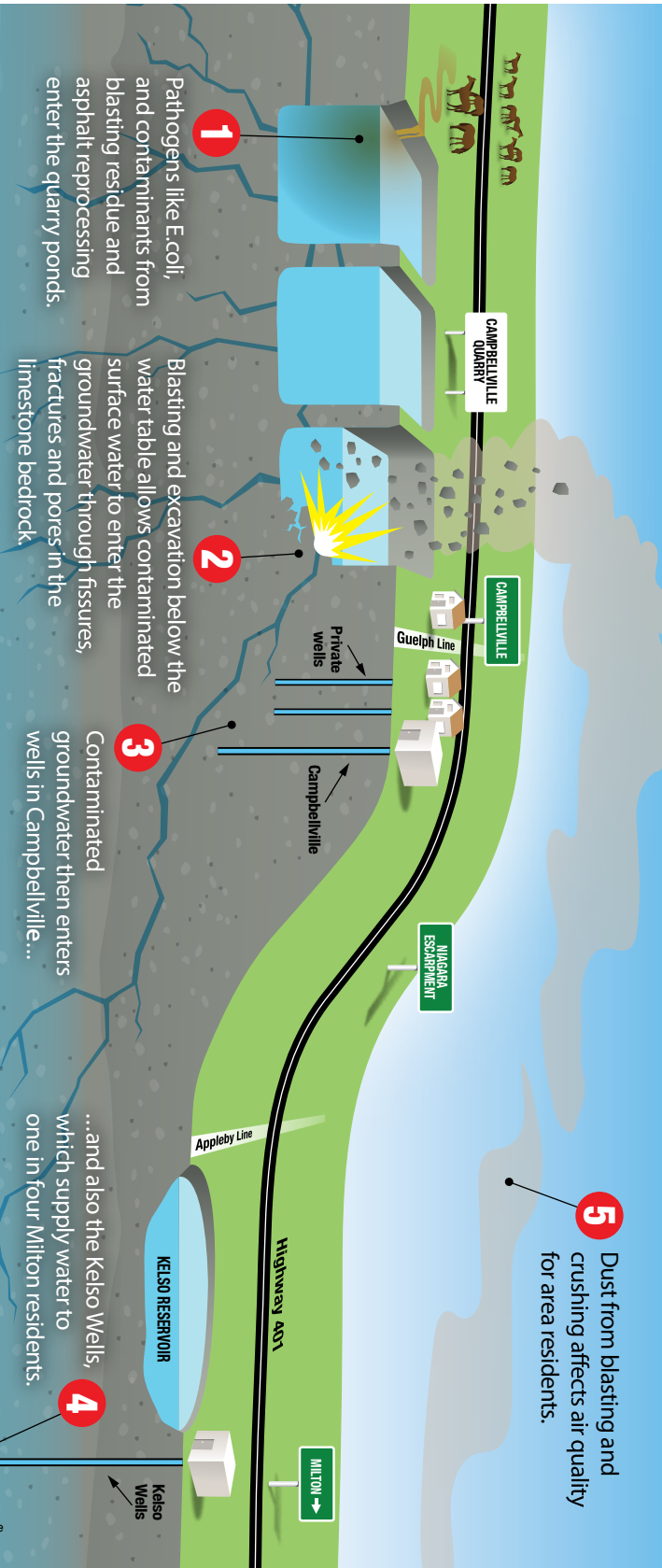


Illustration: Tony Biddle

# SAVE MILTON'S TAP WATER **STOP!**

**Campbellville  
QUARRY**

**Tell Doug Ford**

**NOW is the TIME to KEEP his PROMISE and STOP the proposed CAMPBELLVILLE QUARRY**

Proposed Campbellville Site Today



Stop Campbellville Oasis Becoming THIS!

**ACTIONMilton.ca Meeting**

Show Premier Ford how much we care!

**Wed. March 27, 7:00 pm**

Country Heritage Park , 8560 Tremaine Rd



# THE PROPOSED CAMPBELLVILLE QUARRY PUTS YOUR DRINKING WATER AT RISK!



## AND IT'S NOT JUST DRINKING WATER

In addition to the risk to drinking water for Milton residents and community and private wells in Campbellville, quarry operations can affect air quality, produce flying rock and create traffic hazards, while producing little financial benefit to Milton.

### Air Quality



Dust from drilling, and crushing, and stockpiling aggregate, & emissions from asphalt re-processing will pollute the air. Fine particulate matter (PM 2.5) can affect your health (asthma, respiratory disease, cancer, heart attacks), and even lead to premature death. Particulate matter, carried on prevailing winds from the Campbellville Quarry, can affect the air we breathe in Milton.

James Dick Construction Ltd.'s (JDCL) request for an aggregate licence, underwater blasting, & construction of an asphalt re-processing plant could threaten the quality of the water Campbellville and many Milton residents drink, and the air we all breathe.

**PREMIER DOUG FORD MUST KEEP HIS PROMISE AND STOP THE PROPOSED CAMPBELLVILLE QUARRY BEFORE THE BY-ELECTION VOTE**

25,000 people rely on the Kelso Wellfield for their drinking water. The proposed Campbellville quarry is located in the area that supplies water to Milton's Kelso wells and Campbellville.

Blasting can create pathways which could transport contaminants from the Campbellville quarry area into the groundwater which flows to Campbellville and Milton.

Toxic chemicals or pathogens in groundwater may be costly or impossible to treat or remove. Contaminants could include:

- Nitrates and other residue from explosive blasting
- Chemicals from asphalt reprocessing on site
- Fuel from spills on-site, the CP Rail Line or Highway 401
- Bacteria from farms, fields and septic systems

**ACTIONMilton.ca Meeting**  
Representatives from all 4 Provincial Parties  
Invited, plus members of Town Council

Wed. Mar.27, 7:00 pm Country Heritage pk. 8560 Tremaine Rd

### Traffic



Heavy truck traffic on local roads and Highway 401 will increase congestion, commute times, and potential for serious accidents and personal injury. At maximum licensed output JDCL could add 60,000 trucks annually (at peak times, one truck every two minutes) to area roads and Highway 401. JDCL traffic consultants state the "material will be shipped to/from the east via 401", and further state "Hwy. 401 ramps to both Guelph Line and Reid Sideroad are currently operating at capacity".\*\*

\*\* JDCL Traffic Impact Study, June 2018

### Flying Rock



Flying rock is rock fragments propelled through the air beyond the normal blast zone by explosives detonated to fragment the rock.

- Highway 401 is within 100 metres of the blast zone. Rock fragments could be ejected into moving traffic on the 401 and vibration felt.
- CP Rail trains transporting fuel and chemicals are within 125 metres of the blast zone.

**LET THE PREMIER KNOW KEEPING HIS PROMISE TO STOP THE QUARRY IS AS IMPORTANT TO MILTONIANS AS HIS KEEPING HIS PROMISE TO PROTECT THE GREENBELT!**

SEE BACK PANEL