

The Impact of Glyphosate Use on Hormones



Environmental exposure to endocrine disrupting pesticides contributes to the decline of human fertility and hormone function.

More than 80% of Americans have glyphosate in their urine due to pre-harvest spray of glyphosate on grains, legumes, sugarcane and more.

Recent Research:



Glyphosate causes blood-testes barrier damage and low quality sperm.



Perinatal exposure to glyphosate is connected to uterine implantation failure.



Glyphosate exposure led to changes in the structure of the testes, decreased serum testosterone, and lower sperm counts.



There is a significant inverse correlation between urine glyphosate concentrations and serum total estradiol.

TO DO

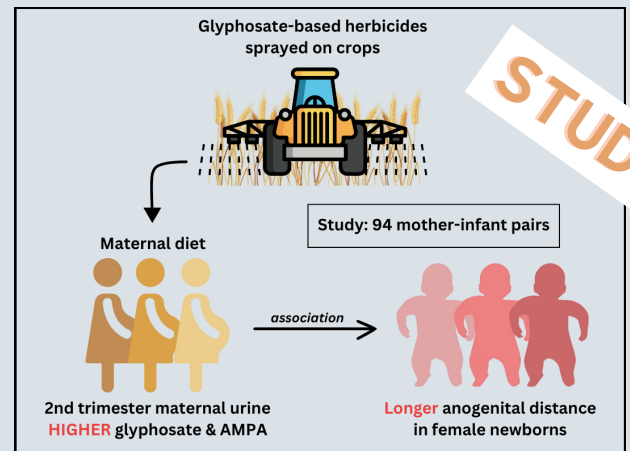
1

Immediately ban the use of glyphosate and other synthetic chemicals for pre-harvest desiccation.

2

Read *Countdown* by Dr. Shanna Swan

Testosterone deficiency has a prevalence of 20% among adolescent and young adult males.



Corina Lesseur, et al. 2021

Mayo Clinic

Nearly 1 in 7 couples is infertile, which means they haven't been able to conceive a child even though they've had frequent, unprotected sexual intercourse for a year or longer. In up to half of these couples, male infertility plays at least a partial role.



**glyphosate
facts**

Kelly Ryerson
www.glyphosatefacts.com
info@glyphosatefacts.com